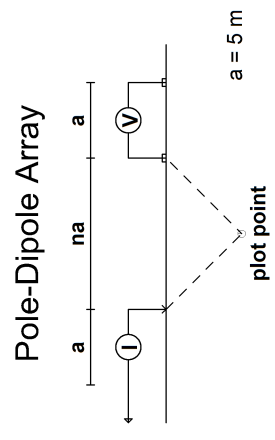


# 2014 South Plateau 3D DC/IP Survey STACKED SECTION



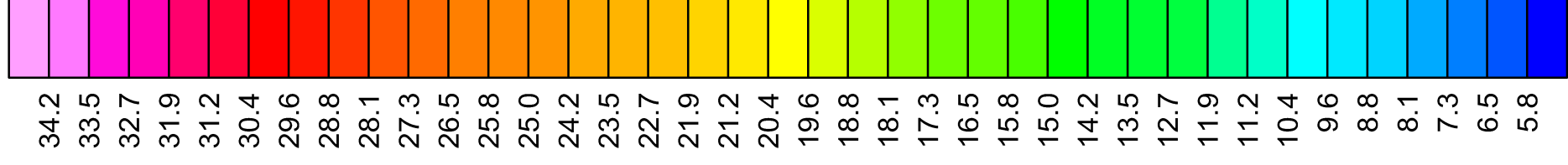
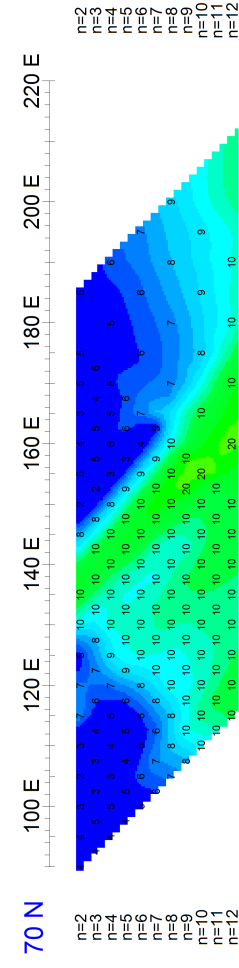
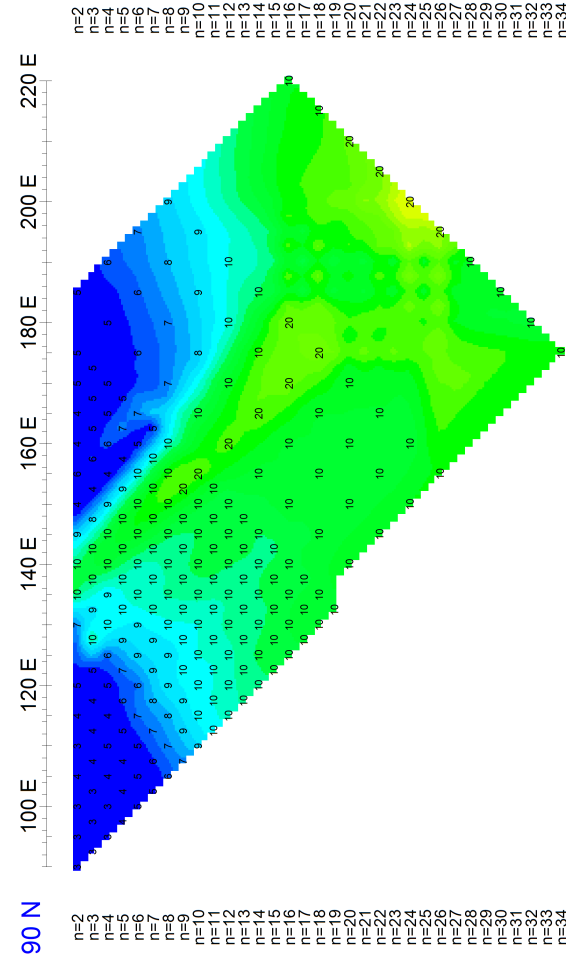
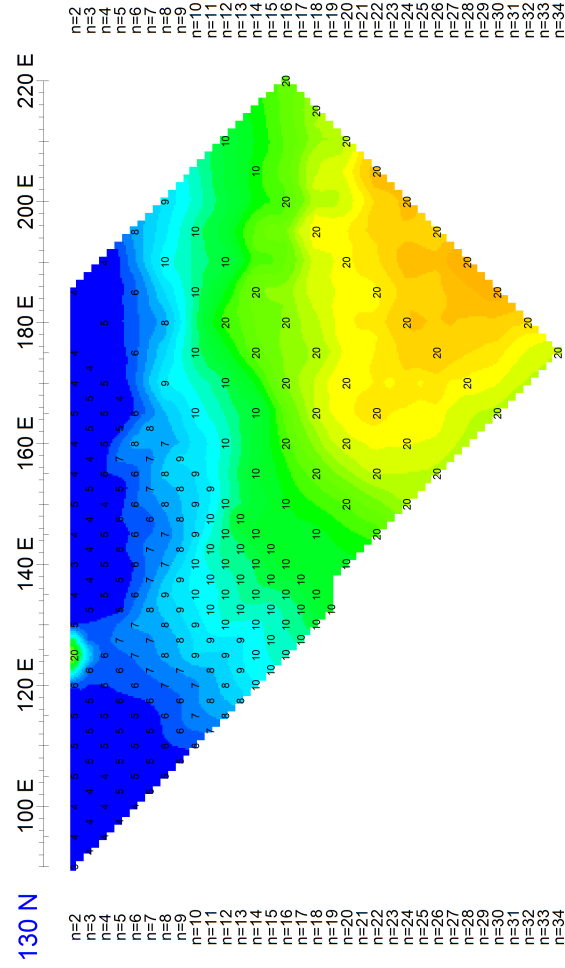
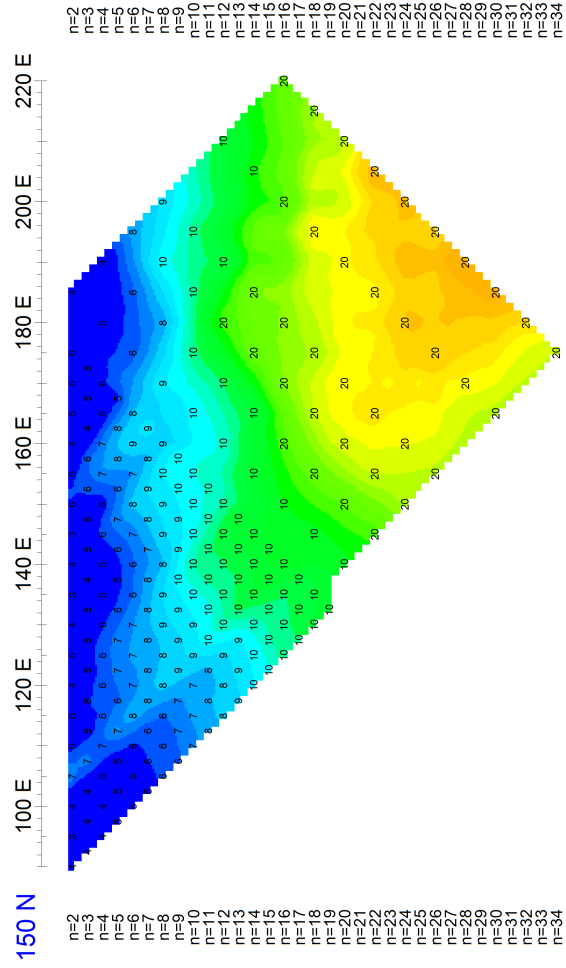
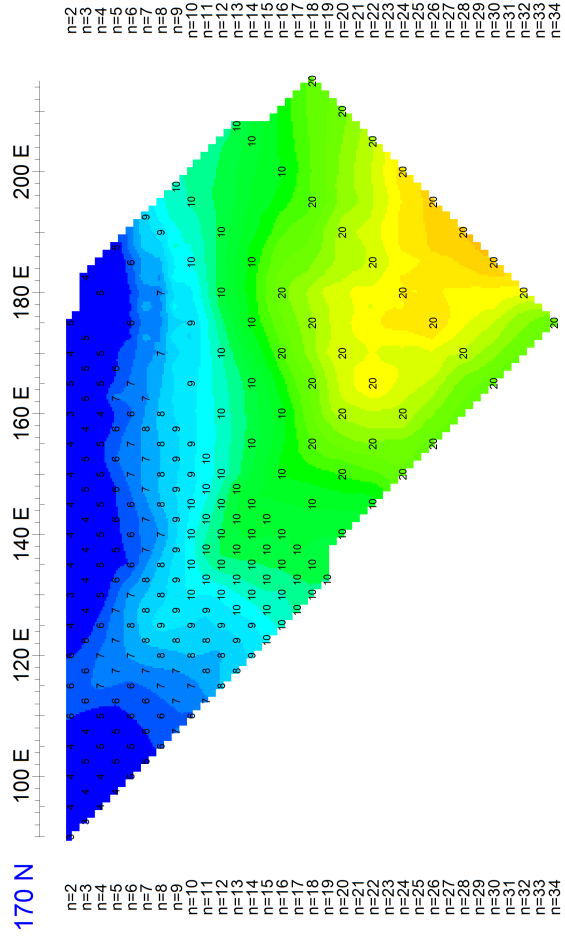
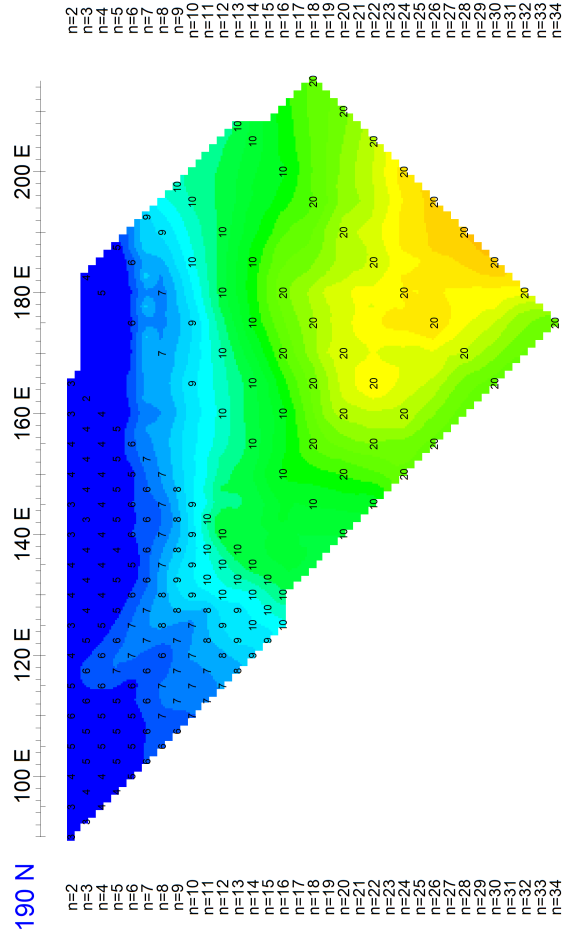
Stationary electrode at 581313E 7017095N

Receivers: Iris EirecPro

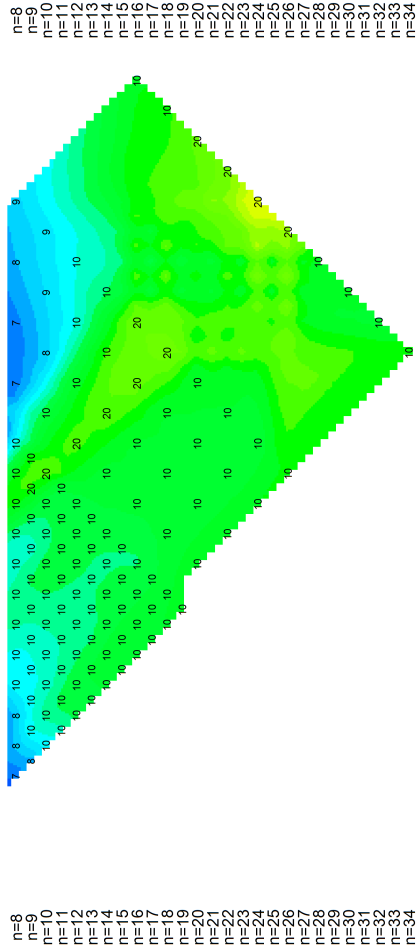
Transmitter: GDD Tx-II 3.6kW

Data File: SouthPlateau\_DetailGrid\_IP\_PredvsObs.gdb

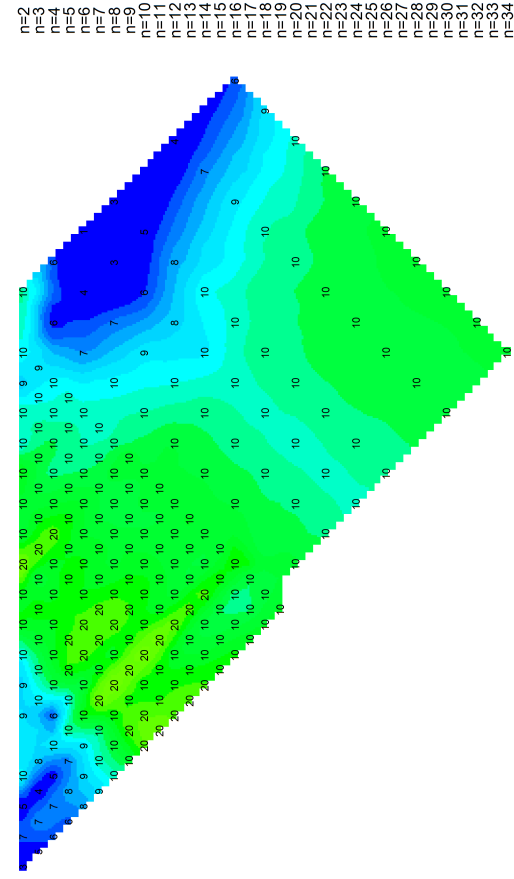
Dates Surveyed : July 30-August 4, 2014



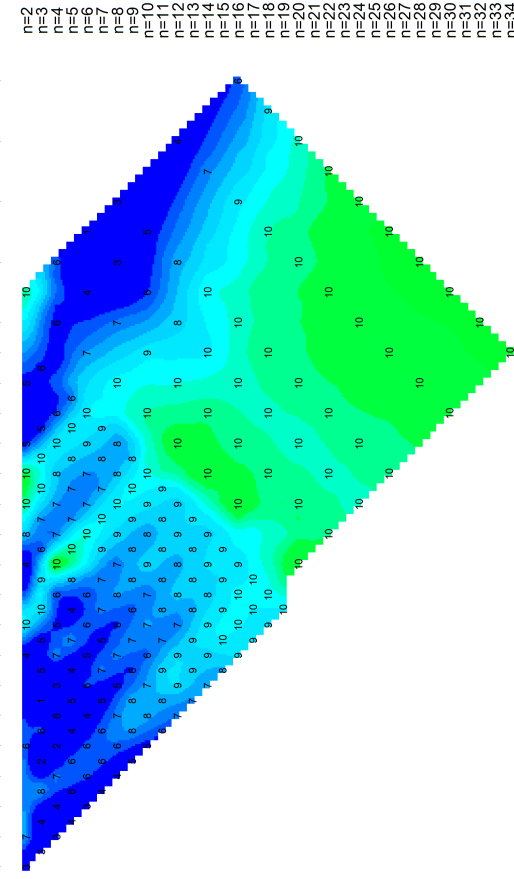
Apparent Chargeability  
mV/V



30 N 100 E 120 E 140 E 160 E 180 E 200 E 220 E



16 N 100 E 120 E 140 E 160 E 180 E 200 E 220 E



GOLDSTRIKE RESOURCES LTD.

2014 3D DC/IP SURVEY  
Stacked Section Plots - TX east of RX  
Predicted Apparent Chargeability

Date: November 12, 2014 Job#: GSR-14541-YT

AURORA GEOSCIENCES LTD.