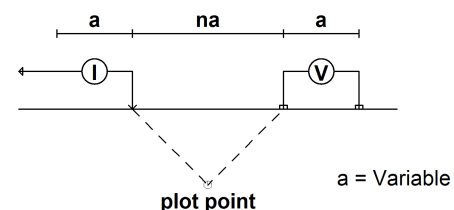


2014 South Plateau 3D DC/IP Survey STACKED SECTION

Pole-Dipole Array



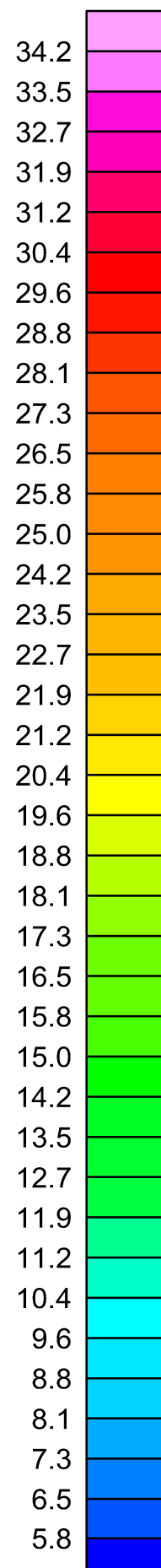
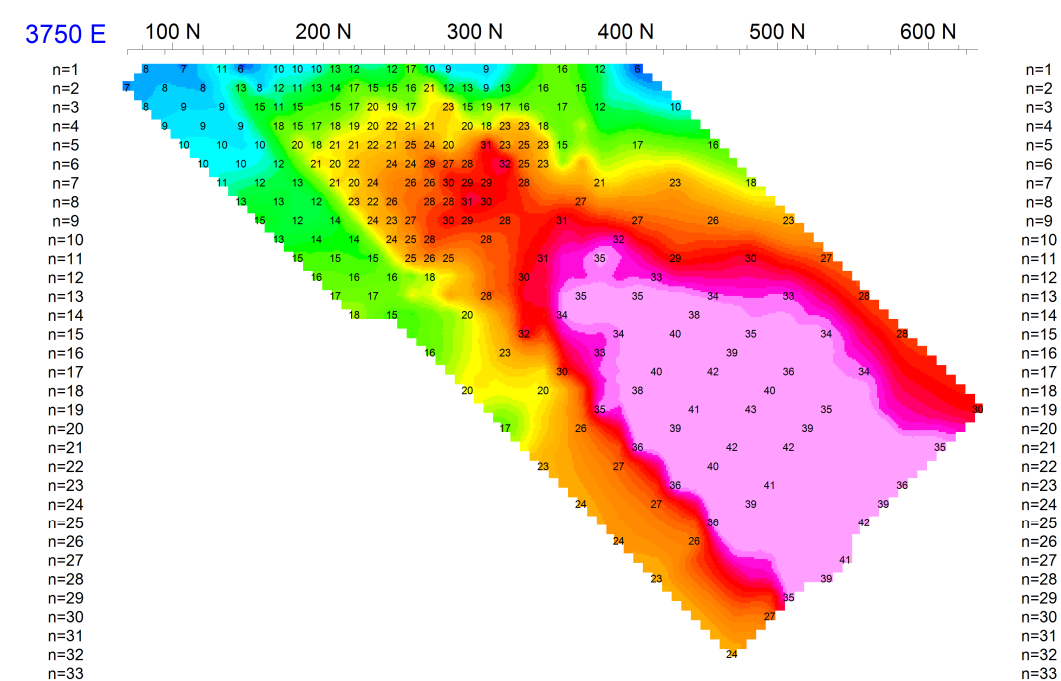
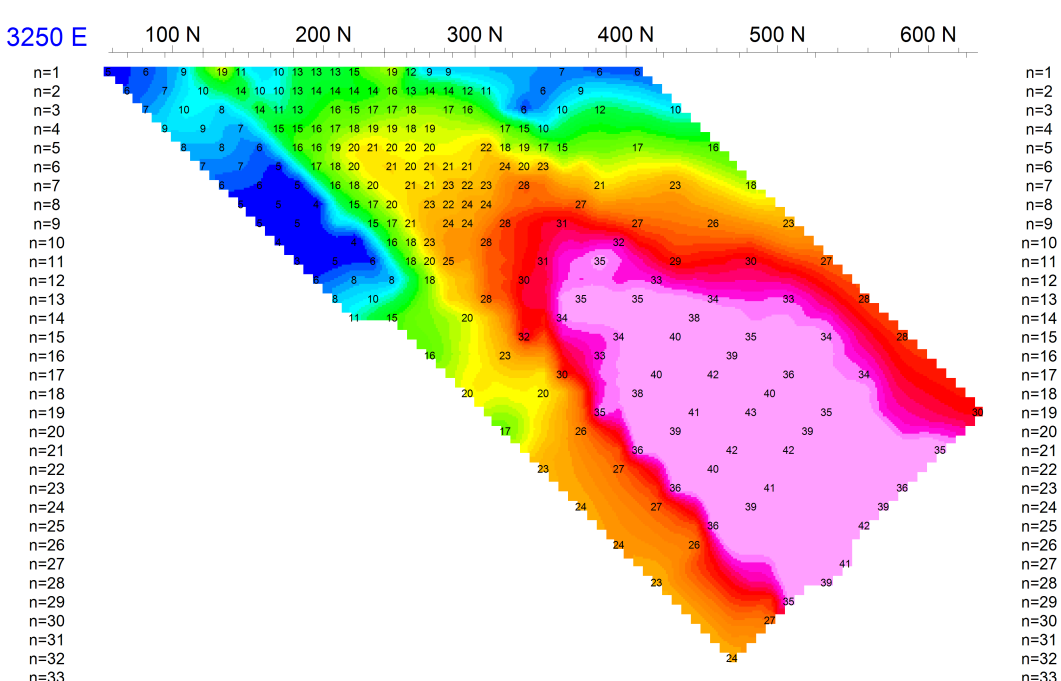
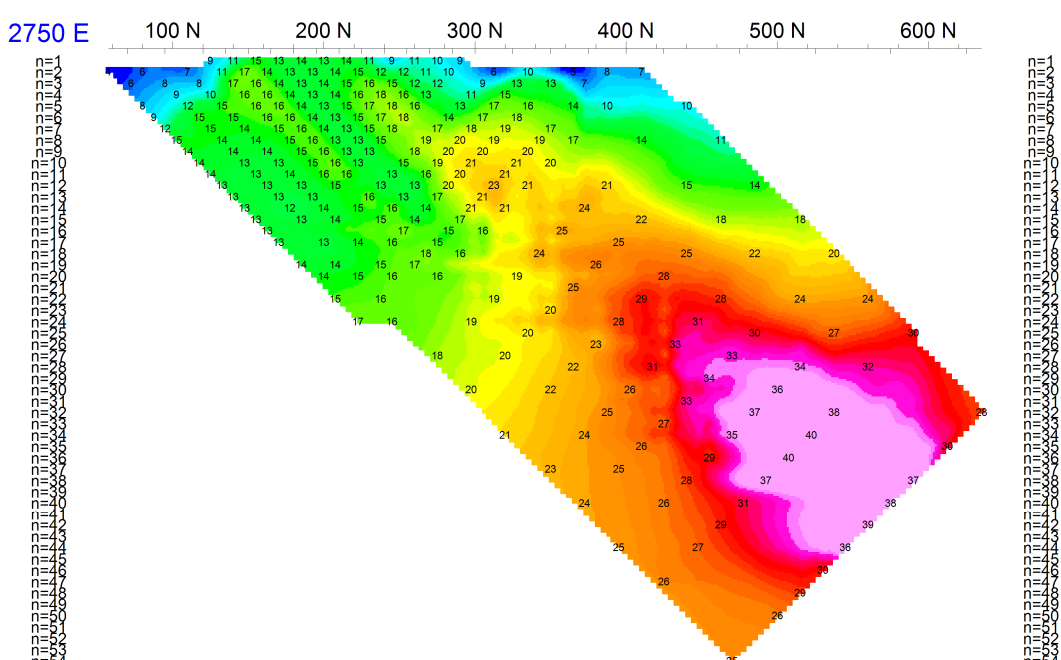
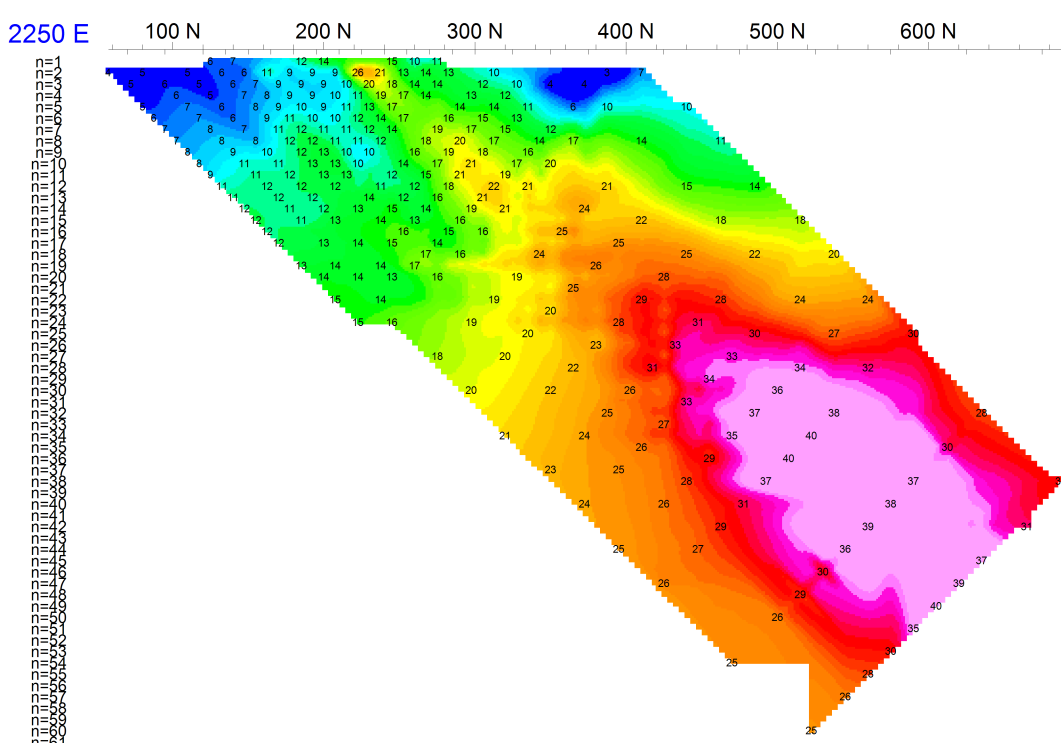
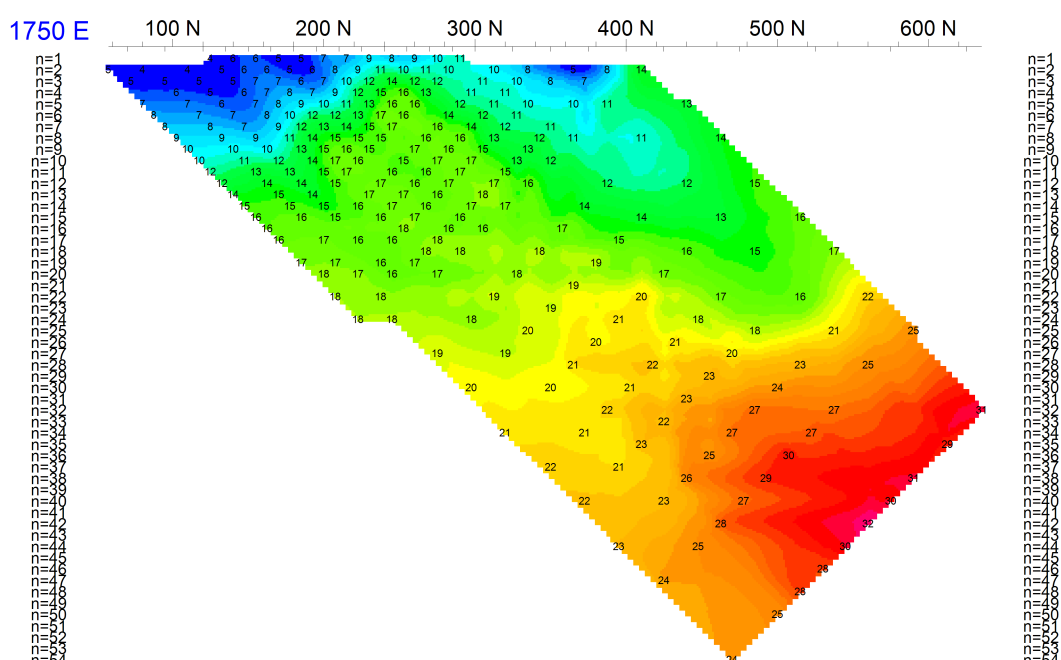
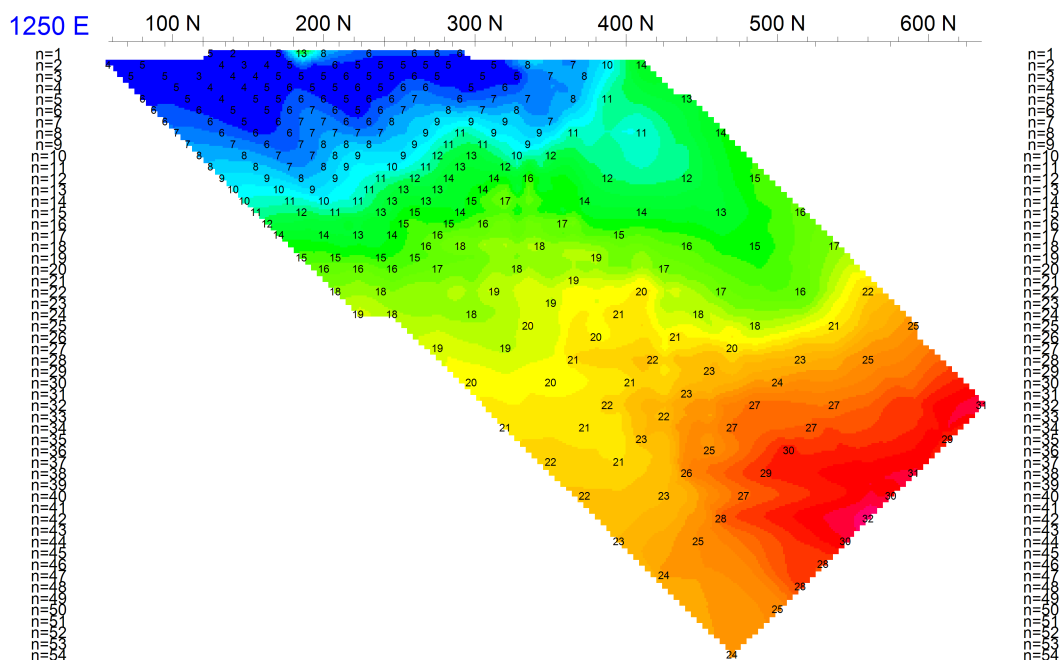
Stationary electrode at 581313E 7017095N

Receivers: Iris ElrecPro

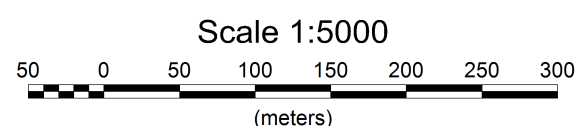
Transmitter: GDD Tx-II 3.6kW

Data File: SouthPlateau_CoarseGrid_IP_PredvsObs.gdb

Dates Surveyed : July 30-August 4, 2014



Apparent Chargeability
mV/V



GOLDSTRIKE RESOURCES LTD.

2014 3D DC/IP SURVEY
Stacked Section Plots - TX north of RX
Observed Apparent Chargeability

Date: November 12, 2014

Job#: GSR-14541-YT

AURORA GEOSCIENCES LTD.