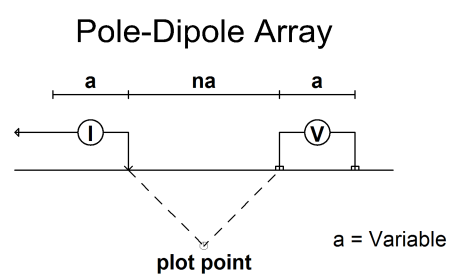
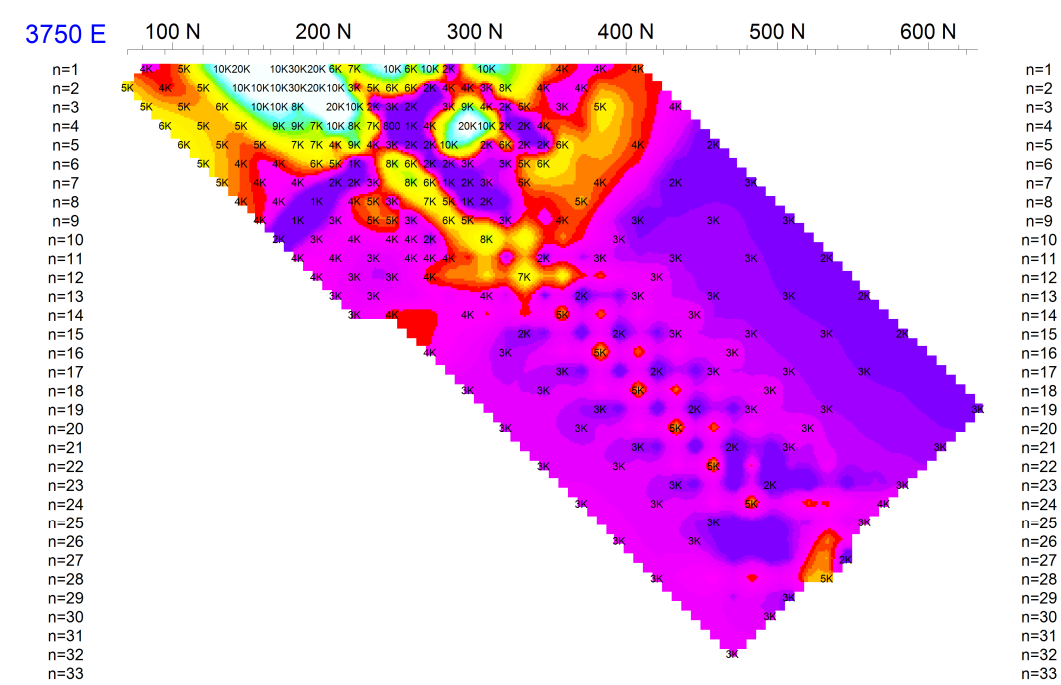
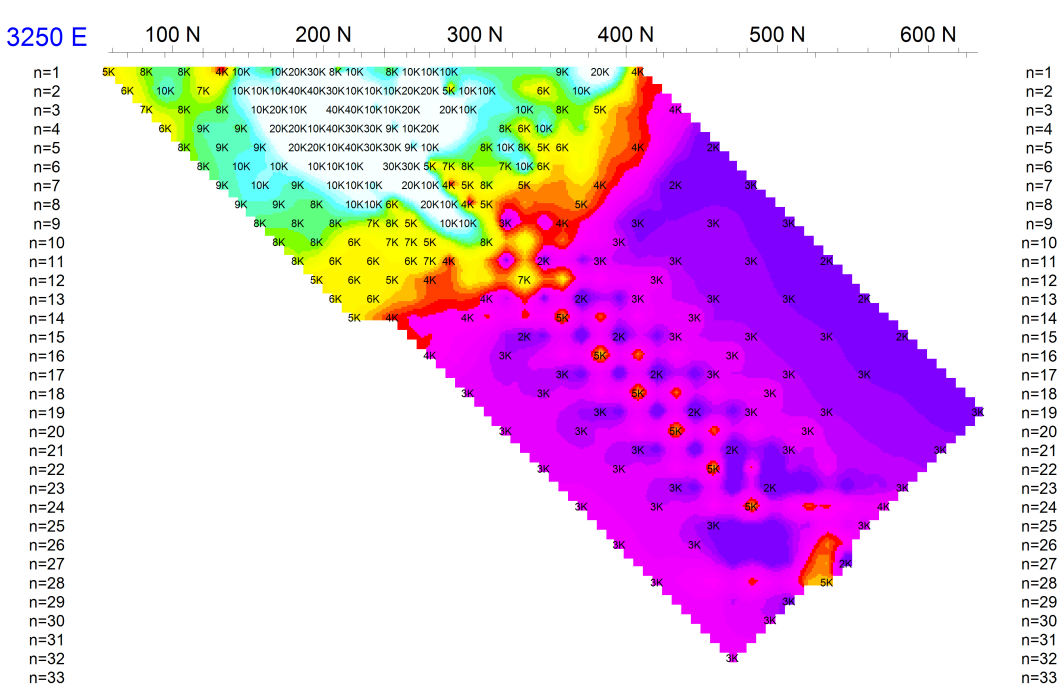
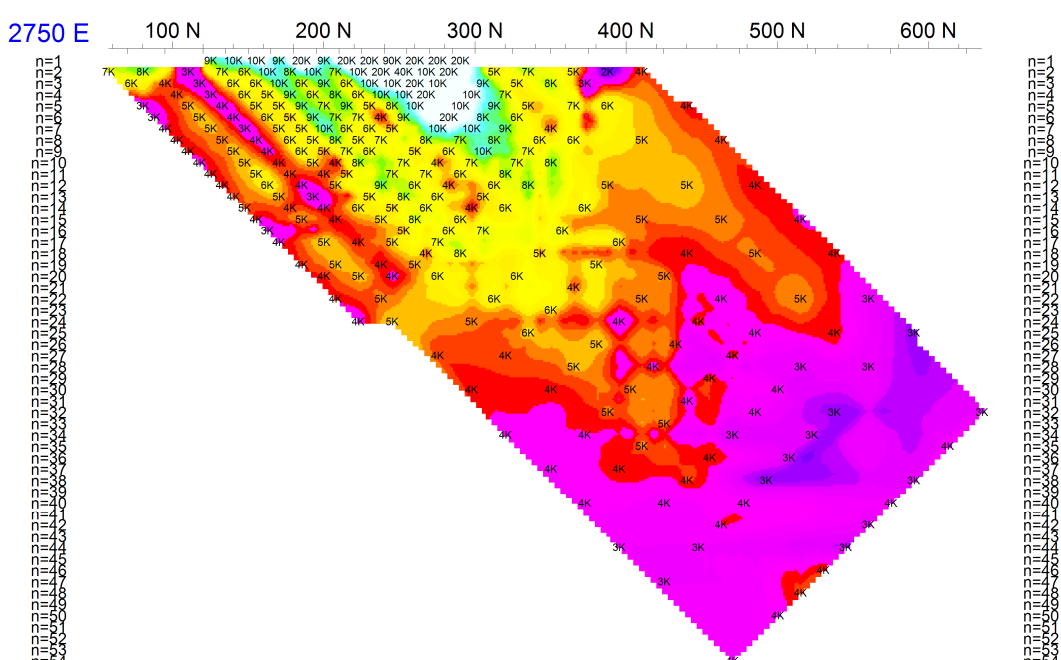
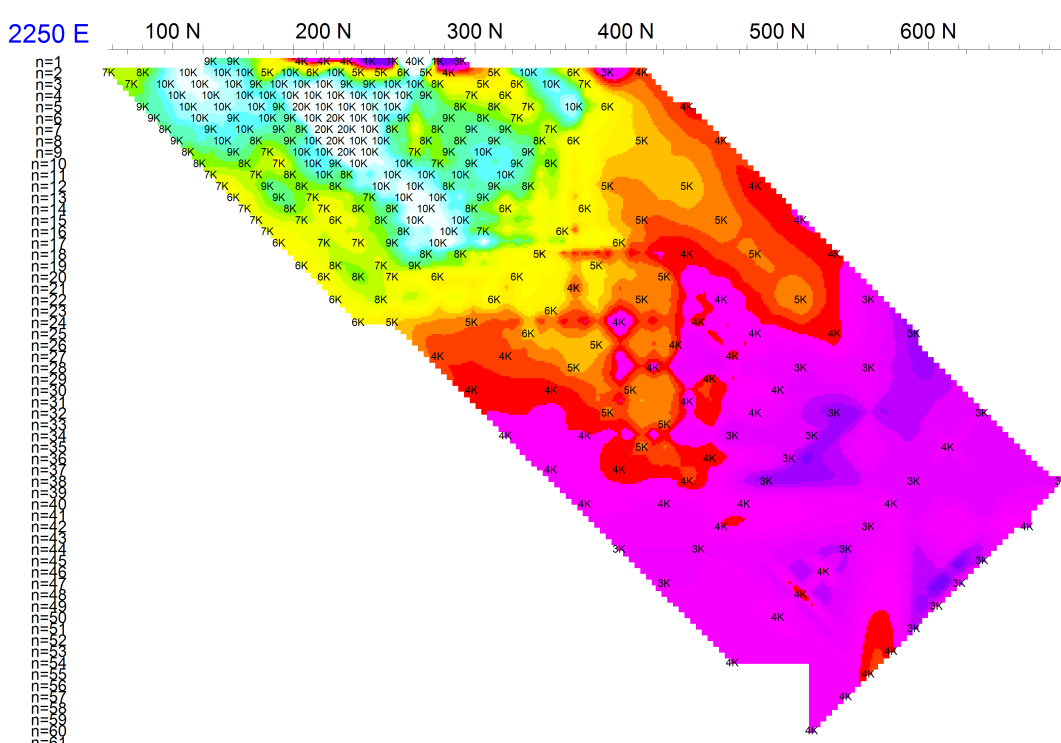
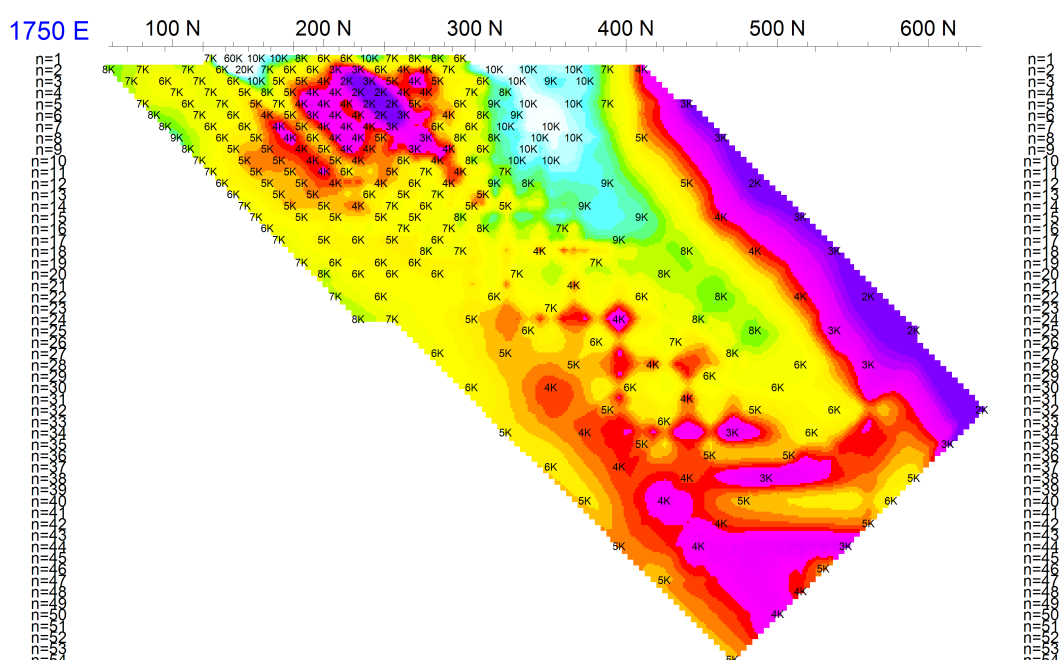
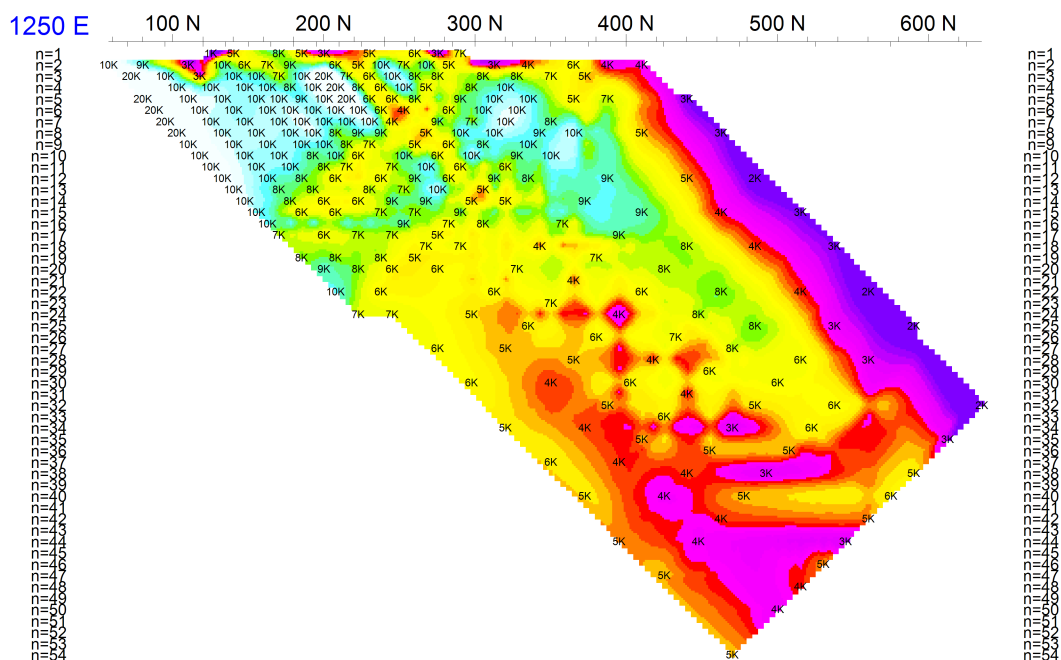


# 2014 South Plateau 3D DC/IP Survey STACKED SECTION



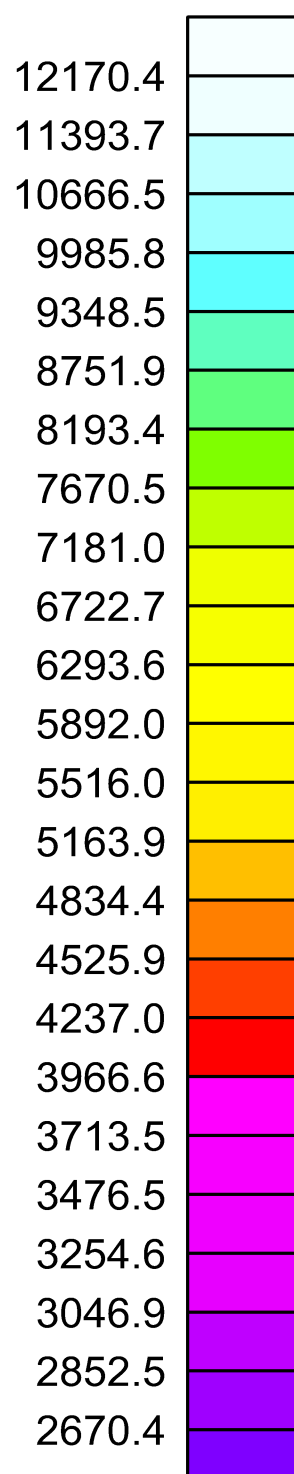
Stationary electrode at 581313E 7017095N

Receivers: Iris ElrecPro

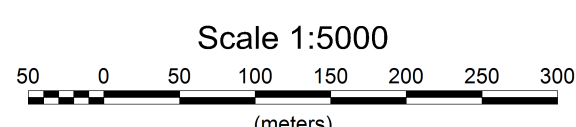
Transmitter: GDD Tx-II 3.6kW

Data File: SouthPlateau\_CoarseGrid\_DCIP\_Final.gdb

Dates Surveyed : July 30-August 4, 2014



**Apparent Resistivity**  
ohm.m



GOLDSTRIKE RESOURCES LTD.

**2014 3D DC/IP SURVEY**  
**Stacked Section Plots - TX North of RX**  
**Observed Apparent Resistivity**

Date: November 12, 2014 Job#: GSR-14541-YT

**AURORA GEOSCIENCES LTD.**