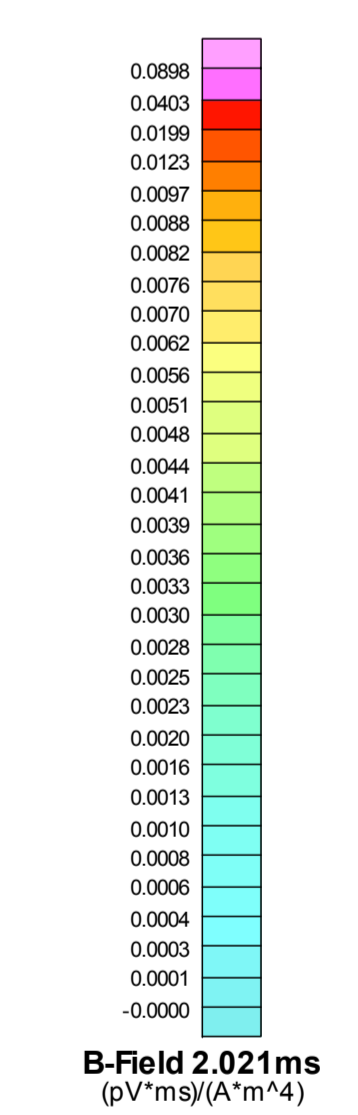
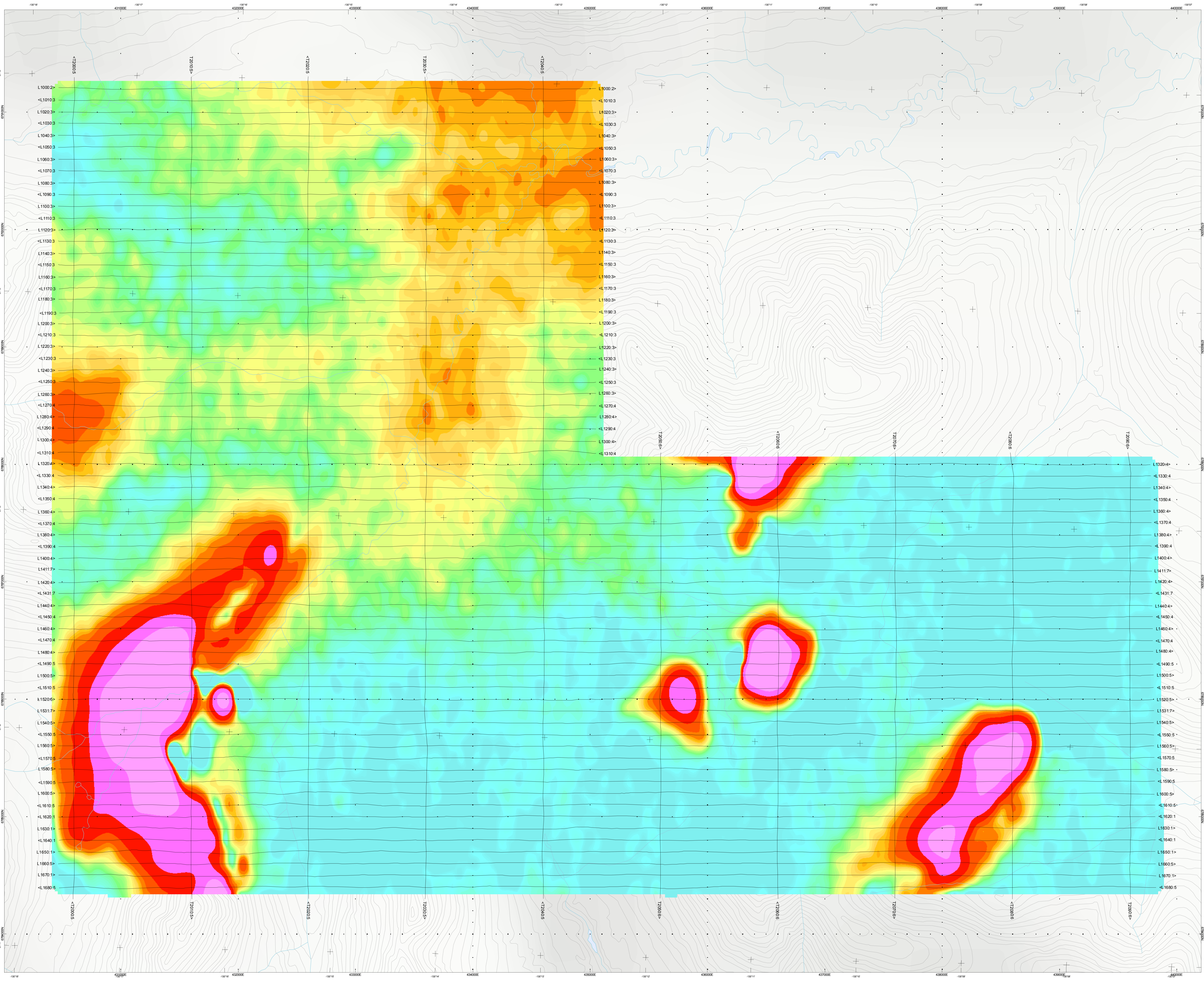




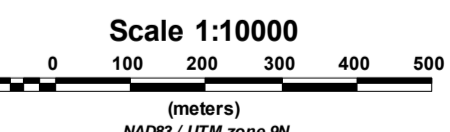
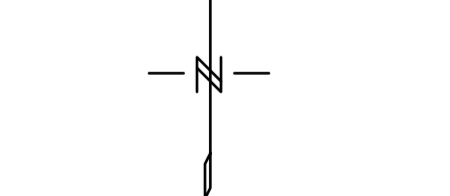
SURVEY SPECIFICATIONS:
 Survey Date: August 21st to 26th, 2014
 Survey Base: Finlayson Lake, Yukon
 Aircraft: Aerospacelab A-Star 300 (S/C-GEOL)
 Survey Line Spacing: 100 Meters
 Survey Line Direction: N07° E / N 207° E
 Tie Line Spacing: 1000 Meters
 Tie Line Direction: N 07° E / N 107° E
 Average Aircraft Terrain Clearance: 100 Meters
 EM Transmitter Loop: Towed at an average terrain clearance of 35 meters below the helicopter
 Magnetic Sensor: Towed at an average terrain clearance of 13 meters below the helicopter

INSTRUMENTS:
 Geotech Time Domain Electromagnetic System (VTEM)
 Concentric Helix Geometry
 Coil Diameter: 0.32m
 Z-Coil Diameter: 1.2m
 Transmitter Loop Diameter: 17.5 Meters
 Dipole Moment: 243,265 nA
 Transmitter Wave Form: Tripposed, Pulse Width 3.20 ms, Base Frequency 30 Hz
 Geometric High Sensitivity Caesium Magnetometer
 Map Resolution: 0.02 nT at 10 samples/sec

MAP PROJECTION:
 Datum: NAD83
 Projection: Universal Transverse Mercator
 Central Meridian: 129°W (Zone 8N)
 Central Scale Factor: 0.9996
 False Easting/Northing: 500,000.00m
 Map Scale: 6376197.00
 Inverse Flattening: 298.25722
 NTS: 10000 & 100000



TOPOGRAPHIC LEGEND:
 Streams / Rivers
 Contours
 Lakes / Ponds



The topographic database was derived from 1:50,000 NRC Historical Resources Canada MT DB data. Background shading is derived from NASA SRTM30+ data. The topographic map data is derived from the Canadian 1:50,000 Vector Digital Topographic Database. Mining Claims are derived from the Yukon Government www.yukon.ca and the Yukon Geomatics www.yukongeomatics.ca.

18526 Yukon Inc.
 Expo Block
 Finlayson Lake, Yukon

Geotech VTEM System
 VTEM B-Field Z Component
 Channel 36, Time Gate 2.021ms

Flown and processed by Geotech Ltd.
 Aurora, Ontario, Canada L4G4C4
www.geotech.ca

October 2014