

Prospecting SPY Claims

Kluane Ranges, southwest Yukon

NTS: 115G 02

November 25th, 2015

Nicolai Goepfel

Summary

On November 25th, 2015; Tom Morgan and Nicolai Goeppel flew from Haines Junction using an A-Star provided by Kluane Helicopters. The excursion was to stake SPY claims 87-126 and to prospect the adjacent areas. Three main areas were prospected; area A was considered prior by Tom Morgan to be at potential continuation of the Spy dyke, area B was to follow up on a malachite stained sample taken by Nicolai Goeppel in the spring, and lastly area C was noted during the staking an exposed contact. Three samples were taken one from each of the mentioned areas.

Area A

Area A was investigated to look for potential continuation of Spy Dyke, located down strike of known mineralization. A northeast trending ridge was traversed for approximately 1km; snow cover reached waist depth yet ridge was primarily windblown with good exposure (Photo 1). Prospecting remained within volcanic package with no favourable host rock for PGE and Ni mineralization; however, in adjacent ridges the basal contact of the overlying gently dipping volcanic units and steeper dipping gabbroic units(?) is apparent and more prospective (Photo 2). Observations showed a volcanic package consisting of mafic flows and andesitic dykes. Sample 15SPY02 was taken from oxidized material from mafic volcanic and steeply dipping andesitic dyke (Map 1). Encountered lithologies could provide potential host for vms mineralization.

Area B

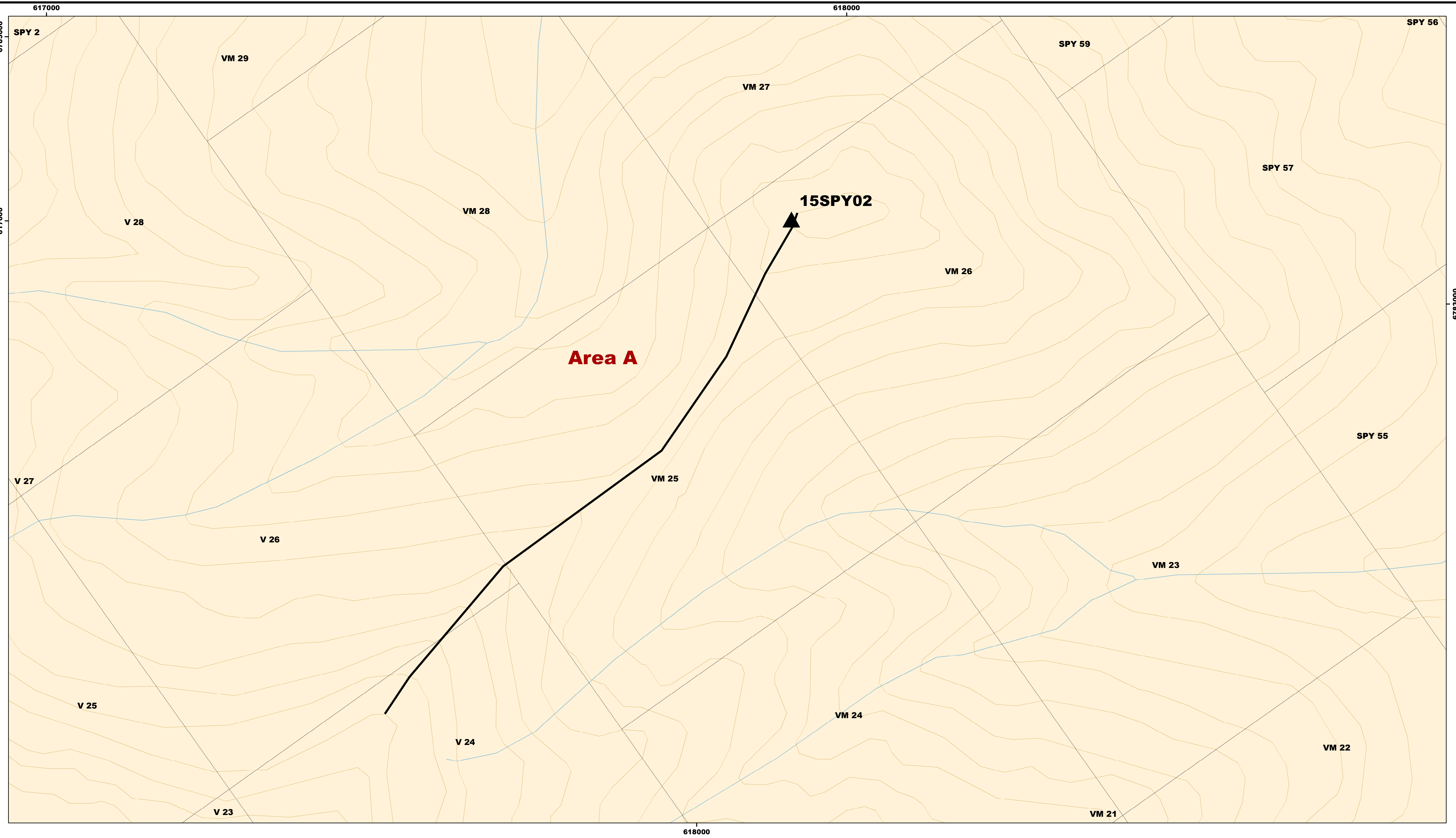
Area B was to follow up on a sample taken during staking in spring 2015 (Map 2). Prospecting was limited to the immediate area around a large >2m wide malachite stained boulder consisting of altered basalt. In the surrounding talus several other smaller boulders showed orange brown weathering with limonite, and locally semi-massive sulphide (Sample 15SPY03). Nearby bedrock exposure suggests a local source for mineralized rubble.

Area C

Area C was investigated due to obvious yellow-orange colouration in the soil and associated with an apparent contact. The contact was indeed, between shallowly intruding mafic/intermediate dykes and sediments including sandstone, shale and lenses of limestone (Photo 3). Sample 15SPY01 was taken from this location from a mafic volcanic with limonite and minor sulphide blebs.

APPENDIX

See attached

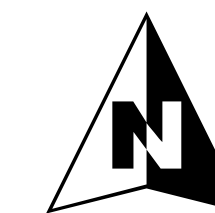


SPY Claims

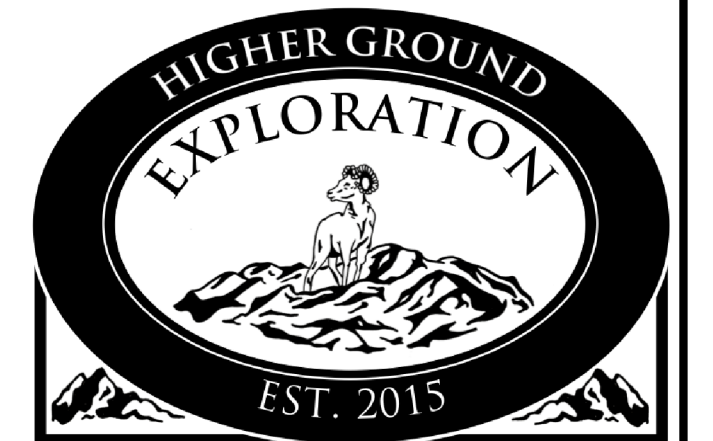
Destruction Bay Area, Whitehorse Lake Mining District

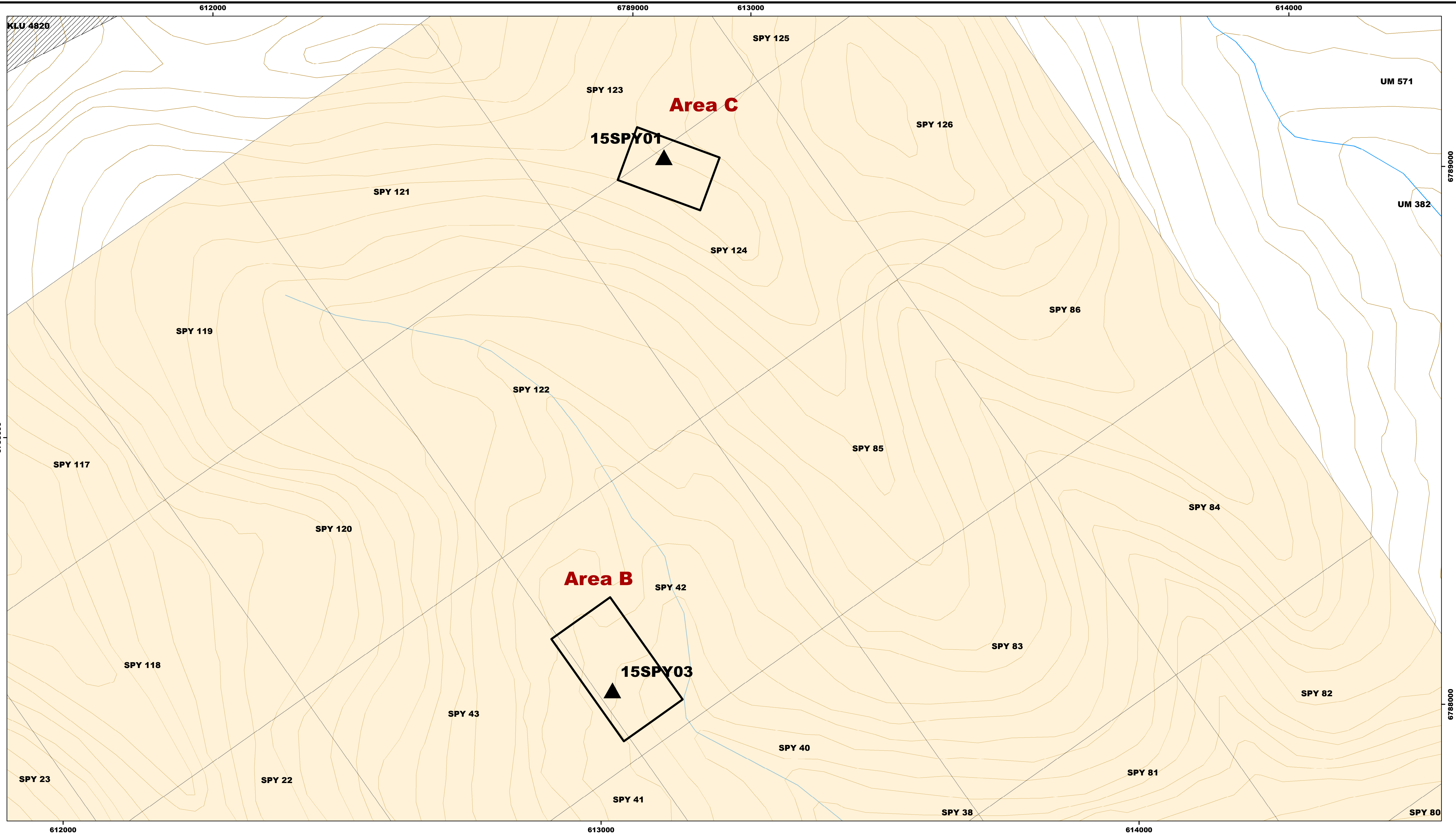
Legend

Symbol/ID	STATUS
▲ 0	Active
— Area Traversed	Pending
	First_Nation_Settlement_Lands_Unsurveyed



Sheet No.
115G 02



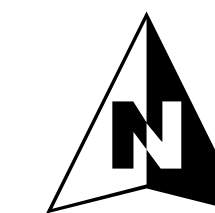
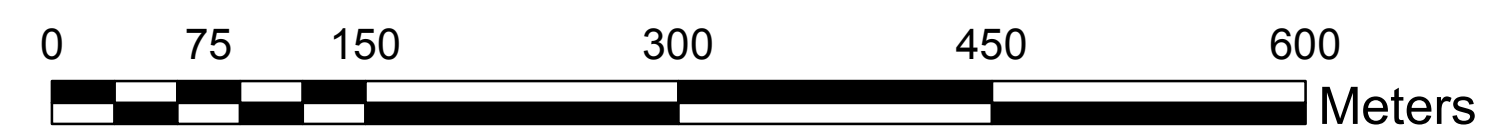


SPY Claims

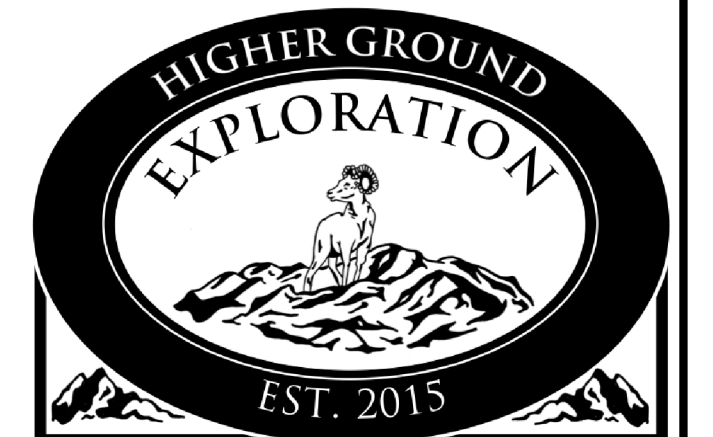
Destruction Bay Area, Whitehorse Lake Mining District

Legend

Symbol/ID	STATUS
▲ 0	Active
▭	Pending
▨	First_Nation_Settlement_Lands_Unsurveyed
—	Area Traversed



Sheet No.
115G 02









Datum: NAD83

NTS: 115G 02

Sample ID	Zone	Easting	Northing
15SPY01	7V	612887	6788749
15SPY02	7V	617978	6782954
15SPY03	7V	612976	6787739