

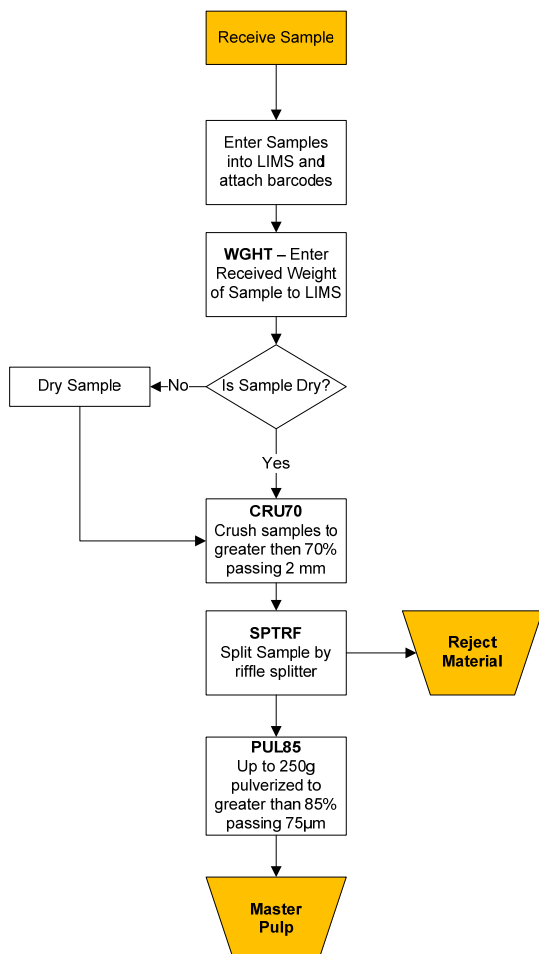
**BUREAU  
VERITAS**

MINERALS

## ▶ PRP70-250

<b>Package Description</b>	Crushing and Pulverizing
<b>Samples Digestion</b>	NA
<b>Instrumentation Method</b>	NA
<b>Legacy Code</b>	R150
<b>Applicability</b>	Rock and Drill Core

## ▶ METHOD DESCRIPTION



Received samples are entered into the Laboratory Information Management System (LIMS), weighed, dried and crushed to ensure that greater than 70% pass a 2mm sieve. A 250g split of the crushed material is then pulverized to greater than 85% passing a 75µm sieve.

At random intervals and at the start of each shift QC testing is completed on both crushed and pulverized material to ensure that the above specifications are met.

The flowchart to the left describes the standard practice. Additional splits of the pulp or reject may be taken at client request and to prepare internal Prep QC duplicates.

By default if clients have not specified otherwise Master Pulps are retained and storage charges apply. Rejects are stored for 90 days and are then disposed of at the client's cost.

