

Geology Legend

Minfile Occurrence

Yukon Faults

normal, approximate

normal, covered

normal, defined

normal, inferred

strike slip, dextral, approximate

strike slip, dextral, inferred

thrust, approximate

thrust, covered

thrust, defined

thrust, inferred

unknown, approximate

unknown, covered

unknown, defined

unknown, inferred

FAULT_TYPE

Fold, assumed, anticline, overturned

Fold, assumed, anticline, upright

Fold, assumed, syncline, overturned

Fold, defined, anticline, overturned

Fold, defined, anticline, upright

Fold, defined, syncline, overturned

Fold, defined, syncline, upright

Yukon Bedrock Geology

MID TO LATE MIOCENE

MW: WRANGELL SUITE: granodiorite, biotite diorite and pyroxene gabbro; subvolcanic intrusions

MIOCENE TO PLEISTOCENE

NW1: WRANGELL LAVAS: basaltic andesite flows, interbedded with felsic tuff, volcaniclastics

OLIGOCENE

OT: KOPE SUITE: granite; lesser granodiorite, quartz diorite and gabbro-diorite

PALEOCENE TO OLIGOCENE

OA: AMPHITHEATRE: clastic sedimentary, local coal seams

LATE EARLY CRETACEOUS

EKK: KLUANE RANGES PLUTONIC SUITE: granodiorite, quartz diorite, quartz monzonite, and hornblende diorite

CRETACEOUS AND (?) OLDER

KK1: KK: KLUANE SCHIST: undivided

KK4: KKgn: KLUANE SCHIST: paragneiss

LATE TRIASSIC AND (?) OLDER

LTrK2: MAPLE CREEK: gabbro

LTrK1: KLUANE: mafic to ultramafic intrusions

UPPER TRIASSIC

uTrN3: NIKOLAI: carbonate

uTrN2: NIKOLAI: basalt, andesite

uTrN1: NIKOLAI: basal conglomerate

uTrM: MC CARTHY

uTrKT: TATAMAGOUCHE

uTrC: CHITSTONE: limestone and argillite, local gypsum

MIDDLE TRIASSIC

mTrH: HOGE CREEK

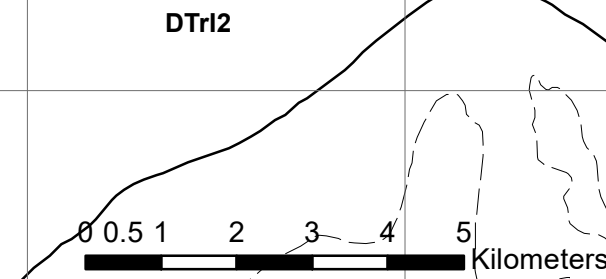
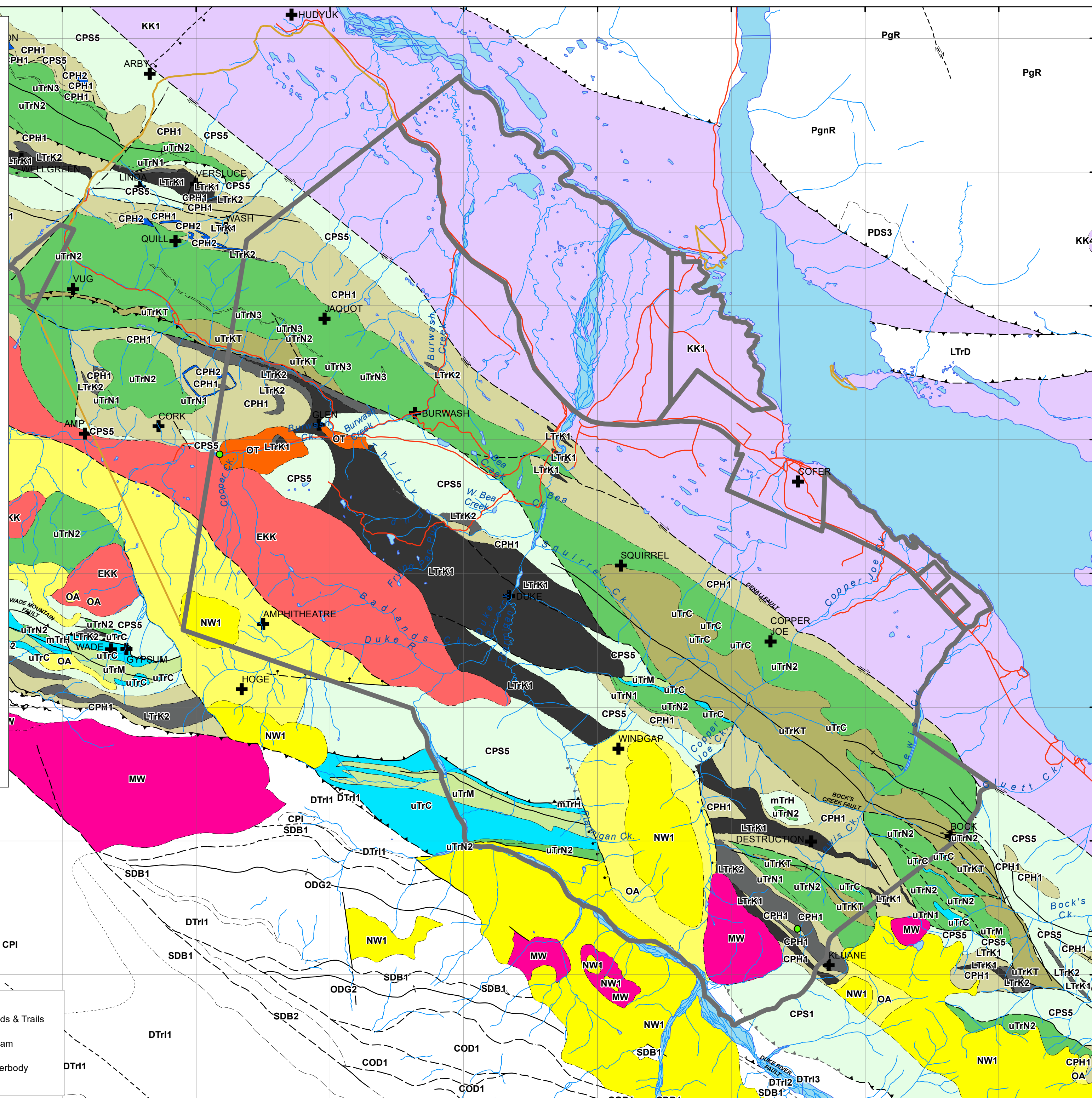
PENNSYLVANIAN TO (?) LOWER PERMIAN

CPH2: SKOLAI/HASEN CREEK: carbonate

CPH1: SKOLAI/HASEN CREEK: siltstone, mudstone, sandstone

CPS5: SKOLAI/STATION CREEK: volcanic breccia

CPS1: SKOLAI: undivided Skolai Gp., Station Creek and Hasen Creek fms.



Kluane Mineral Resources Inc.

**Geology Map
KFN Category A Settlement Lands**

Date: 2017-01-12
 1:100,000
 Coordinate System: NAD 1983 UTM Zone 7N
 Projection: Transverse Mercator
 Datum: North American 1983
 Author: D. James
 Source: Yukon Geological Survey digital mapping



565000 570000 575000 580000 585000 590000 595000 600000 605000 610000 615000