

16-036

Test Pits

Bud 1 - Bud 4

With such heavy rain fall through out the season the water table was above normal and all holes had water running in which had an effect on our samples. Numbers were calculated with gold at \$1500.00 an ounce. All test pits that were found favourable by panning a 5 gallon bulk sample was taken to town for processing.

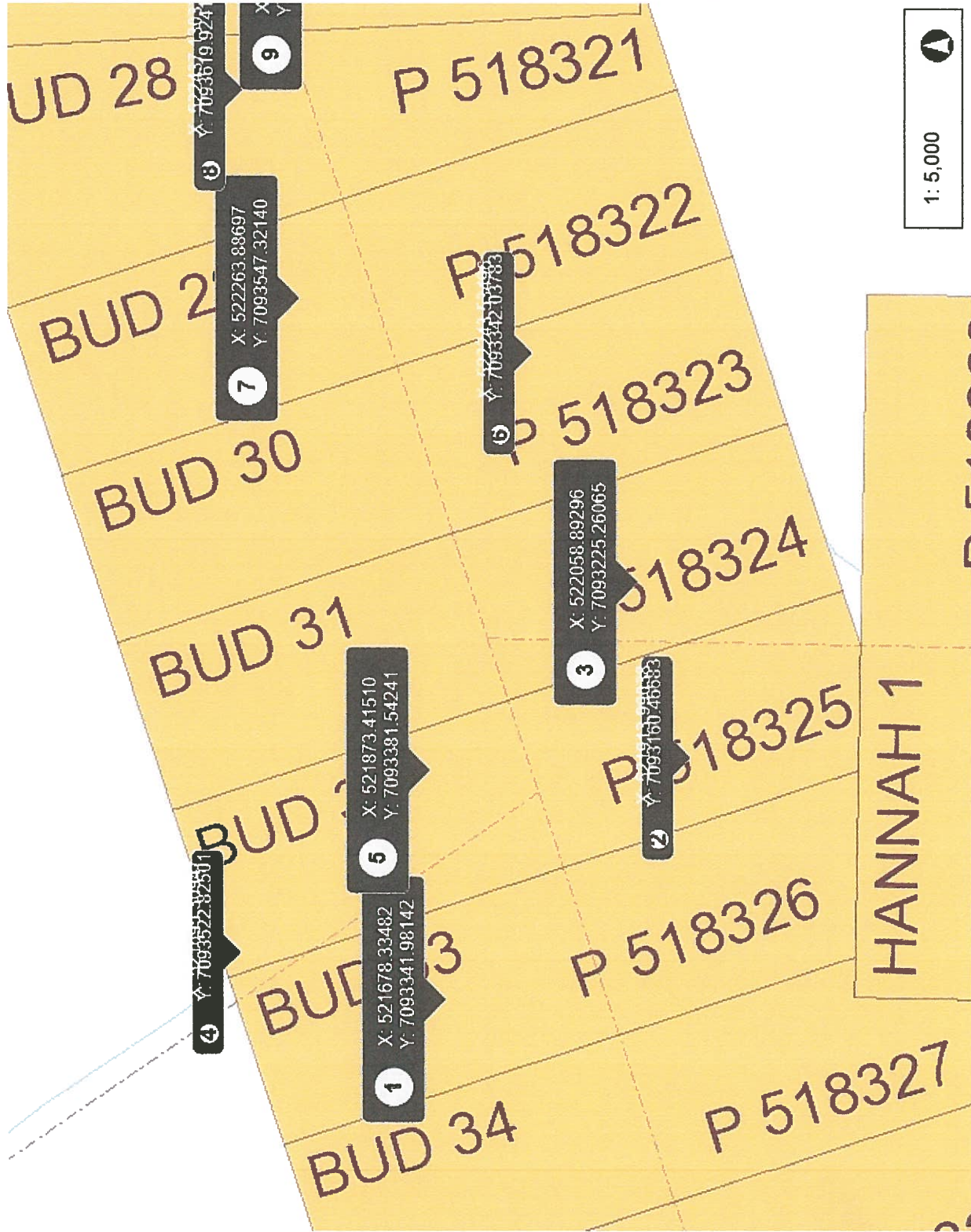
1. 6' wide by 10' long by 7' deep pit was excavated. Water present, gravels were loose to bedrock, bedrock was schist. Our pan showed 7 fine colours, a bulk sample was taken for processing. Some black sand evident, the sample came back at \$13.00 a yard.
2. GPS of old cabin, 4 round of roof collapsed, as shaft was found 20' away.
3. 6' by 15' by 10' pit was excavated. Loose gravel, some coarse boulders near schist bedrock. 15 colours in pan, a bulk sample was taken for processing and the sample came back at \$15.00 a yard.
4. 6' by 8' by 5' pit was excavated, watered out, frozen gravel, no sample.
5. 6' by 8' by 2' pit was excavated, 2' of organics were thawed followed by frozen ground. Marshy type area, stunted trees, no sample.
6. 6' by 12' by 12' pit was excavated. Water present, first 8' loose gravels, last 2' consisted of large boulders found near schist bedrock. Our pan showed 15-20 colours, a bulk sample was taken for processing and the sample came back at \$18.00 a yard.
7. 6' by 12' by 10' pit was excavated, water present, 8' of loose gravels mixed with larger boulders near bedrock, schist bedrock. Our pan showed 8 colours, a bulk sample was taken for processing and sample came back at \$15.00 a yard.
8. 6' by 12' by 8' pit was excavated, loose gravels, schist bedrock, water present, no colours in pan, no sample was taken.
9. 6' by 12' by 12' pit was excavated. Water present, first 8' loose gravels, 2' of coarse boulders near schist bedrock. Our pan showed 17 colours, a bulk sample was taken for processing and the sample came back at \$16.00 a yard.
10. 6' by 10' by 10' pit was excavated. Water present, loose gravels mixed with large boulders and schist bedrock. 6 colours in a pan, a bulk sample was taken for processing and the sample came back at \$15.00 a yard.

Bud 33 to Bud 24

1. Test pit was on the upper access road which seems to be a small bench formed by a left limit pup. 6' by 10' by 10' pit was excavated, trace of gold found and no sample was taken.
2. 6' by 8' by 8' pit was excavated in an old creek channel. Water present, mixed gravels and boulders to schist bedrock. 15 colours in a pan, a bulk sample was taken for processing and the sample came back at \$14.00 a yard.
3. 6' by 8' by 8' pit was excavated in an old creek channel, loose gravels, schist bedrock, no gold in pan, no sample taken.
4. Evidence of old workings, marshy ground, could not find thaw for a pit.
5. 6' by 10' by 10' pit was excavated, 8' feet of loose gravels with large boulders near schist bedrock. 8 colours in a pan, a bulk sample was taken for processing and the sample came back at \$13.00 a yard.
6. 6' by 10' by 10' pit was excavated, loose gravels, schist bedrock, panning results show no gold, no sample taken.
7. 6' by 12' by 10' pit was excavated. Water present, 10' of gravels, large boulders near bedrock, schist bedrock. 6 colours in a pan, a bulk sample was taken for processing and the sample came back at \$12.00 a yard.
8. 6' by 10' by 10' pit was excavated. Water present, 8' feet loose gravels, schist bedrock. 10 colours in a pan, a bulk sample was taken for processing and the sample came back at \$13.00 a yard.
9. 6' by 10' by 10' pit was excavated. Water present, 1' organics, 9' of loose gravels, schist bedrock. 6 colours in a pan, a bulk sample was taken for processing and the sample came back at \$10.00 a yard.
10. 6' by 12' by 10' pit was excavated. Water present, 8 feet of gravels mixed with coarse boulders to schist bedrock. 20 plus colours in a pan, a bulk sample was taken for processing and the sample came back at \$18.00 a yard.
11. 6' by 10' by 10' pit was excavated, water present, 8' gravels, some coarse boulders to schist bedrock. 10 colours in a pan, a bulk sample was taken for processing and the sample came back at \$15.00 a yard.
12. Tried a 150 foot cross valley trench utilizing an old creek channel, too much water seepage and not enough grade to construct a bedrock floor trench. 6' by 10' by 12' pit was excavated. Water present, 10' of mixed gravel and coarse boulders to schist bedrock. 15 plus colours in a pan, a bulk sample was taken for processing and the sample came back at \$13.00 a yard.

2017 Field Season

A water licence has been approved for Boucher Creek. The 2016 testing season warrants continuing a bulk sample test at the confluence of Butler Gulch and Boucher Creek. Testing shows higher yields on the left limit of the creek. More testing on Butler Gulch will be done. A 100' wide by 200' long cut will be processed on Bud 33 claim with a 60 yard/hour wash plant. We hope to finish the remaining 4 km of road on lower Boucher. Once the road ties in to Bud 1 claim we will then process a bulk sample test.



Legend

- Current Class 1 Notifications
- Areas defined by OIC
- First Nation Surveyed Lands -
- First Nation Unsurveyed Lands
- Placer Claims (50K)
 - Active and Pending
 - Expired
- Prospecting Leases
 - Active and Pending
 - Expired
- Adjoin Placer
- Placer Mining Land Use Permi
 - Class 3
 - Class 4
- Placer Baselines (50K)
- Placer Baselines (surveyed)
- Coal Exploration License
 - Active and Pending
 - Expired
- Coal Mining Lease
 - Active and Pending
 - Expired
- Surveyed Mineral Claims
- Areas withdrawn from staking
- Settlement Lands (Surveyed)
 - A: Surface and Subsurface Rights
 - B: Surface Rights

1: 5,000

0.3 0 0.13 0.3 Kilometers

This map is a user generated static output from an Internet mapping site and is for reference only. Data layers that appear on this map may or may not be accurate, current, or otherwise reliable. THIS MAP IS NOT TO BE USED FOR NAVIGATION.

Date Printed: 19-Mar-2017

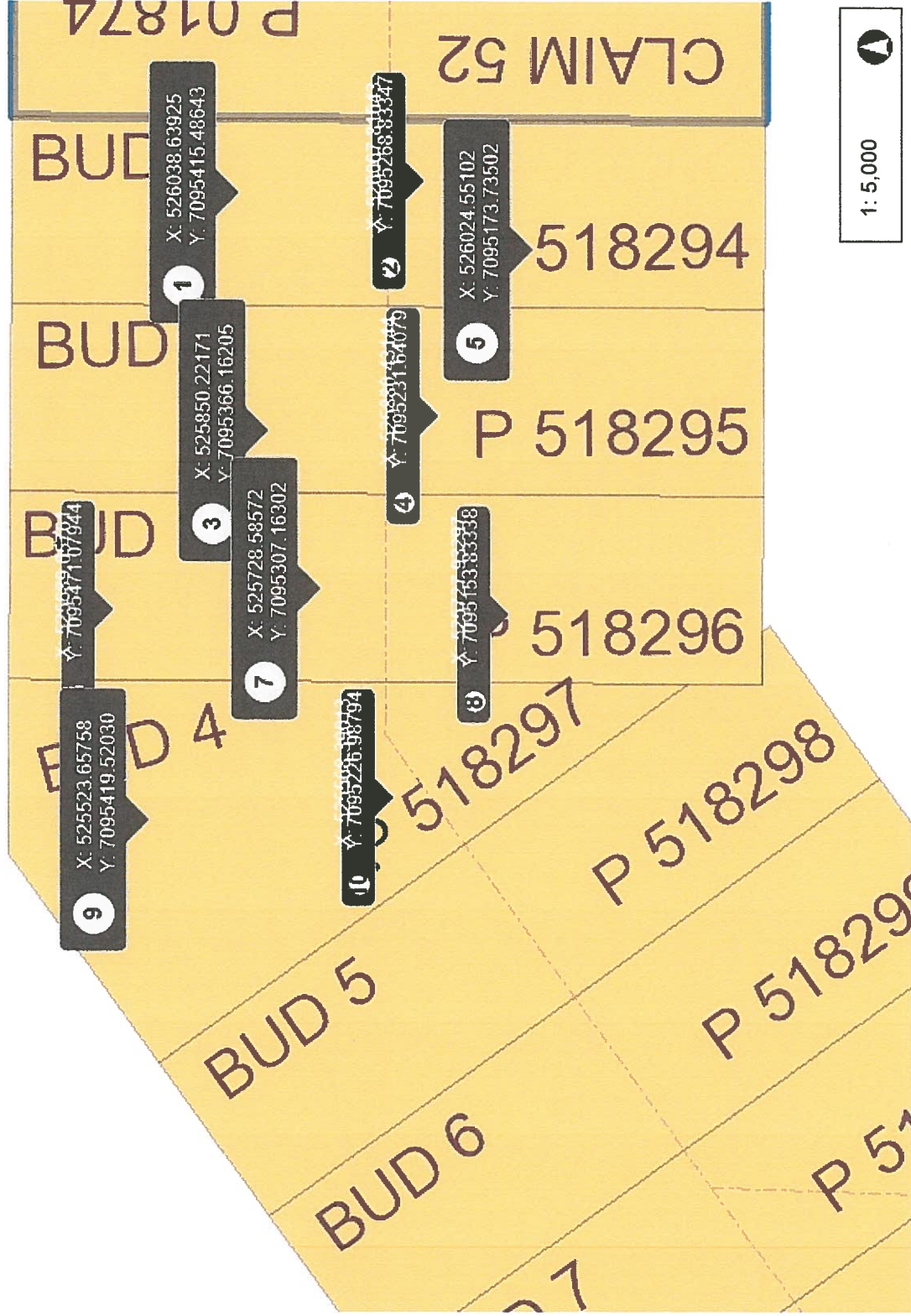
Notes



Legend

- Current Class 1 Notifications
- Areas defined by OIC
- First Nation Surveyed Lands -
- First Nation Unsurveyed Lands
- Placer Claims (50K)
 - Active and Pending
 - Expired
- Prospecting Leases
 - Active and Pending
 - Expired
- Adjoin Placer
- Placer Mining Land Use Permi
- Class 3
- Class 4
- Placer Baselines (50K)
- Placer Baselines (surveyed)
- Surveyed Mineral Claims
- Areas withdrawn from staking
- Settlement Lands (Surveyed)
 - A: Surface and Subsurface Rights
 - B: Surface Rights
 - FS: Fee Simple
 - 4.1.1 Retained Reserve
- Settlement Lands (Unsurveyec)
 - A: Surface and Subsurface Rights
 - B: Surface Rights
 - FS: Fee Simple

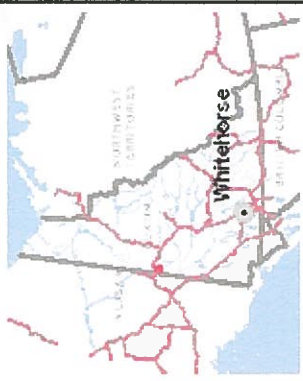
Notes



1: 5,000

This map is a user generated static output from an internet mapping site and is for reference only. Data layers that appear on this map may not be accurate, current, or otherwise reliable. THIS MAP IS NOT TO BE USED FOR NAVIGATION.
Date Printed: 19-Mar-2017

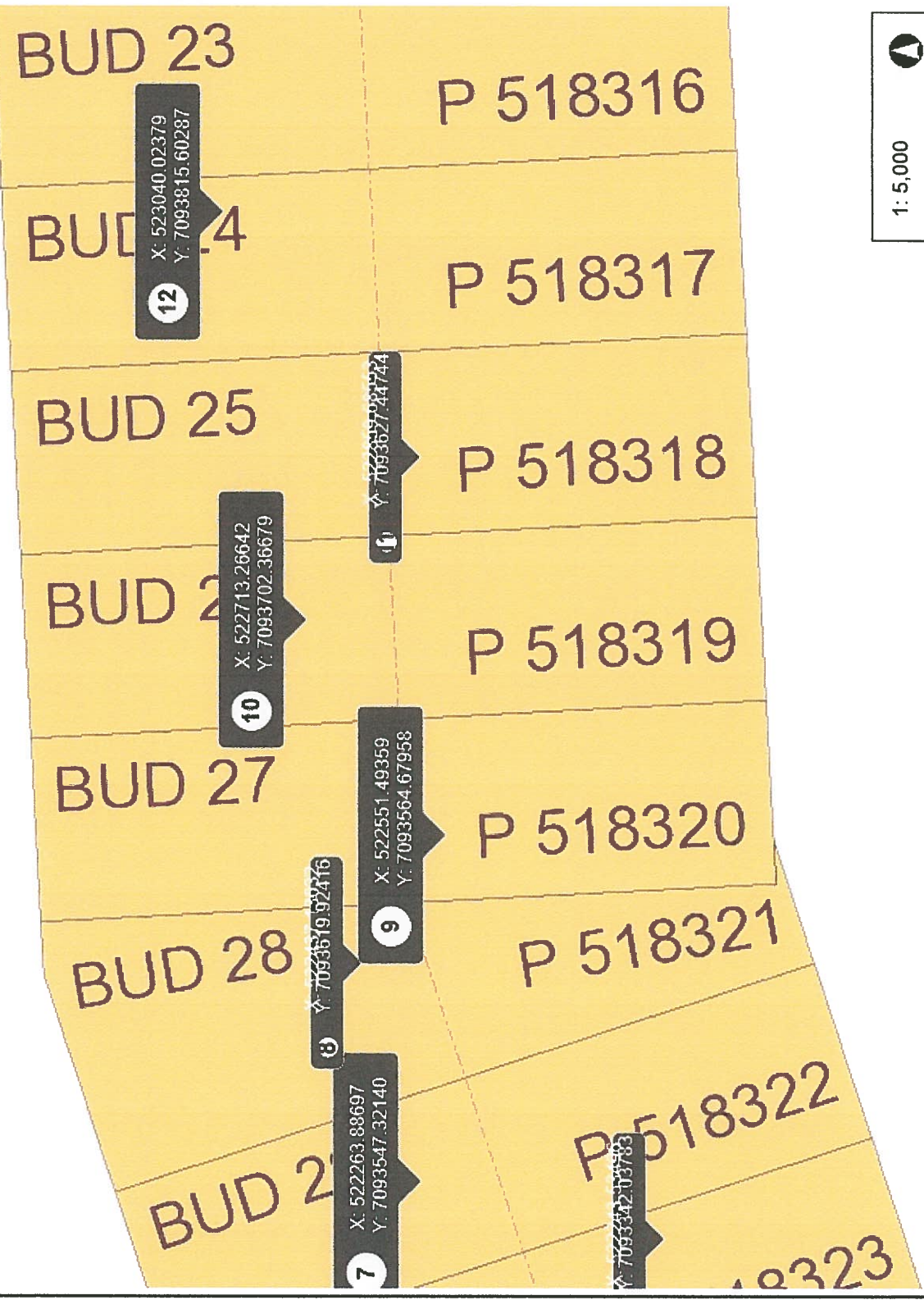




Legend

- Current Class 1 Notifications
- Areas defined by OIC
- First Nation Surveyed Lands -
- First Nation Unsurveyed Lands
- Placer Claims (50K)
 - Active and Pending
 - Expired
- Prospecting Leases
 - Active and Pending
 - Expired
- Adjoin Placer
- Placer Mining Land Use Permi
 - Class 3
 - Class 4
- Placer Baselines (50K)
- Placer Baselines (surveyed)
- Coal Exploration License
 - Active and Pending
 - Expired
- Coal Mining Lease
 - Active and Pending
 - Expired
- Surveyed Mineral Claims
- Areas withdrawn from staking
- Settlement Lands (Surveyed)
 - A: Surface and Subsurface Rights
 - B: Surface Rights

Notes



1: 5,000

0.3 Kilometers

0.13

0

0.3

This map is a user generated static output from an internet mapping site and is for reference only. Data layers that appear on this map may or may not be accurate, current, or otherwise reliable. THIS MAP IS NOT TO BE USED FOR NAVIGATION.
Date Printed: 19-Mar-2017

May 28-31

We mobed in a leased D8K to the start of the road along with a 14G grader for the next two days of work. Scott and Bentley worked 14 hour days building and grading the road. Due to spring freshet a day of grading was spent on the California and Enchantment road. The road building construction started on the ridge top from the Enchantment Creek access road. The ground material was a mix of fractured bedrocks and organics so they averaged approximately 1 km of road building a day. Bentley's D7 was demobed to Sunnydale for repairs.

June 1-10

General maintenance and repairs were done on the Cat D7, Hitachi Excavator, and John Deere Excavator.

June 11

Scott and Bentley spent the day continuing on the road with the D8K and 14G grader and another kilometre of road was achieved.

June 21-22

Road work continued, thawed overburden followed by frost had been encountered, 500 metres of road was stripped of thawed over burden and the frost was exposed to thaw.

Road work continued, wet over burden and frost had been encountered, 500 metres of over burden was removed and the frost was ripped to be exposed and thaw.

June 25

The transmission in Bentley's truck broke on enchantment creek road access and resulted in a day loss and helicopter was used to pick Bentley up.

June 26

Unimog and trailer was mobed to California Creek turn off to deliver fuel and retrieve Bentley's truck. Bentley spend four hours on the D8K stripping and ripping frozen over burden.

July 1

D7 was mobed to California Creek bench.

July 2

Mob Hitachi U9 from Sunnydale to Boucher to start ditching the road due to heavy rainfall and further help with road construction. Four hours of grading was done in order to get the truck and excavator to Boucher.

July 4

Scott spent 10 hours on the UH-09 ditching the road.

Due to excessive rain that day the 60 Mile River crossing became impassable by vehicle. Scott's truck and Bentley's unimog had to be left on the Boucher side of the 60 Mile and they were picked up by helicopter that night.

July 10

The rain subsided enough to mob the JD270 to the California bench. The JD270 was then used to transport fuel and supplies across the 60 Mile River for the following month.

July 16

Bentley began stripping and shaping more road with the D8K.

July 22

D8K continued building road and the 14G was used to grade the Enchantment roads. Heavy rains caused the roads to be almost impassable.

July 23

Bentley used UH-09 to ditch and shape road. Descending in to Boucher Creek heavy frost, thawed mud, and springs were encountered. He had to rip frost, bail thawed mud, and ditch excessive water from the road. Road building material varied from thawed large slide rock to frozen fractured decomposed bedrock with seeping water from the cut banks.

July 24

UH-09 continued shaping and ditching the road. The JD270 was used for crossing the 60 Mile River with supplies.

July 29

UH-09 continued shaping and ditching the road but due to the excessive mud the track was dislodged off, work came to a halt and we decided to wait for better weather to continue road construction.

August 02

Repairs were made to the UH-09.

August 05

The D7E was walked to the Boucher road and due to soft conditions it was more effective than the D8K. UH-09 continued removing thaw on the road.

August 06

The last two kilometres has been roughed in to Boucher Creek but due to high rains and frozen ground the decision to abandon the road was made to allow the road to drain and dry and also wait for 60 Mile River to lower and make passable by vehicle.

August 07

D8K was demobed from Boucher Creek.

August 8

Van Every Trucking mobed PC200 Excavator to upper 60 Mile River by Miller Creek.

August 11

PC200 was then walked 17 km along the upper Boucher Creek access trail via the Matson Creek road.

August 13-14

Bentley drove in with two stakers to start breaking the lease in to claims. Bentley and Scott excavated and sampled 12 test pits from the mouth of Butler Gulch for a mile down stream. A majority of the pits were concentrated on the left limit where thawed ground could be found. All pits were sampled by panning. The pits that were testing favourable were left open for future testing. Frozen and no gold pits were reclaimed. Maps and values to follow.

August 15

Stakers continued to break leases in to claims.

August 16

Bentley tried crossing the 60 Mile River to pick up the stakers but had to turn back due to high waters.

August 17

PC200 was walked out of Boucher Creek to 60 Mile Road and demobed from there to town by Van Every Trucking. Stakers were also picked up and brought back to town.

September 06

JD 270 was walked from 60 Mile California bench to lower Boucher road. D7E continued building road on lower Boucher.

Dryer conditions and lower river crossing access to lower Boucher was passable in which road building could continue.

September 07

JD270 finished ditching lower road and D7E finished grading lower road. We were then able to access Boucher by vehicle.

September 08-09

JD270 and D7E had to rip and bail 200 feet long and 15 feet wide by 4 feet deep over burden in order to cross Grande Creek drainage to access right limit Boucher bench.

September 10

JD270 and D7E working up to Boucher bench.

September 11

14G graded the entire road from 60 Mile River to lower Boucher Creek.

September 12

JD270 and D7E continued up stream on right limit bench.

September 13

JD270 hydraulic pump failed, machine was parked for the season. Due to cooler temps and shorter days the road was halted until next year.

September 14

UH-09 was walked from Granite Creek to Bentley's first claim.

September 15-20

Used the UH-09 to prospect Bentley's lower claims. Numerous pits and trenches were dug from base line and towards the left limits. Right limit testing proved to be fine and little to no gold. Some holes permafrost was found. All thawed holes filled with water due to high water table. Sampling the pits were not the most effective panning and 5 gallon buckets were taken to process in town.

UH-09 and D7E walked 4 km up stream.