

VICTORIA CREEK MINING

BORE HOLE # VC-002



Field Boring Log

Claim: TERRY 10

Block I.D. # P 26 226

Site Name: Area 1 VC-001 Quadrant: _____

Boring No _____ Monitoring Well No _____

Quadrangle: _____ Sec _____ T _____ R _____

Surface Elevation 1208m Completion Depth: ~1206.5m

UTM (or State Plane) Coord. N. (X) _____ E (Y) _____

Auger Depth _____ Rotary Depth _____

Latitude: 62° 05' 42" Longitude: 137° 08' 03.7"

Date Start: Aug. 2, 2016 Finish: Aug. 2, 2016

Boring Location: Area #1

Drilling Equipment: _____

SAMPLES							Personnel
Sample No.	Sample Wt.	Sample Vol.	Concentrate Wt.	Gold Wt.	Gold Grade	G - D - H - H -	
Line 1	160 (0.5ft)	10.4					
VC-002							

Elev.	Description of Material	Graphic Log	Depth In Feet
1208m	dark brown silt + v. fine sand poorly sorted with subang to subrounded pebbles & boulders	↑	5ft
1206m			↓
1206.5m			

Unable to drill past 5ft (Boulders)

VICTORIA CREEK MINING

BORE HOLE # VC-003



Field Boring Log

Claim: Terry 10

Block I.D. # P26 225

Site Name: Area 1 Quadrant: _____
VC-003

Boring No _____ Monitoring Well No _____

Quadrangle _____ Sec _____ T _____ R _____

Surface Elevation 1708m Completion Depth: ~1706.5

UTM (or State Plane) Coord N. (X) _____ E (Y) _____

Auger Depth _____ Rotary Depth _____

Latitude: 62° 05' 43" Longitude: 137° 08' 03"

Date Start: Aug. 2, 2016 Finish: Aug. 2, 2016

Boring Location: Geophysics Line 1 @ 170m Area #1

Drilling Equipment: _____

SAMPLES							Personnel
Sample No.	Sample Wt.	Sample Vol.	Concentrate Wt.	Gold Wt.	Gold Grade	G -	REMARKS
kg						D -	
						H -	Unable to drill past 5ft.
	N/A					H -	

Elev. (m)	Description of Material	Graphic Log	Depth In Feet
1208m	V. fine sand - silt, matrix-supported, poorly sorted, subang - subrounded pebbles.	[Vertical scale with 5ft and 10ft markers]	5ft
1207			5ft
1206			
1206.5			

VC-003

VICTORIA CREEK MINING

BORE HOLE # PIT-002



Field Boring Log

Claim: TERRY 10

Block I.D. # P26226

Quadrant: _____

Site Name: PIT-002

Boring No _____ Monitoring Well No _____

Quadrangle: _____ Sec _____ T _____ R _____

Surface Elevation 1709m Completion Depth: 1205m

UTM (or State Plane) Coord N. (X) _____ E (Y) _____

Auger Depth _____ Rotary Depth _____

Latitude: 62° 05' 42" Longitude: 137° 08' 12.3"

Date Start: Aug. 2, 2016 Finish: Aug. 2, 2016

Boring Location: Area #1

Drilling Equipment: Excavator

SAMPLES							Personnel
Sample No.	Sample Wt.	Sample Vol.	Concentrate Wt.	Gold Wt.	Gold Grade	G -	
						D -	
						H -	
						H -	

Elev.	Description of Material	Graphic Log	Depth In Feet
1209			0
1208	Brown, v-fine sand - silt, matrix-supported, 50% sub ang-ang clasts, pebbles to boulders		5ft
1207	Dark brown, v. fine sand, matrix supported, poorly sorted, 40-50% clasts (pebbles - boulders)		10ft
1206	Dark Brown, medium sand (gravel), clast supported, poorly sorted with sub angular - sub rounded clasts (pebbles to some boulders)		13ft
1205			

Unable to excavate further, possible bedrock boundary

PIT-002

VICTORIA CREEK MINING

BORE HOLE # PIT-003



Field Boring Log

Claim: _____

Block I.D. # P 26227

Site Name: PIT-003 (or Line 1 180m) PIT-003 Quadrant: _____

Boring No _____ Monitoring Well No _____

Quadrangle _____ Sec _____ T _____ R _____

Surface Elevation 1207m Completion Depth: 1199.7

UTM (or State Plane) Coord N. (X) 0388451 E (Y) 6886607 ± 4m

Auger Depth _____ Rotary Depth _____

Latitude _____ Longitude _____

Date Start: Aug. 3, 2014 Finish: Aug. 3, 2014

Boring Location: _____ Area # 1

Drilling Equipment: _____

SAMPLES							Personnel
Sample No.	Sample Wt.	Sample Vol.	Concentrate Wt.	Gold Wt.	Gold Grade	G - D - H - H -	
1	21.2						
2	23						
3	31.6						
4	26.7			Zp			
5	22						

Elev.	Description of Material	Graphic Log	Depth In Feet
1207m	Tan-fale Brown, v. fine sand-silt matrix supported, poorly sorted, 30% clasts, subangular	↑	5ft
	Light Brown, v. fine sand-silt, matrix supported, poorly sorted, 50-60% angular clasts, pebbles-boulders	↓	10ft
	Brown, v. fine sand-silt, clast-supported poorly sorted, 70% subangular clasts, pebbles to boulders		17ft
201m	Brown, v. fine sand-silt, clast-supported, poorly sorted 70% sub ang clasts, pebbles-boulders		20m
1200			24ft

*Cream coloured ash observed. Pic # 6

1207m
201m
1200
1199.7

PIT-003

VICTORIA CREEK MINING

BORE HOLE # VC-006



Field Boring Log

Claim: TERRY 6

Block I.D. # P 26222

Quadrant: _____

Site Name: _____

Boring No _____ Monitoring Well No _____

Quadrangle: _____ Sec _____ T _____ R _____

Surface Elevation 1181m Completion Depth: 1177

UTM (or State Plane) Coord. N. (X) 0 389 102 E. (Y) 6 886 245

Auger Depth _____ Rotary Depth _____

Latitude: _____ Longitude: _____

Date Start: Aug 5, 2016 Finish: Aug 5, 2016

Boring Location: _____

Drilling Equipment: _____

Elev.	Description of Material	Graphic Log	Depth In Feet	SAMPLES					Personnel	REMARKS
				Sample No.	Sample Wt.	Sample Vol.	Concentrate Wt.	Gold Wt.	Gold Grade	
1181m	Organic, Light Brown, sand-silt		0							
			5ft		19.9					
	Light Brown, v. fine sand-silt, 40% subangular clasts									
			10ft		17.1			3sp		
	Brown, v. fine sand-silt, matrix-supported 50% subangular clasts									
			13ft		6.5					
1177	End									•Cease drilling stuck

VC-006

VICTORIA CREEK MINING

BORE HOLE # PIT-007



Field Boring Log

Claim: _____

Block I.D. # P 26227

Site Name: PIT-007 Quadrant: _____

Boring No _____ Monitoring Well No _____

Quadrangle: _____ Sec _____ T _____ R _____

Surface Elevation 1215m Completion Depth: 1210.4m

UTM (or State Plane) Coord N. (X) 0 388 298 E (Y) 6 886 637 ±4m

Auger Depth _____ Rotary Depth _____

Latitude _____ Longitude _____

Date Start: Aug. 5, 2016 Finish: Aug. 5, 2016

Boring Location _____

Drilling Equipment _____

SAMPLES							Personnel
Sample No.	Sample Wt.	Sample Vol.	Concentrate Wt.	Gold Wt.	Gold Grade	G. D. H. H.	
21.4							
23			4 sp 1 fl				
26.1			3 sp 2 fl				
29 wet							

Elev.	Description of Material	Graphic Log	Depth In Feet
1215m	Dark Brown, silt - v. fine sand, matrix-supported, poorly sorted, ~30% subangular clasts	↑	5ft
	Brown, v. f. sand-silt, matrix-supported, poorly sorted, 20-30% subrounded-subangular clasts, pebbles-boulders	↓	10ft
	Dark Brown, v. fine sand-silt, poorly sorted, 60% angular-subangular clasts		12ft
1210.4m	Orange-brown, v. fine sand silt, matrix sup, 10% subangular clasts, poorly sorted		15ft
	End		

Abundant FeS_2 pyrite (hemidk?)
Pit flooded

PIT-007

VICTORIA CREEK MINING

BORE HOLE # VC-009



Field Boring Log

Claim: CREEK CLAIM

Block I.D. # P 26328

Quadrant: _____

Site Name: VC-009

Boring No. _____ Monitoring Well No. _____

Quadrangle: _____ Sec _____ T _____ R _____

Surface Elevation 1133m Completion Depth: 1130.6m

UTM (or State Plane) Coord. N. (X) 0 390 109 E. (Y) 6 885 521 ± 4m

Auger Depth: _____ Rotary Depth: _____

Latitude: _____ Longitude: _____

Date Start: Aug. 7, 2016 Finish: Aug. 7, 2016

Boring Location: _____

Drilling Equipment: _____

Elev.	Description of Material	Graphic Log	Depth In Feet	SAMPLES					Personnel	REMARKS	
				Sample No.	Sample Wt. kg	Sample Vol.	Concentrate Wt.	Gold Wt.	Gold Grade		G. D. H. H.
1133m	Tan-Pale Brown, coarse-medium sand-silt, matrix supported, poorly sorted, ~30% subrounded clasts, pebble to boulders.	[Scale]	5ft	(0-5ft)	6.5 kg						
1130.6m			3ft	(5-8ft)	9.4 kg						3 micro sp. ?
			10ft								
			5ft								

VC-009

VICTORIA CREEK MINING

BORE HOLE # VC-010



Field Boring Log

Claim: PLACER CLAIM

Block I.D. # P 26085

Quadrant: _____

Boring No. _____ Monitoring Well No. _____

Site Name: VC-010

Surface Elevation 1138m Completion Depth: 1128.7m

Quadrangle: _____ Sec _____ T _____ R _____

Auger Depth: _____ Rotary Depth: _____

UTM (or State Plane) Coord. N. (X) 0 389 838 E (Y) 6 885 777 ^{±6m}

Date Start: Aug. 7, 2016 Finish: Aug. 7, 2016

Latitude: _____ Longitude: _____

Boring Location: _____

Drilling Equipment: _____

SAMPLES							Personnel
Sample No.	Sample Wt.	Sample Vol.	Concentrate Wt.	Gold Wt.	Gold Grade	G. D. H. H.	
(0-5')	8.0 kg						
(5-10')	22.6 kg			7sp 1fl			
(10-15')	13.6 kg			3sp 1fl			
(15-20')	19.3 kg			4fl 1sp			
(20-25')	25.8 kg			4fl 1sp			
(25-30')	26.5 kg			2fl 3sp			

Elev.	Description of Material	Graphic Log	Depth In Feet
1138m			0'
	Pale grey/brown, coarse-medium sand, clast-supported, poorly sorted, ~50% subrounded-subangular clasts.		5'
	Dark brown, coarse sand, clast-supported, poorly sorted, ~60% subrounded-angular clasts.		10'
			15'
			20'
			25'
			28.7m

Wet and possibly mixed material samples



VC-010

128.7m

VICTORIA CREEK MINING

BORE HOLE # PIT-009



Field Boring Log

Claim: TERRY 8

Block I.D. # P 26224

Site Name: PIT-009 Quadrant: _____

Boring No. _____ Monitoring Well No. _____

Quadrangle: _____ Sec _____ T _____ R _____

Surface Elevation 1194 Completion Depth: 1189.4m

UTM (or State Plane) Coord. N. (X) 0 388 707 E. (Y) 6 886 464 ±4m

Auger Depth: _____ Rotary Depth: _____

Latitude: _____ Longitude: _____

Date Start: Aug. 8, 2016 Finish: Aug. 8, 2016

Boring Location: _____

Drilling Equipment: _____

SAMPLES							Personnel
Sample No.	Sample Wt. kg	Sample Vol.	Concentrate Wt.	Gold Wt.	Gold Grade	G- D- H- H-	
(0-5ft)	13.6 kg						
(5-10ft)	27.0 kg			1 fl			
(10-15ft)	28.4 kg			4 fl 4 sp			
PIT-009							

Elev.	Description of Material	Graphic Log	Depth In Feet
194m	Dark Brown, dark grey-black organics	[Graphic Log]	0-5ft
	Dark-Brown, coarse-fine sand, matrix-supported, poorly sorted, 30-40% subrounded-subangular clasts, pebbles to some boulders.	[Graphic Log]	5-10ft
	Light Brown, coarse-fine sand, matrix supported, poorly sorted, ~40% subrounded-subangular clast pebbles to boulders	[Graphic Log]	10-15ft
189.4m			

REMARKS

Pic # 7 of Aug. 8, 2016

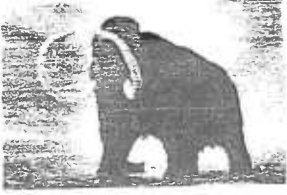
Pic # 8 of Aug. 8, 2016

• Cease digging, allow permafrost to melt.
Pic 10, 11, 12 pan results

VICTORIA CREEK MINING

BORE HOLE #

PIT-024



Field Boring Log

Claim: TERRY 6

Block I.D. # P 26222

Boring No. _____ Monitoring Well No. _____

Surface Elevation 1183m Completion Depth 1180m

Auger Depth: _____ Rotary Depth: _____

Date Start Aug. 12, 2016 Finish Aug. 12, 2016

Site Name: PIT-024 Quadrant: _____

Quadrangle: _____ Sec _____ T _____ R _____

UTM (or State Plane) Coord. N. (X) 0 388 994 E (Y) 6 886 308 ±5m

Latitude: _____ Longitude: _____

Boring Location: _____

Drilling Equipment: _____

SAMPLES							Personnel
Sample No.	Sample Wt.	Sample Vol.	Concentrate Wt.	Gold Wt.	Gold Grade	REMARKS	
							G- D- H- H-
	12.2 kg						
	14.5 kg						

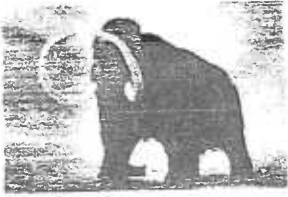
Elev.	Description of Material	Graphic Log	Depth In Feet
1183m	Pale teal-grey silt with a few coarse sand lenses, clasts ≤ 1mm	[Hand-drawn log showing silt texture]	0ft to 5ft
	Tan, very fine sand	[Hand-drawn log showing fine sand texture]	5ft to 10ft
1180m			10ft to 25ft

PIT-024

VICTORIA CREEK MINING

BORE HOLE #

PJT-025



Field Boring Log

Claim: TERRY 6

Block I.D. # P 2622

Quadrant: _____

Boring No. _____ Monitoring Well No. _____

Site Name: PJT-025

Surface Elevation 1174m Completion Depth: 1169.4m

Quadrangle: _____ Sec _____ T _____ R _____

Auger Depth: _____ Rotary Depth: _____

UTM (or State Plane) Coord. N. (X) 0 389 079 E (Y) 6 886 290 ± 5m

Date Start: Aug. 12, 2016 Finish: Aug. 12, 2016

Latitude: _____ Longitude: _____

Boring Location: _____

Drilling Equipment: _____

Elev.	Description of Material	Graphic Log	Depth In Feet	SAMPLES					Personnel	REMARKS
				Sample No.	Sample Wt.	Sample Vol.	Concentrate Wt.	Gold Wt.	Gold Grade	
1174m	Mixed organics, soil; Greyish Brown gravel		0ft							
			5ft	(0-5ft)	16.5 kg					
	Greyish Brown gravel matrix-supported, poorly sorted				21.7 kg		2 sp			
			10ft	(5-10ft)	17.9 kg wet		4 sp 3 ft			
1169.4m	End		15ft							
			20ft							
			25ft							

PJT-025

VICTORIA CREEK MINING

BORE HOLE # PJT-026



Field Boring Log

Claim: PLACER CLAIM

Block I.D. # P 26108

Quadrant: _____

Boring No. _____ Monitoring Well No. _____

Site Name: PJT-026

Surface Elevation 1141 Completion Depth: 1136.4

Quadrangle: _____ Sec _____ T _____ R _____

Auger Depth: _____ Rotary Depth: _____

UTM (or State Plane) Coord. N. (X) 0 389 801 E (Y) 6 885 830 ±4m

Date Start: Aug. 13, 2016 Finish: Aug. 13, 2016

Latitude: _____ Longitude: _____

Boring Location: _____

Drilling Equipment: _____

SAMPLES							Personnel
Sample No.	Sample Wt.	Sample Vol.	Concentrate Wt.	Gold Wt.	Gold Grade	G- D- H- H-	
(0-5 ft)	22.0 kg wet			1 sp.			
(5-10 ft)	20.3 kg wet			2 sp.			
(10-15 ft)	21.1 kg wet			6 fl 5 sp.			
PJT-026							

Elev.	Description of Material	Graphic Log	Depth In Feet
1141m	Pale grey/brown, coarse sand, clast supported, poorly sorted, ~40% subrounded-subangular clasts, pebbles-boulders	[Scale]	0 ft
	Dark brown, coarse sand-silt, clast supported, poorly sorted, ~60% subrounded-subangular clasts, pebbles-boulders	[Scale]	5 ft
		[Scale]	10 ft
1136.4m	End	[Scale]	15 ft
		[Scale]	20 ft
		[Scale]	25 ft

VICTORIA CREEK MINING

BORE HOLE #

PIT-027



Field Boring Log

Claim: PLACER CLAIM

Block I.D. # P 26085

Boring No. _____ Monitoring Well No. _____

Surface Elevation 1138 Completion Depth: 1131.9m

Auger Depth: _____ Rotary Depth: _____

Date Start: Aug. 13, 2016 Finish: Aug. 13, 2016

Site Name: PIT-027 Quadrant: _____

Quadrangle: _____ Sec _____ T _____ R _____

UTM (or State Plane) Coord. N. (X) 0 389 838 E (Y) 6 885 777^{+6m}

Latitude: _____ Longitude: _____

Boring Location: _____

Drilling Equipment: _____

Elev.	Description of Material	Graphic Log	Depth In Feet	SAMPLES					REMARKS
				Sample No.	Sample Wt.	Sample Vol.	Concentrate Wt.	Gold Wt.	
1138m	Pale grey/brown, coarse sand, clast-supported, poorly sorted, ~50% subrounded-subangular clasts	[0-5ft]	0ft	15.3 kg			1 fl 2 sp		
			5ft						
	Dark brown, coarse sand, clast-supported, poorly sorted, ~60% subrounded-subangular clasts	[5-10ft]		27.5 kg			10 sp 2 fl		
			10ft						
		[10-15ft]		23.9 kg			4 fl 4 sp		
			15ft						
		[15-20ft]		15.2 kg			6 sp 2 fl		
1131.9m			20ft						
	End								
			25ft						

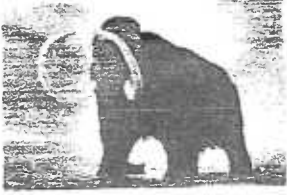
G-
D-
H-
H-

PIT-027

VICTORIA CREEK MINING

BORE HOLE #

PIT-028



Field Boring Log

Claim: TERRY 1

Block I.D. # P 26217

Quadrant: _____

Boring No. _____ Monitoring Well No. _____

Site Name: PIT-028

Surface Elevation 1149m Completion Depth: 1147.5m

Quadrangle: _____ Sec _____ T _____ R _____

Auger Depth: _____ Rotary Depth: _____

UTM (or State Plane) Coord. N. (X) 0 389 670 E (Y) 6 885 911 ±4m

Date Start: Aug. 13, 2016 Finish: Aug. 13, 2016

Latitude: _____ Longitude: _____

Boring Location: _____

Drilling Equipment: _____

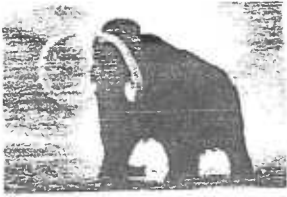
Elev.	Description of Material	Graphic Log	Depth In feet	SAMPLES					Personnel	REMARKS
				Sample No.	Sample Wt.	Sample Vol.	Concentrate Wt.	Gold Wt.	Gold Grade	
1149m	Light Brown, coarse sand, matrix-supported poorly sorted, ~30% subang-subrounded clasts	[Scale]	0ft	(C)-5ft	16.1 kg	[Scale]	[Scale]	[Scale]	[Scale]	[Scale]
1147.5m			5ft							
			10ft							
			15ft							
			20ft							
			25ft							

PIT-028

VICTORIA CREEK MINING

BORE HOLE #

PIT-029



Field Boring Log

Claim: CREEK CLAIM

Block I.D. # P 26447

Quadrant: _____

Boring No. _____ Monitoring Well No. _____

Site Name: PIT-029

Surface Elevation: 1128m Completion Depth: 1125m

Quadrangle: _____ Sec _____ T _____ R _____

Auger Depth: _____ Rotary Depth: _____

UTM (or State Plane) Coord. N. (X) 0 390 175 E (Y) 6 885 320 ±4m

Date Start: Aug. 13, 2016 Finish: Aug. 13, 2016

Latitude: _____ Longitude: _____

Boring Location: _____

Drilling Equipment: _____

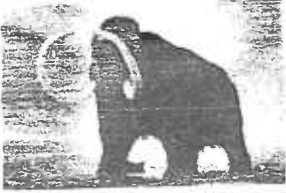
Elev.	Description of Material	Graphic Log	Depth In Feet	SAMPLES					Personnel	REMARKS	
				Sample No.	Sample Wt.	Sample Vol.	Concentrate Wt.	Gold Wt.	Gold Grade		G - D - H - H -
1128m	Dark Brown, mixed organics/soil,		0ft								
			5ft								
	Reddish Brown, coarse sand-silt, matrix-supported poorly sorted, ~40% subrounded-subangular clasts		7ft								
	Light Brown, coarse sand, matrix-supported, poorly sorted, ~40% subrounded-subangular clasts.		10ft								
1125m			15ft								
			20ft								
			25ft								

PIT-029 (5-10ft) (5-7ft) (0-5ft)

VICTORIA CREEK MINING

BORE HOLE #

PIT-030



Field Boring Log

Claim: CREEK CLAIM

Block I.D. # P 26447

Quadrant: _____

Boring No. _____ Monitoring Well No. _____

Site Name: PIT-030

Surface Elevation 1127m Completion Depth: 1125.5

Quadrangle: _____ Sec _____ T _____ R _____

Auger Depth: _____ Rotary Depth: _____

UTM (or State Plane) Coord. N. (X) 0390234 E (Y) 6885378 +4m

Date Start: Aug 13, 2016 Finish: Aug 13, 2016

Latitude: _____ Longitude: _____

Boring Location: _____

Drilling Equipment: _____

Elev.	Description of Material	Graphic Log	Depth In Feet	SAMPLES					Personnel	REMARKS
				Sample No.	Sample Wt.	Sample Vol.	Concentrate Wt.	Gold Wt.	Gold Grade	
1127m	Light Brown, coarse sand, matrix supported poorly sorted, ~40% subrounded-subangular clasts	[Hand-drawn log showing depth from 0 to 5 feet]	0ft							
			5ft	26.2 kg		2 fl 1 sp				
1125.5m										
			10ft							
			15ft							
			20ft							
			25ft							