

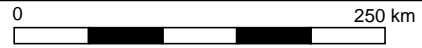
**TRIRFECTA GOLD LTD.**

FIGURE 1

ARCHER, CATHRO & ASSOCIATES (1981) LIMITED

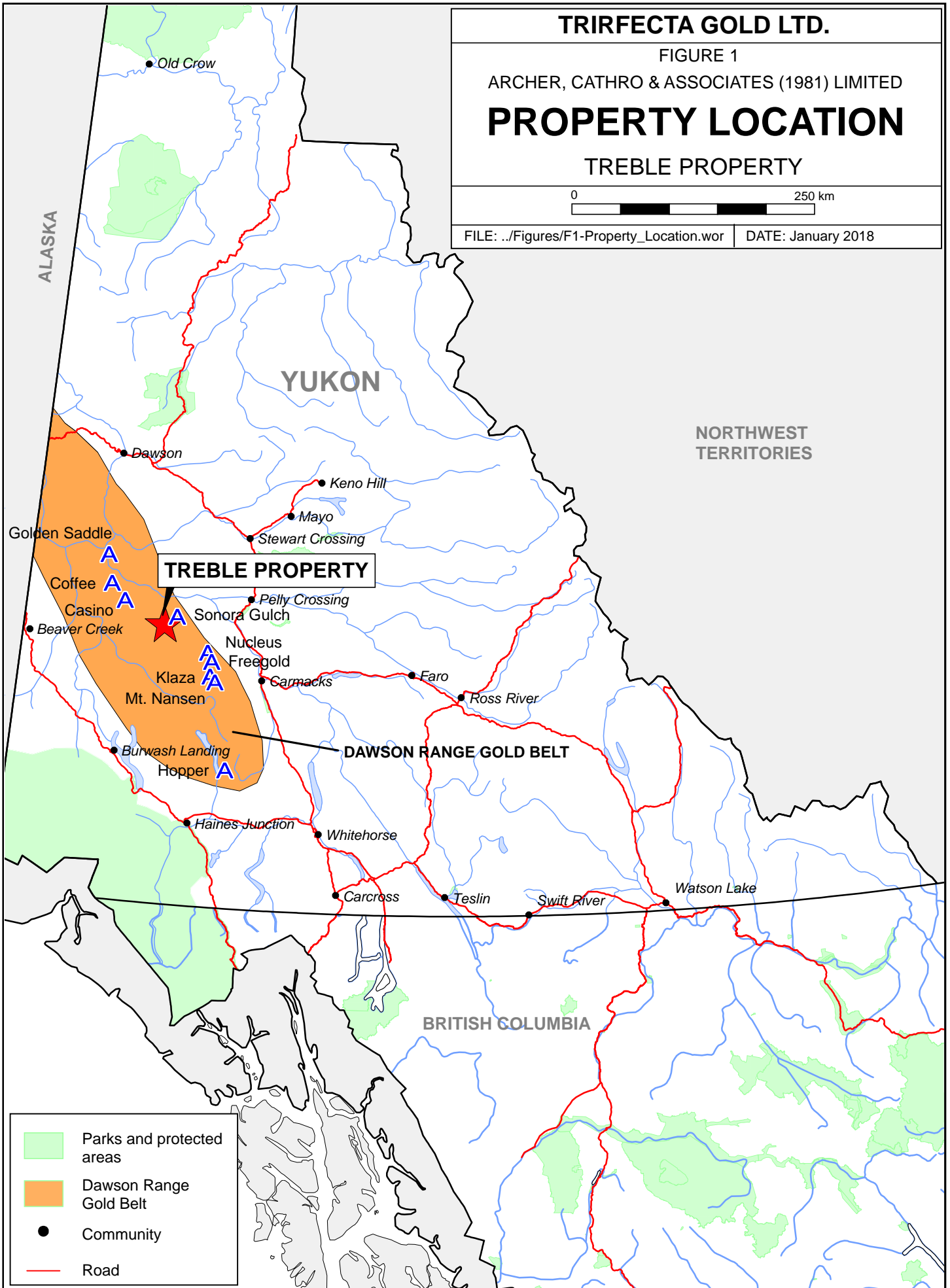
**PROPERTY LOCATION**

TREBLE PROPERTY



FILE: ../Figures/F1-Property\_Location.wor

DATE: January 2018



ALASKA

YUKON

NORTHWEST TERRITORIES

**TREBLE PROPERTY**

**DAWSON RANGE GOLD BELT**

BRITISH COLUMBIA

- Parks and protected areas
- Dawson Range Gold Belt
- Community
- Road