
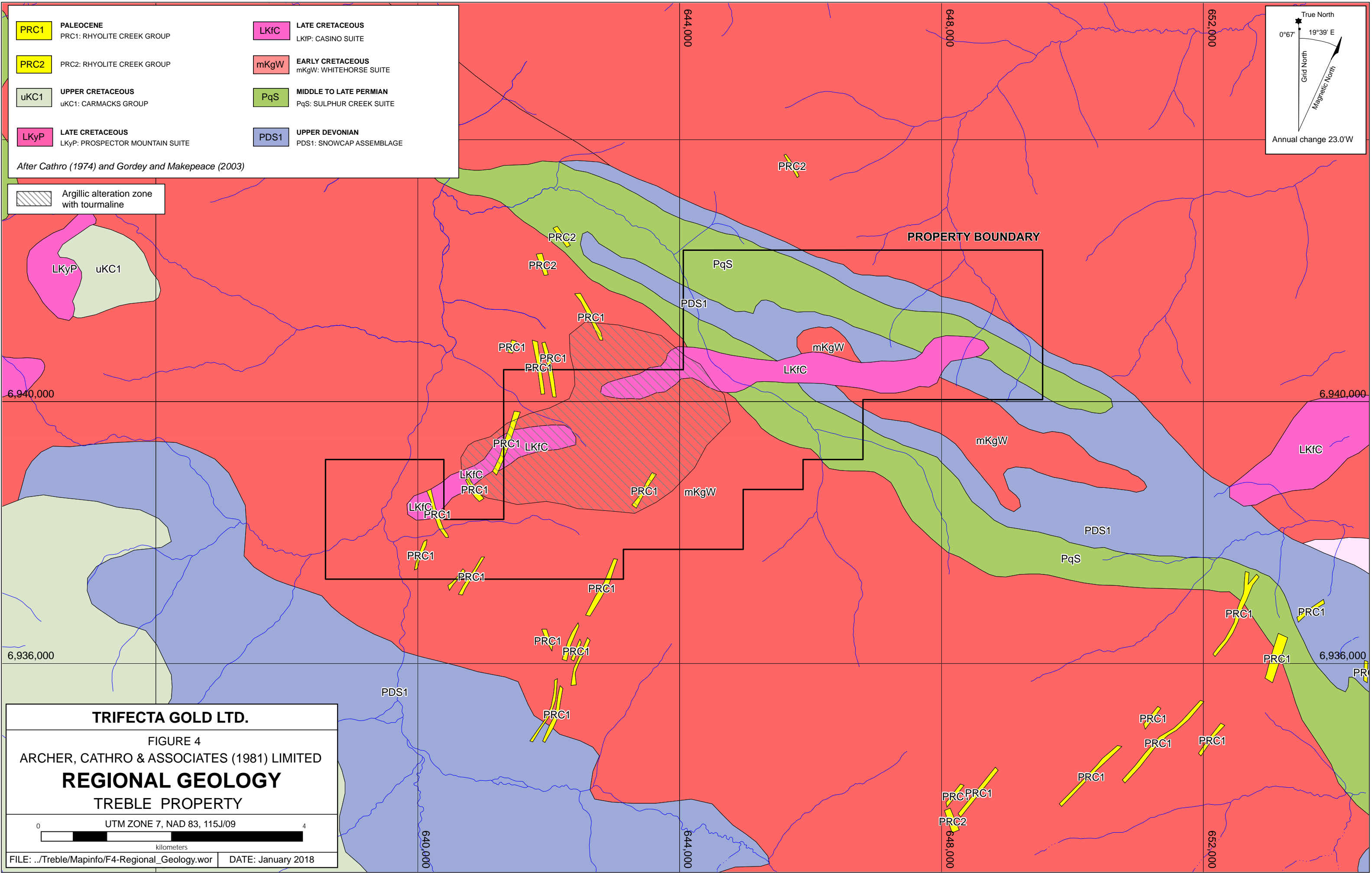


PRC1	PALEOCENE PRC1: RHYOLITE CREEK GROUP	LKfC	LATE CRETACEOUS LKfC: CASINO SUITE
PRC2	PALEOCENE PRC2: RHYOLITE CREEK GROUP	mKgW	EARLY CRETACEOUS mKgW: WHITEHORSE SUITE
uKC1	UPPER CRETACEOUS uKC1: CARMACKS GROUP	PqS	MIDDLE TO LATE PERMIAN PqS: SULPHUR CREEK SUITE
LKyP	LATE CRETACEOUS LKyP: PROSPECTOR MOUNTAIN SUITE	PDS1	UPPER DEVONIAN PDS1: SNOWCAP ASSEMBLAGE

After Cathro (1974) and Gordey and Makepeace (2003)

True North
0°67' 19°39' E
Grid North
Magnetic North
Annual change 23.0'W

 Argillic alteration zone with tourmaline



TRIFECTA GOLD LTD.

FIGURE 4
ARCHER, CATHRO & ASSOCIATES (1981) LIMITED
REGIONAL GEOLOGY
TREBLE PROPERTY

0 UTM ZONE 7, NAD 83, 115J/09 4
kilometers

FILE: ../Treble/Mapinfo/F4-Regional_Geology.wor DATE: January 2018