

Late Cretaceous: RANCHERIA SUITE

LKqR Boswell Pluton: quartz monzonite and quartz feldspar pluton.

Mid Cretaceous: CASSIAR SUITE

mKgC Quiet Lake Batholith: quartz monzonite

Early to Middle Jurassic: RICHTHOFEN FORMATION

JL1 submarine fan complex mass-flow conglomerates and deep-water turbidites

Early Jurassic: LONG LAKE SUITE

EJgL Sawtooth Pluton: massive to weakly foliated, fine to coarse grained biotite, biotite-muscovite and biotite-hornblende quartz monzonite to granite.

Devonian and Mississippian: FINLAYSON FORMATION

DMF1 mafic volcanic rocks including cl-bi-schist, amphibolite, hb-gneiss, ac-pg-cl-bi-schist, pg-ac-cl-schist, phyllite, quartzite and ultramafics.

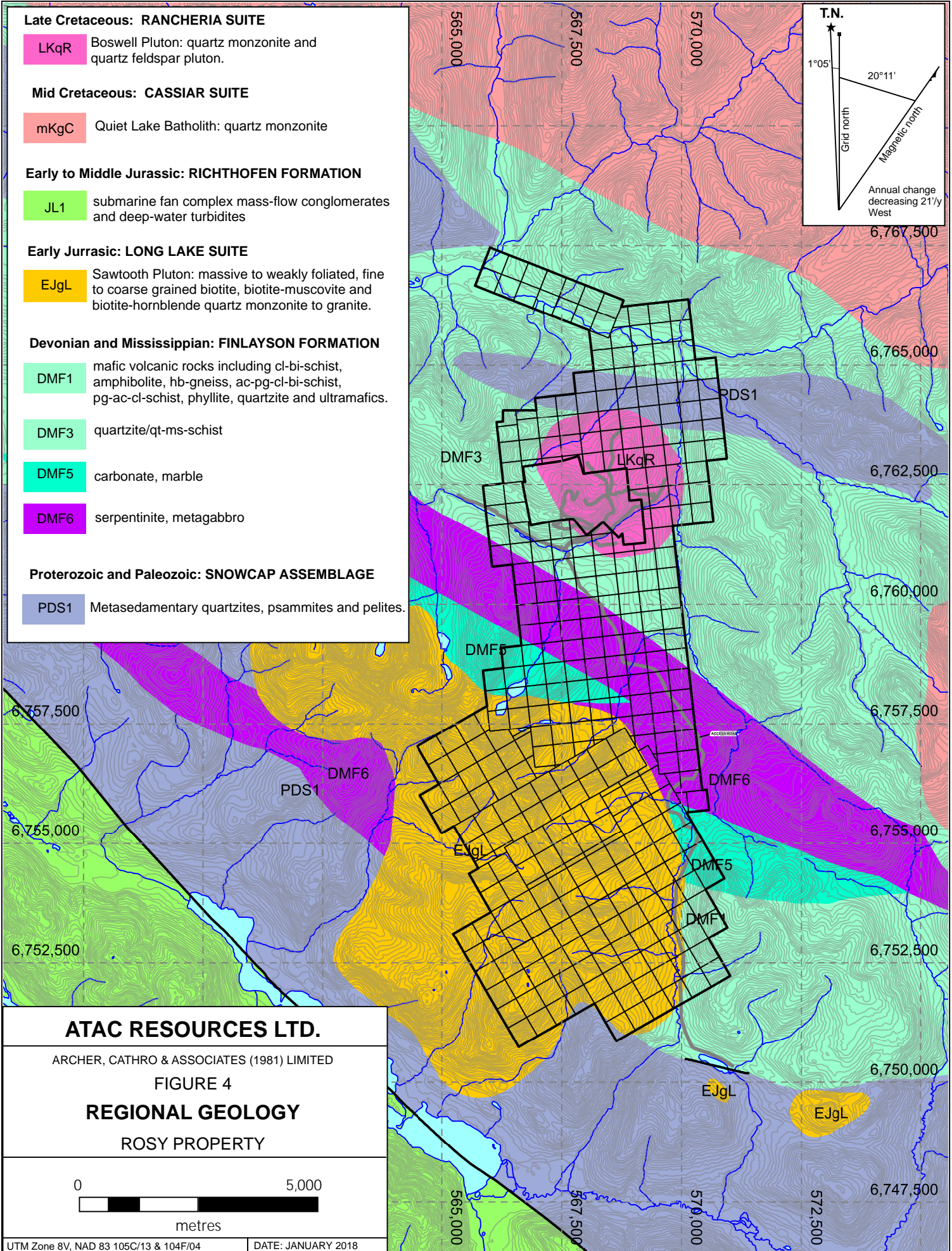
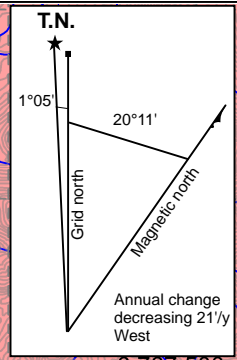
DMF3 quartzite/qt-ms-schist

DMF5 carbonate, marble

DMF6 serpentinite, metagabbro

Proterozoic and Paleozoic: SNOWCAP ASSEMBLAGE

PDS1 Metasedimentary quartzites, psammites and pelites.



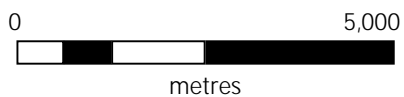
ATAC RESOURCES LTD.

ARCHER, CATHRO & ASSOCIATES (1981) LIMITED

FIGURE 4

REGIONAL GEOLOGY

ROSY PROPERTY



UTM Zone 8V, NAD 83 105C/13 & 104F/04

DATE: JANUARY 2018