

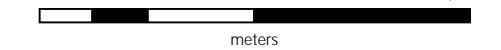
**STRATEGIC METALS LTD.**

FIGURE 6

ARCHER, CATHRO & ASSOCIATES (1981) LIMITED

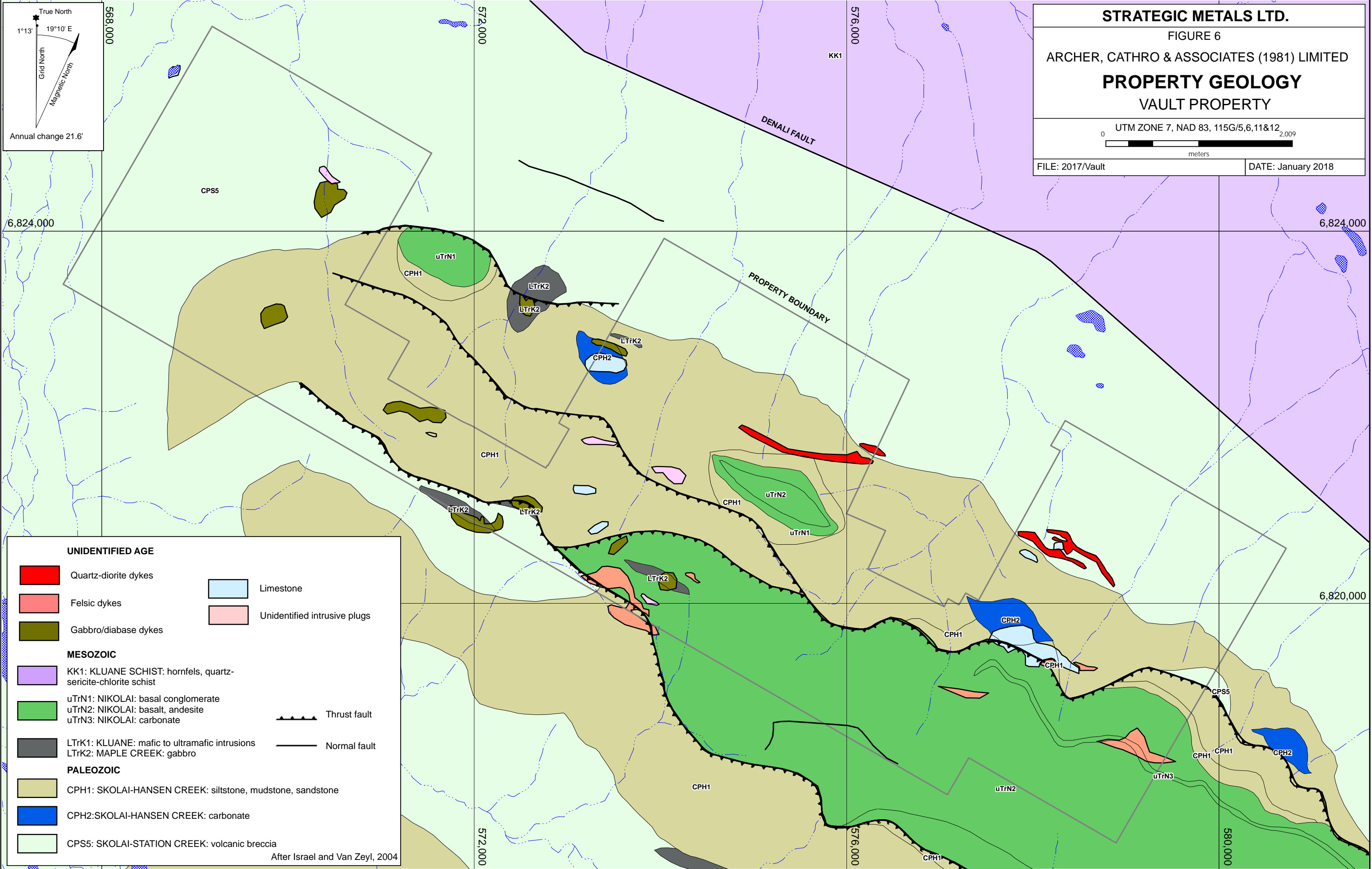
**PROPERTY GEOLOGY**  
VAULT PROPERTY

UTM ZONE 7, NAD 83, 115G/5,6,11&12



FILE: 2017/Vault

DATE: January 2018



**UNIDENTIFIED AGE**

- Quartz-diorite dykes
- Felsic dykes
- Gabbro/diabase dykes
- Limestone
- Unidentified intrusive plugs

**MESOZOIC**

- KK1: KLUANE SCHIST: hornfels, quartz-sericite-chlorite schist
- uTrN1: NIKOLAI: basal conglomerate
- uTrN2: NIKOLAI: basalt, andesite
- uTrN3: NIKOLAI: carbonate
- LTrK1: KLUANE: mafic to ultramafic intrusions
- LTrK2: MAPLE CREEK: gabbro
- Thrust fault
- Normal fault

**PALEOZOIC**

- CPH1: SKOLAI-HANSEN CREEK: siltstone, mudstone, sandstone
- CPH2: SKOLAI-HANSEN CREEK: carbonate
- CPS5: SKOLAI-STATION CREEK: volcanic breccia

After Israel and Van Zeyl, 2004