

Project Summary

We had 114 holes drilled on three different sections of our property, Glacier Creek, Big Gold Creek and Little Gold Creek. The drilling was done by a local contractor Sylvain Fleurant with his company Auger Drilling. This drill is mounted on a Nodwell and is a 6" auger drill, this driller has one employee with him at all times, and they bring their own accommodations and are able to haul the drill themselves. When drilling they drill the holes early in the day then collect the samples in pails and do the processing back at camp later in the day, they use a longtom to process the material out of the pail and then pan the concentrate then dry and weigh each gold result separately. They record the depths of material and type of material they come across and record it as they go. I have consolidated these reports for each portion of the property and recorded them on a spreadsheet that is attached. Drilling occurred over a 25 day period, in which Guy Favron and Neil Loveless went for two single day trips to oversee the project and plan how and where the drilling would occur. During our visits we also located posts and survey pins to ensure all drilling was done on our property.

Drilling Program

We had initially split this into three different sections, Glacier Creek, Big Gold Creek, and Little Gold Creek. The drill holes were planned to be in lines where the lines would be approximately 500 feet apart and each drill hole on the lines would start 25 feet from any previous workings and then be located 100 feet apart from there.

Glacier Creek, a total of 20 drill holes were drilled on this section of the creek ranging in depth from 29 ft to 65 ft and ranging in grades from 0 mg to 262 mg. The total depth of drilling on Glacier Creek was 957 feet. All drilling occurred on the right limits of Glacier Creek where it enters Big Creek. All drilling was bordering previous workings both from the dredge and old Cat Miners. We had initially intended on drilling more holes as we were looking for a bench, but the ground appeared to be deeper than initially thought and we were having weaker results the further into the right limit we went, so we decided to begin drilling on Big Gold Creek.

Big Gold Creek, a total of 62 drill holes were drilled on Big Gold, ranging in depth from 9 ft to 36 ft and ranging in grade from 0 mg to 89 mg. The total depth of drilling on Big Gold was 1,262 feet. The drilling occurred upstream from where Glacier Creek runs into Big Gold Creek Valley for about 3500 feet, this valley is virgin for the first 3000 ft and then there are some old workings as it gets close to where Little Gold Creek enters Big Gold Creek. This ground was shallower than expected but the pay streak extended further into the left limit than expected so we had more drill holes here than originally planned.

Little Gold Creek, a total of 32 drill holes were drilled on Little Gold, ranging in depth from 9 ft to 24 ft and ranging in grade from 0 to 36 mg. The total depth of drilling on Little Gold was 505 feet. Drilling on Little Gold occurred on the lower portion of our property and occurred widely

across the creek valley. At first we believed that much of the creek was untouched, but it looks like the centre of the valley has been worked previously, not as extensively as is seen downstream or upstream of the piece that we drilled.

Results

All drill samples were processed at the end of the day by being put through a longtom and then panned down and weighed. Again we separated this project into three separate parts, on each piece we have found economic values worth mining. After reviewing the drill results we have established three different categories marked by red, blue or purple polygons.

Red Polygons are areas that we know have economic values worth mining.

Blue Polygons are areas where the values are a little below what we would call economical but would like to do some bulk sampling to confirm these drill results. As well as these blue polygons may become economical with a rise in gold price.

Purple Polygons are areas that have very low economical values but due to thawed drill holes and the shallowness of the ground we may do some bulk sampling when mining near by.

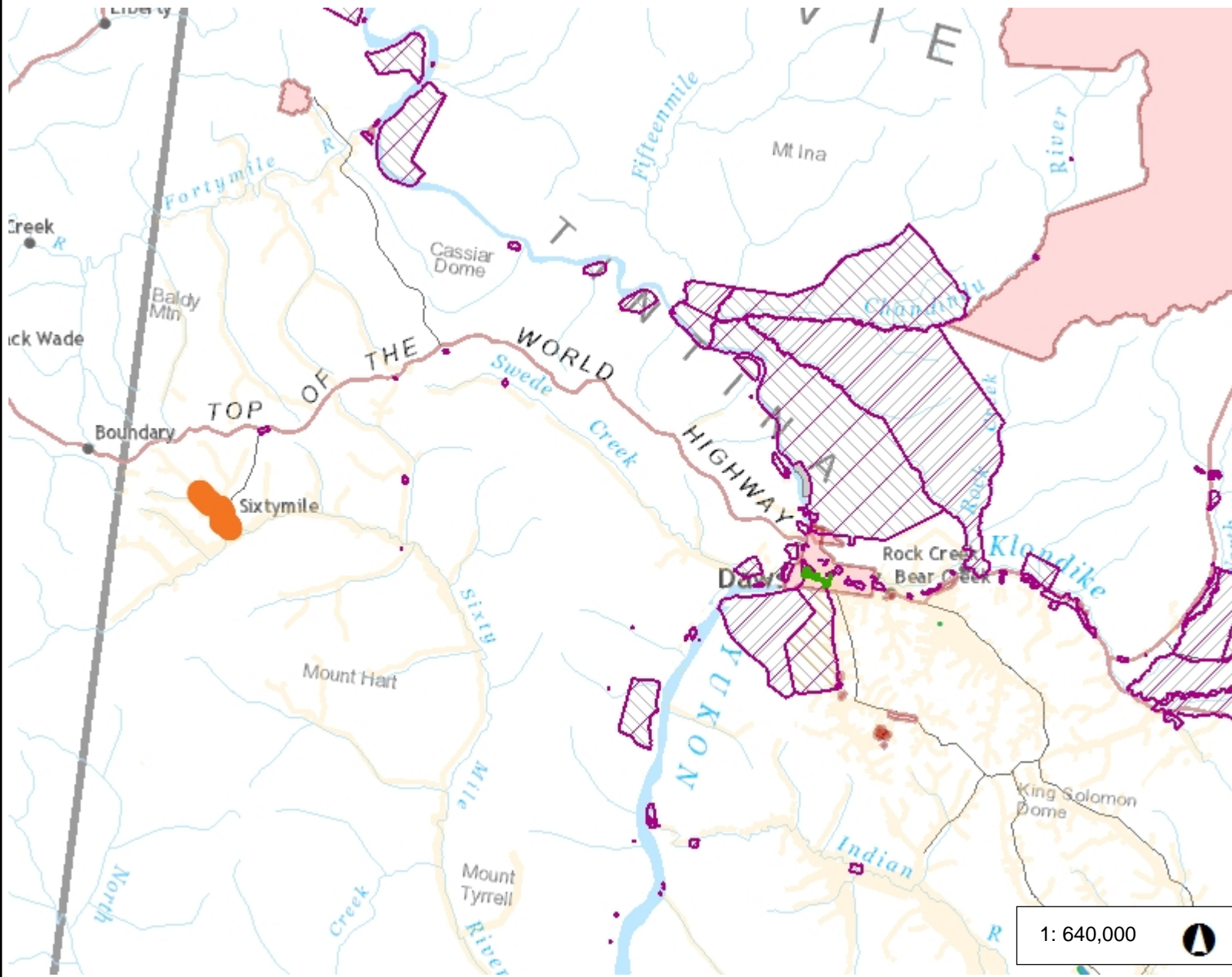
Any area that is not covered by a polygon, means we do not have any plans of mining or testing as the values were too low, area is too difficult to mine or there has not been any testing in the area.

Upon completion of this drill program and looking over the results with Jeff Bond we have been able to determine some future targets that we will look to do some further testing on. We had originally set out to look for a bench on the right limit of Glacier Creek but as the ground got deeper and the samples were getting weaker we moved to other sections of the drill program. Jeff Bond would have liked to have seen more drilling done on the right limit of the Glacier Creek section as there are still signs of a bench. We will look to get more drilling done in this area, in the coming years. On the maps attached I have marked and shown the drill lines we intend to get done.

Conclusion

In conclusion we have found some economically viable mining cuts that we will look to start mining in the near future. This drilling program has informed us of a paystreak on the right limit of previous workings on Glacier Creek, we have found a viable pay streak on Big Gold Creek where there has been no previous mining, and we found a viable right limit paystreak on Little Gold Creek as well as determined that the centre of the creek does appear to have been previously worked which we had not known. We now know where the economically viable parts of our property are and have a good idea where we will begin more testing in the coming years.

Sixty Mile (Big Gold, Little Gold, Glacier)



Legend

- Current Class 1 Notifications
 - Areas defined by OIC
 - First Nation Surveyed Lands -
 - First Nation Unsurveyed Lands
 - Placer Claims (1M)
 - Areas withdrawn from staking
- Settlement Lands (Surveyed)**
- A: Surface and Subsurface Rights
 - B: Surface Rights
 - FS: Fee Simple
 - 4.1.1 Retained Reserve
- Settlement Lands (Unsurveyed)**
- A: Surface and Subsurface Rights
 - B: Surface Rights
 - FS: Fee Simple
 - Interim Protected Lands (Unsu

1: 640,000



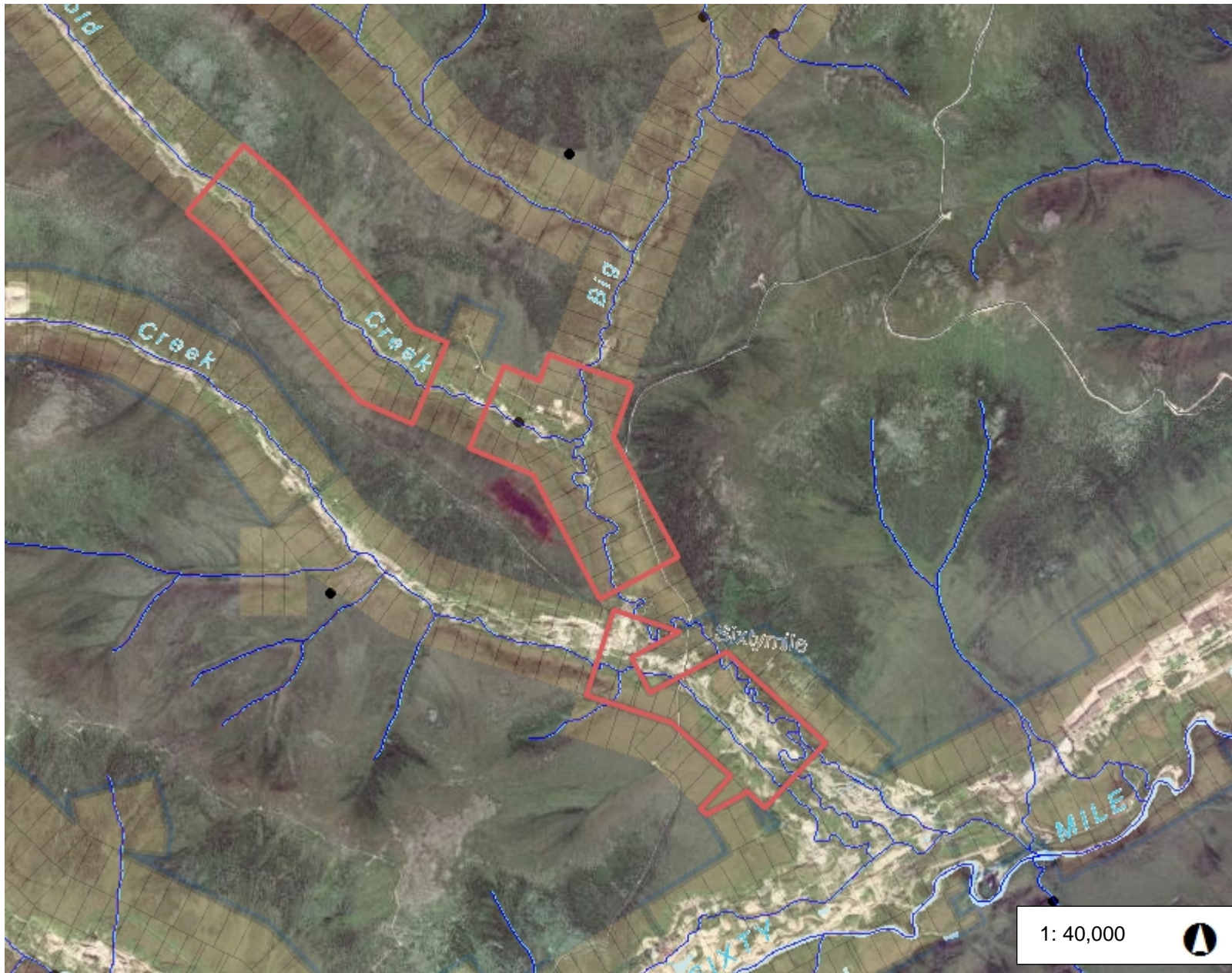
32.5 0 16.26 32.5 Kilometers

Yukon Albers
Produced from: Yukon Mining Viewer

This map is a user generated static output from an Internet mapping site and is for reference only. Data layers that appear on this map may or may not be accurate, current, or otherwise reliable. THIS MAP IS NOT TO BE USED FOR NAVIGATION.
Date Printed: 30-Mar-2017

Notes

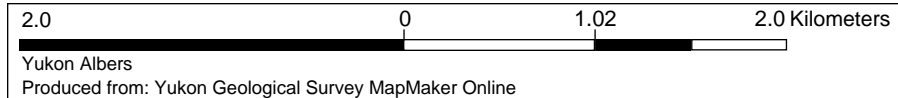
Project is located in the Sixty Mile, in the Dawson Mining District.



Legend

- Placer Claims (50K)**
 - Active and Pending
 - Expired
- Prospecting Leases**
 - Active and Pending
 - Expired
- Placer Mining Land Use Permi**
 - Class 3
 - Class 4
- Placer Baselines (50K)
- Placer Baselines (surveyed)
- Coal Exploration License**
 - Active and Pending
 - Expired
- Coal Mining Lease**
 - Active and Pending
 - Expired
- Placer Stream Classification**
 - Water Quality
 - Low Suitability
 - Moderate-Low Suitability
 - Moderate-Moderate Suitability
 - Moderate-High Suitability
 - High Suitability
 - Areas of Special Consideration
 - Lakes
- Sample Location

1: 40,000



This map is a user generated static output from an Internet mapping site and is for reference only. Data layers that appear on this map may or may not be accurate, current, or otherwise reliable. THIS MAP IS NOT TO BE USED FOR NAVIGATION.
Date Printed: 04-Jan-2018

Notes

Our claims are highlighted using the red bordering.



17 - 66

17 - 67

17 - 50

17 - 49

17 - 48

17 - 47

17 - 46

17 - 73

17 - 74

17 - 75

17 - 44

17 - 43

17 - 42

17 - 41

17 - 40

17 - 45

17 - 39

17 - 38

17 - 37

17 - 36

17 - 35

17 - 34

17 - 32

17 - 31

17 - 30

17 - 33

17 - 29

17 - 28

17 - 27

17 - 26

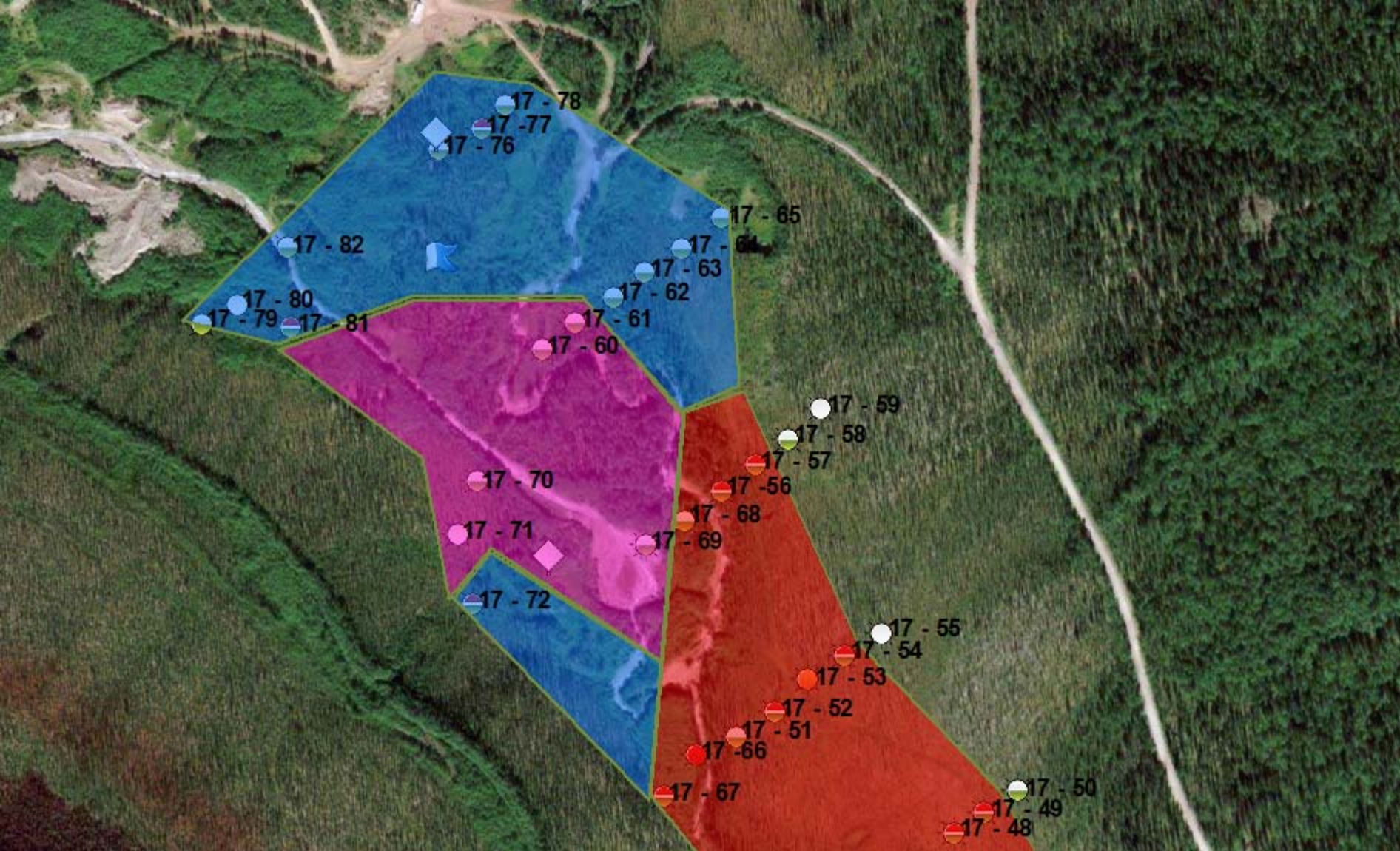
17 - 25

17 - 22

17 - 24

17 - 23

17 - 21



17 - 78

17 - 77

17 - 76

17 - 65

17 - 82

17 - 64

17 - 63

17 - 80

17 - 62

17 - 79

17 - 81

17 - 61

17 - 60

17 - 59

17 - 58

17 - 70

17 - 57

17 - 56

17 - 68

17 - 71

17 - 69

17 - 72

17 - 55

17 - 54

17 - 53

17 - 52

17 - 51

17 - 66

17 - 67

17 - 50

17 - 49

17 - 48

Future Drill Lines



17 - 6

17 - 7

17 - 8

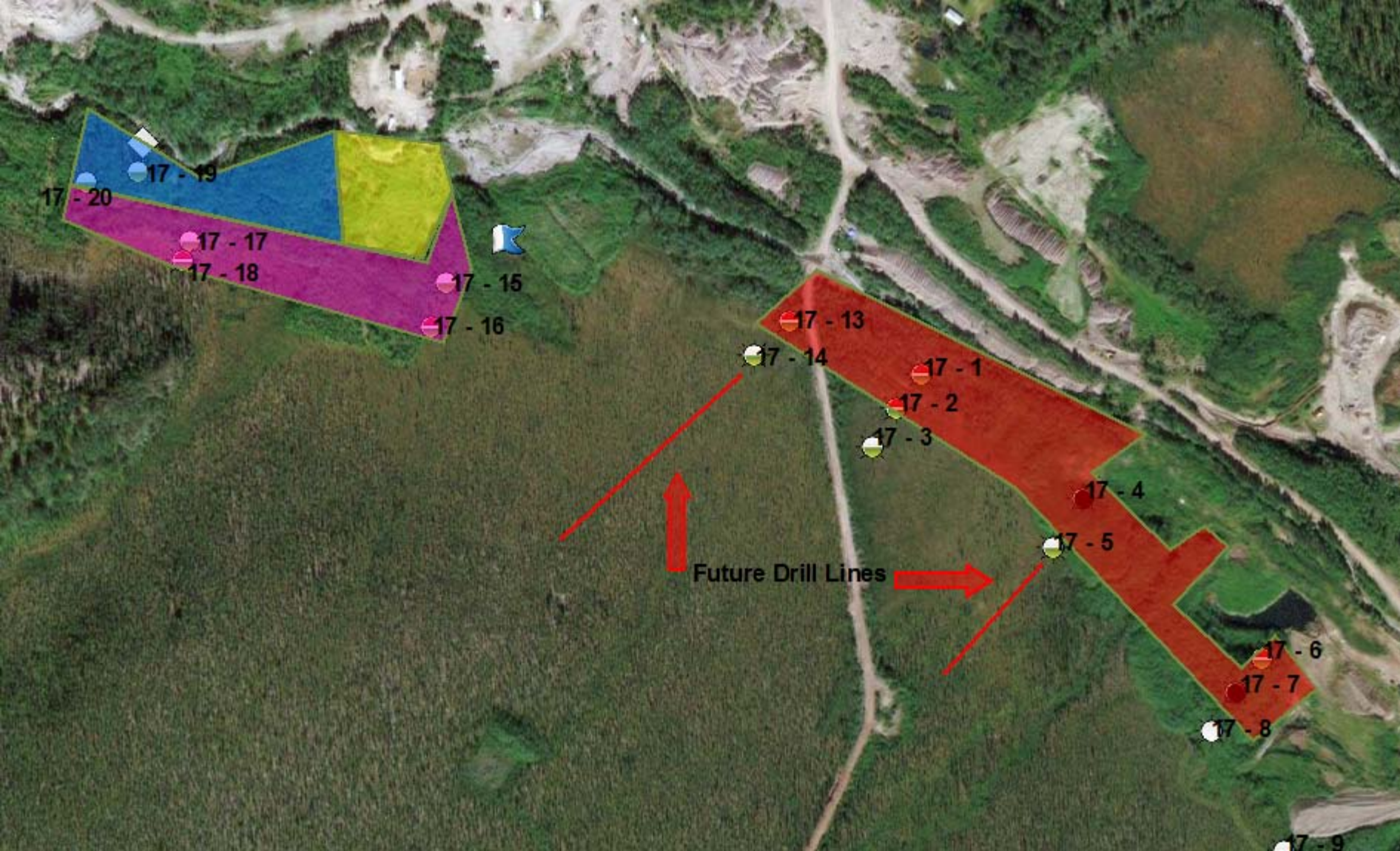
17 - 9

17 - 10

17 - 11

17 - 12

Future Drill Line



17 - 20

17 - 19

17 - 17

17 - 18

17 - 15

17 - 16

17 - 13

17 - 14

17 - 1

17 - 2

17 - 3

17 - 4

17 - 5

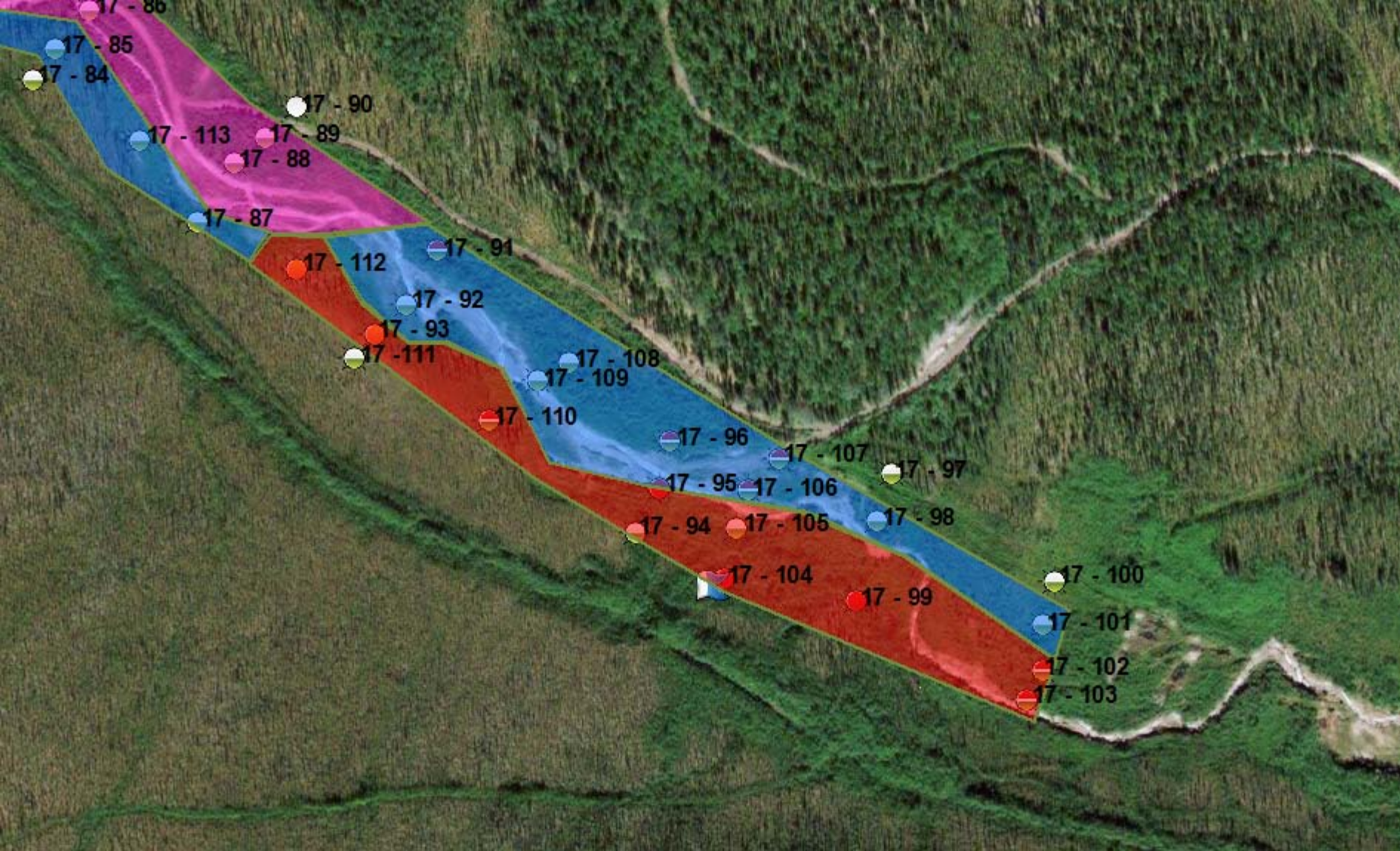
17 - 6

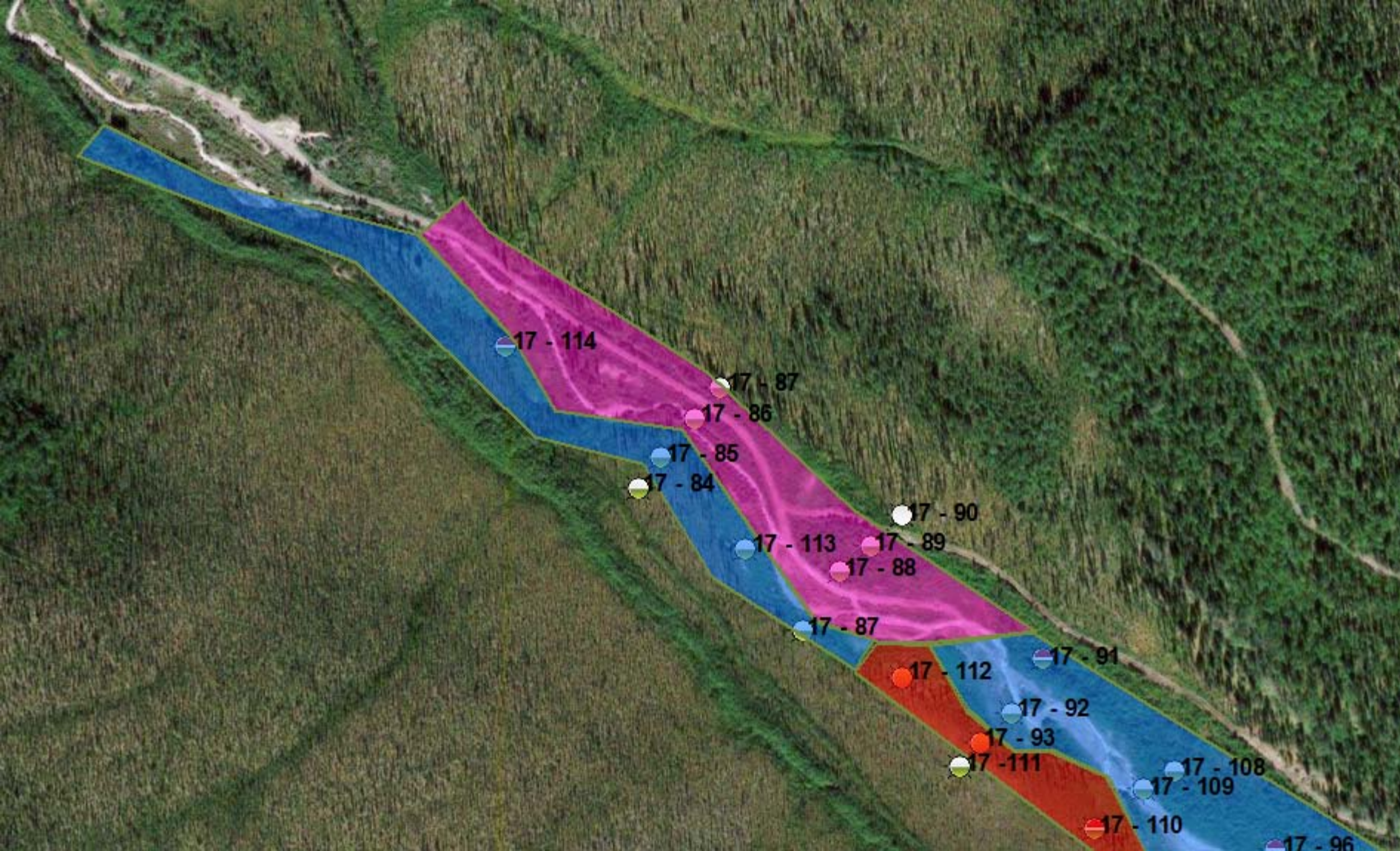
17 - 7

17 - 8

17 - 9

Future Drill Lines





Little Gold Creek Drilling 2017

Drill Hole #	Muck ft	Gravel ft	Bedrock ft	Total Depth	Gold mg	Comments
17 - #83	0 - 12	12 - 17'	17 - 20		20 2 mg	Frozen
17 - #84	0 - 20	20 - 21	21 - 24		24 trace	Frozen
17 - #85	0 - 1	1 - 8'	8 - 14'		14 1 mg	Thawed 50% recovery
17 - #86	0 - 0	0 - 5	5 - 13'		13 3 mg	Thawed
17 - #87	0 - 8	8 - 11'	11 - 17'		17 trace	Frozen
17 - #88	0 - 0	0 - 13	13 - 17		17 trace	Thawed 60% recovery
17 - #89	0 - 5	5 - 11'	11 - 14'		14 trace	Thawed 40% recovery
17 - #90	0 - 12	12 - 15'	15 - 20		20 none	Frozen
17 - #91	0 - 8	8 - 13'	13 - 16		16 6 mg	Thawed 50% recovery
17 - #92	0 - 0	0 - 7	7 - 9'		9 3 mg	Thawed 70% recovery
17 - #93	0 - 9	9 - 15'	15 - 19		19 36 mg	Frozen
17 - #94	0 - 15	15 - 19	19 - 22		22 4 mg	Frozen
17 - #95	0 - 0	0 - 7	7 - 9'		9 17 mg	Thawed 70% recovery
17 - #96	0 - 4	4 - 11'	11 - 14'		14 6 mg	Thawed 60% recovery
17 - #97	0 - 12	12 - 15'	15 - 19		19 trace	Frozen
17 - #98	0 - 0	0 - 11	11 - 14'		14 4 mg	Thawed 40% recovery
17 - #99	0 - 8	8 - 12'	12 - 14'		14 25mg	Frozen
17 - #100	0 - 9	9 - 16'	16 - 19		19 trace	Frozen
17 - #101	0 - 9	9 - 12'	12 - 16'		16 4 mg	Frozen
17 - #102	0 - 5	5 - 11'	11 - 14'		14 11 mg	Frozen
17 - #103	0 - 6	6 - 8'	8 - 14'		14 10 mg	Frozen
17 - #104	0 - 14	14 - 20	20 - 24		24 18 mg	Frozen
17 - #105	0 - 5	5 - 10'	10 - 14'		14 1 mg	Thawed 30% recovery
17 - #106	0 - 0	0 - 8	8 - 11'		11 7 mg	Thawed 70% recovery
17 - #107	0 - 0	0 - 12	12 - 14'		14 6 mg	Thawed 40% recovery
17 - #108	0 - 9	9 - 12'	12 - 15'		15 3 mg	Frozen
17 - #109	0 - 0	0 - 6	6 - 9'		9 4 mg	Thawed 70% recovery
17 - #110	0 - 10	10 - 13'	13 - 16		16 14 mg	Frozen
17 - #111	0 - 10	10 - 17'	17 - 20		20 3 mg	Frozen
17 - #112	0 - 10	10 - 15'	15 - 18		18 36 mg	Frozen
17 - #113	0 - 5	5 - 8'	8 - 12'		12 trace	Thawed 80% recovery
17 - #114	0 - 3	3 - 11'	11 - 14'		14 11 mg	Frozen

Total Depth in feet

505