

FA CLAIMS: PETROGRAPHY

FA2

This rock is a devitrified rhyolite. A few phenocrysts of feldspars are visible: plagioclase and orthoclase. Plagioclase is up to 1mm, anhedral and with very 'ragged' margins; orthoclase (?) to 2mm, is subhedral and often embayed with reaction rims. Quartz is finer grained and angular. The groundmass is now of quartz, muscovite and either biotite or iron-stained smectite. Scarce epidote appears as an alteration product in plagioclase. No sulphides were seen. A few tiny quartz veins cut the rock.

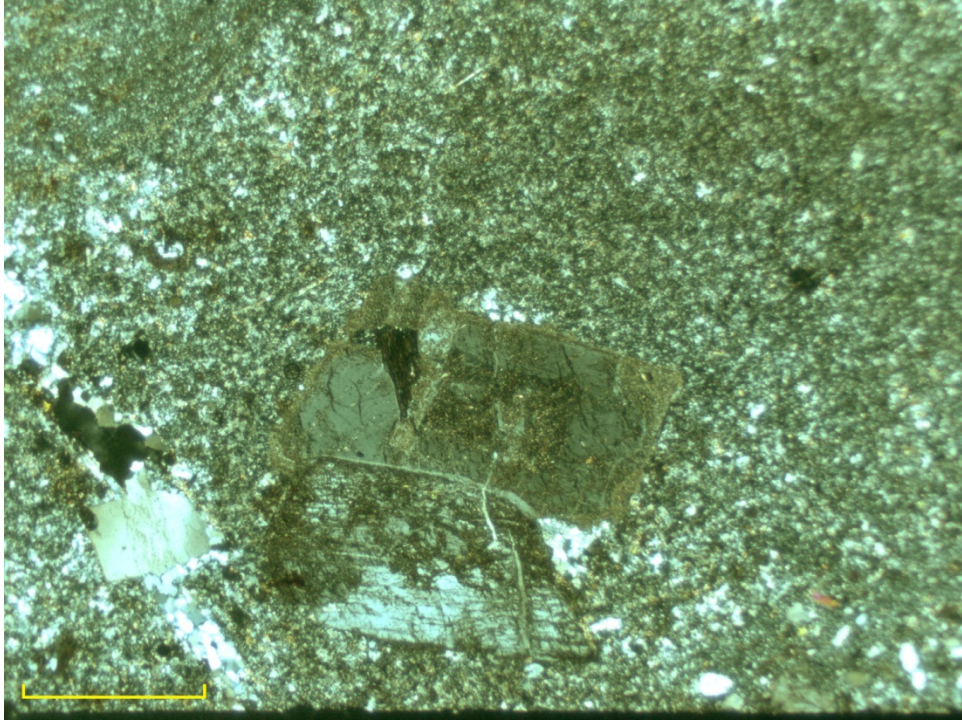
FA2-2,5xp shows a large plagioclase

FA2-5,0xp shows anhedral K-feldspar

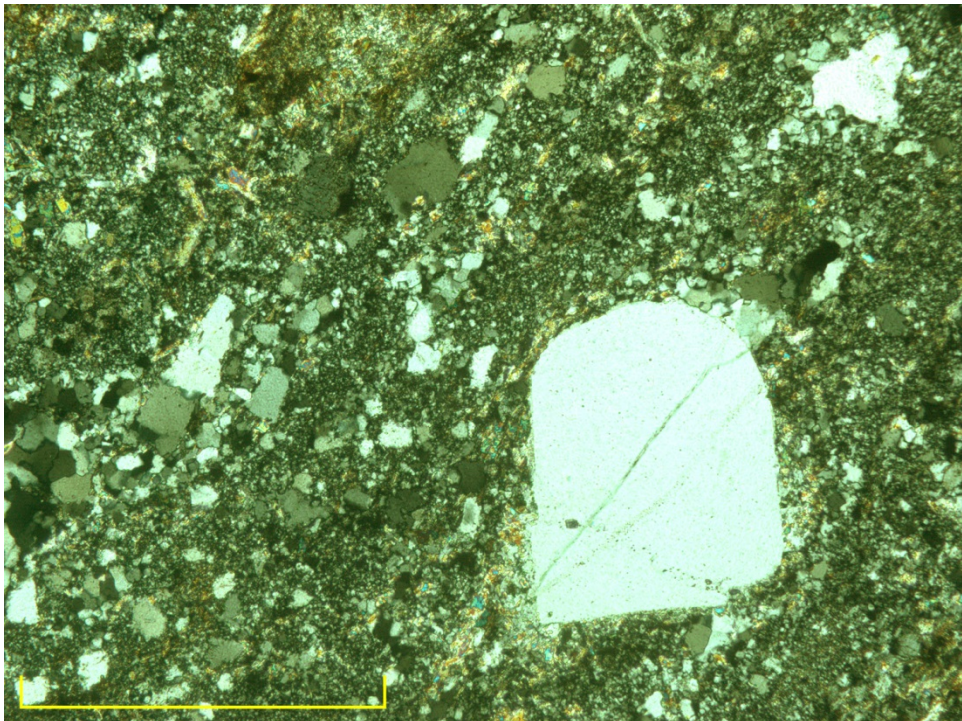
FA2-10xp shows ragged (?) plagioclase

FA2-10xp2 shows K-feldspar with a reaction rim

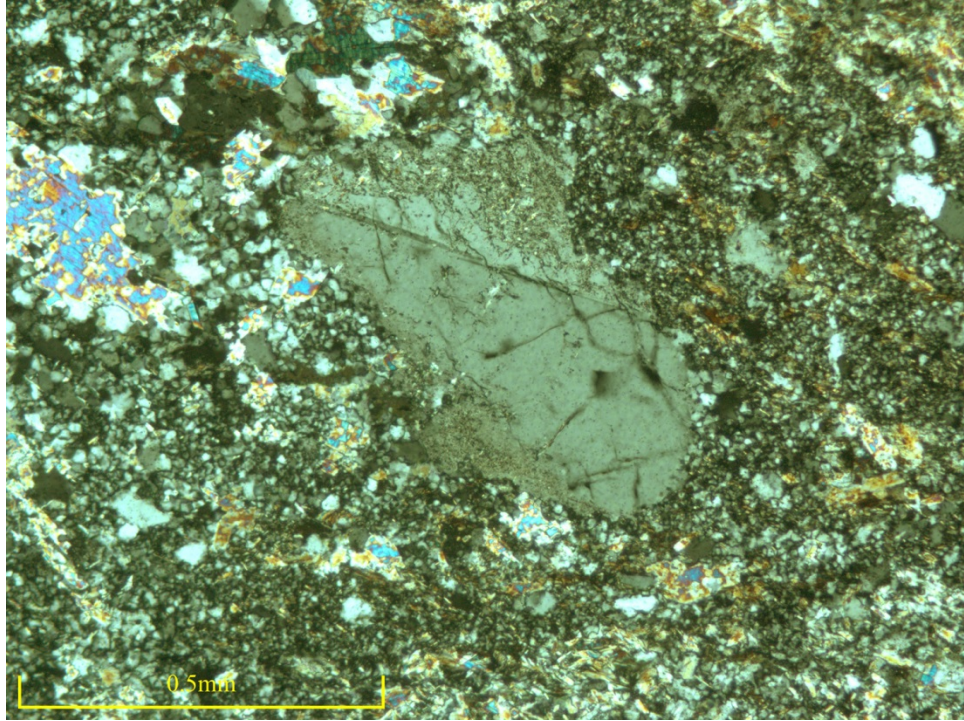
FA2-50pp shows the groundmass



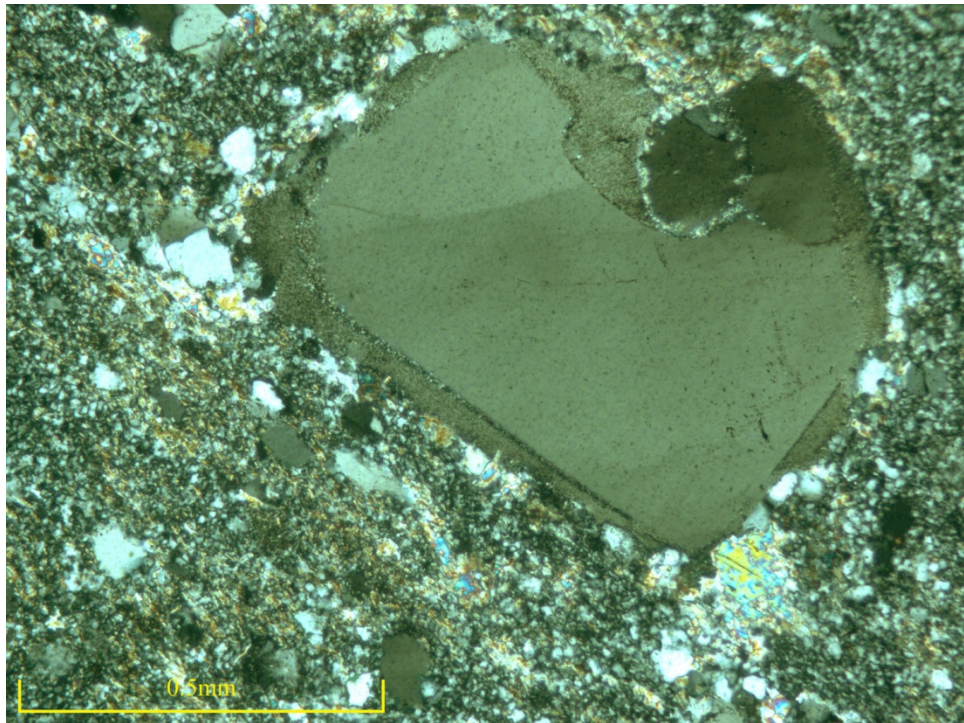
FA2-2,5xp



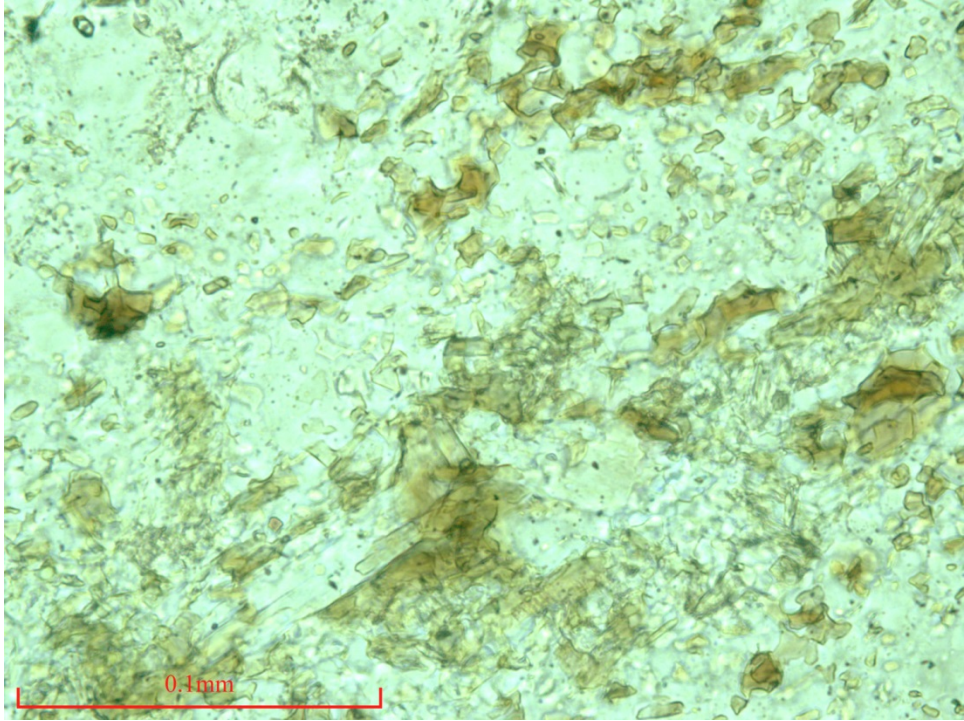
FA2-5,0xp



FA2-10xp



FA2-10xp2



FA2-50pp