

FA4

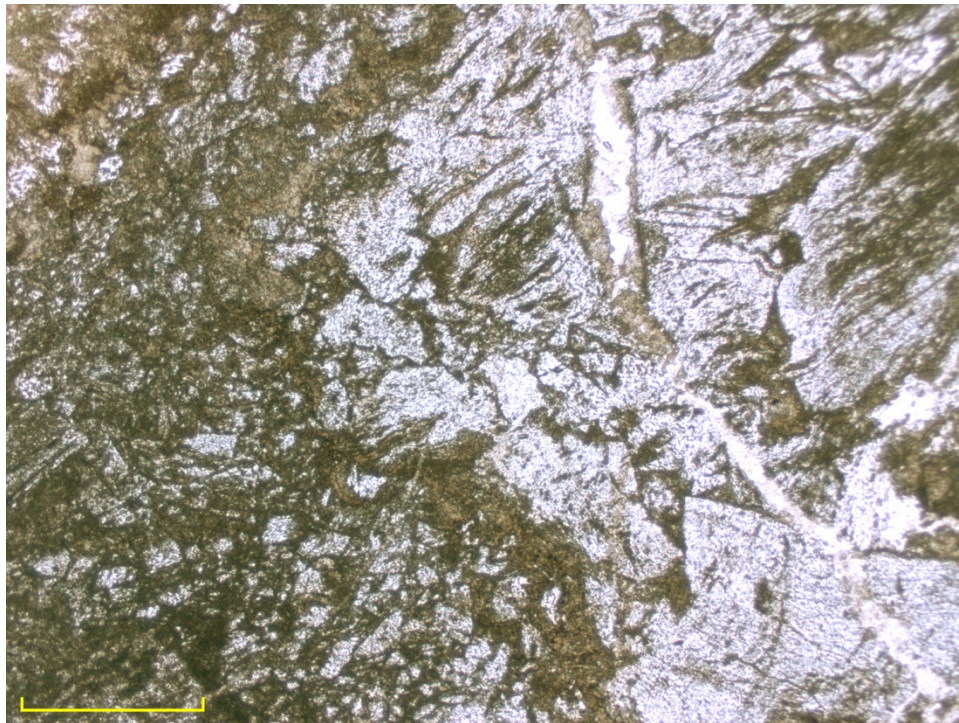
This is a devitrified, welded glassy rhyolitic pyroclastic. No phenocrysts are visible, but many of the clasts show flow-banding. Irregular 0.25mm wide veins cut the rock. These are filled with feldspar and possibly scapolite (if so, likely near the meionite end member). Some larger masses of that mineral are also seen.

FA4-2,5pp shows clasts

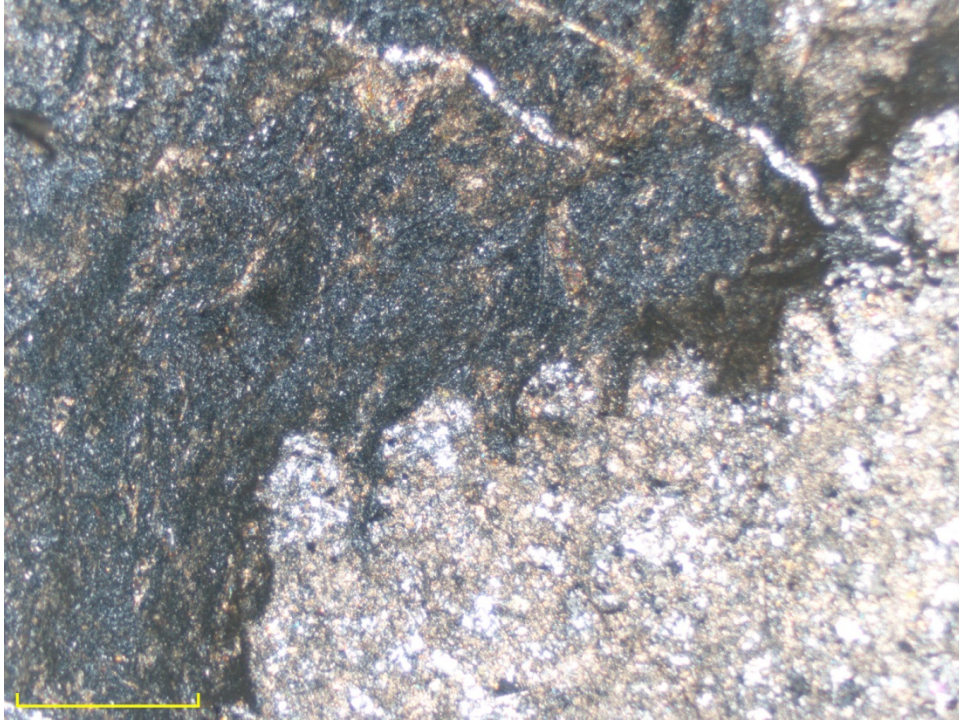
FA4-2,5xp shows the texture of the rock

FA4-5,0xp shows a larger mass of possible scapolite and the flow-banding

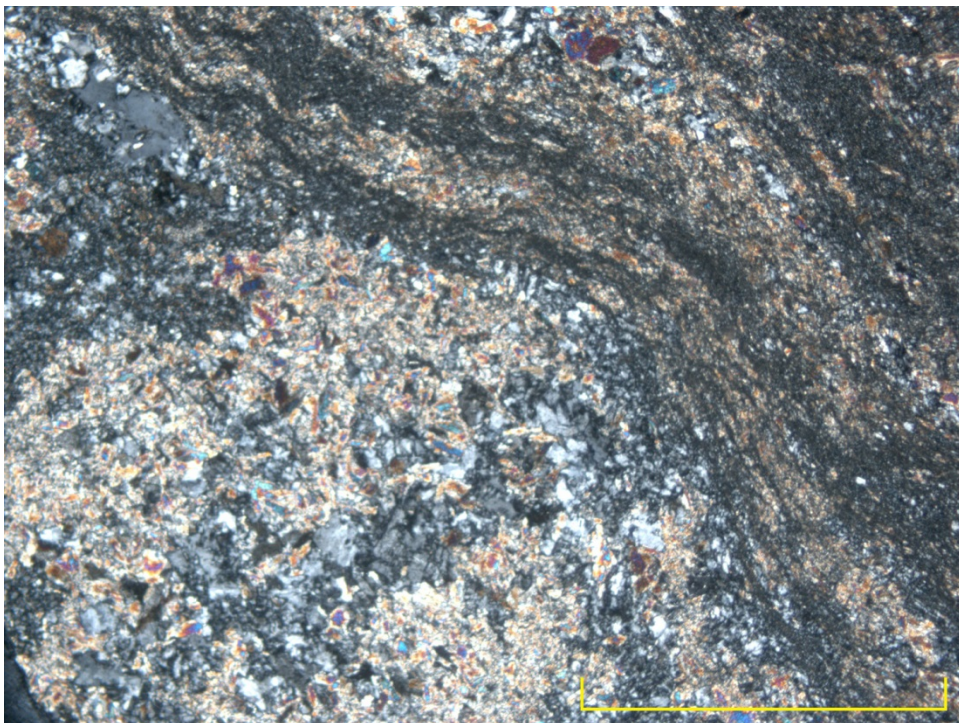
FA4-10xp shows a vein of feldspar and (?) scapolite



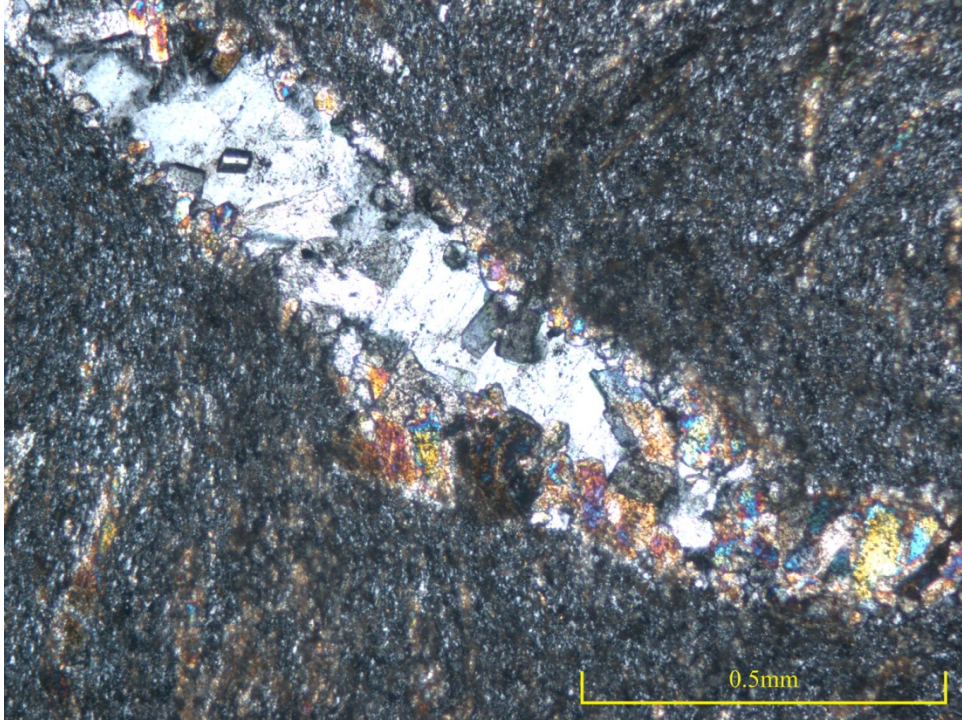
FA4-2,5pp



FA4-2,5xp



FA4-5,0xp



FA4-10xp