

FA5

This is likely a devitrified glass. There is as much to be learned from the slab as from the thin section. The slab shows layering - a central 8mm thick layer of 0.25mm grainsize rock in a more aphanitic pink and green banded material.

It is a quite equigranular (0.1mm typical grainsize) aggregate of anhedral, often angular feldspar and quartz grains in an aphanitic groundmass that contains 0.003mm brown, anhedral minerals. These may be biotite or perhaps iron-stained smectite. Some very irregular veins cut the rock and are likely of smectite and scapolite. No sulphides were noted.

FA5-10xp shows the texture

FA5-20xp shows detail

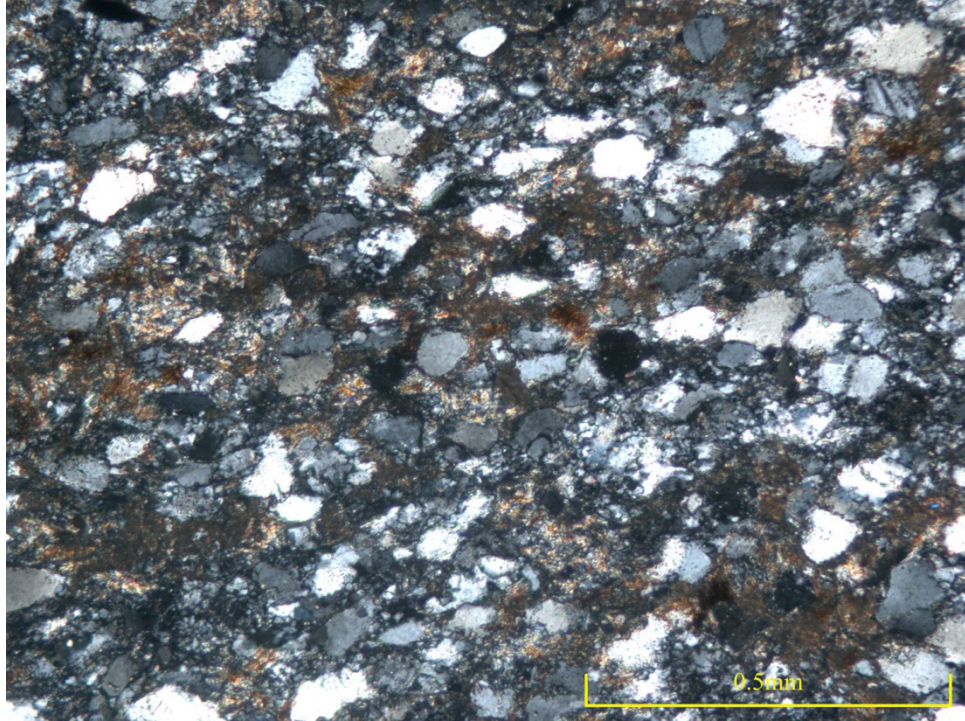
FA5-20pp shows the biotite or smectite

FA5-20xp2 shows the probable smectite and one grain of microcline

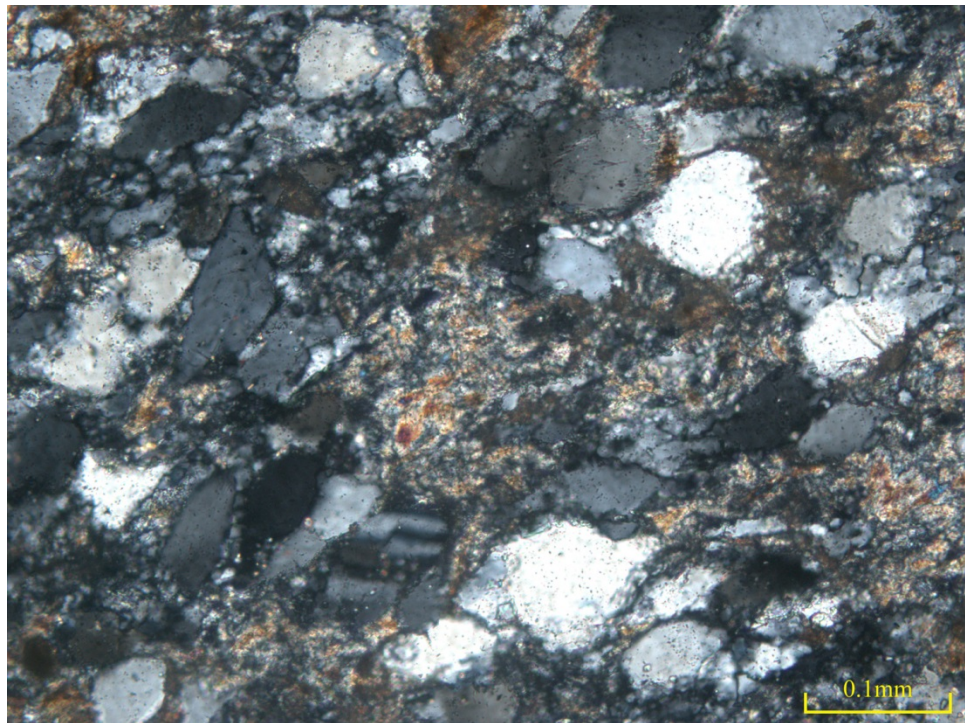
FA5-20pp3 in p.p. light, shows the same field

FA5-10pp2 shows a vein of smectite with possible scapolite

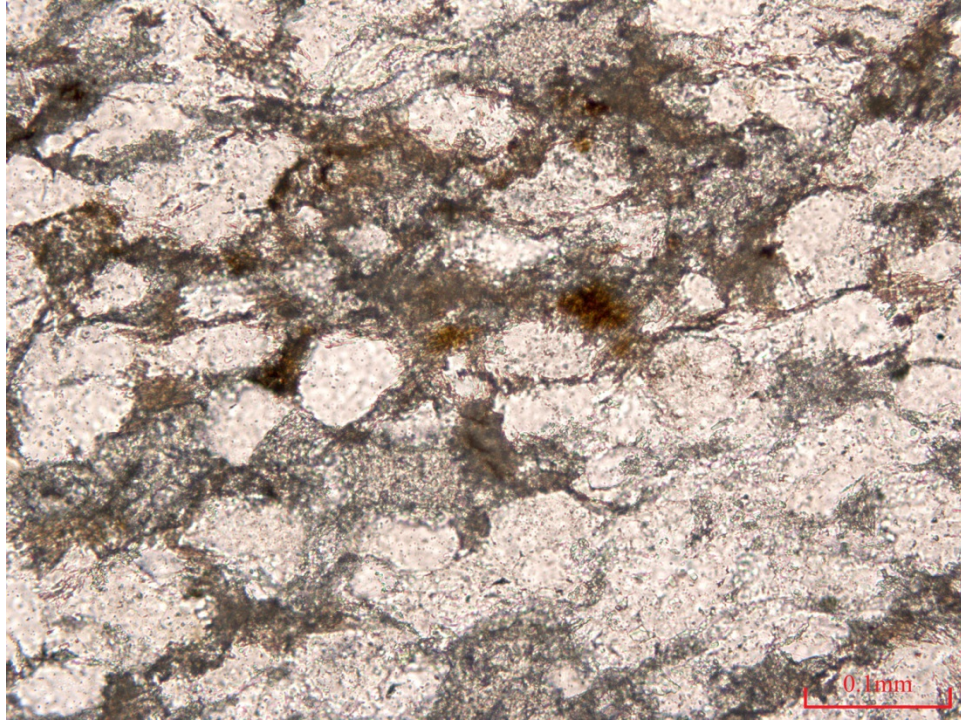
FA5-20pp2 shows vein minerals and apatite crystals in feldspar



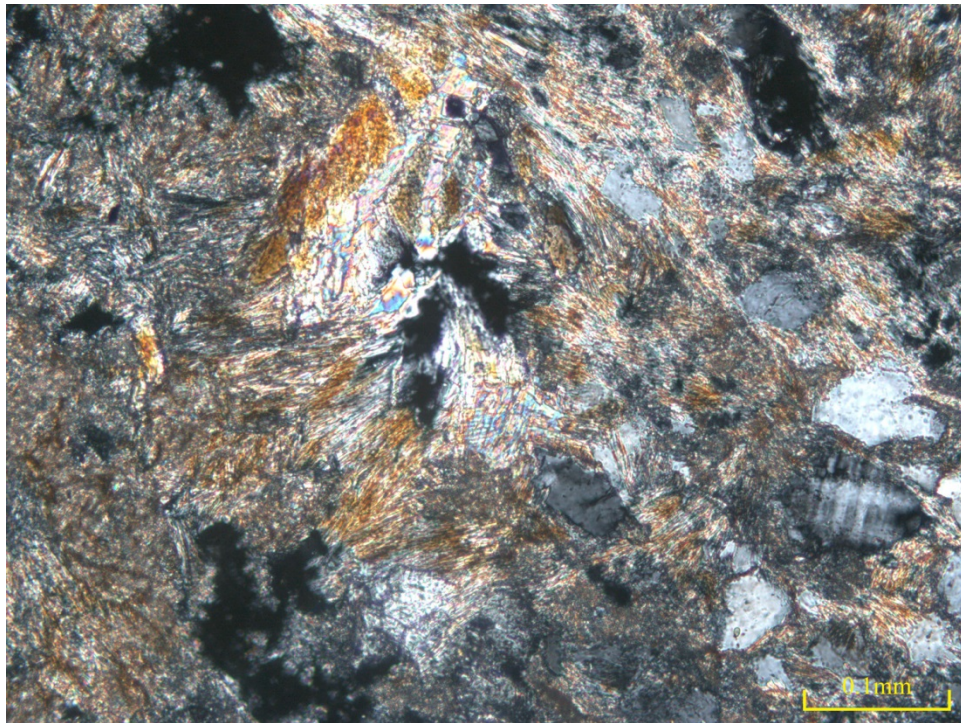
FA5-10xp



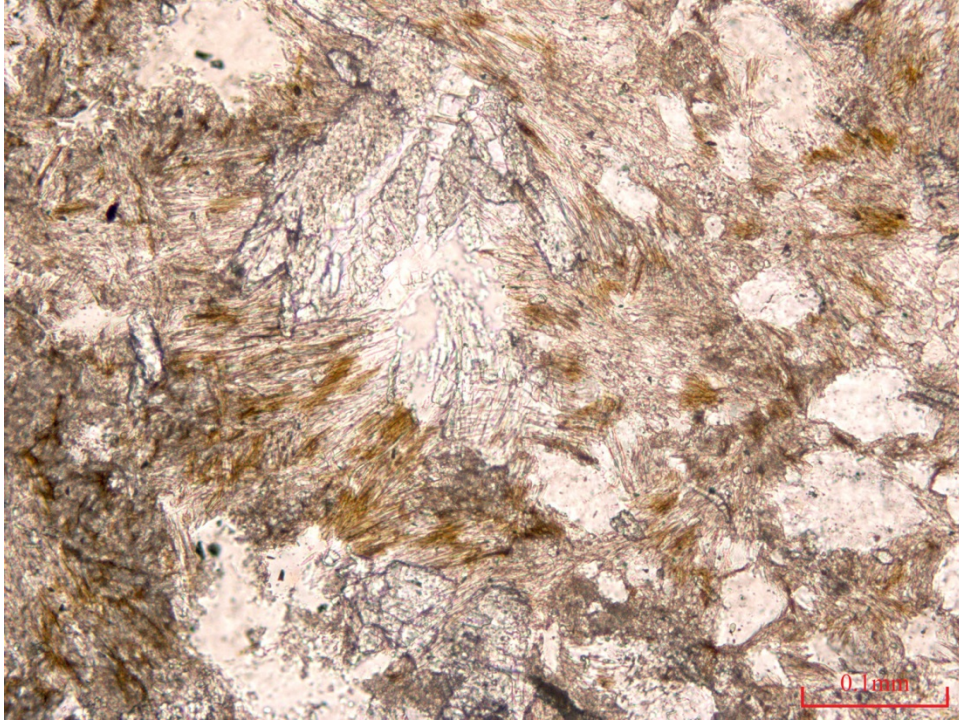
FA5-20xp



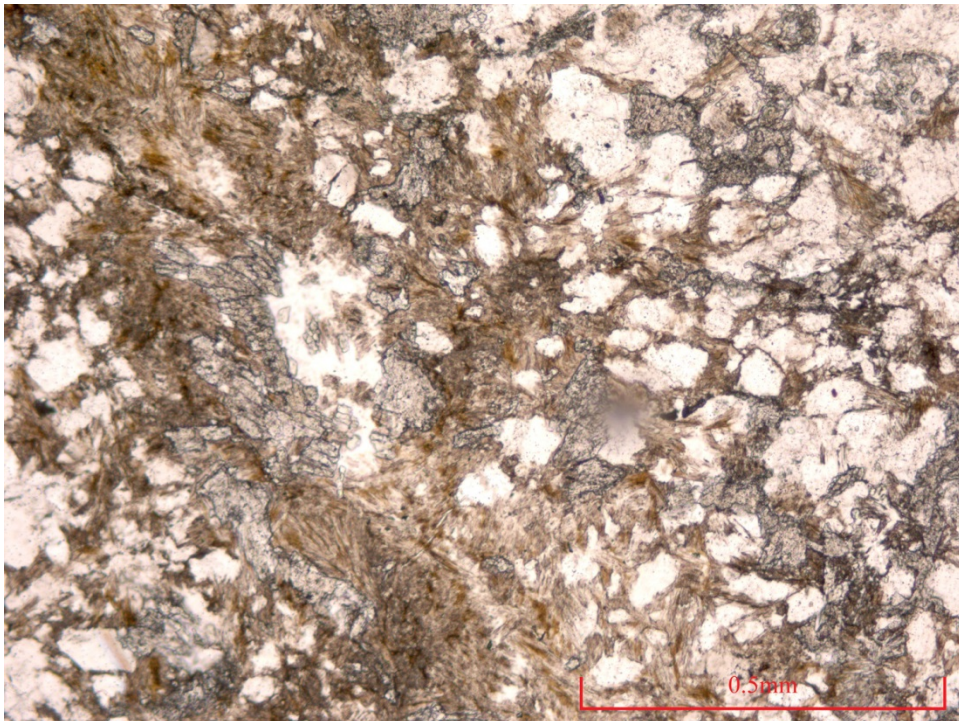
FA5-20pp



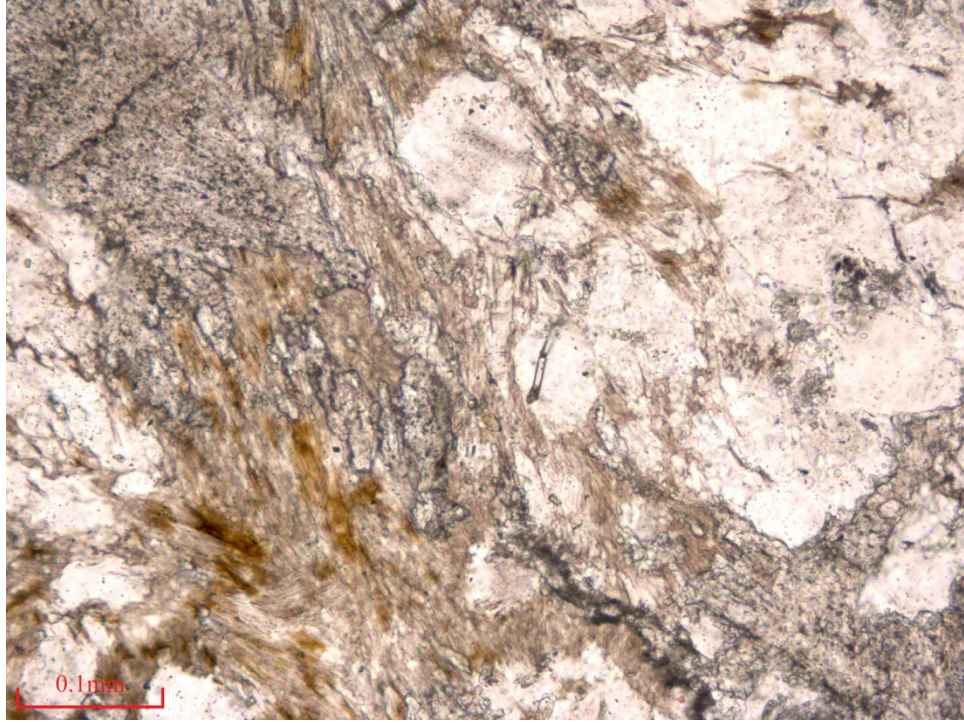
FA5-20xp2



FA5-20pp3



FA5-10pp2



FA5-20pp2