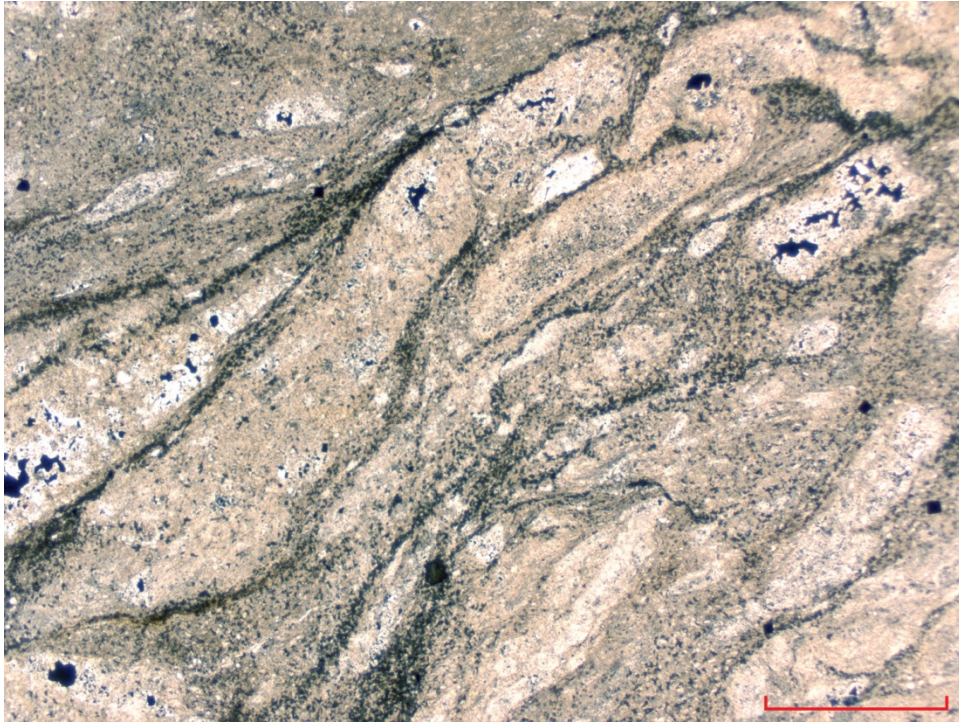


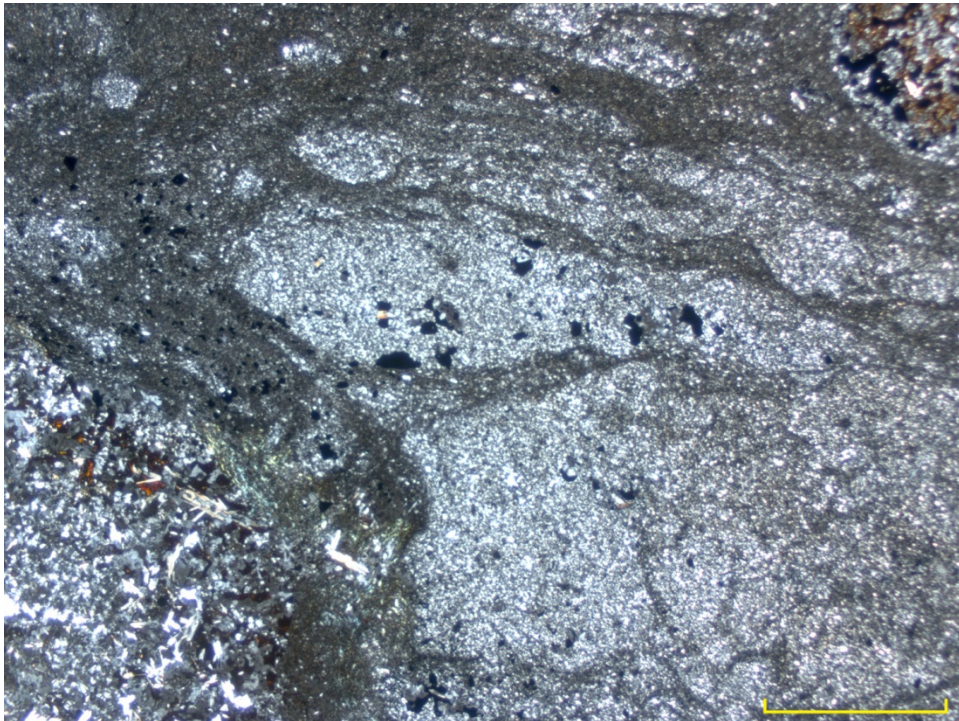
FA8

This rock is a rhyolite, perhaps a perlite. The first photomicrograph shows clasts reminiscent of these fractures. Other clasts in the rock are more equigranular feldspar-quartz-phyllsilicate, some with pyrite mineralization. Pyrrhotite pseudomorphs of pyrite are scarcer. A quartz vein, 0.5mm wide cuts the rock. One 7mm mass of coarse white mica with pyrite is obvious mineralization. Later fractures through the rock are filled with lepidocrocite ('limonite'). It is possible that the mica-pyrrhotite masses are mineralized dissolution vughs.

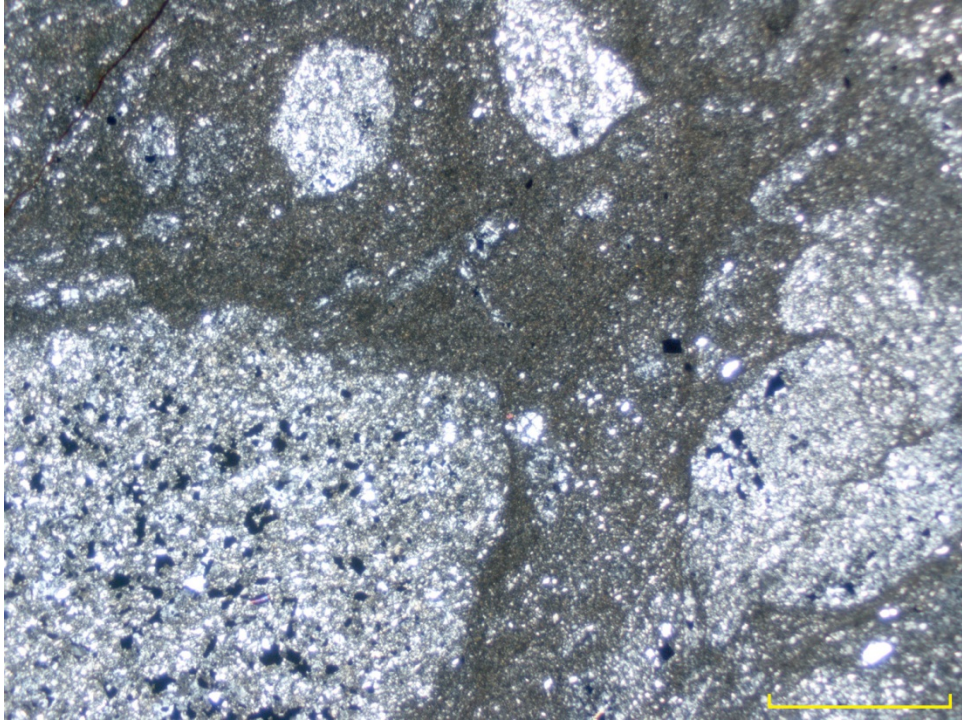
FA8-2,5pp	shows the possible perlitic texture
FA8-2,5xp	gives a different field, with the SW corner showing an agregate of feldspar and pyrrhotite
FA8-2,5xp2	is another view
FA8-2,5ppin	is the same field (reflected light) showing the pyrrhotite
FA8-5,0xp	pyrrhotite in feldspar
FA8-5,0xp2	quartz vein
FA8-10xp	shows coarse white mica and pyrrhotite
FA8-10ppin	is the same field in reflected light. The lighter grey is lepidocrocite.



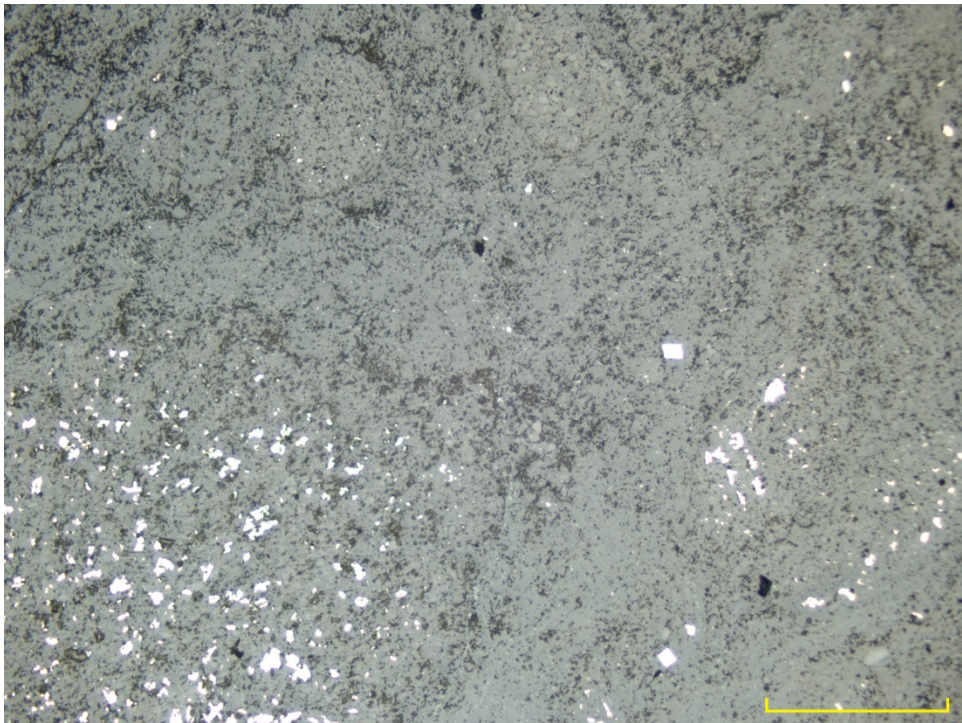
FA8-2,5pp



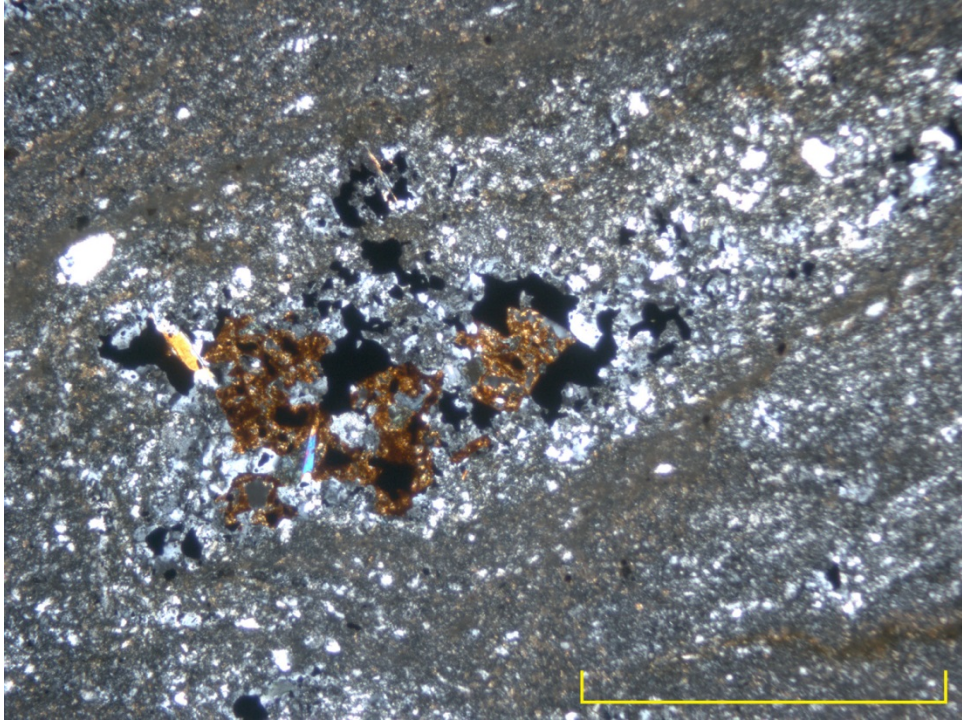
FA8-2,5xp



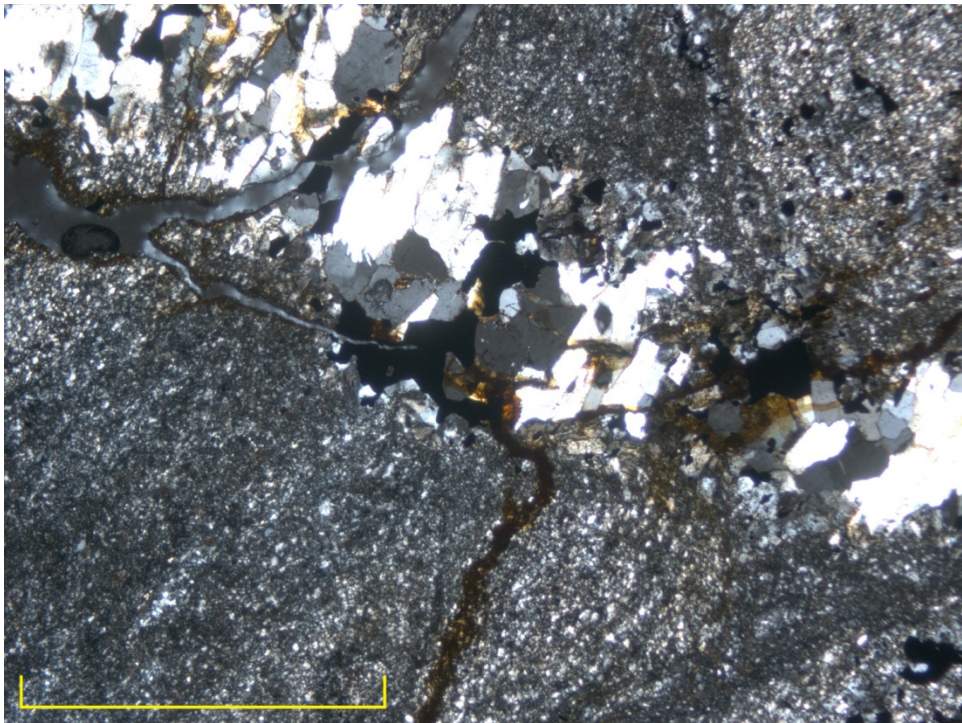
FA8-2,5xp2



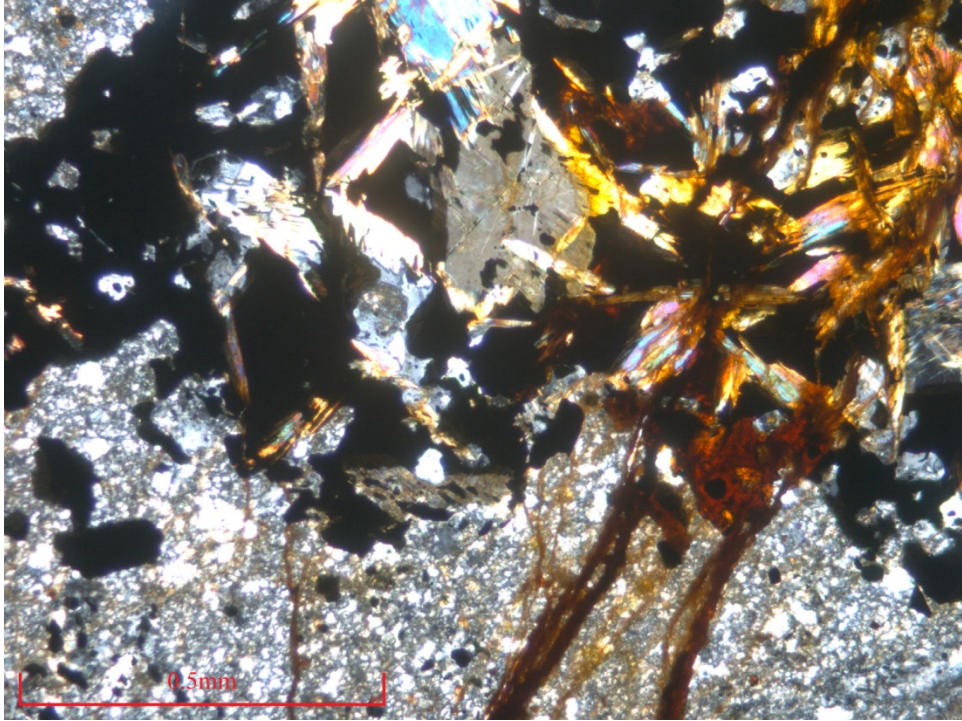
FA8-2,5ppin



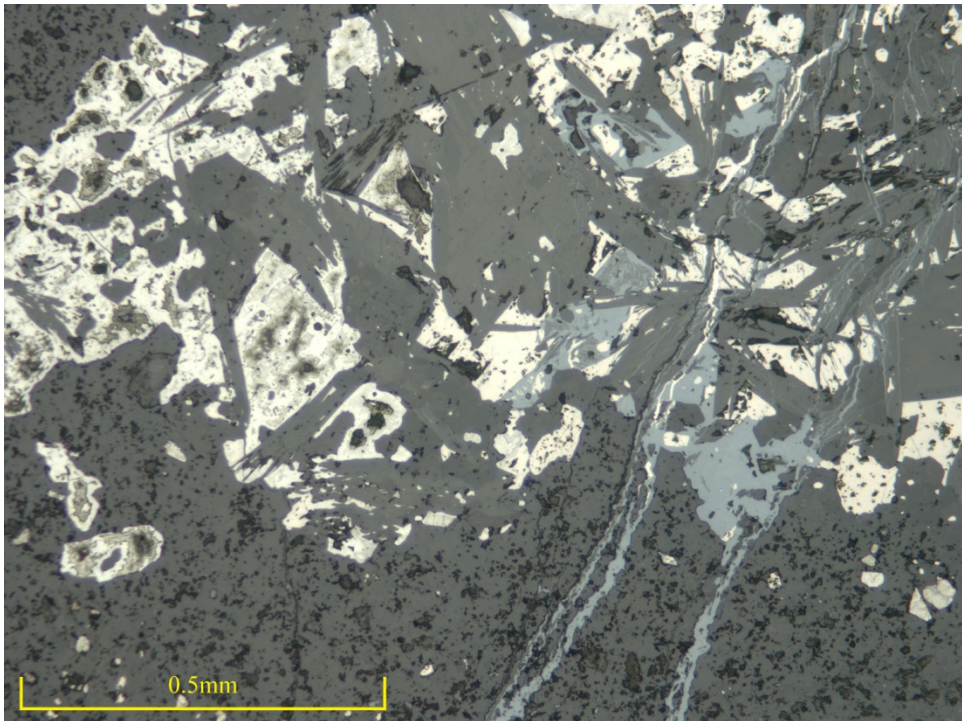
FA8-5,0xp



FA8-5,0xp2



FA8-10xp



FA8-10ppin