

YMEP Final Submission Form



		Date submitted: January 31, 2019													
Submit by January 31 st to: (winter placer projects may submit at pre-approved date)		YMEP - EMR/YG Street address: 102-300 Main Street Mailing address: Box 2703, K-102 Whitehorse, YT, Y1A 2B5													
		ymep@gov.yk.ca phone: 867-456-3828 fax: 867-667-3198													
CONTACT INFO		PROJECT INFO													
Name:	Helena Kuikka	YMEP no:	18-016												
Address:	1000-1050 W. Pender St	Project name:	No Name (Hawk)												
	Vancouver BC V6E 3S7	Project type:	Hard Rock												
Email:	hkuikka@vitgoldcorp.com	Project module:	Target Evaluation												
Phone:	604-696-6611														
Is the final report enclosed? <table style="display: inline-table; margin-left: 20px;"> <tr> <td><input checked="" type="checkbox"/></td> <td>yes</td> <td><input checked="" type="checkbox"/></td> <td>hard copy</td> </tr> <tr> <td><input type="checkbox"/></td> <td>no</td> <td><input checked="" type="checkbox"/></td> <td>pdf copy</td> </tr> <tr> <td></td> <td></td> <td><input checked="" type="checkbox"/></td> <td>digital spreadsheet of station location data</td> </tr> </table>				<input checked="" type="checkbox"/>	yes	<input checked="" type="checkbox"/>	hard copy	<input type="checkbox"/>	no	<input checked="" type="checkbox"/>	pdf copy			<input checked="" type="checkbox"/>	digital spreadsheet of station location data
<input checked="" type="checkbox"/>	yes	<input checked="" type="checkbox"/>	hard copy												
<input type="checkbox"/>	no	<input checked="" type="checkbox"/>	pdf copy												
		<input checked="" type="checkbox"/>	digital spreadsheet of station location data												
Comment:															
PROJECT SUMMARY															
Total project expenditures:	280,750.95														
Number of new claims since March 31 st :	833														
Has an option resulted since March 31 st ?	<input type="checkbox"/> yes	<input checked="" type="checkbox"/> no	<input type="checkbox"/> in negotiation												
Number of calendar field days:	13														
Number of person-days of employment:	77 paid	_____ days of unpaid work													
Total no. of samples: <u>20</u> rocks	silts	2,033	soils _____ other												
Total length/volume of trenching/shafting:	n/a														
Total number of line-km of geophysics:	n/a														
Total metres drilled:	<u>0</u> diamond drill	<u>0</u> RC drill	<u>0</u> auger/percussion drill												
Other products (provide details):															
<i>This is not an expense claim form. To request reimbursement of expenses, please submit a separate detailed expense claim form.</i>															
FINANCIAL SUMMARY															
Total daily field allowance:	<u>9,100</u>	Total contractor costs:	<u>36,588.15</u>												
Total field air transportation costs (helicopter/plane):	<u>112,390.53</u>	Total excavating/heavy equipment costs:	<u>0</u>												
Total truck/mileage costs:	<u>2,275</u>	Total assay/analyses costs:	<u>29,490.42</u>												
Total wages paid:	<u>4,200</u>	Total reclamation costs:	<u>0</u>												
Total light equipment rental costs:	_____	Total report writing cost:	_____												
Other (please specify): _____		Total staking costs:	<u>99,960</u>												
Other (please specify): _____															

YMEP Final Submission Form



Your feedback on any aspect of the program:

The Department of Energy, Mines and Resources may verify all statements related to, and made on this form, in any previously submitted reports, interim claims and in the Summary or Technical Report which accompanies it.

I certify that;

1. I am the person, or the representative of the company or partnership, named in the Application for Funding and in the Contribution Agreement under the Yukon Mineral Exploration Program.
2. I am a person who is nineteen years of age or older, and I have complied with all the requirements of the said program.
3. I hereby apply for the final payment of a contribution under the Yukon Mineral Exploration Program (YMEP) and declare the information contained within the Summary or Technical Report and this form to be true and accurate.

Date January 31, 2019

Signature of Applicant *Helena Kuikka*

Name (print) Helena Kuikka

YMEP Expense Claim Form - Client Copy



YMEP no: 18-016	project name: No Name	applicant name: StrataGold Corp.		
expense claim no:	program type: hard rock	program module: target evaluation		
date submitted: 31-Jan-19	phone: 6046966611	email: hkuikka@vitgoldcorp.com		
address: Suite 1000-1050 W. Pender St. Vancouver BC V6E 3S7				
start/end dates of fieldwork for this claim:	11-Aug-18 <small>start</small>	23-Aug-18 <small>end</small>		
		no. of field days/this claim: 13		
eligible expenses <i>Please refer to rate guidelines. Provide photocopy of receipts.</i>				
item	unit/days	rate	total	
daily field expenses	no persons: 7	13 \$100/day	\$9,100.00	
personnel	<i>Name (supply statement of qualifications)</i>			
	Helena Kuikka/A.Wolter/S.Wozniak/other Geos	12	350	
	Pika Soil Sample Crew	65	275	
equipment (rental)	private or commercial	unit/days	rate	total
Truck	private	13	175	\$2,275.00
Sat Phone	private	13	20	\$260.00
	private			
	private			
	private			
	private			
	private			
	private			
	private			
	private			
other	<i>Please provide details.</i>			
Staking Costs- Pika		833 claims	\$120/claim	\$99,960.00
Helicopter- Staking		42 hours + fuel	\$1,350/hr dry	\$64,474.20
Helicopter- Exploration		31.3 hours + fuel	\$1,350/hr dry	\$47,916.33
Assay Costs- Soil		2,033 samples	\$14.34/sample	\$29,153.22
Assay Costs- Rock Chip		20 samples	\$16.86/sample	\$337.20
Total this claim:				\$275,550.95

STRATAGOLD CORP.

**YUKON MINERAL EXPLORATION PROGRAM (YMEP) REPORT FOR THE
STAKING AND THE TARGET EVALUATION PROGRAM ON THE NO NAME
(HAWK) TARGET AREA, YUKON**

Located in the Mayo Mining District
7129516N, 467100E (NAD 83, UTM Zone 8N)
NTS Map: 106D05
Yukon Territory

Prepared for:
StrataGold Corporation
Suite 1000 - 1050 West Pender Street
Vancouver, BC
Canada V6E 3S7

Prepared by:
Paul D. Gray, P. Geo, V.P. Exploration, Victoria Gold Corp.
Helena Kuikka, P. Geo, Project Geologist, Victoria Gold Corp.
Steven Wozniak, Geology, Victoria Gold Corp.

January 2019



Table of Contents

A.	Project Location	3
i)	Name of area.....	3
ii)	Project location identification.....	3
iii)	Project Location	3
i)	Claims.....	3
B.	Access.....	24
C.	Target Area.....	24
i)	Property History	24
ii)	Regional Geology	25
iii)	Property Geology	26
iv)	Deposit Type and Mineralization	28
D.	Target Rationale.....	29
E.	2018 Exploration Program	30
F.	Conclusion and Recommendations	47
G.	Exploration Program Expenditures	48
H.	Project Partnerships.....	49
I.	References	49
J.	Statement Of Qualifications.....	51

Appendix I- Soil Certificates

Appendix II- Soil and Rock Data

Appendix III- Maps

Appendix IV- Invoices

A. Project Location

i) Name of area

The No Name (Hawk) prospect is located in the Mayo Mining District, Central Yukon.

ii) Project location identification

Located south of the Beaver River, 30km north of Dublin Gulch, NTS map 106D05 (Figure 1).

iii) Project Location

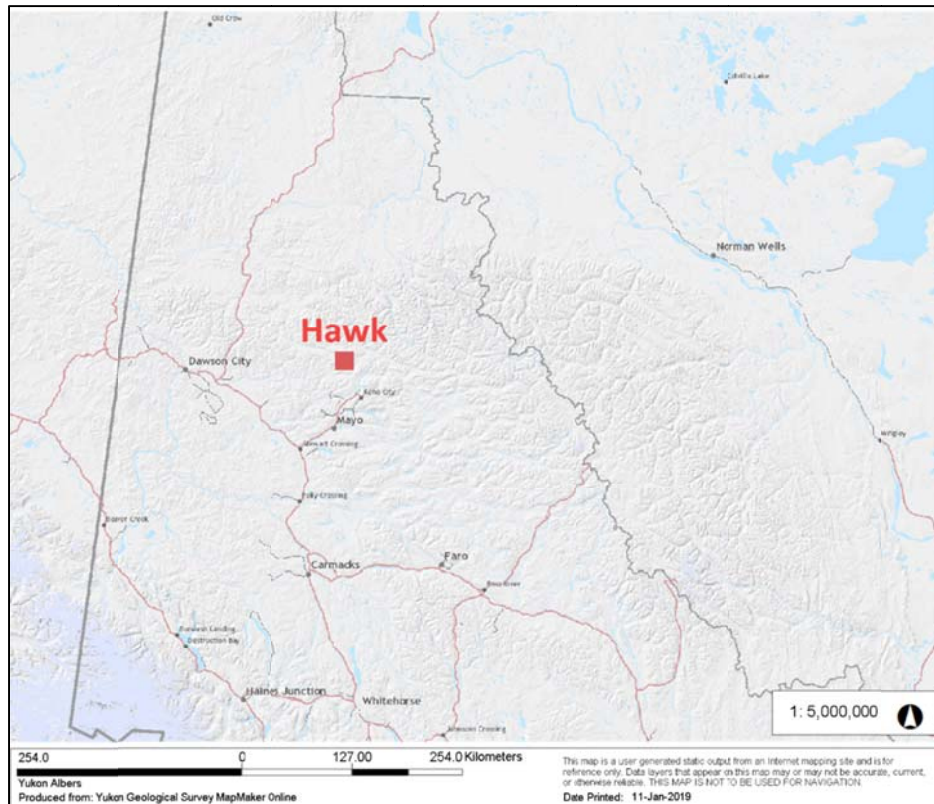


Figure 1: Hawk Location Map from YGS Mapmaker.

i) Claims

The Hawk project consists of 833 claims covering 172km² located approximately 30km north of the Dublin Gulch claim block (Table 1). The claims were staked in May 2018 and recorded in the name of StrataGold Corporation (Figure 2). The area has no other current or recently lapsed claims nearby and is situated south of the Wernecke Mountains on Crown land, east of the areas withdrawn from staking.

NO NAME YMEP REPORT 2019

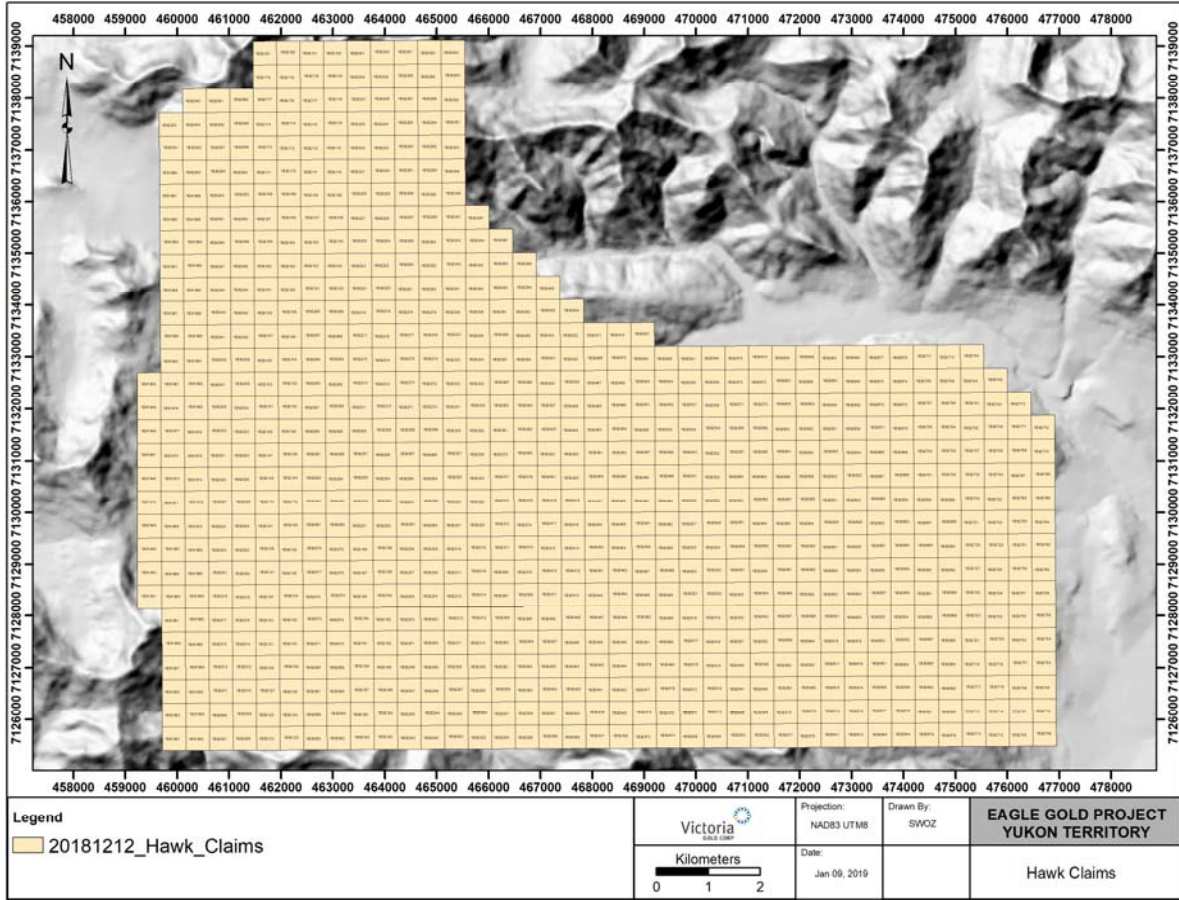


Figure 2- Location of the Hawk claims.

Table 1: Claims List

GRANT NUMBER	REGULATION TYPE	LABEL	CLAIM NUMBER	CLAIM OWNER	EXPIRY DATE
YE91941	Quartz	Dace 1	1	STRATAGOLD CORPORATION - 100%	2019-05-24
YE91942	Quartz	Dace 2	2	STRATAGOLD CORPORATION - 100%	2019-05-24
YE91943	Quartz	Dace 3	3	STRATAGOLD CORPORATION - 100%	2019-05-24
YE91944	Quartz	Dace 4	4	STRATAGOLD CORPORATION - 100%	2019-05-24
YE91945	Quartz	Dace 5	5	STRATAGOLD CORPORATION - 100%	2019-05-24
YE91946	Quartz	Dace 6	6	STRATAGOLD CORPORATION - 100%	2019-05-24
YE91947	Quartz	Dace 7	7	STRATAGOLD CORPORATION - 100%	2019-05-24
YE91948	Quartz	Dace 8	8	STRATAGOLD CORPORATION - 100%	2019-05-24
YE91949	Quartz	Dace 9	9	STRATAGOLD CORPORATION - 100%	2019-05-24
YE91950	Quartz	Dace 10	10	STRATAGOLD CORPORATION - 100%	2019-05-24
YE91951	Quartz	Dace 11	11	STRATAGOLD CORPORATION - 100%	2019-05-24
YE91952	Quartz	Dace 12	12	STRATAGOLD CORPORATION - 100%	2019-05-24
YE91953	Quartz	Dace 13	13	STRATAGOLD CORPORATION - 100%	2019-05-24

NO NAME YMEP REPORT 2019

YE91954	Quartz	Dace 14	14	STRATAGOLD CORPORATION - 100%	2019-05-24
YE91955	Quartz	Dace 15	15	STRATAGOLD CORPORATION - 100%	2019-05-24
YE91956	Quartz	Dace 16	16	STRATAGOLD CORPORATION - 100%	2019-05-24
YE91957	Quartz	Dace 17	17	STRATAGOLD CORPORATION - 100%	2019-05-24
YE91958	Quartz	Dace 18	18	STRATAGOLD CORPORATION - 100%	2019-05-24
YE91959	Quartz	Dace 19	19	STRATAGOLD CORPORATION - 100%	2019-05-24
YE91960	Quartz	Dace 20	20	STRATAGOLD CORPORATION - 100%	2019-05-24
YE91961	Quartz	Dace 21	21	STRATAGOLD CORPORATION - 100%	2019-05-24
YE91962	Quartz	Dace 22	22	STRATAGOLD CORPORATION - 100%	2019-05-24
YE91963	Quartz	Dace 23	23	STRATAGOLD CORPORATION - 100%	2019-05-24
YE91964	Quartz	Dace 24	24	STRATAGOLD CORPORATION - 100%	2019-05-24
YE91965	Quartz	Dace 25	25	STRATAGOLD CORPORATION - 100%	2019-05-24
YE91966	Quartz	Dace 26	26	STRATAGOLD CORPORATION - 100%	2019-05-24
YE91967	Quartz	Dace 27	27	STRATAGOLD CORPORATION - 100%	2019-05-24
YE91968	Quartz	Dace 28	28	STRATAGOLD CORPORATION - 100%	2019-05-24
YE91969	Quartz	Dace 29	29	STRATAGOLD CORPORATION - 100%	2019-05-24
YE91970	Quartz	Dace 30	30	STRATAGOLD CORPORATION - 100%	2019-05-24
YE91971	Quartz	Dace 31	31	STRATAGOLD CORPORATION - 100%	2019-05-24
YE91972	Quartz	Dace 32	32	STRATAGOLD CORPORATION - 100%	2019-05-24
YE91973	Quartz	Dace 33	33	STRATAGOLD CORPORATION - 100%	2019-05-24
YE91974	Quartz	Dace 34	34	STRATAGOLD CORPORATION - 100%	2019-05-24
YE91975	Quartz	Dace 35	35	STRATAGOLD CORPORATION - 100%	2019-05-24
YE91976	Quartz	Dace 36	36	STRATAGOLD CORPORATION - 100%	2019-05-24
YE91977	Quartz	Dace 37	37	STRATAGOLD CORPORATION - 100%	2019-05-24
YE91978	Quartz	Dace 38	38	STRATAGOLD CORPORATION - 100%	2019-05-24
YE91979	Quartz	Dace 39	39	STRATAGOLD CORPORATION - 100%	2019-05-24
YE91980	Quartz	Dace 40	40	STRATAGOLD CORPORATION - 100%	2019-05-24
YE91981	Quartz	Dace 41	41	STRATAGOLD CORPORATION - 100%	2019-05-24
YE91982	Quartz	Dace 42	42	STRATAGOLD CORPORATION - 100%	2019-05-24
YE91983	Quartz	Dace 43	43	STRATAGOLD CORPORATION - 100%	2019-05-24
YE91984	Quartz	Dace 44	44	STRATAGOLD CORPORATION - 100%	2019-05-24
YE91985	Quartz	Dace 45	45	STRATAGOLD CORPORATION - 100%	2019-05-24
YE91986	Quartz	Dace 46	46	STRATAGOLD CORPORATION - 100%	2019-05-24
YE91987	Quartz	Dace 47	47	STRATAGOLD CORPORATION - 100%	2019-05-24
YE91988	Quartz	Dace 48	48	STRATAGOLD CORPORATION - 100%	2019-05-24
YE91989	Quartz	Dace 49	49	STRATAGOLD CORPORATION - 100%	2019-05-24
YE91990	Quartz	Dace 50	50	STRATAGOLD CORPORATION - 100%	2019-05-24
YE91991	Quartz	Dace 51	51	STRATAGOLD CORPORATION - 100%	2019-05-24
YE91992	Quartz	Dace 52	52	STRATAGOLD CORPORATION - 100%	2019-05-24
YE91993	Quartz	Dace 53	53	STRATAGOLD CORPORATION - 100%	2019-05-24
YE91994	Quartz	Dace 54	54	STRATAGOLD CORPORATION - 100%	2019-05-24
YE91995	Quartz	Dace 55	55	STRATAGOLD CORPORATION - 100%	2019-05-24
YE91996	Quartz	Dace 56	56	STRATAGOLD CORPORATION - 100%	2019-05-24

NO NAME YMEP REPORT 2019

YE91997	Quartz	Dace 57	57	STRATAGOLD CORPORATION - 100%	2019-05-24
YE91998	Quartz	Dace 58	58	STRATAGOLD CORPORATION - 100%	2019-05-24
YE91999	Quartz	Dace 59	59	STRATAGOLD CORPORATION - 100%	2019-05-24
YE92000	Quartz	Dace 60	60	STRATAGOLD CORPORATION - 100%	2019-05-24
YE92001	Quartz	Dace 61	61	STRATAGOLD CORPORATION - 100%	2019-05-24
YE92002	Quartz	Dace 62	62	STRATAGOLD CORPORATION - 100%	2019-05-24
YE92003	Quartz	Dace 63	63	STRATAGOLD CORPORATION - 100%	2019-05-24
YE92004	Quartz	Dace 64	64	STRATAGOLD CORPORATION - 100%	2019-05-24
YE92005	Quartz	Dace 65	65	STRATAGOLD CORPORATION - 100%	2019-05-24
YE92006	Quartz	Dace 66	66	STRATAGOLD CORPORATION - 100%	2019-05-24
YE92007	Quartz	Dace 67	67	STRATAGOLD CORPORATION - 100%	2019-05-24
YE92008	Quartz	Dace 68	68	STRATAGOLD CORPORATION - 100%	2019-05-24
YE92009	Quartz	Dace 69	69	STRATAGOLD CORPORATION - 100%	2019-05-24
YE92010	Quartz	Dace 70	70	STRATAGOLD CORPORATION - 100%	2019-05-24
YE92011	Quartz	Dace 71	71	STRATAGOLD CORPORATION - 100%	2019-05-24
YE92012	Quartz	Dace 72	72	STRATAGOLD CORPORATION - 100%	2019-05-24
YE92013	Quartz	Dace 73	73	STRATAGOLD CORPORATION - 100%	2019-05-24
YE92014	Quartz	Dace 74	74	STRATAGOLD CORPORATION - 100%	2019-05-24
YE92015	Quartz	Dace 75	75	STRATAGOLD CORPORATION - 100%	2019-05-24
YE92016	Quartz	Dace 76	76	STRATAGOLD CORPORATION - 100%	2019-05-24
YE92017	Quartz	Dace 77	77	STRATAGOLD CORPORATION - 100%	2019-05-24
YE92018	Quartz	Dace 78	78	STRATAGOLD CORPORATION - 100%	2019-05-24
YE92019	Quartz	Dace 79	79	STRATAGOLD CORPORATION - 100%	2019-05-24
YE92020	Quartz	Dace 80	80	STRATAGOLD CORPORATION - 100%	2019-05-24
YE92021	Quartz	Dace 81	81	STRATAGOLD CORPORATION - 100%	2019-05-24
YE92022	Quartz	Dace 82	82	STRATAGOLD CORPORATION - 100%	2019-05-24
YE92023	Quartz	Dace 83	83	STRATAGOLD CORPORATION - 100%	2019-05-24
YE92024	Quartz	Dace 84	84	STRATAGOLD CORPORATION - 100%	2019-05-24
YE92025	Quartz	Dace 85	85	STRATAGOLD CORPORATION - 100%	2019-05-24
YE92026	Quartz	Dace 86	86	STRATAGOLD CORPORATION - 100%	2019-05-24
YE92027	Quartz	Dace 87	87	STRATAGOLD CORPORATION - 100%	2019-05-24
YE92028	Quartz	Dace 88	88	STRATAGOLD CORPORATION - 100%	2019-05-24
YE92029	Quartz	Dace 89	89	STRATAGOLD CORPORATION - 100%	2019-05-24
YE92030	Quartz	Dace 90	90	STRATAGOLD CORPORATION - 100%	2019-05-24
YE92031	Quartz	Dace 91	91	STRATAGOLD CORPORATION - 100%	2019-05-24
YE92032	Quartz	Dace 92	92	STRATAGOLD CORPORATION - 100%	2019-05-24
YE92033	Quartz	Dace 93	93	STRATAGOLD CORPORATION - 100%	2019-05-24
YE92034	Quartz	Dace 94	94	STRATAGOLD CORPORATION - 100%	2019-05-24
YE92035	Quartz	Dace 95	95	STRATAGOLD CORPORATION - 100%	2019-05-24
YE92036	Quartz	Dace 96	96	STRATAGOLD CORPORATION - 100%	2019-05-24
YE92037	Quartz	Dace 97	97	STRATAGOLD CORPORATION - 100%	2019-05-24
YE92038	Quartz	Dace 98	98	STRATAGOLD CORPORATION - 100%	2019-05-24
YE92039	Quartz	Dace 99	99	STRATAGOLD CORPORATION - 100%	2019-05-24

NO NAME YMEP REPORT 2019

YE92040	Quartz	Dace 100	100	STRATAGOLD CORPORATION - 100%	2019-05-24
YE92041	Quartz	Dace 101	101	STRATAGOLD CORPORATION - 100%	2019-05-24
YE92042	Quartz	Dace 102	102	STRATAGOLD CORPORATION - 100%	2019-05-24
YE92043	Quartz	Dace 103	103	STRATAGOLD CORPORATION - 100%	2019-05-24
YE92044	Quartz	Dace 104	104	STRATAGOLD CORPORATION - 100%	2019-05-24
YE92045	Quartz	Dace 105	105	STRATAGOLD CORPORATION - 100%	2019-05-24
YE92046	Quartz	Dace 106	106	STRATAGOLD CORPORATION - 100%	2019-05-24
YE92047	Quartz	Dace 107	107	STRATAGOLD CORPORATION - 100%	2019-05-24
YE92048	Quartz	Dace 108	108	STRATAGOLD CORPORATION - 100%	2019-05-24
YE92049	Quartz	Dace 109	109	STRATAGOLD CORPORATION - 100%	2019-05-24
YE92050	Quartz	Dace 110	110	STRATAGOLD CORPORATION - 100%	2019-05-24
YE92051	Quartz	Dace 111	111	STRATAGOLD CORPORATION - 100%	2019-05-24
YE92052	Quartz	Dace 112	112	STRATAGOLD CORPORATION - 100%	2019-05-24
YE92053	Quartz	Dace 113	113	STRATAGOLD CORPORATION - 100%	2019-05-24
YE92054	Quartz	Dace 114	114	STRATAGOLD CORPORATION - 100%	2019-05-24
YE92055	Quartz	Dace 115	115	STRATAGOLD CORPORATION - 100%	2019-05-24
YE92056	Quartz	Dace 116	116	STRATAGOLD CORPORATION - 100%	2019-05-24
YE92057	Quartz	Dace 117	117	STRATAGOLD CORPORATION - 100%	2019-05-24
YE92058	Quartz	Dace 118	118	STRATAGOLD CORPORATION - 100%	2019-05-24
YE92059	Quartz	Dace 119	119	STRATAGOLD CORPORATION - 100%	2019-05-24
YE92060	Quartz	Dace 120	120	STRATAGOLD CORPORATION - 100%	2019-05-24
YE92061	Quartz	Dace 121	121	STRATAGOLD CORPORATION - 100%	2019-05-24
YE92062	Quartz	Dace 122	122	STRATAGOLD CORPORATION - 100%	2019-05-24
YE92063	Quartz	Dace 123	123	STRATAGOLD CORPORATION - 100%	2019-05-24
YE92064	Quartz	Dace 124	124	STRATAGOLD CORPORATION - 100%	2019-05-24
YE92065	Quartz	Dace 125	125	STRATAGOLD CORPORATION - 100%	2019-05-24
YE92066	Quartz	Dace 126	126	STRATAGOLD CORPORATION - 100%	2019-05-24
YE92067	Quartz	Dace 127	127	STRATAGOLD CORPORATION - 100%	2019-05-24
YE92068	Quartz	Dace 128	128	STRATAGOLD CORPORATION - 100%	2019-05-24
YE92069	Quartz	Dace 129	129	STRATAGOLD CORPORATION - 100%	2019-05-24
YE92070	Quartz	Dace 130	130	STRATAGOLD CORPORATION - 100%	2019-05-24
YE92071	Quartz	Dace 131	131	STRATAGOLD CORPORATION - 100%	2019-05-24
YE92072	Quartz	Dace 132	132	STRATAGOLD CORPORATION - 100%	2019-05-24
YE92073	Quartz	Dace 133	133	STRATAGOLD CORPORATION - 100%	2019-05-24
YE92074	Quartz	Dace 134	134	STRATAGOLD CORPORATION - 100%	2019-05-24
YE92075	Quartz	Dace 135	135	STRATAGOLD CORPORATION - 100%	2019-05-24
YE92076	Quartz	Dace 136	136	STRATAGOLD CORPORATION - 100%	2019-05-24
YE92077	Quartz	Dace 137	137	STRATAGOLD CORPORATION - 100%	2019-05-24
YE92078	Quartz	Dace 138	138	STRATAGOLD CORPORATION - 100%	2019-05-24
YE92079	Quartz	Dace 139	139	STRATAGOLD CORPORATION - 100%	2019-05-24
YE92080	Quartz	Dace 140	140	STRATAGOLD CORPORATION - 100%	2019-05-24
YE92081	Quartz	Dace 141	141	STRATAGOLD CORPORATION - 100%	2019-05-24
YE92082	Quartz	Dace 142	142	STRATAGOLD CORPORATION - 100%	2019-05-24

NO NAME YMEP REPORT 2019

YE92083	Quartz	Dace 143	143	STRATAGOLD CORPORATION - 100%	2019-05-24
YE92084	Quartz	Dace 144	144	STRATAGOLD CORPORATION - 100%	2019-05-24
YE92085	Quartz	Dace 145	145	STRATAGOLD CORPORATION - 100%	2019-05-24
YE92086	Quartz	Dace 146	146	STRATAGOLD CORPORATION - 100%	2019-05-24
YE92087	Quartz	Dace 147	147	STRATAGOLD CORPORATION - 100%	2019-05-24
YE92088	Quartz	Dace 148	148	STRATAGOLD CORPORATION - 100%	2019-05-24
YE92089	Quartz	Dace 149	149	STRATAGOLD CORPORATION - 100%	2019-05-24
YE92090	Quartz	Dace 150	150	STRATAGOLD CORPORATION - 100%	2019-05-24
YE92091	Quartz	Dace 151	151	STRATAGOLD CORPORATION - 100%	2019-05-24
YE92092	Quartz	Dace 152	152	STRATAGOLD CORPORATION - 100%	2019-05-24
YE92093	Quartz	Dace 153	153	STRATAGOLD CORPORATION - 100%	2019-05-24
YE92094	Quartz	Dace 154	154	STRATAGOLD CORPORATION - 100%	2019-05-24
YE92095	Quartz	Dace 155	155	STRATAGOLD CORPORATION - 100%	2019-05-24
YE92096	Quartz	Dace 156	156	STRATAGOLD CORPORATION - 100%	2019-05-24
YE92097	Quartz	Dace 157	157	STRATAGOLD CORPORATION - 100%	2019-05-24
YE92098	Quartz	Dace 158	158	STRATAGOLD CORPORATION - 100%	2019-05-24
YE92099	Quartz	Dace 159	159	STRATAGOLD CORPORATION - 100%	2019-05-24
YE92100	Quartz	Dace 160	160	STRATAGOLD CORPORATION - 100%	2019-05-24
YE92101	Quartz	Dace 161	161	STRATAGOLD CORPORATION - 100%	2019-05-24
YE92102	Quartz	Dace 162	162	STRATAGOLD CORPORATION - 100%	2019-05-24
YE92103	Quartz	Dace 163	163	STRATAGOLD CORPORATION - 100%	2019-05-24
YE92104	Quartz	Dace 164	164	STRATAGOLD CORPORATION - 100%	2019-05-24
YE92105	Quartz	Dace 165	165	STRATAGOLD CORPORATION - 100%	2019-05-24
YE92106	Quartz	Dace 166	166	STRATAGOLD CORPORATION - 100%	2019-05-24
YE92107	Quartz	Dace 167	167	STRATAGOLD CORPORATION - 100%	2019-05-24
YE92108	Quartz	Dace 168	168	STRATAGOLD CORPORATION - 100%	2019-05-24
YE92109	Quartz	Dace 169	169	STRATAGOLD CORPORATION - 100%	2019-05-24
YE92110	Quartz	Dace 170	170	STRATAGOLD CORPORATION - 100%	2019-05-24
YE92111	Quartz	Dace 171	171	STRATAGOLD CORPORATION - 100%	2019-05-24
YE92112	Quartz	Dace 172	172	STRATAGOLD CORPORATION - 100%	2019-05-24
YE92113	Quartz	Dace 173	173	STRATAGOLD CORPORATION - 100%	2019-05-24
YE92114	Quartz	Dace 174	174	STRATAGOLD CORPORATION - 100%	2019-05-24
YE92115	Quartz	Dace 175	175	STRATAGOLD CORPORATION - 100%	2019-05-24
YE92116	Quartz	Dace 176	176	STRATAGOLD CORPORATION - 100%	2019-05-24
YE92117	Quartz	Dace 177	177	STRATAGOLD CORPORATION - 100%	2019-05-24
YE92118	Quartz	Dace 178	178	STRATAGOLD CORPORATION - 100%	2019-05-24
YE92119	Quartz	Dace 179	179	STRATAGOLD CORPORATION - 100%	2019-05-24
YE92120	Quartz	Dace 180	180	STRATAGOLD CORPORATION - 100%	2019-05-24
YE92121	Quartz	Dace 181	181	STRATAGOLD CORPORATION - 100%	2019-05-24
YE92122	Quartz	Dace 182	182	STRATAGOLD CORPORATION - 100%	2019-05-24
YE92123	Quartz	Dace 183	183	STRATAGOLD CORPORATION - 100%	2019-05-24
YE92124	Quartz	Dace 184	184	STRATAGOLD CORPORATION - 100%	2019-05-24
YE92125	Quartz	Dace 185	185	STRATAGOLD CORPORATION - 100%	2019-05-24

NO NAME YMEP REPORT 2019

YE92126	Quartz	Dace 186	186	STRATAGOLD CORPORATION - 100%	2019-05-24
YE92127	Quartz	Dace 187	187	STRATAGOLD CORPORATION - 100%	2019-05-24
YE92128	Quartz	Dace 188	188	STRATAGOLD CORPORATION - 100%	2019-05-24
YE92129	Quartz	Dace 189	189	STRATAGOLD CORPORATION - 100%	2019-05-24
YE92130	Quartz	Dace 190	190	STRATAGOLD CORPORATION - 100%	2019-05-24
YE92131	Quartz	Dace 191	191	STRATAGOLD CORPORATION - 100%	2019-05-24
YE92132	Quartz	Dace 192	192	STRATAGOLD CORPORATION - 100%	2019-05-24
YE92133	Quartz	Dace 193	193	STRATAGOLD CORPORATION - 100%	2019-05-24
YE92134	Quartz	Dace 194	194	STRATAGOLD CORPORATION - 100%	2019-05-24
YE92135	Quartz	Dace 195	195	STRATAGOLD CORPORATION - 100%	2019-05-24
YE92136	Quartz	Dace 196	196	STRATAGOLD CORPORATION - 100%	2019-05-24
YE92137	Quartz	Dace 197	197	STRATAGOLD CORPORATION - 100%	2019-05-24
YE92138	Quartz	Dace 198	198	STRATAGOLD CORPORATION - 100%	2019-05-24
YE92139	Quartz	Dace 199	199	STRATAGOLD CORPORATION - 100%	2019-05-24
YE92140	Quartz	Dace 200	200	STRATAGOLD CORPORATION - 100%	2019-05-24
YE92141	Quartz	Dace 201	201	STRATAGOLD CORPORATION - 100%	2019-05-24
YE92142	Quartz	Dace 202	202	STRATAGOLD CORPORATION - 100%	2019-05-24
YE92143	Quartz	Dace 203	203	STRATAGOLD CORPORATION - 100%	2019-05-24
YE92144	Quartz	Dace 204	204	STRATAGOLD CORPORATION - 100%	2019-05-24
YE92145	Quartz	Dace 205	205	STRATAGOLD CORPORATION - 100%	2019-05-24
YE92146	Quartz	Dace 206	206	STRATAGOLD CORPORATION - 100%	2019-05-24
YE92147	Quartz	Dace 207	207	STRATAGOLD CORPORATION - 100%	2019-05-24
YE92148	Quartz	Dace 208	208	STRATAGOLD CORPORATION - 100%	2019-05-24
YE92149	Quartz	Dace 209	209	STRATAGOLD CORPORATION - 100%	2019-05-24
YE92150	Quartz	Dace 210	210	STRATAGOLD CORPORATION - 100%	2019-05-24
YE92151	Quartz	Dace 211	211	STRATAGOLD CORPORATION - 100%	2019-05-24
YE92152	Quartz	Dace 212	212	STRATAGOLD CORPORATION - 100%	2019-05-24
YE92153	Quartz	Dace 213	213	STRATAGOLD CORPORATION - 100%	2019-05-24
YE92154	Quartz	Dace 214	214	STRATAGOLD CORPORATION - 100%	2019-05-24
YE92155	Quartz	Dace 215	215	STRATAGOLD CORPORATION - 100%	2019-05-24
YE92156	Quartz	Dace 216	216	STRATAGOLD CORPORATION - 100%	2019-05-24
YE92157	Quartz	Dace 217	217	STRATAGOLD CORPORATION - 100%	2019-05-24
YE92158	Quartz	Dace 218	218	STRATAGOLD CORPORATION - 100%	2019-05-24
YE92159	Quartz	Dace 219	219	STRATAGOLD CORPORATION - 100%	2019-05-24
YE92160	Quartz	Dace 220	220	STRATAGOLD CORPORATION - 100%	2019-05-24
YE92161	Quartz	Dace 221	221	STRATAGOLD CORPORATION - 100%	2019-05-24
YE92162	Quartz	Dace 222	222	STRATAGOLD CORPORATION - 100%	2019-05-24
YE92163	Quartz	Dace 223	223	STRATAGOLD CORPORATION - 100%	2019-05-24
YE92164	Quartz	Dace 224	224	STRATAGOLD CORPORATION - 100%	2019-05-24
YE92165	Quartz	Dace 225	225	STRATAGOLD CORPORATION - 100%	2019-05-24
YE92166	Quartz	Dace 226	226	STRATAGOLD CORPORATION - 100%	2019-05-24
YE92167	Quartz	Dace 227	227	STRATAGOLD CORPORATION - 100%	2019-05-24
YE92168	Quartz	Dace 228	228	STRATAGOLD CORPORATION - 100%	2019-05-24

NO NAME YMEP REPORT 2019

YE92169	Quartz	Dace 229	229	STRATAGOLD CORPORATION - 100%	2019-05-24
YE92170	Quartz	Dace 230	230	STRATAGOLD CORPORATION - 100%	2019-05-24
YE92171	Quartz	Dace 231	231	STRATAGOLD CORPORATION - 100%	2019-05-24
YE92172	Quartz	Dace 232	232	STRATAGOLD CORPORATION - 100%	2019-05-24
YE92173	Quartz	Dace 233	233	STRATAGOLD CORPORATION - 100%	2019-05-24
YE92174	Quartz	Dace 234	234	STRATAGOLD CORPORATION - 100%	2019-05-24
YE92175	Quartz	Dace 235	235	STRATAGOLD CORPORATION - 100%	2019-05-24
YE92176	Quartz	Dace 236	236	STRATAGOLD CORPORATION - 100%	2019-05-24
YE92177	Quartz	Dace 237	237	STRATAGOLD CORPORATION - 100%	2019-05-24
YE92178	Quartz	Dace 238	238	STRATAGOLD CORPORATION - 100%	2019-05-24
YE92179	Quartz	Dace 239	239	STRATAGOLD CORPORATION - 100%	2019-05-24
YE92180	Quartz	Dace 240	240	STRATAGOLD CORPORATION - 100%	2019-05-24
YE92181	Quartz	Dace 241	241	STRATAGOLD CORPORATION - 100%	2019-05-24
YE92182	Quartz	Dace 242	242	STRATAGOLD CORPORATION - 100%	2019-05-24
YE92183	Quartz	Dace 243	243	STRATAGOLD CORPORATION - 100%	2019-05-24
YE92184	Quartz	Dace 244	244	STRATAGOLD CORPORATION - 100%	2019-05-24
YE92185	Quartz	Dace 245	245	STRATAGOLD CORPORATION - 100%	2019-05-24
YE92186	Quartz	Dace 246	246	STRATAGOLD CORPORATION - 100%	2019-05-24
YE92187	Quartz	Dace 247	247	STRATAGOLD CORPORATION - 100%	2019-05-24
YE92188	Quartz	Dace 248	248	STRATAGOLD CORPORATION - 100%	2019-05-24
YE92189	Quartz	Dace 249	249	STRATAGOLD CORPORATION - 100%	2019-05-24
YE92190	Quartz	Dace 250	250	STRATAGOLD CORPORATION - 100%	2019-05-24
YE92191	Quartz	Dace 251	251	STRATAGOLD CORPORATION - 100%	2019-05-24
YE92192	Quartz	Dace 252	252	STRATAGOLD CORPORATION - 100%	2019-05-24
YE92193	Quartz	Dace 253	253	STRATAGOLD CORPORATION - 100%	2019-05-24
YE92194	Quartz	Dace 254	254	STRATAGOLD CORPORATION - 100%	2019-05-24
YE92195	Quartz	Dace 255	255	STRATAGOLD CORPORATION - 100%	2019-05-24
YE92196	Quartz	Dace 256	256	STRATAGOLD CORPORATION - 100%	2019-05-24
YE92197	Quartz	Dace 257	257	STRATAGOLD CORPORATION - 100%	2019-05-24
YE92198	Quartz	Dace 258	258	STRATAGOLD CORPORATION - 100%	2019-05-24
YE92199	Quartz	Dace 259	259	STRATAGOLD CORPORATION - 100%	2019-05-24
YE92200	Quartz	Dace 260	260	STRATAGOLD CORPORATION - 100%	2019-05-24
YE92201	Quartz	Dace 261	261	STRATAGOLD CORPORATION - 100%	2019-05-24
YE92202	Quartz	Dace 262	262	STRATAGOLD CORPORATION - 100%	2019-05-24
YE92203	Quartz	Dace 263	263	STRATAGOLD CORPORATION - 100%	2019-05-24
YE92204	Quartz	Dace 264	264	STRATAGOLD CORPORATION - 100%	2019-05-24
YE92205	Quartz	Dace 265	265	STRATAGOLD CORPORATION - 100%	2019-05-24
YE92206	Quartz	Dace 266	266	STRATAGOLD CORPORATION - 100%	2019-05-24
YE92207	Quartz	Dace 267	267	STRATAGOLD CORPORATION - 100%	2019-05-24
YE92208	Quartz	Dace 268	268	STRATAGOLD CORPORATION - 100%	2019-05-24
YE92209	Quartz	Dace 269	269	STRATAGOLD CORPORATION - 100%	2019-05-24
YE92210	Quartz	Dace 270	270	STRATAGOLD CORPORATION - 100%	2019-05-24
YE92211	Quartz	Dace 271	271	STRATAGOLD CORPORATION - 100%	2019-05-24

NO NAME YMEP REPORT 2019

YE92212	Quartz	Dace 272	272	STRATAGOLD CORPORATION - 100%	2019-05-24
YE92213	Quartz	Dace 273	273	STRATAGOLD CORPORATION - 100%	2019-05-24
YE92214	Quartz	Dace 274	274	STRATAGOLD CORPORATION - 100%	2019-05-24
YE92215	Quartz	Dace 275	275	STRATAGOLD CORPORATION - 100%	2019-05-24
YE92216	Quartz	Dace 276	276	STRATAGOLD CORPORATION - 100%	2019-05-24
YE92217	Quartz	Dace 277	277	STRATAGOLD CORPORATION - 100%	2019-05-24
YE92218	Quartz	Dace 278	278	STRATAGOLD CORPORATION - 100%	2019-05-24
YE92219	Quartz	Dace 279	279	STRATAGOLD CORPORATION - 100%	2019-05-24
YE92220	Quartz	Dace 280	280	STRATAGOLD CORPORATION - 100%	2019-05-24
YE92221	Quartz	Dace 281	281	STRATAGOLD CORPORATION - 100%	2019-05-24
YE92222	Quartz	Dace 282	282	STRATAGOLD CORPORATION - 100%	2019-05-24
YE92223	Quartz	Dace 283	283	STRATAGOLD CORPORATION - 100%	2019-05-24
YE92224	Quartz	Dace 284	284	STRATAGOLD CORPORATION - 100%	2019-05-24
YE92225	Quartz	Dace 285	285	STRATAGOLD CORPORATION - 100%	2019-05-24
YE92226	Quartz	Dace 286	286	STRATAGOLD CORPORATION - 100%	2019-05-24
YE92227	Quartz	Dace 287	287	STRATAGOLD CORPORATION - 100%	2019-05-24
YE92228	Quartz	Dace 288	288	STRATAGOLD CORPORATION - 100%	2019-05-24
YE92229	Quartz	Dace 289	289	STRATAGOLD CORPORATION - 100%	2019-05-24
YE92230	Quartz	Dace 290	290	STRATAGOLD CORPORATION - 100%	2019-05-24
YE92231	Quartz	Dace 291	291	STRATAGOLD CORPORATION - 100%	2019-05-24
YE92232	Quartz	Dace 292	292	STRATAGOLD CORPORATION - 100%	2019-05-24
YE92233	Quartz	Dace 293	293	STRATAGOLD CORPORATION - 100%	2019-05-24
YE92234	Quartz	Dace 294	294	STRATAGOLD CORPORATION - 100%	2019-05-24
YE92235	Quartz	Dace 295	295	STRATAGOLD CORPORATION - 100%	2019-05-24
YE92236	Quartz	Dace 296	296	STRATAGOLD CORPORATION - 100%	2019-05-24
YE92237	Quartz	Dace 297	297	STRATAGOLD CORPORATION - 100%	2019-05-24
YE92238	Quartz	Dace 298	298	STRATAGOLD CORPORATION - 100%	2019-05-24
YE92239	Quartz	Dace 299	299	STRATAGOLD CORPORATION - 100%	2019-05-24
YE92240	Quartz	Dace 300	300	STRATAGOLD CORPORATION - 100%	2019-05-24
YE92241	Quartz	Dace 301	301	STRATAGOLD CORPORATION - 100%	2019-05-24
YE92242	Quartz	Dace 302	302	STRATAGOLD CORPORATION - 100%	2019-05-24
YE92243	Quartz	Dace 303	303	STRATAGOLD CORPORATION - 100%	2019-05-24
YE92244	Quartz	Dace 304	304	STRATAGOLD CORPORATION - 100%	2019-05-24
YE92245	Quartz	Dace 305	305	STRATAGOLD CORPORATION - 100%	2019-05-24
YE92246	Quartz	Dace 306	306	STRATAGOLD CORPORATION - 100%	2019-05-24
YE92247	Quartz	Dace 307	307	STRATAGOLD CORPORATION - 100%	2019-05-24
YE92248	Quartz	Dace 308	308	STRATAGOLD CORPORATION - 100%	2019-05-24
YE92249	Quartz	Dace 309	309	STRATAGOLD CORPORATION - 100%	2019-05-24
YE92250	Quartz	Dace 310	310	STRATAGOLD CORPORATION - 100%	2019-05-24
YE92251	Quartz	Dace 311	311	STRATAGOLD CORPORATION - 100%	2019-05-24
YE92252	Quartz	Dace 312	312	STRATAGOLD CORPORATION - 100%	2019-05-24
YE92253	Quartz	Dace 313	313	STRATAGOLD CORPORATION - 100%	2019-05-24
YE92254	Quartz	Dace 314	314	STRATAGOLD CORPORATION - 100%	2019-05-24

NO NAME YMEP REPORT 2019

YE92255	Quartz	Dace 315	315	STRATAGOLD CORPORATION - 100%	2019-05-24
YE92256	Quartz	Dace 316	316	STRATAGOLD CORPORATION - 100%	2019-05-24
YE92257	Quartz	Dace 317	317	STRATAGOLD CORPORATION - 100%	2019-05-24
YE92258	Quartz	Dace 318	318	STRATAGOLD CORPORATION - 100%	2019-05-24
YE92259	Quartz	Dace 319	319	STRATAGOLD CORPORATION - 100%	2019-05-24
YE92260	Quartz	Dace 320	320	STRATAGOLD CORPORATION - 100%	2019-05-24
YE92261	Quartz	Dace 321	321	STRATAGOLD CORPORATION - 100%	2019-05-24
YE92262	Quartz	Dace 322	322	STRATAGOLD CORPORATION - 100%	2019-05-24
YE92263	Quartz	Dace 323	323	STRATAGOLD CORPORATION - 100%	2019-05-24
YE92264	Quartz	Dace 324	324	STRATAGOLD CORPORATION - 100%	2019-05-24
YE92265	Quartz	Dace 325	325	STRATAGOLD CORPORATION - 100%	2019-05-24
YE92266	Quartz	Dace 326	326	STRATAGOLD CORPORATION - 100%	2019-05-24
YE92267	Quartz	Dace 327	327	STRATAGOLD CORPORATION - 100%	2019-05-24
YE92268	Quartz	Dace 328	328	STRATAGOLD CORPORATION - 100%	2019-05-24
YE92269	Quartz	Dace 329	329	STRATAGOLD CORPORATION - 100%	2019-05-24
YE92270	Quartz	Dace 330	330	STRATAGOLD CORPORATION - 100%	2019-05-24
YE92271	Quartz	Dace 331	331	STRATAGOLD CORPORATION - 100%	2019-05-24
YE92272	Quartz	Dace 332	332	STRATAGOLD CORPORATION - 100%	2019-05-24
YE92273	Quartz	Dace 333	333	STRATAGOLD CORPORATION - 100%	2019-05-24
YE92274	Quartz	Dace 334	334	STRATAGOLD CORPORATION - 100%	2019-05-24
YE92275	Quartz	Dace 335	335	STRATAGOLD CORPORATION - 100%	2019-05-24
YE92276	Quartz	Dace 336	336	STRATAGOLD CORPORATION - 100%	2019-05-24
YE92277	Quartz	Dace 337	337	STRATAGOLD CORPORATION - 100%	2019-05-24
YE92278	Quartz	Dace 338	338	STRATAGOLD CORPORATION - 100%	2019-05-24
YE92279	Quartz	Dace 339	339	STRATAGOLD CORPORATION - 100%	2019-05-24
YE92280	Quartz	Dace 340	340	STRATAGOLD CORPORATION - 100%	2019-05-24
YE92281	Quartz	Dace 341	341	STRATAGOLD CORPORATION - 100%	2019-05-24
YE92282	Quartz	Dace 342	342	STRATAGOLD CORPORATION - 100%	2019-05-24
YE92283	Quartz	Dace 343	343	STRATAGOLD CORPORATION - 100%	2019-05-24
YE92284	Quartz	Dace 344	344	STRATAGOLD CORPORATION - 100%	2019-05-24
YE92285	Quartz	Dace 345	345	STRATAGOLD CORPORATION - 100%	2019-05-24
YE92286	Quartz	Dace 346	346	STRATAGOLD CORPORATION - 100%	2019-05-24
YE92287	Quartz	Dace 347	347	STRATAGOLD CORPORATION - 100%	2019-05-24
YE92288	Quartz	Dace 348	348	STRATAGOLD CORPORATION - 100%	2019-05-24
YE92289	Quartz	Dace 349	349	STRATAGOLD CORPORATION - 100%	2019-05-24
YE92290	Quartz	Dace 350	350	STRATAGOLD CORPORATION - 100%	2019-05-24
YE92291	Quartz	Dace 351	351	STRATAGOLD CORPORATION - 100%	2019-05-24
YE92292	Quartz	Dace 352	352	STRATAGOLD CORPORATION - 100%	2019-05-24
YE92293	Quartz	Dace 353	353	STRATAGOLD CORPORATION - 100%	2019-05-24
YE92294	Quartz	Dace 354	354	STRATAGOLD CORPORATION - 100%	2019-05-24
YE92295	Quartz	Dace 355	355	STRATAGOLD CORPORATION - 100%	2019-05-24
YE92296	Quartz	Dace 356	356	STRATAGOLD CORPORATION - 100%	2019-05-24
YE92297	Quartz	Dace 357	357	STRATAGOLD CORPORATION - 100%	2019-05-24

NO NAME YMEP REPORT 2019

YE92298	Quartz	Dace 358	358	STRATAGOLD CORPORATION - 100%	2019-05-24
YE92299	Quartz	Dace 359	359	STRATAGOLD CORPORATION - 100%	2019-05-24
YE92300	Quartz	Dace 360	360	STRATAGOLD CORPORATION - 100%	2019-05-24
YE92301	Quartz	Dace 361	361	STRATAGOLD CORPORATION - 100%	2019-05-24
YE92302	Quartz	Dace 362	362	STRATAGOLD CORPORATION - 100%	2019-05-24
YE92303	Quartz	Dace 363	363	STRATAGOLD CORPORATION - 100%	2019-05-24
YE92304	Quartz	Dace 364	364	STRATAGOLD CORPORATION - 100%	2019-05-24
YE92305	Quartz	Dace 365	365	STRATAGOLD CORPORATION - 100%	2019-05-24
YE92306	Quartz	Dace 366	366	STRATAGOLD CORPORATION - 100%	2019-05-24
YE92307	Quartz	Dace 367	367	STRATAGOLD CORPORATION - 100%	2019-05-24
YE92308	Quartz	Dace 368	368	STRATAGOLD CORPORATION - 100%	2019-05-24
YE92309	Quartz	Dace 369	369	STRATAGOLD CORPORATION - 100%	2019-05-24
YE92310	Quartz	Dace 370	370	STRATAGOLD CORPORATION - 100%	2019-05-24
YE92311	Quartz	Dace 371	371	STRATAGOLD CORPORATION - 100%	2019-05-24
YE92312	Quartz	Dace 372	372	STRATAGOLD CORPORATION - 100%	2019-05-24
YE92313	Quartz	Dace 373	373	STRATAGOLD CORPORATION - 100%	2019-05-24
YE92314	Quartz	Dace 374	374	STRATAGOLD CORPORATION - 100%	2019-05-24
YE92315	Quartz	Dace 375	375	STRATAGOLD CORPORATION - 100%	2019-05-24
YE92316	Quartz	Dace 376	376	STRATAGOLD CORPORATION - 100%	2019-05-24
YE92317	Quartz	Dace 377	377	STRATAGOLD CORPORATION - 100%	2019-05-24
YE92318	Quartz	Dace 378	378	STRATAGOLD CORPORATION - 100%	2019-05-24
YE92319	Quartz	Dace 379	379	STRATAGOLD CORPORATION - 100%	2019-05-24
YE92320	Quartz	Dace 380	380	STRATAGOLD CORPORATION - 100%	2019-05-24
YE92321	Quartz	Dace 381	381	STRATAGOLD CORPORATION - 100%	2019-05-24
YE92322	Quartz	Dace 382	382	STRATAGOLD CORPORATION - 100%	2019-05-24
YE92323	Quartz	Dace 383	383	STRATAGOLD CORPORATION - 100%	2019-05-24
YE92324	Quartz	Dace 384	384	STRATAGOLD CORPORATION - 100%	2019-05-24
YE92325	Quartz	Dace 385	385	STRATAGOLD CORPORATION - 100%	2019-05-24
YE92326	Quartz	Dace 386	386	STRATAGOLD CORPORATION - 100%	2019-05-24
YE92327	Quartz	Dace 387	387	STRATAGOLD CORPORATION - 100%	2019-05-24
YE92328	Quartz	Dace 388	388	STRATAGOLD CORPORATION - 100%	2019-05-24
YE92329	Quartz	Dace 389	389	STRATAGOLD CORPORATION - 100%	2019-05-24
YE92330	Quartz	Dace 390	390	STRATAGOLD CORPORATION - 100%	2019-05-24
YE92331	Quartz	Dace 391	391	STRATAGOLD CORPORATION - 100%	2019-05-24
YE92332	Quartz	Dace 392	392	STRATAGOLD CORPORATION - 100%	2019-05-24
YE92333	Quartz	Dace 393	393	STRATAGOLD CORPORATION - 100%	2019-05-24
YE92334	Quartz	Dace 394	394	STRATAGOLD CORPORATION - 100%	2019-05-24
YE92335	Quartz	Dace 395	395	STRATAGOLD CORPORATION - 100%	2019-05-24
YE92336	Quartz	Dace 396	396	STRATAGOLD CORPORATION - 100%	2019-05-24
YE92337	Quartz	Dace 397	397	STRATAGOLD CORPORATION - 100%	2019-05-24
YE92338	Quartz	Dace 398	398	STRATAGOLD CORPORATION - 100%	2019-05-24
YE92339	Quartz	Dace 399	399	STRATAGOLD CORPORATION - 100%	2019-05-24
YE92340	Quartz	Dace 400	400	STRATAGOLD CORPORATION - 100%	2019-05-24

NO NAME YMEP REPORT 2019

YE92341	Quartz	Dace 401	401	STRATAGOLD CORPORATION - 100%	2019-05-24
YE92342	Quartz	Dace 402	402	STRATAGOLD CORPORATION - 100%	2019-05-24
YE92343	Quartz	Dace 403	403	STRATAGOLD CORPORATION - 100%	2019-05-24
YE92344	Quartz	Dace 404	404	STRATAGOLD CORPORATION - 100%	2019-05-24
YE92345	Quartz	Dace 405	405	STRATAGOLD CORPORATION - 100%	2019-05-24
YE92346	Quartz	Dace 406	406	STRATAGOLD CORPORATION - 100%	2019-05-24
YE92347	Quartz	Dace 407	407	STRATAGOLD CORPORATION - 100%	2019-05-24
YE92348	Quartz	Dace 408	408	STRATAGOLD CORPORATION - 100%	2019-05-24
YE92349	Quartz	Dace 409	409	STRATAGOLD CORPORATION - 100%	2019-05-24
YE92350	Quartz	Dace 410	410	STRATAGOLD CORPORATION - 100%	2019-05-24
YE92351	Quartz	Dace 411	411	STRATAGOLD CORPORATION - 100%	2019-05-24
YE92352	Quartz	Dace 412	412	STRATAGOLD CORPORATION - 100%	2019-05-24
YE92353	Quartz	Dace 413	413	STRATAGOLD CORPORATION - 100%	2019-05-24
YE92354	Quartz	Dace 414	414	STRATAGOLD CORPORATION - 100%	2019-05-24
YE92355	Quartz	Dace 415	415	STRATAGOLD CORPORATION - 100%	2019-05-24
YE92356	Quartz	Dace 416	416	STRATAGOLD CORPORATION - 100%	2019-05-24
YE92357	Quartz	Dace 417	417	STRATAGOLD CORPORATION - 100%	2019-05-24
YE92358	Quartz	Dace 418	418	STRATAGOLD CORPORATION - 100%	2019-05-24
YE92359	Quartz	Dace 419	419	STRATAGOLD CORPORATION - 100%	2019-05-24
YE92360	Quartz	Dace 420	420	STRATAGOLD CORPORATION - 100%	2019-05-24
YE92361	Quartz	Dace 421	421	STRATAGOLD CORPORATION - 100%	2019-05-24
YE92362	Quartz	Dace 422	422	STRATAGOLD CORPORATION - 100%	2019-05-24
YE92363	Quartz	Dace 423	423	STRATAGOLD CORPORATION - 100%	2019-05-24
YE92364	Quartz	Dace 424	424	STRATAGOLD CORPORATION - 100%	2019-05-24
YE92365	Quartz	Dace 425	425	STRATAGOLD CORPORATION - 100%	2019-05-24
YE92366	Quartz	Dace 426	426	STRATAGOLD CORPORATION - 100%	2019-05-24
YE92367	Quartz	Dace 427	427	STRATAGOLD CORPORATION - 100%	2019-05-24
YE92368	Quartz	Dace 428	428	STRATAGOLD CORPORATION - 100%	2019-05-24
YE92369	Quartz	Dace 429	429	STRATAGOLD CORPORATION - 100%	2019-05-24
YE92370	Quartz	Dace 430	430	STRATAGOLD CORPORATION - 100%	2019-05-24
YE92371	Quartz	Dace 431	431	STRATAGOLD CORPORATION - 100%	2019-05-24
YE92372	Quartz	Dace 432	432	STRATAGOLD CORPORATION - 100%	2019-05-24
YE92373	Quartz	Dace 433	433	STRATAGOLD CORPORATION - 100%	2019-05-24
YE92374	Quartz	Dace 434	434	STRATAGOLD CORPORATION - 100%	2019-05-24
YE92375	Quartz	Dace 435	435	STRATAGOLD CORPORATION - 100%	2019-05-24
YE92376	Quartz	Dace 436	436	STRATAGOLD CORPORATION - 100%	2019-05-24
YE92377	Quartz	Dace 437	437	STRATAGOLD CORPORATION - 100%	2019-05-24
YE92378	Quartz	Dace 438	438	STRATAGOLD CORPORATION - 100%	2019-05-24
YE92379	Quartz	Dace 439	439	STRATAGOLD CORPORATION - 100%	2019-05-24
YE92380	Quartz	Dace 440	440	STRATAGOLD CORPORATION - 100%	2019-05-24
YE92381	Quartz	Dace 441	441	STRATAGOLD CORPORATION - 100%	2019-05-24
YE92382	Quartz	Dace 442	442	STRATAGOLD CORPORATION - 100%	2019-05-24
YE92383	Quartz	Dace 443	443	STRATAGOLD CORPORATION - 100%	2019-05-24

NO NAME YMEP REPORT 2019

YE92384	Quartz	Dace 444	444	STRATAGOLD CORPORATION - 100%	2019-05-24
YE92385	Quartz	Dace 445	445	STRATAGOLD CORPORATION - 100%	2019-05-24
YE92386	Quartz	Dace 446	446	STRATAGOLD CORPORATION - 100%	2019-05-24
YE92387	Quartz	Dace 447	447	STRATAGOLD CORPORATION - 100%	2019-05-24
YE92388	Quartz	Dace 448	448	STRATAGOLD CORPORATION - 100%	2019-05-24
YE92389	Quartz	Dace 449	449	STRATAGOLD CORPORATION - 100%	2019-05-24
YE92390	Quartz	Dace 450	450	STRATAGOLD CORPORATION - 100%	2019-05-24
YE92391	Quartz	Dace 451	451	STRATAGOLD CORPORATION - 100%	2019-05-24
YE92392	Quartz	Dace 452	452	STRATAGOLD CORPORATION - 100%	2019-05-24
YE92393	Quartz	Dace 453	453	STRATAGOLD CORPORATION - 100%	2019-05-24
YE92394	Quartz	Dace 454	454	STRATAGOLD CORPORATION - 100%	2019-05-24
YE92395	Quartz	Dace 455	455	STRATAGOLD CORPORATION - 100%	2019-05-24
YE92396	Quartz	Dace 456	456	STRATAGOLD CORPORATION - 100%	2019-05-24
YE92397	Quartz	Dace 457	457	STRATAGOLD CORPORATION - 100%	2019-05-24
YE92398	Quartz	Dace 458	458	STRATAGOLD CORPORATION - 100%	2019-05-24
YE92399	Quartz	Dace 459	459	STRATAGOLD CORPORATION - 100%	2019-05-24
YE92400	Quartz	Dace 460	460	STRATAGOLD CORPORATION - 100%	2019-05-24
YE92401	Quartz	Dace 461	461	STRATAGOLD CORPORATION - 100%	2019-05-24
YE92402	Quartz	Dace 462	462	STRATAGOLD CORPORATION - 100%	2019-05-24
YE92403	Quartz	Dace 463	463	STRATAGOLD CORPORATION - 100%	2019-05-24
YE92404	Quartz	Dace 464	464	STRATAGOLD CORPORATION - 100%	2019-05-24
YE92405	Quartz	Dace 465	465	STRATAGOLD CORPORATION - 100%	2019-05-24
YE92406	Quartz	Dace 466	466	STRATAGOLD CORPORATION - 100%	2019-05-24
YE92407	Quartz	Dace 467	467	STRATAGOLD CORPORATION - 100%	2019-05-24
YE92408	Quartz	Dace 468	468	STRATAGOLD CORPORATION - 100%	2019-05-24
YE92409	Quartz	Dace 469	469	STRATAGOLD CORPORATION - 100%	2019-05-24
YE92410	Quartz	Dace 470	470	STRATAGOLD CORPORATION - 100%	2019-05-24
YE92411	Quartz	Dace 471	471	STRATAGOLD CORPORATION - 100%	2019-05-24
YE92412	Quartz	Dace 472	472	STRATAGOLD CORPORATION - 100%	2019-05-24
YE92413	Quartz	Dace 473	473	STRATAGOLD CORPORATION - 100%	2019-05-24
YE92414	Quartz	Dace 474	474	STRATAGOLD CORPORATION - 100%	2019-05-24
YE92415	Quartz	Dace 475	475	STRATAGOLD CORPORATION - 100%	2019-05-24
YE92416	Quartz	Dace 476	476	STRATAGOLD CORPORATION - 100%	2019-05-24
YE92417	Quartz	Dace 477	477	STRATAGOLD CORPORATION - 100%	2019-05-24
YE92418	Quartz	Dace 478	478	STRATAGOLD CORPORATION - 100%	2019-05-24
YE92419	Quartz	Dace 479	479	STRATAGOLD CORPORATION - 100%	2019-05-24
YE92420	Quartz	Dace 480	480	STRATAGOLD CORPORATION - 100%	2019-05-24
YE92421	Quartz	Dace 481	481	STRATAGOLD CORPORATION - 100%	2019-05-24
YE92422	Quartz	Dace 482	482	STRATAGOLD CORPORATION - 100%	2019-05-24
YE92423	Quartz	Dace 483	483	STRATAGOLD CORPORATION - 100%	2019-05-24
YE92424	Quartz	Dace 484	484	STRATAGOLD CORPORATION - 100%	2019-05-24
YE92425	Quartz	Dace 485	485	STRATAGOLD CORPORATION - 100%	2019-05-24
YE92426	Quartz	Dace 486	486	STRATAGOLD CORPORATION - 100%	2019-05-24

NO NAME YMEP REPORT 2019

YE92427	Quartz	Dace 487	487	STRATAGOLD CORPORATION - 100%	2019-05-24
YE92428	Quartz	Dace 488	488	STRATAGOLD CORPORATION - 100%	2019-05-24
YE92429	Quartz	Dace 489	489	STRATAGOLD CORPORATION - 100%	2019-05-24
YE92430	Quartz	Dace 490	490	STRATAGOLD CORPORATION - 100%	2019-05-24
YE92431	Quartz	Dace 491	491	STRATAGOLD CORPORATION - 100%	2019-05-24
YE92432	Quartz	Dace 492	492	STRATAGOLD CORPORATION - 100%	2019-05-24
YE92433	Quartz	Dace 493	493	STRATAGOLD CORPORATION - 100%	2019-05-24
YE92434	Quartz	Dace 494	494	STRATAGOLD CORPORATION - 100%	2019-05-24
YE92435	Quartz	Dace 495	495	STRATAGOLD CORPORATION - 100%	2019-05-24
YE92436	Quartz	Dace 496	496	STRATAGOLD CORPORATION - 100%	2019-05-24
YE92437	Quartz	Dace 497	497	STRATAGOLD CORPORATION - 100%	2019-05-24
YE92438	Quartz	Dace 498	498	STRATAGOLD CORPORATION - 100%	2019-05-24
YE92439	Quartz	Dace 499	499	STRATAGOLD CORPORATION - 100%	2019-05-24
YE92440	Quartz	Dace 500	500	STRATAGOLD CORPORATION - 100%	2019-05-24
YE92441	Quartz	Dace 501	501	STRATAGOLD CORPORATION - 100%	2019-05-24
YE92442	Quartz	Dace 502	502	STRATAGOLD CORPORATION - 100%	2019-05-24
YE92443	Quartz	Dace 503	503	STRATAGOLD CORPORATION - 100%	2019-05-24
YE92444	Quartz	Dace 504	504	STRATAGOLD CORPORATION - 100%	2019-05-24
YE92445	Quartz	Dace 505	505	STRATAGOLD CORPORATION - 100%	2019-05-24
YE92446	Quartz	Dace 506	506	STRATAGOLD CORPORATION - 100%	2019-05-24
YE92447	Quartz	Dace 507	507	STRATAGOLD CORPORATION - 100%	2019-05-24
YE92448	Quartz	Dace 508	508	STRATAGOLD CORPORATION - 100%	2019-05-24
YE92449	Quartz	Dace 509	509	STRATAGOLD CORPORATION - 100%	2019-05-24
YE92450	Quartz	Dace 510	510	STRATAGOLD CORPORATION - 100%	2019-05-24
YE92451	Quartz	Dace 511	511	STRATAGOLD CORPORATION - 100%	2019-05-24
YE92452	Quartz	Dace 512	512	STRATAGOLD CORPORATION - 100%	2019-05-24
YE92453	Quartz	Dace 513	513	STRATAGOLD CORPORATION - 100%	2019-05-24
YE92454	Quartz	Dace 514	514	STRATAGOLD CORPORATION - 100%	2019-05-24
YE92455	Quartz	Dace 515	515	STRATAGOLD CORPORATION - 100%	2019-05-24
YE92456	Quartz	Dace 516	516	STRATAGOLD CORPORATION - 100%	2019-05-24
YE92457	Quartz	Dace 517	517	STRATAGOLD CORPORATION - 100%	2019-05-24
YE92458	Quartz	Dace 518	518	STRATAGOLD CORPORATION - 100%	2019-05-24
YE92459	Quartz	Dace 519	519	STRATAGOLD CORPORATION - 100%	2019-05-24
YE92460	Quartz	Dace 520	520	STRATAGOLD CORPORATION - 100%	2019-05-24
YE92461	Quartz	Dace 521	521	STRATAGOLD CORPORATION - 100%	2019-05-24
YE92462	Quartz	Dace 522	522	STRATAGOLD CORPORATION - 100%	2019-05-24
YE92463	Quartz	Dace 523	523	STRATAGOLD CORPORATION - 100%	2019-05-24
YE92464	Quartz	Dace 524	524	STRATAGOLD CORPORATION - 100%	2019-05-24
YE92465	Quartz	Dace 525	525	STRATAGOLD CORPORATION - 100%	2019-05-24
YE92466	Quartz	Dace 526	526	STRATAGOLD CORPORATION - 100%	2019-05-24
YE92467	Quartz	Dace 527	527	STRATAGOLD CORPORATION - 100%	2019-05-24
YE92468	Quartz	Dace 528	528	STRATAGOLD CORPORATION - 100%	2019-05-24
YE92469	Quartz	Dace 529	529	STRATAGOLD CORPORATION - 100%	2019-05-24

NO NAME YMEP REPORT 2019

YE92470	Quartz	Dace 530	530	STRATAGOLD CORPORATION - 100%	2019-05-24
YE92471	Quartz	Dace 531	531	STRATAGOLD CORPORATION - 100%	2019-05-24
YE92472	Quartz	Dace 532	532	STRATAGOLD CORPORATION - 100%	2019-05-24
YE92473	Quartz	Dace 533	533	STRATAGOLD CORPORATION - 100%	2019-05-24
YE92474	Quartz	Dace 534	534	STRATAGOLD CORPORATION - 100%	2019-05-24
YE92475	Quartz	Dace 535	535	STRATAGOLD CORPORATION - 100%	2019-05-24
YE92476	Quartz	Dace 536	536	STRATAGOLD CORPORATION - 100%	2019-05-24
YE92477	Quartz	Dace 537	537	STRATAGOLD CORPORATION - 100%	2019-05-24
YE92478	Quartz	Dace 538	538	STRATAGOLD CORPORATION - 100%	2019-05-24
YE92479	Quartz	Dace 539	539	STRATAGOLD CORPORATION - 100%	2019-05-24
YE92480	Quartz	Dace 540	540	STRATAGOLD CORPORATION - 100%	2019-05-24
YE92481	Quartz	Dace 541	541	STRATAGOLD CORPORATION - 100%	2019-05-24
YE92482	Quartz	Dace 542	542	STRATAGOLD CORPORATION - 100%	2019-05-24
YE92483	Quartz	Dace 543	543	STRATAGOLD CORPORATION - 100%	2019-05-24
YE92484	Quartz	Dace 544	544	STRATAGOLD CORPORATION - 100%	2019-05-24
YE92485	Quartz	Dace 545	545	STRATAGOLD CORPORATION - 100%	2019-05-24
YE92486	Quartz	Dace 546	546	STRATAGOLD CORPORATION - 100%	2019-05-24
YE92487	Quartz	Dace 547	547	STRATAGOLD CORPORATION - 100%	2019-05-24
YE92488	Quartz	Dace 548	548	STRATAGOLD CORPORATION - 100%	2019-05-24
YE92489	Quartz	Dace 549	549	STRATAGOLD CORPORATION - 100%	2019-05-24
YE92490	Quartz	Dace 550	550	STRATAGOLD CORPORATION - 100%	2019-05-24
YE92491	Quartz	Dace 551	551	STRATAGOLD CORPORATION - 100%	2019-05-24
YE92492	Quartz	Dace 552	552	STRATAGOLD CORPORATION - 100%	2019-05-24
YE92493	Quartz	Dace 553	553	STRATAGOLD CORPORATION - 100%	2019-05-24
YE92494	Quartz	Dace 554	554	STRATAGOLD CORPORATION - 100%	2019-05-24
YE92495	Quartz	Dace 555	555	STRATAGOLD CORPORATION - 100%	2019-05-24
YE92496	Quartz	Dace 556	556	STRATAGOLD CORPORATION - 100%	2019-05-24
YE92497	Quartz	Dace 557	557	STRATAGOLD CORPORATION - 100%	2019-05-24
YE92498	Quartz	Dace 558	558	STRATAGOLD CORPORATION - 100%	2019-05-24
YE92499	Quartz	Dace 559	559	STRATAGOLD CORPORATION - 100%	2019-05-24
YE92500	Quartz	Dace 560	560	STRATAGOLD CORPORATION - 100%	2019-05-24
YE92501	Quartz	Dace 561	561	STRATAGOLD CORPORATION - 100%	2019-05-24
YE92502	Quartz	Dace 562	562	STRATAGOLD CORPORATION - 100%	2019-05-24
YE92503	Quartz	Dace 563	563	STRATAGOLD CORPORATION - 100%	2019-05-24
YE92504	Quartz	Dace 564	564	STRATAGOLD CORPORATION - 100%	2019-05-24
YE92505	Quartz	Dace 565	565	STRATAGOLD CORPORATION - 100%	2019-05-24
YE92506	Quartz	Dace 566	566	STRATAGOLD CORPORATION - 100%	2019-05-24
YE92507	Quartz	Dace 567	567	STRATAGOLD CORPORATION - 100%	2019-05-24
YE92508	Quartz	Dace 568	568	STRATAGOLD CORPORATION - 100%	2019-05-24
YE92509	Quartz	Dace 569	569	STRATAGOLD CORPORATION - 100%	2019-05-24
YE92510	Quartz	Dace 570	570	STRATAGOLD CORPORATION - 100%	2019-05-24
YE92511	Quartz	Dace 571	571	STRATAGOLD CORPORATION - 100%	2019-05-24
YE92512	Quartz	Dace 572	572	STRATAGOLD CORPORATION - 100%	2019-05-24

NO NAME YMEP REPORT 2019

YE92513	Quartz	Dace 573	573	STRATAGOLD CORPORATION - 100%	2019-05-24
YE92514	Quartz	Dace 574	574	STRATAGOLD CORPORATION - 100%	2019-05-24
YE92515	Quartz	Dace 575	575	STRATAGOLD CORPORATION - 100%	2019-05-24
YE92516	Quartz	Dace 576	576	STRATAGOLD CORPORATION - 100%	2019-05-24
YE92517	Quartz	Dace 577	577	STRATAGOLD CORPORATION - 100%	2019-05-24
YE92518	Quartz	Dace 578	578	STRATAGOLD CORPORATION - 100%	2019-05-24
YE92519	Quartz	Dace 579	579	STRATAGOLD CORPORATION - 100%	2019-05-24
YE92520	Quartz	Dace 580	580	STRATAGOLD CORPORATION - 100%	2019-05-24
YE92521	Quartz	Dace 581	581	STRATAGOLD CORPORATION - 100%	2019-05-24
YE92522	Quartz	Dace 582	582	STRATAGOLD CORPORATION - 100%	2019-05-24
YE92523	Quartz	Dace 583	583	STRATAGOLD CORPORATION - 100%	2019-05-24
YE92524	Quartz	Dace 584	584	STRATAGOLD CORPORATION - 100%	2019-05-24
YE92525	Quartz	Dace 585	585	STRATAGOLD CORPORATION - 100%	2019-05-24
YE92526	Quartz	Dace 586	586	STRATAGOLD CORPORATION - 100%	2019-05-24
YE92527	Quartz	Dace 587	587	STRATAGOLD CORPORATION - 100%	2019-05-24
YE92528	Quartz	Dace 588	588	STRATAGOLD CORPORATION - 100%	2019-05-24
YE92529	Quartz	Dace 589	589	STRATAGOLD CORPORATION - 100%	2019-05-24
YE92530	Quartz	Dace 590	590	STRATAGOLD CORPORATION - 100%	2019-05-24
YE92531	Quartz	Dace 591	591	STRATAGOLD CORPORATION - 100%	2019-05-24
YE92532	Quartz	Dace 592	592	STRATAGOLD CORPORATION - 100%	2019-05-24
YE92533	Quartz	Dace 593	593	STRATAGOLD CORPORATION - 100%	2019-05-24
YE92534	Quartz	Dace 594	594	STRATAGOLD CORPORATION - 100%	2019-05-24
YE92535	Quartz	Dace 595	595	STRATAGOLD CORPORATION - 100%	2019-05-24
YE92536	Quartz	Dace 596	596	STRATAGOLD CORPORATION - 100%	2019-05-24
YE92537	Quartz	Dace 597	597	STRATAGOLD CORPORATION - 100%	2019-05-24
YE92538	Quartz	Dace 598	598	STRATAGOLD CORPORATION - 100%	2019-05-24
YE92539	Quartz	Dace 599	599	STRATAGOLD CORPORATION - 100%	2019-05-24
YE92540	Quartz	Dace 600	600	STRATAGOLD CORPORATION - 100%	2019-05-24
YE92541	Quartz	Dace 601	601	STRATAGOLD CORPORATION - 100%	2019-05-24
YE92542	Quartz	Dace 602	602	STRATAGOLD CORPORATION - 100%	2019-05-24
YE92543	Quartz	Dace 603	603	STRATAGOLD CORPORATION - 100%	2019-05-24
YE92544	Quartz	Dace 604	604	STRATAGOLD CORPORATION - 100%	2019-05-24
YE92545	Quartz	Dace 605	605	STRATAGOLD CORPORATION - 100%	2019-05-24
YE92546	Quartz	Dace 606	606	STRATAGOLD CORPORATION - 100%	2019-05-24
YE92547	Quartz	Dace 607	607	STRATAGOLD CORPORATION - 100%	2019-05-24
YE92548	Quartz	Dace 608	608	STRATAGOLD CORPORATION - 100%	2019-05-24
YE92549	Quartz	Dace 609	609	STRATAGOLD CORPORATION - 100%	2019-05-24
YE92550	Quartz	Dace 610	610	STRATAGOLD CORPORATION - 100%	2019-05-24
YE92551	Quartz	Dace 611	611	STRATAGOLD CORPORATION - 100%	2019-05-24
YE92552	Quartz	Dace 612	612	STRATAGOLD CORPORATION - 100%	2019-05-24
YE92553	Quartz	Dace 613	613	STRATAGOLD CORPORATION - 100%	2019-05-24
YE92554	Quartz	Dace 614	614	STRATAGOLD CORPORATION - 100%	2019-05-24
YE92555	Quartz	Dace 615	615	STRATAGOLD CORPORATION - 100%	2019-05-24

NO NAME YMEP REPORT 2019

YE92556	Quartz	Dace 616	616	STRATAGOLD CORPORATION - 100%	2019-05-24
YE92557	Quartz	Dace 617	617	STRATAGOLD CORPORATION - 100%	2019-05-24
YE92558	Quartz	Dace 618	618	STRATAGOLD CORPORATION - 100%	2019-05-24
YE92559	Quartz	Dace 619	619	STRATAGOLD CORPORATION - 100%	2019-05-24
YE92560	Quartz	Dace 620	620	STRATAGOLD CORPORATION - 100%	2019-05-24
YE92561	Quartz	Dace 621	621	STRATAGOLD CORPORATION - 100%	2019-05-24
YE92562	Quartz	Dace 622	622	STRATAGOLD CORPORATION - 100%	2019-05-24
YE92563	Quartz	Dace 623	623	STRATAGOLD CORPORATION - 100%	2019-05-24
YE92564	Quartz	Dace 624	624	STRATAGOLD CORPORATION - 100%	2019-05-24
YE92565	Quartz	Dace 625	625	STRATAGOLD CORPORATION - 100%	2019-05-24
YE92566	Quartz	Dace 626	626	STRATAGOLD CORPORATION - 100%	2019-05-24
YE92567	Quartz	Dace 627	627	STRATAGOLD CORPORATION - 100%	2019-05-24
YE92568	Quartz	Dace 628	628	STRATAGOLD CORPORATION - 100%	2019-05-24
YE92569	Quartz	Dace 629	629	STRATAGOLD CORPORATION - 100%	2019-05-24
YE92570	Quartz	Dace 630	630	STRATAGOLD CORPORATION - 100%	2019-05-24
YE92571	Quartz	Dace 631	631	STRATAGOLD CORPORATION - 100%	2019-05-24
YE92572	Quartz	Dace 632	632	STRATAGOLD CORPORATION - 100%	2019-05-24
YE92573	Quartz	Dace 633	633	STRATAGOLD CORPORATION - 100%	2019-05-24
YE92574	Quartz	Dace 634	634	STRATAGOLD CORPORATION - 100%	2019-05-24
YE92575	Quartz	Dace 635	635	STRATAGOLD CORPORATION - 100%	2019-05-24
YE92576	Quartz	Dace 636	636	STRATAGOLD CORPORATION - 100%	2019-05-24
YE92577	Quartz	Dace 637	637	STRATAGOLD CORPORATION - 100%	2019-05-24
YE92578	Quartz	Dace 638	638	STRATAGOLD CORPORATION - 100%	2019-05-24
YE92579	Quartz	Dace 639	639	STRATAGOLD CORPORATION - 100%	2019-05-24
YE92580	Quartz	Dace 640	640	STRATAGOLD CORPORATION - 100%	2019-05-24
YE92581	Quartz	Dace 641	641	STRATAGOLD CORPORATION - 100%	2019-05-24
YE92582	Quartz	Dace 642	642	STRATAGOLD CORPORATION - 100%	2019-05-24
YE92583	Quartz	Dace 643	643	STRATAGOLD CORPORATION - 100%	2019-05-24
YE92584	Quartz	Dace 644	644	STRATAGOLD CORPORATION - 100%	2019-05-24
YE92585	Quartz	Dace 645	645	STRATAGOLD CORPORATION - 100%	2019-05-24
YE92586	Quartz	Dace 646	646	STRATAGOLD CORPORATION - 100%	2019-05-24
YE92587	Quartz	Dace 647	647	STRATAGOLD CORPORATION - 100%	2019-05-24
YE92588	Quartz	Dace 648	648	STRATAGOLD CORPORATION - 100%	2019-05-24
YE92589	Quartz	Dace 649	649	STRATAGOLD CORPORATION - 100%	2019-05-24
YE92590	Quartz	Dace 650	650	STRATAGOLD CORPORATION - 100%	2019-05-24
YE92591	Quartz	Dace 651	651	STRATAGOLD CORPORATION - 100%	2019-05-24
YE92592	Quartz	Dace 652	652	STRATAGOLD CORPORATION - 100%	2019-05-24
YE92593	Quartz	Dace 653	653	STRATAGOLD CORPORATION - 100%	2019-05-24
YE92594	Quartz	Dace 654	654	STRATAGOLD CORPORATION - 100%	2019-05-24
YE92595	Quartz	Dace 655	655	STRATAGOLD CORPORATION - 100%	2019-05-24
YE92596	Quartz	Dace 656	656	STRATAGOLD CORPORATION - 100%	2019-05-24
YE92597	Quartz	Dace 657	657	STRATAGOLD CORPORATION - 100%	2019-05-24
YE92598	Quartz	Dace 658	658	STRATAGOLD CORPORATION - 100%	2019-05-24

NO NAME YMEP REPORT 2019

YE92599	Quartz	Dace 659	659	STRATAGOLD CORPORATION - 100%	2019-05-24
YE92600	Quartz	Dace 660	660	STRATAGOLD CORPORATION - 100%	2019-05-24
YE92601	Quartz	Dace 661	661	STRATAGOLD CORPORATION - 100%	2019-05-24
YE92602	Quartz	Dace 662	662	STRATAGOLD CORPORATION - 100%	2019-05-24
YE92603	Quartz	Dace 663	663	STRATAGOLD CORPORATION - 100%	2019-05-24
YE92604	Quartz	Dace 664	664	STRATAGOLD CORPORATION - 100%	2019-05-24
YE92605	Quartz	Dace 665	665	STRATAGOLD CORPORATION - 100%	2019-05-24
YE92606	Quartz	Dace 666	666	STRATAGOLD CORPORATION - 100%	2019-05-24
YE92607	Quartz	Dace 667	667	STRATAGOLD CORPORATION - 100%	2019-05-24
YE92608	Quartz	Dace 668	668	STRATAGOLD CORPORATION - 100%	2019-05-24
YE92609	Quartz	Dace 669	669	STRATAGOLD CORPORATION - 100%	2019-05-24
YE92610	Quartz	Dace 670	670	STRATAGOLD CORPORATION - 100%	2019-05-24
YE92611	Quartz	Dace 671	671	STRATAGOLD CORPORATION - 100%	2019-05-24
YE92612	Quartz	Dace 672	672	STRATAGOLD CORPORATION - 100%	2019-05-24
YE92613	Quartz	Dace 673	673	STRATAGOLD CORPORATION - 100%	2019-05-24
YE92614	Quartz	Dace 674	674	STRATAGOLD CORPORATION - 100%	2019-05-24
YE92615	Quartz	Dace 675	675	STRATAGOLD CORPORATION - 100%	2019-05-24
YE92616	Quartz	Dace 676	676	STRATAGOLD CORPORATION - 100%	2019-05-24
YE92617	Quartz	Dace 677	677	STRATAGOLD CORPORATION - 100%	2019-05-24
YE92618	Quartz	Dace 678	678	STRATAGOLD CORPORATION - 100%	2019-05-24
YE92619	Quartz	Dace 679	679	STRATAGOLD CORPORATION - 100%	2019-05-24
YE92620	Quartz	Dace 680	680	STRATAGOLD CORPORATION - 100%	2019-05-24
YE92621	Quartz	Dace 681	681	STRATAGOLD CORPORATION - 100%	2019-05-24
YE92622	Quartz	Dace 682	682	STRATAGOLD CORPORATION - 100%	2019-05-24
YE92623	Quartz	Dace 683	683	STRATAGOLD CORPORATION - 100%	2019-05-24
YE92624	Quartz	Dace 684	684	STRATAGOLD CORPORATION - 100%	2019-05-24
YE92625	Quartz	Dace 685	685	STRATAGOLD CORPORATION - 100%	2019-05-24
YE92626	Quartz	Dace 686	686	STRATAGOLD CORPORATION - 100%	2019-05-24
YE92627	Quartz	Dace 687	687	STRATAGOLD CORPORATION - 100%	2019-05-24
YE92628	Quartz	Dace 688	688	STRATAGOLD CORPORATION - 100%	2019-05-24
YE92629	Quartz	Dace 689	689	STRATAGOLD CORPORATION - 100%	2019-05-24
YE92630	Quartz	Dace 690	690	STRATAGOLD CORPORATION - 100%	2019-05-24
YE92631	Quartz	Dace 691	691	STRATAGOLD CORPORATION - 100%	2019-05-24
YE92632	Quartz	Dace 692	692	STRATAGOLD CORPORATION - 100%	2019-05-24
YE92633	Quartz	Dace 693	693	STRATAGOLD CORPORATION - 100%	2019-05-24
YE92634	Quartz	Dace 694	694	STRATAGOLD CORPORATION - 100%	2019-05-24
YE92635	Quartz	Dace 695	695	STRATAGOLD CORPORATION - 100%	2019-05-24
YE92636	Quartz	Dace 696	696	STRATAGOLD CORPORATION - 100%	2019-05-24
YE92637	Quartz	Dace 697	697	STRATAGOLD CORPORATION - 100%	2019-05-24
YE92638	Quartz	Dace 698	698	STRATAGOLD CORPORATION - 100%	2019-05-24
YE92639	Quartz	Dace 699	699	STRATAGOLD CORPORATION - 100%	2019-05-24
YE92640	Quartz	Dace 700	700	STRATAGOLD CORPORATION - 100%	2019-05-24
YE92641	Quartz	Dace 701	701	STRATAGOLD CORPORATION - 100%	2019-05-24

NO NAME YMEP REPORT 2019

YE92642	Quartz	Dace 702	702	STRATAGOLD CORPORATION - 100%	2019-05-24
YE92643	Quartz	Dace 703	703	STRATAGOLD CORPORATION - 100%	2019-05-24
YE92644	Quartz	Dace 704	704	STRATAGOLD CORPORATION - 100%	2019-05-24
YE92645	Quartz	Dace 705	705	STRATAGOLD CORPORATION - 100%	2019-05-24
YE92646	Quartz	Dace 706	706	STRATAGOLD CORPORATION - 100%	2019-05-24
YE92647	Quartz	Dace 707	707	STRATAGOLD CORPORATION - 100%	2019-05-24
YE92648	Quartz	Dace 708	708	STRATAGOLD CORPORATION - 100%	2019-05-24
YE92649	Quartz	Dace 709	709	STRATAGOLD CORPORATION - 100%	2019-05-24
YE92650	Quartz	Dace 710	710	STRATAGOLD CORPORATION - 100%	2019-05-24
YE92651	Quartz	Dace 711	711	STRATAGOLD CORPORATION - 100%	2019-05-24
YE92652	Quartz	Dace 712	712	STRATAGOLD CORPORATION - 100%	2019-05-24
YE92653	Quartz	Dace 713	713	STRATAGOLD CORPORATION - 100%	2019-05-24
YE92654	Quartz	Dace 714	714	STRATAGOLD CORPORATION - 100%	2019-05-24
YE92655	Quartz	Dace 715	715	STRATAGOLD CORPORATION - 100%	2019-05-24
YE92656	Quartz	Dace 716	716	STRATAGOLD CORPORATION - 100%	2019-05-24
YE92657	Quartz	Dace 717	717	STRATAGOLD CORPORATION - 100%	2019-05-24
YE92658	Quartz	Dace 718	718	STRATAGOLD CORPORATION - 100%	2019-05-24
YE92659	Quartz	Dace 719	719	STRATAGOLD CORPORATION - 100%	2019-05-24
YE92660	Quartz	Dace 720	720	STRATAGOLD CORPORATION - 100%	2019-05-24
YE92661	Quartz	Dace 721	721	STRATAGOLD CORPORATION - 100%	2019-05-24
YE92662	Quartz	Dace 722	722	STRATAGOLD CORPORATION - 100%	2019-05-24
YE92663	Quartz	Dace 723	723	STRATAGOLD CORPORATION - 100%	2019-05-24
YE92664	Quartz	Dace 724	724	STRATAGOLD CORPORATION - 100%	2019-05-24
YE92665	Quartz	Dace 725	725	STRATAGOLD CORPORATION - 100%	2019-05-24
YE92666	Quartz	Dace 726	726	STRATAGOLD CORPORATION - 100%	2019-05-24
YE92667	Quartz	Dace 727	727	STRATAGOLD CORPORATION - 100%	2019-05-24
YE92668	Quartz	Dace 728	728	STRATAGOLD CORPORATION - 100%	2019-05-24
YE92669	Quartz	Dace 729	729	STRATAGOLD CORPORATION - 100%	2019-05-24
YE92670	Quartz	Dace 730	730	STRATAGOLD CORPORATION - 100%	2019-05-24
YE92671	Quartz	Dace 731	731	STRATAGOLD CORPORATION - 100%	2019-05-24
YE92672	Quartz	Dace 732	732	STRATAGOLD CORPORATION - 100%	2019-05-24
YE92673	Quartz	Dace 733	733	STRATAGOLD CORPORATION - 100%	2019-05-24
YE92674	Quartz	Dace 734	734	STRATAGOLD CORPORATION - 100%	2019-05-24
YE92675	Quartz	Dace 735	735	STRATAGOLD CORPORATION - 100%	2019-05-24
YE92676	Quartz	Dace 736	736	STRATAGOLD CORPORATION - 100%	2019-05-24
YE92677	Quartz	Dace 737	737	STRATAGOLD CORPORATION - 100%	2019-05-24
YE92678	Quartz	Dace 738	738	STRATAGOLD CORPORATION - 100%	2019-05-24
YE92679	Quartz	Dace 739	739	STRATAGOLD CORPORATION - 100%	2019-05-24
YE92680	Quartz	Dace 740	740	STRATAGOLD CORPORATION - 100%	2019-05-24
YE92681	Quartz	Dace 741	741	STRATAGOLD CORPORATION - 100%	2019-05-24
YE92682	Quartz	Dace 742	742	STRATAGOLD CORPORATION - 100%	2019-05-24
YE92683	Quartz	Dace 743	743	STRATAGOLD CORPORATION - 100%	2019-05-24
YE92684	Quartz	Dace 744	744	STRATAGOLD CORPORATION - 100%	2019-05-24

NO NAME YMEP REPORT 2019

YE92685	Quartz	Dace 745	745	STRATAGOLD CORPORATION - 100%	2019-05-24
YE92686	Quartz	Dace 746	746	STRATAGOLD CORPORATION - 100%	2019-05-24
YE92687	Quartz	Dace 747	747	STRATAGOLD CORPORATION - 100%	2019-05-24
YE92688	Quartz	Dace 748	748	STRATAGOLD CORPORATION - 100%	2019-05-24
YE92689	Quartz	Dace 749	749	STRATAGOLD CORPORATION - 100%	2019-05-24
YE92690	Quartz	Dace 750	750	STRATAGOLD CORPORATION - 100%	2019-05-24
YE92691	Quartz	Dace 751	751	STRATAGOLD CORPORATION - 100%	2019-05-24
YE92692	Quartz	Dace 752	752	STRATAGOLD CORPORATION - 100%	2019-05-24
YE92693	Quartz	Dace 753	753	STRATAGOLD CORPORATION - 100%	2019-05-24
YE92694	Quartz	Dace 754	754	STRATAGOLD CORPORATION - 100%	2019-05-24
YE92695	Quartz	Dace 755	755	STRATAGOLD CORPORATION - 100%	2019-05-24
YE92696	Quartz	Dace 756	756	STRATAGOLD CORPORATION - 100%	2019-05-24
YE92697	Quartz	Dace 757	757	STRATAGOLD CORPORATION - 100%	2019-05-24
YE92698	Quartz	Dace 758	758	STRATAGOLD CORPORATION - 100%	2019-05-24
YE92699	Quartz	Dace 759	759	STRATAGOLD CORPORATION - 100%	2019-05-24
YE92700	Quartz	Dace 760	760	STRATAGOLD CORPORATION - 100%	2019-05-24
YE92701	Quartz	Dace 761	761	STRATAGOLD CORPORATION - 100%	2019-05-24
YE92702	Quartz	Dace 762	762	STRATAGOLD CORPORATION - 100%	2019-05-24
YE92703	Quartz	Dace 763	763	STRATAGOLD CORPORATION - 100%	2019-05-24
YE92704	Quartz	Dace 764	764	STRATAGOLD CORPORATION - 100%	2019-05-24
YE92705	Quartz	Dace 765	765	STRATAGOLD CORPORATION - 100%	2019-05-24
YE92706	Quartz	Dace 766	766	STRATAGOLD CORPORATION - 100%	2019-05-24
YE92707	Quartz	Dace 767	767	STRATAGOLD CORPORATION - 100%	2019-05-24
YE92708	Quartz	Dace 768	768	STRATAGOLD CORPORATION - 100%	2019-05-24
YE92709	Quartz	Dace 769	769	STRATAGOLD CORPORATION - 100%	2019-05-24
YE92710	Quartz	Dace 770	770	STRATAGOLD CORPORATION - 100%	2019-05-24
YE92711	Quartz	Dace 771	771	STRATAGOLD CORPORATION - 100%	2019-05-24
YE92712	Quartz	Dace 772	772	STRATAGOLD CORPORATION - 100%	2019-05-24
YE92713	Quartz	Dace 773	773	STRATAGOLD CORPORATION - 100%	2019-05-24
YE92714	Quartz	Dace 774	774	STRATAGOLD CORPORATION - 100%	2019-05-24
YE92715	Quartz	Dace 775	775	STRATAGOLD CORPORATION - 100%	2019-05-24
YE92716	Quartz	Dace 776	776	STRATAGOLD CORPORATION - 100%	2019-05-24
YE92717	Quartz	Dace 777	777	STRATAGOLD CORPORATION - 100%	2019-05-24
YE92718	Quartz	Dace 778	778	STRATAGOLD CORPORATION - 100%	2019-05-24
YE92719	Quartz	Dace 779	779	STRATAGOLD CORPORATION - 100%	2019-05-24
YE92720	Quartz	Dace 780	780	STRATAGOLD CORPORATION - 100%	2019-05-24
YE92721	Quartz	Dace 781	781	STRATAGOLD CORPORATION - 100%	2019-05-24
YE92722	Quartz	Dace 782	782	STRATAGOLD CORPORATION - 100%	2019-05-24
YE92723	Quartz	Dace 783	783	STRATAGOLD CORPORATION - 100%	2019-05-24
YE92724	Quartz	Dace 784	784	STRATAGOLD CORPORATION - 100%	2019-05-24
YE92725	Quartz	Dace 785	785	STRATAGOLD CORPORATION - 100%	2019-05-24
YE92726	Quartz	Dace 786	786	STRATAGOLD CORPORATION - 100%	2019-05-24
YE92727	Quartz	Dace 787	787	STRATAGOLD CORPORATION - 100%	2019-05-24

NO NAME YMEP REPORT 2019

YE92728	Quartz	Dace 788	788	STRATAGOLD CORPORATION - 100%	2019-05-24
YE92729	Quartz	Dace 789	789	STRATAGOLD CORPORATION - 100%	2019-05-24
YE92730	Quartz	Dace 790	790	STRATAGOLD CORPORATION - 100%	2019-05-24
YE92731	Quartz	Dace 791	791	STRATAGOLD CORPORATION - 100%	2019-05-24
YE92732	Quartz	Dace 792	792	STRATAGOLD CORPORATION - 100%	2019-05-24
YE92733	Quartz	Dace 793	793	STRATAGOLD CORPORATION - 100%	2019-05-24
YE92734	Quartz	Dace 794	794	STRATAGOLD CORPORATION - 100%	2019-05-24
YE92735	Quartz	Dace 795	795	STRATAGOLD CORPORATION - 100%	2019-05-24
YE92736	Quartz	Dace 796	796	STRATAGOLD CORPORATION - 100%	2019-05-24
YE92737	Quartz	Dace 797	797	STRATAGOLD CORPORATION - 100%	2019-05-24
YE92738	Quartz	Dace 798	798	STRATAGOLD CORPORATION - 100%	2019-05-24
YE92739	Quartz	Dace 799	799	STRATAGOLD CORPORATION - 100%	2019-05-24
YE92740	Quartz	Dace 800	800	STRATAGOLD CORPORATION - 100%	2019-05-24
YE92741	Quartz	Dace 801	801	STRATAGOLD CORPORATION - 100%	2019-05-24
YE92742	Quartz	Dace 802	802	STRATAGOLD CORPORATION - 100%	2019-05-24
YE92743	Quartz	Dace 803	803	STRATAGOLD CORPORATION - 100%	2019-05-24
YE92744	Quartz	Dace 804	804	STRATAGOLD CORPORATION - 100%	2019-05-24
YE92745	Quartz	Dace 805	805	STRATAGOLD CORPORATION - 100%	2019-05-24
YE92746	Quartz	Dace 806	806	STRATAGOLD CORPORATION - 100%	2019-05-24
YE92747	Quartz	Dace 807	807	STRATAGOLD CORPORATION - 100%	2019-05-24
YE92748	Quartz	Dace 808	808	STRATAGOLD CORPORATION - 100%	2019-05-24
YE92749	Quartz	Dace 809	809	STRATAGOLD CORPORATION - 100%	2019-05-24
YE92750	Quartz	Dace 810	810	STRATAGOLD CORPORATION - 100%	2019-05-24
YE92751	Quartz	Dace 811	811	STRATAGOLD CORPORATION - 100%	2019-05-24
YE92752	Quartz	Dace 812	812	STRATAGOLD CORPORATION - 100%	2019-05-24
YE92753	Quartz	Dace 813	813	STRATAGOLD CORPORATION - 100%	2019-05-24
YE92754	Quartz	Dace 814	814	STRATAGOLD CORPORATION - 100%	2019-05-24
YE92755	Quartz	Dace 815	815	STRATAGOLD CORPORATION - 100%	2019-05-24
YE92756	Quartz	Dace 816	816	STRATAGOLD CORPORATION - 100%	2019-05-24
YE92757	Quartz	Dace 817	817	STRATAGOLD CORPORATION - 100%	2019-05-24
YE92758	Quartz	Dace 818	818	STRATAGOLD CORPORATION - 100%	2019-05-24
YE92759	Quartz	Dace 819	819	STRATAGOLD CORPORATION - 100%	2019-05-24
YE92760	Quartz	Dace 820	820	STRATAGOLD CORPORATION - 100%	2019-05-24
YE92761	Quartz	Dace 821	821	STRATAGOLD CORPORATION - 100%	2019-05-24
YE92762	Quartz	Dace 822	822	STRATAGOLD CORPORATION - 100%	2019-05-24
YE92763	Quartz	Dace 823	823	STRATAGOLD CORPORATION - 100%	2019-05-24
YE92764	Quartz	Dace 824	824	STRATAGOLD CORPORATION - 100%	2019-05-24
YE92765	Quartz	Dace 825	825	STRATAGOLD CORPORATION - 100%	2019-05-24
YE92766	Quartz	Dace 826	826	STRATAGOLD CORPORATION - 100%	2019-05-24
YE92767	Quartz	Dace 827	827	STRATAGOLD CORPORATION - 100%	2019-05-24
YE92768	Quartz	Dace 828	828	STRATAGOLD CORPORATION - 100%	2019-05-24
YE92769	Quartz	Dace 829	829	STRATAGOLD CORPORATION - 100%	2019-05-24
YE92770	Quartz	Dace 830	830	STRATAGOLD CORPORATION - 100%	2019-05-24

NO NAME YMEP REPORT 2019

YE92771	Quartz	Dace 831	831	STRATAGOLD CORPORATION - 100%	2019-05-24
YE92772	Quartz	Dace 832	832	STRATAGOLD CORPORATION - 100%	2019-05-24
YE92773	Quartz	Dace 833	833	STRATAGOLD CORPORATION - 100%	2019-05-24

B. Access

The Hawk prospect is located 30 kilometers north of Eagle Gold and accessible via helicopter from Victoria Gold's Bluto Camp on the Dublin Gulch claims. A small pup tent camp was set up on the claims to support the soil program. Access to the ridges in Hawk for mapping and soil sampling was via helicopter or hiking from the pup tent camp.

C. Target Area

i) Property History

The Dace and Steamboat MINFILE occurrences are reported within the vicinity but the target area has seen limited exploration activity.

The Dace occurrence was investigated in the 1960s and covers a transported limonite gossan which is anomalous in lead and zinc (MINFILE# 106D035). The occurrence area is located northwest of Steamboat Mountain approximately 25 km northwest of McQuesten Lake. The area was regionally mapped by L. Green of the Geological Survey of Canada in 1961 as part of a helicopter-supported party known as Operation Ogilvie. Although the area has not yet been remapped by the Yukon Geological Survey, C. Roots of the Geological Survey of Canada under contract with the Exploration and Geological Services Division (now part of the Yukon Geological Survey) remapped topographic map sheet 105M located directly to the south in the mid-1990's. In 2003 Gordey and Makepeace released a geological compilation of the Yukon which covered this area.

The Steamboat occurrence is located on the eastern branch of an unnamed creek located on the western side of Steamboat Mountain, approximately 23km northwest of McQuesten Lake. It was last explored in 1965 by United Keno Hill Mines (UKHM) following the release of the regional stream sediment sample data collected by the GSC during Operation Keno in 1964. Field notes recorded by UKHM noted large transported limonite gossans in the vicinity that appear to be derived from metal-rich shales. Grid soil sampling and prospecting by UKHM failed to reproduce the anomaly or uncover mineralization. No drilling or other documented work has been done in the vicinity (MINFILE# 106D034).

StrataGold Corp. staked the Hawk area (formerly referred to as No Name) in May of 2018 in preparation for a large scale ridge and spur soil sampling program and smaller prospecting program.

ii) Regional Geology

The Hawk area resides within Mississippian Keno Hill Quartzite, Devonian Earn Group, and upper Proterozoic Hyland Group rocks, which are part of the western Selwyn Basin, an epicratonic basin developed in a divergent margin setting established as the result of neo-Proterozoic rifting along the North American margin (Ross, 1991; Colpron et al., 2002). Jurassic convergence between the North American and Farallon plates led to the collision of outboard terranes with the continental margin, which resulted in northward thrusting and low-grade metamorphism of Selwyn Basin strata (Monger, 1993). In the Mayo region, the Jurassic-Cretaceous Dawson, Tombstone and Robert Service thrusts (Murphy and Héon, 1995), juxtapose Hyland Group rocks against Mississippian shelf units and Devonian to Jurassic clastic units. With waning deformation across the orogen by the mid-Cretaceous, emplacement of a series of northwardly-younging, orogen-parallel, felsic to intermediate plutonic suites occurred between 112 and 90 Ma (Mortensen, 2000). The Tombstone Plutonic Suite (TPS) is the most cratonward and youngest of the mid-Cretaceous plutonic belts emplaced into deformed Selwyn Basin strata. It extends in excess of 500 kilometers in an east-west direction, from the Yukon-Northwest Territory border to Dawson City, where it is truncated by the Tintina Fault Zone, a Cretaceous-Tertiary strike-slip fault with an estimated 450 kilometers of displacement. The TPS intrusions are typically <5 km in diameter and occur as composite plutons or as isolated pluton and dyke clusters. Compositionally they are predominantly monzogranite to quartz monzonite, with smaller volumes of later monzonite to quartz monzodiorite (Mortensen et al., 2000; Hart et al., 2004). They are weakly reduced to weakly oxidized and metaluminous to weakly peraluminous. Minor porphyritic, aplitic and calc-alkaline lamprophyre dykes (Mair et al., 2003) cross-cut and intrude the main stocks.

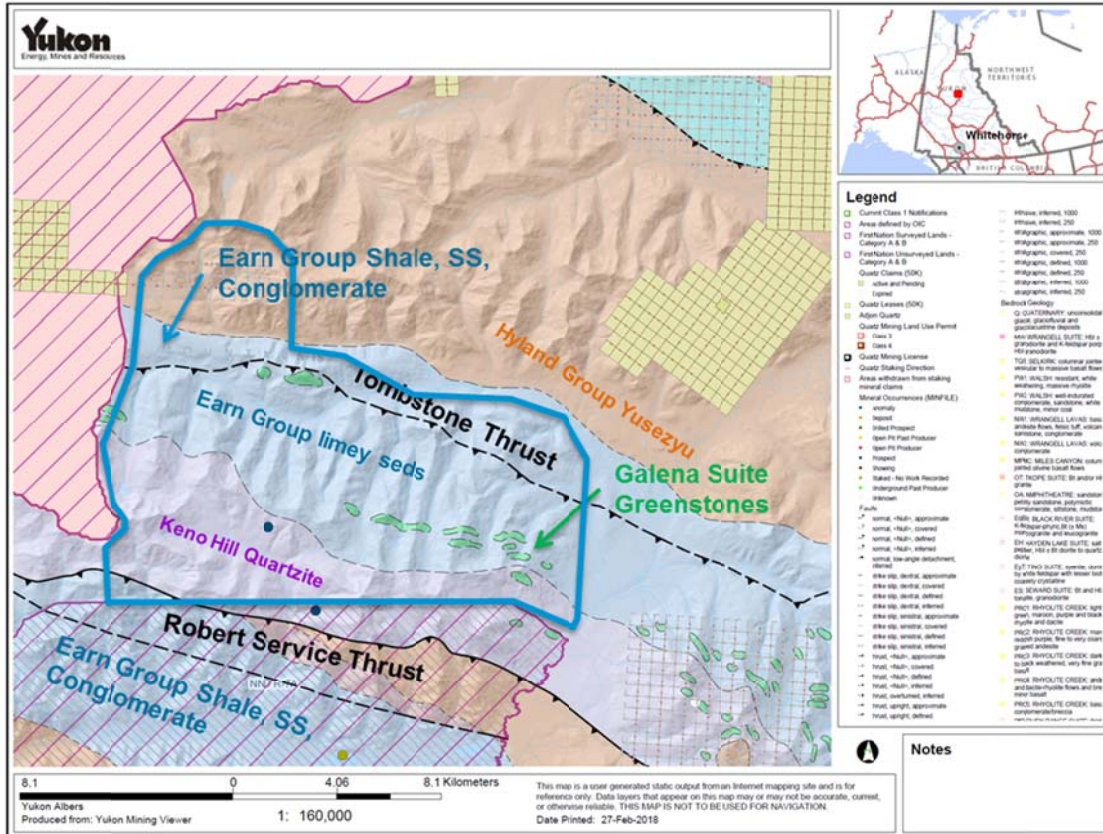


Figure 3- Property geology map of the Hawk area from regional mapping available on YGS Mapmaker.

iii) Property Geology

The Hawk area is located North West of Steamboat Mountain in the Ogilvie Range. The area is mapped as underlain by Mississippian Keno Hill Quartzite, Devonian Earn Group, and Proterozoic to Middle Cambrian Hyland Group siliciclastic units of the Yusezyu Formation (Figure 3). The Keno Hill Quartzite unit has been thrust to the northeast by the Robert Service Thrust Fault, onto the younger (Upper Proterozoic to Lower Cambrian) Hyland Group clastic rocks. The Tombstone Thrust Fault occurs to the North of the No Name area. A number of carbonate-like outcrops are not included in the regional mapping and it is likely some of what is mapped as quartzite is Earn group carbonate. The Keno Hill Quartzite and the Earn Group units are intruded by a North West trending package of Triassic Galena Suite greenstone bodies.

The 2018 mapping program focused on prospecting around several of the gossanous areas, following the outcrops upstream. Ridge mapping was limited by poor weather and low cloud ceilings on many days. In general mapping found lots of quartz veined quartzite, some oxidised breccias, coarse grained gabbro, and pyritic shales. Rock-chip samples were assayed and no significant values of gold or silver were found.

NO NAME YMEP REPORT 2019

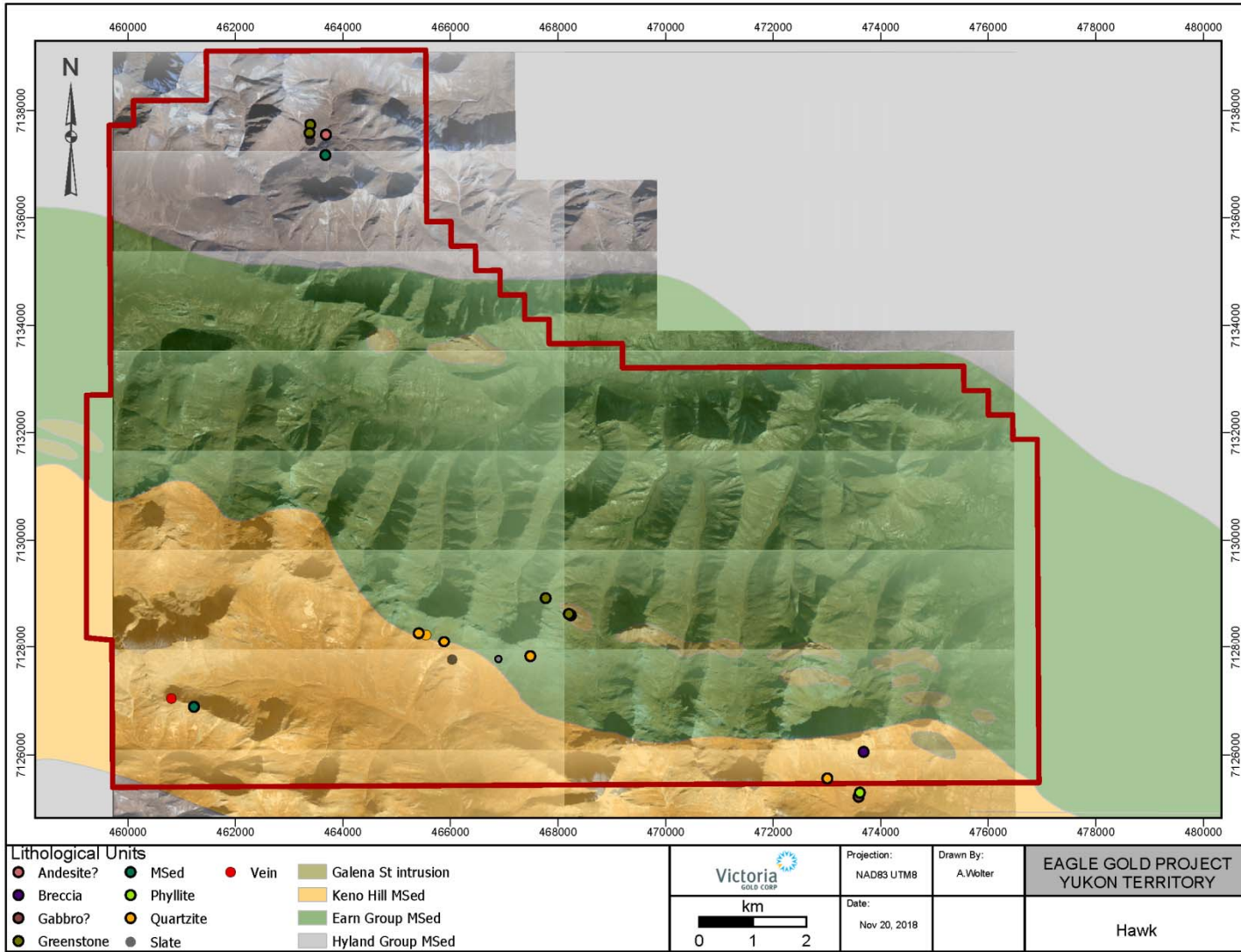


Figure 4- 2018 Hawk Property geology map with 2018 air photos as basemap.

iv) Deposit Type and Mineralization

A number of gossanous outcrops occur in the target area along a 12 kilometer trend with a north westerly orientation. The gossans are anomalous in lead and zinc. RGS data indicates anomalous gold draining from the streams in the target area. The gossans could be similar to ATAC's Ocelot showing located to the east in a similar NW trending thrust fault package. This area is marked by much smaller spring gossan formed by the precipitation of iron oxides containing silver, lead and zinc from solutions traveling along fractures. The gossan is predominately dolomite rubble cemented by iron oxides and is surrounded by buff to orange weathering dolomite and limestone. The 2010 drill program intersected 4.23m of 552 g/t silver, 14.5% lead, and 34.3% zinc. Best results of the 2011 drill program include 15m of 400 g/t silver, 20% lead, and 9% zinc.

In the Yukon-wide airborne magnetic data (200m spaced grid) the Hawk area is located in a magnetic low with no discernible structures at this scale which calls for careful consideration.

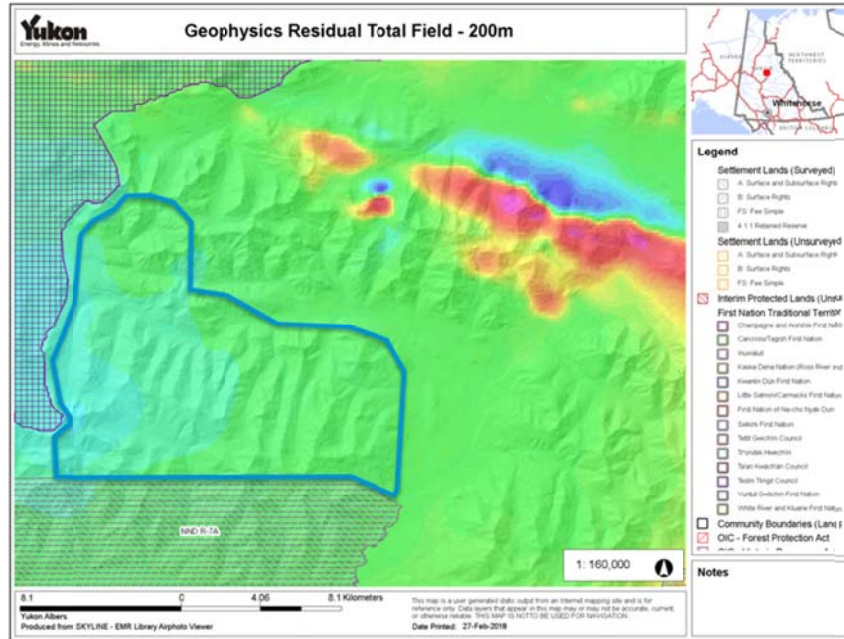


Figure 10- Magnetic Residual Total Field geophysics map.

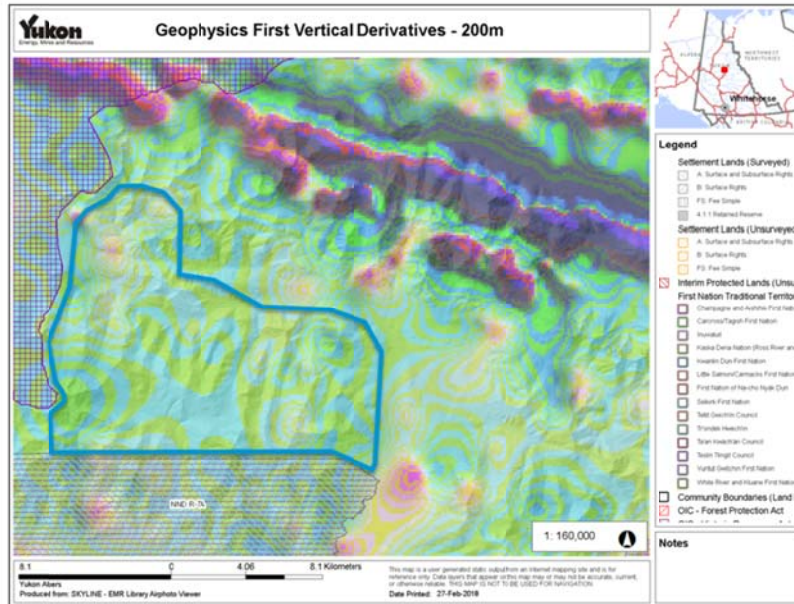


Figure 11- First Vertical Derivative geophysics map.

D. Target Rationale

The Hawk area was targeted due to the intriguing large number of gossanous outcrops that occur along a 12 kilometer north westerly trend. Geochemical data indicate interesting gold and base metal responses in the creeks that drain the area. The area has seen very limited exploration activity with modern exploration methods and lacks detailed geologic mapping.

Based on similar nearby mineral occurrences and their geology and structure there is potential for gold-bearing stratabound, structurally-controlled Carbonate Replacement (Tiger Deposit), Manto Style (Ocelot Showing), or structurally hosted vein-fault (McKay Hill) mineralization. There is a high potential of replacement-style sulphide shales or breccias proximal to the gossanous outcrops which could host gold, silver, and/or base metals.

E. 2018 Exploration Program

A 172 square kilometer claim block consisting of 833 quartz claims was staked in the target area in May 2018 by a contracted crew from Pika Exploration (Figure 2). Subsequently an 11-day soil and prospecting program was conducted in mid to late August. Pika Exploration provided five (5) soil samplers with geologists from Victoria Gold imbedded with the soils crew. Fireweed Helicopters was used to set up the soil camp and move samplers and geologists. Hi resolution orthophotography was flown over the entire property in September by Eagle Mapping.

2,033 soil samples were collected from ridges and spurs covering the entire property (Figure 6), as well as 20 select rock-chip samples (Figure 5).

Sample Method

For the 2018 field program, soil samples were collected from the B horizon where possible. Soil data and location information was recorded using a handheld GPS units. Samples were collected into Kraft paper soil bags with a sample number tags inserted and associated sample numbers written on the bags. Soil samples were sent to the Bureau Veritas prep facility in Whitehorse and dried at 60 degrees C, 100g soil sieved to -80 mesh. They were then shipped to Bureau Veritas' Vancouver Laboratories where they were analyzed using a 15g – 36 element ICP MS, detection limits are shown in .

Rock-chip samples were collected from subcrop, outcrop and float. They were sent to the Bureau Veritas prep facility in Whitehorse, crushed, split and pulverized 250g rock to 200 mesh. The samples were then sent to the Vancouver assay lab and analyzed with 50g lead collection fire assay fusion – AAS Finish, and a 1:1:1 Aqua Regia digestion ICP-MS analysis for 36 elements. ICP detection limits are the same as for the soil samples. Detailed soil and rock assay tables can be found in the Appendix along with multi-element soil maps.

NO NAME YMEP REPORT 2019

Table 2- Soil Sample ICP detection limits.

Ag	0.1 ppm	100 ppm
Al	0.01 %	10 %
As	0.5 ppm	10000 ppm
Au	0.5 ppb	100000 ppb
B*	20 ppm	2000 ppm
Ba	1 ppm	10000 ppm
Bi	0.1 ppm	2000 ppm
Ca	0.01 %	40 %
Cd	0.1 ppm	2000 ppm
Co	0.1 ppm	2000 ppm
Cr	1 ppm	10000 ppm
Cu	0.1 ppm	10000 ppm
Fe	0.01 %	40 %
Ga	1 ppm	1000 ppm
Hg	0.01 ppm	50 ppm
K	0.01 %	10 %
La	1 ppm	10000 ppm
Mg	0.01 %	30 %
Mn	1 ppm	10000 ppm
Mo	0.1 ppm	2000 ppm
Na	0.001 %	5 %
Ni	0.1 ppm	10000 ppm
P	0.001 %	5 %
Pb	0.1 ppm	10000 ppm
S	0.05 %	10 %
Sb	0.1 ppm	2000 ppm
Sc	0.1 ppm	100 ppm
Se	0.5 ppm	100 ppm
Sr	1 ppm	2000 ppm
Te	0.2 ppm	1000 ppm
Th	0.1 ppm	2000 ppm
Ti	0.001 %	5 %
Tl	0.1 ppm	1000 ppm
V	2 ppm	10000 ppm
W	0.1 ppm	100 ppm
Zn	1 ppm	10000 ppm

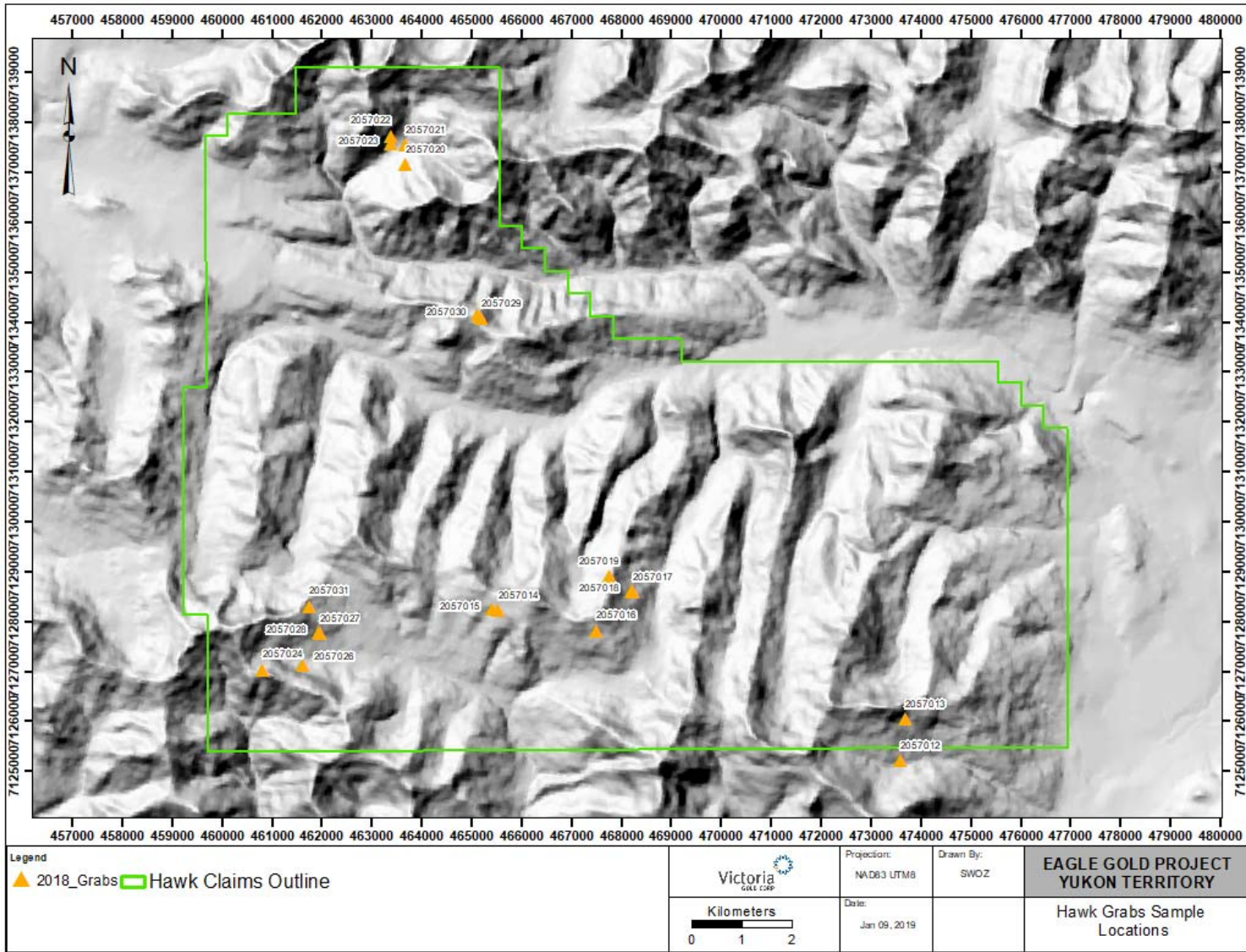


Figure 5- 2018 Rock Sample Locations

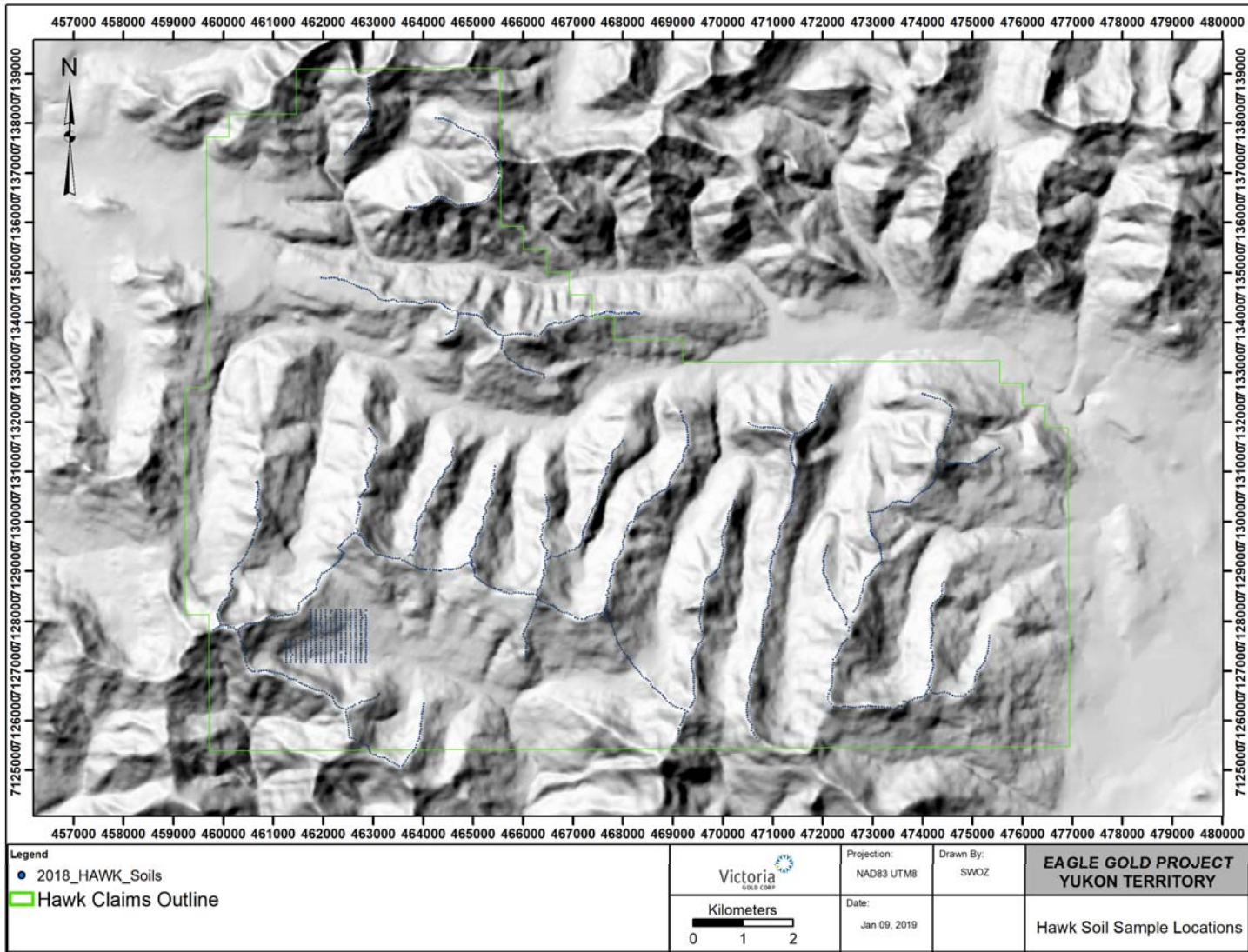


Figure 6- 2018 Soil Sample locations.

Geochemical Results

In rock-chip sampling, anomalous copper values occurred in two gabbro samples (141ppm Cu and 144 ppm Cu), and in two dark green massive greenstone units (230ppm Cu and 348ppm Cu), as well as in an oxidised fault breccia (135ppm Cu). No significant values of gold or silver were found.

The soil program at Hawk focused on 50m spaced ridge and spurs throughout the property as well as a small grid 100m x 50m spaced on the western portion of claims. Very low level values of gold occur with highly anomalous results between 25-71ppb Au. A slight trend can be seen in gold values in a roughly WNW striking orientation over multiple ridges in the Earn Group limey sediment unit. Although elevated gold values also occur in the Keno Hill Quartzite and Hyland Group Metasediments to the south and north, they are not highly anomalous. Copper, antimony, arsenic tellurium, mercury, molybdenum, and thallium (zinc to a lesser extent) all follow the same WNW striking orientation but are quite well confined to the Earn Group sediments. Table 3 shows a statistical overview of the significant elements, and Table 4 shows a correlation matrix between these elements.

Table 3- Soil Sampling Statistics of Significant Elements.

	Au_ppm	Ag_ppm	As_ppm	Bi_ppm	Cu_ppm	Pb_ppm	Sb_ppm	Tl_ppm	Zn_ppm	Hg_ppm	Te_ppm
Mean	0.004036	0.545671	16.16016	0.29609	43.01082	20.5426	1.390138	0.178037	96.97295	0.154179	0.107919
Median	0.0032	0.3	13.6	0.3	29.5	17.8	0.8	0.1	72	0.08	0.1
Mode	0.00025	0.05	13	0.3	22.3	12.3	0.7	0.1	56	0.04	0.1
Standard Deviation	0.003572	0.874448	9.296747	0.187308	47.7327	10.71953	2.675622	0.218708	77.23986	0.238599	0.039575
Sample Variance	1.28E-05	0.764659	86.4295	0.035084	2278.411	114.9084	7.158954	0.047833	5965.996	0.05693	0.001566
Range	0.07055	11.35	108.95	6.65	1329.1	151.5	60.65	3.15	977	3.575	0.5
Minimum	0.00025	0.05	0.25	0.05	4.8	2.2	0.05	0.05	5	0.005	0.1
Maximum	0.0708	11.4	109.2	6.7	1333.9	153.7	60.7	3.2	982	3.58	0.6
95 Percentile	0.01024	2	30.98	0.5	113.14	38.5	4.1	0.54	248	0.55	0.1
90 Percentile	0.0076	1.2	25.1	0.4	83.9	32.38	2.4	0.4	170	0.32	0.1

Table 4- Soil Sample Correlation Matrix of Significant Elements.

	Au_ppm	Ag_ppm	As_ppm	Bi_ppm	Cu_ppm	Pb_ppm	Sb_ppm	Tl_ppm	Zn_ppm	Hg_ppm	Te_ppm
Au_ppm	1	0.401686	0.084519	0.051824	0.568253	0.09684	0.212086	0.260091	0.312187	0.285273	0.326452
Ag_ppm	0.401686	1	0.43996	0.170302	0.411961	0.300689	0.677272	0.585993	0.616494	0.623008	0.424696
As_ppm	0.084519	0.43996	1	0.27521	0.151956	0.498345	0.584805	0.438875	0.249131	0.474702	0.290741
Bi_ppm	0.051824	0.170302	0.27521	1	0.1743	0.404527	0.134852	0.180712	0.144607	0.196868	0.206003
Cu_ppm	0.568253	0.411961	0.151956	0.1743	1	0.242568	0.2573	0.32229	0.54746	0.326718	0.326881
Pb_ppm	0.09684	0.300689	0.498345	0.404527	0.242568	1	0.29115	0.257912	0.241435	0.388554	0.232375
Sb_ppm	0.212086	0.677272	0.584805	0.134852	0.2573	0.29115	1	0.580961	0.468875	0.500723	0.368735
Tl_ppm	0.260091	0.585993	0.438875	0.180712	0.32229	0.257912	0.580961	1	0.560608	0.637352	0.359261
Zn_ppm	0.312187	0.616494	0.249131	0.144607	0.54746	0.241435	0.468875	0.560608	1	0.512797	0.355032
Hg_ppm	0.285273	0.623008	0.474702	0.196868	0.326718	0.388554	0.500723	0.637352	0.512797	1	0.391807
Te_ppm	0.326452	0.424696	0.290741	0.206003	0.326881	0.232375	0.368735	0.359261	0.355032	0.391807	1

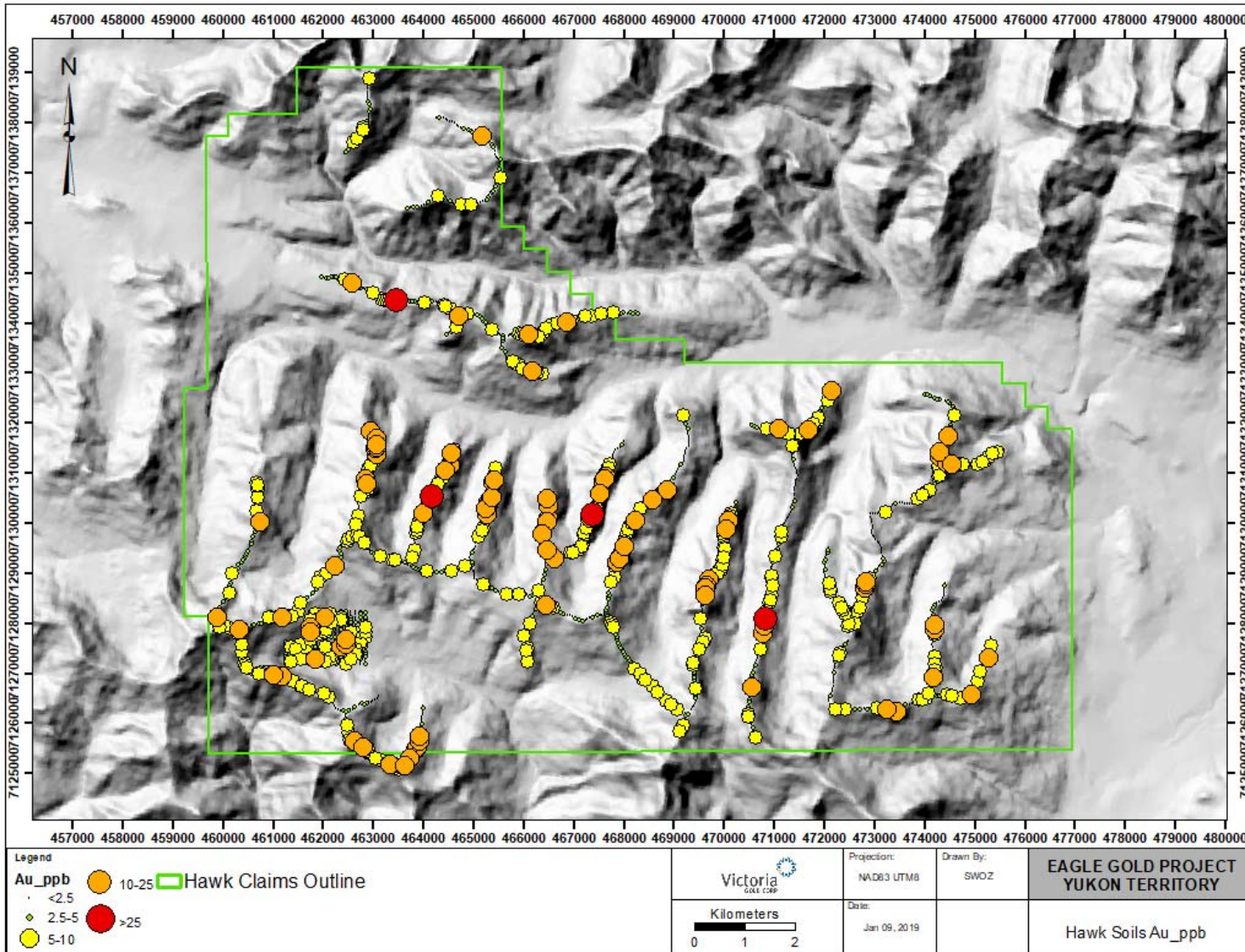


Figure 7- Soil Gold Assays PPB

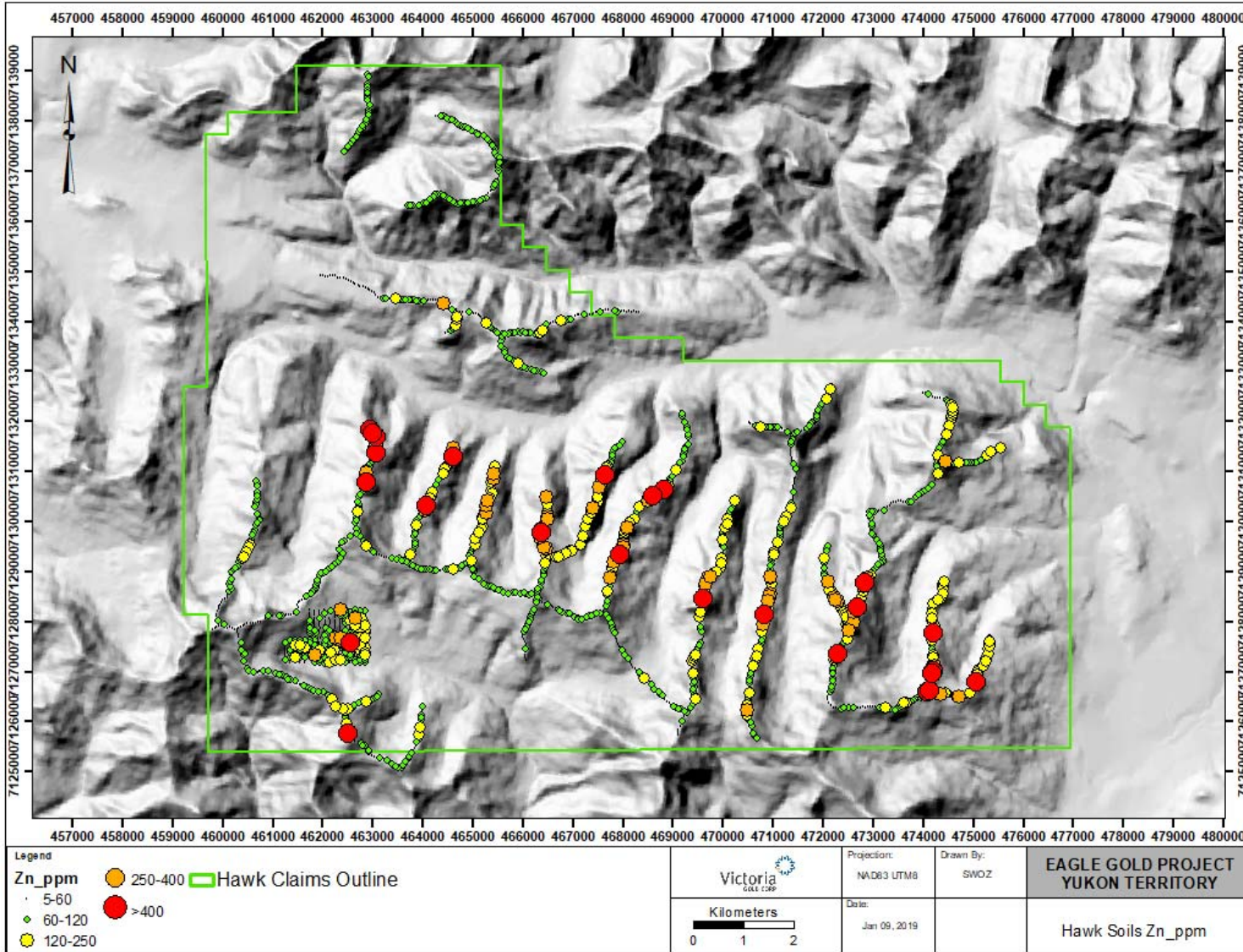


Figure 8- Soil Zinc Assays PPB

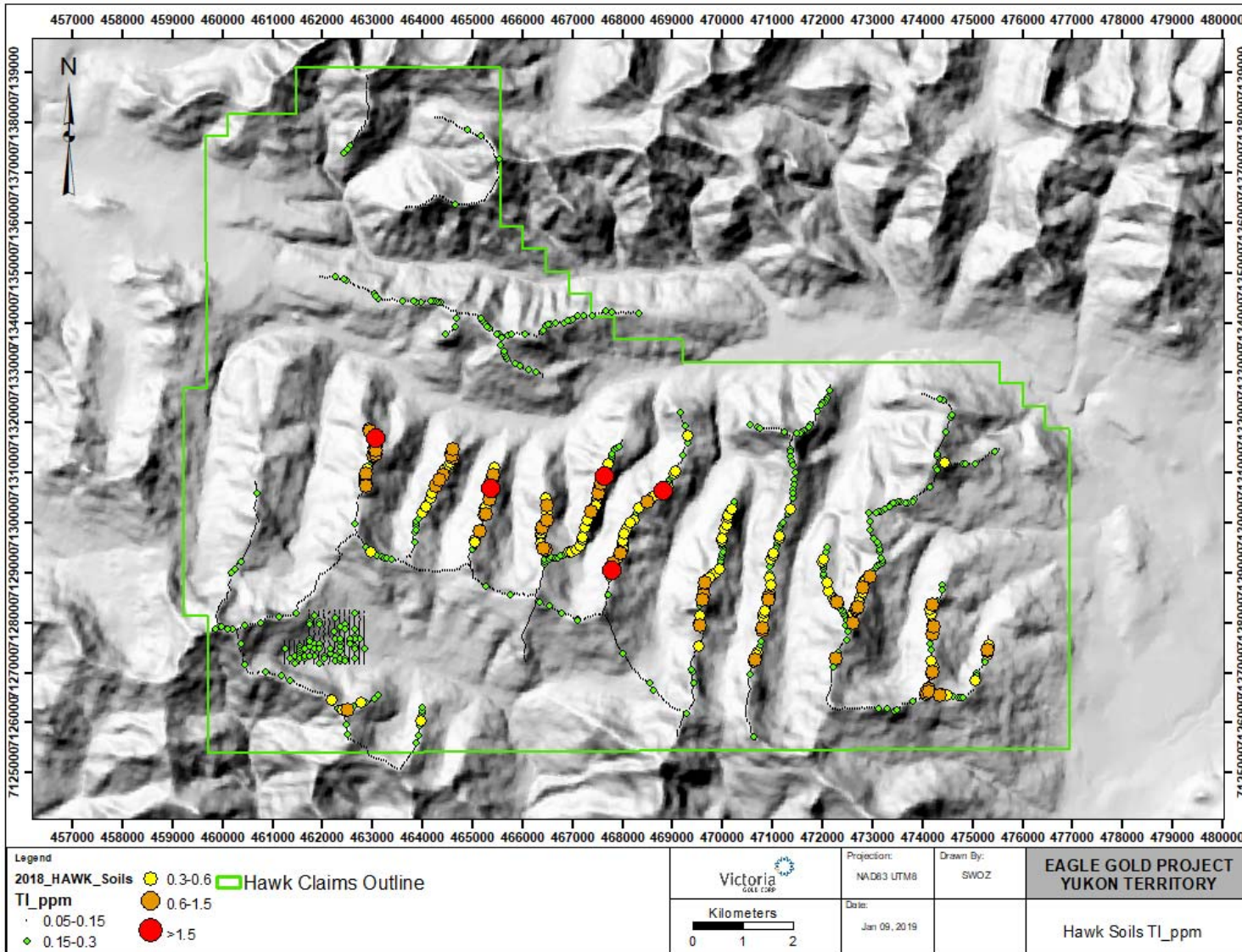


Figure 9- Soil Thallium Assays PPM

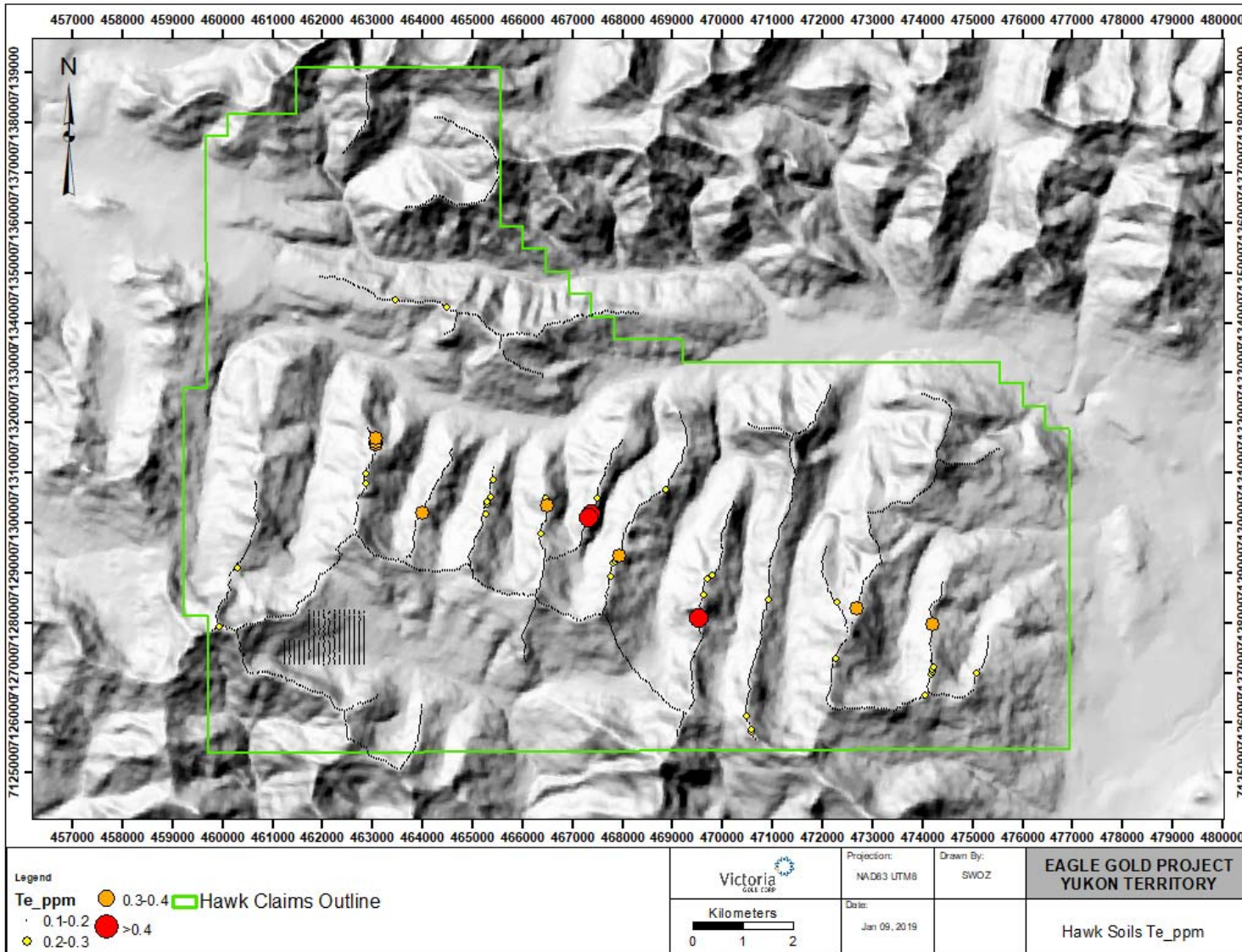


Figure 10- Soil Tellurium Assays PPM

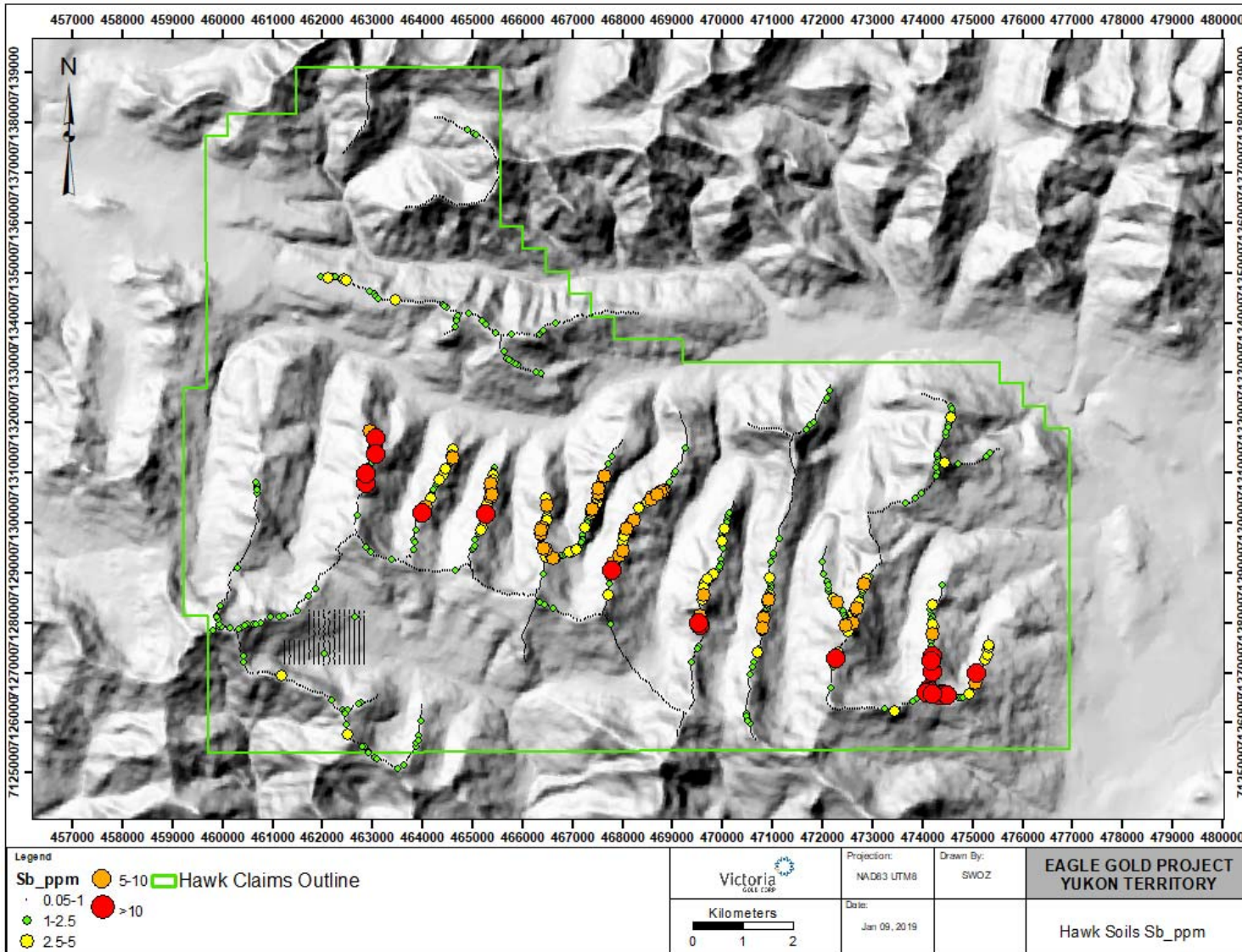


Figure 11- Soil Antimony Assays PPM

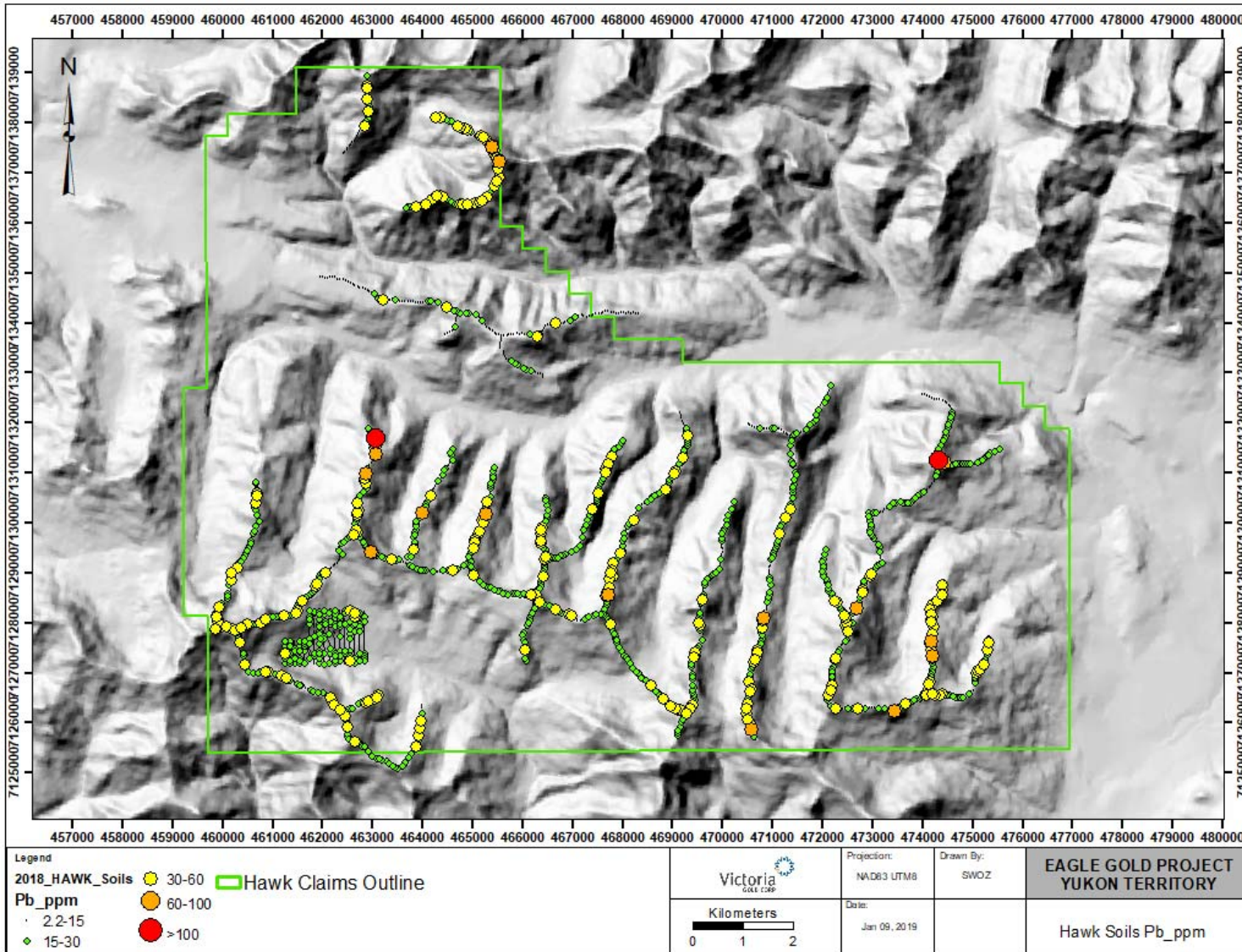


Figure 12- Soil Lead Assays PPM

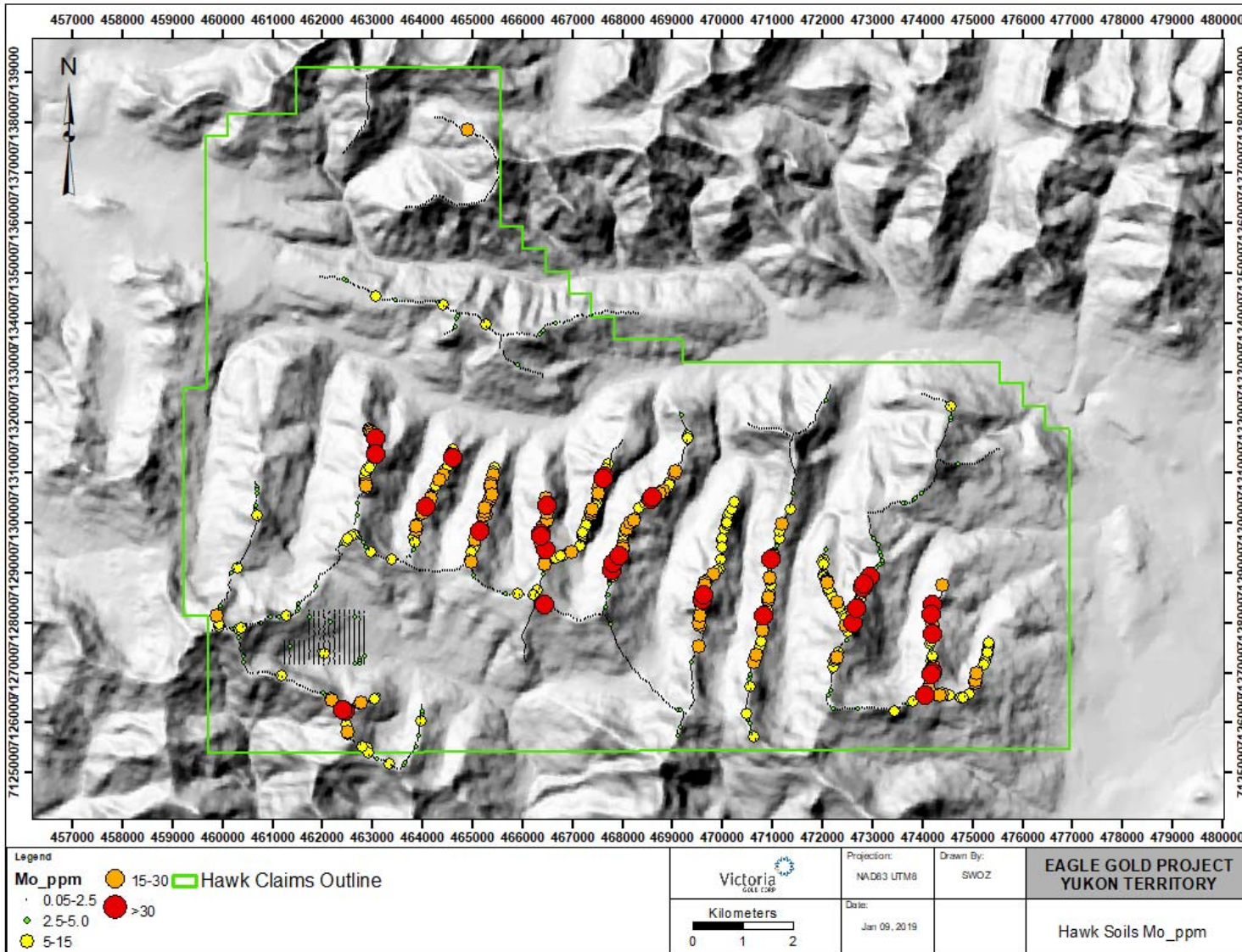


Figure 13- Soil Molybdenum Assays PPM

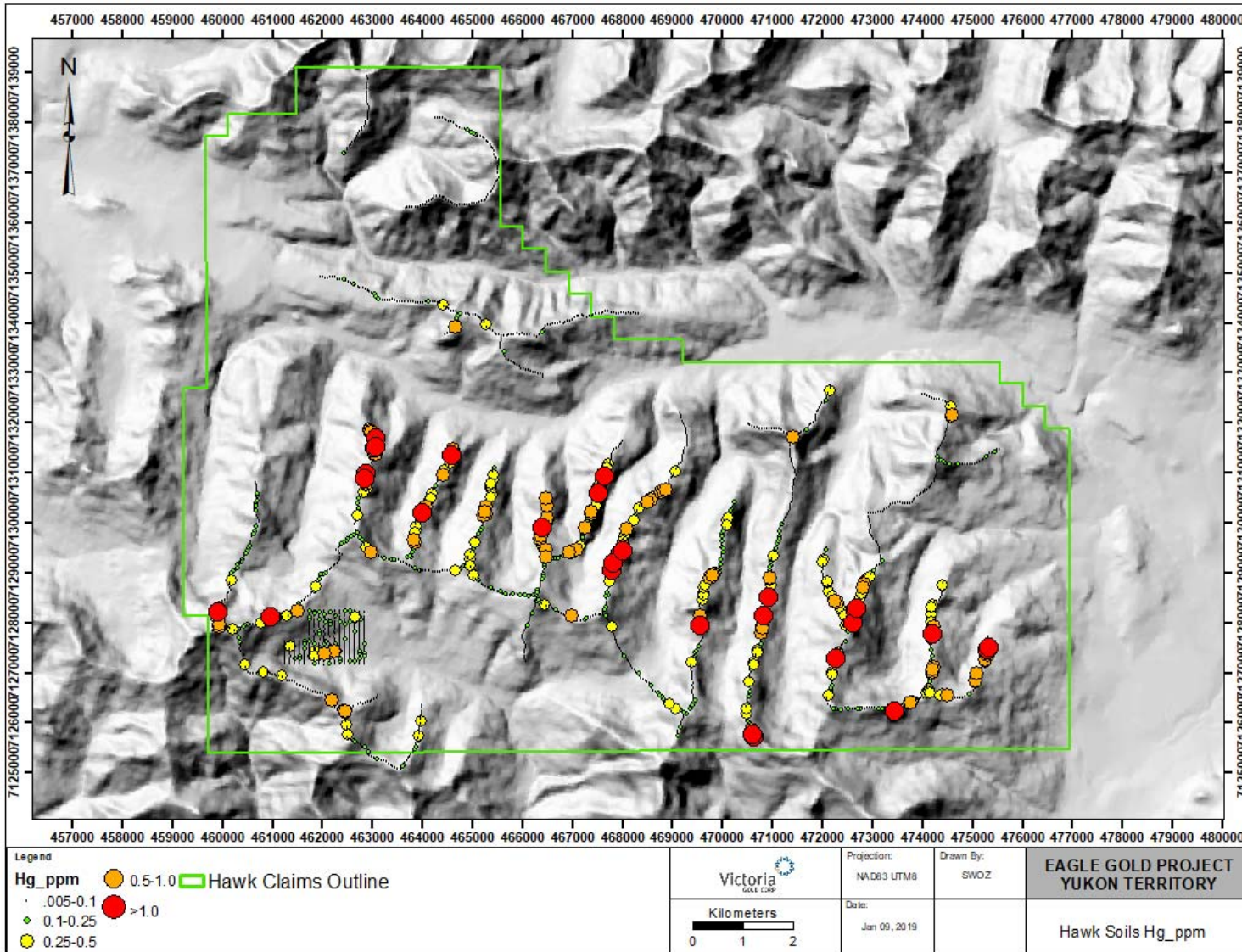


Figure 14- Soil Mercury Assays PPM

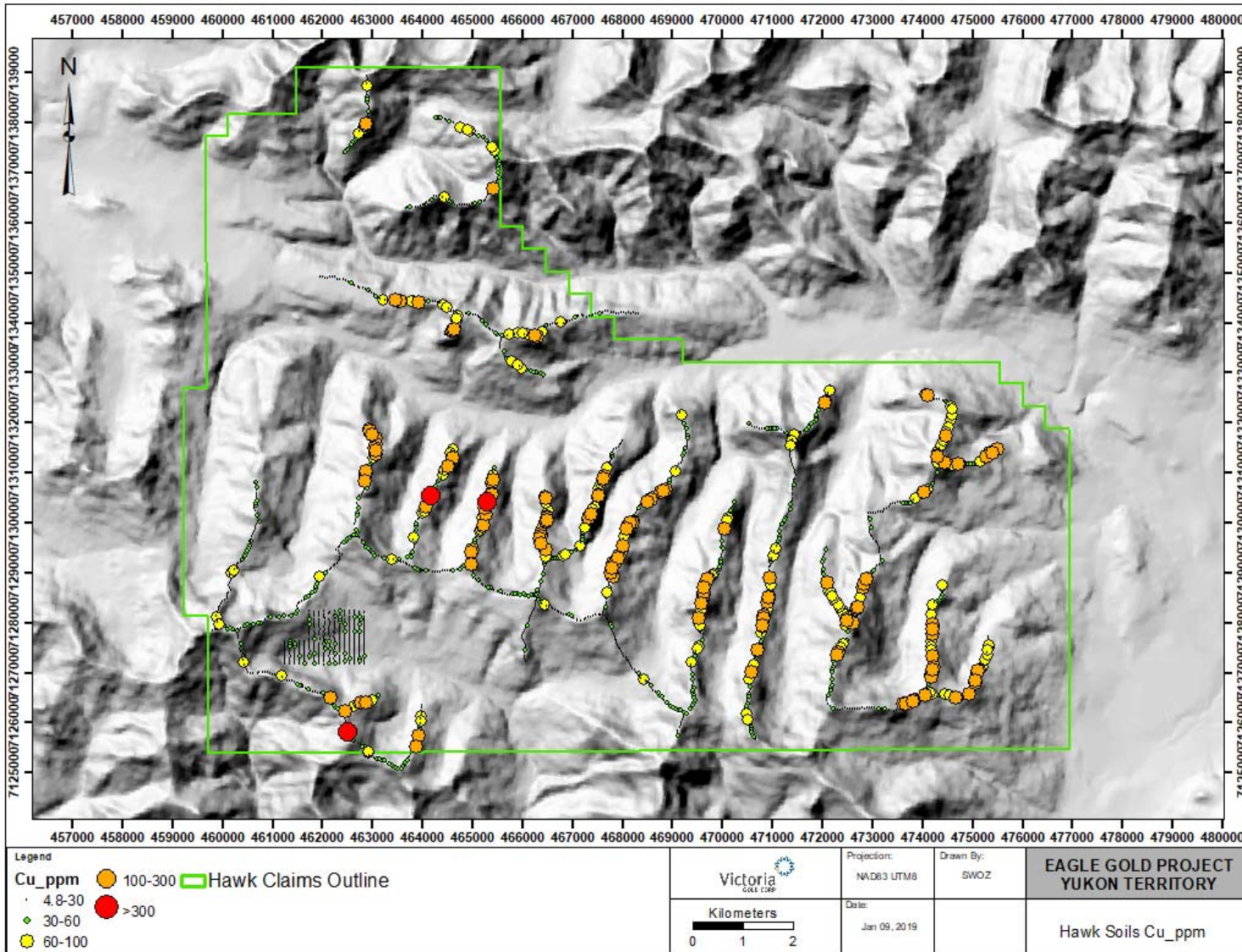


Figure 15- Soil Copper Assays PPM

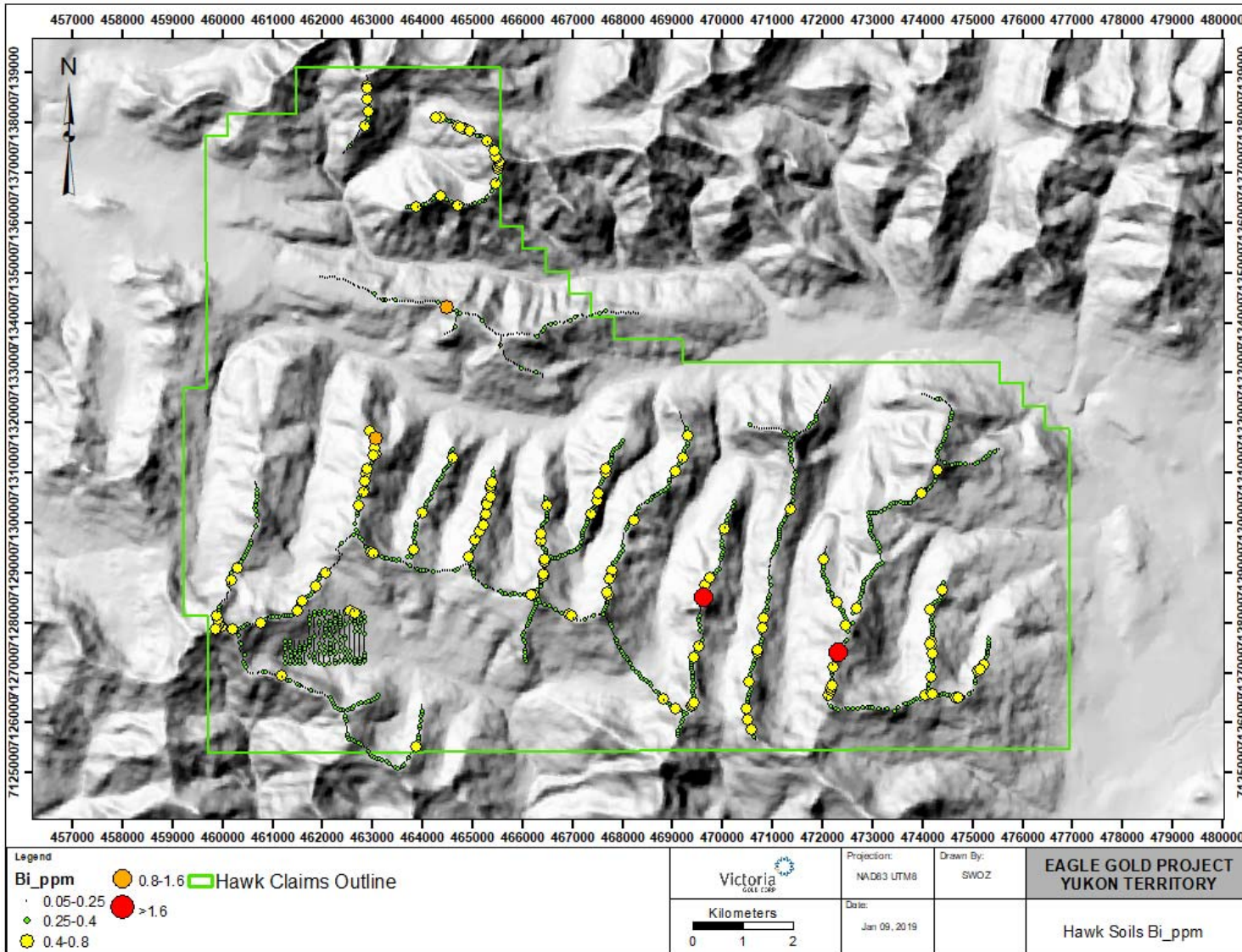


Figure 16- Soil Bismuth Assays PPM

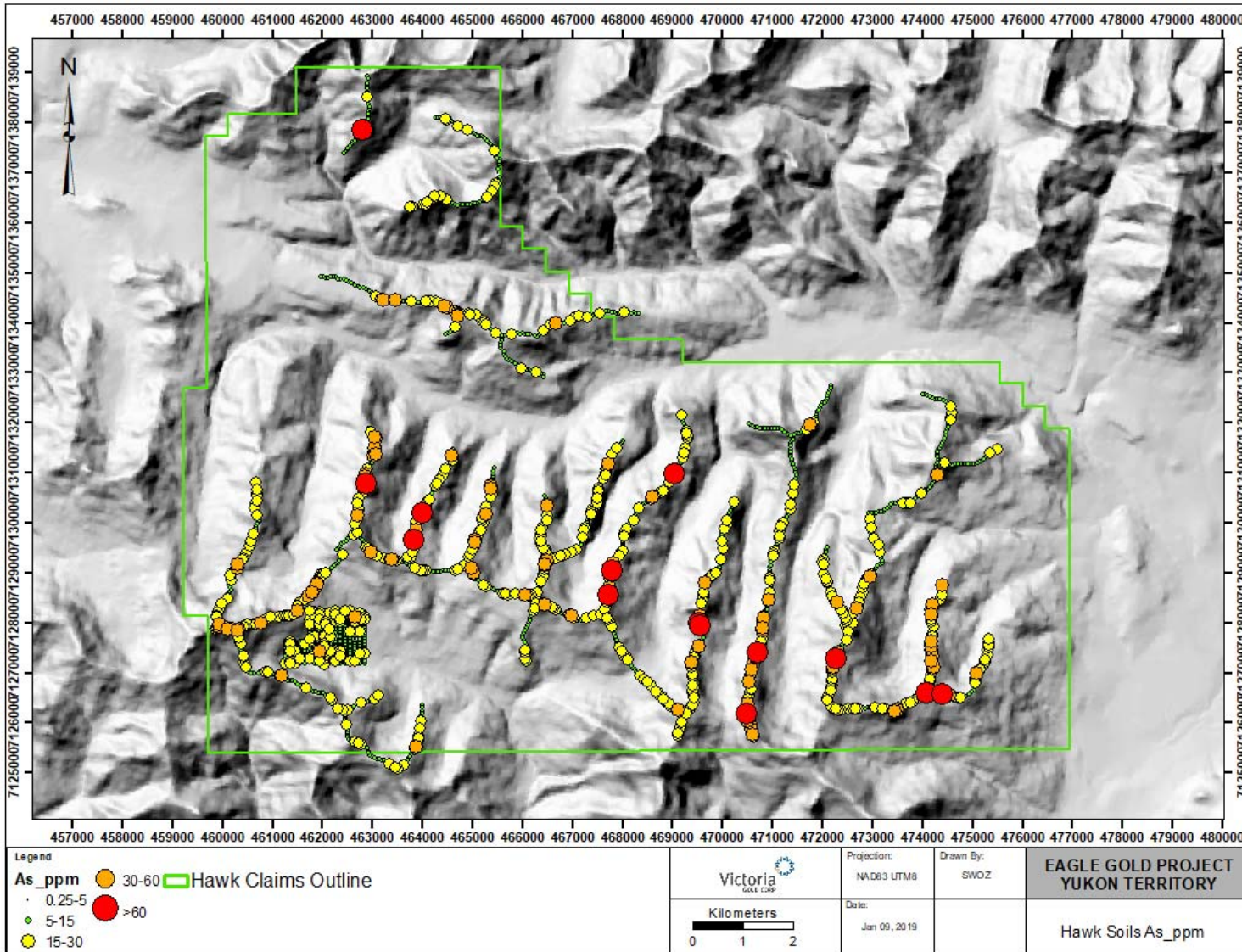


Figure 17- Soil Arsenic Assays PPM

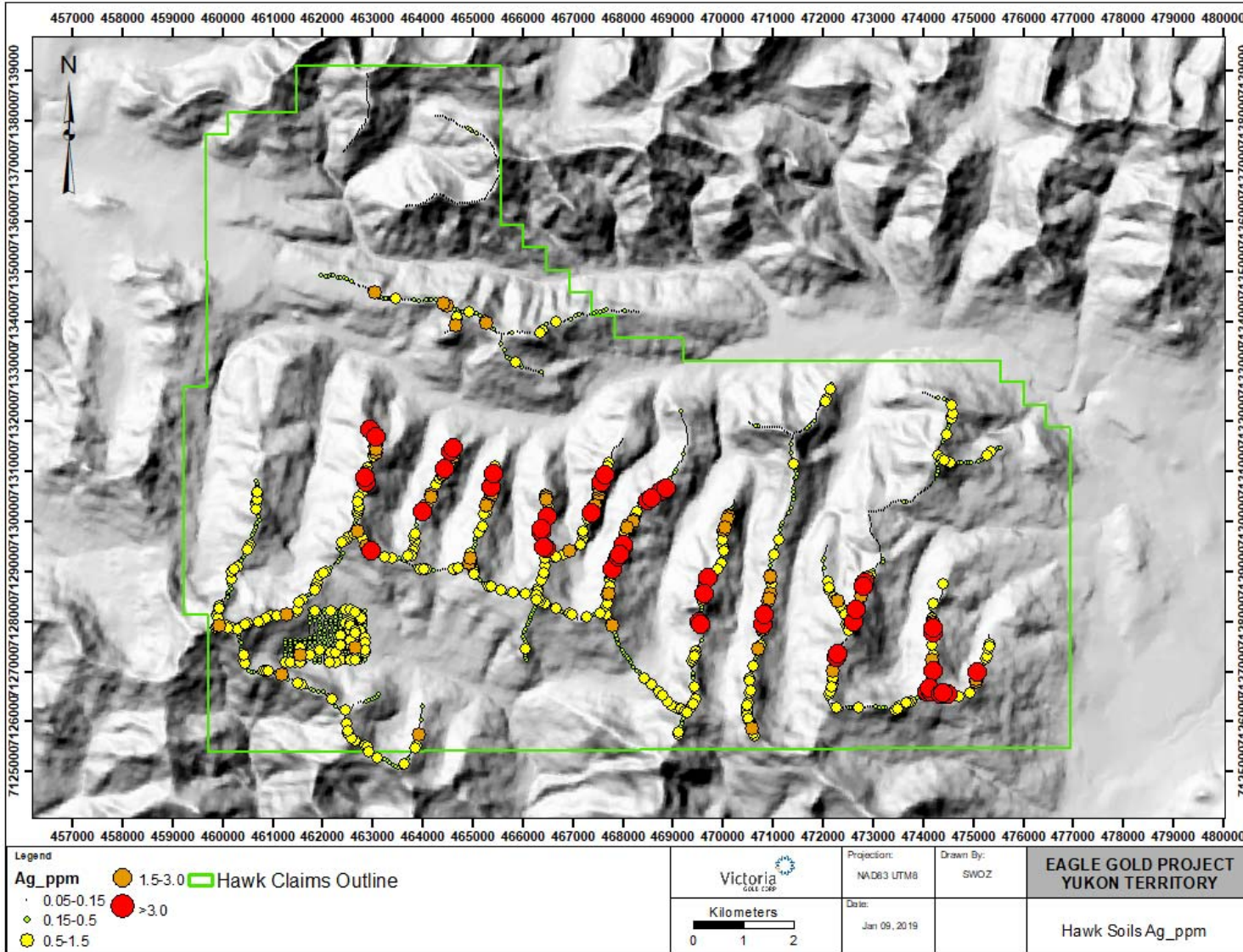


Figure 18- Soil Silver Assays PPM

F. Conclusion and Recommendations

The Hawk target north of Dublin Gulch was staked by StrataGold Corp. in May of 2018 to follow up on targets identified in satellite imagery. A number of oxidised spring gossans occur on the property draining off of coarsely mapped Earn Group limey sediments. The 2018 exploration program consisted of 2,033 soil samples covering most of the ridges on the property as well as a smaller 20 sample rock-chip/prospecting program. Subsequently, orthophotos were flown over the whole property in September.

Gold mineralization associated with silver, arsenic, thallium, and mercury (lesser extent antimony) in the limey sediments suggest Carlin gold type signatures potentially similar to deposits at the nearby Rackla belt. Additional on the ground work is needed to better map the structure and lithology in the area of the soil anomaly and follow up on highly anomalous soils samples.

Recommendations

Further work is recommended in the Hawk claims area including:

- Detailed lithologic and structural mapping in the Earn Group Sediments, focused on the central portion of the ridge over the WNW trending soil anomaly.
- Prospecting and following up on soil sampling in the Hyland Group sediments to the north.
- Additional soil sampling in the form of 50m spaced contour sampling in some areas of the central portion of the claim block.
- Detailed air photo interpretation using the 2018 orthomosaic.

G. Exploration Program Expenditures

2018 NO NAME (HAWK) PROJECT TARGET EVALUATION EXPLORATION EXPENDITURES					
Staking		Claims	\$/claim		
Contracted Staking Crew		833	120	\$99,960	
				Subtotal	\$99,960
Wages		#	days	\$/unit	
Geologist		2	6	\$350	\$4,200
Pika Soil Crew Leader		1	13	\$450	\$5,850
Pika Soil Samplers		4	13	\$350	\$18,200
				Subtotal	\$28,250
Camp & Logistics		#	days	\$/unit	
Camp/Living Costs		5	13	\$125	\$8,125
Field Expenses		1	13	\$195	\$2,535
				Subtotal	\$10,660
Assay & Geochem		#		\$/sample	
Soil Samples		2033		\$14.34	\$ 29,153.22
Rock Samples		20		\$16.86	\$ 337.20
				Subtotal	\$ 29,490.42
Air Support		#	Hours	\$/unit	
Helicopter travel to/from Camp-Worksites August		31.3	31.3 hrs + fuel	\$1,350	\$47,916.33
Helicopter travel to/from staking sites		42	42 hrs + fuel	\$1,350	\$64,474.20
				Subtotal	\$112,390.53
				Total	\$280,750.95

H. Project Partnerships

No Project Partnerships are in place.

I. References

- Colpron, M., Logan, J., and Mortensen, J.K., 2002, U-Pb zircon age constraint for late Neoproterozoic rifting and initiation of the lower Paleozoic passive margin of western Laurentia: *Canadian Journal of Earth Sciences*, v. 39, p. 133–143
- Doherty, R.A, 2007, Technical report on the Scheelite Dome property, Mayo area, Yukon, Riverside Resources Inc., 70 pp.
- Hart, C.J.R., Goldfarb, R.J., Lewis, L.L., and Mair, J.L., 2004, The Northern Cordillera Mid-Cretaceous Plutonic Province: Ilmenite/magnetite-series granitoids and intrusion-related mineralization: *Resource Geology*, v. 54, p. 253–280.
- Hunt, J., & Murphy, D. (1996). Geological Map of Mt. Haldane Area Yukon (NTS 105 M/14). *Geoscience Map 1996-4*. Canada/Yukon Mineral Development Agreement Geoscience Office.
- Mair, J.L., 2004, Tectonic Setting, Magmatism and Magmatic-Hydrothermal Systems at Scheelite Dome, Tombstone Gold Belt, Yukon: Critical Constraints on Intrusion-Related Gold Systems, Unpublished PhD thesis, University of Western Australia, Crawley, Australia
- Mair, J.L., Hart, C.J.R., Groves, D.I., and Goldfarb, R.J., 2003, The nature of Tombstone plutonic suite rocks at Scheelite Dome, Tintina gold province: Evidence for an enriched mantle contribution, in Blevin, P.L., Jones, M., and Chappell, B.W., eds., *Magmas to mineralization: The Ishihara Symposium*, GEMOC Macquarie University, Sydney, Proceedings, p. 93–96.
- Mair, J.L., Goldfarb, R.J., Johnson, C.A., Hart, C.J.R., Marsh, E.F., 2006a, Geochemical constraints on the genesis of the Scheelite Dome Intrusion-Related Gold Deposit, Tombstone Gold Belt, Yukon, Canada: *Economic Geology*, v. 101, p. 23-553.

- Mair, J.L., Hart, C.J.R. and Stephens, J.R., 2006b, Deformation history of the northwestern Selwyn Basin, Yukon, Canada: Implications for orogen evolution and mid-Cretaceous magmatism, *GSA Bulletin*, v. 118, p. 304-323
- Monger, J.W.H., 1993, Canadian Cordilleran tectonics: From geosynclines to crustal collage: *Canadian Journal of Earth Sciences*, v. 30, p. 209–231.
- Mortensen, J.K., Hart, C.J.R., Murphy, D.C., and Heffernan, S., 2000, Temporal evolution of early and mid-Cretaceous magmatism in the Tintina gold belt, *in* Tucker, T.L. and Smith, M.T. eds., *The Tintina gold belt: Concepts, exploration, and discoveries: Vancouver, British Columbia and Yukon Chamber of Mines Special Volume 2*, p. 49–57.
- Murphy, D.C. and Héon, D., 1995, Geology and Mineral Occurrences of Seattle Creek Map Area (NTS 115P/16), Western Selwyn Basin; *in* Exploration and Geological Services Division, Yukon, Indian and Northern Affairs Canada, p. 59-71.
- Ross, G.M., 1991, Tectonic setting of the Windermere Supergroup revisited: *Geology*, v. 19, p. 1125–1128

C. Statement Of Qualifications

I, Paul D. Gray, P. Geo., do hereby certify:

THAT I am a Professional Geoscientist with offices at Suite 250 - 2237 2nd Avenue, Whitehorse, YT Y1A 0K7

THAT I am an author of the Technical Report "Yukon Mineral Exploration Program(YMEP) Report for the Staking and the Target Evaluation Program on the No Name (Hawk) Target Area, Yukon"

THAT I am a member in good standing (#29833) of the Association of Professional Engineers and Geoscientists of British Columbia.

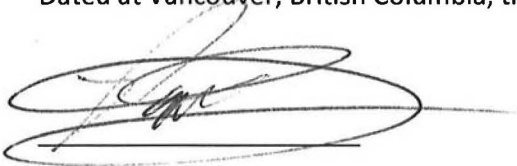
THAT I am a graduate of Dalhousie University, Halifax, in the Province of Nova Scotia, with a Bachelor of Science degree (Honours) in Earth Sciences

THAT I have practiced my profession as an exploration geologist in the mineral exploration industry continuously since 1997. I have worked on base, precious and industrial metals exploration projects as a geologist in Canada, the United States of America, Asia, and South and Central America.

THAT I am employed as V.P. Exploration with Victoria Gold Corp.

THAT I have read the definition of "qualified person" set out in National Instrument 43-101 ("NI 43-101") and certify that by reason of my education, affiliation with a professional association (as defined in NI 43-101) and past relevant work experience, I fulfill the requirements to be a "qualified person" for the purposes of NI 43-101.

Dated at Vancouver, British Columbia, this 31 day of January, 2019.



Paul D. Gray, P. Geo.

V.P. Exploration

Victoria Gold Corp.



NO NAME YMEP REPORT 2019

I, Helena Kuikka am a geologist in the mineral exploration industry employed by Victoria Gold Corp.

I am an author of the Technical Report entitled "Yukon Mineral Exploration Program(YMEP) Report for the Staking and the Target Evaluation Program on the No Name (Hawk) Target Area, Yukon" and I personally oversaw the program in the field.

I am a member in good standing (#47650) of the Engineers and Geoscientists of British Columbia.

I am a graduate of Simon Fraser University, Canada, with a Bachelor of Science Degree in Earth Sciences-Geology.

I have actively engaged in the mineral exploration industry since 2008.

Dated this 31 day of January 2019



Helena Kuikka BSc. P.Geo

NO NAME YMEP REPORT 2019

I, Steven Wozniak am employed the mineral exploration industry by Victoria Gold Corp.

I am an author of the Technical Report entitled "Yukon Mineral Exploration Program(YMEP) Report for the Staking and the Target Evaluation Program on the No Name (Hawk) Target Area, Yukon"

I am a graduate of Mount Royal University, Canada, with a Bachelor of Science Degree in Earth Sciences-Geology.

I have actively engaged in the mineral exploration industry since 2011.

Dated this 31 day of January, 2019



Steven Wozniak BSc.