

STRATEGIC METALS LTD.

FIGURE 1

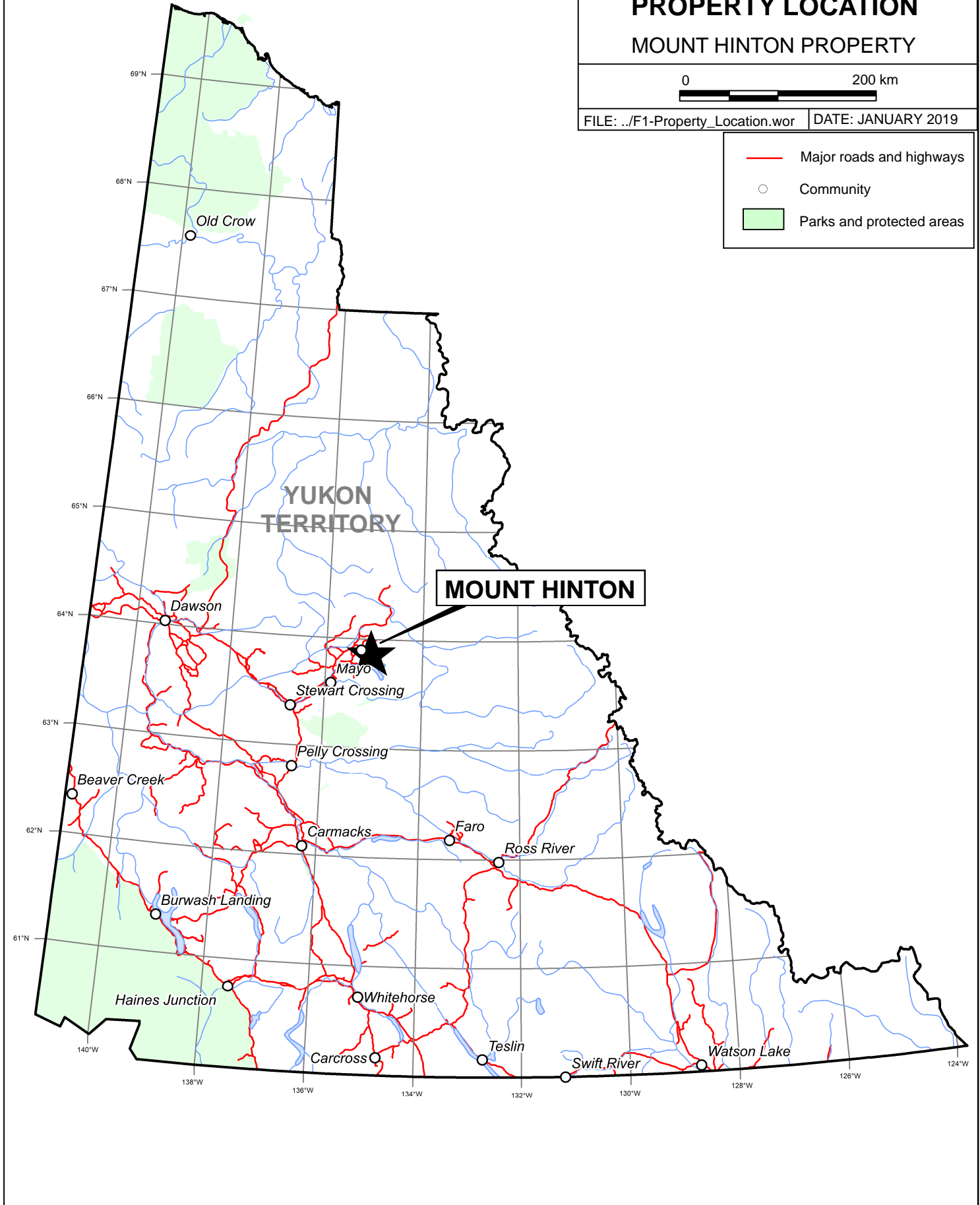
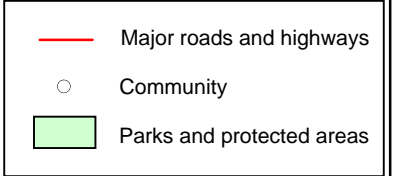
ARCHER, CATHRO & ASSOCIATES (1981) LIMITED

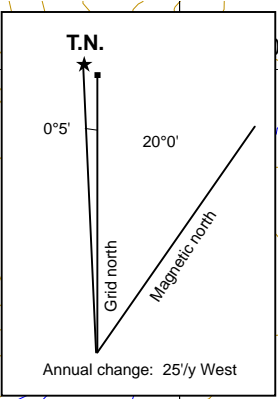
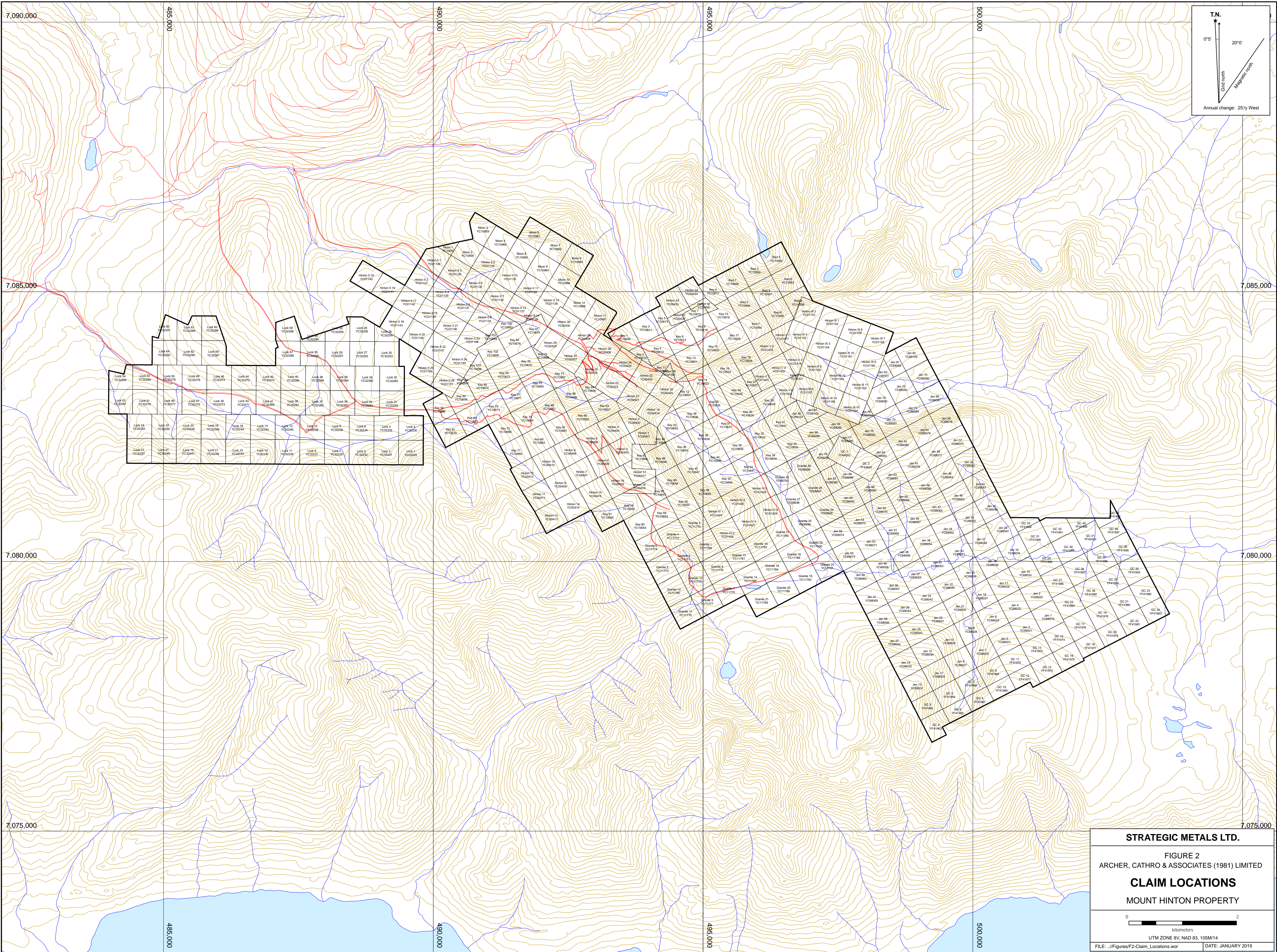
PROPERTY LOCATION

MOUNT HINTON PROPERTY



FILE: ../F1-Property_Location.wor | DATE: JANUARY 2019





STRATEGIC METALS LTD.

FIGURE 2
 ARCHER, CATHRO & ASSOCIATES (1981) LIMITED

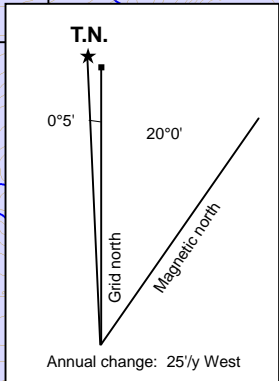
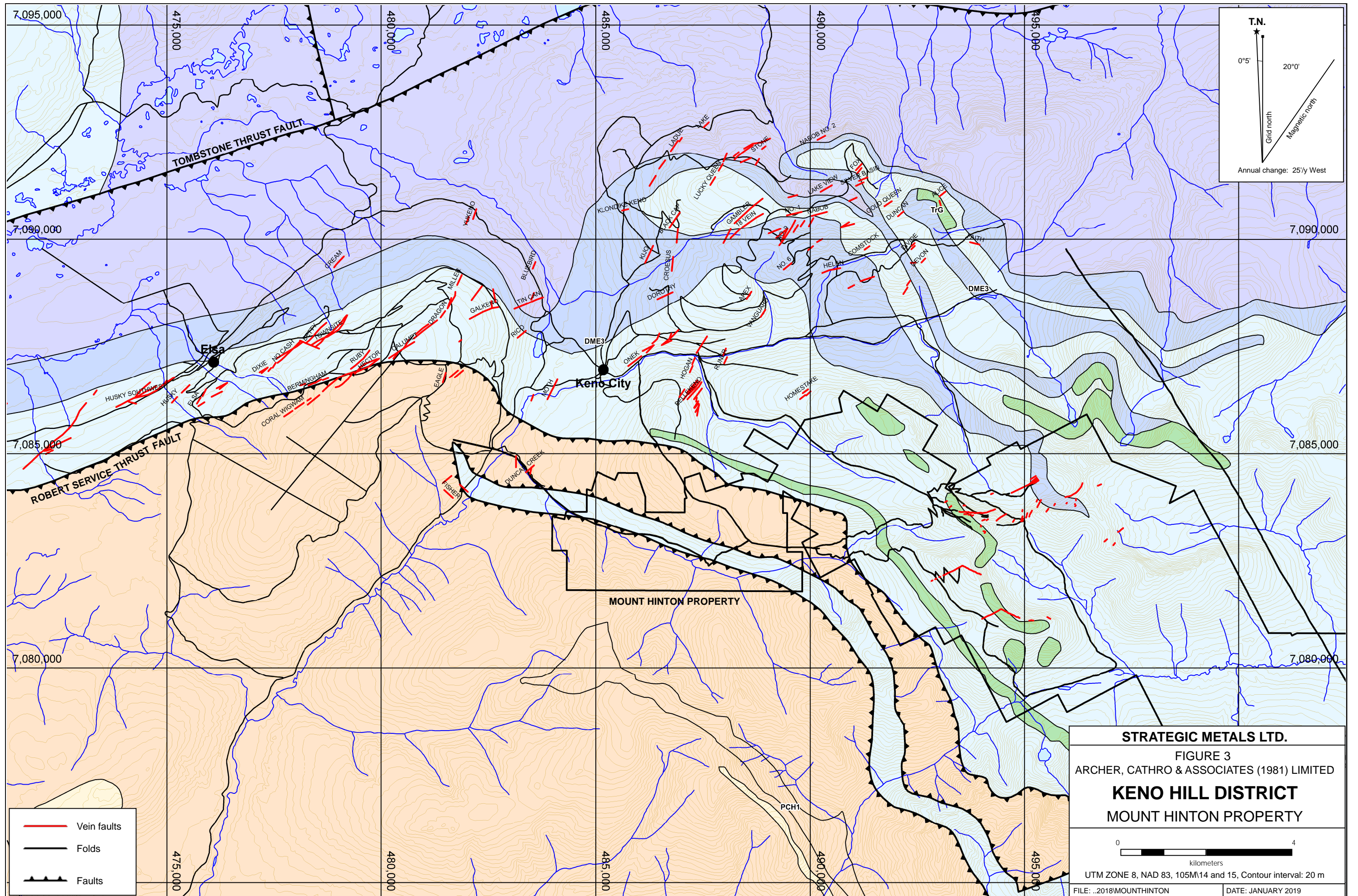
CLAIM LOCATIONS

MOUNT HINTON PROPERTY

0 2
 Kilometers

UTM ZONE 8V, NAD 83, 105M/14

FILE: \\Figures\F2-Claim_Locations.wor DATE: JANUARY 2019



- Vein faults
- Folds
- Faults

STRATEGIC METALS LTD.

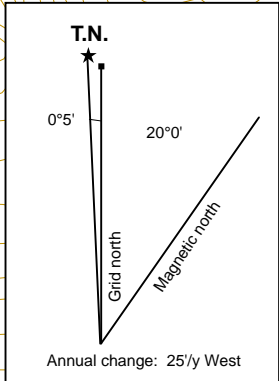
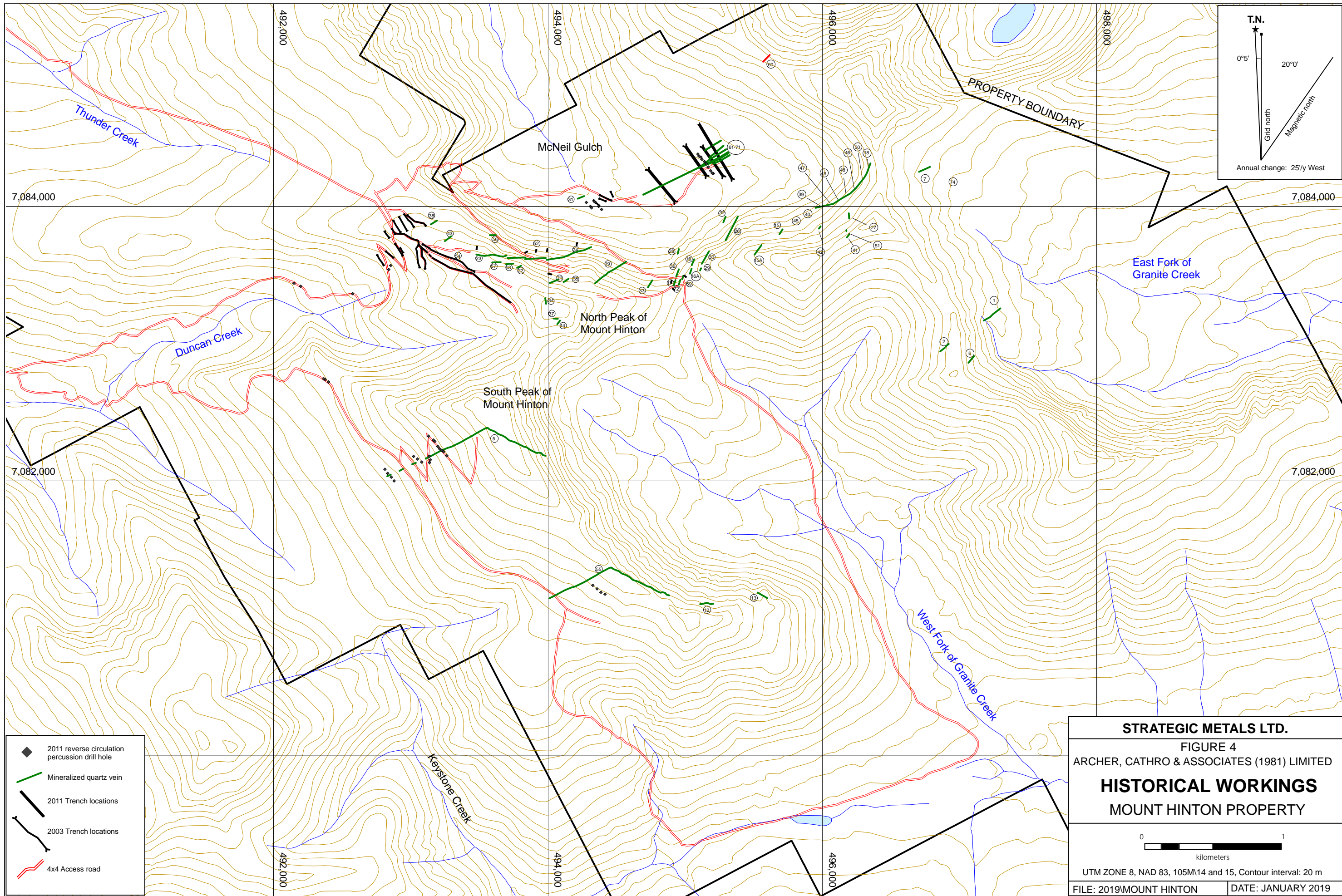
FIGURE 3
ARCHER, CATHRO & ASSOCIATES (1981) LIMITED

KENO HILL DISTRICT
MOUNT HINTON PROPERTY

0 4
kilometers

UTM ZONE 8, NAD 83, 105M, 14 and 15, Contour interval: 20 m

FILE: ..2018\MOUTHINTON DATE: JANUARY 2019



- ◆ 2011 reverse circulation percussion drill hole
- Mineralized quartz vein
- 2011 Trench locations
- 2003 Trench locations
- 4x4 Access road

STRATEGIC METALS LTD.

FIGURE 4
ARCHER, CATHRO & ASSOCIATES (1981) LIMITED

HISTORICAL WORKINGS
MOUNT HINTON PROPERTY

0 ————— 1
kilometers

UTM ZONE 8, NAD 83, 105M/14 and 15, Contour interval: 20 m

FILE: 2019MOUNT HINTON DATE: JANUARY 2019

STRATEGIC METALS LTD.

FIGURE 5

ARCHER, CATHRO & ASSOCIATES (1981) LIMITED

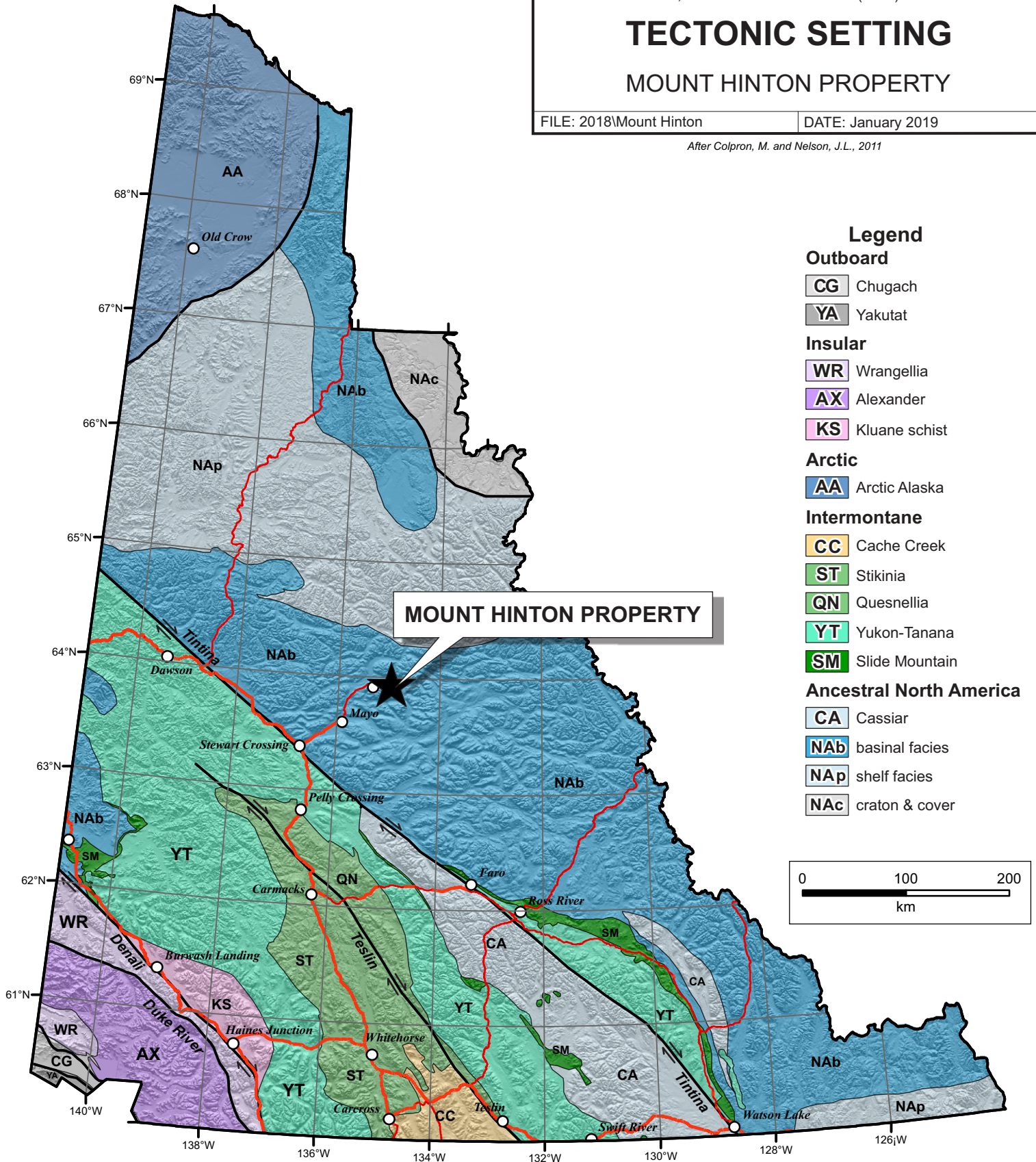
TECTONIC SETTING

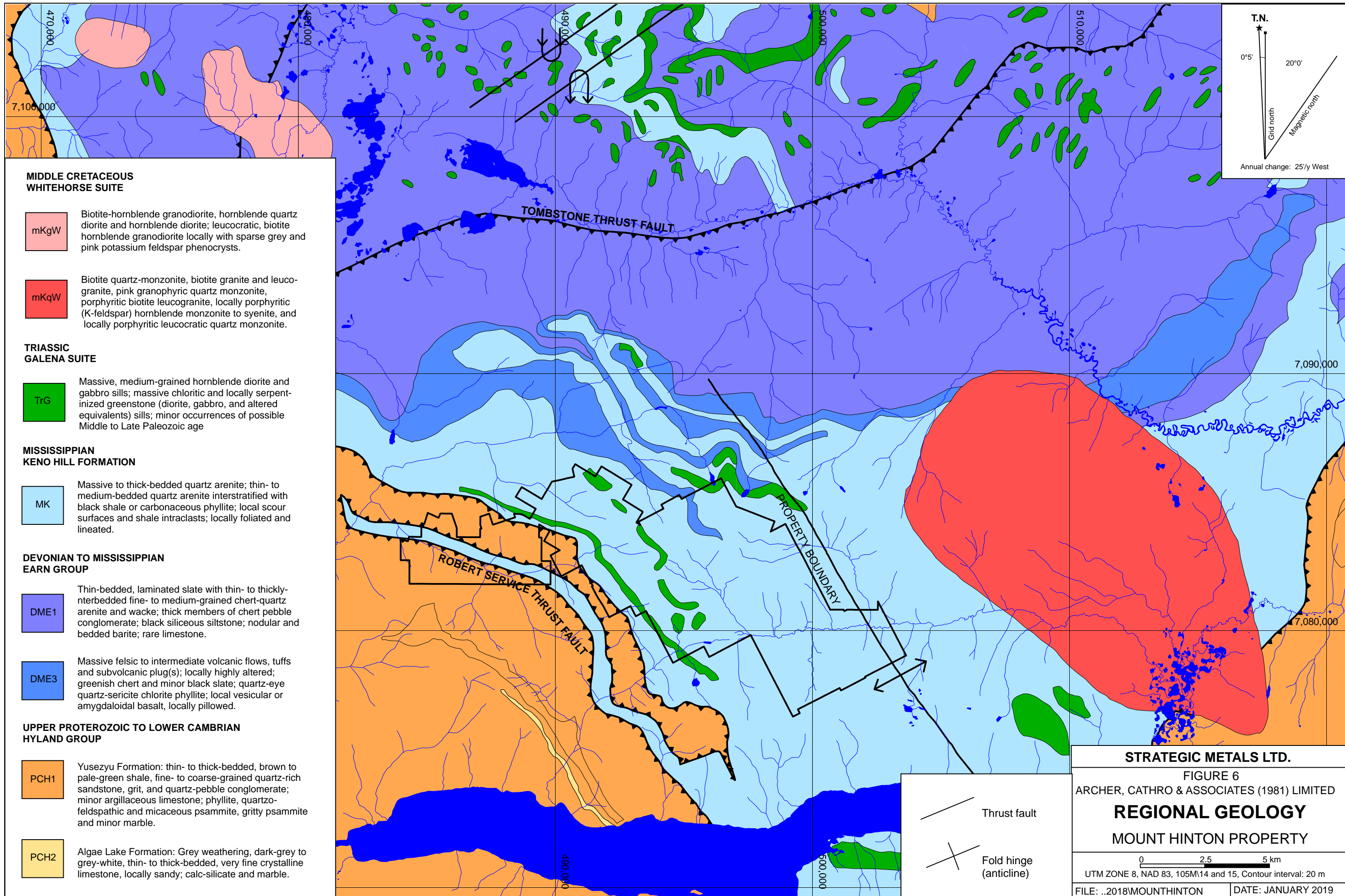
MOUNT HINTON PROPERTY

FILE: 2018\Mount Hinton

DATE: January 2019

After Colpron, M. and Nelson, J.L., 2011





**MIDDLE CRETACEOUS
WHITEHORSE SUITE**

- mKgW Biotite-hornblende granodiorite, hornblende quartz diorite and hornblende diorite; leucocratic, biotite hornblende granodiorite locally with sparse grey and pink potassium feldspar phenocrysts.
- mKqW Biotite quartz-monzonite, biotite granite and leucogranite, pink granophyric quartz monzonite, porphyritic biotite leucogranite, locally porphyritic (K-feldspar) hornblende monzonite to syenite, and locally porphyritic leucocratic quartz monzonite.

**TRIASSIC
GALENA SUITE**

- TrG Massive, medium-grained hornblende diorite and gabbro sills; massive chloritic and locally serpentized greenstone (diorite, gabbro, and altered equivalents) sills; minor occurrences of possible Middle to Late Paleozoic age

**MISSISSIPPIAN
KENO HILL FORMATION**

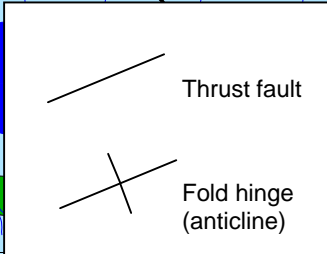
- MK Massive to thick-bedded quartz arenite; thin- to medium-bedded quartz arenite interstratified with black shale or carbonaceous phyllite; local scour surfaces and shale intraclasts; locally foliated and lineated.

**DEVONIAN TO MISSISSIPPIAN
EARN GROUP**

- DME1 Thin-bedded, laminated slate with thin- to thickly-nterbedded fine- to medium-grained chert-quartz arenite and wacke; thick members of chert pebble conglomerate; black siliceous siltstone; nodular and bedded barite; rare limestone.
- DME3 Massive felsic to intermediate volcanic flows, tuffs and subvolcanic plug(s); locally highly altered; greenish chert and minor black slate; quartz-eye quartz-sericite chlorite phyllite; local vesicular or amygdaloidal basalt, locally pillowed.

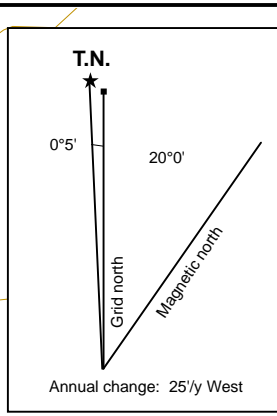
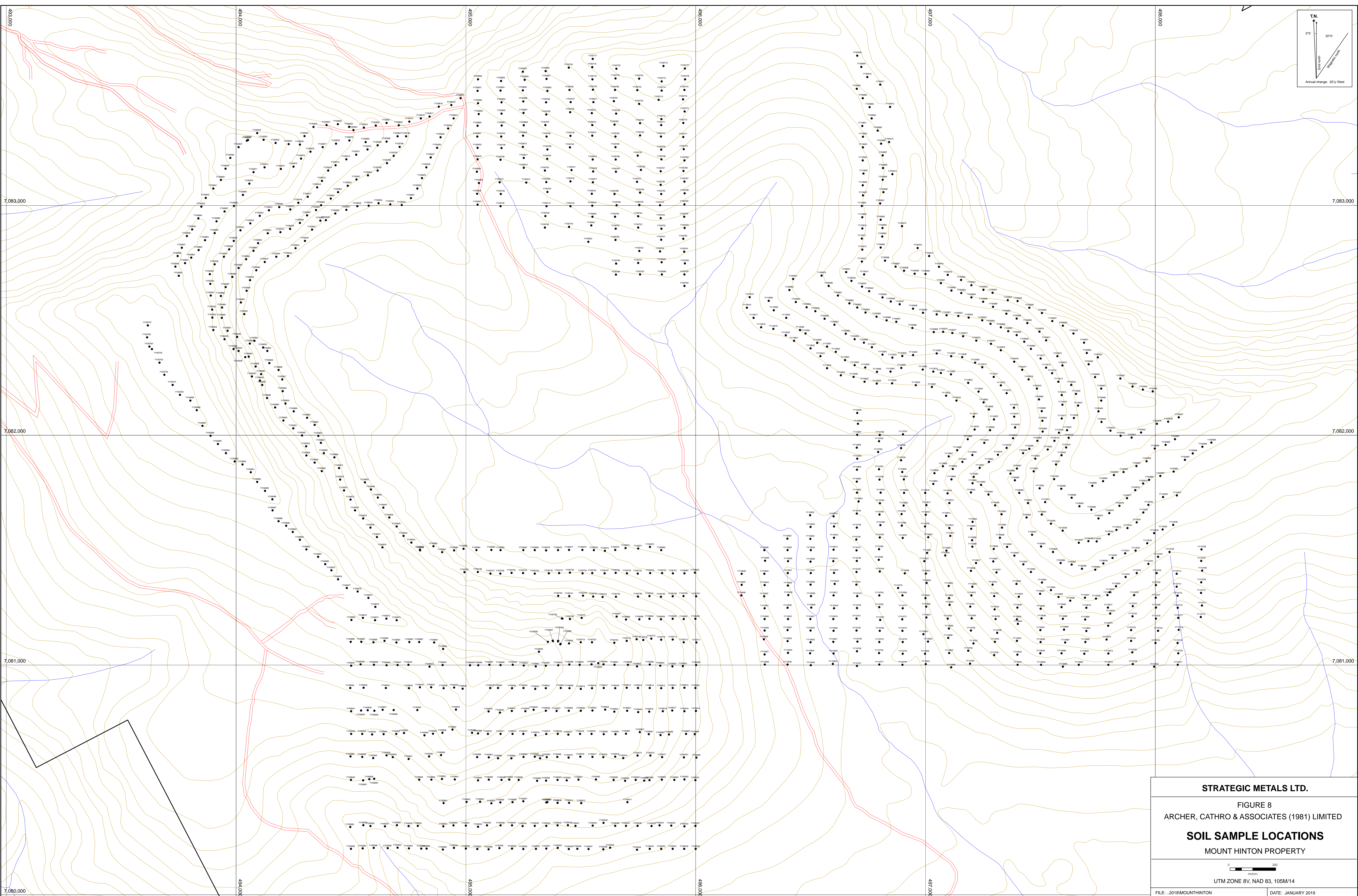
**UPPER PROTEROZOIC TO LOWER CAMBRIAN
HYLAND GROUP**

- PCH1 Yusezyu Formation: thin- to thick-bedded, brown to pale-green shale, fine- to coarse-grained quartz-rich sandstone, grit, and quartz-pebble conglomerate; minor argillaceous limestone; phyllite, quartzofeldspathic and micaceous psammite, gritty psammite and minor marble.
- PCH2 Algae Lake Formation: Grey weathering, dark-grey to grey-white, thin- to thick-bedded, very fine crystalline limestone, locally sandy; calc-silicate and marble.



STRATEGIC METALS LTD.
 FIGURE 6
 ARCHER, CATHRO & ASSOCIATES (1981) LIMITED
REGIONAL GEOLOGY
 MOUNT HINTON PROPERTY

0 2.5 5 km
 UTM ZONE 8, NAD 83, 105M14 and 15, Contour interval: 20 m
 FILE: ..2018MOUNTHINTON DATE: JANUARY 2019



STRATEGIC METALS LTD.

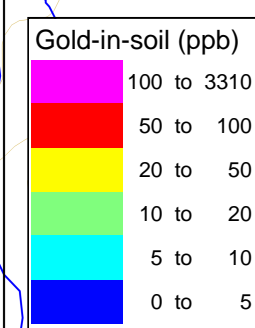
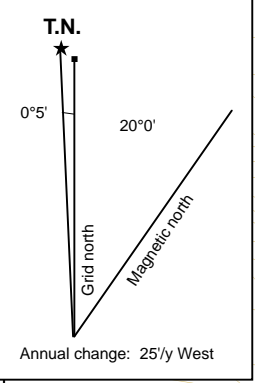
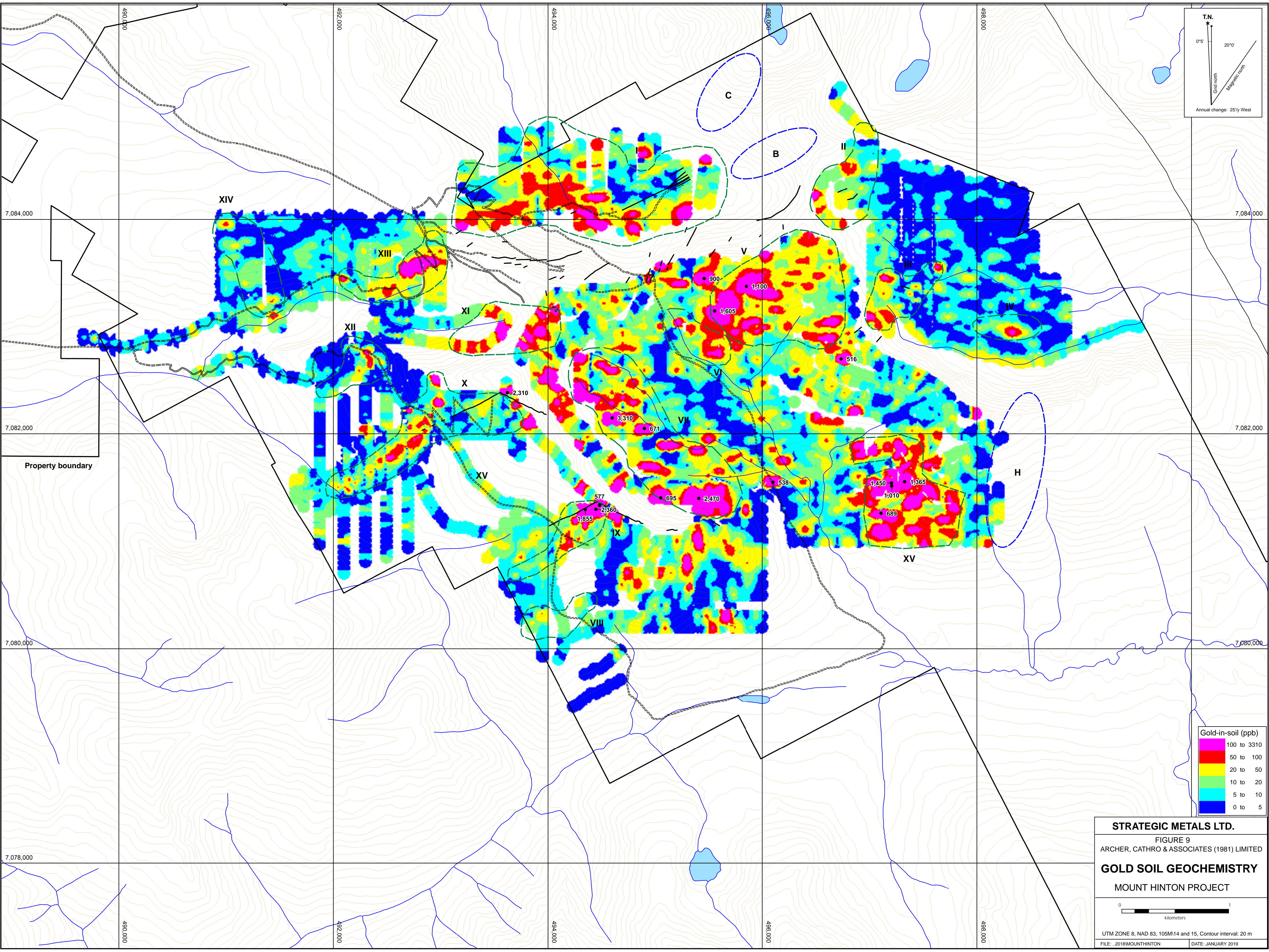
FIGURE 8
ARCHER, CATHRO & ASSOCIATES (1981) LIMITED

SOIL SAMPLE LOCATIONS
MOUNT HINTON PROPERTY

0 10 20
meters

UTM ZONE 8V, NAD 83, 105M/14

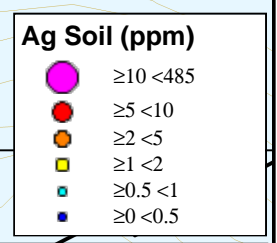
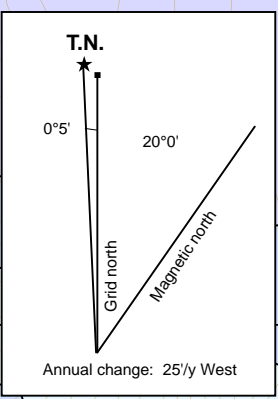
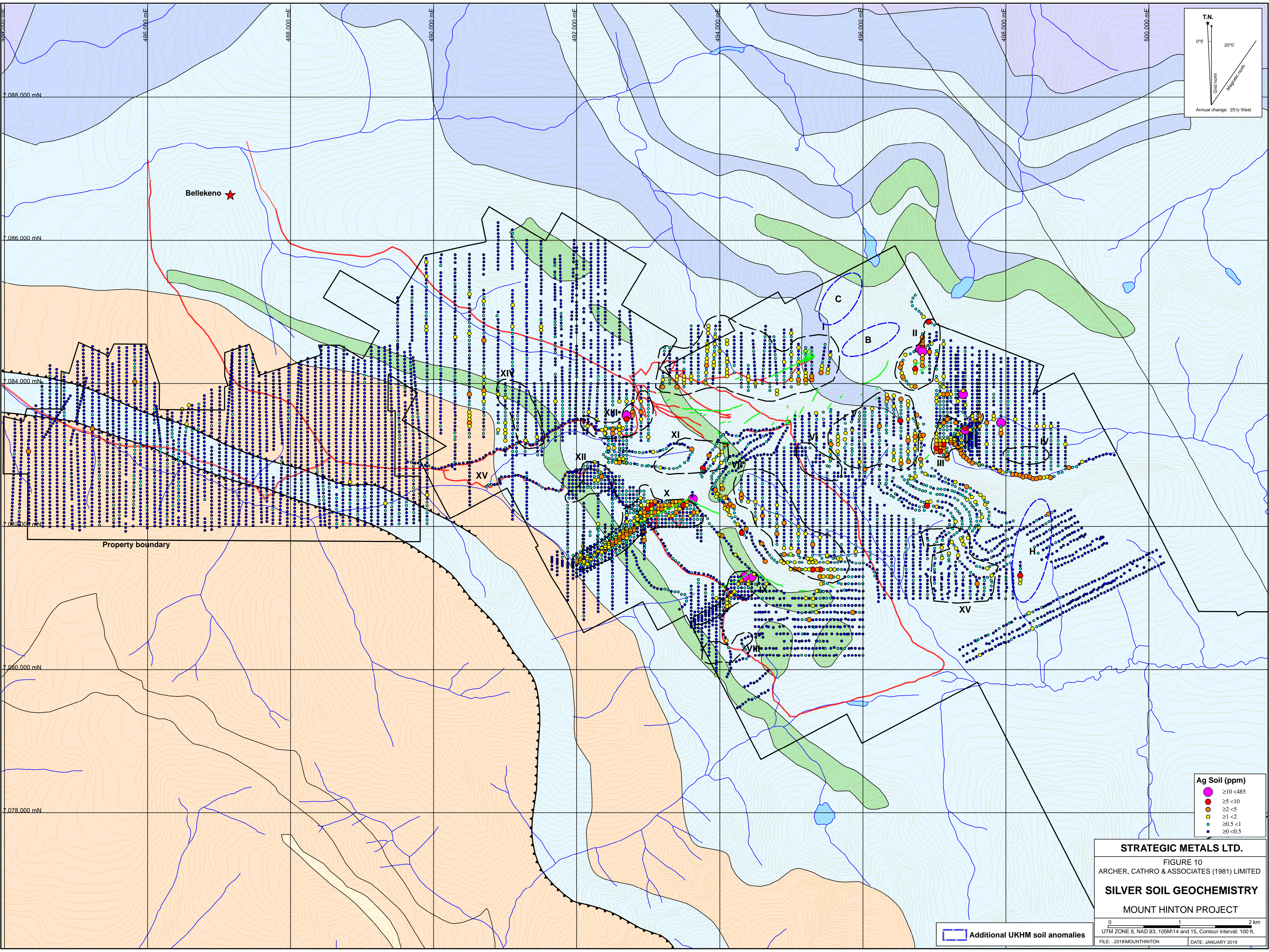
FILE: .2018MOUNTHINTON DATE: JANUARY 2019



STRATEGIC METALS LTD.
 FIGURE 9
 ARCHER, CATHRO & ASSOCIATES (1981) LIMITED
GOLD SOIL GEOCHEMISTRY
 MOUNT HINTON PROJECT

0 1
 kilometers

UTM ZONE 8, NAD 83, 105M14 and 15, Contour interval: 20 m
 FILE: .2018MOUNTHINTON DATE: JANUARY 2019



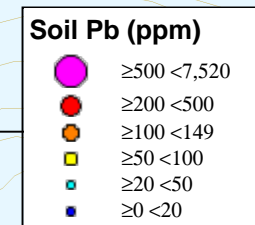
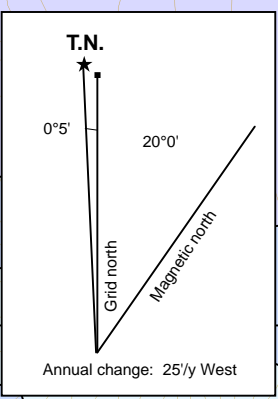
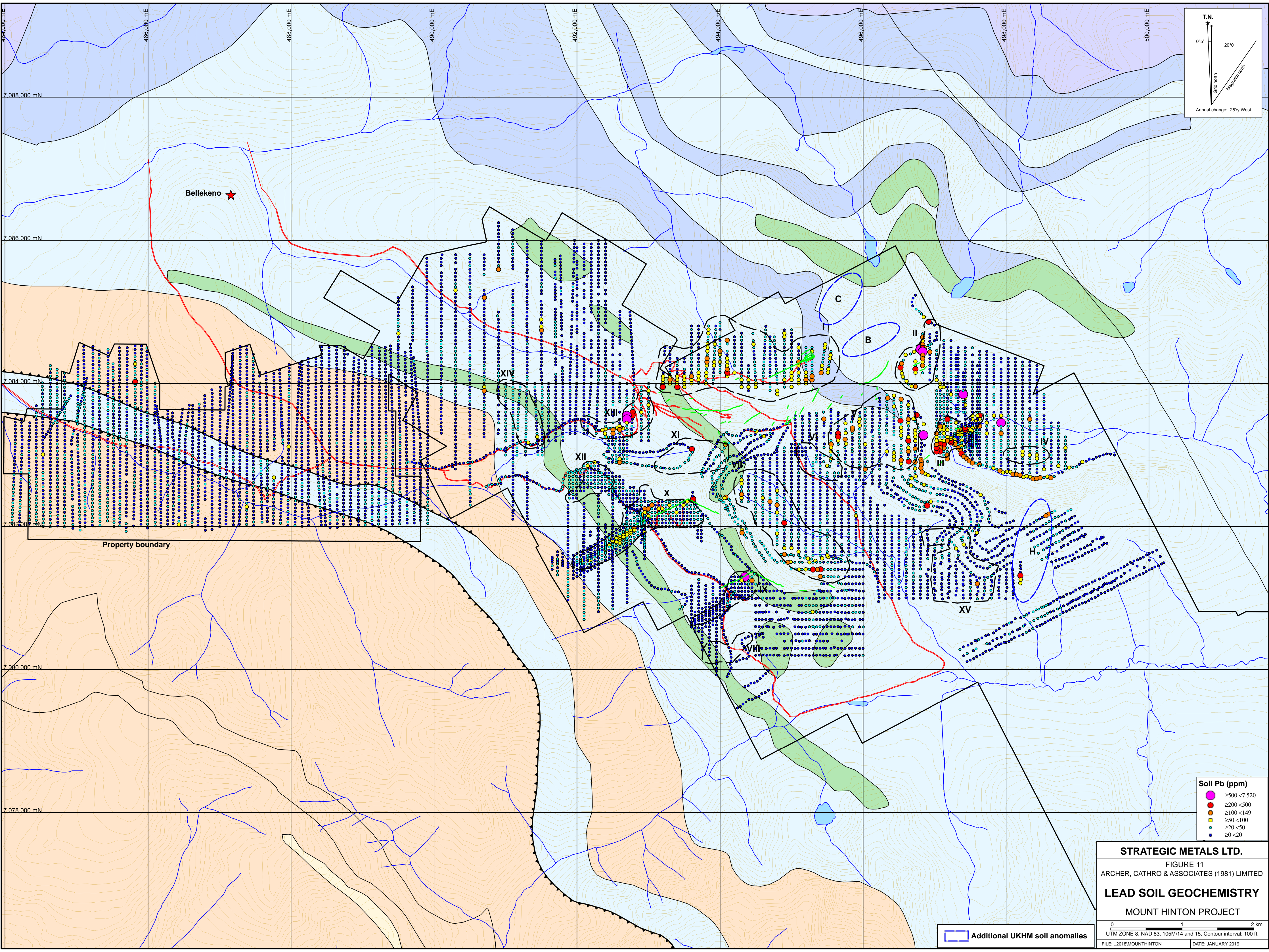
STRATEGIC METALS LTD.
 FIGURE 10
 ARCHER, CATHRO & ASSOCIATES (1981) LIMITED
SILVER SOIL GEOCHEMISTRY
 MOUNT HINTON PROJECT

0 1 2 km
 UTM ZONE 8, NAD 83, 105M14 and 15, Contour interval: 100 ft.
 FILE: .2018\MOUNT HINTON DATE: JANUARY 2019

Additional UKHM soil anomalies

Property boundary

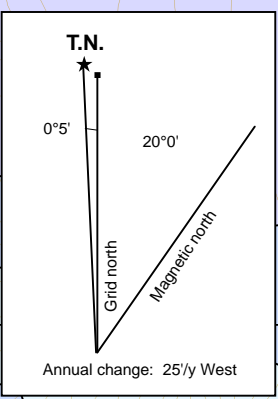
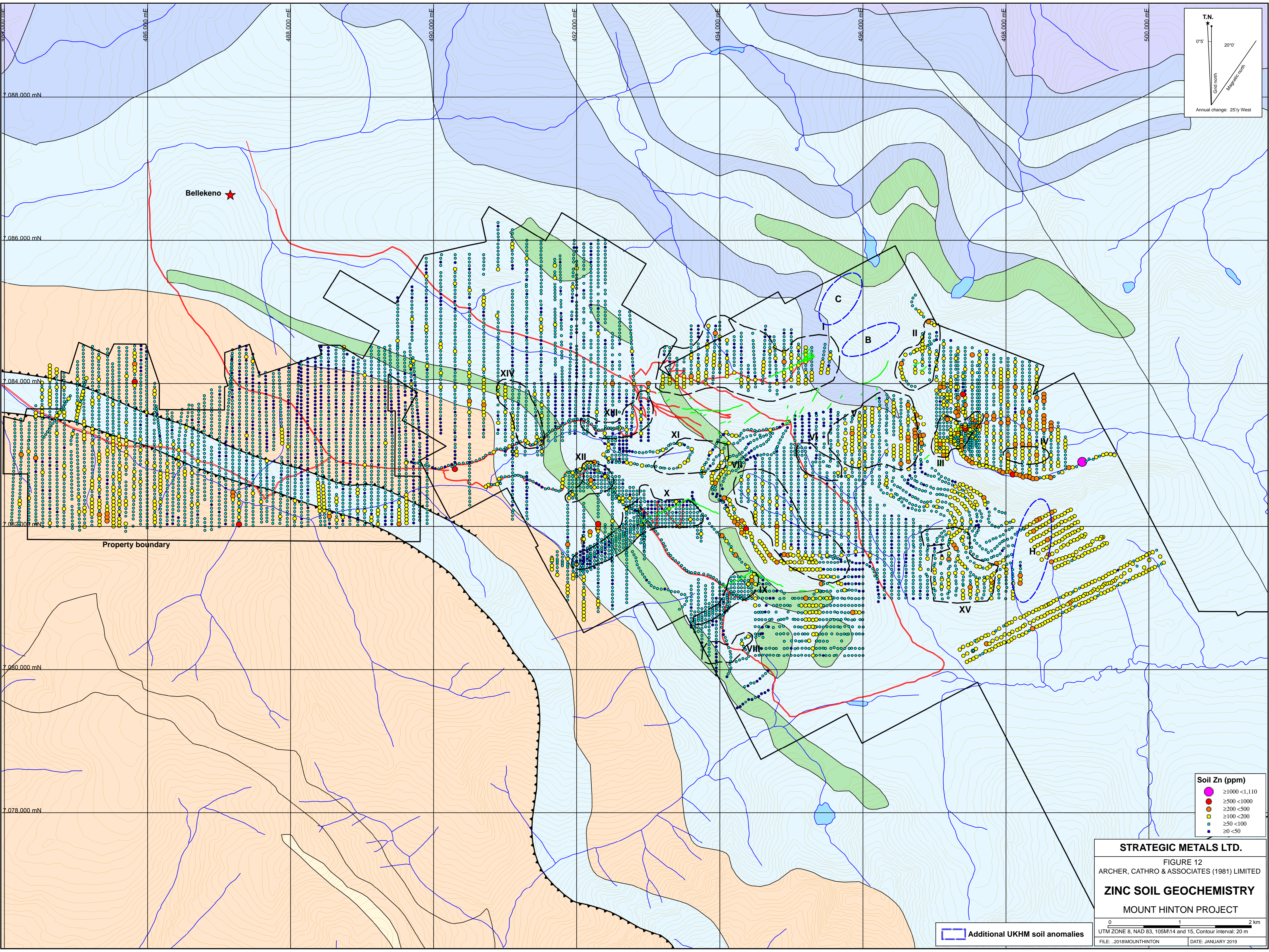
Bellekeno ★



STRATEGIC METALS LTD.
 FIGURE 11
 ARCHER, CATHRO & ASSOCIATES (1981) LIMITED
LEAD SOIL GEOCHEMISTRY
 MOUNT HINTON PROJECT

0 1 2 km
 UTM ZONE 8, NAD 83, 105M/14 and 15, Contour interval: 100 ft.
 FILE: 2018MOUNTHINTON DATE: JANUARY 2019

Additional UKHM soil anomalies



Soil Zn (ppm)	
●	≥1000 <1,110
●	≥500 <1000
●	≥200 <500
●	≥100 <200
●	≥50 <100
●	≥20 <50

STRATEGIC METALS LTD.
 FIGURE 12
 ARCHER, CATHRO & ASSOCIATES (1981) LIMITED
ZINC SOIL GEOCHEMISTRY
 MOUNT HINTON PROJECT

0 1 2 km
 UTM ZONE 8, NAD 83, 105M14 and 15, Contour interval: 20 m
 FILE: .2018MOUNTHINTON DATE: JANUARY 2019

Additional UKHM soil anomalies

Property boundary

Bellekeno ★

XII

X

C

B

II

III

XV

H

XVIII

XIII

XIV

7,088,000 mN

7,086,000 mN

7,084,000 mN

7,082,000 mN

7,080,000 mN

7,078,000 mN

486,000 mE

488,000 mE

490,000 mE

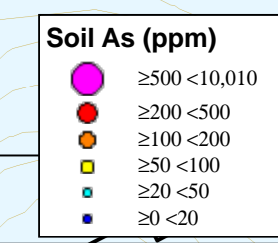
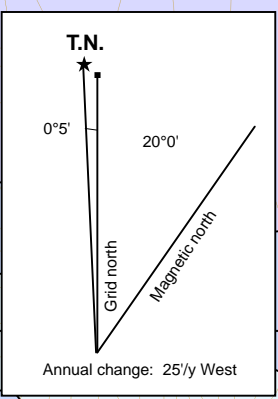
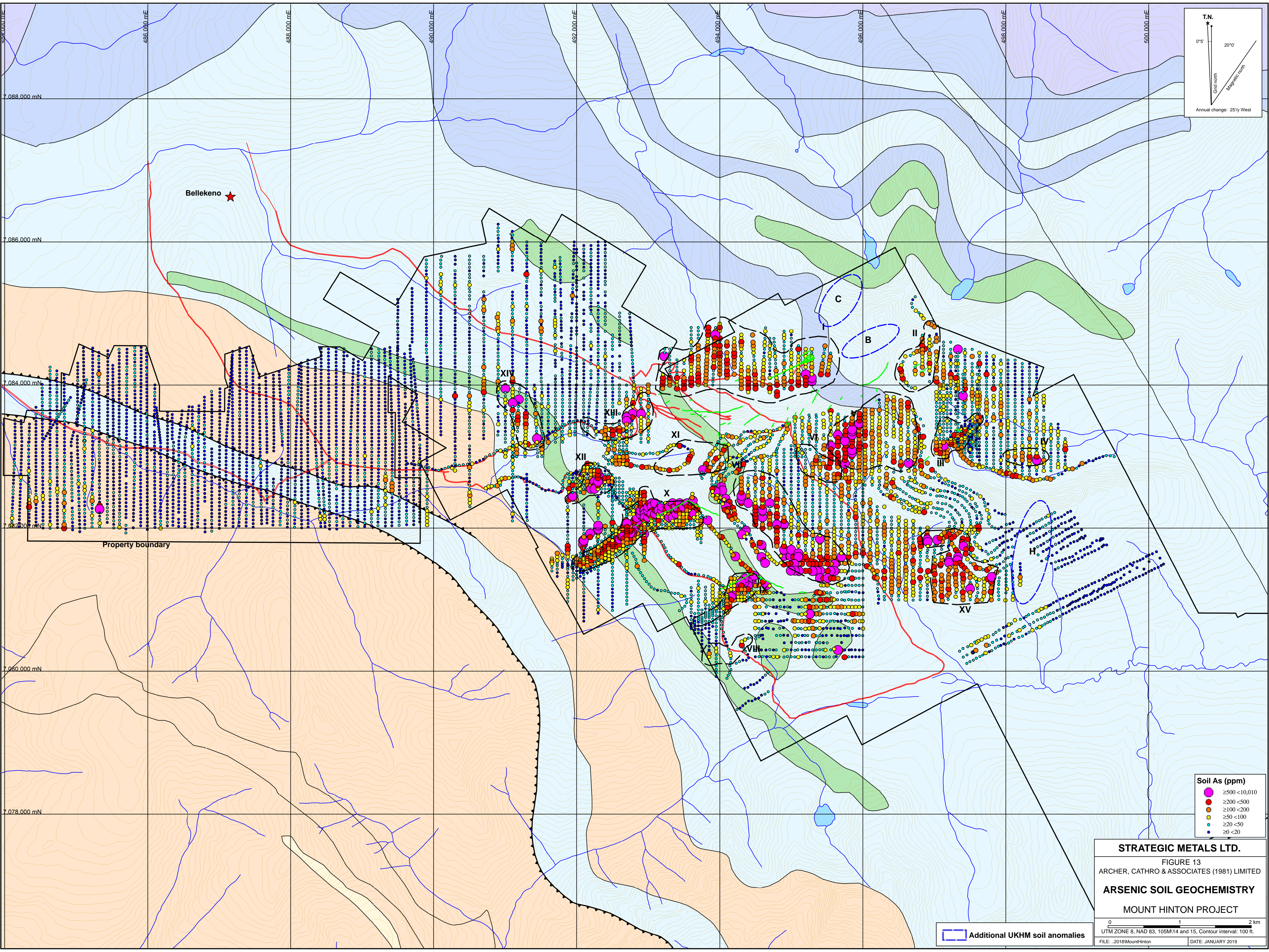
492,000 mE

494,000 mE

496,000 mE

498,000 mE

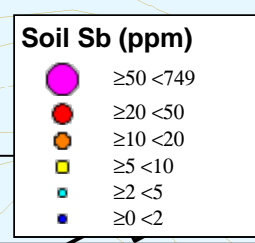
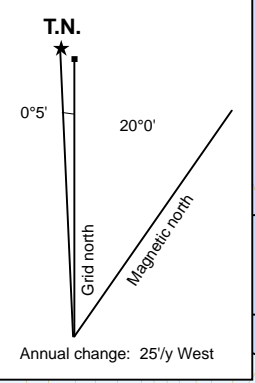
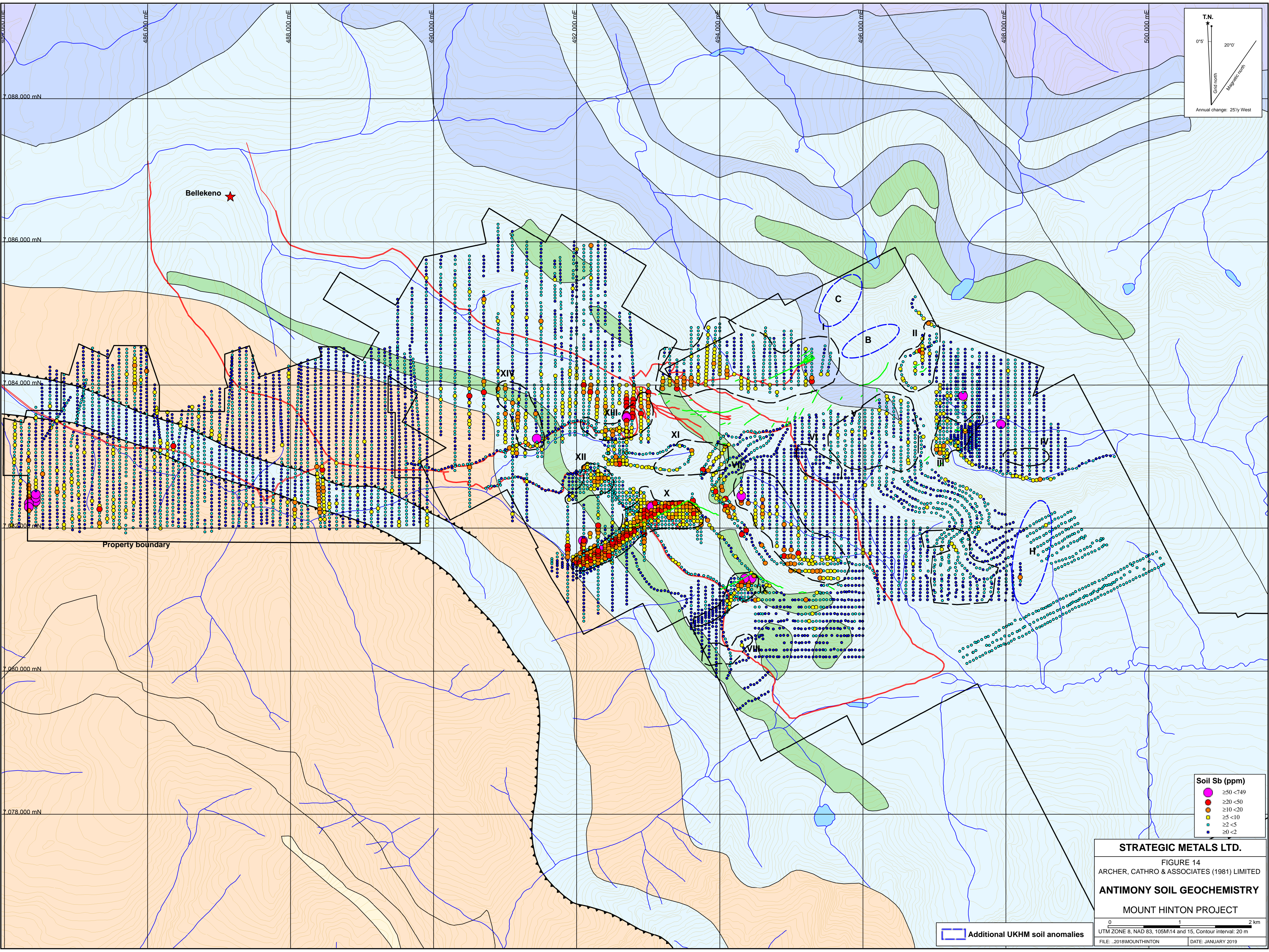
500,000 mE



STRATEGIC METALS LTD.
 FIGURE 13
 ARCHER, CATHRO & ASSOCIATES (1981) LIMITED
ARSENIC SOIL GEOCHEMISTRY
 MOUNT HINTON PROJECT

0 1 2 km
 UTM ZONE 8, NAD 83, 105M14 and 15, Contour interval: 100 ft.
 FILE: .\2018\MountHinton DATE: JANUARY 2019

 Additional UKHM soil anomalies



STRATEGIC METALS LTD.
 FIGURE 14
 ARCHER, CATHRO & ASSOCIATES (1981) LIMITED
ANTIMONY SOIL GEOCHEMISTRY
 MOUNT HINTON PROJECT

0 1 2 km
 UTM ZONE 8, NAD 83, 105M14 and 15, Contour interval: 20 m
 FILE: .2018MOUNTHINTON DATE: JANUARY 2019

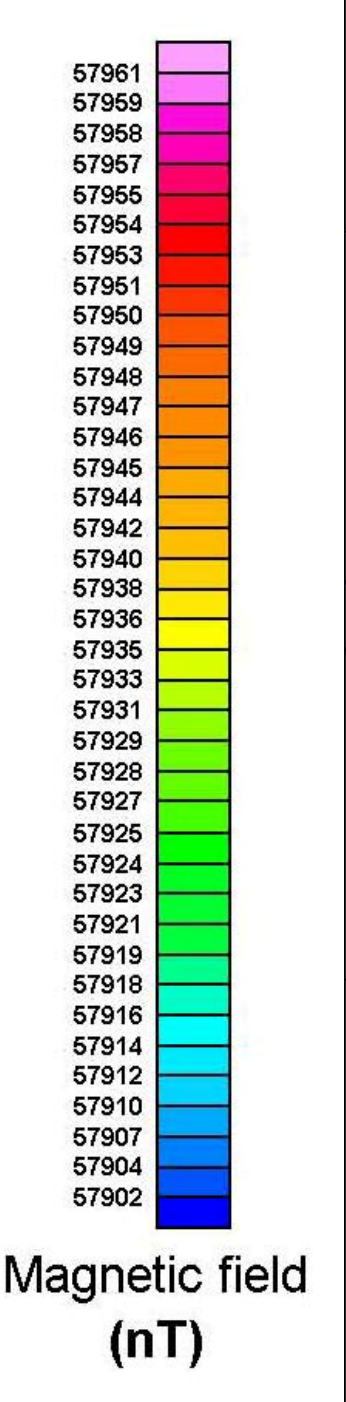
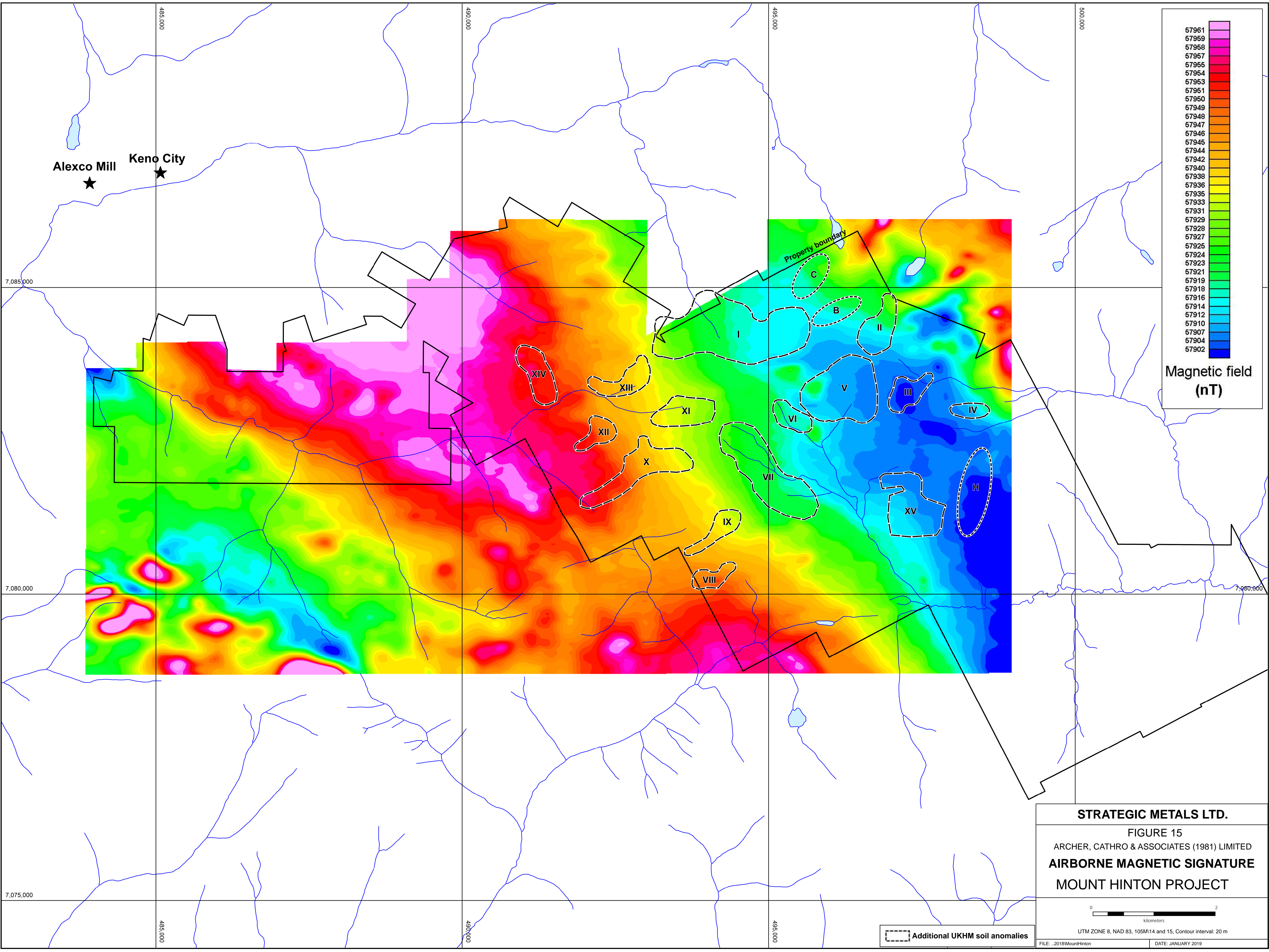
 Additional UKHM soil anomalies

Property boundary

Bellekeno ★

I
 II
 III
 IV
 V
 VI
 VII
 VIII
 IX
 X
 XI
 XII
 XIII
 XIV

A
 B
 C
 H



STRATEGIC METALS LTD.

FIGURE 15

ARCHER, CATHRO & ASSOCIATES (1981) LIMITED

AIRBORNE MAGNETIC SIGNATURE

MOUNT HINTON PROJECT

0 2
kilometers

UTM ZONE 8, NAD 83, 105M14 and 15, Contour interval: 20 m

FILE: ..2018\MountHinton DATE: JANUARY 2019

Additional UKHM soil anomalies