

**STRATEGIC METALS LTD.**

FIGURE 7  
 ARCHER, CATHRO & ASSOCIATES (1981) LIMITED

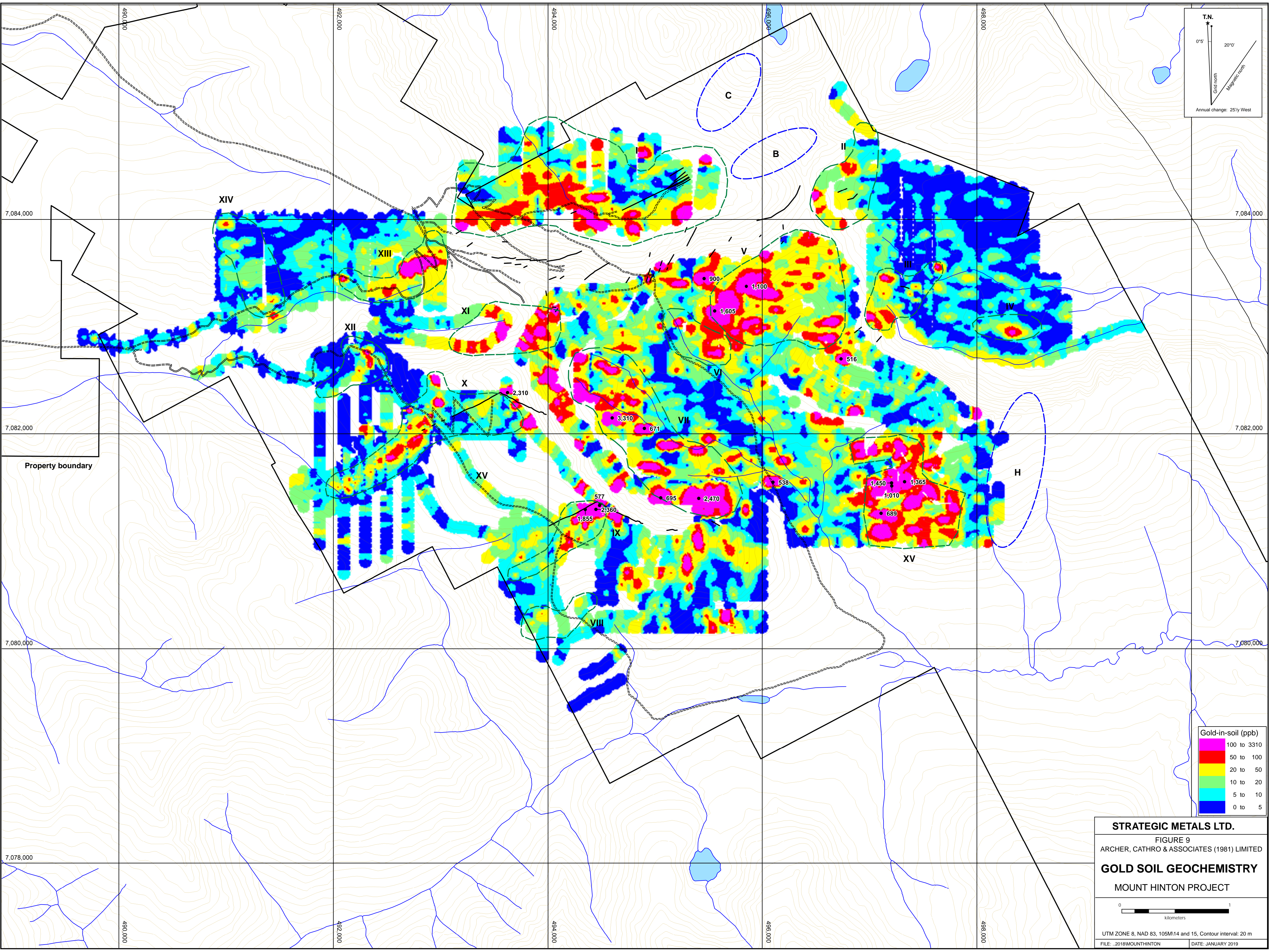
**ROCK SAMPLE LOCATIONS**

MOUNT HINTON PROJECT

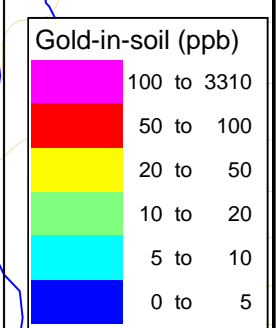
0 500  
 metres

UTM ZONE 8, NAD 83, 105M14 and 15, Contour interval: 20 m

FILE: :2018\MOUNTHINTON DATE: JANUARY 2019



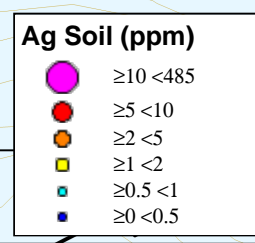
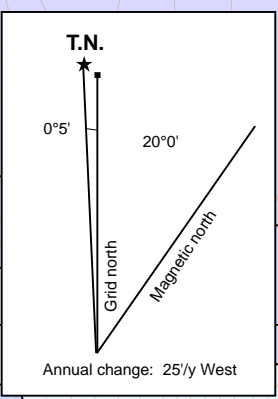
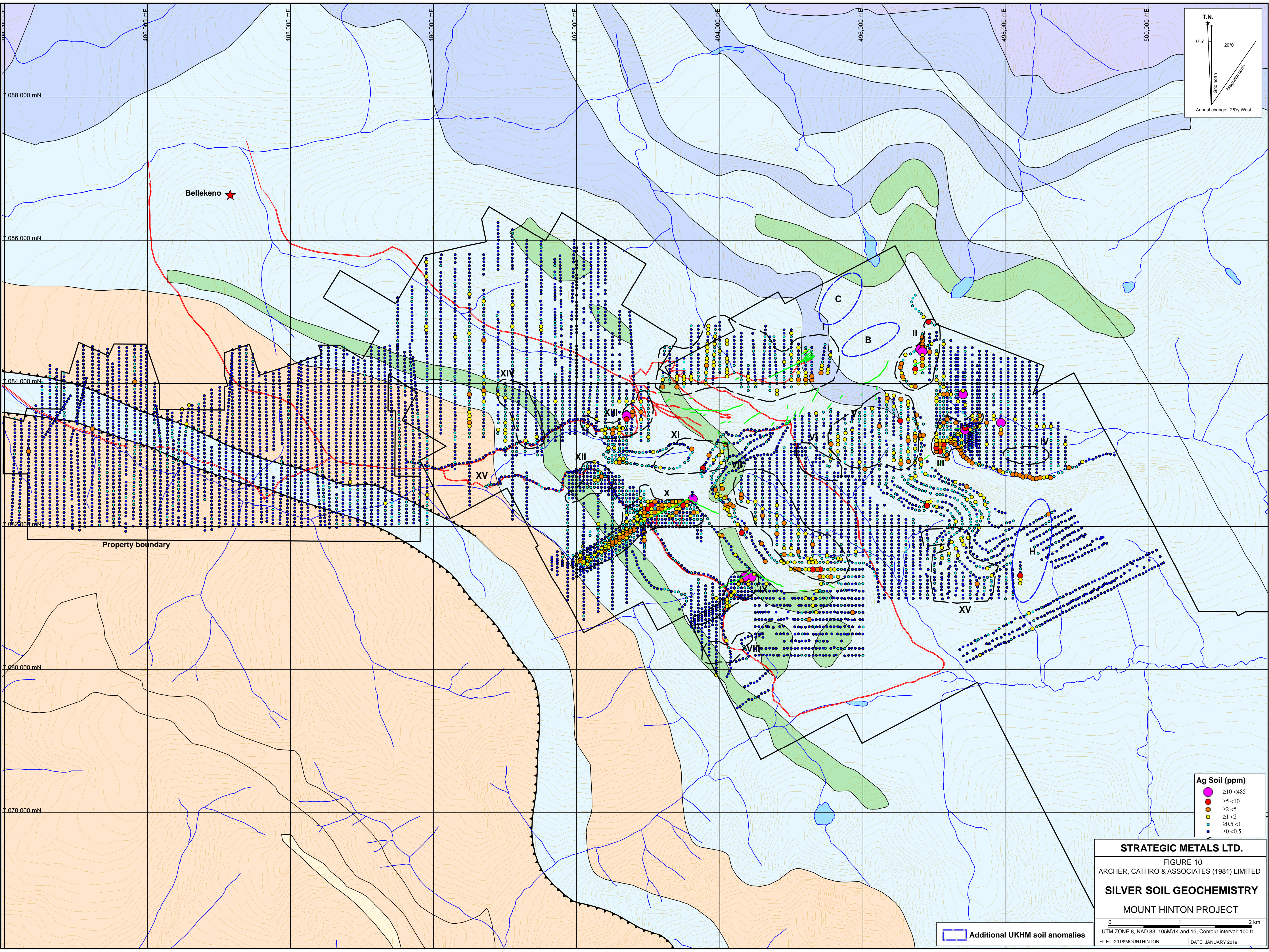
T.N.  
 0°5' 20°0'  
 Grid north  
 Magnetic north  
 Annual change: 25'/y West



**STRATEGIC METALS LTD.**  
 FIGURE 9  
 ARCHER, CATHRO & ASSOCIATES (1981) LIMITED  
**GOLD SOIL GEOCHEMISTRY**  
 MOUNT HINTON PROJECT

0 1  
 kilometers

UTM ZONE 8, NAD 83, 105M14 and 15, Contour interval: 20 m  
 FILE: .2018MOUNTHINTON DATE: JANUARY 2019



**STRATEGIC METALS LTD.**  
 FIGURE 10  
 ARCHER, CATHRO & ASSOCIATES (1981) LIMITED  
**SILVER SOIL GEOCHEMISTRY**  
 MOUNT HINTON PROJECT

0 1 2 km  
 UTM ZONE 8, NAD 83, 105M14 and 15, Contour interval: 100 ft.  
 FILE: .2018MOUNTHINTON DATE: JANUARY 2019

Additional UKHM soil anomalies

Property boundary

Bellekeno ★

XV

XII

XI

X

C

B

II

III

XV

H

XVII

XIV

XIII

7,084,000 mN

486,000 mE

7,086,000 mN

7,088,000 mN

492,000 mE

494,000 mE

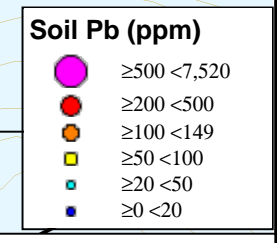
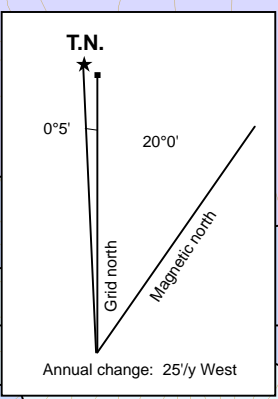
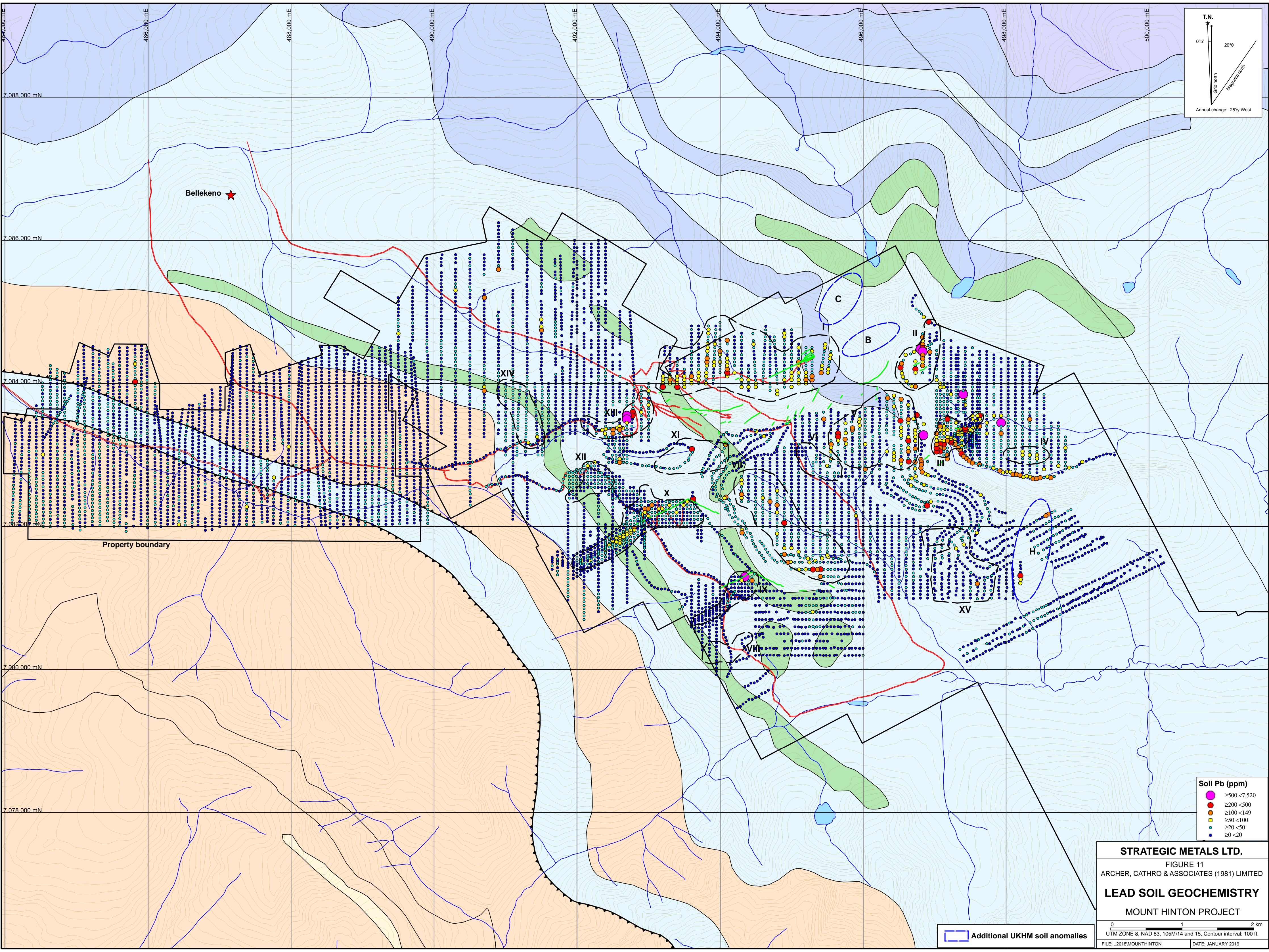
496,000 mE

498,000 mE

500,000 mE

7,080,000 mN

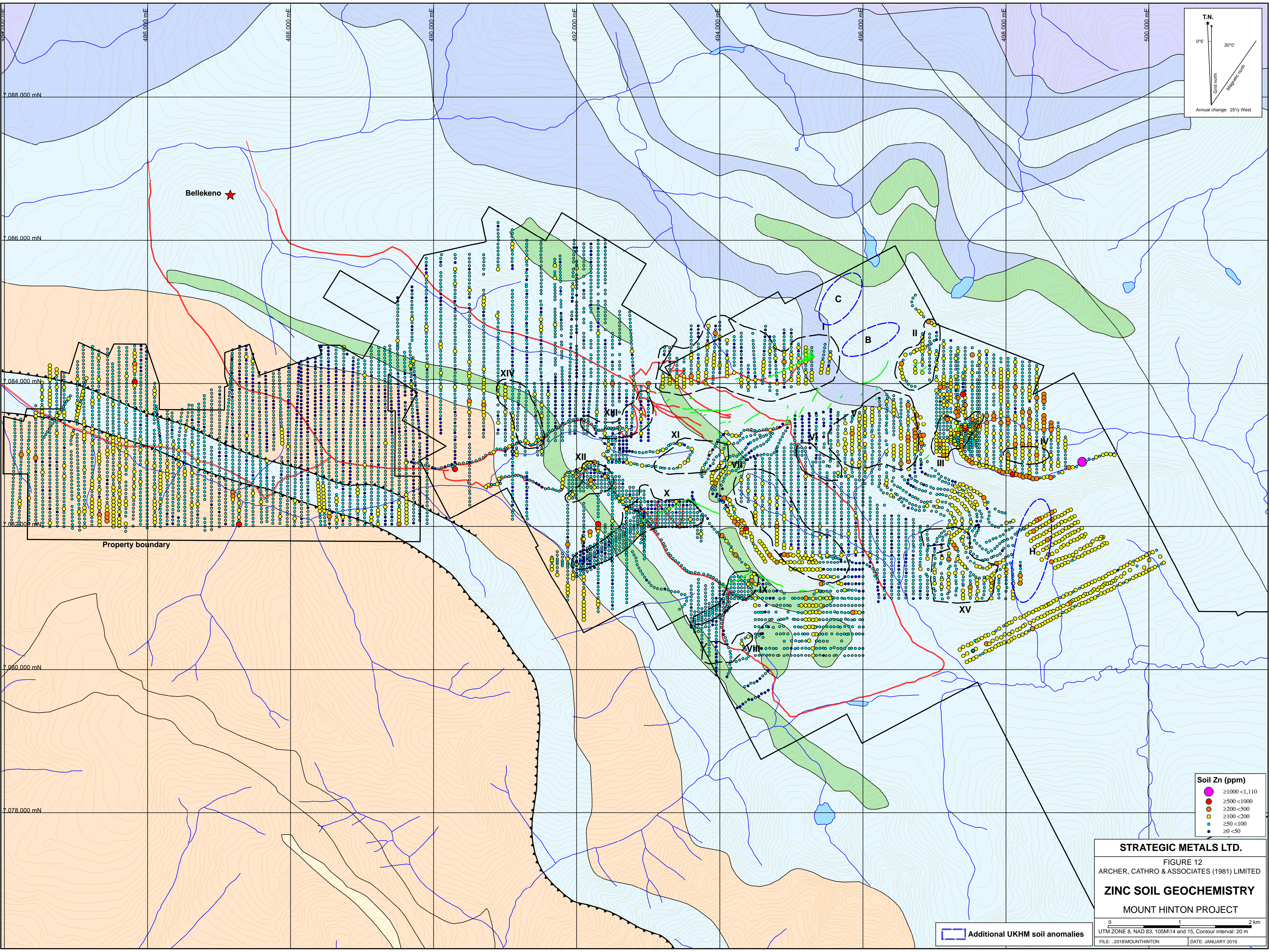
7,078,000 mN



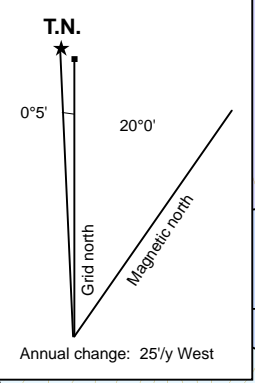
Additional UKHM soil anomalies

**STRATEGIC METALS LTD.**  
 FIGURE 11  
 ARCHER, CATHRO & ASSOCIATES (1981) LIMITED  
**LEAD SOIL GEOCHEMISTRY**  
 MOUNT HINTON PROJECT

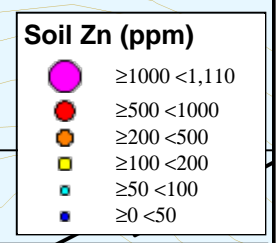
0 1 2 km  
 UTM ZONE 8, NAD 83, 105M/14 and 15, Contour interval: 100 ft.  
 FILE: 2018MOUNTHINTON DATE: JANUARY 2019



Bellekeno ★



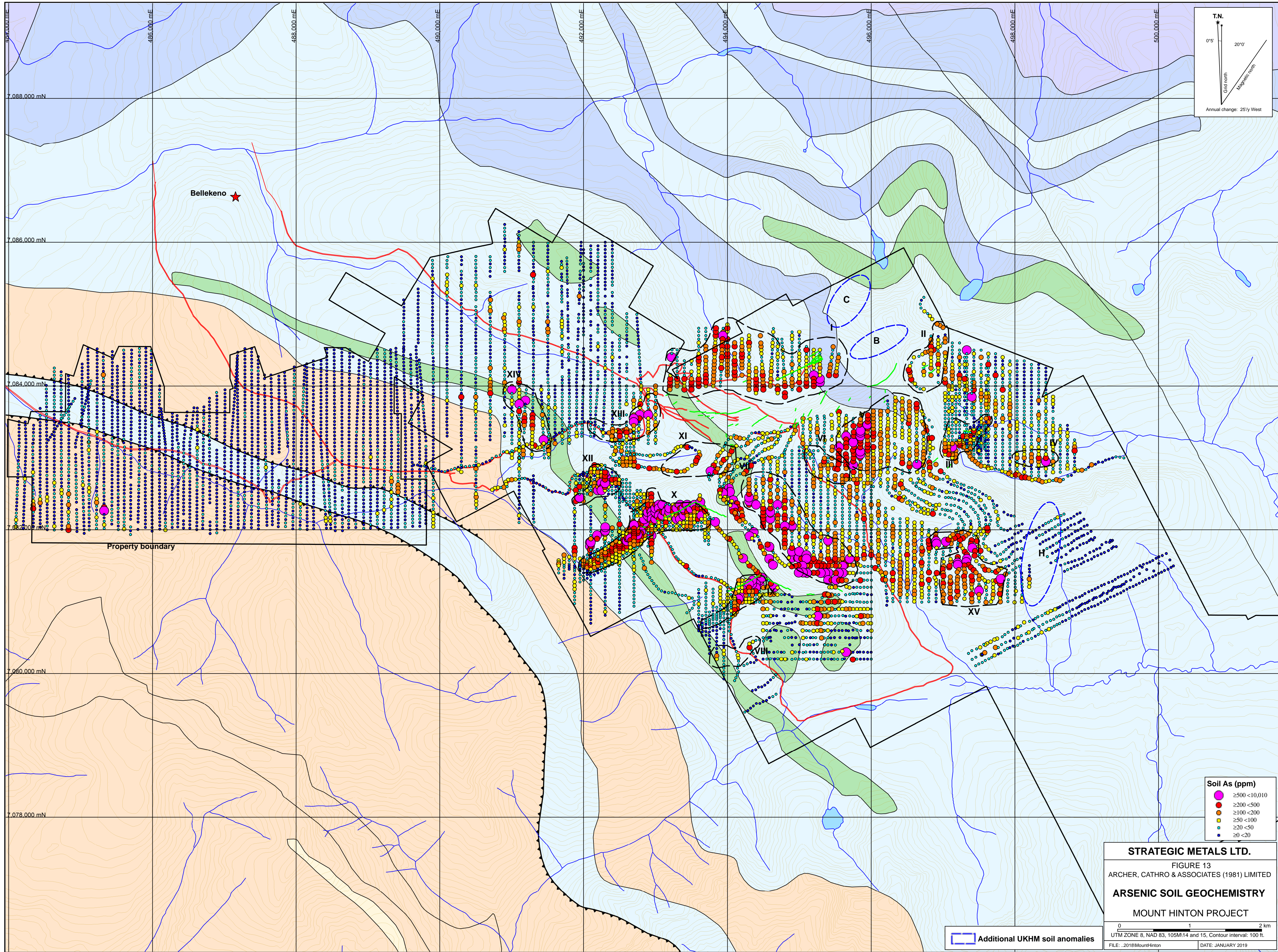
Property boundary



**STRATEGIC METALS LTD.**  
 FIGURE 12  
 ARCHER, CATHRO & ASSOCIATES (1981) LIMITED  
**ZINC SOIL GEOCHEMISTRY**  
 MOUNT HINTON PROJECT

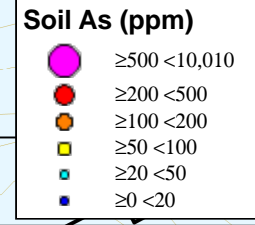
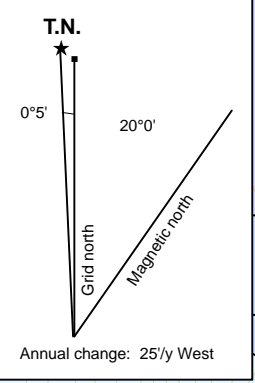
0 1 2 km  
 UTM ZONE 8, NAD 83, 105M14 and 15, Contour interval: 20 m  
 FILE: .2018MOUNTHINTON DATE: JANUARY 2019

  Additional UKHM soil anomalies



Bellekeno ★

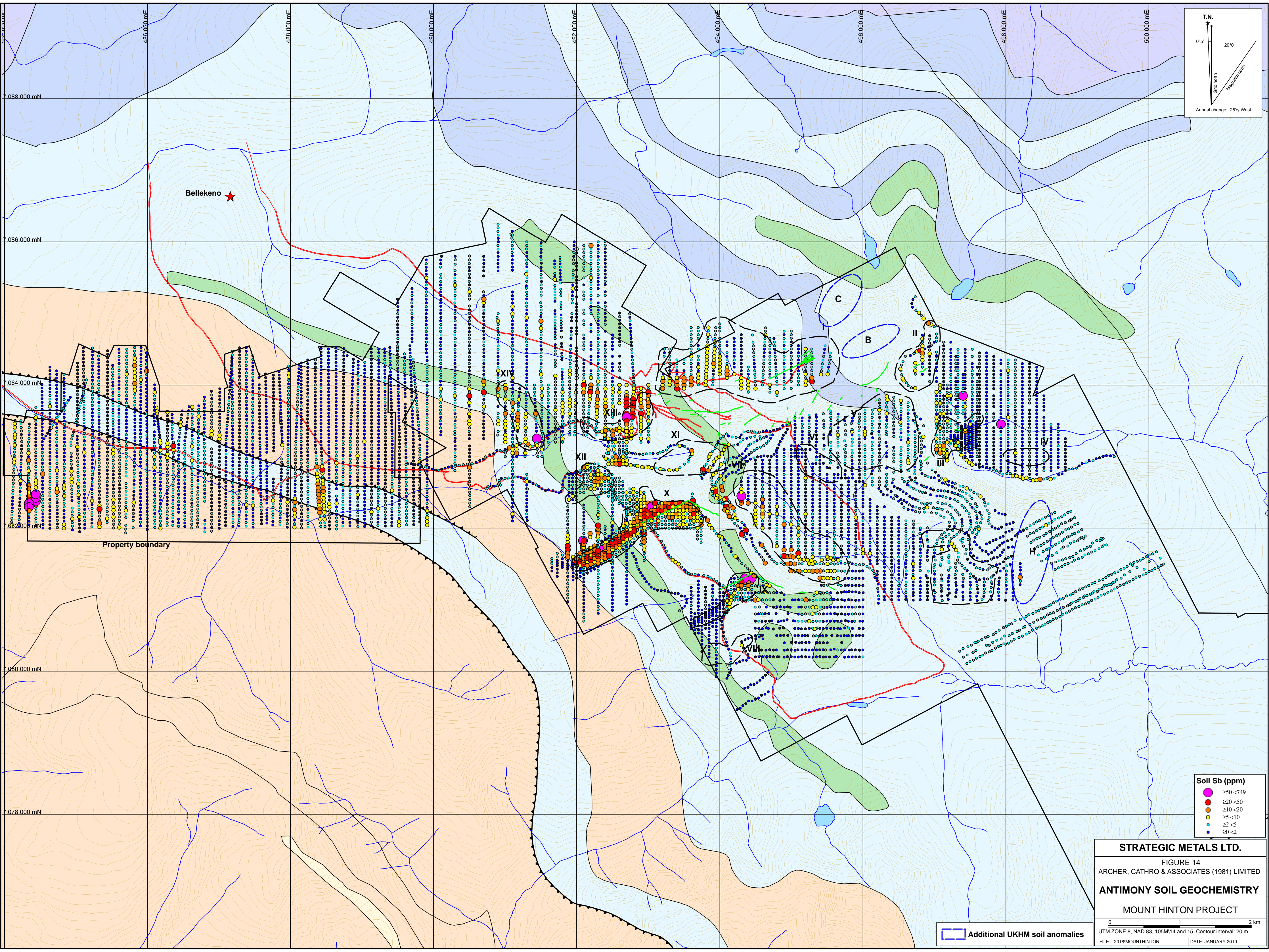
Property boundary



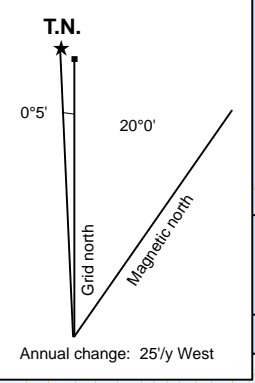
Additional UKHM soil anomalies

**STRATEGIC METALS LTD.**  
 FIGURE 13  
 ARCHER, CATHRO & ASSOCIATES (1981) LIMITED  
**ARSENIC SOIL GEOCHEMISTRY**  
**MOUNT HINTON PROJECT**

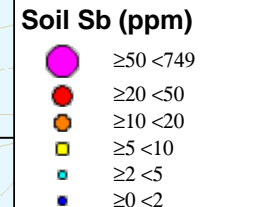
0 1 2 km  
 UTM ZONE 8, NAD 83, 105M14 and 15, Contour interval: 100 ft.  
 FILE: \2018\MountHinton DATE: JANUARY 2019



Bellekeno ★



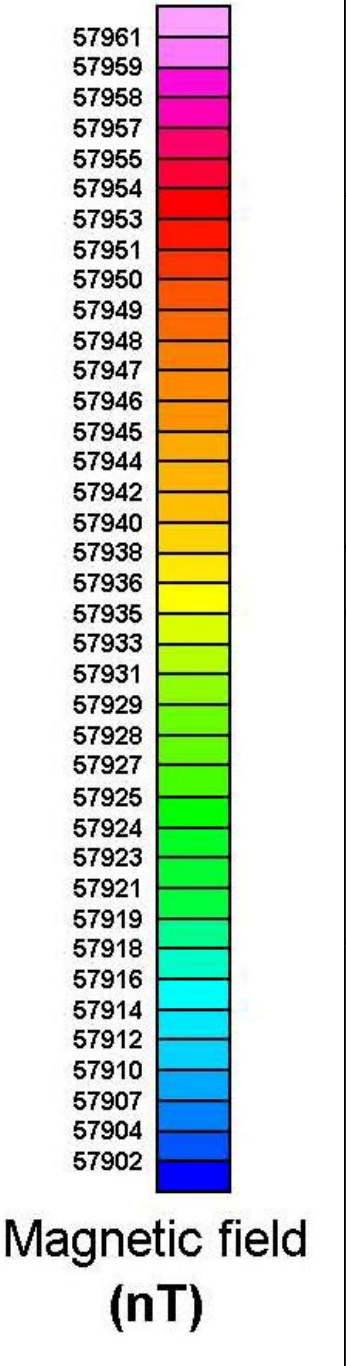
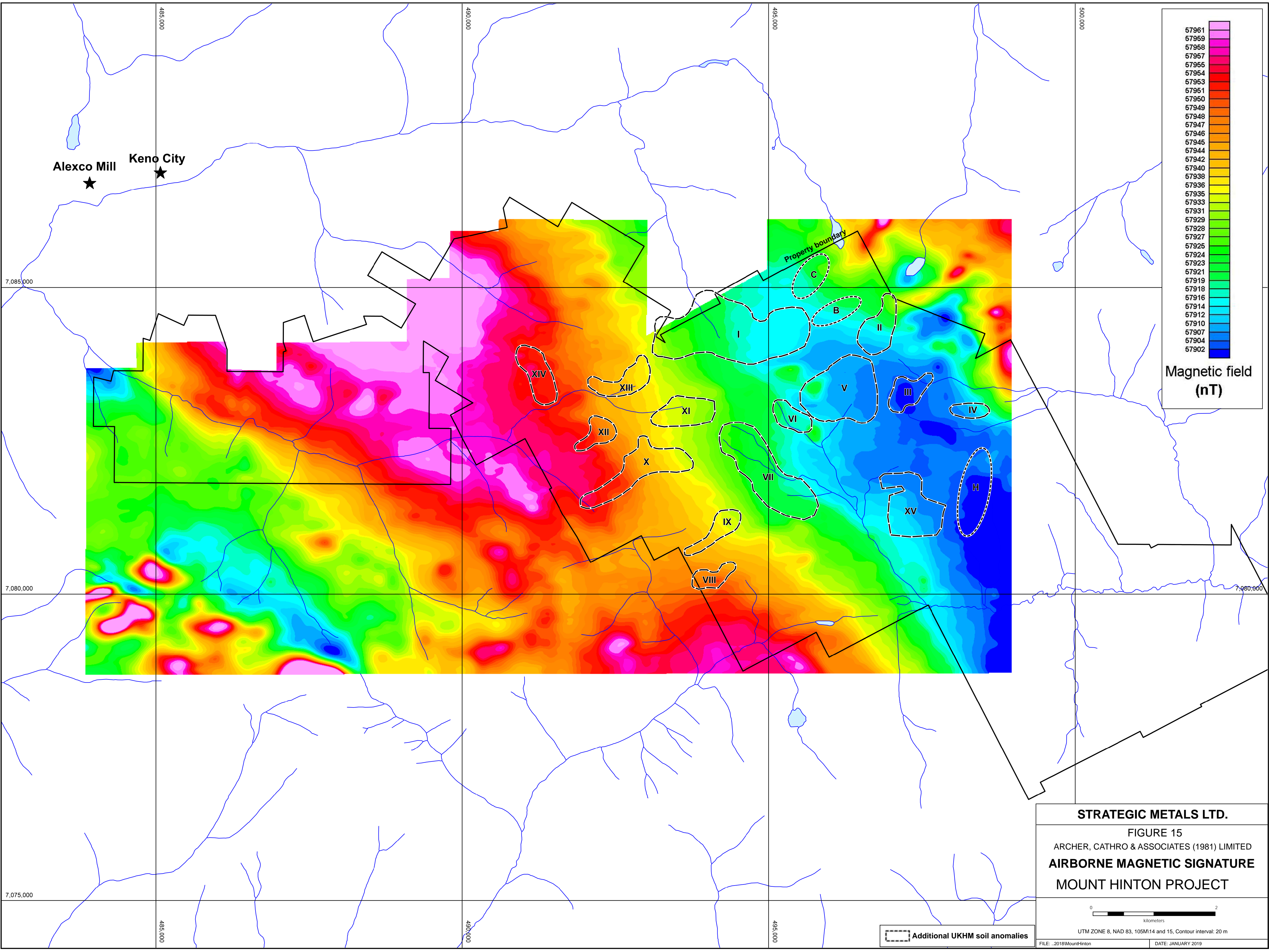
Property boundary



Additional UKHM soil anomalies

**STRATEGIC METALS LTD.**  
 FIGURE 14  
 ARCHER, CATHRO & ASSOCIATES (1981) LIMITED  
**ANTIMONY SOIL GEOCHEMISTRY**  
 MOUNT HINTON PROJECT

0 1 2 km  
 UTM ZONE 8, NAD 83, 105M/14 and 15, Contour interval: 20 m  
 FILE: .2018/MOUNTHINTON DATE: JANUARY 2019



**STRATEGIC METALS LTD.**

FIGURE 15

ARCHER, CATHRO & ASSOCIATES (1981) LIMITED

**AIRBORNE MAGNETIC SIGNATURE**

**MOUNT HINTON PROJECT**

0 2  
kilometers

UTM ZONE 8, NAD 83, 105M14 and 15, Contour interval: 20 m

FILE: ..2018\MountHinton DATE: JANUARY 2019

Additional UKHM soil anomalies