

2019 YMEP Final Report:
The Focused Regional Raw Geef Project

61.156753°, - 134.068479°
Whitehorse Mining District

Author and Grant Recipient: Ryan Bachynski

Table of Contents

Introduction.....	3
Previous Exploration.....	3
2019 Field Work and Results	9
Mapping	11
Future Work Recommendations.....	14

Introduction

Work for the 2019 exploration program took place from May 24-June 2, 2019. Three field persons were involved in the collection of 273 soil samples and 19 rock samples in addition to localized geological mapping.

The goal of the 2019 program was to sample sediments in a previously identified area of interest and determine if any geochemical correlations could be made with known mineralization and airborne magnetic data and to see if any new geochemical anomalies were identifiable.

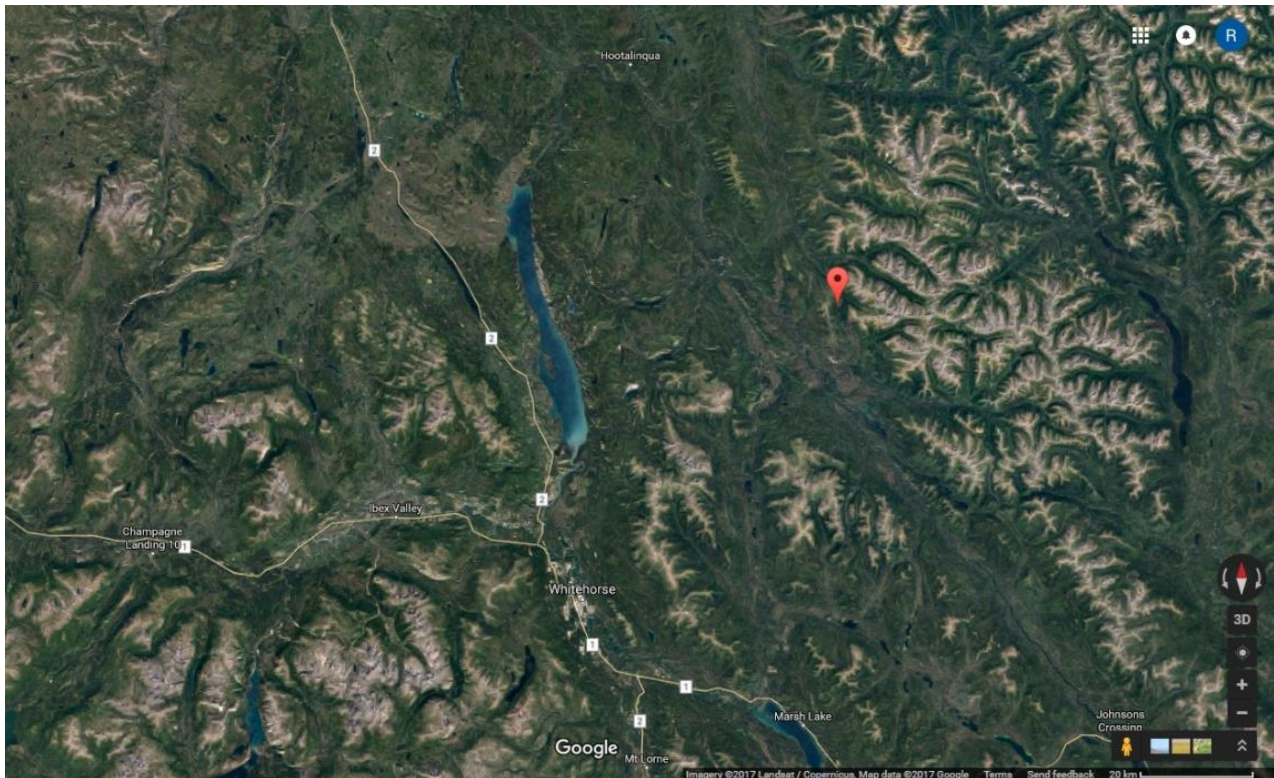


Figure 1: Project area relative to Whitehorse

Previous Exploration

The area staked under the Raw Geef claims (Raw Geef 1-66; see attached *Claim Location and Numbers* map) was indicated to have recently been staked by Golden Predator and evidence in the field was found of other historical staking of unknown extent.

Despite being previously staked, searches with the government in their database did not reveal any information in the map sheet of this project (105 E 01) that was directly related to the area of this project. The only geological information known prior to working was a fairly vague geological map (Figure 2).

The east end of the claim block contains a massive medium-grained intrusive that is interpreted to be tonalitic to granodioritic and occasionally granitic with uncommon and cm-scale diabase units. West of the intrusives are meta-sedimentary rocks that are finely layered and typically pelitic with psammopelitic portions and occasionally contain high carbonate content.



Figure 2: Preliminary geological map of the area found on the Yukon Government's database

A seemingly small intrusive stock, that could actually be related to or a part of the large pluton immediately to the east, is located in the approximate center of the claim block.

During exploration of the area in the 2017 and 2018 field seasons, “rust bleeds” (Figure 3 & 4) were observed quite frequently within the aforementioned intrusive unit. Further investigations lead to an obvious association of rust bleeds with mineralized quartz veining. Fresh samples revealed molybdenite and pyrite that occurred both disseminated and in bands (along fractures? – Figure 5).



Figure 3: Rust bleeds depicted by yellow arrows. Field assistant for scale



Figure 4: Close up photo of rust bleed coming off of a discontinuous quartz vein. Yellow to white botryoidal gossan was observed to be quite prominent on some rust bleeds.



Figure 5: Molybdenite and pyrite within intrusion-hosted quartz veining

Sampling of intrusion related veining revealed consistently elevated Mo, Bi, Ag, and Pb values. Their respective highest values are 2280ppm Mo, 1745ppm Bi, 35.1ppm Ag, and 1625ppm Pb. The intrusive host of these veins was approximately outlined while in the field and later correlated to a magnetic low in geophysical maps available from the Yukon Government. Field work in 2019 observed several small-scale dextral faults offsetting the mineralized veins.

In the north-central portion of the project area, satellite images showed a red hue in the area and field observations identified a scree slope with extremely abundant gossanous flakes covering a hillside with an estimated area of at least 2km² (Figure 7). No sulphides were observed in the gossanous chips. Just over 500m to the southeast a 4-5m thick strongly gossanous unit that appeared to be traceable for at least several hundred meters is exposed on the west side of a steep, north-south trending valley (Figure 8 & 9). This area was the second primary target for the 2018 field season.

This unit is flanked by more weakly gossanous units on either side. The gossanous units are strongly folded and appear to be traceable across to the east side of the valley, albeit significantly higher in elevation and difficult to reach. The unit has a mudstone protolith and contains varying extents of cm-scale quartz veining. Sample results do not appear to show any significant anomalies.

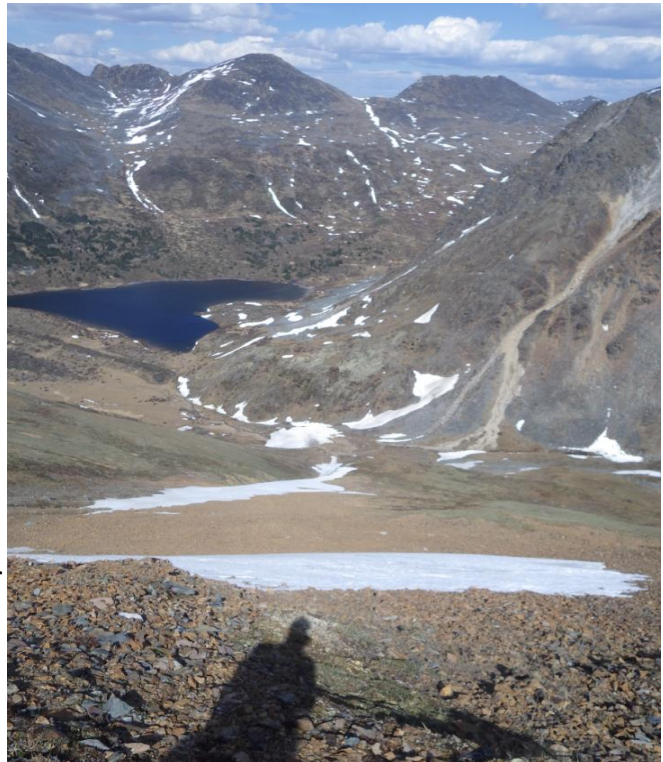


Figure 7: View looking north with abundant gossanous chips on the mountain-side.

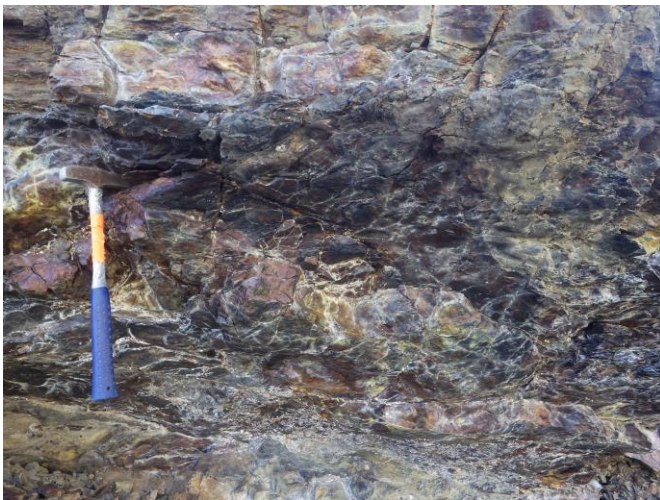


Figure 8: Close up of strongly gossanous layer.



Figure 9: View looking north attempting to depict the lateral continuity of the gossanous units.

Due to the difficulty of obtaining a relatively fresh sample with conventional rock-hammer/chisel methods, a Hilti drill was commissioned to drill a grid into the unit of interest and Dexpan expanding grout was used to emphasize any pre-existing fractures with hopes that larger and deeper samples could be obtained (Figures 10 through 12). Initially, a peacock-like sheen was interpreted to be related to chalcopyrite but further evaluation concluded it to be the result of a more ‘oil rainbow’-like phenomena.



Figure 10: Drilling grid marked in white China marker



Figure 11: Field assistant drilling grid.



Figure 12: Typical rusty mudstone with varying extends of quartz mineralization

The current interpretation for these gossan zones is that they are a sedimentary-hosted aureole zone related to adjacent intrusions.

The third, target on the property that was discovered in 2018 is just upstream from the intrusion-hosted veining. The unit is characterized by a dark, muddy colour but with a siliceous texture, pyrite-filled pods (up to 3x3cm), and quartz veining that often depicts several generations of vein events (Figures

13-15). A few fragments of the unit were noticed along the stream bed near the intrusion-related veining and traced back up to their *in-situ* source (Figure 15). Lithogeochemical sample results do not appear to show any anomalies. This unit is also interpreted to be related to later intrusive events.



Figure 13: Pyrite-filled pods within siliceous, dark rock



Figure 14: Abundant fine-grained pyrite within quartz vein with several generations of veining apparent



Figure 15: The outcrop source of pyritic, quartz-veining, siliceous mudstone fragments found near the intrusion-hosted veining a few hundred meters downstream

2019 Field Work and Results

Collection of 19 rock samples and 273 soil samples occurred over 10 field days, in addition to localized mapping. Samples were dropped off at ALS Geochemistry in Whitehorse to begin analytical procedures immediately after returning from the field.

Rock samples were collected to test various outcrops that were not sampled in previous seasons and to attempt to further verify the newly discovered mineralized zone. Results confirmed previously discovered mineralization in veining but failed to identify any new anomalous zones of interest.

Soil samples are noted to mostly be derived from colluvium or till parent material and are typically silty \pm sandy.

A statistical approach to looking at soil sample anomalies has been used to try and isolate zones of

interest. A suite of 11 potential pathfinder elements, consisting of Au, Ag, As, Bi, Mo, Ni, Pb, Sb, Te, W, and Zn, are the focus of these statistical analyses. These elements are recognized in literature as pathfinder elements for intrusive-hosted gold systems and are also related to mineralization on the property (e.g. Mo or Bi).

For each of these elements, the 273 sample sites were used to define an interquartile range (IQR) between the 1st and 3rd quartiles. If any sample location contained values $> \text{IQR} \times 1.5$, they are considered anomalous and assigned a value of “1”. Since analysis is taking place on a suite of 11 elements, the theoretical strongest anomaly would be a value of 11 which would imply that every pathfinder element at that particular sample location received a value of “1” and is anomalous. However, such a highly anomalous result is conceivably unlikely due to the poorly understood definition of pathfinder elements related to this project and, consequently, the highest value recorded is a 7 for sample V412217.

In Figure 16, the results of such analyses depict a fairly well-defined zone of anomalous results with a notable spatial proximity to the recently discovered intrusion-hosted veining that is potentially related to Au anomalies in stream sediment datasets. It is unclear if previous glacial influence on sample material could “smear” the mineralized zone into a broader area or if these results are more indicative of vertical ion transport and consequently suggest that mineralization is present below overburden in these anomalous zones.

Airborne geophysics depicting 2nd vertical derivative magnetics can be seen on the sample map. It has previously been identified that a magnetic low is associated with the mineralized intrusive, as determined through outcrop mapping, and it has been theorized that other lows along a NW trending zone are likely similar plutons. However, the most notable correlation between the anomalous zones and 2nd derivative magnetics appears to be with the magnetic high cutting the project area approximately N-S, which is coincident with a probable regional fault.

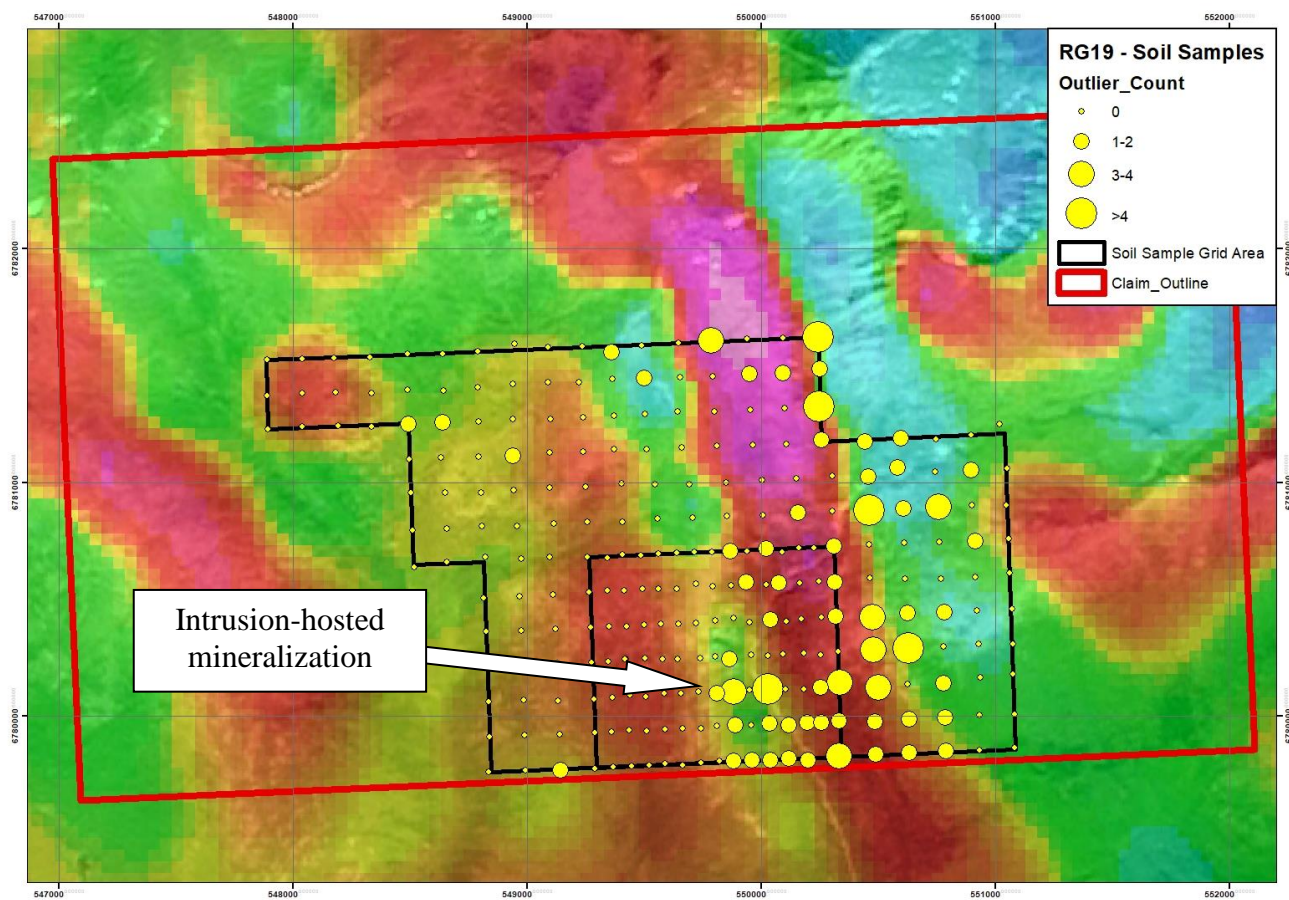


Figure 16: Outlier/anomaly counts related to a particular suite of elements overlain on 2nd vertical derivative airborne magnetics.

Mapping

Preliminary geological mapping took place along the river in proximity to the mineralized pluton (Figure 17) and a strong correlation between the mineralized pluton and a magnetic low in 2nd derivative magnetics can be observed in Figure 18. The units consist of the following:

Argillite

Strongly gossanous and pyritic argillite unit. Average of 5% pyrite, mostly present in round vugs. Round and angular cherty clasts within – hydrothermal breccia (?). See Figures 13-15.

Carbonate Shale (?)

Carbonate-dominated shale-like rock with a cherty appearance. Strong folding. Local shaley appearance but overall the unit is dominated by calcite. Minor mm-scale ankerite layering.



Greenstone

Chloritic, often prominently layered. Epidote common. Common calcite/ankerite veining.



Meta-sandstone

Sandy to silty finely layered to massive unit. Minor interbeds of shaley or carbonaceous units.

Tonalite (?)

Orthoclase-plagioclase-quartz-muscovite \pm biotite. Hosts mineralized veining. Appears tonalitic. Massive. Medium grained.

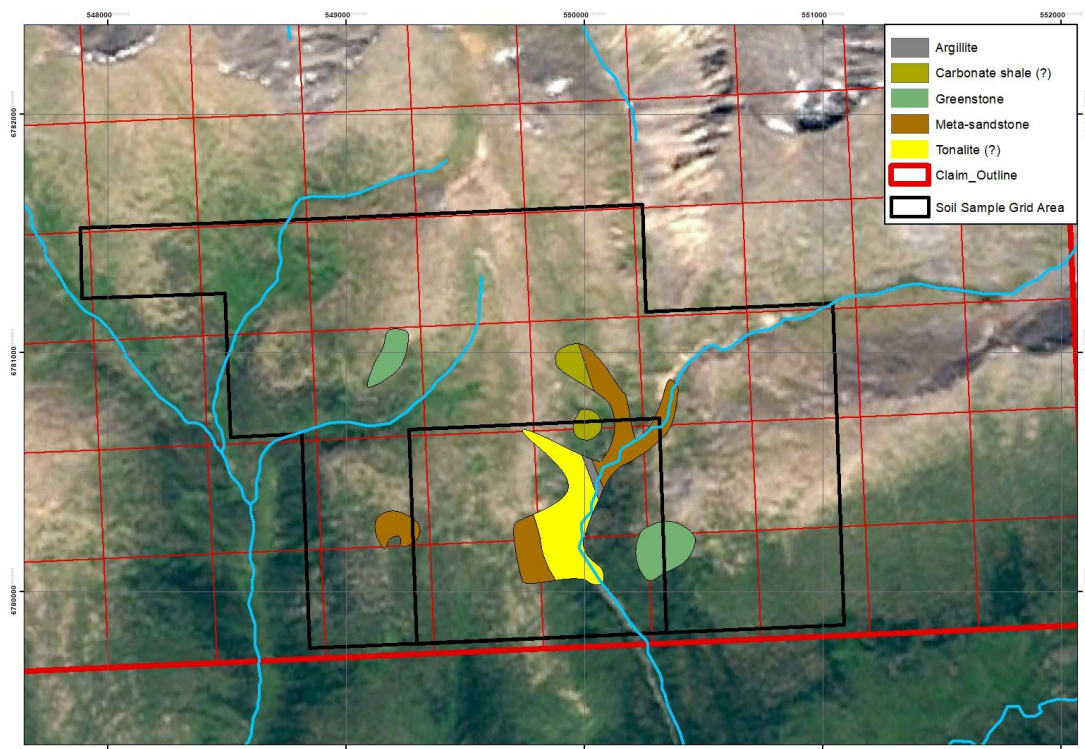


Figure 17: Preliminary geological mapping units, mostly from stations along the exposed bedrock from fluvial erosion,

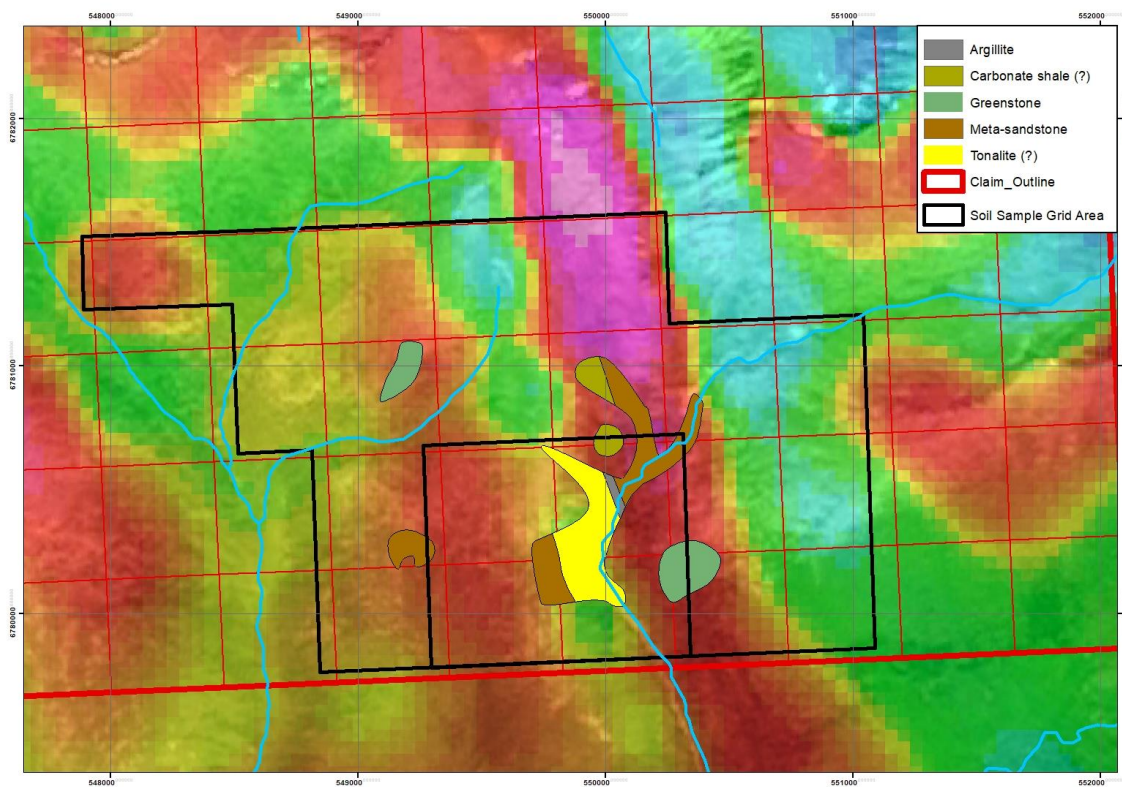


Figure 18: Geological mapping with 2nd derivative magnetics, showing a strong correlation with a magnetic low and the mineralized intrusion (depicted in yellow)

Future Work Recommendations

Future work should include trying to confirm the intrusion as the source of gold in stream sediment anomalies. This will likely require consultation with experts in the field of intrusion-related gold systems.

Sample #	UTM_X	UTM_Y	Date	Aspect	Topo_Pos	Drainage	Sample	Soil_Horiz	Parent_Material	Texture	Density	Colour	Angular_C	Clast_Com	Vegetation	Notes	
V412201	549821	6779808	2019-05-24	West	Bench	Moderate	30	B	Till	Silty-sandy	Medium	Light brow	30	Granitoid	Buck brush	Thin layer of loess ~1cm in soil profile	
V412202	549885	6779807	2019-05-24	East	Mid slope	Well	35	B	Colluvium	Silty-sandy	Medium	Dark brow	80	Granitoid	Buck brush		
V412203	549963	6779813	2019-05-24	East	Mid slope	Well	50	B	Colluvium	Silty-sandy	Medium	Dark brow	90	Granitoid	Buck brush, coniferous	Thin layer of loess ~1cm in soil profile	
V412204	550042	6779811	2019-05-24	East	Mid slope	Well	35	B	Colluvium	Silty-sandy	Medium	Light brow	80	Granitoid	Coniferous	Thin layer loess <1cm	
V412205	550120	6779819	2019-05-24	East	Mid slope	Well	30	B	Colluvium	Silty-sandy	Medium	Light brow	70	Granitoid	Buck brush/coniferous		
V412206	550203	6779810	2019-05-24	East	Mid slope	Well	15	B	Colluvium	Sandy	Medium	Light brow	60	Granitoid	Coniferous	Ground frozen, tough to penetrate. Two auger holes to fill soil bag, 30cm apart.	
V412207	550253	6779806	2019-05-24	West	Mid slope	Well	20	B	Colluvium	Silty-sandy	Low	Dark brow	60	Granitoid	buck brush, coniferous -- dense	Poor sampling conditions. Very thick brush w/ lots of boulders and roots. Soil frozen making it difficult to penetrate.	
V412208	550335	6779829	2019-05-24	West	Mid slope	Well	40	B	Colluvium	Silty	Medium	Dark brow	100	Granitoid	buck brush, coniferous	Ground froze, hard to penetrate	
V412209	550490	6779836	2019-05-24	South	Mid slope	Well	25	B	Colluvium	Silty-sandy	Medium	Light brow	80	Granitoid	Coniferous	Ground partially frozen, loess present <5cm	
V412210	550634	6779842	2019-05-24	South	Mid slope	Well	30	B	Colluvium	Silty-sandy	Medium	Light brow	90	Granitoid	Coniferous, buck brush	Minor loess ~2-5cm	
V412211	550792	6779852	2019-05-24	Southeast	Mid slope	Well	20	B	Colluvium	Silty-sandy	Medium	Light brow	80	Granitoid	Coniferous, buck brush		
V412212	550934	6779853	2019-05-24	Southeast	Mid slope	Well	30	B	Colluvium	Silty-sandy	Medium	Light brow	70	Granitoid	Coniferous, buck brush		
V412213	551086	6779864	2019-05-24	Southeast	Mid slope	Well	30	B	Colluvium	Silty-sandy	Medium	Light brow	90	Granitoid	Coniferous, buck brush		
V412214	551076	6780310	2019-05-24	Southeast	Mid slope	Well	50	B	Colluvium	Silty-sandy	Medium	Brown	80	Granitoid	Coniferous, buck brush		
V412215	550929	6780307	2019-05-24	South	Mid slope	Well	60	B	Colluvium	Silty-sandy	Medium	Brown	90	Granitoid	Coniferous, buck brush -- thin		
V412216	550781	6780298	2019-05-24	South	Mid slope	Well	30	B	Colluvium	Silty-sandy	Medium	Dark brow	80	Granitoid	Coniferous, buck brush -- thin		
V412217	550629	6780290	2019-05-24	Southwest	Mid slope	Moderate	20	B	Colluvium	Silty-sandy	Medium	Brown	90	Granitoid	Coniferous, buck brush		
V412218	550480	6780282	2019-05-24	Southwest	Mid slope	Moderate	30	B	Colluvium	Silty-sandy	Medium	Dark brow	50	Granitoid	Alpine, minor buck brush		
V412219	550329	6780276	2019-05-24	West	Mid slope	Well	30	B	Colluvium	Silty-sandy	Medium	Dark brow	60	Granitoid	Alpine		
V412220	550254	6780261	2019-05-24	West	Mid slope	Well	30	B	Colluvium	Silty-sandy	Medium	Dark brow	50	Granitoid	Buck brush, coniferous		
V412221	550184	6780268	2019-05-24	West	Mid slope	Moderate	25	B	Colluvium	Silty-sandy	Medium	Dark brow	50	Granitoid	Coniferous, buck brush	Very few clasts	
V412222	550095	6780266	2019-05-24	West	Mid slope	Moderate	50	B	Colluvium	Silty-sandy	Medium	Dark brow	50	Granitoid	Coniferous		
V412223	550095	6780266	2019-05-24	West	Mid slope	Moderate	50	B	Colluvium	Silty-sandy	Medium	Dark brow	50	Granitoid	Coniferous	Duplicate of V412222	
V412224	550030	6780257	2019-05-24	West	Mid slope	Moderate	15	B	Colluvium	Silty-sandy	Medium	Dark brow	50	Granitoid	Coniferous	Very few clasts	
V412225	549959	6780263	2019-05-24	East	Mid slope	Well	50	B	Colluvium	Silty-sandy	Medium	Light brow	0	Granitoid	Coniferous, buck brush	Very few clasts	
V412226	549865	6780244	2019-05-24	East	Mid slope	Well	10	B	Colluvium/talus	Silty-sandy	Medium	Dark brow	100	Granitoid	Buck brush, coniferous	Coarse gravel present. Moved sample S of talus slope. Very coarse grained w/ many large angular clasts but decent silt-clay content.	
V412227	549804	6780256	2019-05-24	East	Mid slope	Well	50	B	Colluvium/talus	Silty-sandy	Medium	Light brow	90	Granitoid	Buck brush, coniferous	Site near outcrop and talus slope. Some coarse grained angular clasts in sample.	
V412228	549733	6780104	2019-05-24	Southwest	Mid slope	Well	30	B	Colluvium	Silty-sandy	Medium	Dark brow	100	Granitoid	Buck brush, coniferous		
V412229	549658	6780097	2019-05-24	Southwest	Mid slope	Well	20	B	Colluvium	Silty-sandy	Medium	Brown	40	Granitoid	Buck brush, coniferous		
V412230	549585	6780097	2019-05-24	Southeast	Mid slope	Well	30	B	Colluvium	Silty-sandy	Medium	Dark brow	0	Granitoid	Buck brush, coniferous	Very few clasts	
V412231	549509	6780085	2019-05-24	Southwest	Mid slope	Moderate	30	B	Colluvium	Silty-sandy	Medium	Dark brow	50	Granitoid	Buck brush, coniferous		
V412232	549439	6780089	2019-05-24	Southwest	Mid slope	Well	20	B	Colluvium	Silty-sandy	Medium	Orange-br	60	Granitoid	Buck brush, coniferous		
V412233	549365	6780078	2019-05-24	Southwest	Mid slope	Well	25	B	Colluvium	Silty-sandy	Medium	Light brow	50	Granitoid	Buck brush, coniferous		
V412234	549287	6780074	2019-05-24	Southwest	Mid slope	Well	25	B	Colluvium	Silty-sandy	Medium	Dark brow	50	Granitoid	Buckbrush		
V412235	549134	6780066	2019-05-24	Southwest	Mid slope	Moderate	15	B	Colluvium	Silty-sandy	Medium	Dark brow	50	Granitoid	Coniferous		
V412236	548987	6780070	2019-05-24	Southwest	Mid slope	Well	25	B	Colluvium	Silty-sandy	Medium	Dark brown/orange br	Granitoid	Coniferous			
V412237	548836	6780063	2019-05-24	West	Mid slope	Well	30	B	Colluvium	Silty-sandy	Medium	Orange-br	50	Granitoid	Coniferous		
V412238	548813	6780504	2019-05-24	West	Mid slope	Moderate	25	B	Colluvium	Silty-sandy	Medium	Light brow	50	Granitoid	Coniferous		
V412239	548989	6780512	2019-05-24	West	Mid slope	Moderate	25	B	Colluvium	Silty-sandy	Medium	Dark brow	70	Granitoid	Buck brush		
V412240	549112	6780521	2019-05-24	West	Mid slope	Moderate	30	B	Colluvium	Silty-sandy	Medium	Dark brow	60	Granitoid	Buck brush, coniferous		
V412241	549284	6780531	2019-05-24	West	Mid slope	Poor	30	B	Colluvium	Silty-sandy	High	Light brow	80	Granitoid	Very wet soil		
V412242	549343	6780539	2019-05-24	West	Mid slope	Poor	35	B	Colluvium	Silty-sandy	High	Light brow	90	Granitoid	Buck brush	Sampled frost boil	
V412243	549414	6780538	2019-05-24	West	Mid slope	Moderate	30	B	Colluvium	Silty-sandy	Medium	Light brow	80	Granitoid	Minor buck brush		
V412244	549492	6780544	2019-05-24	West	Bench	Poor	25	B	Till	Silty-sandy	High	Orange-br	50	Granitoid	Buck brush		
V412245	549582	6780543	2019-05-24	West	Bench	Poor	30	B	Colluvium	Silty-sandy	High	Light brow	70	Granitoid	Buck brush		
V412246	549641	6780544	2019-05-24	West	Mid slope	Moderate	20	B	Colluvium	Silty-sandy	Medium	Dark brow	60	Granitoid	Buck brush		
V412247	549721	6780565	2019-05-24	West	Mid slope	Poor	5	B	Colluvium	Silty	High	Dark brown			Alpine	No visible clasts. Moved sample due to large snow pile. Ground was frozen. Sample scraped from partially frozen frost boil.	
V412248	549363	6781556	2019-05-27	West	Mid slope	Moderate	5	B	Colluvium	Silty-sandy	Medium	Dark brow	90	Granitoid	Alpine	Moved sampe due to large snow mound/talus slope	
V412249	549237	6781580	2019-05-27	West	Mid slope	Moderate	15	B	Colluvium	Silty-sandy	Medium	Light brow	90	Granitoid	Alpine		
V412250	549088	6781578	2019-05-27	West	Mid slope	Poor	10	B	Colluvium	Silty-sandy	Medium	Light brow	80	Granitoid	Alpine		
V412251	549793	6780556	2019-05-24	East	Ridge shou	Good	15	B	Till	Silty-sandy	Medium	Dark brow	10	Granitoid	Alpine		
V412252	549813	6780098	2019-05-24	East	Mid slope	Moderate	20	B	Colluvium	Silty-sandy	Medium	Brown	90	Granitoid	Alpine, buck brush		
V412253	549885	6780105	2019-05-24	East	Mid slope	Good	20	B	Colluvium	Silty-sandy	Medium	Brown-gre	100	Granitoid	Alpine, buck brush		
V412254	549952	6780112	2019-05-24	East	Lower slog	Good	40	B	Colluvium	Silty-sandy	Medium	Brown-ligh	100	Granitoid	Buck brush, coniferous		
V412255	550029	6780114	2019-05-24	West	Slope bott	Moderate	15	B	Colluvium	Silty-sandy	Medium	Light brow	100	Granitoid	Buck brush, coniferous		
V412256	550106	6780117	2019-05-24	West	Mid slope	Good	20	B	Colluvium	Silty-sandy	Medium	Light tan	90	Granitoid	Buck brush, coniferous		
V412257	550183	6780114	2019-05-24	West	Mid slope	Good	15	B	Colluvium	Silty-sandy	Medium		100	Granitoid	Buck brush, coniferous		
V412258	550256	6780123	2019-05-24	West	Mid slope	Good	40	B	Colluvium	Silty-sandy	Medium	Brown-red	100	Granitoid	Buck brush, coniferous		
V412259	550339	6780143	2019-05-24	West	Mid slope	Good	40	B	Colluvium	Silty-sandy	Medium		100	Granitoid	Buck brush, coniferous		
V412260	550501	6780124	2019-05-24	West	Mid slope	Good	35	B	Colluvium	Silty-sandy	Medium		100	Granitoid	Buck brush, coniferous		
V412261	550628	6780137	2019-05-24	North	Shallow hil	Good	20	B	Colluvium/till	Silty-sandy	Medium	Brown-red	100		Buck brush, coniferous	Very few clasts	
V412262	550779	6780140	2019-05-24	South	Mid slope	Good	30	B	Colluvium	Silty-sandy	Medium	Brown	90	Granitoid	Buck brush		
V412263	550939	6780167	2019-05-24	South	Mid slope	Good	35	B	Till/colluvium	Silty-sandy	Light	Brown	5	Granitoid	Buck brush, coniferous		
V412264	551078	6780179	2019-05-24	South	Mid slope	Good	45	B	Colluvium/till	Silty-sandy	Medium	Brown	85	Granitoid	Buck brush, coniferous		
V412265	551084	6780611	2019-05-24	West	Mid slope	Moderate	25	B	Till/colluvium	Silty-clay	High	Dark brow	60	Granitoid	Alpine		
V412266	550916	6780595	2019-05-24	West	Mid slope	Moderate	25	B	Clay	Silty	High	Light brow			Alpine	No visible clasts.	
V412267	550771	6780588	2019-05-24	West	Shallow hil	Moderate	30	B	Till/colluvium	Silty-sandy	Medium	Light brow	70		Alpine		
V412268	550617	6780589	2019-05-24	West	Shallow hil	Moderate	30	B	Till/colluvium	Silty-sandy	Medium	Brown	30	Granitoid	Alpine		
V412269	550485	6780590	2019-05-24	West	Mid slope	Moderate	25	B	Colluvium/till	Sandy	Medium	Light brow	90		Alpine		
V412270	550316	6780574	2019-05-26T00:48:09Z	Level plain	Moderate	20	B	Till/colluvium	Silty-sandy	Medium	Brown	60		Alpine			
V412271	550247	6780575	2019-05-24	West	Mid slope	Good	15	B	Colluvium	Silty-sandy	Medium	Brown	70		Alpine		
V412272	550164	6780571	2019-05-24	West	Mid slope	Good	90	B	Colluvium	Silty	Medium	Brown	60		Alpine		
V412273	550075	6780568	2019-05-24	East	Mid slope	Good	30	B	Colluvium	Silty-sandy	Medium	Grey-brow	30	Granitoid	Alpine, buck brush		
V412274	550022	6780561	2019-05-24	Southeast	Mid slope	Good	40	B	Colluvium	Silty	Medium	Dark grey-	90				
V412275	549937	6780572	2019-05-24	East	Mid slope	Good	45	B	Colluvium	Silty-sandy	Medium		90				
V412276	549872	6780560	2019-05-24	East	Mid slope	Good	35	B	Colluvium	Silty	Medium	Brown-gre	60				
V412277	549743	6779801	2019-05-24	West	Mid slope	Good	55	B	Colluvium	Silty-sandy	Medium	Brown	80		Coniferous, buck brush		
V412278	549664	6779790	2019-05-24	West	Mid slope	Moderate	30	B	Colluvium	Silty-sandy	Medium	Brown	20	Granitoid	Coniferous, buck brush		
V412279	549590	6779796	2019-05-24	West	Mid slope	Moderate	35	B	Colluvium	Silty-sandy	Medium	Brown	80		Coniferous, buck brush		
V412280	549523	6779789	2019-05-24	Southwest	Mid slope	Good	35	B	Colluvium/till	Sandy	Medium	Brown-ora	100		Coniferous, buck brush		
V412281	549447	6779786	2019-05-24	Southeast	Mid slope	Good	35	B	Colluvium/till	Silty-sandy	Medium	Brown	70		Coniferous, buck brush		
V412282	549369	6779783	2019-05-24	South	Mid slope	Good	30	B	Colluvium/till	Silty	Medium	Light brow	20	Granitoid	Coniferous, buck brush		
V412283	549291	6779776	2019-05-24	West	Mid slope	Good	30	B	Colluvium	Clay	Medium	Grey-orang	100		Coniferous, buck brush		
V412284	549145	6779767	2019-05-24	Southwest	Shallow slo	Good	40	B, C	Colluvium/till	Clay	Medium	Grey	100	Rusty chlo	Coniferous, grassy	Rusty rock flakes	
V412																	

V412287	548831	6780206	2019-05-26	West	Mid slope	Good	30	B	Till/colluvium	Silty-sandy	Medium	Light brow	100	Granitoid	Coniferous	
V412288	548988	6780219	2019-05-26	West	Mid slope	Good	30	B	Till/colluvium	Silty-sandy	Medium	Med-dark	20	Granitoid	Coniferous	
V412289	549128	6780225	2019-05-26	West	Mid slope	Good	40	B	Till/colluvium	Silty-sandy	Medium	Brown	30	Schist	Coniferous, buck brush	
V412290	549275	6780230	2019-05-26	21:21:58Z	Bench	Moderate	35	B, C	Till/colluvium	Silty	Medium		30	Rusty shist	Buck brush, coniferous	Rusty rock flakes
V412291	549348	6780232	2019-05-26	21:38:00Z	Bench	Moderate	40	B	Till/colluvium	Silty	Medium		20	Granitoid	Buck brush, coniferous	
V412292	549422	6780245	2019-05-26	Southwest	Shallow m	Good	40	B	Till	Silty-sandy	High	Med-dark	0	Granitoid	Buck brush, coniferous	
V412293	549420	6780244	2019-05-26	Southwest	Shallow m	Good	40	B	Till	Silty-sandy	High	Med-dark	0	Granitoid	Buck brush, coniferous	Duplicate of V412292
V412294	549504	6780248	2019-05-26	21:22:05:17Z	Bench	Moderate	30	B	Till	Silty-sandy	Medium	Brown	0	Granitoid	Buck brush	
V412295	549580	6780245	2019-05-26	Southwest	Bench	Moderate	35	B	Till	Sandy	Medium	Brown	0	Granitoid		
V412296	549645	6780243	2019-05-26	Southwest	Mid slope	Good	35	B	Till	Silty	Medium	Brown	0	Granitoid	Buck brush, coniferous	
V412297	549739	6780249	2019-05-26	Southwest	Top of spu	Good	30	B	Till	Silty-sandy	Medium	Brown	10	Granitoid	Buck brush, coniferous	
V412298	549365	6781440	2019-05-27	Southwest	Top of slop	Good	35	B	Colluvium/till	Silty-sandy	Medium	Light brow	90		Alpine	Sampled frost boil
V412299	549223	6781429	2019-05-27	West	Mid slope	Good	30	B	Colluvium	Silty-sandy	Medium	Brown-gre	80		Alpine	Possible old frost boil
V412300	549080	6781426	2019-05-27	West	Mid slope	Good	25	B	Colluvium	Silty-sandy	Medium-h	Light brow	90		Alpine	
V412301	549812	6779958	2019-05-25	South	Shoulder	Good	20	B	Till	Silty	Medium	Brown	15	Granitoid	Alpine	
V412302	549890	6779960	2019-05-25	East	Mid slope	Good	30	B	Till	Silty-sandy	Medium	Brown	80	Sandstone	Buckbrush	
V412303	549960	6779963	2019-05-25	East	Mid slope	Good	35	B	Till	Silty-sandy	Low	Grey-white	60	Granitoid	Buck brush, Coniferous	Very steep slope. Few larger clasts.
V412304	550038	6779969	2019-05-25	East	Mid slope	Moderate	35	B	Till	Silty-sandy	Medium	Brown/Gre	15	Granitoid	Buck brush, Coniferous	Very steep slope. Few small clasts.
V412305	550118	6779960	2019-05-25	East	Mid slope	Good	40	B	Till	Sandy	Medium	Brown	15	Granitoid	Buck brush, Coniferous	Very steep slope. Few large/small clasts.
V412306	550197	6779973	2019-05-25	West	Mid slope	Good	15	B	Till	Clay-silt	High	Brown-blai	20	Granitoid	Buck brush, Coniferous	Very steep slope. Very few very small clasts.
V412307	550259	6779971	2019-05-25	West	Mid slope	Good	15	B	Colluvium	Clay-silt	High	Brown-black			Buck brush, Coniferous	No clasts
V412308	550335	6779981	2019-05-25	Southwest	Mid slope	Good	20	B	Colluvium	Clay-silt	High	Brown-blai	25	Sandstone	Buck brush, Coniferous	Almost no clasts
V412309	550486	6779977	2019-05-25	South	Mid slope	Good	20	B	Colluvium	Clay-silt	Medium	Brown-grey			Coniferous	No clasts
V412310	550635	6779987	2019-05-25	South	Mid slope	Good	20	B	Colluvium	Silt-sand	Medium	Brown	0	Sandstone	Buck brush	Very few very small clasts
V412311	550786	6779993	2019-05-25	South	Mid slope	Good	20	B	Till	Silt-sand	Medium	Brown	25	Sandstone	Buck bruj	Few clasts, mostly tiny. A couple large ones.
V412312	550936	6780005	2019-05-25	South	Mid slope	Good	25	B	Till	Sandy	Medium	Brown-gre	25	Granitoid	Buck brush, coniferous	Few large clasts
V412313	551084	6780009		South	Mid slope	Good	25	B	Till	Sandy	Low-medi	Brown	90	Granitoid	Buck brush, coniferous	Angular hematized clasts similar to rock found on surface. Good photo of O-A-B.
V412314	551073	6780457	2019-05-25	South	Mid slope	Moderate	25	B	Till	Silty-sandy	Medium	Brown	40	Granitoid	Buck brush	Moderate amount of large clasts
V412315	550925	6780451	2019-05-25	South	Shoulder	Poor	25	B	Till	Silty-sandy	Medium	Brown-blai	65	Granitoid	Alpine	Moderate amount of moderate sized clasts.
V412316	550783	6780444		Southwest	Spur-top	Poor	20	B	Till	Sandy	Low	Brown	65	Granitoid	Alpine	Sampled frost boil. Many various sized clasts.
V412317	550628	6780441	2019-05-25	Southwest	Spur-top	Moderate	15	B	Colluvium	Silty	Medium	Brown			Buck brush	No observed clasts
V412318	550478	6780423	2019-05-25	East	Shoulder	Moderate	20	B	Till	Silty-sandy	Medium	Brown	0	Granitoid	Alpine	Boulder field. Moderate clasts of moderate size.
V412319	550321	6780425	2019-05-25	Northeast	Spur-top	Poor	15	B	Till	Silty-sandy	Low	Brown	10	Granitoid	Alpine	West of boulder field. Moderate clasts of moderate size.
V412320	550257	6780422	2019-05-25	East	Shoukder	Moderate	20	B	Till	Silty-sandy	Low-medi	Brown	70	Granitoid	Buck brush	Lots of small to large clasts.
V412321	550173	6780414	2019-05-25	West	Mid slope	Moderate	25	B	Colluvium	Silty	High	Dark brown			Alpine, coniferous	No observed clasts
V412322	550107	6780406	2019-05-25	West	Mid slope	Moderate	15	B	Till	Silty-sandy	Medium	Brown	70	Granitoid	Alpine, coniferous	A few small clasts.
V412323	550040	6780411	2019-05-25	East	Near river	Good	20	B	Till	Silty-sandy	Medium	Brown	70	Granitoid	Coniferous, grassy	A few small + large clasts
V412324	549952	6780403	2019-05-25	East	Mid slope	Good	35	B	Till	Sandy	Low	Brown-gre	60	Granitoid	Coniferous	Near rockslide. Moderate medium + large clasts
V412325	549883	6780418	2019-05-25	East	Mid slope	Good	35	B	Till	Sandy	Low	Brown	60	Granitoid	Buck brush	Very steep. Moderate amounts of small-moderate clasts.
V412326	549805	6780407	2019-05-25	East	Mid slope	Good	40	B	Till	Silty-sandy	Medium	Brown	75	Sandstone	Buck brush, coniferous	Moderate amount of small clasts
V412327	549743	6779948	2019-05-25	West	Shoulder	Good	25	B	Till	Silty-sandy	Medium	Brown	70	Sandstone	Buck brush	Small amounts of small clasts
V412328	549664	6779947	2019-05-25	West	Mid slope	Moderate	25	B	Till	Silty	High	Dark brow	60	Granitoid	Buck brush, coniferous	Few, very small clasts
V412329	549590	6779945	2019-05-25	West	Mid slope	Moderate	15	B	Till	Silty-sandy	Medium	Brown	70	Granitoid	Buck brush, coniferous	Few, very small clasts
V412330	549512	6779938	2019-05-25	Southwest	Mid slope	Moderate	15	B	Till	Silty-sandy	Medium	Brown	70	Quartz, gra	Buck brush	Few, very small clasts
V412331	549436	6779939	2019-05-25	South	Shoulder	Poor	30	B	Till	Silty-sandy	Medium	Brown	65	Sandstone	Buck brush	Moderate amount of small to medium clasts
V412332	549363	6779932	2019-05-25	Southwest	Mid slope	Moderate	20	B	Till	Silty-sandy	Medium-h	Brown	40	Granitoid	Buck brush	Few, small to medium clasts
V412333	549291	6779931	2019-05-25	Southwest	Mid slope	Moderate	25	B	Till	Silty-sandy	Medium	Brown	50	Granitoid	Buck brush	Moderate amount of small-medium clasts
V412334	549138	6779922	2019-05-25	Southwest	Mid slope	Moderate	25	B	Till	Silty-sandy	Medium-h	Brown	60	Granitoid	Coniferous, buck brush	Moderate small-medium clasts
V412335	548990	6779918	2019-05-25	West	Mid slope	Moderate	15	B	Till	Silty	High	Brown-blai	25	Sandstone	Grassy	Game trail. Few very small to small clasts
V412336	548840	6779912	2019-05-25	Southwest	Mid slope	Good	30	B	Till	Sandy	Low	Brown	60	Granitoid	Buck brush	A horizon observed above (black-grey, clay). Few small-medium clasts
V412337	548824	6780361	2019-05-25	Southwest	Mid slope	Good	25	B	Till	Sandy	Low	Brown	70	Granitoid	Coniferous	Moderate amount of medium clasts
V412338	548974	6780366	2019-05-25	West	Mid slope	Good	15	B	Till	Silty-sandy	Low-medi	Black-brow	60	Granitoid	Alpine, grassy	Moderate amount of small to medium clasts
V412339	549123	6780373	2019-05-25	West	Mid slope	Good	20	B	Till	Sandy	Low-medi	Brown	60	Granitoid	Alpine, grassy	Moderate amount of small to medium clasts
V412340	549272	6780380	2019-05-25	West	Shoulder	Poor	20	B	Till	Sandy	Low-medi	Brown	65	Granitoid	Buck brush	High amount of medium-large clasts
V412341	549350	6780382	2019-05-25	West	Shoulder	Poor	30	B	Till	silty-sandy	Medium	Brown	65	Granitoid	Buck brush	Moderate amount of small-medium clasts
V412342	549426	6780385	2019-05-25	West	Spur-top	Moderate	40	B	Till	Sandy	Low	Brown	65	Granitoid	Buck brush	Many medium large clasts
V412343	549500	6780389	2019-05-25	West	Spur-top	Moderate	25	B	Till	Silty	Medium-h	Brown	85	Granitoid	Buck brush	Moderate amounts of medium-large clasts
V412344	549573	6780393	2019-05-25	West	Spur-top	Poor	25	B	Till	Silty	Medium-h	Black-brow	85	Granitoid	Buck brush	Moderate amounts of small clasts
V412345	549649	6780396	2019-05-25	West	High slope	Poor	25	B	Till	Silty-sandy	Medium	Brown	55	Granitoid	Alpine, grassy	Moderate amounts of small-medium clasts
V412346	549723	6780399	2019-05-25	West	Shoulder	Poor	20	B	Till	Silty-sandy	Medium	Brown	60	Granitoid	Alpine, grassy	Moderate amounts of small clasts
V412347	549372	6781285	2019-05-27	South	Mid slope	Good	35	B	Till	Silty-sandy	Medium	Brown	65	Granitoid	Alpine	Moderate amounts of small-medium clasts
V412348	549241	6781279	2019-05-27	Southwest	Mid slope	Good	30	B	Till	Silty-sandy	Medium	Brown	50	Granitoid	Alpine	Moderate amounts of small-medium clasts
V412349	549100	6781270	2019-05-27	West	Mid slope	Poor	20	B	Till	Silty-sandy	Medium	Brown	85	Granitoid	Alpine	Few small to medium clasts
V412350	548938	6781269	2019-05-27	West	Mid slope	Moderate	35	B	Till	Silty-sandy	Medium	Brown	55	Quartz, gra	Alpine, grassy	Lots of medium-large clasts. Missed photo.
V412351	548519	6780636	2019-05-26	East	Lower slop	Good	35	B	Till	Silty-sandy	Medium	Brown-ora	10	Granitoid	Coniferous	
V412352	548941	6781422	2019-05-27	West	Shallow lo	Good	30	B	Till/colluvium	Silty	Low	Light brow	10	Granitoid	Buck brush, coniferous	
V412353	548789	6781405	2019-05-27	18:54:11Z	Base of gra	Poor	35	B	Till	Silty	Medium	Light grey	0	Granitoid	Buck brush	
V412354	548642	6781393	2019-05-27	South	Bottom of	Good	35	B	Till/colluvium	Clay-silt	Medium	Brown	10	Granitoid	Coniferous	
V412355	548490	6781397	2019-05-27	South	Mid slope	Good	40	B	Till/colluvium	Silty	Medium	Light brow	10	Granitoid	Buck brush, coniferous	
V412356	548337	6781381	2019-05-27	South	Mid slope	Good	40	B	Colluvium/till	Silty	Medium	Light brow	60		Buck brush, coniferous	
V412357	548180	6781385	2019-05-27	Southwest	Mid slope	Good	35	B	Colluvium/till	Silty	Medium	Brown	70	Chloritic sc	Buck brush, coniferous	
V412358	548040	6781380	2019-05-27	West	Mid slope	Good	40	B	Till/colluvium	Clay-silt	Medium	Brown	30	Schistose f	Alpine	
V412359	547889	6781371	2019-05-27	West		Moderate	40	B	Colluvium/till	Silty	Medium	Brown-gre	50	Schistose f	Buck brush	
V412360	548505	6780955	2019-05-27	West		Good	35	B	Till	Clay-silt	Medium	Brown-gre	0	Granitoid	Coniferous/buck brush	
V412361	548651	6780955	2019-05-27	West	Mid slope	Good	40	B	Till	Silty-sandy	Low-medi	Brown-ora	0	Granitoid	Coniferous/buck brush	
V412362	548802	6780955	2019-05-27	West	Mid slope	Good	35	B	Colluvium/till	Clay-silt-sand	Medium	Brown	90		Buck brush, coniferous	
V412363	548944	6780967	2019-05-27	Southwest	Mid slope	Good	35	B	Colluvium/till	Silty-sandy	Medium	Brown	70		Buck brush, coniferous	
V412364	549096	6780977	2019-05-27	Southwest	Mid slope	Good	30	B	Colluvium/till	Silty-sandy	Medium	Brown	70		Alpine, coniferous	
V412365	549249	6780982	2019-05-27	South	Mid slope	Good	40	B	Till/colluvium	Silty-sandy	Medium	Brown	50	Granitoid	Alpine, buck brush	
V412366	549405	6780994	2019-05-27	Southeast	Mid slope	Good	45	B	Colluvium	Silty	Medium	Brown	100			
V412367	549547	6780992	2019-05-27	Southwest	Mid slope	Good	30	B	Till/colluvium	Silty-sandy	Medium	Brown	40	Granitoid	Alpine, coniferous, desiduous	
V412368	549695	6780992	2019-05-27	Southwest	Mid slope	Good	25	B	Till/colluvium	Silty	Medium	Brown	90		Alpine	Sampled frost boil
V412369	549502	6781445	2019-05-28	Southeast	Mid slope	Good	40	B	Till/colluvium	Silty-sandy	Medium	Orange-bri	30	Granitoid	Alpine	Sampled frost boil
V412370	549653	6781450	2019-05-28	South	Mid slope	Good	25	B	Till/colluvium	Sandy	Low	Brown	30	Granitoid	Alpine	
V412371	549795	6781454	2019-05-28	South	Mid slope	Good	30	B	Colluvium/till	Silty	Low	Brown-gre	90		Alpine	
V412372																

V412374	550250	6781484	2019-05-28	East	Bottom of	Good	30	B	Colluvium	Sandy	Medium	Brown	90		Alpine	
V412375	551051	6781060	2019-05-28	Northwest	Lower slope	Poor	25	B	Till	Clay	Medium	Brown			Alpine	No clasts present
V412376	550900	6781053	2019-05-28	North	Mid slope	Poor	35	B	Till	Sandy	Medium	Brown	100		Alpine	On glacial side of terminal moraine from up-valley cirque
V412377	550746	6781044	2019-05-28	North	Mid slope	Good	30	B	Till	Clay-silt-sand	High	Grey-brown			Alpine	No clasts present. On down-valley side of terminal moraine.
V412378	550583	6781064	2019-05-28	South	Lower slope	Moderate	35	B	Till	Sandy	Medium	Brown	40		Buck brush, coniferous	Moraine gravel
V412379	550459	6781023	2019-05-28	Southeast	Mid slope	Good	60	B	Till	Silty-sandy	Medium	Brown	10	Granitoid	Alpine, buck brush	
V412380	550306	6781026	2019-05-28	East	Lower slope	Good	35	B	Till	Sandy	Medium	Brown	50	Granitoid	Alpine, buck brush, coniferous	
V412381	550151	6781016	2019-05-28	South	Mid slope	Good	30	B	Till	Silty-sandy	Medium	Brown	90		Alpine, buck brush	
V412382	550006	6781008	2019-05-28	Southeast	Bench	Good	40	B	Till	Silty-sandy	Medium	Grey-brown	0	Granitoid	Alpine, buck brush	
V412383	549852	6780998	2019-05-28	South	Bench	Good	30	B	Till/colluvium	Silty-sandy	Medium	Brown	90		Alpine, buck brush	
V412384	548657	6780659	2019-05-28	South	Shallow slope	Moderate	60	B	Till	Sandy	Medium	Grey	90		Coniferous	Gravelly
V412385	548821	6780680	2019-05-28	West	Shallow slope	Moderate	35	B	Till	Sandy	Medium	Brown-grey	90		Coniferous	Barely any clasts
V412386	548974	6780672	2019-05-28	West	Shallow slope	Moderate	35	B	Till	Silty-sandy	Medium	Light brown	90		Coniferous, buck brush	Small 3x3mm clasts
V412387	549098	6780680	2019-05-30	Northwest	Lower slope	Good	35	B	Till	Clay-silt	Medium	Light brown	100	Schistose	Coniferous, buck brush	
V412388	549258	6780681	2019-05-30	Northwest	Mid slope	Good	15	B	Till	Sandy	Medium	Light brown	100	Schistose	Coniferous, buck brush	Gravelly. Gossanous schistose flakes.
V412389	549345	6780675	2019-05-30	Northwest	Mid slope	Moderate	25	B	Till	Clay-silt	Medium	Light brown	90	Chlorite sc	Buck brush	Small gravelly clasts. Some chloritic flakes.
V412390	549408	6780691	2019-05-30	Northwest	Mid slope	Moderate	25	B	Till	Clay-silt	High	Light brown	80		Buck brush	Wet
V412391	549486	6780687	2019-05-30	West	Mid slope	Moderate	40	B	Till	Silty-sandy	High	Light brown	90		Buck brush	
V412392	549562	6780693	2019-05-30	West	Shallow slope	Moderate	45	B/C	Till	Silty-sandy	High	Light brown	100	Gossanous	Buck brush	5% orange gossanous flakes
V412401	548947	6781592	2019-05-27	West	Mid slope	Moderate	20	B	Colluvium/till	Silty-sandy	Medium	Light brown	70	Granitoid	Minor coniferous	
V412402	548791	6781560	2019-05-27	West	Mid slope	Well	25	B	Colluvium/till	Silty-sandy	Medium	Dark brown	50	Granitoid	Minor coniferous/buck brush	
V412403	548640	6781550	2019-05-27	East	River-valley	Well	30	B	Till	Silty-sandy	Medium	Dark brown	20	Granitoid	Buck brush, coniferous	
V412404	548489	6781548	2019-05-27	Southeast	Mid slope	Well	30	B	Colluvium	Silty-sandy	Medium	Dark brown	90	Granitoid	Buck brush, coniferous	
V412405	548328	6781535	2019-05-27	Southeast	Mid slope	Well	30	B	Colluvium	Silty-sandy	Medium	Dark brown	90	Granitoid	Buck brush, minor coniferous	
V412406	548174	6781530	2019-05-27	Southeast	Mid slope	Well	25	B	Colluvium	Silty-sandy	Medium	Dark brown	70	Granitoid	Buck brush	
V412407	548037	6781527	2019-05-27	Southeast	Mid slope	Well	35	B	Colluvium	Silty-sandy	Medium	Dark orange	80	Granitoid	Buck brush, minor coniferous	
V412408	547887	6781523	2019-05-27	Southeast	Mid slope	Well	30	B	Colluvium	Silty-sandy	Medium	Light brown	70	Granitoid	Grassy, minor buckbrush/coniferous	
V412409	548497	6781098	2019-05-27	Southeast	Mid slope	Well	35	B	Colluvium	Silty-sandy	Medium	Light brown	90	Granitoid	Buck brush	
V412410	548633	6781104	2019-05-27	West	Mid slope	Well	25	B	Colluvium	Silty-sandy	Medium	Dark	50	Granitoid	Buck brush, coniferous	
V412411	548793	6781108	2019-05-27	West	Mid slope	Well	20	B	Colluvium	Silty-sandy	Medium	Dark brown	80	Granitoid	Buck brush, minor coniferous	
V412412	548939	6781114	2019-05-27	West	Mid slope	Moderate	20	B	Colluvium	Silty-sandy	Medium	Dark brown	80	Granitoid	Buck brush, minor coniferous	
V412413	549095	6781127	2019-05-27	West	Mid slope	Moderate	25	B	Colluvium	Silty-sandy	Medium	Dark brown	90	Granitoid	Alpine	
V412414	549240	6781130	2019-05-27	Southeast	Mid slope	Well	30	B	Colluvium/till	Silty-sandy	Medium	Dark brown	70	Granitoid	Alpine	
V412415	549372	6781140	2019-05-27	Southeast	Mid slope	Moderate	35	B	Colluvium/till	Silty-sandy	Medium	Dark brown	20	Granitoid	Alpine	
V412416	549490	6781583	2019-05-28	16.51-51.2	Ridge top	Moderate	25	B	Till	Silty-sandy	Medium	Light brown	60	Granitoid	Alpine	Sampled frost boil
V412417	549646	6781597	2019-05-28	South	Ridge top	Well	25	B	Till	Silty-sandy	Medium	Dark brown	80	Granitoid	Alpine	
V412418	549786	6781607	2019-05-28	South	Mid slope	Moderate	35	B/C	Till/colluvium	Silty-sandy	Medium	Grey/orange	100	Granitoid	Alpine	
V412419	549939	6781613	2019-05-28	South	Mid slope	Moderate	35	B	Till/colluvium	Silty-sandy	Medium	Orange brown	100	Granitoid	Alpine	Sampled frost boil
V412420	550093	6781617	2019-05-28	East	Mid slope	Moderate	30	B	Colluvium	Silty-sandy	Medium	Orange brown	80	Granitoid	Alpine	Sampled frost boil
V412421	550244	6781619	2019-05-28	West	Valley	Moderate	25	B	Colluvium/till	Silty-sandy	Medium	Light brown	60	Granitoid	Grassy	
V412422	551021	6781248	2019-05-28	Southwest	Valley	Well	35	B	Colluvium/till	Silty-sandy	Medium	Brown	50	Granitoid	Grassy	Moved sample uphill from river
V412423	550898	6781203	2019-05-28	South	Valley	Well	35	B	Colluvium/till	Sandy	Medium	Light brown	50	Granitoid	Minor buck brush	Very few clasts
V412424	550750	6781186	2019-05-28	West	Moraine	Well	30	B	Till	Silty-sandy	Medium	Orange brown	30	Granitoid	Alpine	
V412425	550600	6781188	2019-05-28	South	Mid slope	Moderate	30	B	Colluvium/till	Silty-sandy	Medium	Dark brown	50	Granitoid	Minor coniferous	
V412426	550446	6781173	2019-05-28	Southwest	Mid slope	Moderate	30	B	Colluvium	Silty-sandy	Medium	Dark brown	80	Granitoid	Minor buck brush	
V412427	550280	6781181	2019-05-28	East	Mid slope	Moderate	30	B	Colluvium	Silty-sandy	Medium	Dark brown	80	Granitoid	Alpine	
V412428	550109	6781162	2019-05-28	Southeast	Mid slope	Well	25	B	Colluvium/till	Silty-sandy	Medium	Red brown	50	Granitoid	Alpine	
V412429	549967	6781160	2019-05-28	Southeast	Mid slope	Moderate	30	B	Till	Silty-sandy	Medium	Grey/brown	50	Granitoid	Alpine	
V412430	549813	6781154	2019-05-28	Southeast	Mid slope	Moderate	40	B	Till	Silty-sandy	Medium	Dark brown	40	Granitoid	Alpine	
V412431	549813	6781154	2019-05-28	Southeast	Mid slope	Moderate	40	B	Till	Silty-sandy	Medium	Dark brown	40	Granitoid	Alpine	Duplicate of V412430
V412432	549661	6781148	2019-05-28	Southwest	Mid slope	Moderate	25	B	Colluvium	Silty-sandy	Medium	Dark brown	100	Granitoid	Alpine, minor coniferous	
V412433	549511	6781143	2019-05-28	Southeast	Mid slope	Moderate	35	B	Colluvium	Silty-sandy	Medium	Dark brown	70	Granitoid	Minor buck brush/coniferous	
V412434	550228	6780718	2019-05-28	South	Mid slope	Well	40	B	Colluvium	Silty-sandy	Medium	Dark brown	60	Granitoid	Buck brush, coniferous	
V412435	550163	6780720	2019-05-28	South	Mid slope	Well	65	B	Colluvium	Silty-sandy	Medium	Dark red-b	80	Granitoid	Buck brush, coniferous	
V412436	550091	6780703	2019-05-28	East	Mid slope	Well	30	B	Colluvium	Sandy	Medium	Dark red-b	70	Granitoid	Buck brush, coniferous	
V412437	550024	6780717	2019-05-28	East	Mid slope	Moderate	35	B	Colluvium	Silty-sandy	Medium	Brown-grey	80	Granitoid	Buck brush, minor	
V412438	549940	6780707	2019-05-30	East	Mid slope	Moderate	30	B	Colluvium	Silty-sandy	Medium	Dark brown	60	Granitoid	Alpine	
V412439	549869	6780705	2019-05-30	East	Mid slope	Moderate	30	B	Colluvium	Silty-sandy	Medium	Orange-brown	90	Granitoid	Alpine	
V412440	549790	6780703	2019-05-30	West	Ridge	Moderate	35	B	Till	Silty-sandy	Medium	Dark brown	30	Granitoid	Alpine	
V412441	549717	6780702	2019-05-30	West	Mid slope	Poor	40	B	Till	Silty-sandy	High	Light brown	40	Granitoid	Alpine	
V412442	549640	6780697	2019-05-30	West	Mid slope	Moderate	30	B	Till	Silty-sandy	Moderate	Dark brown	50	Granitoid	Buck brush, coniferous	
V412451	548792	6781260	2019-05-27	East	Mid slope	Moderate	20	B	Till	Silty-sandy	Medium	Brown	65	Granitoid	Alpine, grassy	Few small to medium clasts
V412452	548640	6781255	2019-05-27	East	Valley bottom	Poor	45	B	Glaciolacustrine	Silty-sandy	Medium	Dark brown			Buck brush	No observed clasts
V412453	548640	6781255	2019-05-27	East	Valley bottom	Poor	45	B	Glaciolacustrine	Silty-sandy	Medium	Dark brown			Buck brush	Duplicate of V412452. No observed clasts
V412454	548494	6781250	2019-05-27	East	Mid slope	Poor	55	B	Glaciolacustrine	Silty-sandy	Medium	Dark brown-grey			Buck brush	Small stream nearby. No clasts. Distinct grey sand w/ oxidized stained pockets.
V412455	548334	6781239	2019-05-27	Southeast	Mid slope	Good	35	B	Till	Silty-sandy	Medium	Brown	65	Granitoid	Alpine, grassy	Few small to medium clasts
V412456	548191	6781240	2019-05-27	South	Mid slope	Good	35	B	Till	Sandy	Medium	Brown	65	Granitoid	Alpine, grassy	Moderate small to medium clasts. Sample taken in weird green vegetated circle, see photo.
V412457	548040	6781238	2019-05-27	South	Mid slope	Good	30	B	Till	Sandy	Medium	Brown	70	Granitoid	Alpine, grassy	Moderate small to medium clasts.
V412458	547892	6781228	2019-05-27	South	Valley bottom	Poor	55	B	Glaciolacustrine	Sandy	Medium-h	Grey-orange			Buck brush	Taken between two small streams. No clasts. Hematized pockets in sandy material.
V412459	548509	6780793	2019-05-27	East	Mid slope	Moderate	20	B	Till	Sandy	Medium	Brown	60	Granitoid	Coniferous	Few very small clasts
V412460	548657	6780802	2019-05-27	South	Mid slope	Good	40	B	Till	Sandy	Low	Brown	60	Granitoid	Alpine, coniferous	Few very small to medium clasts
V412461	548808	6780812	2019-05-27	South	Mid slope	Good	30	B	Till	Sandy	Low-medium	Brown	35	Granitoid	Alpine, coniferous	Moderate small to medium clasts
V412462	548956	6780814	2019-05-27	South	Mid slope	Moderate	25	B	Till	Sandy	Medium	Brown	50	Granitoid	Coniferous	Few small to medium clasts
V412463	549113	6780822	2019-05-27	South	Mid slope	Good	40	B	Till	Sandy	Low	Brown	50	Granitoid	Alpine, coniferous	Few small to medium clasts
V412464	549258	6780829	2019-05-27	East	Mid slope	Moderate	35	B	Till	Sandy	Medium	Brown	60	Granitoid	Alpine	Few very small to small clasts
V412465	549409	6780832	2019-05-27	Southwest	Valley bottom	Moderate	50	B	Glaciolacustrine	Silty-sandy	Medium-h	Brown-black			Buck brush	No observed clasts
V412466	549504	6781292	2019-05-28	South	Mid slope	Poor	40	B	Till	Clay-silt	Medium-h	Light brown	70	Granitoid	Alpine, grassy	Few very small to small clasts
V412467	549644	6781303	2019-05-28	Southwest	Shoulder	Moderate	30	B	Till	Silty-sandy	Medium	Light brown	70	Granitoid	Alpine	Sampled frost boil. Few very small to small clasts.
V412468	549802	6781304	2019-05-28	Southeast	Shoulder	Moderate	30	B	Till	Silty-sandy	Medium-h	Dark brown	60	Quartz, gra	Alpine, plain	Moderate very small to medium clasts
V412469	549953	6781311	2019-05-28	South	Mid slope	Poor	40	B	Till	Silty-sandy	Medium	Dark brown	55	Quartz, gra	Alpine, grassy	Moderate small to medium clasts
V412470	550101	6781315	2019-05-28	Southeast	Shoulder	Poor	55	B	Till	Silty-sandy	Medium	Brown	65	Granitoid	Alpine	Sampled frost boil. Moderate small to medium clasts.
V412471	550248	6781324	2019-05-28	East	Mid slope	Good	35	B	Colluvium	Sandy	Low	Brown	65	Schist	Talus	Many small to large clasts
V412472	551048	6780903	2019-05-28	South	Mid slope	Moderate	30	B	Till	Silty-sandy	Low	Dark brown	65	Granitoid	Alpine, grassy	Many small to medium clasts. Above rock fall.
V412473	550902	6780901	2019-05-28	Northwest	Mid slope	Moderate	20	B	Till	Silty-sandy	Medium	Dark brown	55	Granitoid	Alpine, grassy	Few small to medium clasts
V412474	550758	6780894	2019-05-28	East	Mid slope	Good	30	B	Till	Sandy	Low	Dark brown	65	Granitoid	Alpine, grassy	Many small to large clasts
V412475	550608	6780888</														

V412477	550306	6780876	2019-05-28	Southwest	Mid slope	Moderate	25	B	Till	Silty-sandy	Medium	Dark brow	70	Granitoid	Buck brush	Heavily oxidized/disintegrated: few small to medium.
V412478	550158	6780869	2019-05-28	Southeast	Shoulder	Good	30	B	Till	Sandy	Medium	Brown	65	Granitoid	Buck brush	Many small to very large clasts.
V412479	550007	6780860	2019-05-28	West	Mid slope	Moderate	40	B	Till	Sandy	Medium	Dark brow	60	Granitoid	Alpine, grassy	Moderate small to medium clasts
V412480	549856	6780854	2019-05-28	East	Spur-top	Moderate	35	B	Till	Silty-sandy	Medium	Dark brow	65	Granitoid	Alpine, grassy	Sampled frost boil. Moderate small to medium clasts.
V412481	549708	6780849	2019-05-28	West	Shoulder	Moderate	40	B	Till	Silty-sandy	Medium	Dark brow	70	Granitoid	Alpine, grassy	High small to medium clasts
V412482	549559	6780846	2019-05-28	West	Mid slope	Poor	30	B	Till	Silty-sandy	Medium	Brown	65	Granitoid	Alpine, grassy	Moderate small to medium clasts
V412483	551061	6780759	2019-05-25	West	Shoulder	Good	30	B	Till	Silty-sandy	Medium	Brown	65	Granitoid	Alpine	Moderate small to large clasts
V412484	551061	6780759		West	Shoulder	Good	30	B	Till	Silty-sandy	Medium	Brown	65	Granitoid	Alpine	Duplicate of V412483. Moderate small to large clasts
V412485	550916	6780749	2019-05-30	Northwest	Mid slope	Poor	30	B	Till	Silty-sandy	Medium	Brown	65	Granitoid	Alpine, grassy	Few small to medium clasts
V412486	550762	6780745	2019-05-30	Northwest	Mid slope	Poor	30	B	Till	Silty-sandy	Medium	Brown	65	Granitoid	Alpine	Few large to very large clasts
V412487	550614	6780740	2019-05-30	Northwest	Mid slope	Moderate	30	B	Till	Silty-sandy	Medium	Brown	50	Granitoid	Alpine, talus	Few very small to small clasts
V412488	550463	6780734	2019-05-30	West	Mid slope	Moderate	20	B	Till	Silty-sandy	Medium	Brown	75	Granitoid	Alpine, talus	Few medium to large clasts
V412489	550314	6780726	2019-05-30	Southwest	Valley bott	Good	35	B	Till	Silty-sandy	Medium	Brown	70	Granitoid	Alpine, grassy	Moderate small to large clasts. Above river.