

# STRATEGIC METALS LTD.

FIGURE 3

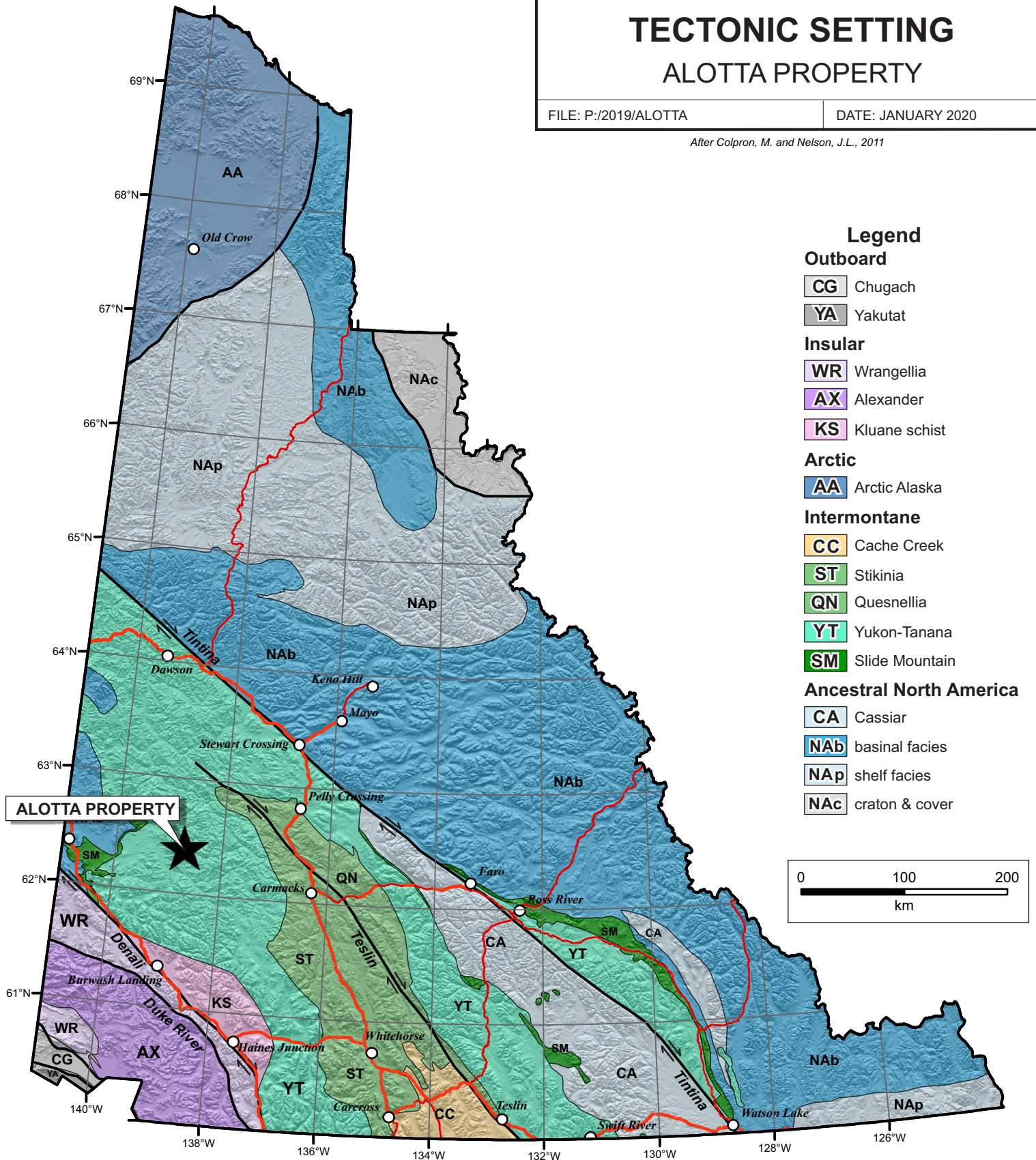
ARCHER, CATHRO & ASSOCIATES (1981) LIMITED

## TECTONIC SETTING ALOTTA PROPERTY

FILE: P:/2019/ALOTTA

DATE: JANUARY 2020

After Colpron, M. and Nelson, J.L., 2011



### Legend

#### Outboard

- CG** Chugach
- YA** Yakutat

#### Insular

- WR** Wrangellia
- AX** Alexander
- KS** Kluane schist

#### Arctic

- AA** Arctic Alaska

#### Intermontane

- CC** Cache Creek
- ST** Stikinia
- QN** Quesnellia
- YT** Yukon-Tanana
- SM** Slide Mountain

#### Ancestral North America

- CA** Cassiar
- NAb** basinal facies
- NAp** shelf facies
- NAc** craton & cover

