

Final Technical Report Calder Creek Exploration Project

YMEP 20-074

Rotary auger drilling exploration program:

Summary, logs and map.

Grant Allan

Feb 4, 2021.

Objectives:

The goal was to drill and find gold bearing paleo channels on Calder Creek.

The drilling and sampling was to determine gold values and bedrock depths and characteristics of the ground..

The loess deposit on the right limit of Calder Creek would have moved the creek to the left and the paleochannel would then be under the right limit bench. The right limit was targeted and drilled at locations on the right limit bench.

There are economic pay channels in the surrounding creeks and tributaries and there is a lack evidence of any systematic exploration and testing done on Calder Creek. Economic gold deposits have been successfully mined on Little Blanche Creek and Canyon Creek to the east, both tributaries of Quartz Creek as is Calder Creek. Eldorado Creek, one of the Klondike's richest creeks is a few kilometers to the north.

Results:

Sonic drilling had been arranged and planned upon to happen in August or September but unfortunately the drill coming out of the States did not reach Whitehorse until September. When it finally arrived in Whitehorse it needed to be worked on, so it wasn't available. Fortunately, though late in the season Gateway Drilling was available in Dawson, and the weather was warmer than average in early October so I contracted them. I began testing the samples and recovered about 40 mg. of gold in one bag in hole #5. The temperature dropped and it wasn't possible to continue testing. Testing will resume in the spring.

Ten holes were drilled in the targeted area on the right limit bench, approximately 900 to 1500 ft, from Calder Creek. The bedrock depth varied from 40 ft. to 18 ft., trending more shallow as one moved further from the creek onto the bench. (see map and drill log report)

Recommendations:

A drilling program of 20 holes using a sonic drill, confirming and extending the 2020 drill program. The sonic drill is very effective and efficient.

Contract Northern Sonic to sonic drill in the spring or summer. They are experienced and do accurate testing of samples and evaluations of placer deposits.

591000E

MAP 115014b
SCALE 1:10,000

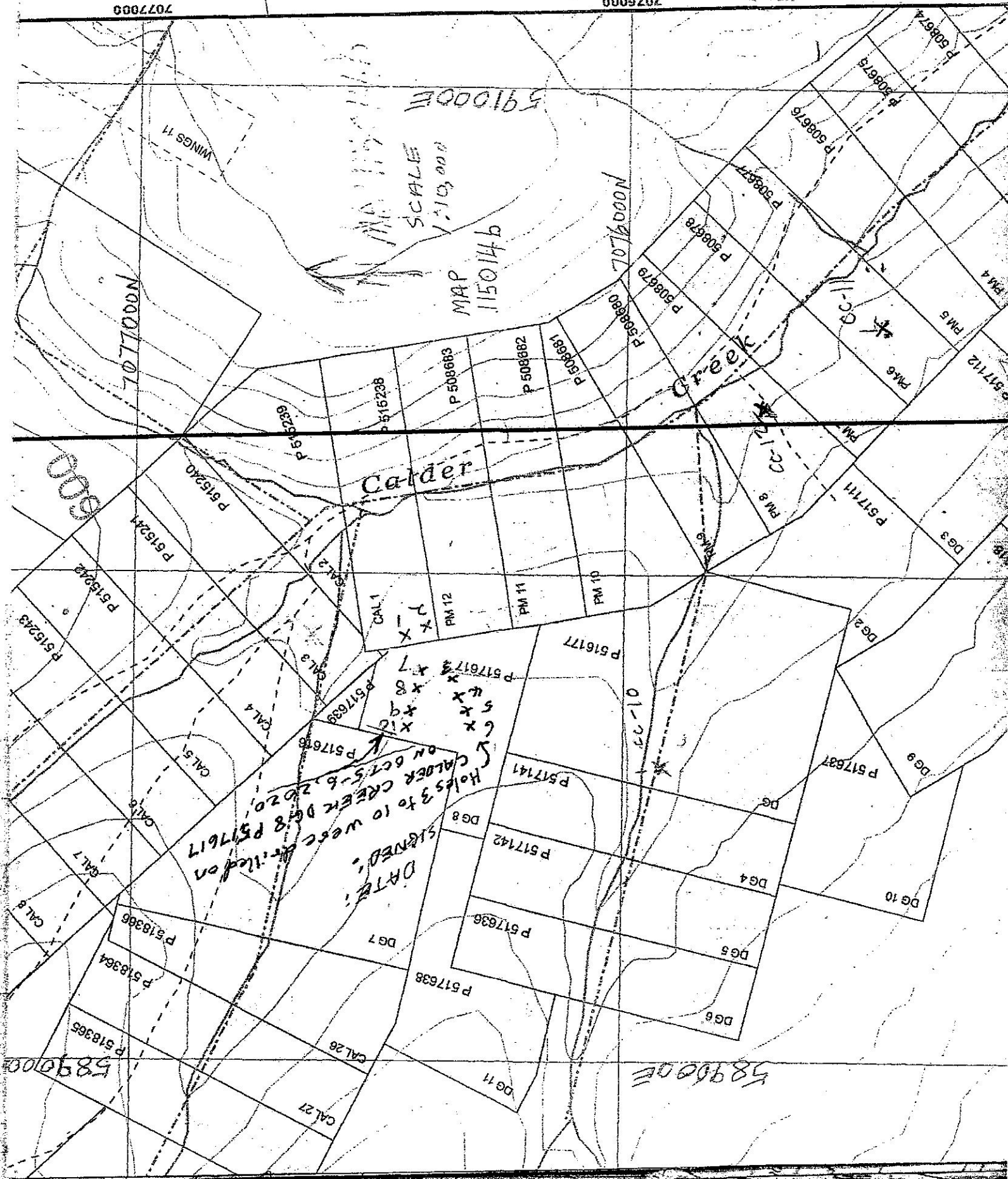
7077000

7007000

Creek

Calder

600



Holds 3 to 10 west division
 on Calder Creek DG 8 P 517617
 on Oct 5-6, 2020.

DATE:
 SIGNED:

CAL 1
 PM 12
 PM 11
 PM 10

CAL 2
 CAL 3
 CAL 4
 CAL 5
 CAL 6
 CAL 7
 CAL 8

P 517617
 P 517618
 P 517619
 P 517620
 P 517621
 P 517622
 P 517623
 P 517624
 P 517625
 P 517626
 P 517627
 P 517628
 P 517629
 P 517630
 P 517631
 P 517632
 P 517633
 P 517634
 P 517635
 P 517636
 P 517637
 P 517638
 P 517639
 P 517640
 P 517641
 P 517642
 P 517643
 P 517644
 P 517645
 P 517646
 P 517647
 P 517648
 P 517649
 P 517650
 P 517651
 P 517652
 P 517653
 P 517654
 P 517655
 P 517656
 P 517657
 P 517658
 P 517659
 P 517660
 P 517661
 P 517662
 P 517663
 P 517664
 P 517665
 P 517666
 P 517667
 P 517668
 P 517669
 P 517670
 P 517671
 P 517672
 P 517673
 P 517674
 P 517675
 P 517676
 P 517677
 P 517678
 P 517679
 P 517680
 P 517681
 P 517682
 P 517683
 P 517684
 P 517685
 P 517686
 P 517687
 P 517688
 P 517689
 P 517690
 P 517691
 P 517692
 P 517693
 P 517694

01-23

589000E

5890100

5890200

5890300

5890400

5890500

5890600

5890700

5890800

5890900

5891000

5891100

5891200

5891300

5891400

5891500

5891600

5891700

5891800

5891900

5892000

5892100

5892200

5892300

5892400

5892500

5892600

5892700

5892800

5892900

5893000

5893100

5893200

5893300

5893400

5893500

5893600

5893700

5893800

5893900

5894000

5894100

5894200

5894300

5894400

5894500

5894600

5894700

5894800

5894900

5895000

5895100

5895200

5895300

5895400

5895500

5895600

5895700

5895800

5895900

5896000

5896100

5896200

5896300

5896400

5896500

5896600

5896700

5896800

5896900

5897000

5897100

5897200

5897300

5897400

5897500

5897600

5897700

5897800

5897900

5898000

5898100

5898200

5898300

5898400

5898500

5898600

5898700

5898800

5898900

5899000

5899100

5899200

5899300

5899400

5899500

5899600

5899700

5899800

5899900

5900000

5900100

5900200

5900300

5900400

5900500

5900600

5900700

5900800

5900900

5901000

5901100

5901200

5901300

5901400

5901500

5901600

5901700

5901800

5901900

5902000

5902100

5902200

5902300

5902400

5902500

5902600

5902700

5902800

5902900

5903000

5903100

5903200

5903300

5903400

5903500

5903600

5903700

5903800

5903900

5904000

5904100

5904200

5904300

5904400

5904500

5904600

5904700

5904800

5904900

5905000

5905100

5905200

5905300

5905400

5905500

5905600

5905700

5905800

5905900

5906000

5906100

5906200

5906300

5906400

5906500

5906600

5906700

5906800

5906900

5907000

5907100

5907200

5907300

5907400

5907500

5907600

5907700

5907800

5907900

5908000

5908100

5908200

5908300

5908400

5908500

5908600

5908700

5908800

5908900

5909000

5909100

5909200

5909300

5909400

5909500

5909600

5909700

5909800

5909900

5910000

Calder Creek Drill Log Oct. 5 Oct 6 2020

#1	0-4 ft.	organics		
	4-20 ft.	Clay		
	20-40 ft.	clay with gravel		
	40-50 ft.	Bedrock	orange	
#2	0-4 ft.	organics		
	4-20 ft.	clay		
	20-32 ft.	clay/gravel		
	32-52 ft.	bedrock	orange	
#3	0-2 ft.	organics		
	2-12 ft.	clay	brown	
	12-26 ft.	clay with gravel		
	26 -35 ft.	bedrock	orange,brown	
#4	0-2 ft.	organics		
	2-12 ft.	clay-dark	brown	
	12-25 ft.	clay with gravel		brown
	25-35 ft.	bedrock	light brown	
#5	0-2 ft.	organics		
	2-11 ft.	clay	brown	
	11-22 ft.	clay with gravel		brown
	22-35 ft.	bedrock	brown	
#6	0-2 ft.	organics		
	2-17 ft.	clay	brown	
	17-27 ft.	clay with gravel		brown
	27 - 38 ft.	bedrock	dark brown	
#7	0-2 ft.	organics		
	2-12 ft.	clay	brown	
	12-23 ft.	clay with gravel		
	23-35 ft.	bedrock	dark brown	
#8	0-2 ft.	organics		
	2-7 ft.	clay	brown	
	7-10 ft.	clay with gravel		
	10-14 ft.	clay	brown	
	14-18 ft.	clay with gravel		brown
	18-28 ft.	bedrock	brown	
#9	0-2 ft.	organics		
	2-7 ft.	clay	dark brown	
	7-20 ft.	clay with gravel		brown

20-25 ft. bedrock brown

#10

0-2 ft. organics

2 - 8 ft. clay brown

drill broke down