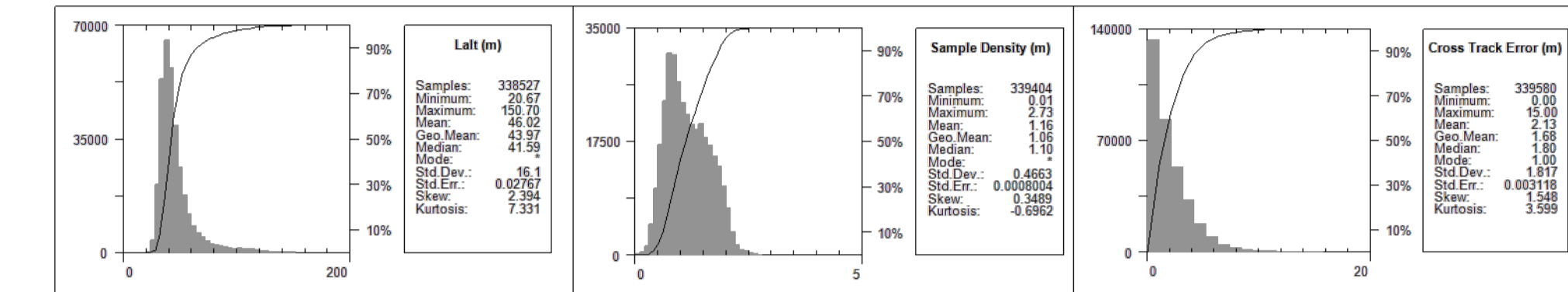
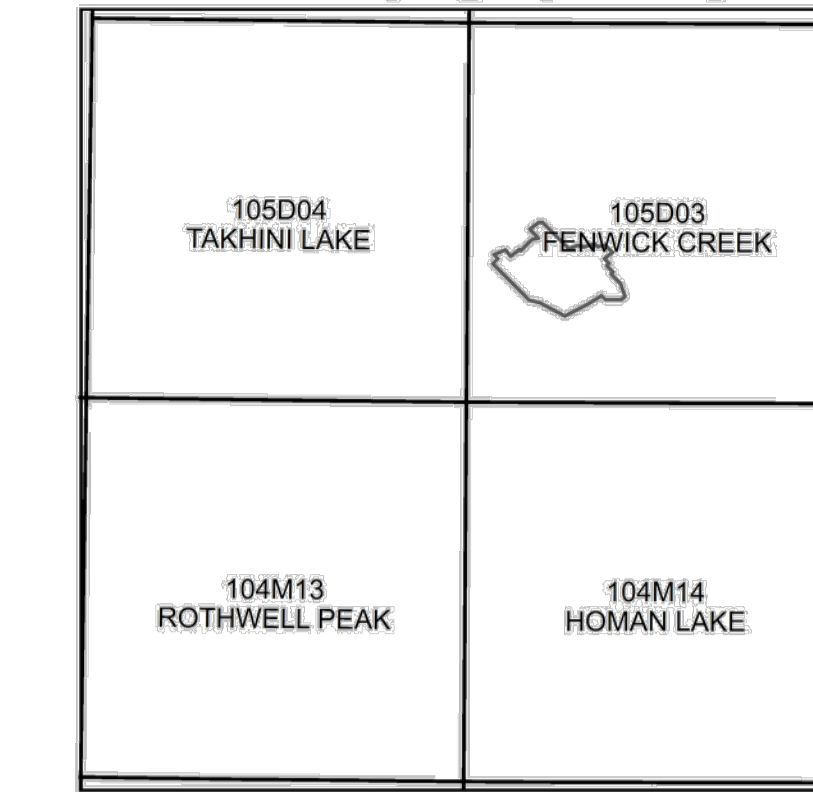


National Topographic System



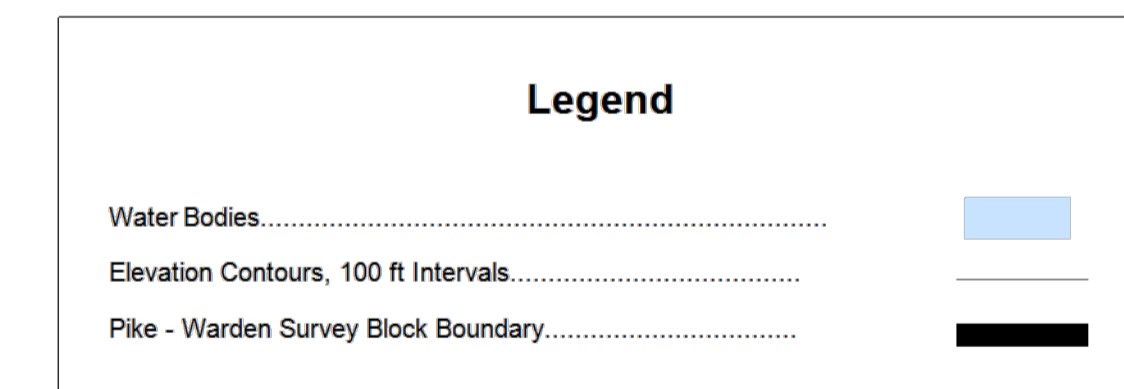
MAP PROJECTION
 Projection: Universal Transverse Mercator Zone 8N
 Datum: WGS 84
 Local Datum Transform: World

PIKE-WARDEN SURVEY SPECIFICATIONS

Survey Dates:	July 8 and July 9, 2021
Survey Base:	Mt. Skukum camp, BC
Aircraft Type:	Airbus AS350 helicopter
Registration:	C-GSVY
Survey Technology:	Gradient magnetic, VLF-EM, and radiometric survey
Total Line km:	395 km
Mean Survey Height:	46.0 meters
Survey Line Spacing:	100 meters
Survey Line Direction:	135°/315°
Tie Line Spacing:	1000 meters
Tie Line Direction:	045°/225°

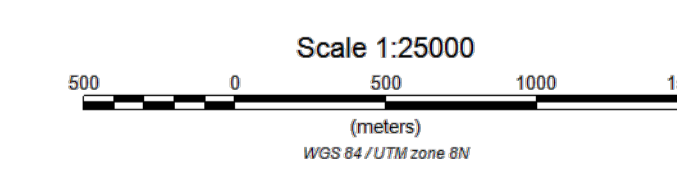
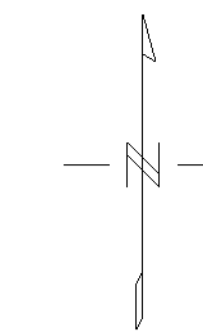
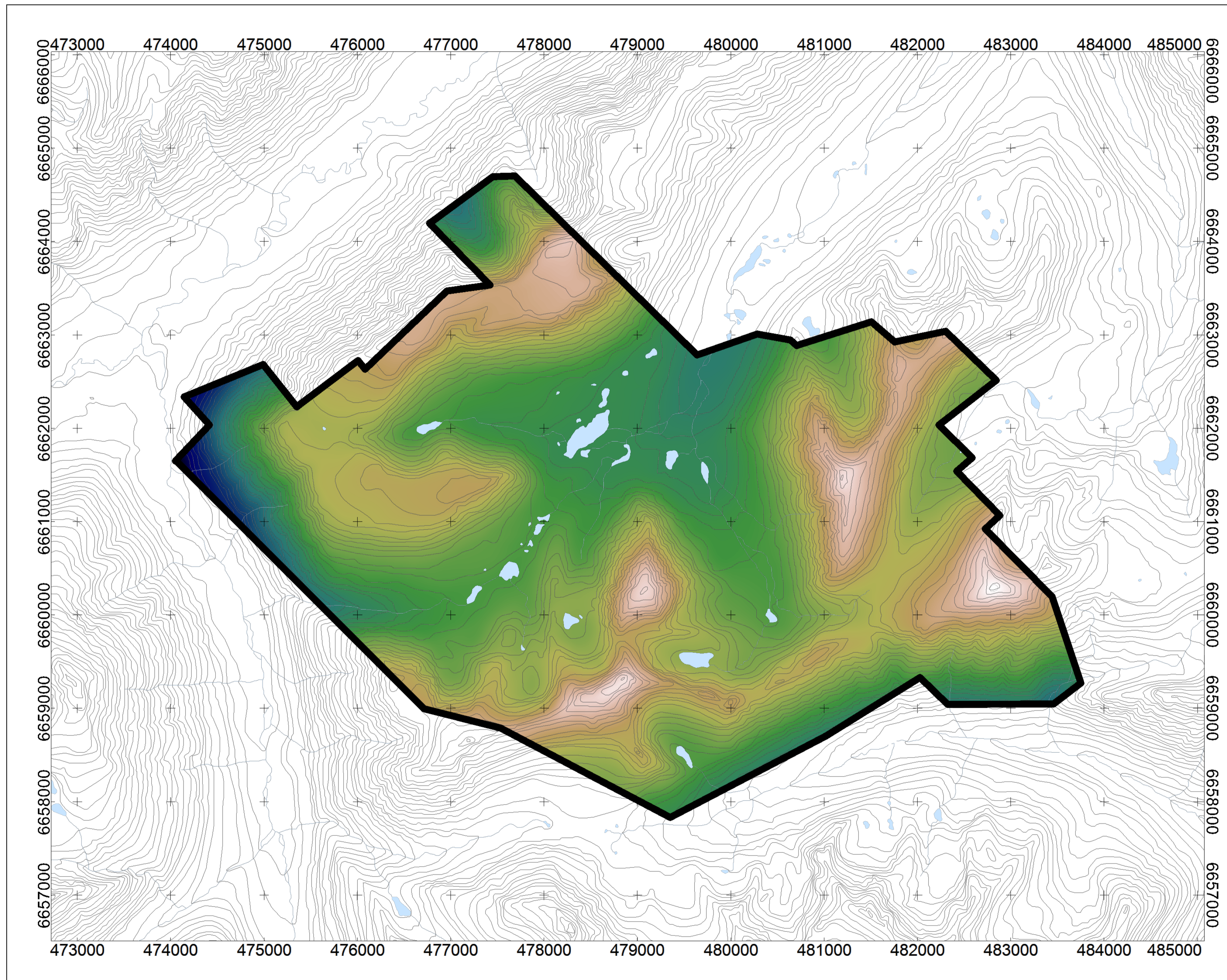
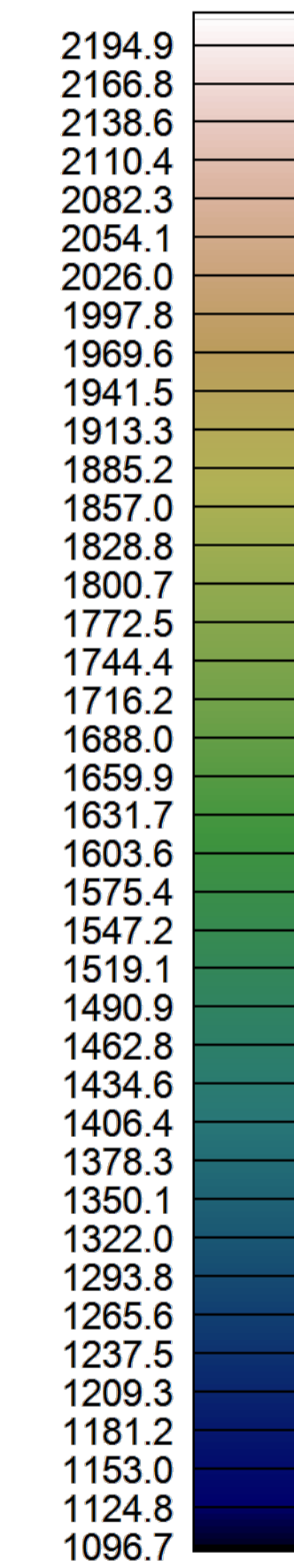
AIRBORNE SURVEY SYSTEM

Magnetometer Sensors:	2 x Scintrex CS-3 Cesium 1 x Geometrics G-822A Cesium
Configuration:	Triple gradient boom with 3 axis compensation
Sample Rate:	20 Hz
Sensitivity:	0.0006 nT $\sqrt{\text{Hz}}$ rms
VLF-EM Receiver:	Herz Totem-2A
Sample Rate:	20 Hz
Transmitter Stations:	NML - LaMoore, ND 25.2 kHz NLK - Seattle, WA 24.8 kHz
Gamma Ray Spectrometer:	Pico Envirotec AGRS-5
Downward-Looking Crystals:	16.8 litres of NaI(Tl)
Upward-Looking Crystal:	4.2 litres of NaI(Tl)
Sample Rate:	1 Hz (Resampled to 20 Hz)



TOPOGRAPHIC REFERENCE
 National Topographic Data Base (NTDB), Canada. Ottawa, ON: Government of Canada, Natural Resources Canada, Center for Topographic Information.
 URL: <http://ftp.geogratis.gc.ca/pub/nrcan_vector/ntdb_bndt/>[2007]

DTM (m)



Pike-Warden Survey Block

Overview Map
 Digital Terrain Model

