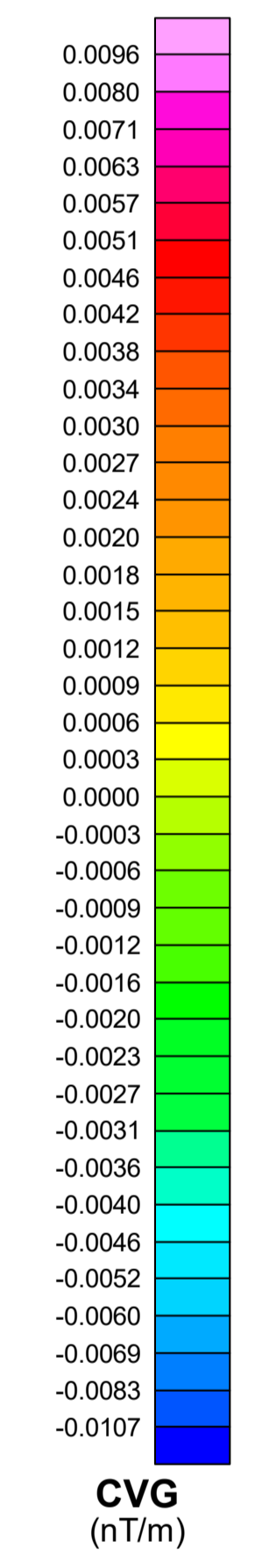
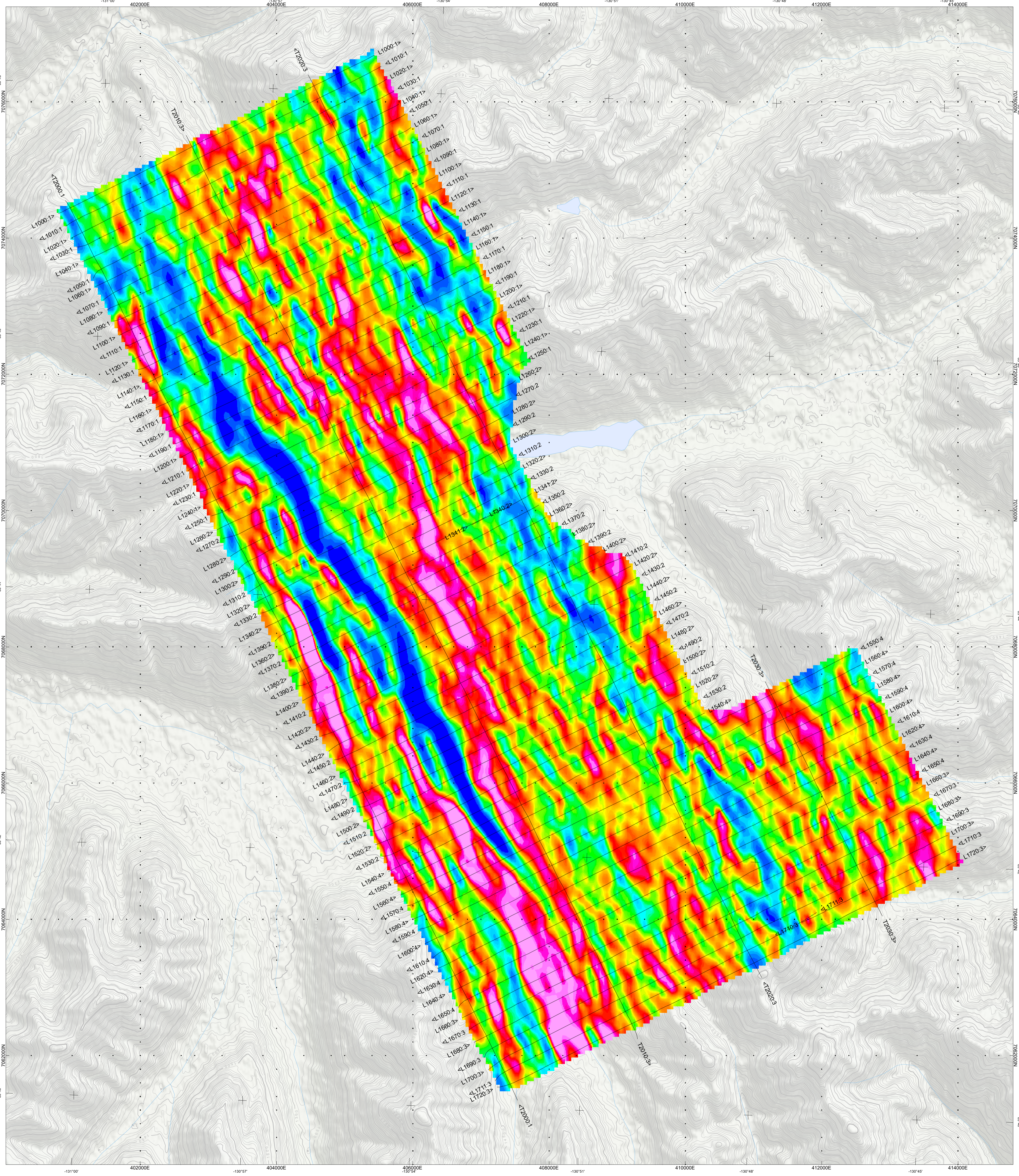




SURVEY SPECIFICATIONS:
 Survey Date: September 8th to September 14th, 2021
 Survey Base: Fireweed Camp Mac Pass, Yukon
 Aircraft: Aerospatiale A-Star 350 B3 (C-FK0)
 Survey Line Spacing: 200 Meters
 Survey Line Direction: N 63° E / N 243° E
 Tie Line Spacing: 2000 Meters
 Tie Line Direction: N 333° E / N 153° E
 Mean Terrain Clearance: 189 Meters
 EM Transmitter Loop: Mean terrain clearance of 122 meters
 Magnetic Sensor: Mean terrain clearance of 146 meters

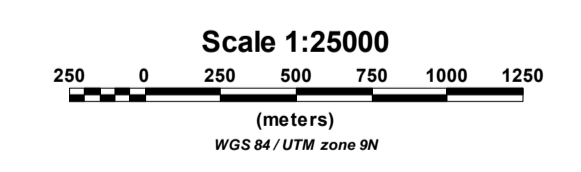
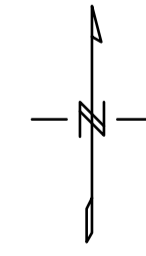
INSTRUMENTS
 Geotech Time Domain Electromagnetic System (VTEM)
 Concentric Rx/Tx Geometry
 Z-Coil Diameter 1.2m
 Transmitter Loop: Diameter 17.6 Meters
 Dipole Moment: 296,126 nA
 Transmitter Wave Form: Trapezoid, Pulse Width 3.55 ms, Base Frequency 30 Hz
 Geometrics High Sensitivity Caesium Magnetometers
 Mag Resolution: 0.02 nT at 10 samples/sec

MAP PROJECTION
 Datum: WGS84
 Projection: Universal Transverse Mercator
 Central Meridian: 128°W (Zone 5N)
 Central Scale Factor: 0.9996
 False Easting/Northing: 500,000m/0m
 Major Axis: 6378137.000
 Inverse Flattening: 298.25722



TOPOGRAPHIC LEGEND:

- Roads
- Streams / Rivers
- Contours / Rivers
- Lakes / Ponds



The topographic data base was derived from 1:250,000 CANVEC data
 Background shading is derived from ASTER GDEM (<https://gdem.cr.usgs.gov/gdem/>)
 Inset data derived from Geocommunities (www.geocomm.com/)

Snowline Gold Corp
Ursa Project
Forks Airstrip, Yukon
 Geotech VTEM System
Calculated Vertical Gradient (CVG)
of Total Magnetic Intensity (TMI)

Flown and processed by Geotech Ltd.
 270 Industrial Parkway South,
 Aurora, Ontario, Canada L4G 3T9
www.geotech.ca

December, 2021