

PHYSIOGRAPHY
The map area is bounded by the South Yukon and North Yukon rivers. The Seattle Creek drainage is an important east-west drainage...

QUATERNARY HOLOCENE
The Quaternary period is characterized by major glaciations and interglaciations. The glacial limit is defined as the limit of the last glacial maximum...

PLEISTOCENE AND HOLOCENE (UNDIVIDED)
The Pleistocene and Holocene are defined as the period of the last glacial maximum and the period of the last glacial maximum...

LATE PLEISTOCENE (MISOCENIC) - MCCONNELL GLACIATION
The McConnell Glaciation is defined as the period of the last glacial maximum and the period of the last glacial maximum...

MIDDLE PLEISTOCENE - PRE-MCCONNELL GLACIATION (UNDIVIDED)
The McConnell Glaciation is defined as the period of the last glacial maximum and the period of the last glacial maximum...

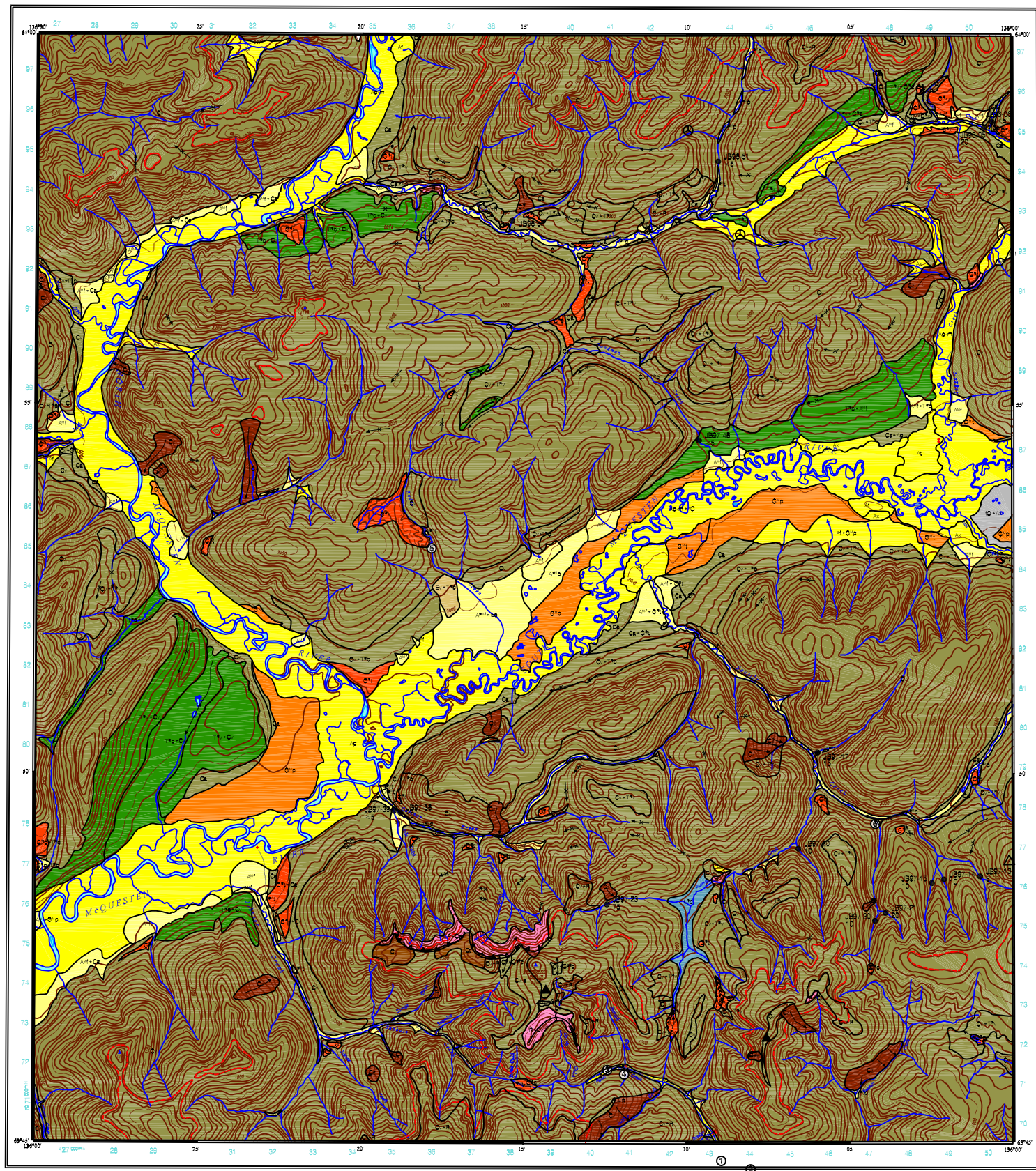
MIDDLE PLEISTOCENE - REID GLACIATION
The Reid Glaciation is defined as the period of the last glacial maximum and the period of the last glacial maximum...

EARLY PLEISTOCENE - PRE-REID GLACIATION
The McConnell Glaciation is defined as the period of the last glacial maximum and the period of the last glacial maximum...

PLEISTOCENE UNDIVIDED
The Pleistocene is defined as the period of the last glacial maximum and the period of the last glacial maximum...

PRE-PLIO-PLEISTOCENE
The McConnell Glaciation is defined as the period of the last glacial maximum and the period of the last glacial maximum...

COMBINED MAP UNITS AND AGE DESIGNATORS
The McConnell Glaciation is defined as the period of the last glacial maximum and the period of the last glacial maximum...



QUATERNARY HOLOCENE

SYMBOLS

HOLOCENE

PLEISTOCENE AND HOLOCENE (UNDIVIDED)

LATE PLEISTOCENE (MISOCENIC) - MCCONNELL GLACIATION

MIDDLE PLEISTOCENE - PRE-MCCONNELL GLACIATION (UNDIVIDED)

MIDDLE PLEISTOCENE - REID GLACIATION

EARLY PLEISTOCENE - PRE-REID GLACIATION

PLEISTOCENE UNDIVIDED

PRE-PLIO-PLEISTOCENE

COMBINED MAP UNITS AND AGE DESIGNATORS

TERRAIN HAZARDS

REFERENCES

RECOMMENDED CITATION

SEATTLE CREEK
YUKON TERRITORY
SCALE 1:50 000

Geological map showing various units and age designators.

Scale bar: 0 to 1000 meters.

North arrow.

Geographic coordinates: 128° 00' W, 63° 00' N.

Map grid: 118 P 16, 118 P 17, 118 P 18, 118 P 19, 118 P 20, 118 P 21, 118 P 22, 118 P 23, 118 P 24, 118 P 25, 118 P 26, 118 P 27, 118 P 28, 118 P 29, 118 P 30, 118 P 31, 118 P 32, 118 P 33, 118 P 34, 118 P 35, 118 P 36, 118 P 37, 118 P 38, 118 P 39, 118 P 40, 118 P 41, 118 P 42, 118 P 43, 118 P 44, 118 P 45, 118 P 46, 118 P 47, 118 P 48, 118 P 49, 118 P 50.

Indian and Northern Affairs Canada
Exploration and Geology Services Division
Yukon Region

Geoscience Map 1998-2
SURFICIAL GEOLOGY OF SEATTLE CREEK CENTRAL YUKON (115 P/16)

by Jeffrey D. Bond
Yukon Geology Program