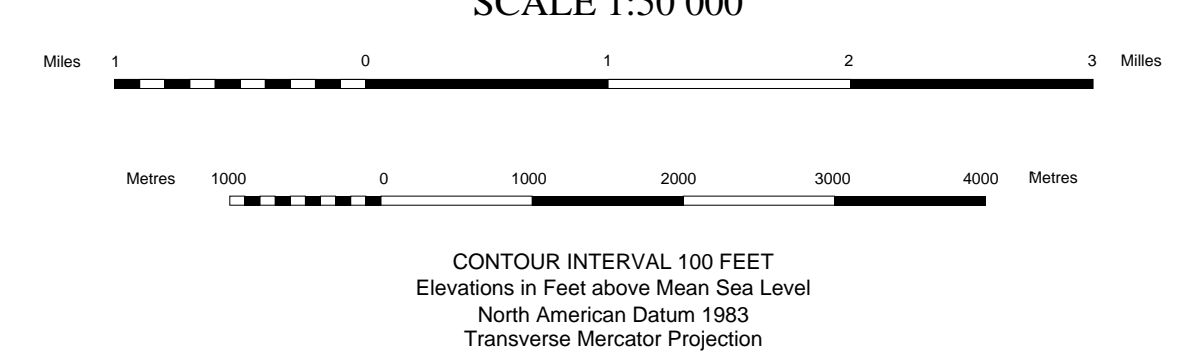


CLEAR CREEK
YUKON TERRITORY
SCALE 1:50 000

Topographic base map provided by SURVEY AND MAPPING BRANCH, DEPARTMENT OF ENERGY, MINES AND RESOURCES
Copyright by Natural Resources Canada
ONE THOUSAND METRE
Universal Transverse Mercator Grid
ZONE 8



1:50,000 scale map is based on contour data APPROXIMATELY 1970-1975. DATUM: NAD 83. ANNI: 1970-1975. ANNI: 1970-1975.

| | | |
|---|---|---|
| 116 A/3 | 116 A/2 | 116 A/1 |
| 115 P/14 | 115 P/15 | 115 P/16 |
| Murphy & Heon Geoscience Map 1996-2 | Murphy & Heon Geoscience Map 1996-2 | Murphy & Heon Geoscience Map 1996-3 |
| 115 P/11 | 115 P/10 | 115 P/9 |

QUATERNARY
Q Alluvium, colluvium and glacial deposits. Stipple indicates approximate extent of historical and current placer gold workings.

LATE CRETACEOUS - PALEOCENE
McQUESTEN INTRUSIONS
KMg Medium- to coarse-grained, locally porphyritic and potassium feldspar megacrystic biotite + muscovite granite and quartz monzonite.

EARLY LATE CRETACEOUS
TOMBSTONE INTRUSIONS
KT Medium- to coarse-grained, locally porphyritic biotite + hornblende, clinopyroxene granite, granodiorite.
KTqs massive medium- to coarse-grained biotite-hornblende-clinopyroxene syenite, quartz syenite. KTqs includes bodies of tourmaline-olivular granitic KTg.
KTg fine-grained, locally porphyritic, primarily granitic dykes.

DEVONIAN-MISSISSIPPIAN
EARN GROUP
DME Grey to black shaly phyllite, siltstone, sandstone, and chert-pebble conglomerate.

ORDOVICIAN-SILURIAN
ROAD RIVER GROUP
Ss Steel Formation: Beige-orange, massive to well laminated, locally ripple cross-laminated, locally dolomitic siltstone and mudstone; common feeding traces and mottling due to bioturbation.
OSD Duo Lake Formation: Grey to black shale and thin-bedded chert.

UPPER CAMBRIAN-ORDOVICIAN (?)
COR Rabikette Formation: Laterally persistent calcareous phyllite, thin- to medium-bedded marble/dolomitic marble, and rare limestone-pebble conglomerate; cherty, greenish calcareous rock near intrusions.

CAMBRIAN
CGc Gull Lake Formation: Tan- to brown-weathering thinly-bedded calcareous siltstone, sandstone, shale and limestone.

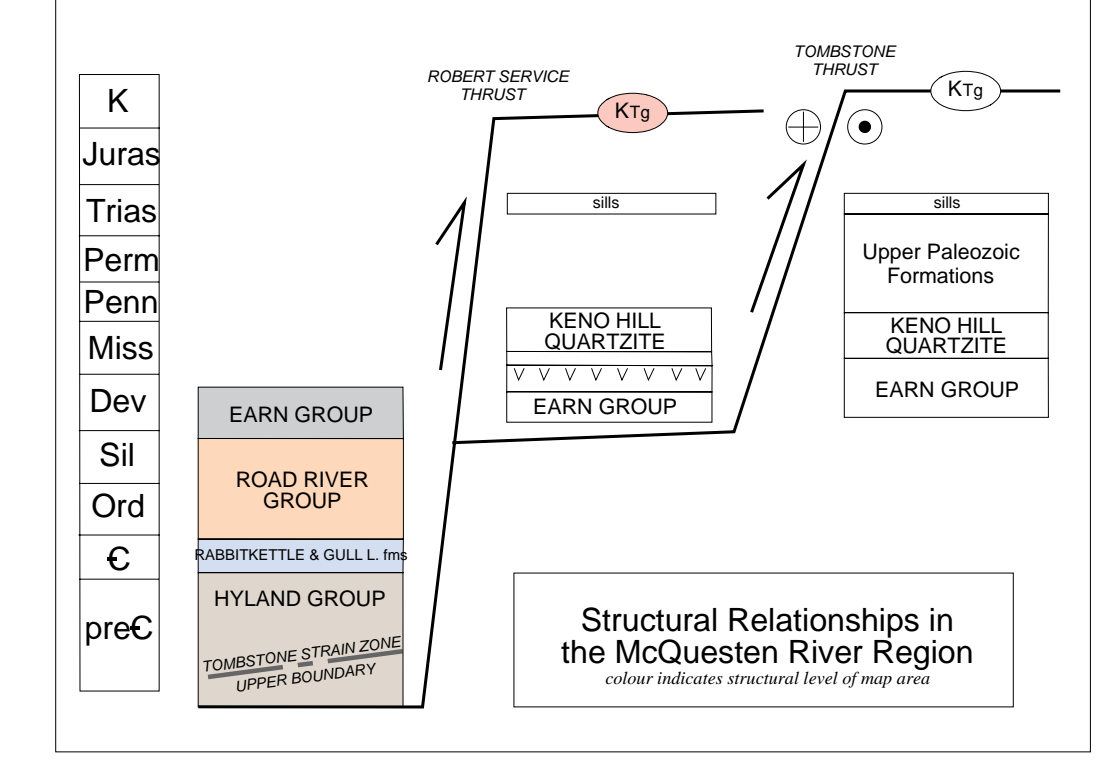
UPPER PROTEROZOIC(?) / LOWER CAMBRIAN
HYLAND GROUP
PY Yusezyu Formation: Isolated blue-grey quartz and chalky white feldspar pebbly meta-sandstone, tan to grey meta-sandstone, muscovite-chlorite phyllite, gneiss and pebble meta-conglomerate, and uncommon sandy marble (see 1). Purple/maroonish siliceous pelitic hornfels and near intrusions.

TOMBSTONE STRAIN ZONE UPPER BOUNDARY
PYT Yusezyu Formation: Prominently foliated and lineated muscovite-chlorite phyllite, quartzofeldspathic and micaceous psammite, gneiss, rare calcareous and marble (see 1).

LEGEND

MINERAL OCCURRENCES
Yukon Minfile

| | | |
|-------------------|-----------|-------------------|
| Intrusion-hosted: | | |
| 115P 011 | Josephine | W-Au |
| 115P 012 | Rhosgobel | W-Au |
| 115P 013 | Pukelman | W-Au |
| 115P 034 | Barney | W-Sn |
| 115P 047 | Zeta | Sn-Ag greisen |
| Vein: | | |
| 115P 023 | Lewis | Au in quartz vein |
| Stratabound: | | |
| 115P 045 | Omega | bedded Ba |
| Work targets: | | |
| 115P 029 | Unnamed | unknown |
| 115P 035 | Unnamed | unknown |
| 115P 040 | Unnamed | unknown |
| 115P 055 | Unnamed | unknown |
| 115P 060 | Unnamed | unknown |



RECOMMENDED CITATION
MURPHY, D.C., HEON, D. and HUNT, J.A., 1996. Geological map of Clear Creek area, western Selwyn Basin, Yukon. Exploration and Geological Services Division, Yukon, Indian and Northern Affairs Canada, Geoscience Map 1996-1, 1:50 000-scale.

This map accompanies MURPHY, D.C., 1996. Geology of the McQuesten River region, northern McQuesten and Mayo map areas, Yukon (115 P/14, 15, 16 and 105 M/13, 14). Exploration and Geological Services Division, Yukon, Indian and Northern Affairs Canada, Bulletin 6.

Digital cartography and drafting by Wil vanKanden, Canada/Yukon Geoscience Office. Any revisions or additional geological information known to the user would be welcomed by the Canada/Yukon Geoscience Office.

Copies of this map, the accompanying report and Yukon Minfile may be purchased from Geoscience Information and Sales, Exploration and Geological Services Division, Indian and Northern Affairs Canada, Room 102-300 Main St. Whitehorse, Yukon Y1A 2B5. PH. 463-667-3204 Fax. 463-667-3188.

Last revisions made June 11, 1996.

SYMBOLS

Geological contact (defined, approximate, assumed and/or covered).....

Fault- displacement unknown (defined, approximate, assumed and/or covered).....

Fold axial surface trace (upright anticline, syncline, overturned syncline, anticline).....

Limit of outcrop.....

Limit of hornfels.....

Bedding (known upright, overturned, unknown).....

Foliation (one tick indicates earliest phase of deformation, two or more indicates subsequent phase(s) of deformation) and mineral or clast elongation lineation.....

Breccia, breccia zone.....

U-Pb age determination sample location and age.....

Line of cross-section.....

Apparent dip of bedding, foliation in cross-section.....

Foliation form lines in cross-section.....

Summer roads.....

Indian and Northern Affairs Canada
Exploration and Geological Services Division
Yukon Region

Geoscience Map 1996-1

**Geological map of Clear Creek area
western Selwyn Basin
Yukon (115 P/14)**

by
Donald C. Murphy, Danielle Heon and Julie A. Hunt
Canada/Yukon Mineral Development Agreement
Geoscience Office