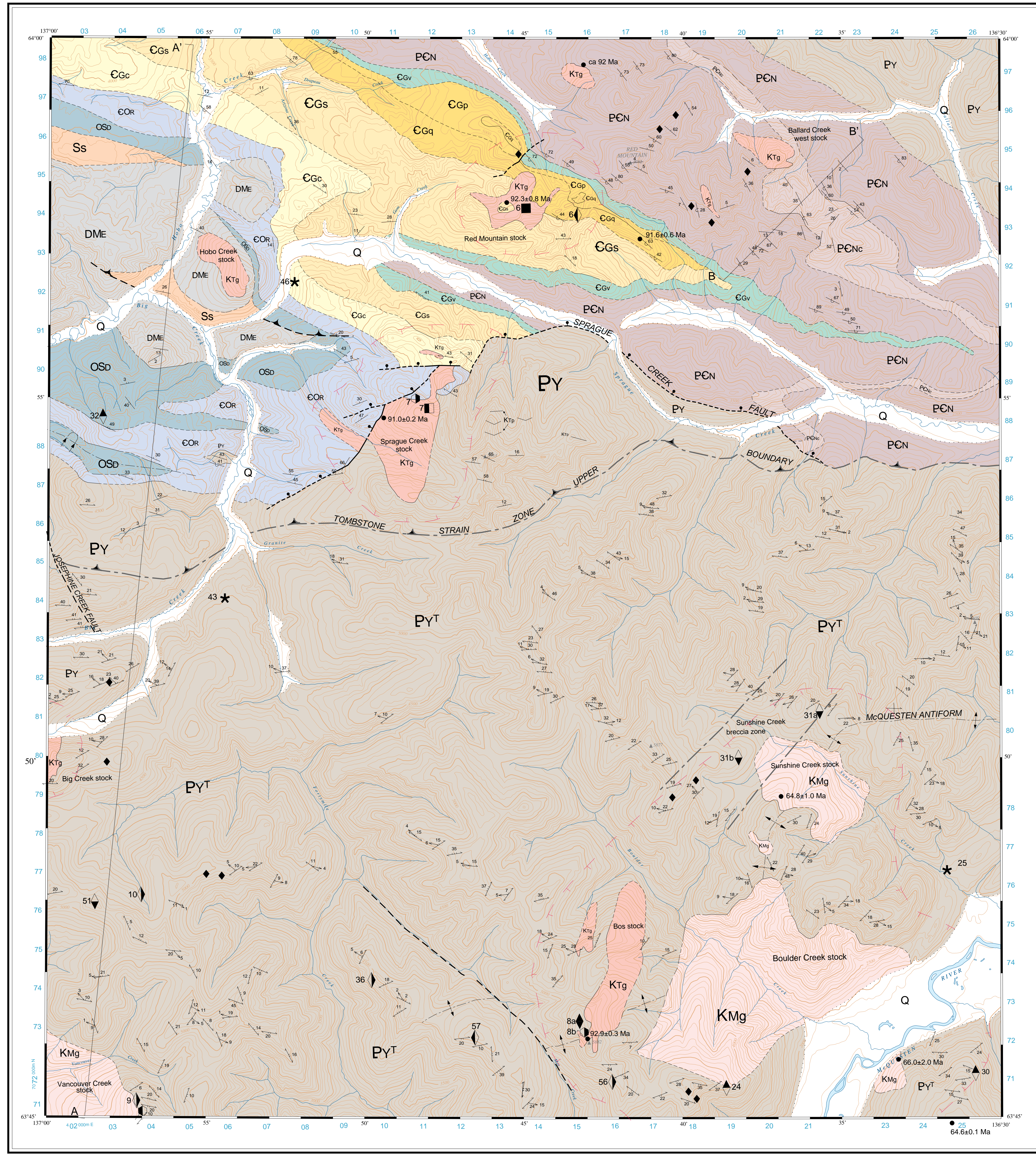


Canada



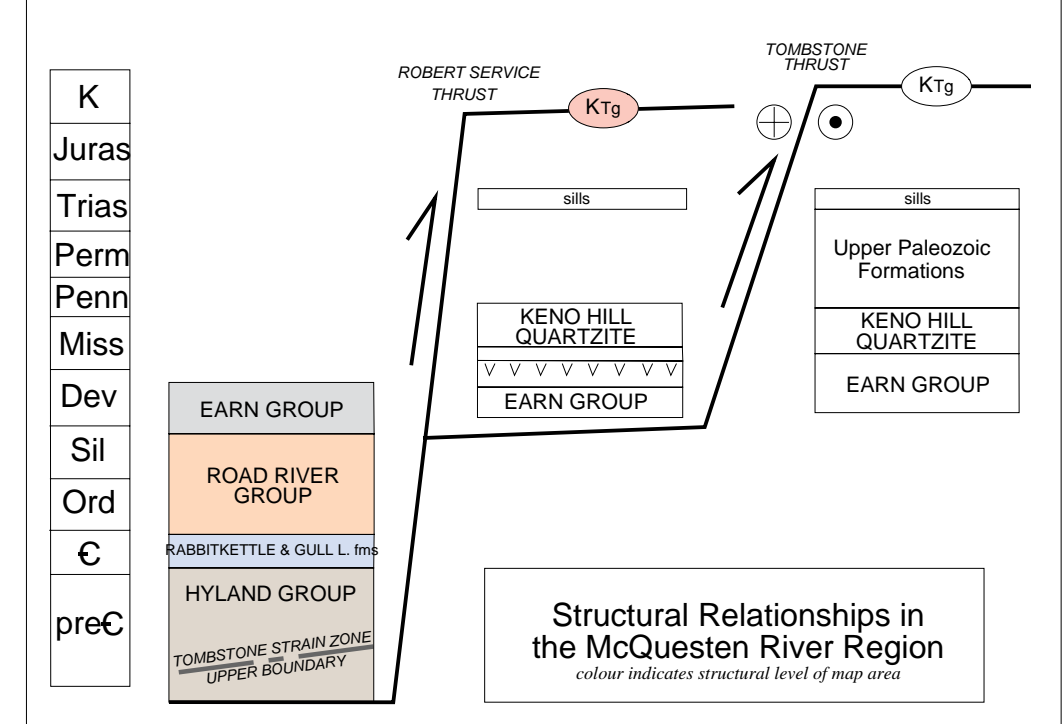
Yukon Government



LEGEND

- QUATERNARY**
 - Q** Alluvium, colluvium and glacial deposits
- LATE CRETACEOUS**
 - McQ** **McQUESTEN INTRUSIONS¹**
Medium- to coarse-grained, locally porphyritic (locally potassium feldspar megacrysts) biotite-muscovite granite and quartz monzonite
- EARLY LATE CRETACEOUS**
 - KTg** **TOMBSTONE INTRUSIONS²**
Medium- to coarse grained, locally porphyritic biotite a hornblende, clinopyroxene granite, quartz monzonite and granodiorite
- DEVONIAN-MISSISSIPPIAN**
 - EARN GROUP**
 - DME** Grey to black shale/phyllite, siltstone, sandstone, and chert-pebble conglomerate
- ORDOVICIAN-SILURIAN**
 - ROAD RIVER GROUP**
 - SS** Steel Formation³ - beige-orange, massive to well laminated, locally ripple cross-laminated, locally columnar siltstone and mudstone, common feeding traces and mottling due to bioturbation
 - OSd** Duo Lake Formation³ - grey to black shale and thin-bedded chert
- UPPER CAMBRIAN-ORDOVICIAN**
 - COcr** Rabbitville Formation³ - laterally persistent calcareous phyllite, thin- to medium-bedded metabasaltic marble, and rare limestone-pebble conglomerate, cherty calcilite rock near intrusions.
- CAMBRIAN**
 - CGc** Gul Lake Formation³ - Tan- to brown-weathering thin-bedded calcareous siltstone, sandstone, shale and limestone
 - CGs** Gul Lake Formation³ - Greenish-grey phyllite with mm-scale siltstone laminae, uncommon sandstone and pebbly sandstone, and greenish-grey chert
 - CGq** Gul Lake Formation³ - Light to dark grey, locally pebbly quartzite (siliceous meta-sandstone) and dark grey phyllite⁴
 - CGv** Gul Lake Formation³ - Dark green massive to fragmental mafic meta-volcanic and volcanoclastic rocks
- UPPER PROTEROZOIC-LOWER CAMBRIAN**
 - HYLAND GROUP^{3,4}**
 - PCN** Natchella Formation³ - maroon and green phyllite with cm-scale green-grey siltstone laminations, grey to green meta-sandstone and pebbly meta-sandstone (grt), and sandy limestone
 - PCnc** Sandy limestone and limestone-breccia-rich member
 - PY** Yusezy Formation⁴ - foliated tan to grey meta-sandstone, muscovite-chlorite phyllite, blue-grey quartz, and cherty white felsic pebbly meta-sandstone (grt) pebble meta-conglomerate and uncommon sandy marble (grt). Purplish maroon siliceous pelitic hornfels and calcilite hornfels near intrusions
- TOMBSTONE STRAIN ZONE UPPER BOUNDARY**
- PY¹** Yusezy Formation⁴ (in Tombstone Strain Zone) - prominently foliated and lineated muscovite-chlorite phyllite, quartzolite/schist and micaceous psammite, girty psammite, rare calc-silicate rock and marble^{5,6}.

MINERAL OCCURRENCES		Yukon Millife	
115P 006	■	Intrusion-hosted	
115P 007	■	HOBO RED MOUNTAIN	Au, Ag, Cu, Sn, Sb
		SPRAGUE MOUNTAIN	
		Sham	
115P 007	○	SPRAGUE MOUNTAIN	Au, Ag, Cu, Sn, Sb
115P 008a	○	EAST RIDGE (TEE)	Sn, Au, Zn, Cu, Ag
115P 008b	○	EAST RIDGE (DANK)	Au, W, Sn, Cu, Zn, Ag
115P 009	○	LUCASDALE	Sn
115P 030	○	OLIVER	Sn, Ag, Zn
		Vein breccias	
115P 008	◆	HOBO RED MOUNTAIN	Au, Ag, Cu
115P 008a	◆	EAST RIDGE (TEE)	Au, Ag, Pb, Zn, Sn
115P 009	◆	LUCASDALE	Ag, Pb
115P 010	◆	RIDGE (STERLING)	Ag, Pb, Zn, Sn
115P 025	▲	BOULDER	Cu
115P 030	▲	OLIVER	Sn, Ag
115P 031a	▼	SIX (SUNSHINE CR. E.)	Sn, Ag
115P 031b	▼	SIX (SUNSHINE CR. W.)	Sn, Ag
115P 032	▲	MDZ	Mo, Zn, Ag, Cu
115P 035	▼	SANDER	Ag, Zn
115P 051	▼	JAMESBROOK	Sn, Ag, Au
115P 056	▼	ONE BAY CREEK	Ag, Pb, Zn, Cu
115P 057	▼	QUEST	Ag, Pb, Zn, Au
		Work targets:	
115P 025	★	TOTH	unknown
115P 043	★	CORTIN	unknown
115P 046	★	WEIZ	unknown



RECOMMENDED CITATION

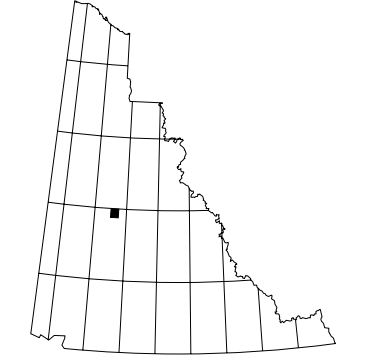
MURPHY, D.C. and HEON, D. 1996. Geological map of Sprague Creek map area, western Selwyn Basin, Yukon (115 P115). Exploration and Geological Services Division, Yukon, Indian and Northern Affairs Canada. Geoscience Map 1996-2, scale 1:50 000. This map accompanies MURPHY, D.C. 1996. Geology of the McQuesten River region northern McQuesten and Mayo map areas, Yukon (115 P14, 15, 16 and 105 M13, 14). Exploration and Geological Services Division, Yukon, Indian and Northern Affairs Canada, Bulletin 6.

Digital cartography and drafting by Will vanRander, Canada/Yukon Geoscience Office. Any revisions or additional geological information known to the user would be welcomed by the Canada/Yukon Geoscience Office.

Copies of this map, the accompanying report and Yukon Millife may be purchased from Geoscience Information and Sales, Exploration and Geological Services Division, Indian and Northern Affairs Canada, Room 102-300 Main St., Whitehorse, Yukon Y1A 2S5. Ph. 403-667-3204 Fax 403-667-3198.

Last revisions made June 11, 1996.

- SYMBOLS**
- Geological contact (defined, approximate, assumed and/or covered):
- Fault (defined, approximate, assumed and/or covered):
- Thrust fault - teeth on hanging wall (defined, approximate, assumed and/or covered):
- Normal fault - circle on downthrown side (defined, approximate, assumed and/or covered):
- Fold axial surface trace (upright anticline, syncline, overturned syncline, anticline):
- Limit of outcrop:
- Limit of hornfels:
- Bedding (known upright, overturned, unknown):
- Foliation (one tick indicates earliest phase of deformation, two or more indicates subsequent phases) of deformation and mineral or cleat elongation lineation:
- Breccia, breccia zone:
- U-Pb age determination sample location and age:
- Line of cross-section:
- Apparent dip of bedding; bedding, top indicated; foliation in cross-section:
- Foliation form lines in cross-section:
- Summer roads:



Transcribed here with the SURVEY AND MAPPING BRANCH, DEPARTMENT OF ENERGY, MINES AND RESOURCES. Copyright by Her Majesty the Queen in Right of Canada.

ONE THOUSAND METRE Universal Transverse Mercator Grid ZONE 8

SPRAGUE CREEK YUKON TERRITORY SCALE 1:50 000

Contours interval 100 FEET Elevations in Feet above Mean Sea Level North American Datum 1983 Transverse Mercator Projection

116 A3	116 A2	116 A1
115 P14	THIS MAP	115 P16
115 P11	115 P10	115 P9

Indian and Northern Affairs Canada
Exploration and Geological Services Division
Yukon Region

Geoscience Map 1996-2

**Geological map of Sprague Creek area
western Selwyn Basin, Yukon
NTS 115P/15**

by
Donald C. Murphy and Daniele Heon
Canada/Yukon Mineral Development Agreement
Geoscience Office