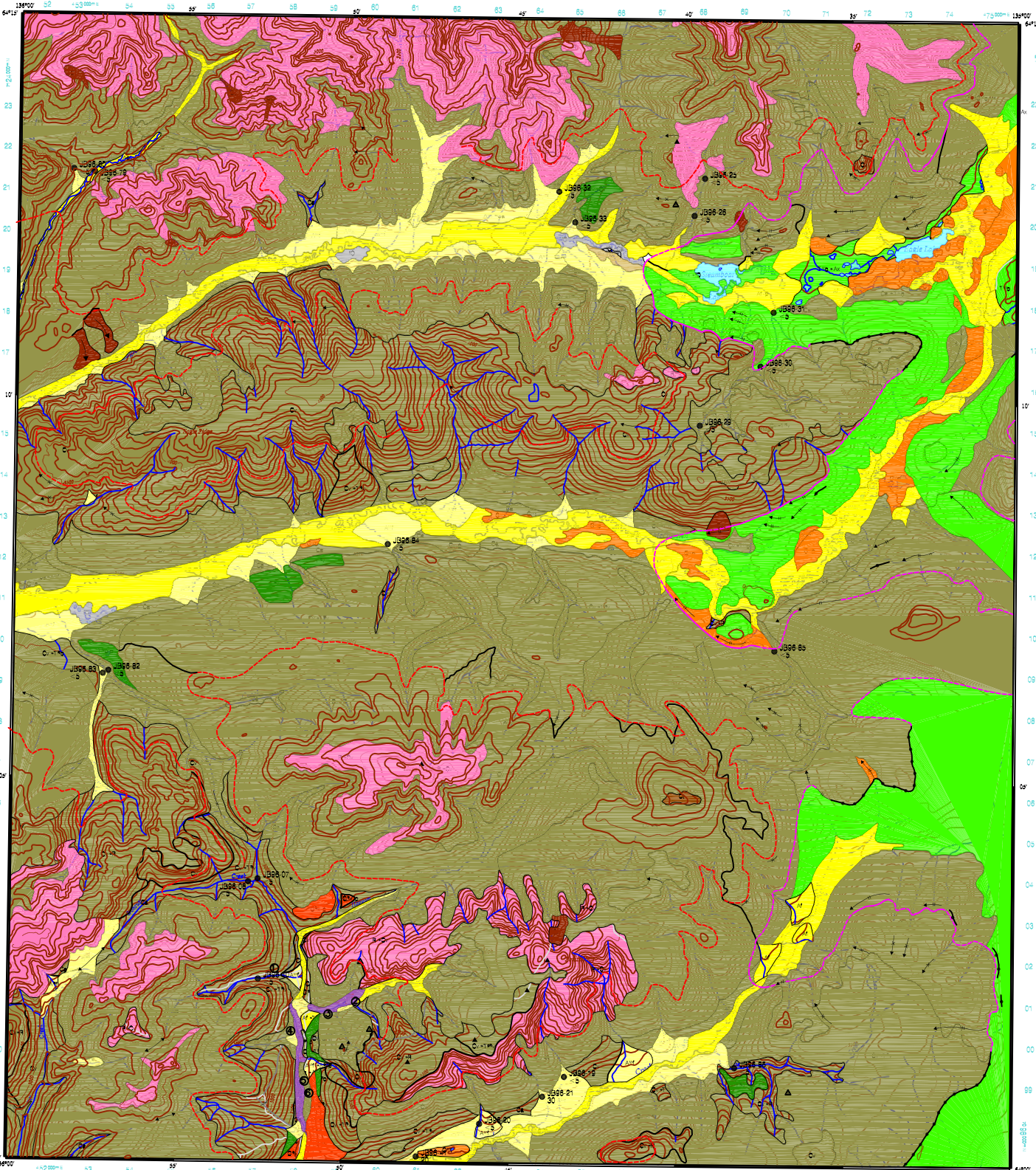


DESCRIPTIVE NOTES

PHYSIOGRAPHY
The map area is composed of three main physiographic units: the Saginaw, the Yukon and the Peel. The Saginaw unit is the most extensive and is composed of the Saginaw, the Yukon and the Peel. The Yukon unit is the most extensive and is composed of the Yukon, the Peel and the Saginaw. The Peel unit is the most extensive and is composed of the Yukon, the Peel and the Saginaw.



QUATERNARY

HOLOCENE
Alluvial Deposits (A) - sand and gravel with minor silt and clay deposited in modern drainage channels. Common in Saginaw, Yukon and Peel. (A) - sand and gravel with minor silt and clay deposited in modern drainage channels. Common in Saginaw, Yukon and Peel.

Medial Deposits (M) - fine to medium grained sand, silt and clay deposited in modern drainage channels. Common in Saginaw, Yukon and Peel. (M) - fine to medium grained sand, silt and clay deposited in modern drainage channels. Common in Saginaw, Yukon and Peel.

Late Pleistocene (M) - angular gravel, sand, silt and clay deposited in modern drainage channels. Common in Saginaw, Yukon and Peel. (M) - angular gravel, sand, silt and clay deposited in modern drainage channels. Common in Saginaw, Yukon and Peel.

Early Pleistocene (E) - angular gravel, sand, silt and clay deposited in modern drainage channels. Common in Saginaw, Yukon and Peel. (E) - angular gravel, sand, silt and clay deposited in modern drainage channels. Common in Saginaw, Yukon and Peel.

Pre-Quaternary (P) - bedrock, primarily igneous, metamorphic and sedimentary. (P) - bedrock, primarily igneous, metamorphic and sedimentary.

Other symbols and descriptions for geological features.

Other symbols and descriptions for geological features.

Other symbols and descriptions for geological features.

Other symbols and descriptions for geological features.

Other symbols and descriptions for geological features.

Other symbols and descriptions for geological features.

Other symbols and descriptions for geological features.

Other symbols and descriptions for geological features.

Other symbols and descriptions for geological features.

Other symbols and descriptions for geological features.

Other symbols and descriptions for geological features.

Other symbols and descriptions for geological features.

Other symbols and descriptions for geological features.

Other symbols and descriptions for geological features.

Other symbols and descriptions for geological features.

Other symbols and descriptions for geological features.

Other symbols and descriptions for geological features.

Other symbols and descriptions for geological features.

Other symbols and descriptions for geological features.

Other symbols and descriptions for geological features.

Other symbols and descriptions for geological features.

Other symbols and descriptions for geological features.

Other symbols and descriptions for geological features.

Other symbols and descriptions for geological features.

Other symbols and descriptions for geological features.

Other symbols and descriptions for geological features.

Other symbols and descriptions for geological features.

Other symbols and descriptions for geological features.

Other symbols and descriptions for geological features.

Other symbols and descriptions for geological features.

Other symbols and descriptions for geological features.

Other symbols and descriptions for geological features.

Other symbols and descriptions for geological features.

Other symbols and descriptions for geological features.

Other symbols and descriptions for geological features.

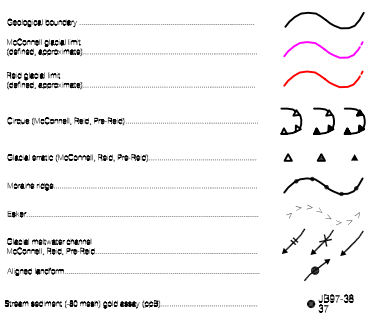
Other symbols and descriptions for geological features.

Other symbols and descriptions for geological features.

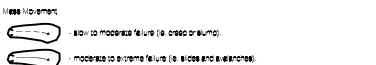
Other symbols and descriptions for geological features.

Other symbols and descriptions for geological features.

SYMBOLS



TERRAIN HAZARDS



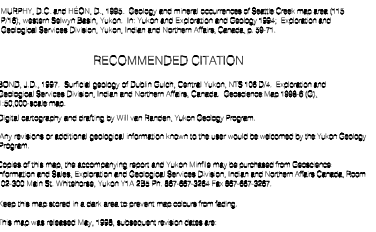
REFERENCES

- BERGER, G.W., 1964. Age of the Saginaw River. Geological Survey of Canada, Bulletin 118.
BOYD, J.D., 1967. The Quaternary of the Yukon and Peel Basins. Geological Survey of Canada, Bulletin 118.
GREEN, L.H., 1971. Geology of the Yukon and Peel Basins. Geological Survey of Canada, Bulletin 118.

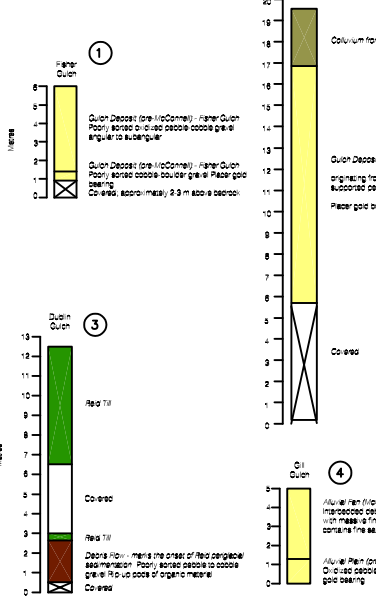
RECOMMENDED CITATION

Boyd, J.D., 1967. Surface geology of the Yukon and Peel Basins. Geological Survey of Canada, Bulletin 118.
Boyd, J.D., 1967. Surface geology of the Yukon and Peel Basins. Geological Survey of Canada, Bulletin 118.

STRATIGRAPHIC SECTIONS



STRATIGRAPHIC SECTIONS



DUBLIN GULCH YUKON TERRITORY SCALE 1:50 000

Table with 3 columns and 3 rows showing geological unit labels and their corresponding symbols. The table lists units like 118 A/B, 108 D/B, 108 D/B, 118 A/B, 108 D/B, 108 D/B, 118 A/B, 108 D/B, 108 D/B.

Indian and Northern Affairs Canada, Exploration and Geological Services Division, Yukon Region.

Geoscience Map 1998-6 SURFICIAL GEOLOGY OF DUBLIN GULCH CENTRAL YUKON (106 D/4)

by J.D. Boyd, Yukon Geology Program