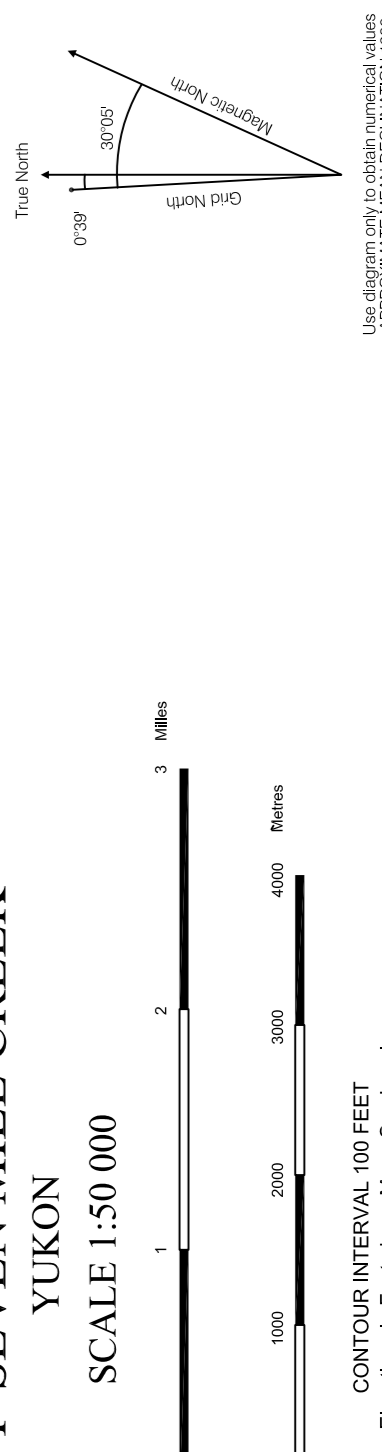


THIRTY-SEVEN MILE CREEK
YUKON
SCALE 1:50 000



115 E11	105 E4	105 E3	105 E2
105 E10	105 E9	105 E8	105 E7
105 E6	105 E5	105 E4	105 E3
105 E2	105 E1	105 D12	105 D11
105 D10	105 D9	105 D8	105 D7
105 D6	105 D5	105 D4	105 D3
105 D2	105 D1	105 C14	105 C13
105 C12	105 C11	105 C10	105 C9
105 C8	105 C7	105 C6	105 C5
105 C4	105 C3	105 C2	105 C1
105 B16	105 B15	105 B14	105 B13
105 B12	105 B11	105 B10	105 B9
105 B8	105 B7	105 B6	105 B5
105 B4	105 B3	105 B2	105 B1
105 A9	105 A8	105 A7	105 A6
105 A5	105 A4	105 A3	105 A2
105 A1	105 A0	105 A-1	105 A-2

Reproduced from previous editions of the Geological Survey of Canada map series 1:50,000 scale, Yukon Region, Indian and Northern Affairs Canada, Geoscience Map 3003-2, 1:50,000 scale.

Copyright © 2003 by Yukon Geological Survey

ONE THOUSAND METRE
UNIVERSITY MICROFILMS INTERNATIONAL
SERIALS ACQUISITION
300 N ZEEB ROAD
ANN ARBOR MI 48106-1500
USA

CONTOUR INTERVAL 100 FEET
Elevations in Feet above Mean Sea Level
Topographic Information
Transverse Mercator Projection

- QUATERNARY**
- Q** Unconsolidated recent deposits of alluvial, glacial, lacustrine, fluvial and cultural origin.
- TERTIARY**
- EARLY EOCENE**
 - E1** Brownish-grey, medium- to fine-grained, locally with orange to red phreatic iron.
 - E2** Gypsiferous, generally north-trending.
 - E3** Orange-brown, massive, locally with orange to red phreatic iron.
 - LATE PALEOCENE**
 - E4** Fine-grained, orange to red, locally with orange to red phreatic iron.
 - E5** Coarse-grained, orange to red, locally with orange to red phreatic iron.
 - E6** Sandstone, locally with orange to red phreatic iron.
 - E7** Sandstone, locally with orange to red phreatic iron.
 - E8** Sandstone, locally with orange to red phreatic iron.
 - E9** Sandstone, locally with orange to red phreatic iron.
- LATE CRETACEOUS**
- C1** Dark grey, massive, locally with orange to red phreatic iron.
 - C2** Dark grey, massive, locally with orange to red phreatic iron.
 - C3** Dark grey, massive, locally with orange to red phreatic iron.
 - C4** Dark grey, massive, locally with orange to red phreatic iron.
 - C5** Dark grey, massive, locally with orange to red phreatic iron.
 - C6** Dark grey, massive, locally with orange to red phreatic iron.
 - C7** Dark grey, massive, locally with orange to red phreatic iron.
 - C8** Dark grey, massive, locally with orange to red phreatic iron.
 - C9** Dark grey, massive, locally with orange to red phreatic iron.
 - C10** Dark grey, massive, locally with orange to red phreatic iron.
 - C11** Dark grey, massive, locally with orange to red phreatic iron.
 - C12** Dark grey, massive, locally with orange to red phreatic iron.
 - C13** Dark grey, massive, locally with orange to red phreatic iron.
 - C14** Dark grey, massive, locally with orange to red phreatic iron.
 - C15** Dark grey, massive, locally with orange to red phreatic iron.
 - C16** Dark grey, massive, locally with orange to red phreatic iron.
 - C17** Dark grey, massive, locally with orange to red phreatic iron.
 - C18** Dark grey, massive, locally with orange to red phreatic iron.
 - C19** Dark grey, massive, locally with orange to red phreatic iron.
 - C20** Dark grey, massive, locally with orange to red phreatic iron.
 - C21** Dark grey, massive, locally with orange to red phreatic iron.
 - C22** Dark grey, massive, locally with orange to red phreatic iron.
 - C23** Dark grey, massive, locally with orange to red phreatic iron.
 - C24** Dark grey, massive, locally with orange to red phreatic iron.
 - C25** Dark grey, massive, locally with orange to red phreatic iron.
 - C26** Dark grey, massive, locally with orange to red phreatic iron.
 - C27** Dark grey, massive, locally with orange to red phreatic iron.
 - C28** Dark grey, massive, locally with orange to red phreatic iron.
 - C29** Dark grey, massive, locally with orange to red phreatic iron.
 - C30** Dark grey, massive, locally with orange to red phreatic iron.
 - C31** Dark grey, massive, locally with orange to red phreatic iron.
 - C32** Dark grey, massive, locally with orange to red phreatic iron.
 - C33** Dark grey, massive, locally with orange to red phreatic iron.
 - C34** Dark grey, massive, locally with orange to red phreatic iron.
 - C35** Dark grey, massive, locally with orange to red phreatic iron.
 - C36** Dark grey, massive, locally with orange to red phreatic iron.
 - C37** Dark grey, massive, locally with orange to red phreatic iron.
 - C38** Dark grey, massive, locally with orange to red phreatic iron.
 - C39** Dark grey, massive, locally with orange to red phreatic iron.
 - C40** Dark grey, massive, locally with orange to red phreatic iron.
 - C41** Dark grey, massive, locally with orange to red phreatic iron.
 - C42** Dark grey, massive, locally with orange to red phreatic iron.
 - C43** Dark grey, massive, locally with orange to red phreatic iron.
 - C44** Dark grey, massive, locally with orange to red phreatic iron.
 - C45** Dark grey, massive, locally with orange to red phreatic iron.
 - C46** Dark grey, massive, locally with orange to red phreatic iron.
 - C47** Dark grey, massive, locally with orange to red phreatic iron.
 - C48** Dark grey, massive, locally with orange to red phreatic iron.
 - C49** Dark grey, massive, locally with orange to red phreatic iron.
 - C50** Dark grey, massive, locally with orange to red phreatic iron.

MINERAL OCCURRENCES

Yukon MINIFILE

Number	Name	Deposit type
105D 045	INGRAM	(on 105 D12) work target
105D 077	LARSON	work target
105D 081	STONY	Zn claim
105D 082	FARM	work target
105D 083	WAGON	work target
105D 087	WAGON	work target
105D 087	TROT	work target
105D 128	THIRTY-SEVEN	work target
105D 133	HYDE	work target
105E 008	RUTH	Cu claim

REFERENCES

Hart, C.J.R., 1997. Geology of Upper Laberge map area, southern Yukon (1:50,000 scale). Yukon Geological Survey, Energy, Mines and Resources, Yukon Region, Indian and Northern Affairs Canada, Geoscience Map 3003-2, 1:50,000 scale.

Hart, C.J.R. and Readler, J.K., 1990. Geology of the Cassiar, Fernside Creek and part of the Stewart River map-areas, west-central Yukon. Geological Survey of Canada Paper 73-41 (includes Map 17-1974).

Templeman-Kluit, D.J., 1974. Reconnaissance geology of Atkashtik Lake, Stog and part of Stewart River map-areas, west-central Yukon. Geological Survey of Canada Paper 73-41 (includes Map 17-1974).

Templeman-Kluit, D.J., 1984. Maps of Laberge (105 E) and Carmacks (115 I) map sheets, with legends. Geological Survey of Canada Open File 110.

Wheeler, J.O., 1981. Whitehorse map-area. Geological Survey of Canada Memoir 312, 156 p.

Yukon MINIFILE, 2002. Whitehorse, NTS 105D. Exploration and Geological Services Division, Yukon Region, Indian and Northern Affairs Canada.

RECOMMENDED CITATION

Hart, C.J.R., 2003. Geology of Thirty-seven Mile Creek map area (NTS 105D13) southern Yukon (1:50,000 scale). Yukon Geological Survey, Energy, Mines and Resources, Yukon Government, Geoscience Map 2003-2.

This map was originally published by Exploration and Geological Services, Yukon Region, Indian and Northern Affairs Canada, Geoscience Map 3003-2, 1:50,000 scale. The map was revised by Exploration and Geological Services, Yukon Region, Indian and Northern Affairs Canada, Geoscience Map 2003-2, 1:50,000 scale. A digital PDF (Portable Document Format) file of this map may be downloaded free of charge from the Yukon Geological Survey website: www.geology.gov.yk.ca.

Store the map in a dark area to prevent the colours from fading.

Yukon Geological Survey
Energy, Mines and Resources
Yukon Government

Geoscience Map 2003-2

Geology of Thirty-seven Mile Creek map area (105D13) southern Yukon (1:50 000 scale)

by
Craig J.R. Hart