

**RECOMMENDED CITATION**

Bordet, E., 2019. Bedrock geology map of the eastern Lake Laberge area (parts of NTS 105E/2, 3, 6, 7 and 105D/15, 16). Yukon Geological Survey, Geoscience Map GM-2019-1, scale 1:50 000, 2 sheets.

Digital cartography and drafting by Esther Bordet, Yukon Geological Survey.

Any revisions or additional geological information known to the user would be welcomed by the Yukon Geological Survey.

A paper copy of this map may be obtained from the Yukon Geological Survey, Energy, Mines and Resources, Government of Yukon, Room 102, 300 Main Street, Whitehorse, Yukon, Y1A 2B5. Email: geology@gov.yk.ca.

A digital PDF (Portable Document File) of this map may be accessed free of charge from the Yukon Geological Survey website: <http://www.geology.gov.yk.ca>.

The digital geology dataset for this map is part of the Yukon Digital Bedrock Geology that can be downloaded from [www.geology.gov.yk.ca](http://www.geology.gov.yk.ca)

**REFERENCES**

Bordet, E., Crowley, J.L. and Piercy, S.J., 2019. Geology of the eastern Lake Laberge area, south central Yukon. Yukon Geological Survey, Open File 2019-1.

Colpron, M., 2011. Geological compilation of Whitehorse trough - Whitehorse (105D), Lake Laberge (105E), and part of Carmacks (115). Geology (105), Ashcroft Lake (115), Quat Lake (102) and Teslin (105C). Yukon Geological Survey, Geoscience Map 2011-1, scale 1:250,000.

Colpron, M. and Friedman, R.M., 2008. Late Proterozoic igneous rocks of the Whitehorse trough, Yukon. In: Yukon Geology and Geology 2007, D.S. Emrod, L.R. Blackburn, R.P. Hill and L.H. Weston (eds.), Yukon Geological Survey, Yukon Region, Bulletin 8, 77 p.

Hart, C.J.R., 1997. A transect across northern British Columbia: geology of the northern Whitehorse map area, southern Yukon Territory (105D/13-16). Yukon and Northern Alberta Canada, Exploration and Geological Services Division, Yukon Region, Bulletin 8, 77 p.

Hart, C.J.R. and Hunt, J.A., 2003a. Geology of Joe Mountain map area (105D/15), southern Yukon (1:50 000 scale). Yukon Geological Survey, Energy, Mines and Resources, Yukon Territorial Government, Geoscience Map 2003-4.

Hart, C.J.R. and Hunt, J.A., 2003b. Geology of Mount McClinton map area (NTS 105D/16), southern Yukon (1:50 000 scale). Yukon Geological Survey, Energy, Mines and Resources, Yukon Territorial Government, Geoscience Map 2003-5.

Tempelman-Kluit, D.J., 1984. Geology of Laberge (105E) and Carmacks (115). Yukon Territory, Geological Survey of Canada, Open File 1101, scale 1:250,000.

Tempelman-Kluit, D.J., 2009. Geology of Carmacks and Laberge map areas, central Yukon. Incomplete draft manuscript on stratigraphy, structure and its early interpretation (ca. 1986). Geological Survey of Canada, Open File 5882, 389 p.

Tozer, E., 1958. Stratigraphy of the Levees River Group (Trescott), central Laberge area, Yukon Territory. Geological Survey of Canada, Bulletin 43.

Yukon Geology. 2018. Yukon Geology - A database of Yukon geochronology sample locations. M. Colpron (compiler), Yukon Geological Survey. <http://yukon2.maps.arcgis.com/home?> [accessed November 22, 2019].

Yukon MINFILE. 2018. Yukon MINFILE - A database of mineral occurrences, Yukon Geological Survey. <http://data.geology.gov.yk.ca/> [accessed November 18, 2019].

**Inset map: Vegetation coverage in the east Lake Laberge area**

**NOTES**

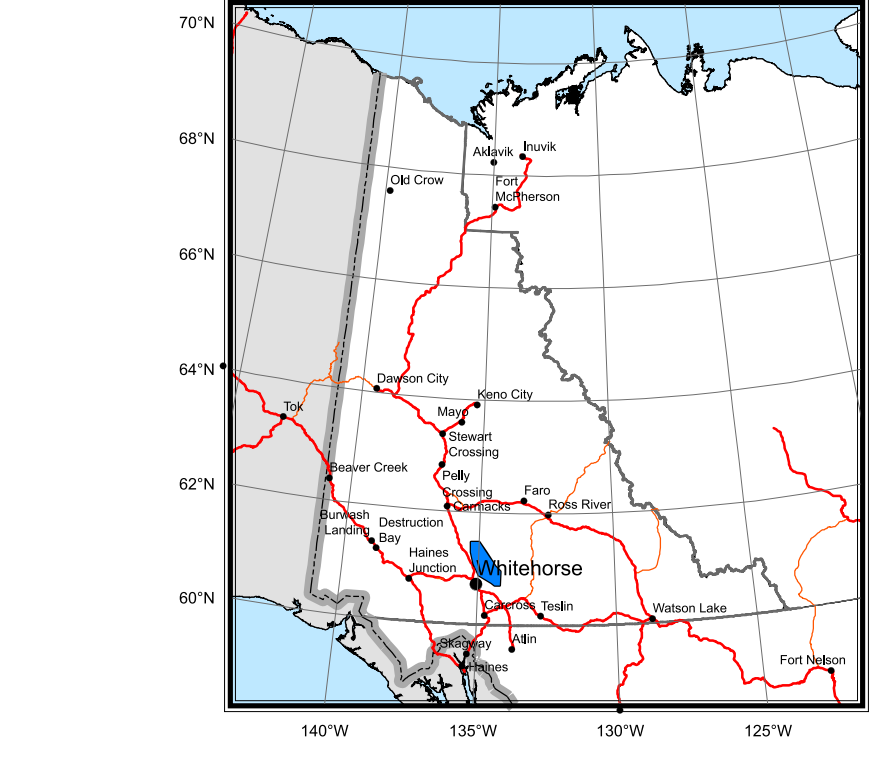
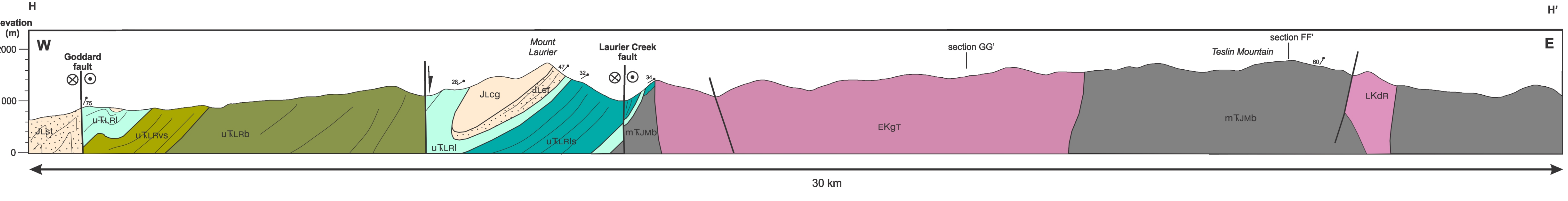
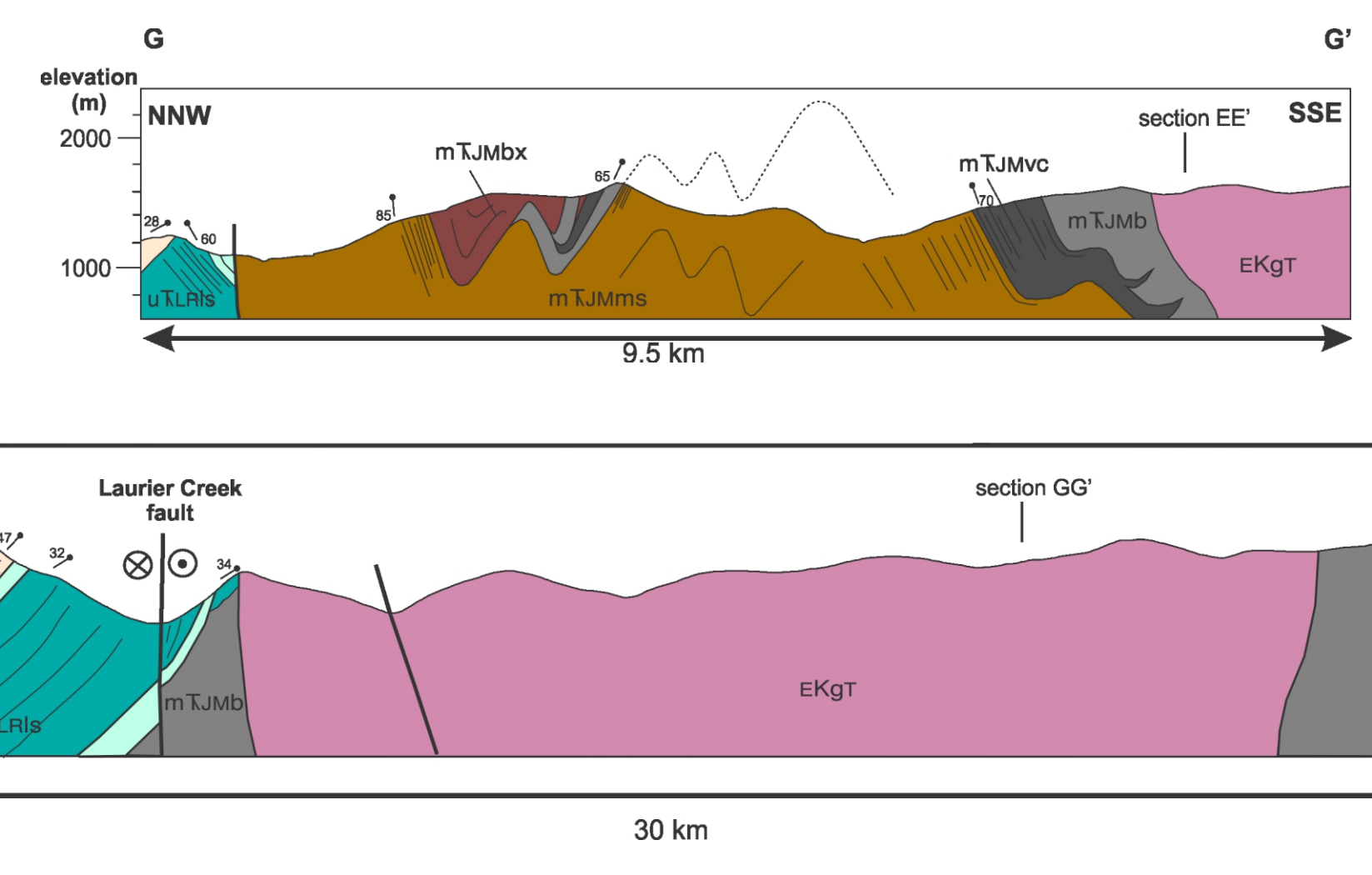
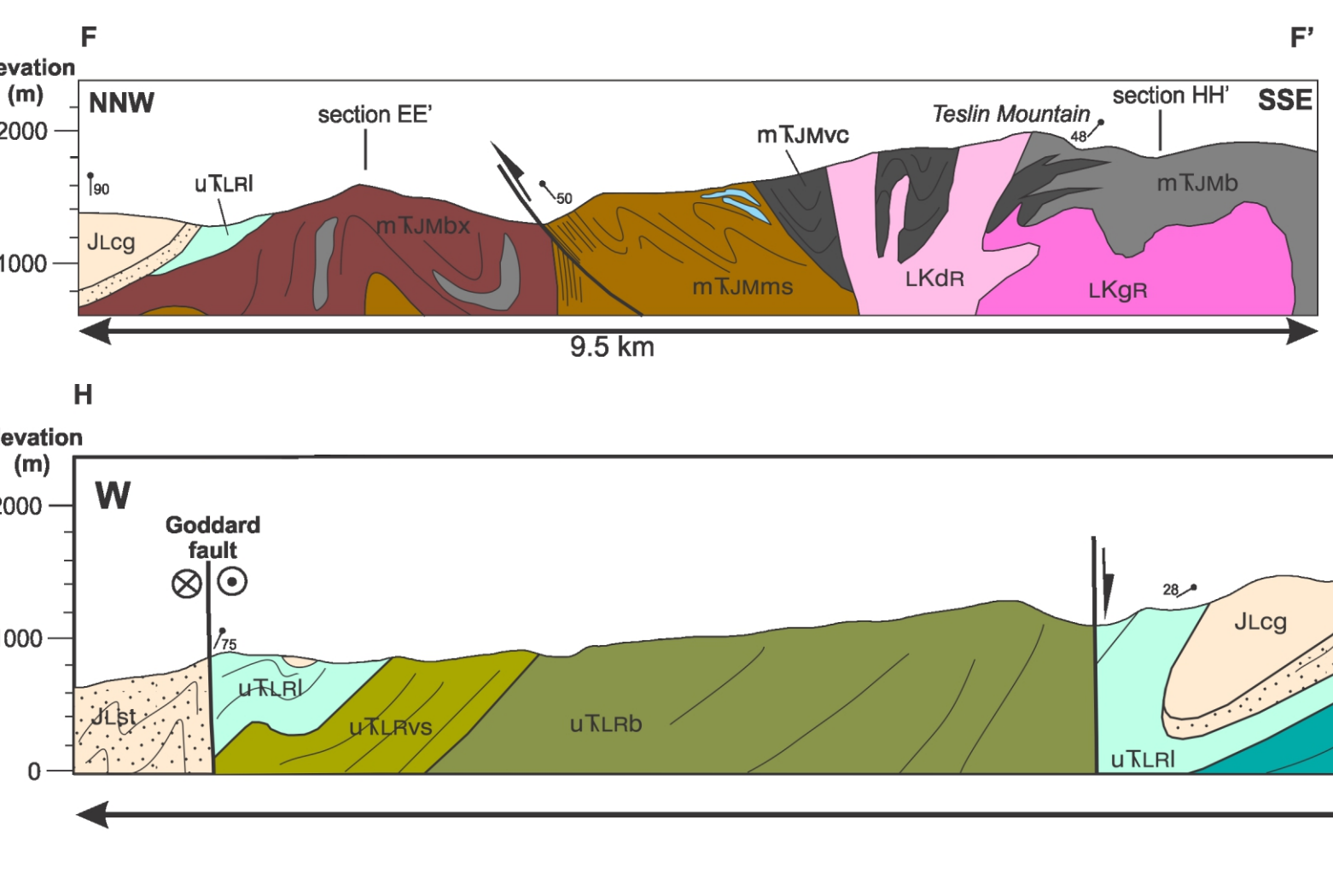
Legend is as appears on sheet 1.

Most contacts are mapped or inferred based on field work conducted from 2015 to 2018 by Esther Bordet. Contacts and interpretations for 105D/15 (Joe Mountain area) and 105D/16 (Mount McClinton) are after Hart and Hunt (2003a,b). In places, contacts were drawn based on previous interpretations by Tozer (1958), Tempelman-Kluit (1984, 2009), and Colpron (2011).

Comprehensive unit descriptions and interpretation of the geological evolution of the area are presented in Open File report 2019-1 (Bordet et al., 2019), and complement the present map.

Robert Blodgett conducted fossil identification on 16 microfossil collections. Martyn Golding conducted analyses and identification of 25 (5 productive) conodont samples. These fossil collections are detailed in Appendix A1 and A2 of Bordet et al. (2019). Fossil collections from previous studies are compiled in Appendix A3.

Jim Crowley at Boise State University, conducted LA-ICP-MS and CA-TIMS dating on igneous and detrital samples collected in this study. Complete data tables, as well as cathodoluminescence imaging of zircon grains, are available in Appendices B1, B2 and B3 of Bordet (2019). Radiometric ages compiled from previous studies are in Appendix B4.



1:50 000-scale topographic base data provided by CENTRE FOR TOPOGRAPHIC INFORMATION, NATURAL RESOURCES CANADA. Copyright for Ministry des Resources, Yukon Geological Survey.

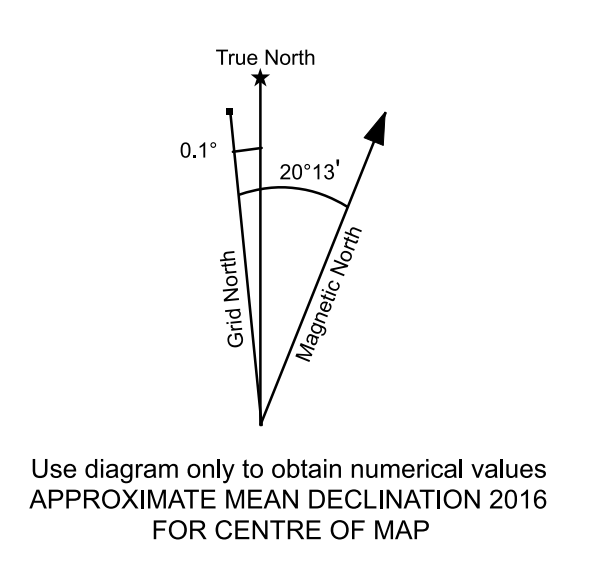
3D matrix shaded relief from GEOMATICS YUKON, www.geomatics.gov.yk.ca

ONE THOUSAND METRE GRID  
Universal Transverse Mercator Projection  
North American Datum 1983  
Zone 8

**BEDROCK GEOLOGY**  
**PARTS OF TESLIN MOUNTAIN, LAKE LABERGE**  
**JOE MOUNTAIN AND MOUNT MCCLINTOCK**  
**YUKON**

SCALE 1:50 000

CONTOUR INTERVAL 20 METRES OR 200 FEET  
Elevations in metres/feet above Mean Sea Level



105E/6 LOWER LABERGE	105E/7 TESLIN MOUNTAIN	105F/8 LIVINGSTONE CREEK
105E/3 LAKE LABERGE	105E/2 TESLIN MOUNTAIN	105E/1 BOSWELL MOUNTAIN
105D/14 UPPER LABERGE	105D/15 JOE MOUNTAIN	105D/16 MOUNT MCCLINTOCK