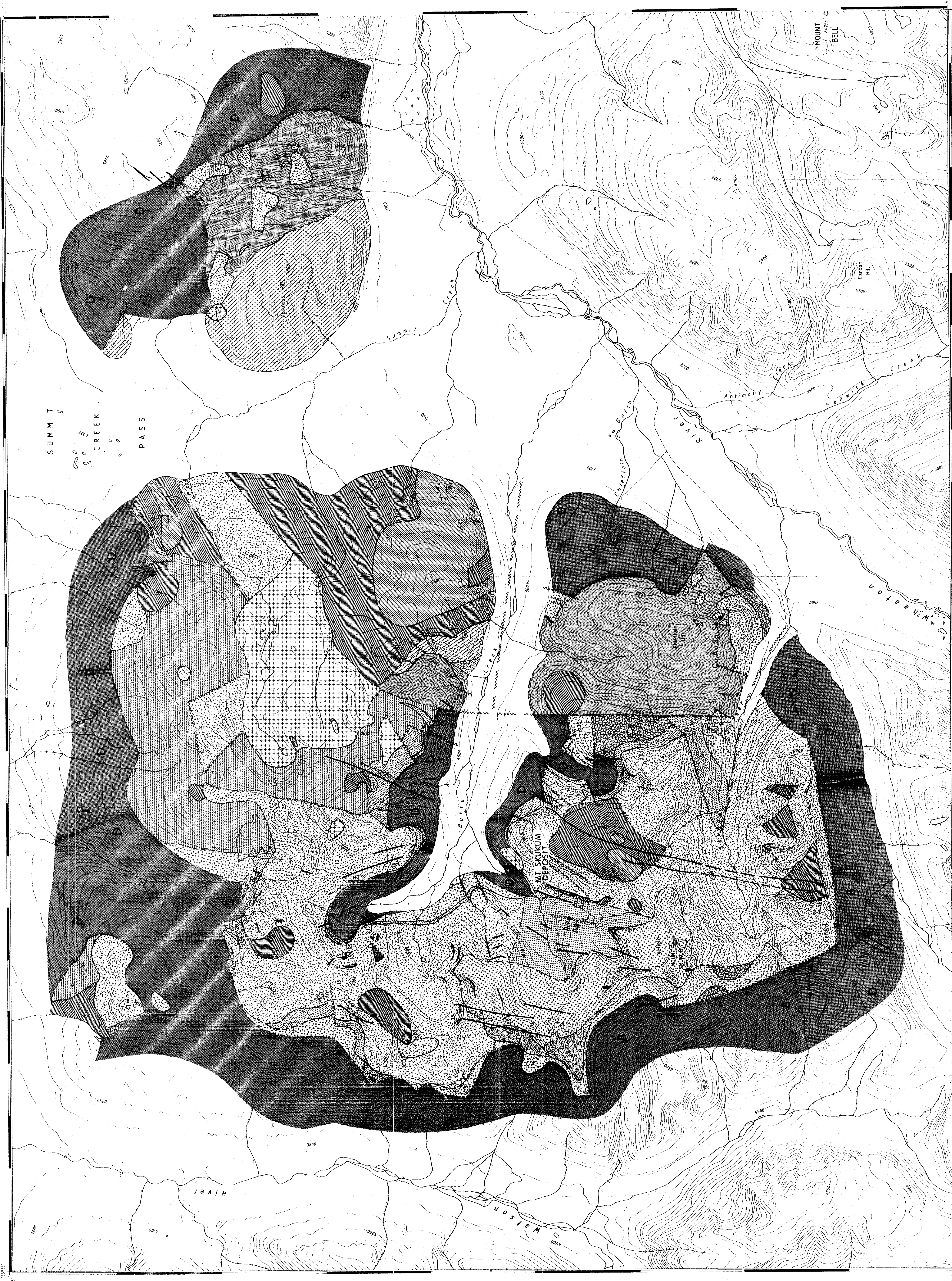


PRELIMINARY GEOLOGICAL MAP OF THE
 MOUNT SKUKUM VOLCANIC COMPLEX



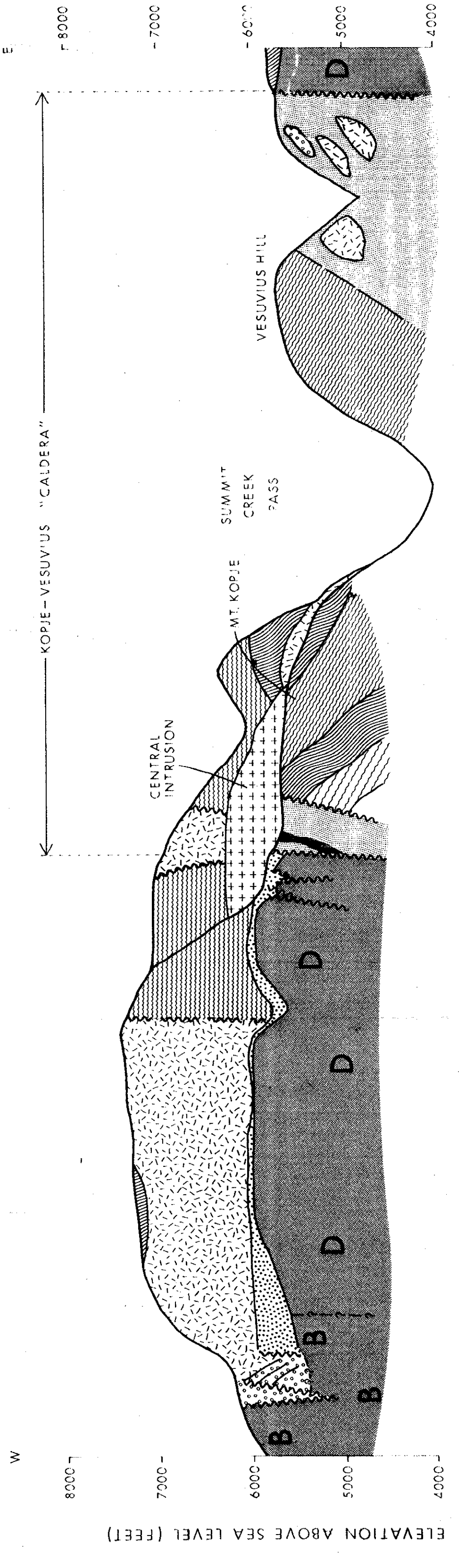
LEGEND

- EARLY TERTIARY**
- Basaltic siltstone
 - Basic to intermediate dykes
- FORMATION 5**
- Intermediate monolithic breccia
 - Intermediate lava flows and associated lapilli tuff
 - Epithermal breccia
- FORMATION 4**
- Altered felsic volcanic rocks
 - Felsic lapilli tuff and tuff (interpreted as mostly welded pyroclastic flow)
 - Felsic flow banded, subvolcanic and brecciated lava flows and structures (?)
 - Layered felsic volcaniclastic rocks
- FORMATION 3**
- Inter-layered epiclastic rocks and intermediate lava flows
- FORMATION 2**
- Lapilli tuff, tuff and epiclastic rocks, generally mostly pyroclastic flows which may be equivalent to the felsic welded pyroclastic flow marker horizon
 - Inter-layered tuff and lapilli tuff, epiclastic rocks and lava flows, includes a felsic welded pyroclastic flow marker horizon
 - Inter-layered primary felsic volcanics, epiclastic rocks and minor lava flows
- FORMATION 1**
- Volcanic conglomerate, minor sandstone and siltstone

- CRETACEOUS**
- COAST INTRUSIONS
 - D Granite rocks
- LOWER JURASSIC AND LATER LABERGE GROUP**
- C Mainly conglomerate
- PROTEROZOIC (?) OR LATER YUKON GROUP**
- B Metasedimentary rocks
- UNKNOWN AGE VOLCANIC ROCKS OF UNKNOWN AGE**
- A Metavolcanic rocks
- SYMBOLS**
- Joint, and fracture patterns and inferred
 - Lineation
 - Bedding
 - Faults
 - Approximate 'fault' location
 - Adit
 - Area of mineral occurrence
 - St. Anthony, Zn, Pb, Ag, Cu, Zn, Fe, Cu-Copper

Geology by M. J. Prude, 1982, 1983 and 1984
 It is recommended that references to this report be made in the following form:
 Prude, M. J., 1985, Preliminary Geological Map Of The Mount Skukum Volcanic Complex, 1:25,000 - 2, 3, 4, 5, Exploration and Geological Services Division, Yukon, Indian and Northern Affairs Canada, Open File, 1:25,000 scale map.

AN INTERPRETIVE EAST WEST CROSS SECTION OF THE
 MOUNT SKUKUM VOLCANIC COMPLEX



SCALE: 1:25,000
 METERS