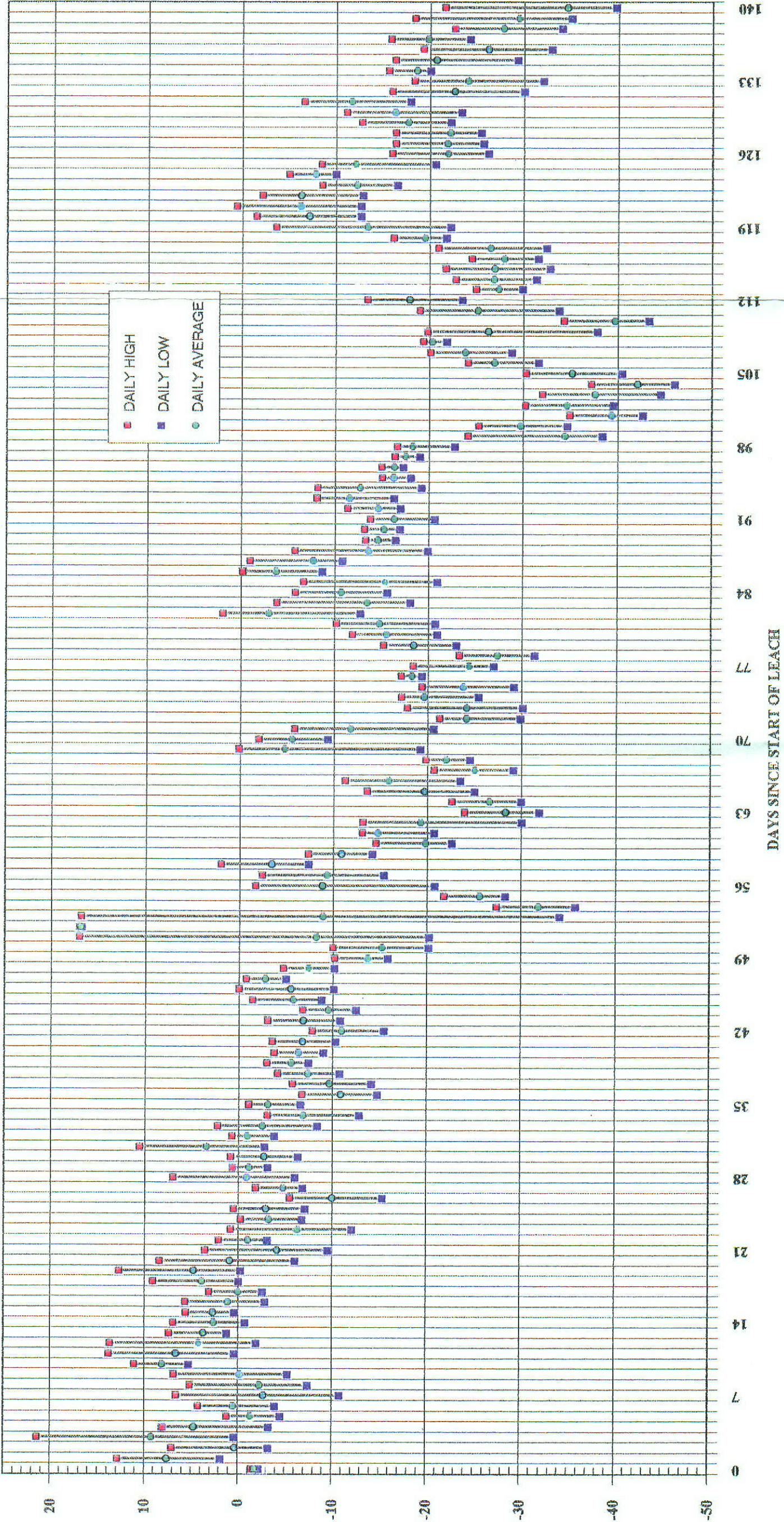


OF 1996-1T

AMBIENT DAILY HIGH, LOW, AND AVERAGE TEMPERATURES

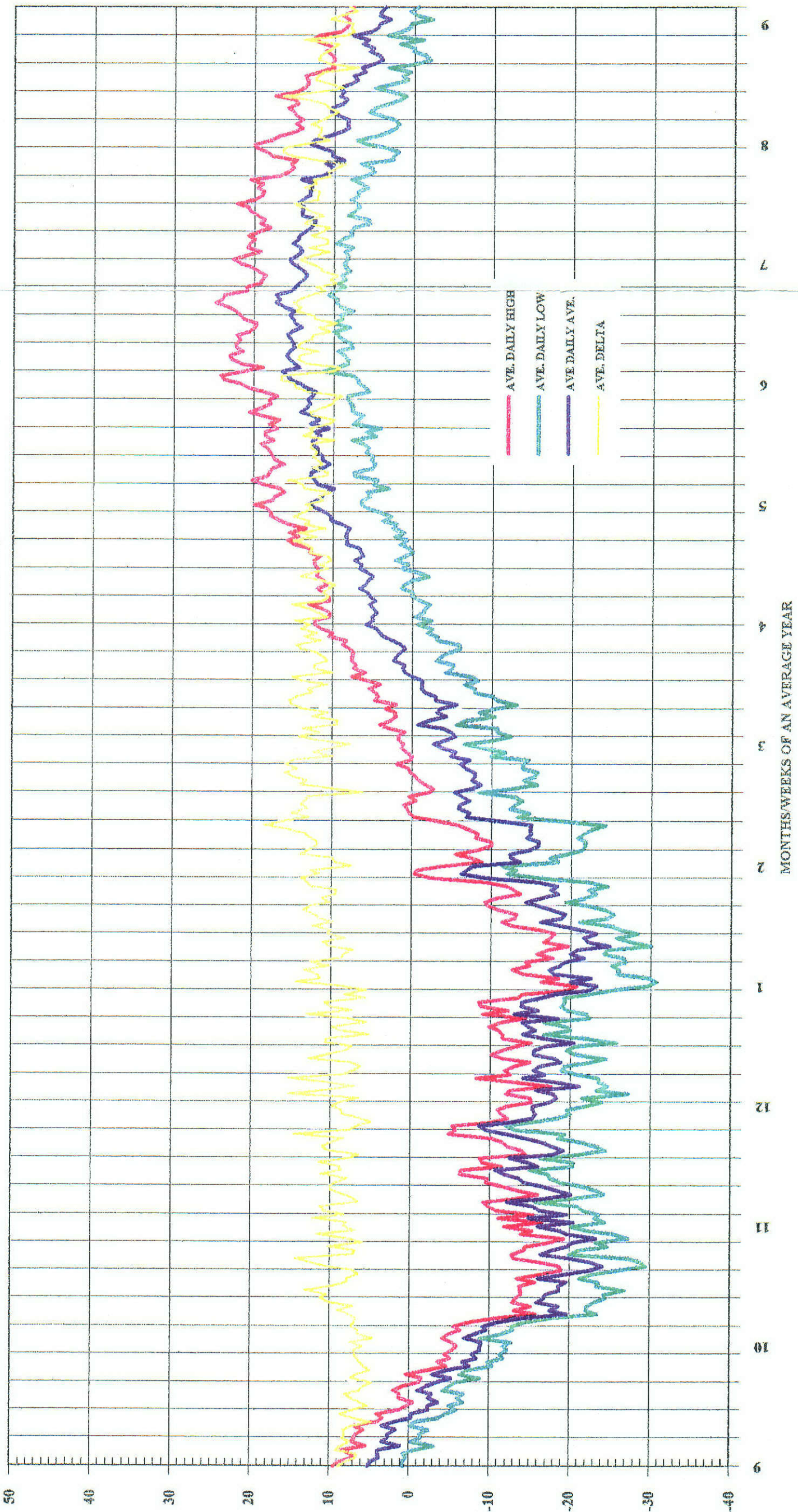
TEMPERATURES ARE FROM SENSOR B4 @26' CENTERLINE OF HEAP



OF 1996-17

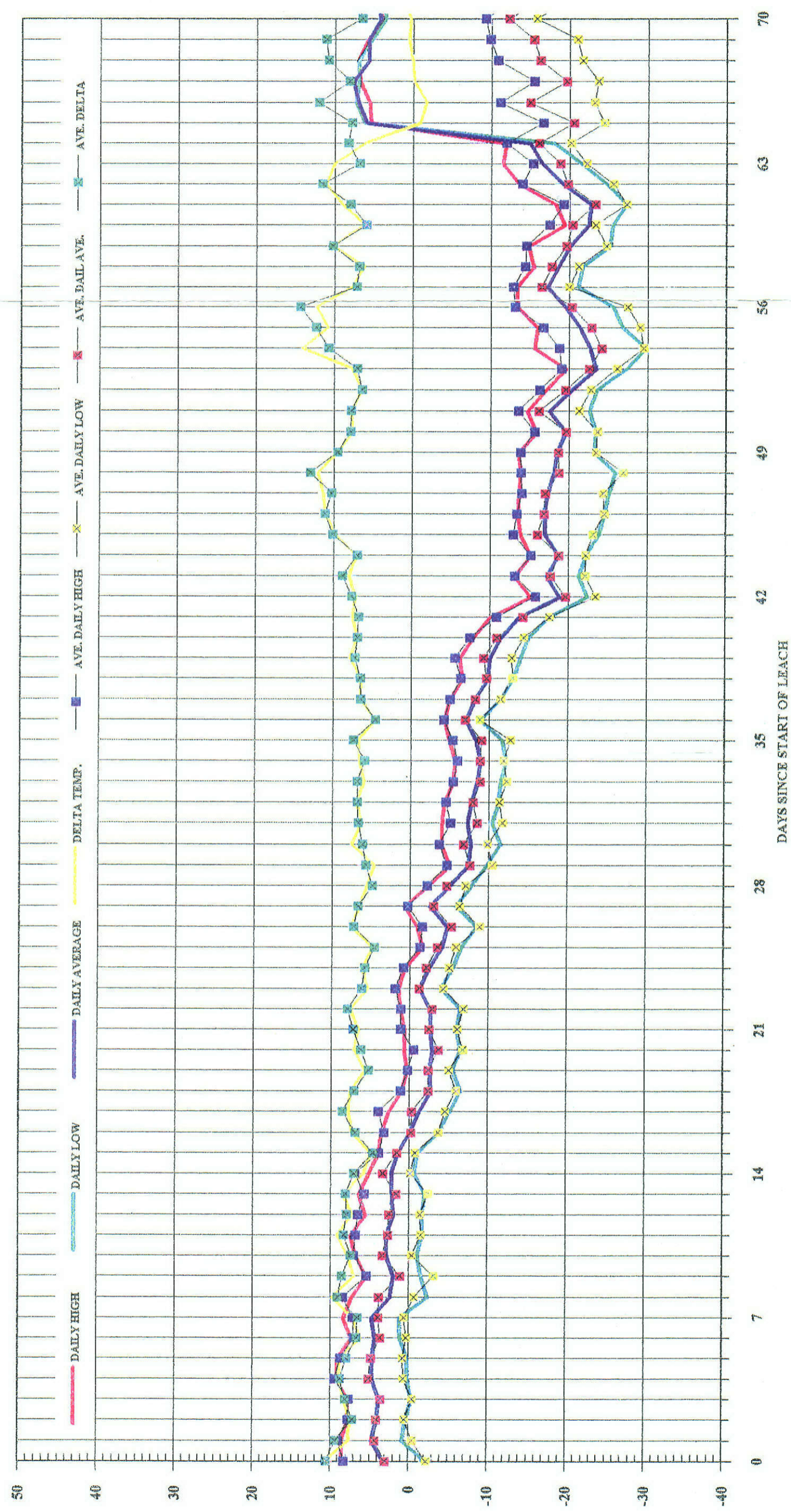
AMBIENT DAILY HIGH, LOW, AND AVERAGE TEMPERATURES FOR 1985-1990

NOTE: ABSCISSA BEGINS IN THE NINETH MONTH



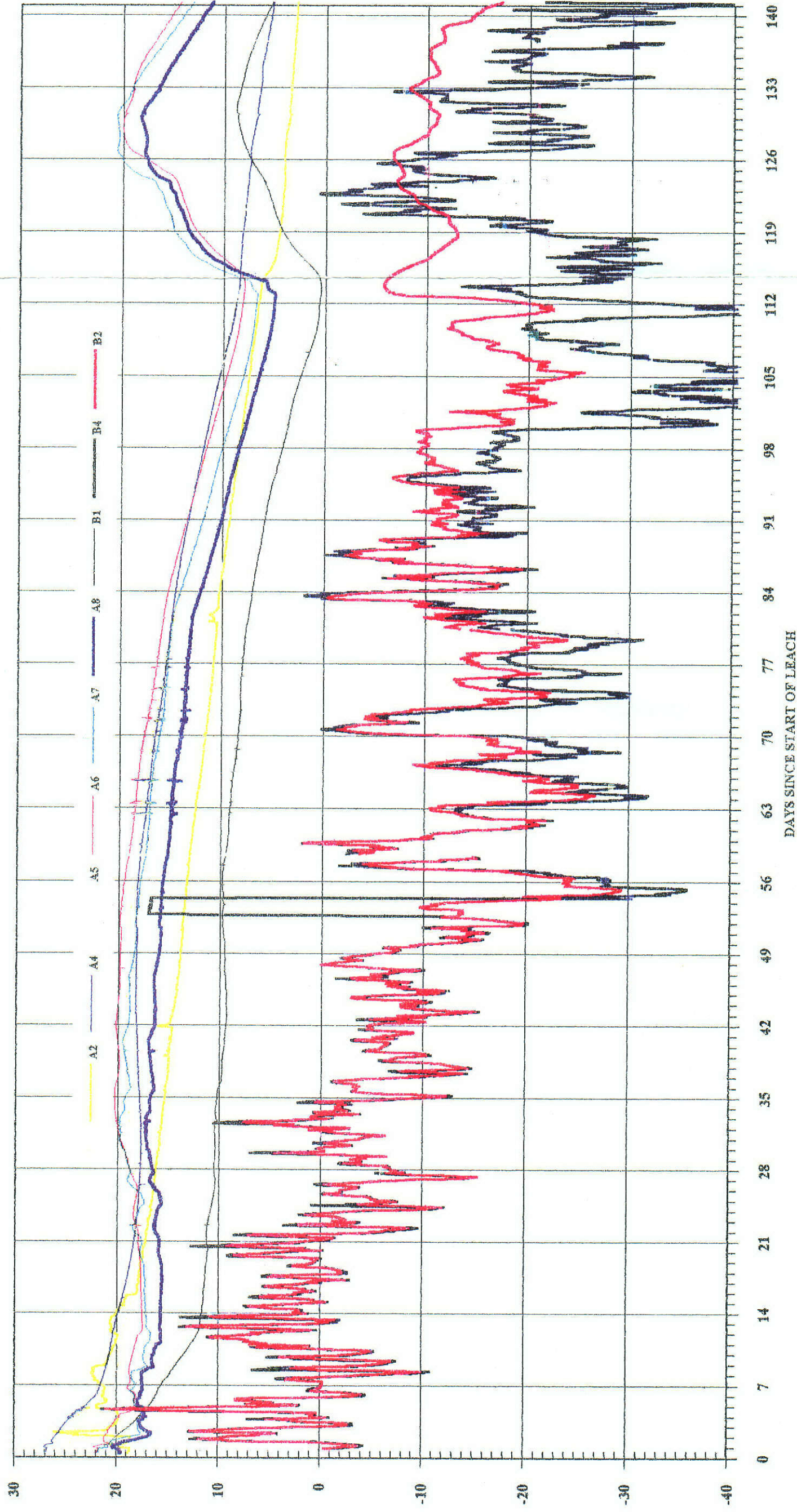
OF 1996-17

COMPARISON OF TEST AMBIENT TEMPERATURES TO AVERAGE AMBIENT TEMPERATURES FOR 1985 - 1990



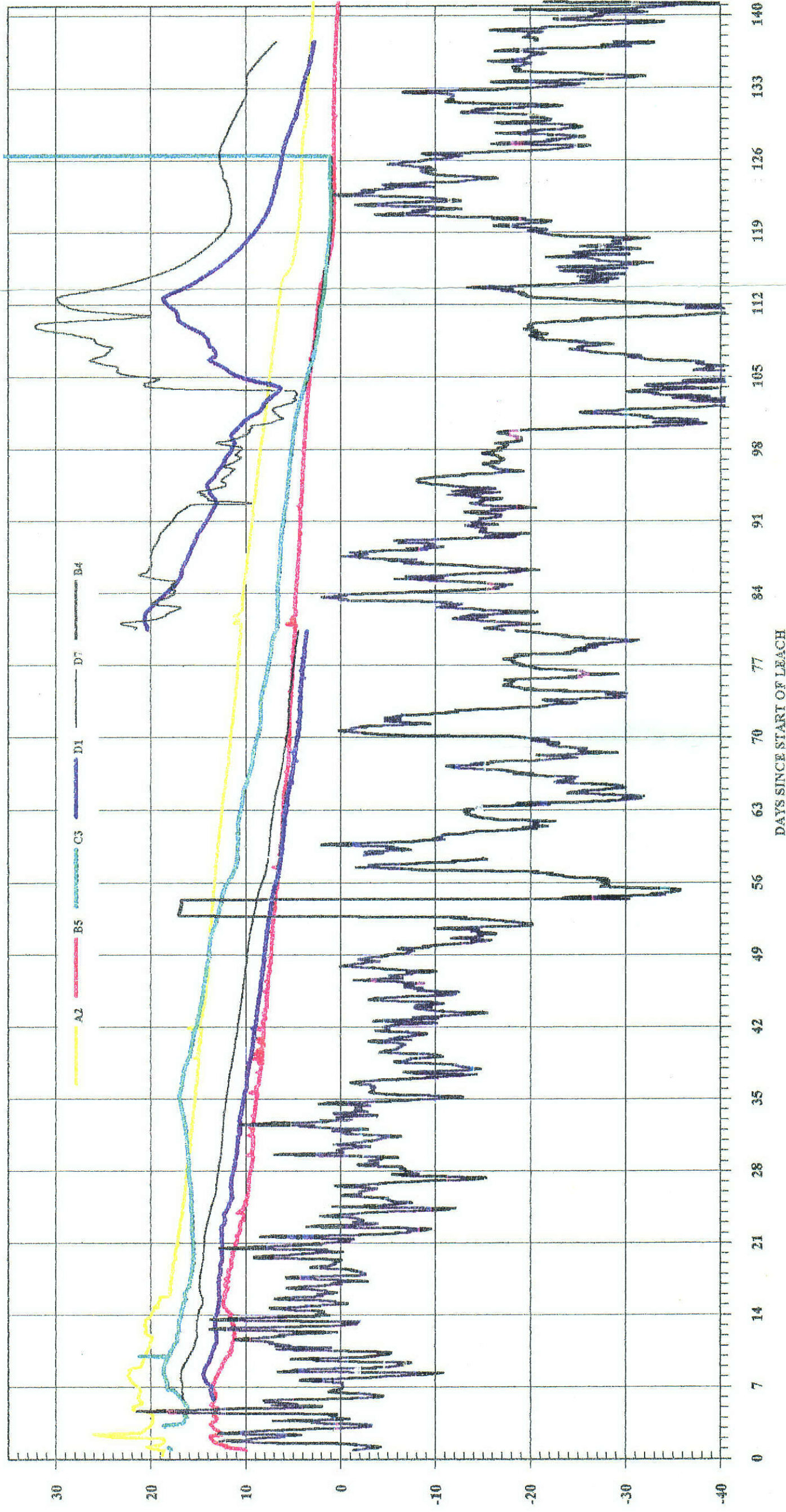
OF 1996-1T

CENTERLINE TEMPERATURE PROFILE



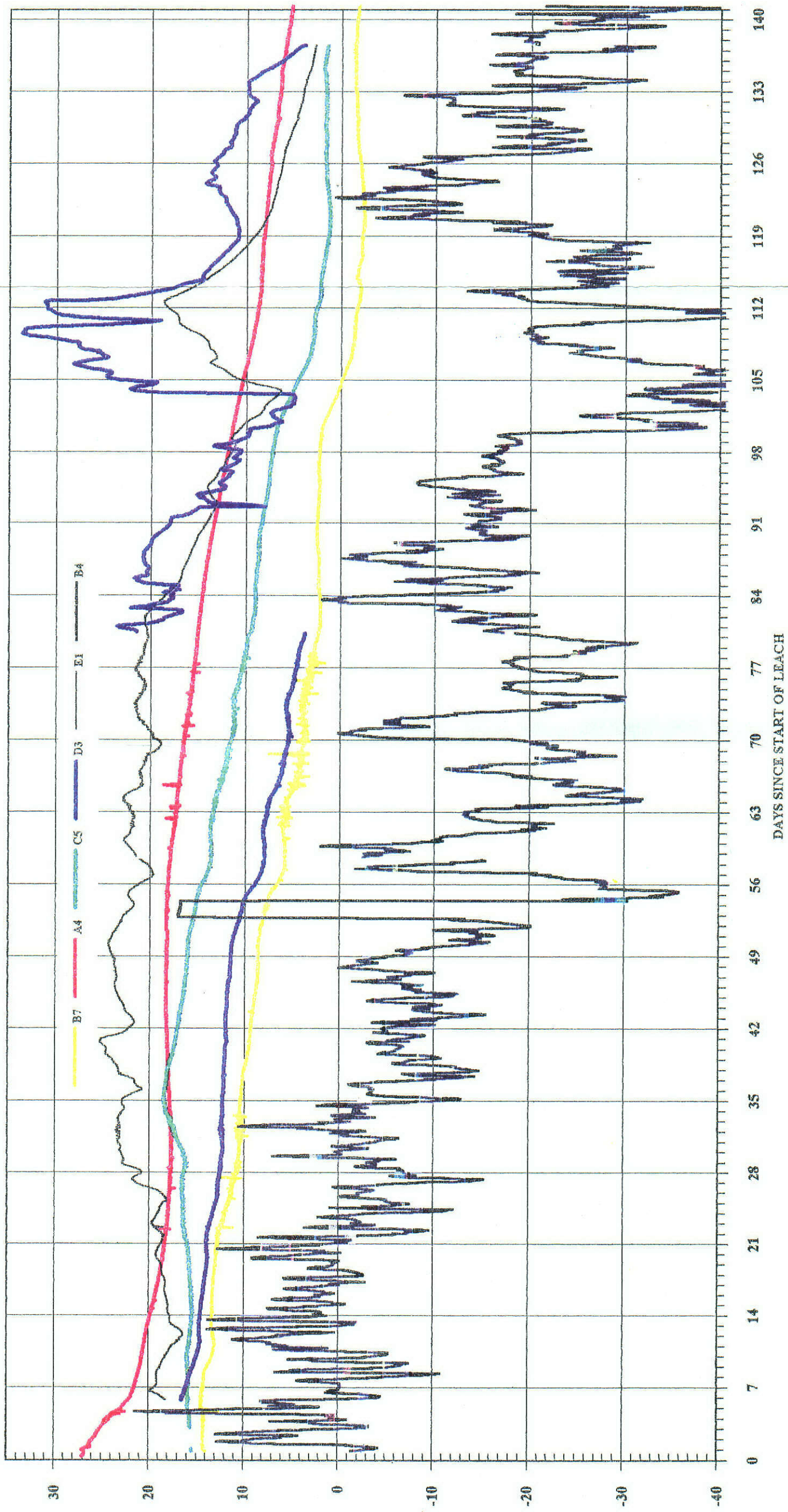
OF 1996-17

LATERAL TEMPERATURE PROFILE @+0.5FT



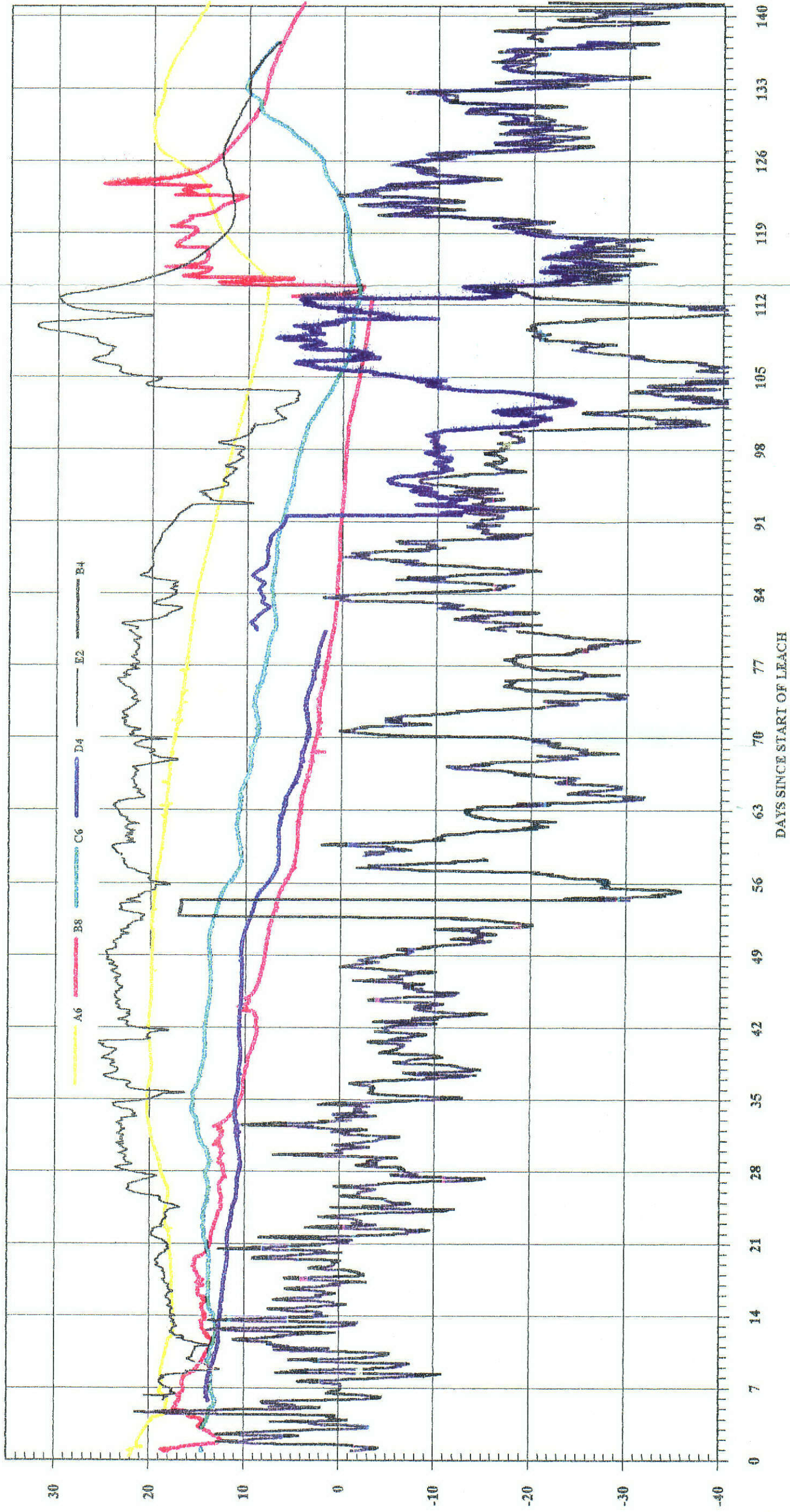
OF 1996-17

LATERAL TEMPERATURE PROFILE @+10.0FT



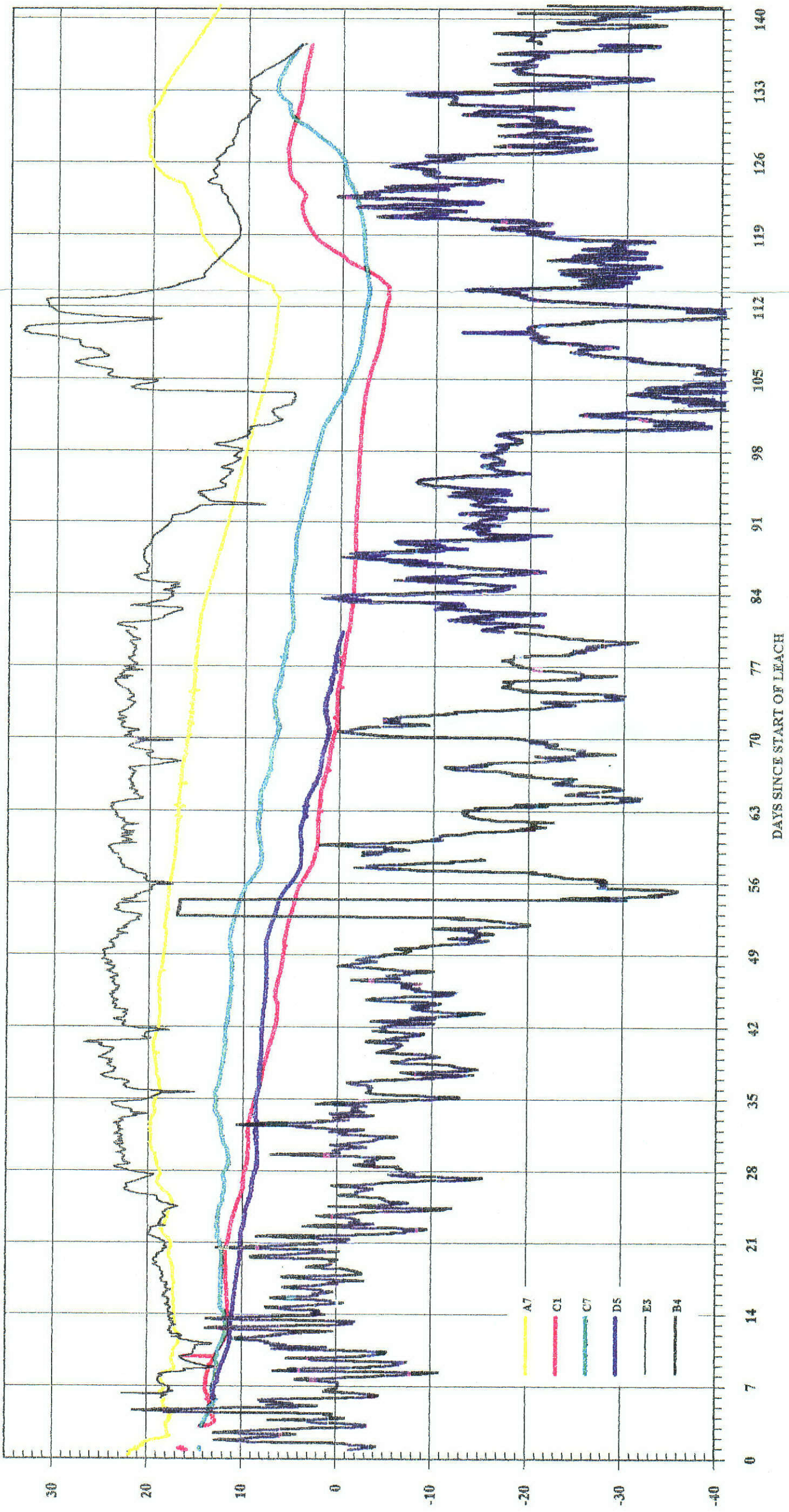
OF 1996-1T

LATERAL TEMPERATURE PROFILE @+18.0FT



OF 1996-17

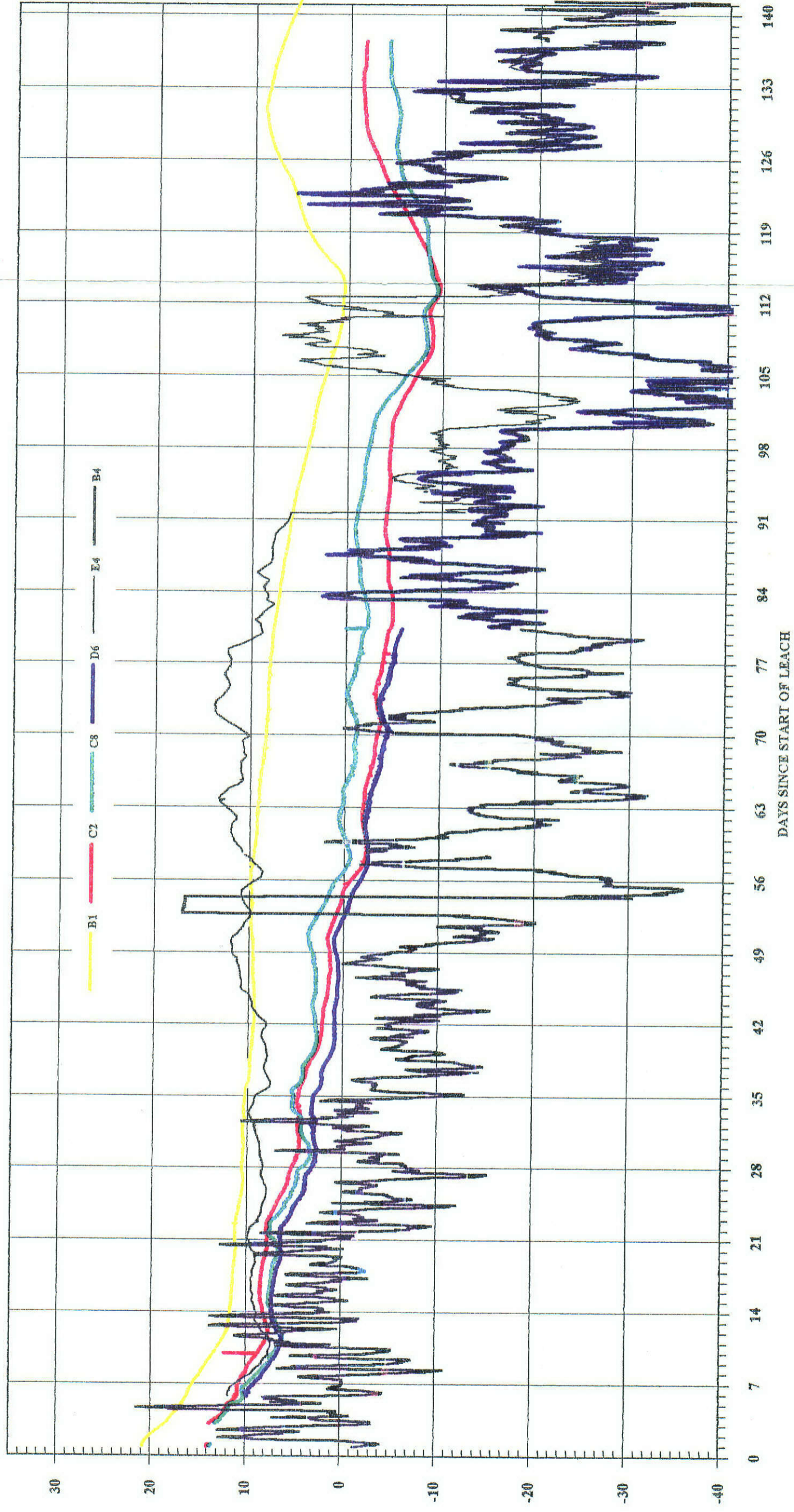
LATERAL TEMPERATURE PROFILE @+19.0FT





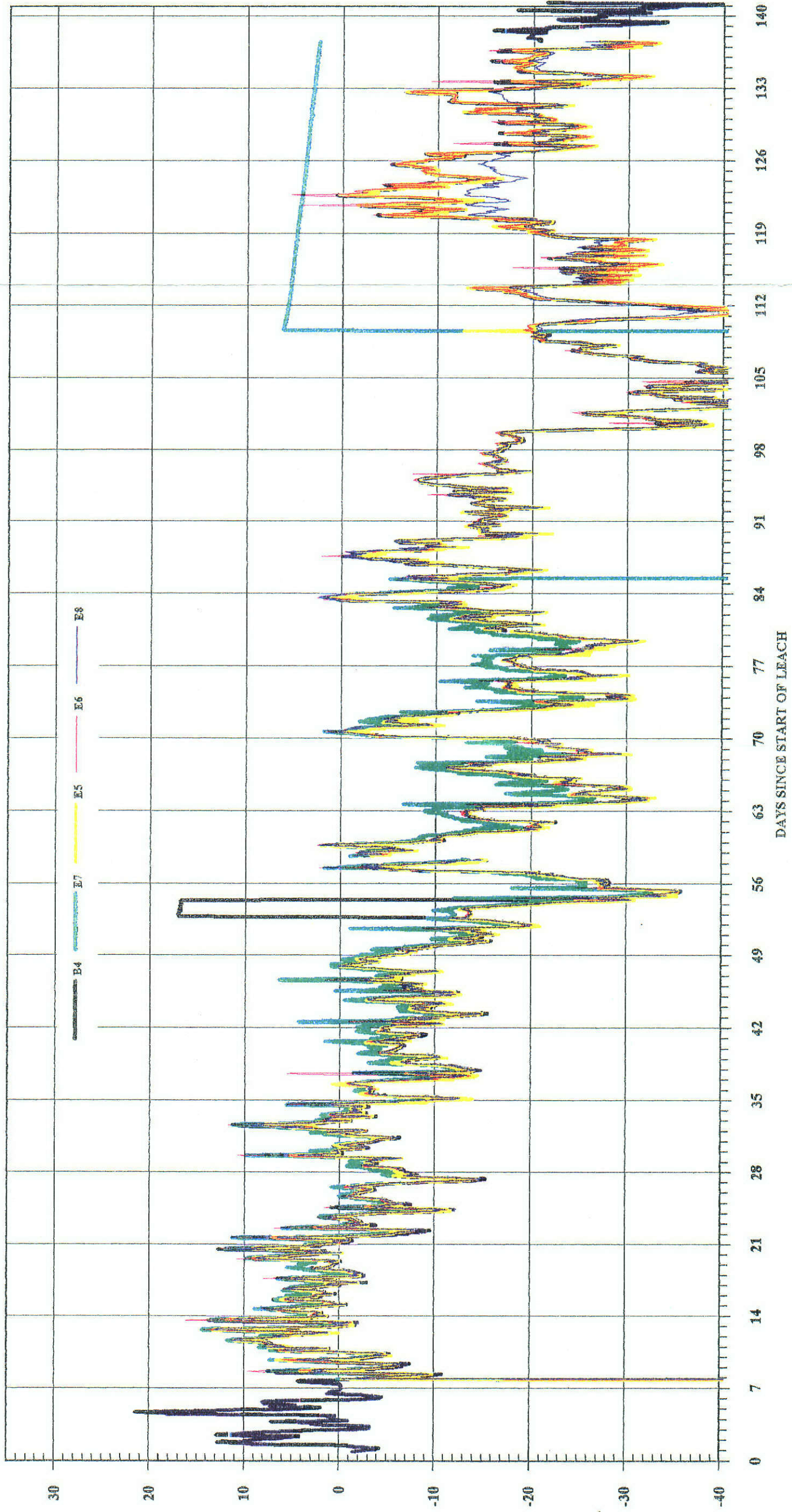
OF 1996-17

LATERAL TEMPERATURE PROFILE @+21.5FT



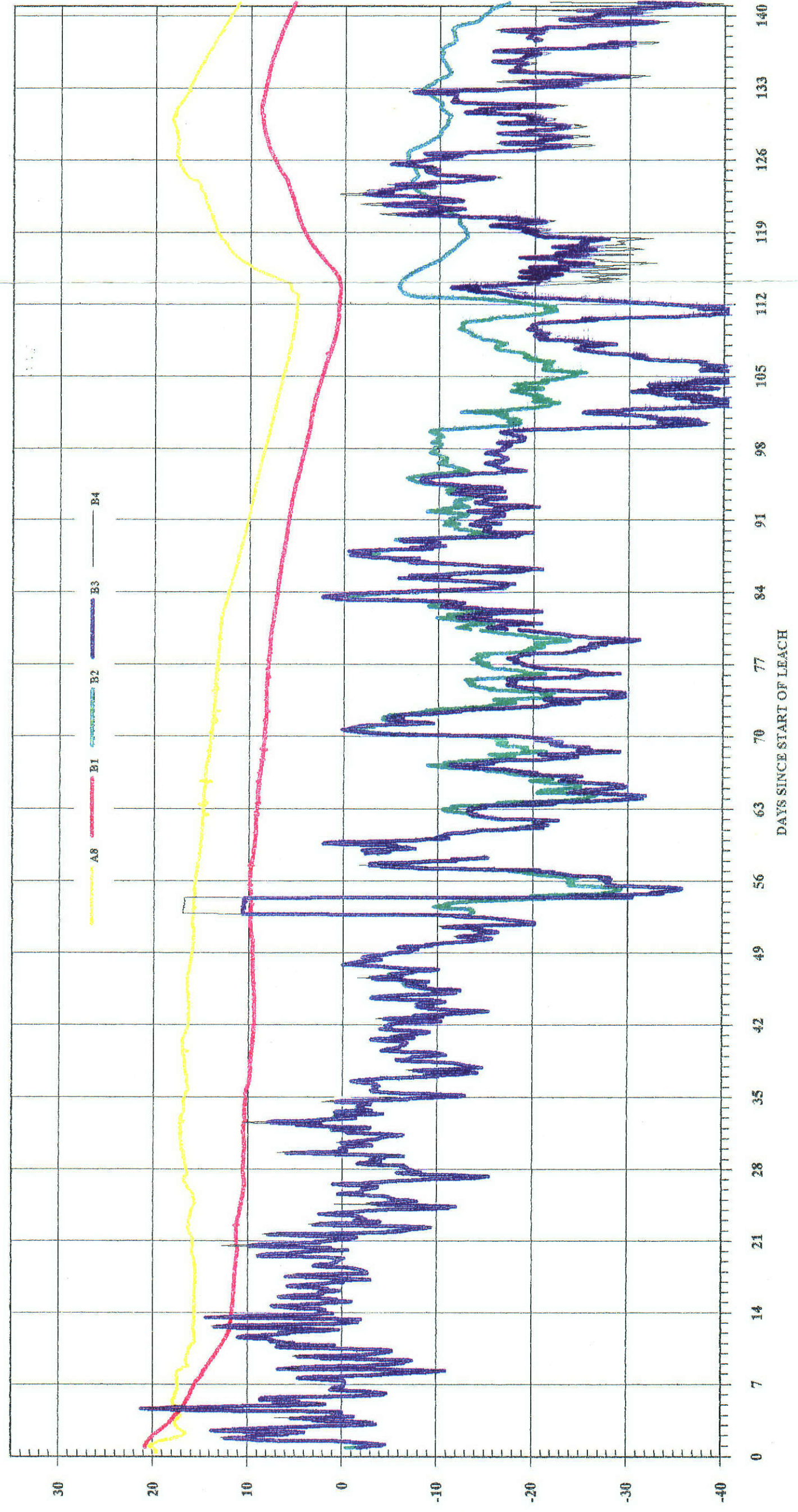
OF 1996-17

COMPARISON OF AMBIENT TEMPERATURE SENSORS



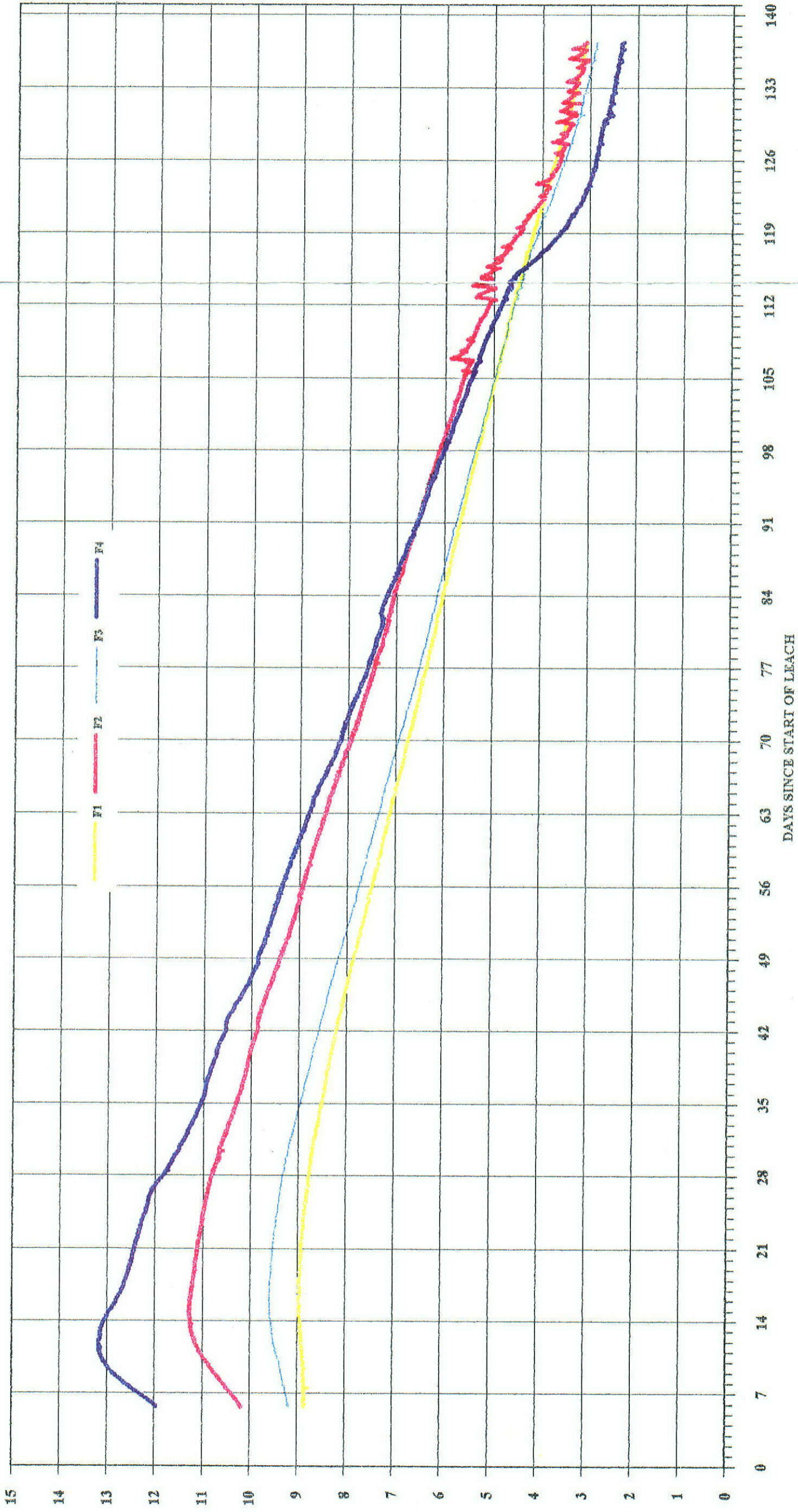
OF 1996-1T

COMPARISON OF TEMPERATURES OF THE TOP FOUR LAYERS



OF 1996-1T

CENTERLINE BELOW GROUND TEMPERATURE PROFILE



OF 1996-17

NORTH BELOW GROUND TEMPERATURE PROFILE

