

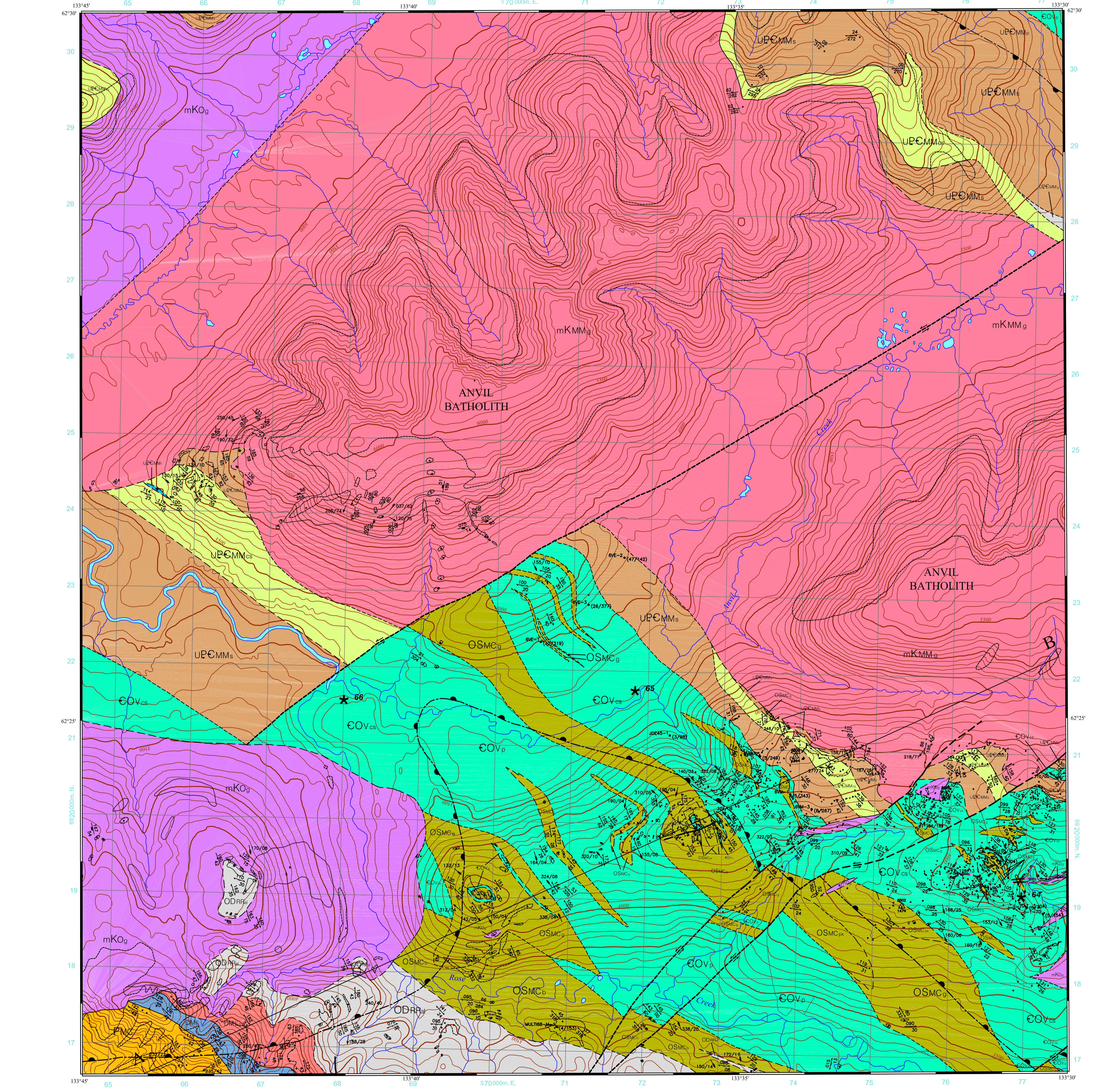
LEGEND. TERTIARY: Tuff. CRETACEOUS: ANVIL PLUTONIC SUITE (mKU, mKM, mKO, mKMM), TRIASSIC (K, Ksp), PALEOZOIC: YUKON-TANANA COMPLEX (PY, PYi, PYg, PZ), PERMIAN: ANVIL RANGE GROUP (PAR), PENNSYLVANIAN: MOUNT CHRISTIE FORMATION (PMC), DEVONIAN-PENNSYLVANIAN: UNDIVIDED MOUNT CHRISTIE FORMATION AND EARN GROUP (DP), DEVONIAN-MISSISSIPPIAN: EARN GROUP (DME, DMEi, DMEs), ORDOVICIAN-DEVONIAN: UNDIVIDED ROAD RIVER GROUP (ODRR), QUARTZ ARENITE AND DOLOSTONE (OD), ORDOVICIAN-SILURIAN: ROAD RIVER GROUP STEEL FORMATION (SS), DUO LAKE FORMATION (OSDL), MENZIE CREEK FORMATION (OSM), CAMBRIAN-ORDOVICIAN: VANGORDA FORMATION (COV), UPPER PROTEROZOIC-CAMBRIAN: MOUNT MYE FORMATION (UECM).

MINERAL OCCURRENCES Yukon MINFILE (1997). Table with columns for file number (105K 64-70), star symbol, name (LORNA, CROWN, LEON, MARY), and status (Exploration Target).

- REFERENCES. List of 15 geological and geophysical reports and maps, including works by Chisholm (1976), Foster (1977), Gendy (1994), Gendy and Ingh (1987), House (1970), Jennings (1978), Jennings et al. (1978), Piggage (1997), Piggage et al. (1997), Rees (1989), Terpenhuyzen (1972), Woolham (1996), and Yukon Minfile (1997).

RECOMMENDED CITATION. Piggage, Lee, C., 2000. Geological map of Rose Mountain (NTS 105K/5 NE), central Yukon (1:25 000 scale). Exploration and Geological Services Division, Yukon, Indian and Northern Affairs Canada, Open File 2000-13.

- DESCRIPTIONS for geological units: DME (Dark grey to black, noncalcareous, siliceous argillite and bedded chert), DMEi (Silvery cream, tan-weathering bedded phyllitic chert), DMEs (Pale green, noncalcareous argillite and bedded chert), OD (Massive, medium-grained quartz arenite), SS (Tan to orange-weathering, siliceous, bioturbated siltstone), OSDL (Dark grey to black, graphitic argillite), OSM (Undivided dark grey green, foliated basalt), COV (Soft, silvery grey, calcareous phyllite), UECEM (Brownish grey, noncalcareous, pervasively foliated phyllite), UECMI (Brownish grey, noncalcareous, pervasively foliated muscovite-biotite schist), UECML (Interbedded pale green calc-silicate and purple-brown biotite phyllite), UECMM (Dark to pale grey, medium crystalline marble), UECMN (Black phyllite to schist).



Map metadata including title '105K/5 NE YUKON TERRITORY SCALE 1:25 000', scale bars in miles and metres, contour interval (100 feet), datum (North American Datum 1983), and a grid diagram showing the map's location within the Yukon Territory grid.

Indian and Northern Affairs Canada, Exploration and Geological Services Division, Yukon Region. Open File 2000-13. Geological Map of Rose Mountain (NTS 105K/5 NE), Central Yukon (1:25 000 scale). compiled by Lee C. Piggage, Yukon Geological Program.