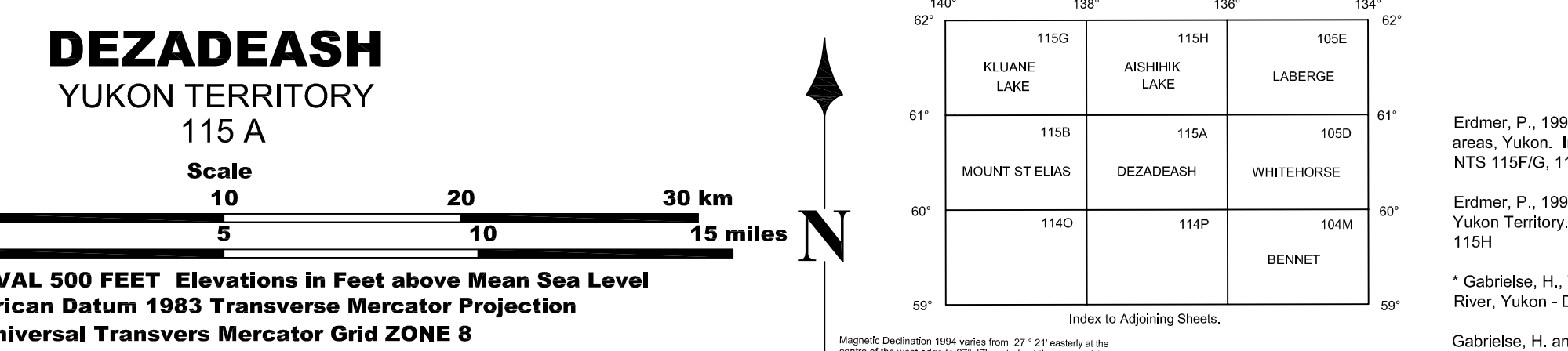
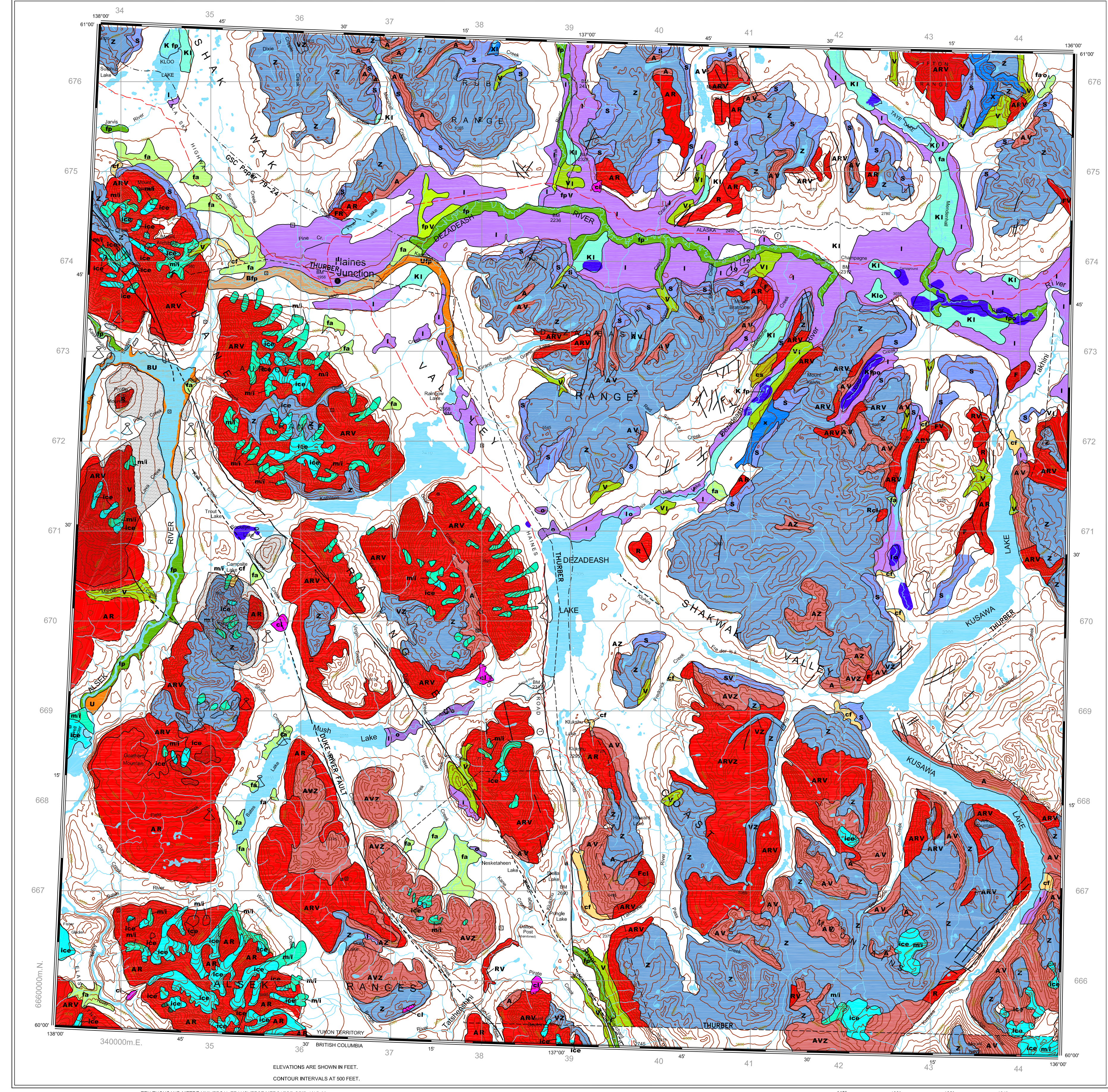


NATIONAL TOPOGRAPHIC SERIES NTDB (1995) D.I.A.N.D. N.A.P. LAND RESOURCES CANADA SHEET 115A



GEOPROCESS FILE - SUMMARY REPORT
DEZAIDEASH MAP AREA - NTS 115A
INTRODUCTION
The GEOPROCESS File is a compilation of information and knowledge on geological processes and terrain hazards...

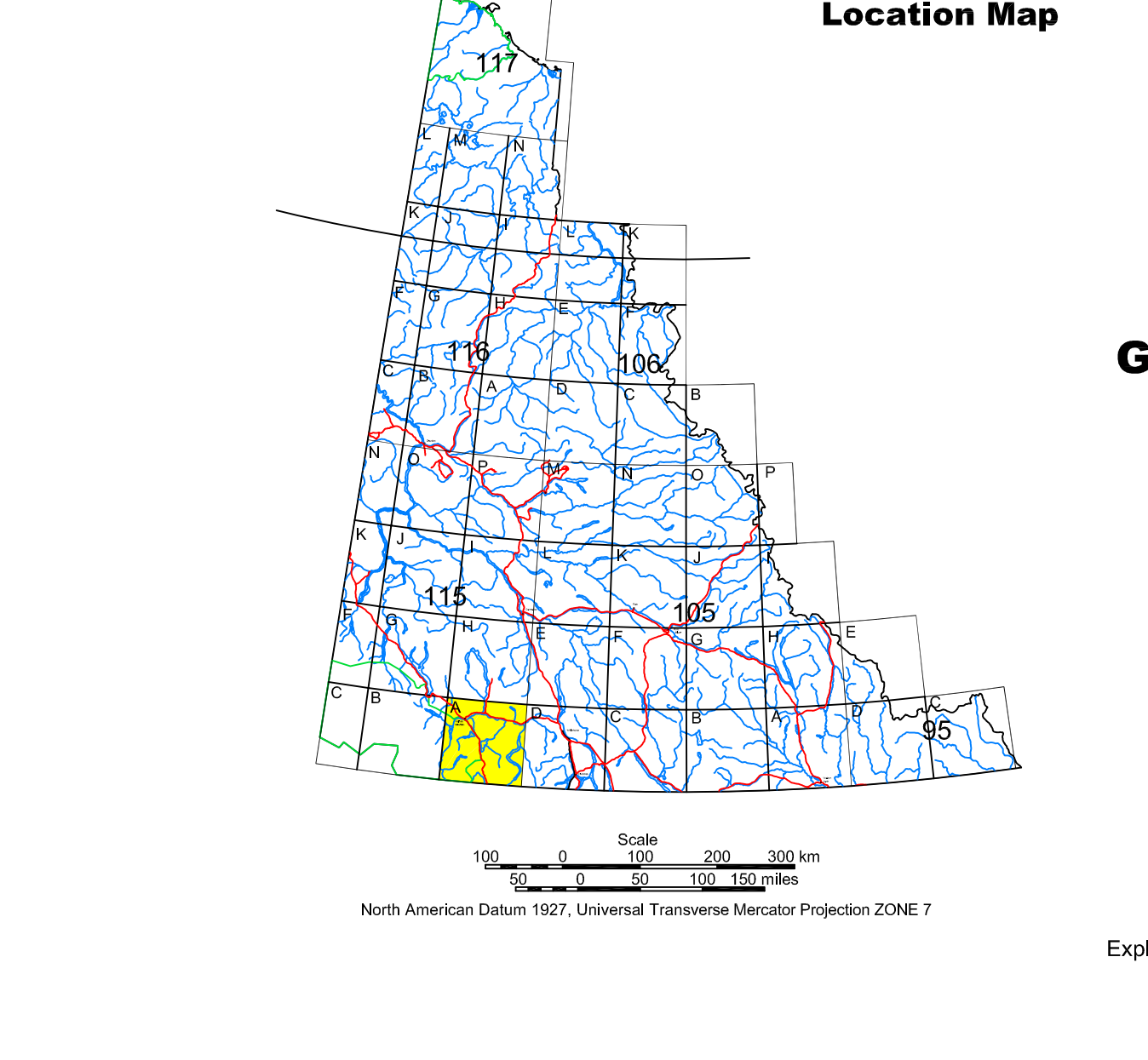
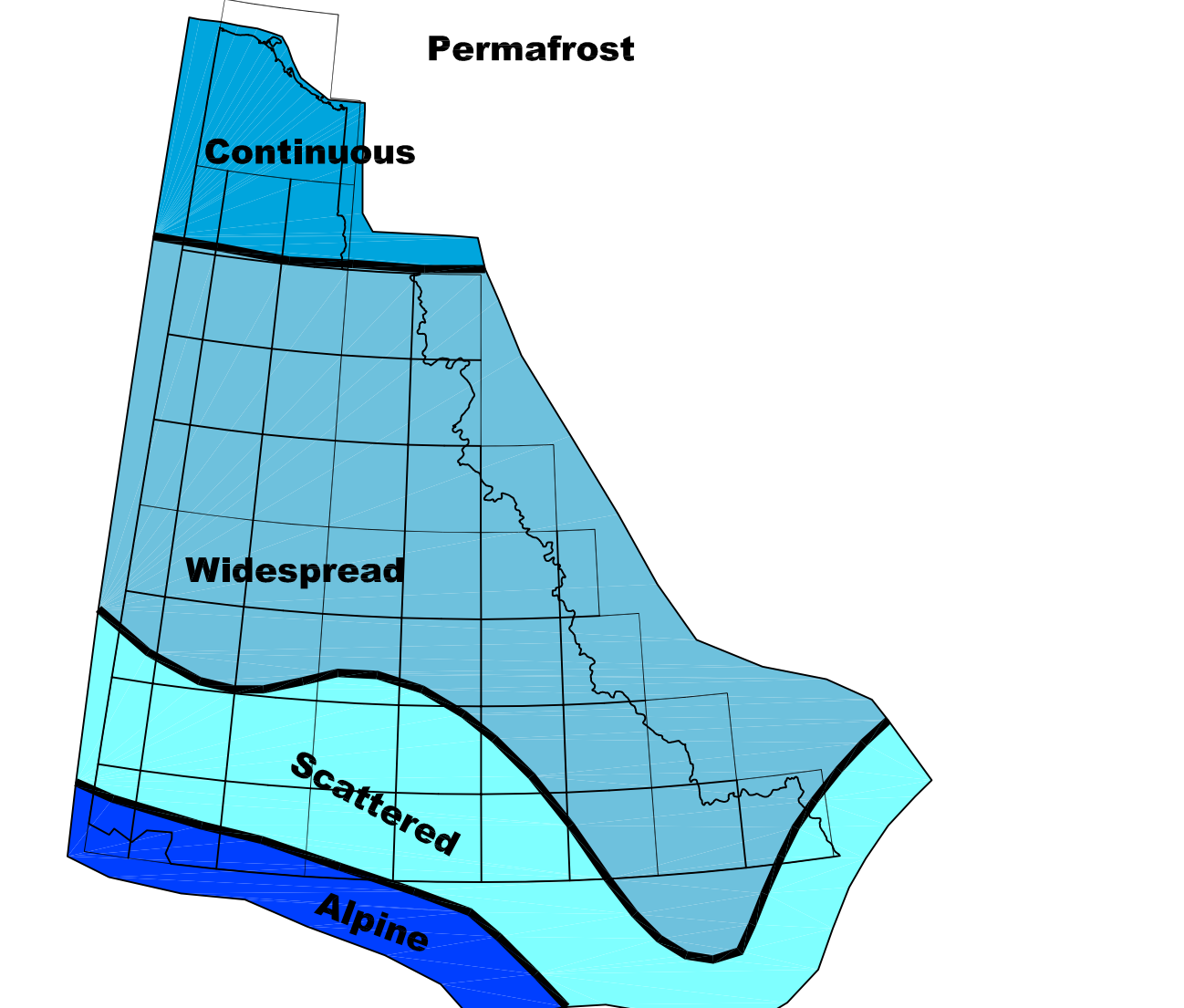
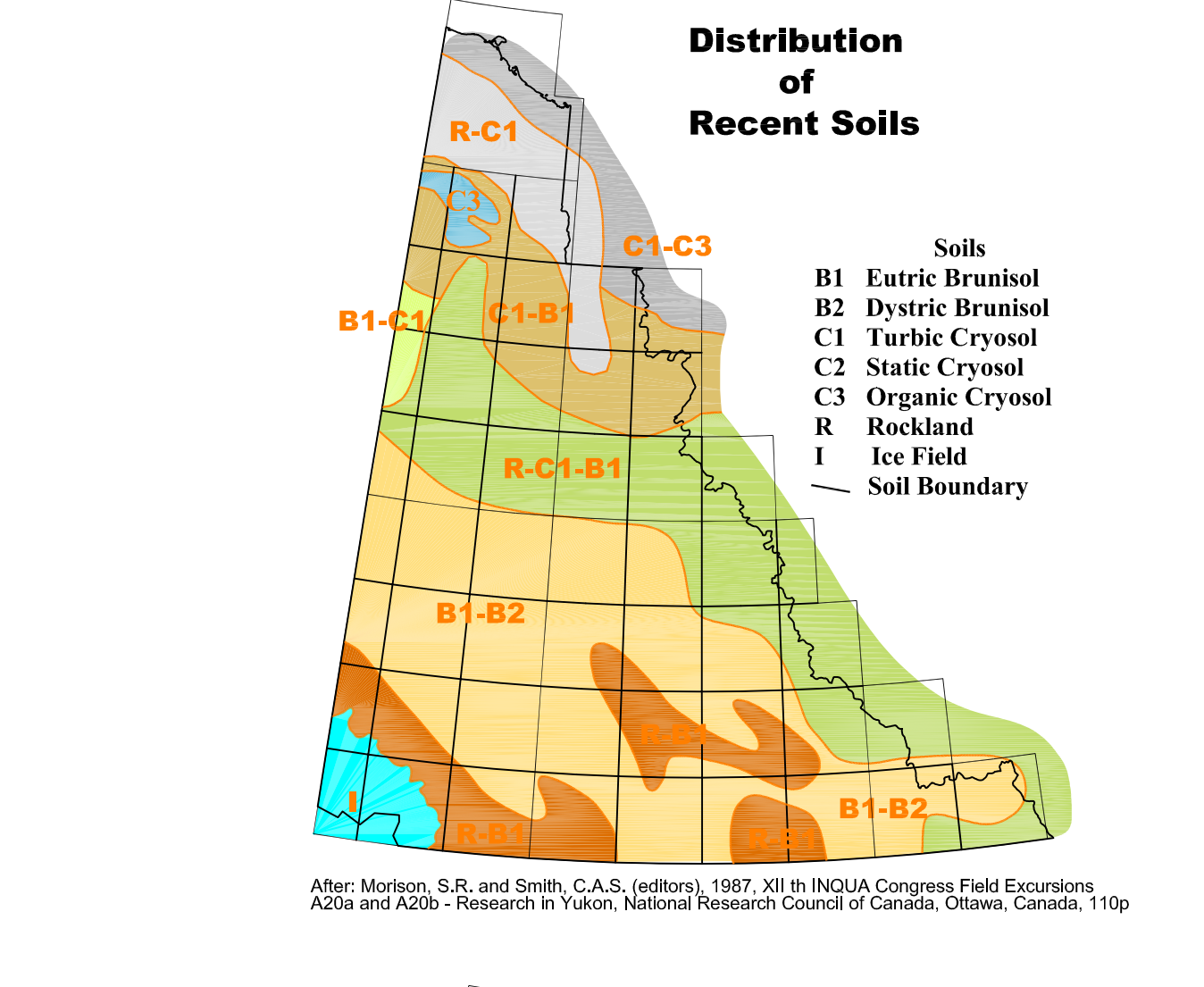
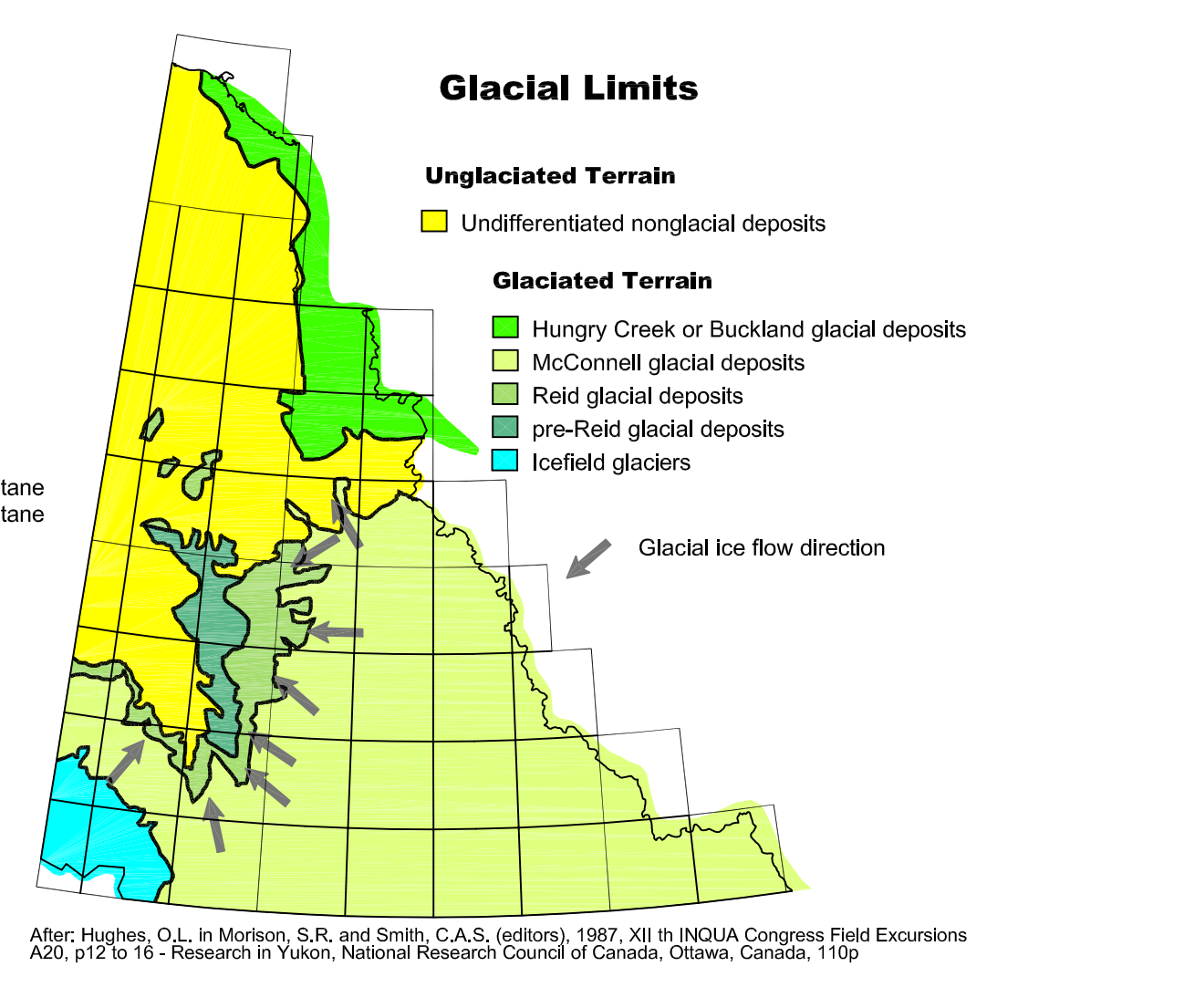
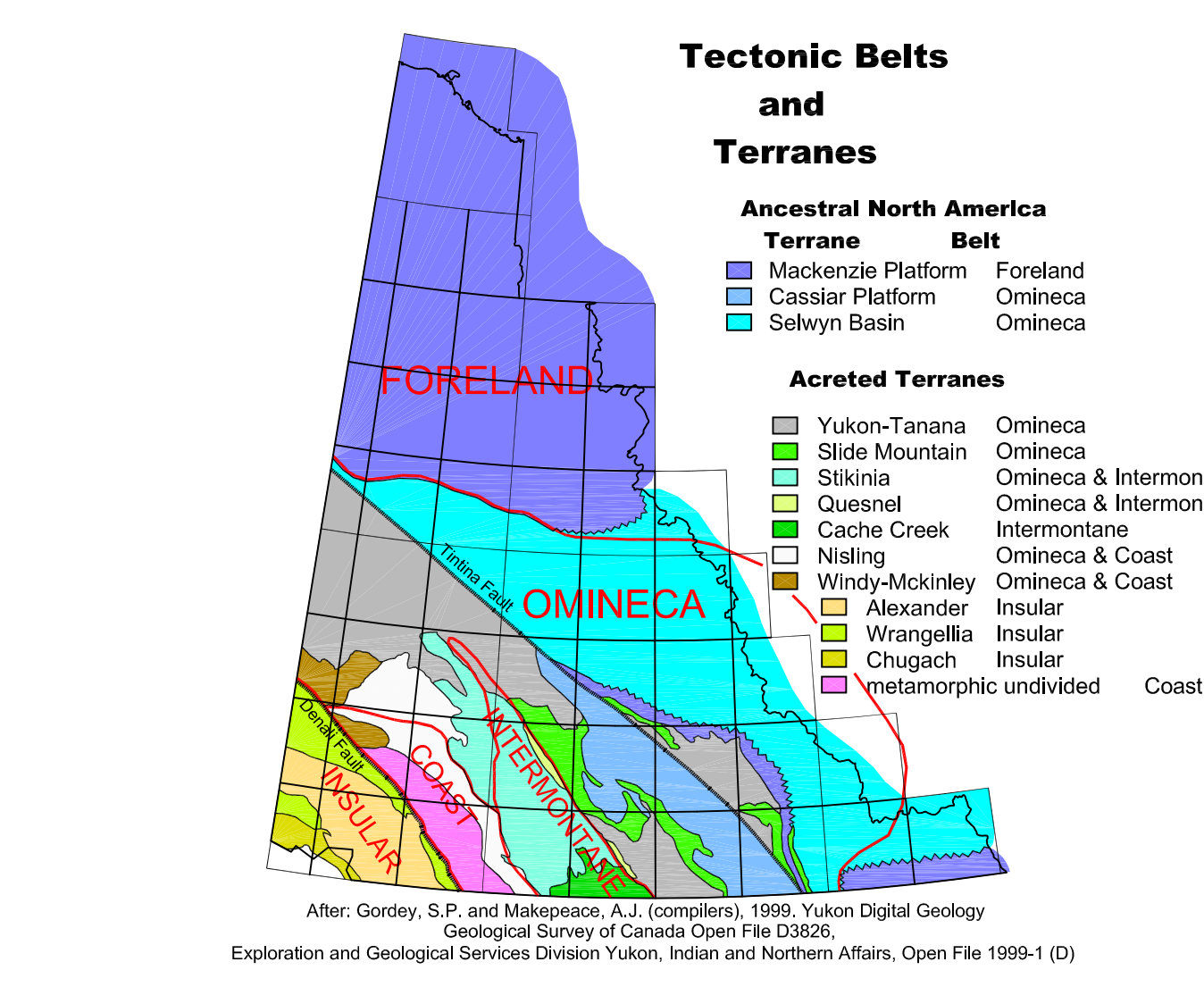
DEZAIDEASH
YUKON TERRITORY
115A
Scale
1:50,000
CONTOUR INTERVAL 500 FEET Elevations in Feet above Mean Sea Level
North American Datum 1983 Transverse Mercator Projection
DEZAIDEASH
YUKON TERRITORY
115A
Scale
1:50,000
CONTOUR INTERVAL 500 FEET Elevations in Feet above Mean Sea Level
North American Datum 1983 Transverse Mercator Projection

DEZAIDEASH
YUKON TERRITORY
115A
Scale
1:50,000
CONTOUR INTERVAL 500 FEET Elevations in Feet above Mean Sea Level
North American Datum 1983 Transverse Mercator Projection
The Dezaideash map area has been subjected to a number of late Pleistocene glacial events...

DEZAIDEASH
YUKON TERRITORY
115A
Scale
1:50,000
CONTOUR INTERVAL 500 FEET Elevations in Feet above Mean Sea Level
North American Datum 1983 Transverse Mercator Projection
References: Dezaideash Map Area - NTS 115A
Rampton, V.N. 1981. Surficial materials and landforms of Klondike National Park, Yukon Territory...

LEGEND
LEGEND TERRAIN HAZARDS
TERRAIN HAZARDS
Mass Movement Processes
Snow-avalanched
Extremely slow to moderate rates of failure in soil and bedrock...

NOTE: Where areas have more than one identified process or hazard, the colour of the encompassing polygon is assigned based on a hierarchical scheme relating to the severity of the hazard.



Exploration and Geological Services Division
Yukon Region
Indian and Northern Affairs Canada
Yukon GEOPROCESS File
Geological Processes and Terrain Hazards of Dezaideash 115A
Mougeot, C.M. and Walton, L.A.