

GEOPROCESS FILE - SUMMARY REPORT

OGILVIE RIVER MAP AREA - NTS 116G (E1/2) and 116F

INTRODUCTION

The GEOPROCESS File is a compilation of information and knowledge on geological processes and terrain hazards...

This report includes a brief discussion of the scope and limitations of the GEOPROCESS File compilation maps...

Geological Processes and Terrain Hazard Compilation Maps

The GEOPROCESS File maps were drafted on the 1:250 000 topographic base maps through interpretation from bedrock geology maps...

The GEOPROCESS File compilation maps are intended as a first out planning tool; the legend on the maps describes the general aspects of terrain hazards...

Bedrock Geology Summaries

Each 1:250 000 NTS map area is described according to morphogeological belts and terranes defined by Gabrielse et al. (1991) and Wheeler et al. (1991)...

The level of knowledge and understanding of Yukon geology is constantly evolving with more detailed mapping and development of geological models...

NOTE: THIS MAP HAS BEEN PRODUCED BY THE COMPILATION OF DATA FROM VARIOUS SOURCES...

THIS MAP IS ISSUED AS A PRELIMINARY GUIDE FOR WHICH THE USER WILL ACCEPT NO RESPONSIBILITY FOR ANY ERRORS, INACCURACIES OR UNDESIRABLE CONSEQUENCES.

EDITION 3 PRINT DATE: 9/00/20

BECKROCK GEOLOGY

The Ogilvie River map area is in the Foreland Belt and is generally mountainous except for extensive alluvial pediments at the head of the Ogilvie River...

The Ogilvie River map area is mainly underlain by carbonate rocks of the Mackenzie Platform as well as younger, non-marine clastic strata...

The oldest rocks in the map area belong to the pre-570 million year old Wernecke Supergroup...

The aforementioned packages of rocks are generally marine in origin. They are unconformably overlain by dominantly non-marine clastic strata...

The bedrock structure in the area is dominated by tectonic folds and thrust belt geometry complicated by a right angle bend where the east-trending Mackenzie Fold Belt intersects with an unmetamorphosed north-trending fold belt...

Mineral deposits and occurrences The Ogilvie map area hosts approximately 15 mineral occurrences...

The Ogilvie map area hosts approximately 15 mineral occurrences, most of which are sporadic occurrences in limestone and shales...

OLGILVIE RIVER 116 G & 116 F (E1/2)

Scale 1:50 000

CONTOUR INTERVAL 100 METRE Elevations in Metres above Mean Sea Level

North American Datum 1983 Transverse Mercator Projection

Universal Transvers Mercator Grid Zone 7

Scale 1:50 000

Scale 1:50 000

Scale 1:50 000

Scale 1:50 000

Scale 1:50 000

Scale 1:50 000

Scale 1:50 000

Scale 1:50 000

Scale 1:50 000

Scale 1:50 000

Scale 1:50 000

Scale 1:50 000

Scale 1:50 000

Scale 1:50 000

Scale 1:50 000

Scale 1:50 000

Scale 1:50 000

Scale 1:50 000

Scale 1:50 000

Scale 1:50 000

Scale 1:50 000

Scale 1:50 000

Scale 1:50 000

Scale 1:50 000

Scale 1:50 000

Scale 1:50 000

Scale 1:50 000

References

Ogilvie Map Area - NTS 116G (E1/2) and 116F

To be thorough, check the references for adjacent NTS map sheets and the General Reference List (See User Guide).

Most of the following references should be available for viewing in the DIAND library on the third floor of the Eljahn Smith building in Whitehorse.

Brown, R.J.E., 1967. Permafrost in Canada. Geological Survey of Canada, Map 2684A, (scale 1:7 603 200).

Canadian Earthquake Epicentre File; Maintained by the Geological Survey of Canada, Geophysical Division.

Dixon, J., 1992. A review of Cretaceous and Tertiary stratigraphy in the northern Yukon and adjacent Northwest Territories. Geological Survey of Canada, Paper 92-8, 79p. (NTS 106E, 106F, 106K, 106L, 116F/G, 116H, 116I, 116J, 116K, 116L, 116M, 116N, 116O, 116P, 117).

Gabrielse, H. and Yorath, C.J. (eds.), 1991. Geology of the Cordilleran Orogen in Canada. Geological Survey of Canada, Geology of Canada, No. 4, 844 p.

Geological Survey of Canada, xxx. Regional stream sediment and water geochemical reconnaissance data, NTS 116G, parts of 116C, 116F, 116G, 116H, 116I, 116J, 116K, 116L, 116M, 116N, 116O, 116P, 117.

Indian and Northern Affairs, 1995. Yukon MNFLE 116G(F, E1/2) - Ogilvie River. Exploration and Geological Services Division, Yukon Region, Indian and Northern Affairs Canada.

Jingfors, K. and McKenna, K., 1991. Initial environmental evaluation: Terrain, vegetation, wildlife and resource use for Dempster Highway Multi-Department mobile radio system and microwave project (prepared for Northwest, Whitehorse) (NTS 116B, 116F/G, 116H, DIAND Library).

Norris, D.K., 1982. Geology of Ogilvie River, Yukon Territory. Geological Survey of Canada, Map 1529A, scale 1:250 000.

Norris, D.K., 1984. Geology of the northern Yukon and northern District of Mackenzie. Geological Survey of Canada, Map 1581A, scale 1:500 000, NTS 116E, 116NE, 106SW, 106NW, 117SE, 107SW).

Norris, D.K., 1984b. Composite legend to accompany maps 1014A to 1029A, and structure section diagram 1030A (Devonian Proterozoic project area). (NTS 117, 116NE, 116NW, 116F, 116G, 116H, 106NW, 106E, 106F).

Norris, A.W., 1985. Stratigraphy of Devonian outcrop belts in northern Yukon Territory and northwestern District of Mackenzie (operation procedure area). Geological Survey of Canada, Memoir 410, 81 p. (includes maps). (NTS 116F/G, 116H, 106E, 106F).

Pugh, D.C., 1983. Pre-Mesozoic geology in the subsurface of Peel River map area, Yukon Territory and District of Yukon. Geological Survey of Canada, Memoir 401, 61 p. (includes maps).

Ricketts, B.D., 1988. The Monster Formation: A coastal fan system of late Cretaceous age, Yukon Territory. Geological Survey of Canada, Paper 88-14.

Thomas, R.D. and Rampton, V.D., 1982a. Surficial geology and geomorphology, Englebar Creek, Yukon Territory. Geological Survey of Canada, "B-series maps", Map 1982-8, scale 1:100 000.

Thomas, R.D. and Rampton, V.D., 1982b. Surficial geology and geomorphology, Lower Ogilvie River, Yukon Territory. Geological Survey of Canada, "B-series maps", Map 1982-9, scale 1:100 000.

Wheeler, J.O., Brookfield, J.J., Gabrielse, H., Morner, J.W.H., Tepper, H.W. and Woodsworth, G.J., 1991. Terrane map of the Canadian Cordillera. Geological Survey of Canada, Map 1712A.

Wheeler, J.O. and McFeeley, P., 1991. Tectonic Assemblage map of the Canadian Cordillera and adjacent parts of the United States of America. Geological Survey of Canada, Map 1712A.

*References used in compiling this map

Norris, D.K., 1984. Geology of the northern Yukon and northern District of Mackenzie. Geological Survey of Canada, Map 1581A, scale 1:500 000, NTS 116E, 116NE, 106SW, 106NW, 117SE, 107SW).

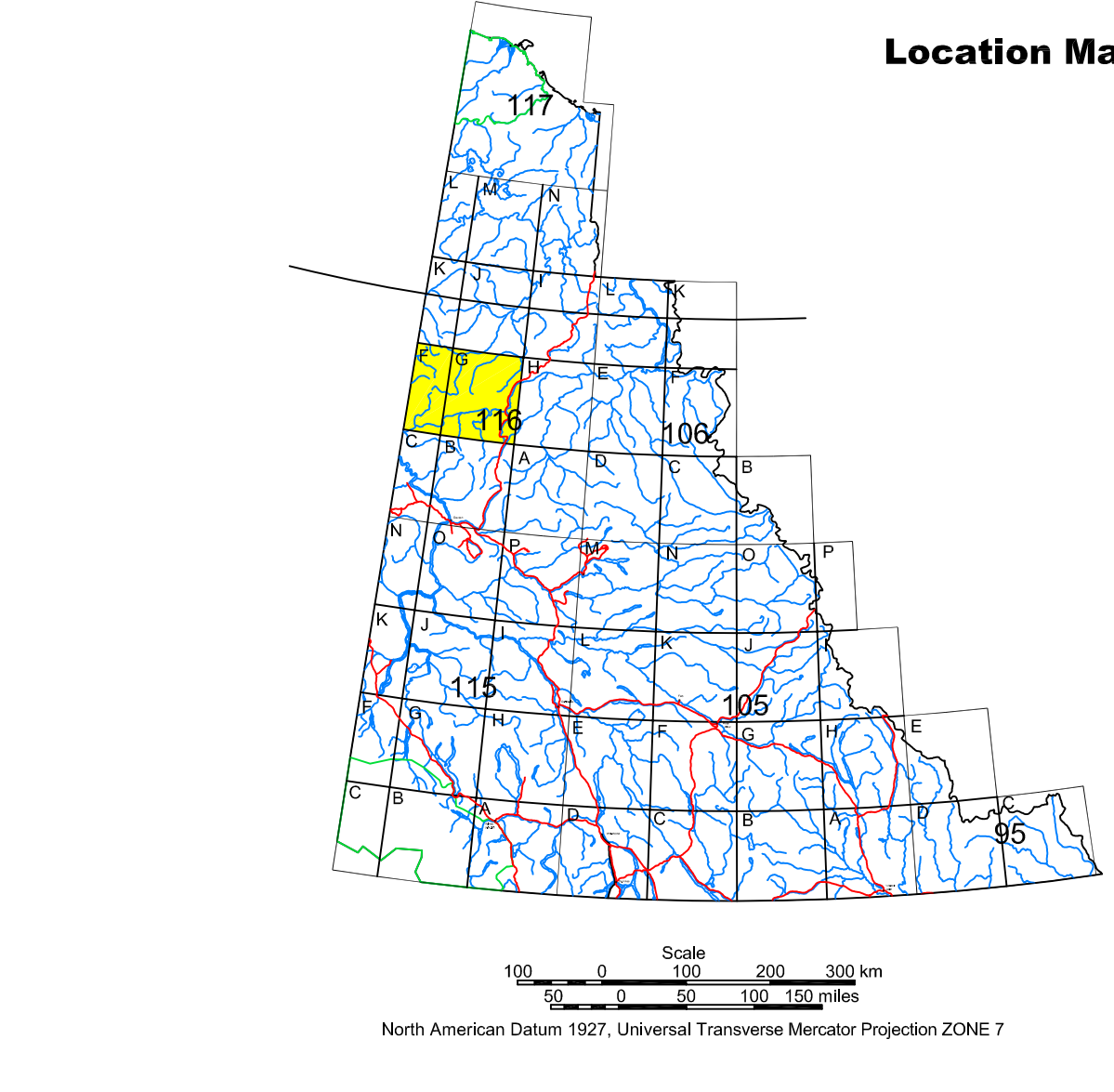
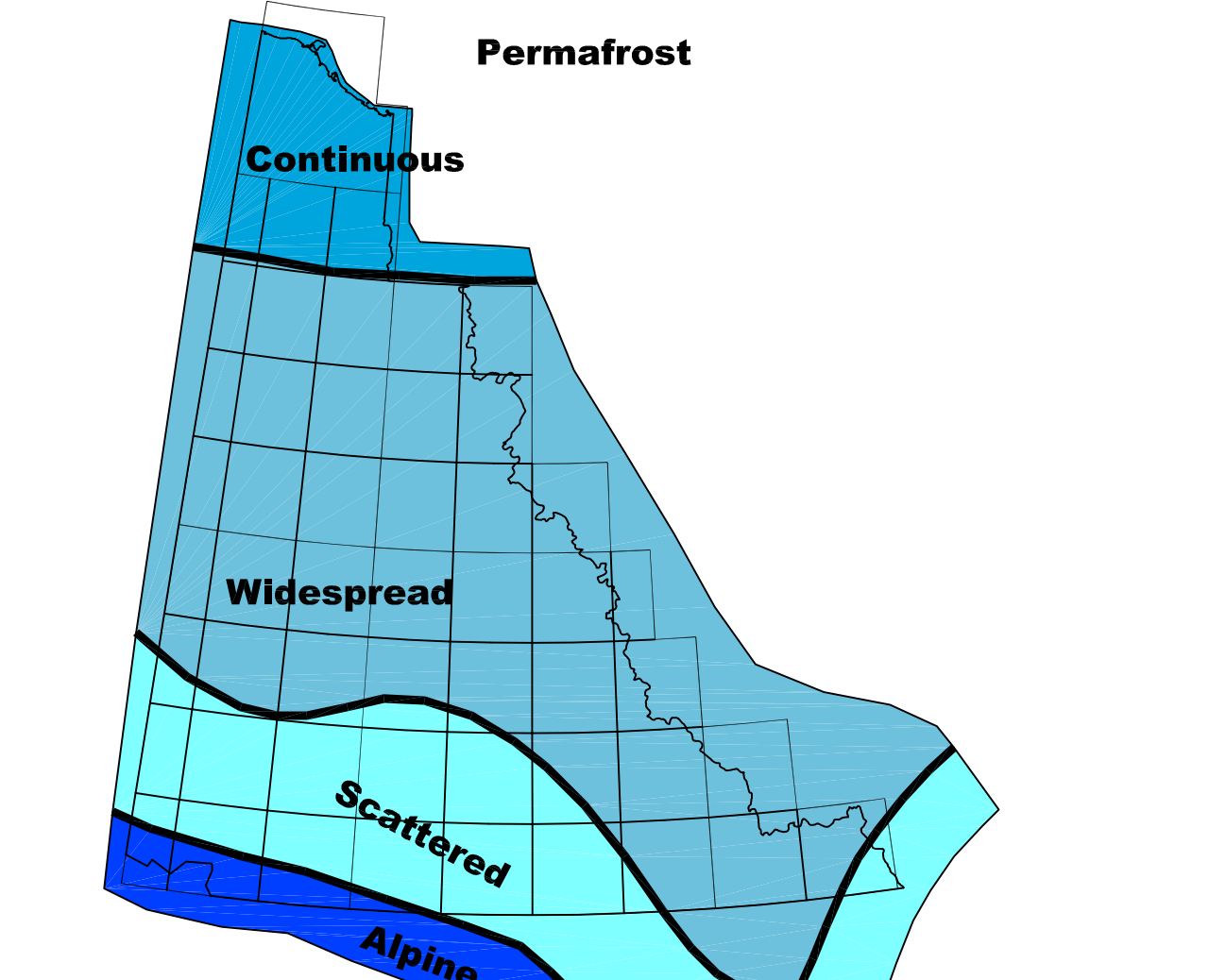
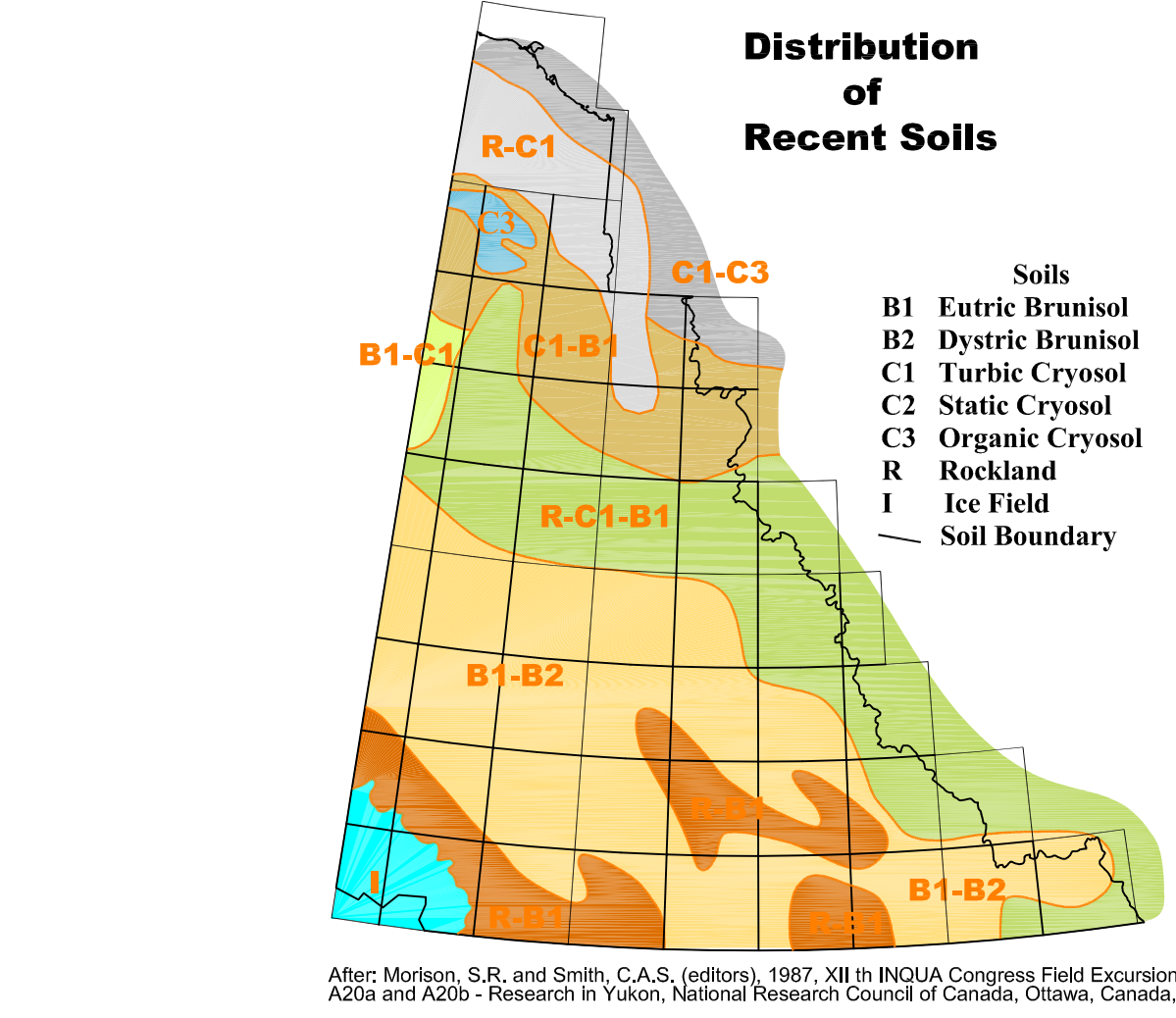
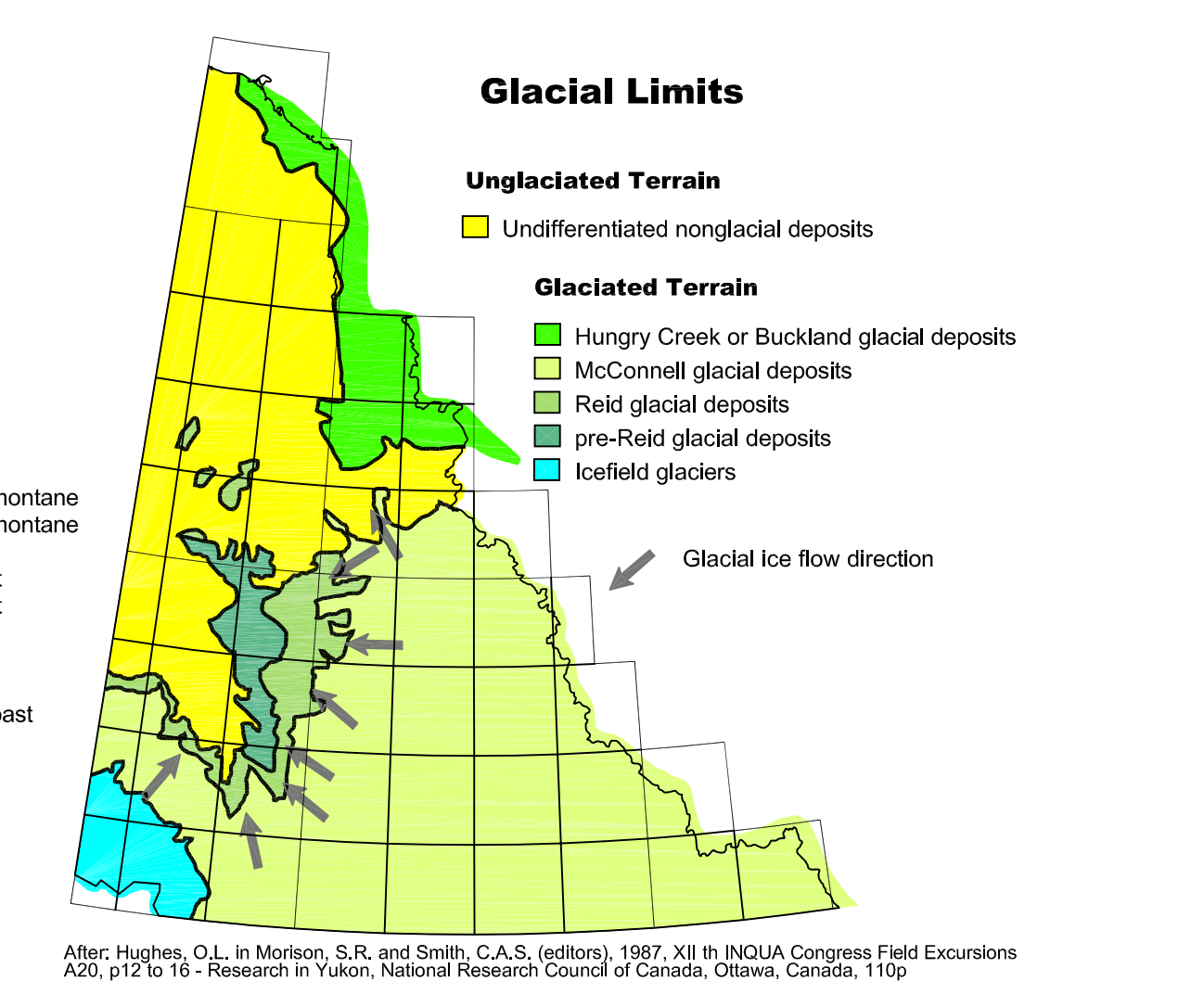
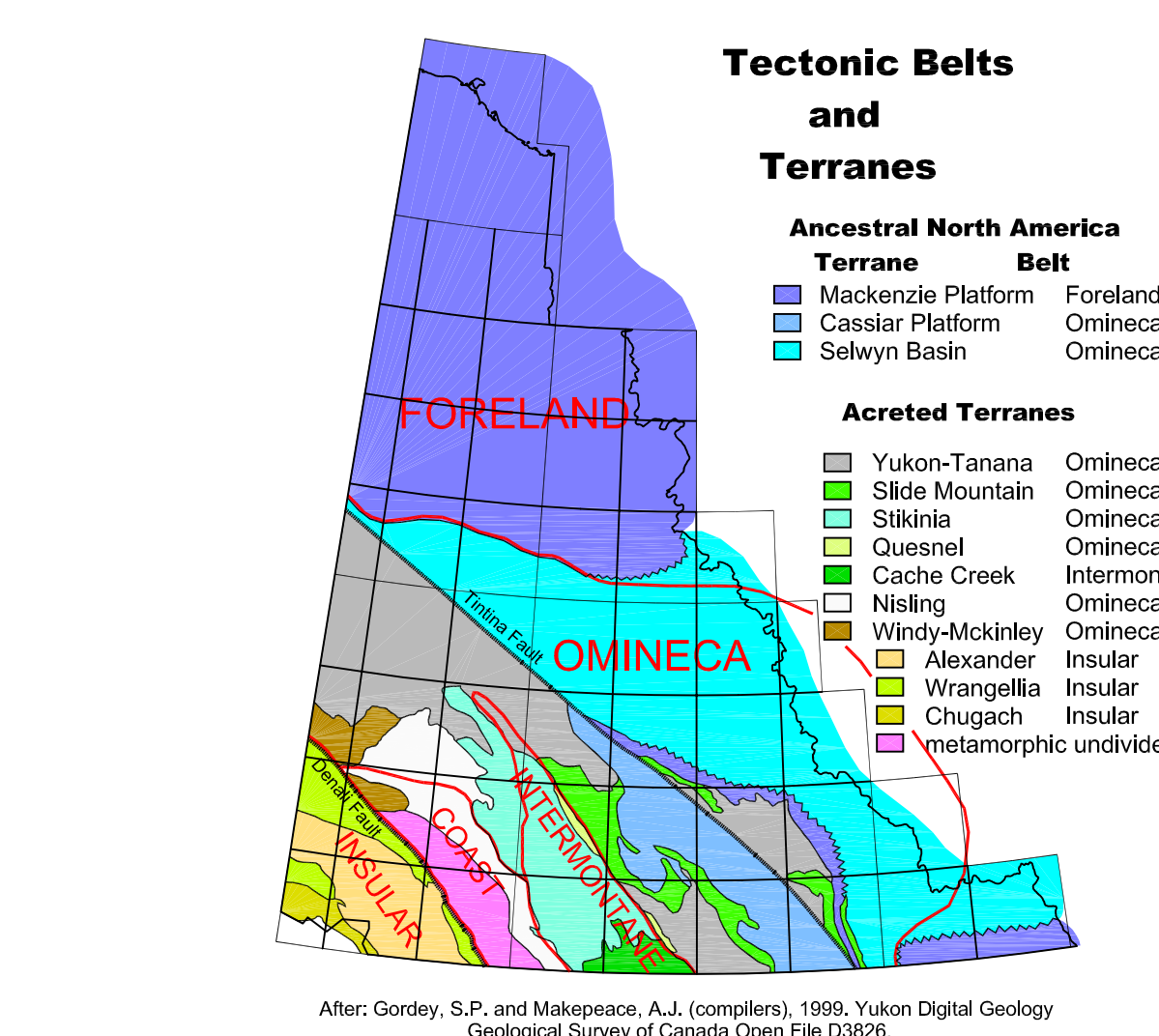
Norris, D.K., 1984. Geology of the northern Yukon and northern District of Mackenzie. Geological Survey of Canada, Map 1581A, scale 1:500 000, NTS 116E, 116NE, 106SW, 106NW, 117SE, 107SW).

Norris, D.K., 1984. Geology of the northern Yukon and northern District of Mackenzie. Geological Survey of Canada, Map 1581A, scale 1:500 000, NTS 116E, 116NE, 106SW, 106NW, 117SE, 107SW).

LEGEND

Legend table with columns: LEGEND TERRAIN HAZARDS, LEGEND GEOLOGICAL PROCESSES, LEGEND FAULTS, LEGEND QUATERNARY VOLCANISM, LEGEND SEISMIC EVENTS, LEGEND OTHER FEATURES. Includes symbols and descriptions for various hazards and geological features.

NOTE: Where areas have more than one identified process or hazard, the colour of the encompassing polygon is assigned based on a hierarchical scheme relating to the severity of the hazard. The relative order of severity is: Terrain Hazards (Mass Movement Processes then Fluvial Processes then Arctic, Alpine and Periglacial Processes) followed by Geological Processes.



Exploration and Geological Services Division Yukon Region Indian and Northern Affairs Canada Yukon GEOPROCESS File Geological Processes and Terrain Hazards of Ogilvie River 116G & 116F (E1/2) by Mougeot, C.M. and Walton, L.A.