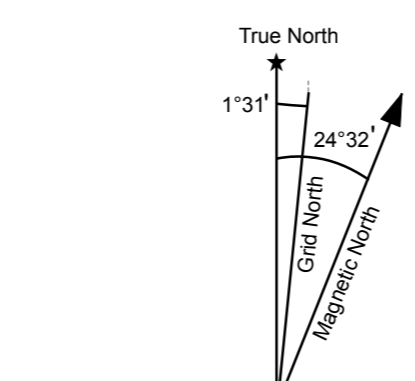
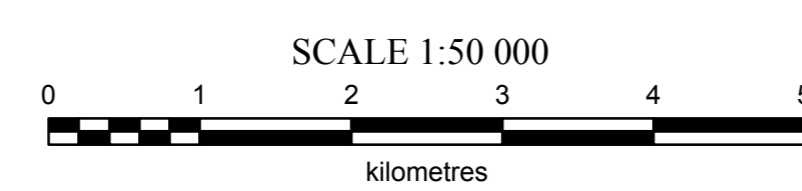


1:50 000 scale topographic base data provided by CENTRE FOR TOPOGRAPHIC INFORMATION, NATURAL RESOURCES CANADA

ONE THOUSAND METRE GRID
Universal Transverse Mercator Projection
North American Datum 1983
Zone 9

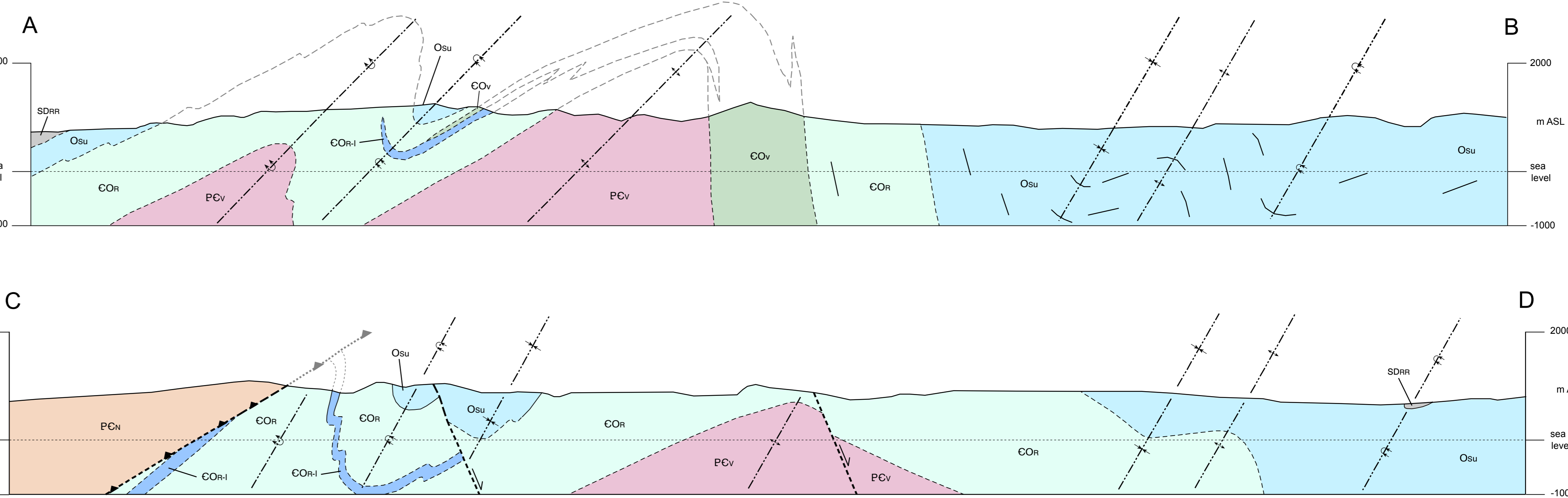
CONTOUR INTERVAL 20 METRES
Elevations in metres above Mean Sea Level

BEDROCK GEOLOGY
95D/6
YUKON



Use diagram only to obtain numerical values
APPROXIMATE MEAN DECLINATION 2005
FOR CENTRE OF MAP

| | | |
|------------------------|--------------------------|---------------------|
| 95D/12 HULSE LAKE | 95D/11 | 95D/10 |
| 95D/5 AICLAND CREEK | THIS MAP 95D/6 | 95D/7 |
| 95D/4 IRONS CREEK | 95D/3 MOUNT GULLLAND | 95D/2 LOOTZ LAKE |



LEGEND

LAYERED ROCKS

DEVONIAN-CARBONIFEROUS

Besa River Formation
DCBr grey and dark brown, silty, locally calcareous shale; striped, orange-brown weathering; minor interbedded massive, pale grey, quartz sandstone

SILURIAN-DEVONIAN

SDC carbonate - bedded grey to black dolostone or grey limestone; includes Muncho-McConnell, Stone and Dunedin formations, locally includes Silurian Nonda Formation

Road River Group (undivided)

SDRr bedded, pin-striped, graphitic black shale; basal part thinly interbedded black chert and black elastic dolostone (Nonda Formation); minor interbedded black, cream-weathering dolostone

ORDOVICIAN

Sunblood Formation

SDS thick-bedded, light and dark grey dolostone; buff-weathering, locally planar-laminated, locally bioturbated; minor grey, fossiliferous limestone

CAMBRIAN-ORDOVICIAN

SDCv basalt / gabbro - vesicular and amygdaloidal, dark green basalt; medium crystalline, massive gabbro

Rabbitkettle Formation

DCr grey to brownish grey, silty to nodular limestone with lesser interbeds of indistinctly bedded, pale grey limestone

DCv

light grey, fine-grained, indistinctly bedded, resistant limestone

HADRYNIAN-LOWER CAMBRIAN

Vampire Formation

PCv phyllite - dark grey to greenish grey, noncalcareous, pin-striped, silty phyllite; lesser interbeds of quartzose pebbly conglomerate and cream quartz sandstone

Hyland Group

Narchilla Formation

PCv bedded, green, muscovite-chlorite phyllite; weathers rusty tan; interbedded with maroon phyllite; minor interbeds of light grey quartz sandstone

-note - darker colours delineate areas of outcrop

ACKNOWLEDGEMENTS

Catherine Juells and Brandon Pike assisted in the field during 2006 and 2007, respectively.

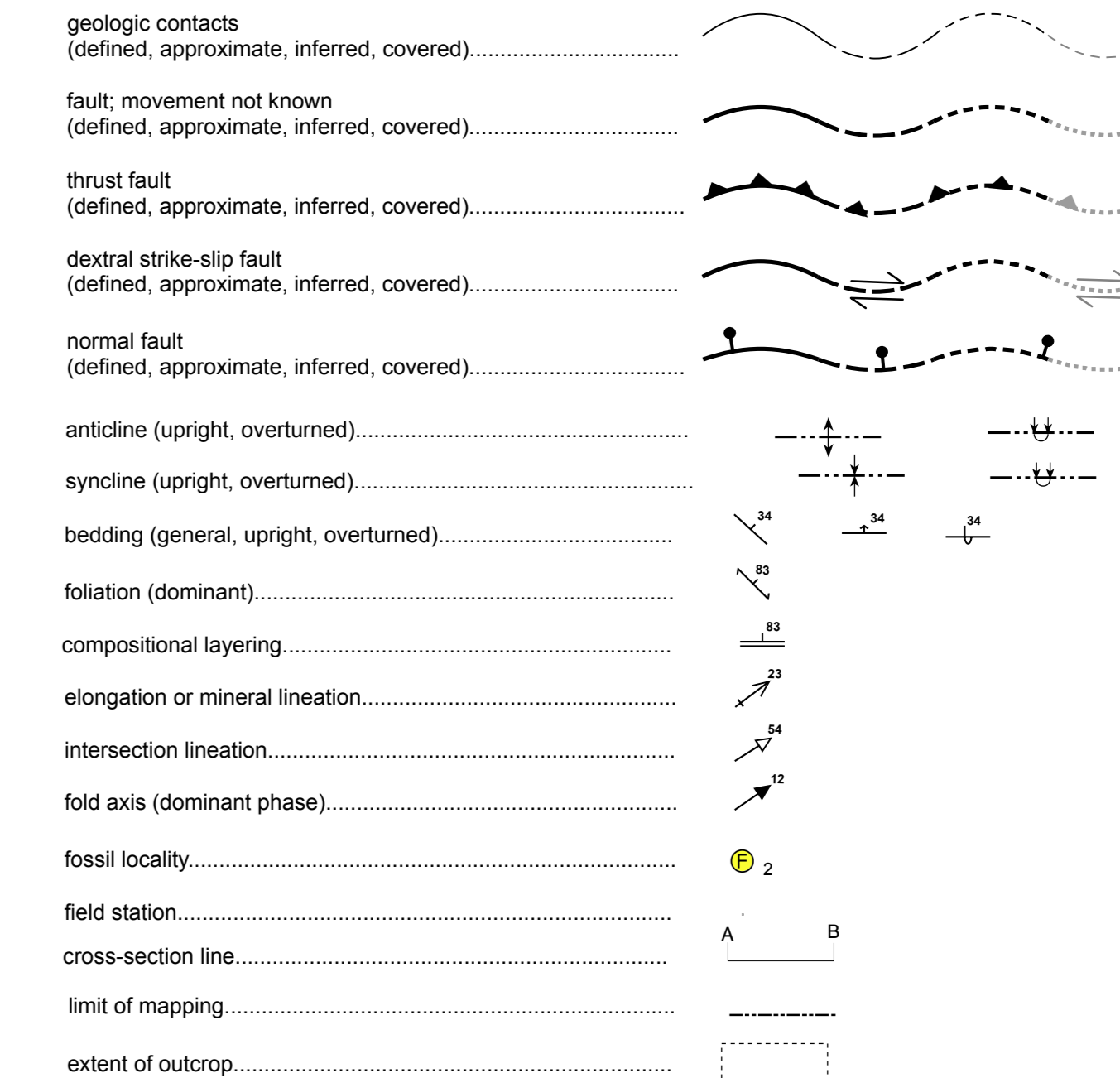
Trans North Helicopters provided safe transport for camp moves and outcrop viewing using their Jet Ranger based in Watson Lake.

International Barytex Resources Ltd. granted permission for viewing and sampling core and using their exploration camp as a staging location.

| Mineral Occurrences Yukon MINFILE (Deklerk and Traynor, 2005) | | | |
|--|--------|------------------|---------------------------------------|
| 95D 005 | ● Mel | deposit | Zn, Pb, Ba replacement Pb, Zn, barite |
| 95D 023 | ● Quo | unknown | unknown |
| 95D 027 | ● Jori | showing | Zn MVT |
| 95D 032 | ● Jeri | drilled prospect | Zn SEDEX |

| Locality | GSC-ID | Material | Thermal Alteration | Unit | FOSSILS | | Reference |
|----------|----------|-------------------------|--------------------|-------|---|--|----------------|
| | | | | | Age Range | | |
| 1 | O-081032 | coral | na | SDSst | Late Ordovician - Late Silurian | | Norford (1967) |
| 2 | O-079161 | graptolites | na | SDSst | Early Silurian (Middle or Late Lividiventer) | | Norford (1967) |
| 3 | C-081054 | brachiopods, trilobites | na | COHr | Late Cambrian (Tempebaia) - Early Ordovician (Temnodocan) | | Norford (1984) |
| 4 | C-092927 | brachiopods, trilobites | na | COHr | Late Cambrian - Early Ordovician | | Norford (1984) |

SYMBOLS



REFERENCES

ARCHER, A.R., 1982. Report on geological and geochemical survey conducted June 6-June 29, 1982. Unpublished mineral assessment Report #091423. Energy, Mines and Resources, Yukon Government, 12 p.

DEKLERK, R. and TRAYNOR, S. (compilers), 2005. Yukon MINFILE 2005 - A database of mineral occurrences. Yukon Geological Survey, CD-ROM.

GABRIELSE, H. and BLUSSON, S.L., 1969. Geology of Coal River map-area, Yukon Territory and District of Mackenzie (95D). Geological Survey of Canada, Paper 68-38, 22 p.

KING, H.L., 1995. Report on diamond drilling MEL property, Yukon. Unpublished mineral assessment report #093353. Energy, Mines and Resources, Yukon Government, 14 p.

MILLER, D.C., 1977. Geological and geochemical report on the MEL JEAN and WET claims, Yukon. Unpublished mineral assessment report #090234. Energy, Mines and Resources, Yukon Government, 16 p.

MILLER, D.C. and WRIGHT, T., 1986. Mel barite-zinc-lead deposit, Yukon-an exploration case history. IN: Mineral Deposits of Northern Cordillera, J.A. Morin (ed.), Canadian Institute of Mining and Metallurgy, Special Volume 37, p. 129-141.

NORFORD, B.S., 1967. Report on ten lots of fossils from the Coal River map-area, District of Mackenzie and Yukon Territory, collected by Drs. S.L. Blusson and H. Gabrielse, 1967 (NTS 95D). Geological Survey of Canada, Report No. S-0 & BSN 1967.

NORFORD, B.S., 1984. Report on two lots of fossils from the Coal River map-area, Yukon Territory, submitted by D.C. Miller, Sulpetro Minerals Ltd. (NTS 95D). Geological Survey of Canada, Report No. C-01-BSN-1984.

SENFT, D.A., 1996. 1996 assessment report on the MEL property. Unpublished mineral assessment report #093667. Energy, Mines and Resources, Yukon Government, 6 p.

RECOMMENDED CITATION

PIGAGE, L., 2007. Preliminary geology map of NTS 95D/6 (1:50 000 scale). Yukon Geological Survey, Open File 2007-4.

Digital cartography and drafting by Lee Pigage, Yukon Geological Survey.

Any revisions or additional geological information known to the user would be welcomed by the Yukon Geological Survey.

Paper copies of this map, the accompanying report and Yukon MINFILE may be purchased from Geoscience Information and Sales, c/o Whitehorse Mining Recorder, Energy, Mines and Resources, Yukon Government, Room 102 - 300 Main St., Whitehorse, Yukon, Y1A 2B5. Ph. 867-667-5200, Fx. 867-667-5150, Email: geosales@ygv.yk.ca.

A digital PDF (Portable Document File) file of this map may be downloaded free of charge from the Yukon Geological Survey website: <http://www.geology.gov.yk.ca>.

Yukon Geological Survey
Energy, Mines and Resources
Government of Yukon

Open File 2007-4
Preliminary Geology Map
of
NTS 95D/6
(1:50 000 scale)

by
Lee Pigage