

GSC Open File 5695 - YGS Open File Report 2008-2
Stream Sediment and Water Sample Locations
Nahoni Range area, west-central Yukon
 (parts of NTS 116F, G and K)

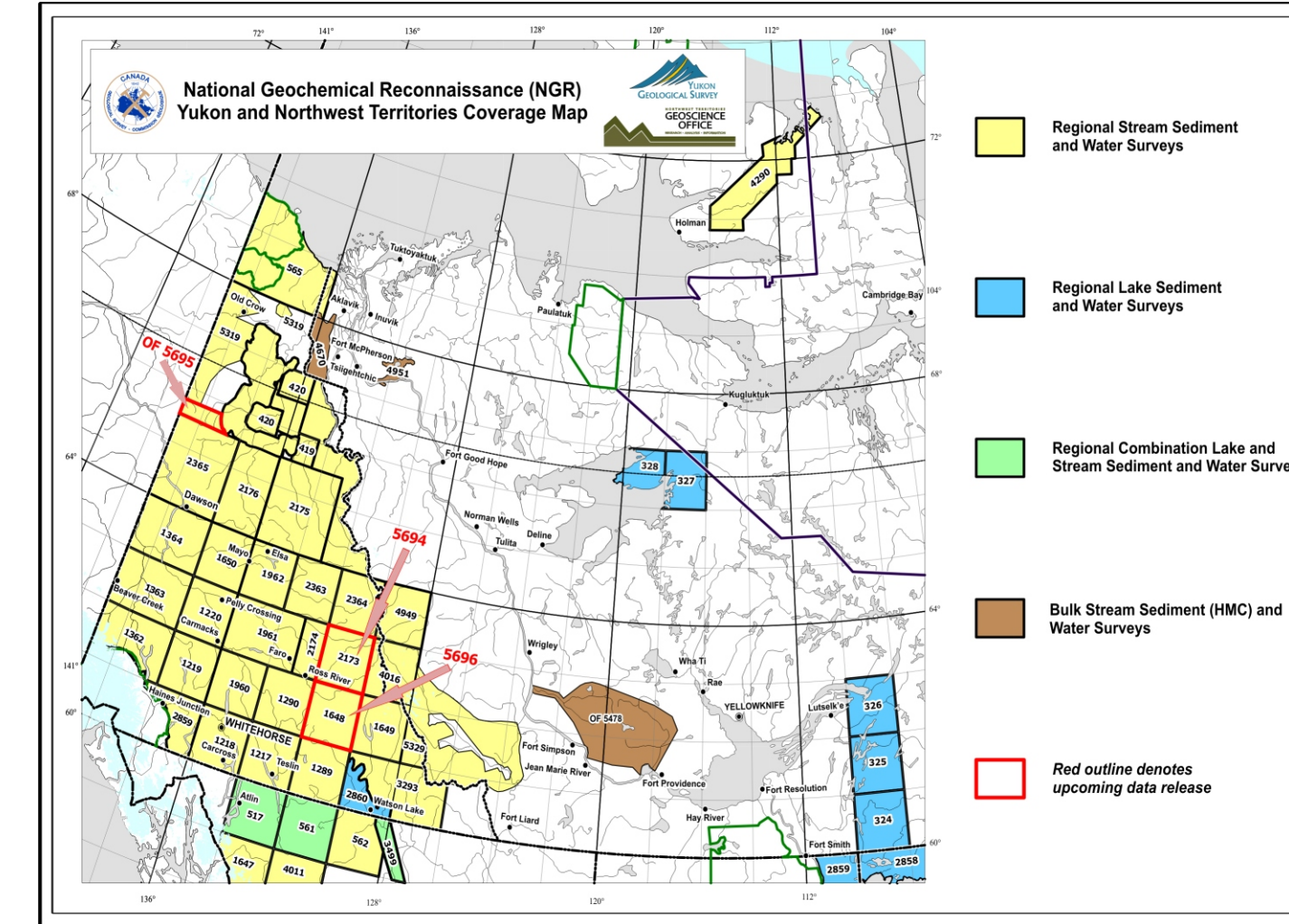
In July 2006, staff of the Geological Survey of Canada carried out a helicopter-supported regional stream silt sediment and water survey in an area centred roughly 200 km north of Dawson City. Parts of NTS map sheets 116F, G and K were sampled at a target density of 1 site per 13 km². In all, 355 sites were sampled yielding 376 silt and 349 water samples.

Analytical data, for up to 64 variables in stream silts and 55 variables for waters, as well as site specific field observations are contained in the accompanying data listings. Descriptions of sample collection, preparation and analytical methods are detailed in the preface of this open file.

At the time of collection, all samples are assigned a unique-id composed of the National Topographic System (NTS) mapsheet, year of collection and a sequential four digit number. Due to space restrictions on the sample location map this unique-id is shortened to a four-digit sequence number prefixed by the letter of the 1:250,000 NTS mapsheet.

For example, sample 1002 collected from NTS 116F in 2006 is assigned a unique-id of 116F_2006_1002. 1002F and appear on the map as •1002F

Samples collected as a field duplicate pair appear with a slash (/) separating the two sample numbers. For example, the field duplicate pair of 116F_2006_1013 and 116F_2007_1014 appear on the sample location map as •1013F/1014F



Ressources naturelles Canada



Geology Legend

- Quaternary**
 Q silt/sand/gravel/ash
- Upper Cretaceous**
 KM mudstone/sandstone/bentonite
- Lower Cretaceous**
 KS shale/siltstone
 IKM shale/siltstone/sandstone/coal
- Jurassic and Lower Cretaceous**
 JKH shale/siltstone
- Middle to Upper Triassic**
 TrJ shale/argillite/sandstone/limestone
- Lower and Middle Permian**
 PJC mudstone/shale/sandstone/conglo/limestone
- Upper Carboniferous**
 CE siltstone/sandstone/limestone
 CH sandstone/conglo/limestone
- Upper Devonian and Carboniferous and Permian**
 uDPF shale/siltstone/sandstone/conglo/limestone/chert
- Lower, Middle (?) and Upper Devonian**
 DME mudstone/shale/sandstone/conglo
- Upper Devonian**
 uDC shale/chert
- Lower and Middle Devonian**
 DG shale/limestone
- Upper Cambrian to Lower Devonian**
 CDB dolostone/shale/limestone/conglo
- Cambrian to Devonian**
 CDR shale/limestone/chert/sandstone/conglo/breccia
- Middle Proterozoic**
 mPPFI argillite/quartzite/dolostone/
- Lower Proterozoic**
 IPQ shale/siltstone/sandstone/dolostone

Geology base clipped from:
 Gorley, S.P. and Makepeace, A.J. (comp.) 1999:
 Yukon bedrock geology in Yukon digital geology, S.P. Gorley and A.J. Makepeace (comp.);
 Geological Survey of Canada Open File D3826 and Exploration and Geological Services Division,
 Yukon, Indian and Northern Affairs Canada, Open File 1999-1(D)

Minifile	Primary Names	Status	Primary Commodities	Deposit Type
116F 008	SITDOWN	PROSPECT	COAL	Coal
116G 045	GIG	ANOMALY		Mississippi Valley-Type Pb-Zn (MVT)
116G 046	COOT	SHOWING	LEAD	Mississippi Valley-Type Pb-Zn (MVT)
116K 009	BERN	SHOWING	COPPER, ZINC	Mississippi Valley-Type Pb-Zn (MVT)



OPEN FILE
DOSSIER PUBLIC
5695
 GEOLOGICAL SURVEY OF CANADA
 COMMISSION GEOLOGIQUE DU CANADA
 2008

Open files are products that have not gone through the GSC formal publication process.
 Les dossiers publics sont des produits qui n'ont pas été soumis au processus officiel de publication de la GSC.

Recommended citation:
 Friske, P.W.B., McCurdy, M.W., Day, S.J.A., McNeil, R.J., Grenier, A.G.
 2008: Regional Stream Sediment and Water Geochemical Data, Nahoni Range area, west-central Yukon (parts of NTS 116F, G and K). Geological Survey of Canada, Open File 5695 / Yukon Geological Survey Open File 2008-2. 1 CD-ROM.