



GSC Open File 5696 - YGS Open File 2008-3
Regional Stream Sediment and Water Geochemical Data, Finlayson Lake area,
southeastern Yukon (NTS 105G)

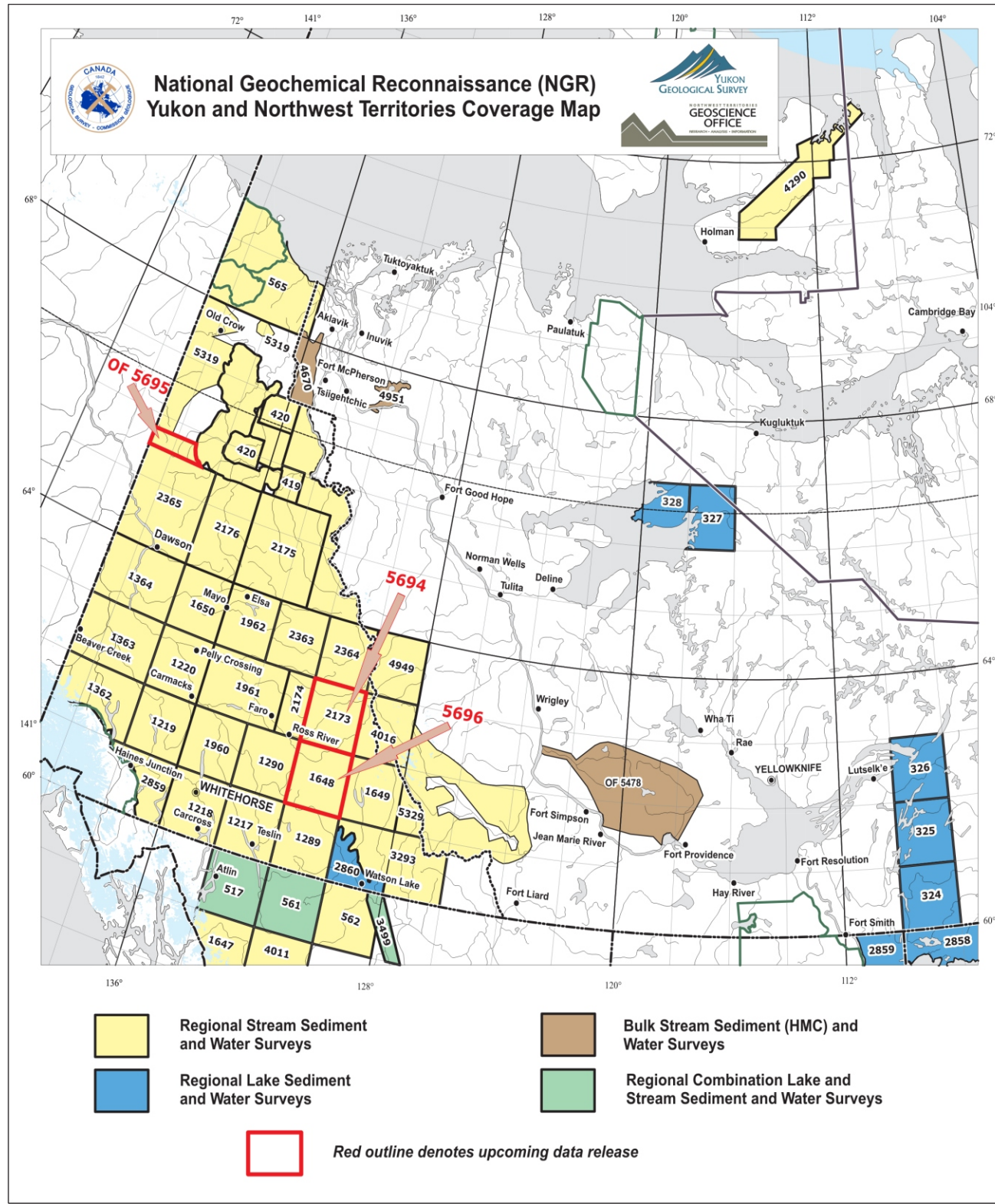
During the field season of 1989, staff of the Geological Survey of Canada carried out a helicopter-supported regional stream silt sediment and water survey in an area centred roughly 300 km northeast of Whitehorse. NTS map sheet 105G was sampled at a target density of 1 site per 13 km². In all, 886 sites were sampled yielding 939 silt and 902 water samples from 11,420 km².

Analytical data, for up to 39 elements including loss-on-ignition in stream silts and 3 variables for waters, as well as site specific field observations are contained in the accompanying data listings. Descriptions of sample collection, preparation and analytical methods are detailed in the preface of this open file.

At the time of collection, all samples are assigned a unique-id composed of the National Topographic System (NTS) mapsheet, year of collection and a sequential four digit number. Due to space restrictions on the sample location map this unique-id is shortened to a four-digit sequence number.

For example, routine sample 1004 collected from NTS 105J in 1989 is assigned a unique-id of 105J_1989_1004 and appear on the map as **1004**.

Samples collected as a field duplicate pair appear with a slash (/) separating the two sample numbers. For example, the field duplicate pair of 105J_1989_1002 and 105J_1989_1003 appear on the sample location map as **1002/1003**.

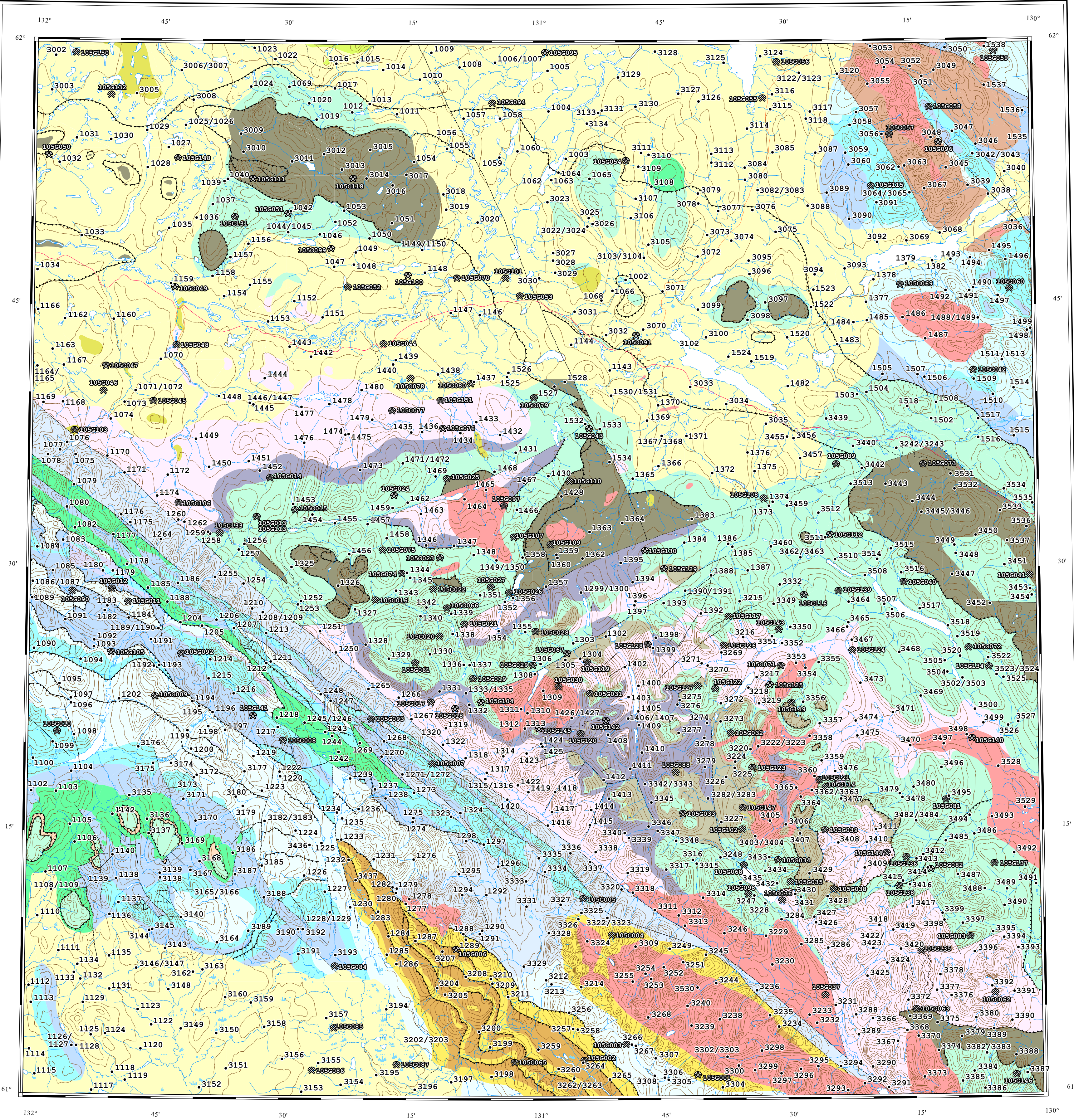


Geology Legend

Quaternary	
Q	silt/sand/gravel/sash
Lower Tertiary, mostly(?) Eocene	
LTR	rhylolite/tuff/breccia/basalt/flows/necks/dikes/shale/sandstone/conglo
mid-Cretaceous	
mKS	quartz monzonite/granodiorite/quartz diorite/syenite/granite/quartz monzonite/granodiorite/dikes/??
KSF	crystal tuff
mKC	granite/quartz monzonite/granodiorite
Upper Triassic	
UTAC	siltstone/shale/limestone
UTS	conglo
Middle to Upper Triassic	
UTJ	shale/argillite/sandstone/limestone
Carboniferous and Permian	
CPA	basalt/diorite/gabbro/greenstone/argillite/siltstone/tuff/dunite/peridotite/serpentinite/eclogite/orthogneiss/sandstone
Late Devonian to Mississippian	
DPME	quartz monzonite
Upper Devonian and Mississippian	
DME	siltstone/sandstone/conglo/barite/limestone
Upper Devonian to lower Mississippian	
DMEC	slate/sandstone/conglomerate/volcanic
Devonian, Mississippian and(?) older	
DMN	quartzite/gr-quartzite/qt-ms-cl-schist/conglo/grit
Middle Silurian to Middle Devonian	
SDA	mdstone/siltstone/sandstone/quartzite/limestone/dolostone
Middle Silurian to Middle Devonian	
SDM	quartzite/limestone/dolostone
Ordovician to Lower Devonian	
ODR	shale/chert/siltstone/limestone/conglomerate
Ordovician to Devonian, locally Mississippian	
ODRC	shale/siltstone/quartzite/basalt/flows
Upper Cambrian and Lower Ordovician	
COK	basalt/flows/diabase/diorite/sills/greenstone/phyllite
Upper Cambrian and Ordovician	
COR	chert/siltstone/phyllite/limestone/conglo/flow/breccia/tuff/slate
?Cambrian to Lower Devonian?	
CDS	shale/slate/siltstone/limestone
Lower Cambrian	
ICR	limestone/dolostone/marble/schist
Upper Proterozoic to Lower Cambrian	
PCH	phyllite/shale/sandstone/grit/conglomerate/limestone/marble
Upper Proterozoic to Lower Cambrian	
PCB	sandstone/limestone/schist/amphibolite/marble/gneiss
Proterozoic and Palaeozoic	
Psb	cl-bi-schist/amphibolite/hb-gneiss/ae-pg-cl-bi-schist/pg-cl-schist/phyllite/quartzite/ultramafics
Late Proterozoic and Palaeozoic	
PPN	cl-bi-schist/marble/bi-qt-ms-schist/qp-fp-ms-schist/amphibolite

Geology base clipped from:
Gowdy, S.F. and Mackenzie, A.J. (comp.) 1999.
Yukon geology in Yukon digital geology. S.F. Gowdy and A.J. Mackenzie (comp.).
Geological Survey of Canada Open File 53876 and Exploration and Geological Services Division.
Yukon, Indian and Northern Affairs Canada, Open File 1999-1(1)

Minefile	Primary Names	Status	Primary Commodities	Deposit Type
105001	MONT	PROSPECT	COPPER	Poly metallic Veins Ag-Pb-Zn+Au
105002	ROXY	UNKNOWN	Unknown	Unknown
105003	BLUBERRY	DRILLED PROSPECT	LEAD, SILVER	Poly metallic Veins Ag-Pb-Zn+Au
105004	EMMA	UNKNOWN	Unknown	Unknown
105005	SLAM	SHOWING	ZINC	Poly metallic Veins Ag-Pb-Zn+Au
105006	TINTINA	DEPOSIT	LEAD, SILVER, ZINC	Poly metallic Veins Ag-Pb-Zn+Au
105007	PLAMB	SHOWING	LEAD, ZINC	Mississippi Valley Type Pb-Zn (MVT)
105008	HASSELBERG	DEPOSIT	LEAD, SILVER, ZINC	Kuroko Massive Sulphide Cu-Pb-Zn
105009	MCNEIL	SHOWING	COPPER	Besshi Massive Sulphide Cu-Zn
105010	HILLER	UNKNOWN	Unknown	Poly metallic Veins Ag-Pb-Zn+Au
105011	AXE	SHOWING	COPPER	Poly metallic Veins Ag-Pb-Zn+Au
105012	CONNOLLY	UNKNOWN	Unknown	Unknown
105013	HOO	DRILLED PROSPECT	LEAD, ZINC	Pb-Zn Skarn
105014	CHER	ANOMALY	Unknown	Unknown
105015	NAN	ANOMALY	Unknown	Besshi Massive Sulphide Cu-Zn
105016	EL	PROSPECT	LEAD, SILVER, ZINC	Kuroko Massive Sulphide Cu-Pb-Zn
105017	PICK	SHOWING	LEAD, SILVER	Poly metallic Veins Ag-Pb-Zn+Au
105018	GRASS	SHOWING	MOLYBDENUM, TUNGSTEN	Poly metallic Veins Ag-Pb-Zn+Au
105019	BOOT	DRILLED PROSPECT	TUNGSTEN	W Skarn
105020	RILEY	ANOMALY	Unknown	Unknown
105021	ZELINSKI	SHOWING	COPPER, LEAD, ZINC	Poly metallic Veins Ag-Pb-Zn+Au
105022	OUR	UNKNOWN	Unknown	Unknown
105023	GLI	UNKNOWN	Unknown	Unknown
105024	GOD	ANOMALY	COPPER, ZINC	Unknown
105025	CHISHOLM	UNKNOWN	Unknown	Unknown
105026	RIVERA	DRILLED PROSPECT	COPPER, ZINC	Besshi Massive Sulphide Cu-Zn
105027	LEO	PROSPECT	COPPER, GOLD	Poly metallic Veins Ag-Pb-Zn+Au
105028	CYP	PROSPECT	COPPER, LEAD, ZINC	Poly metallic Veins Ag-Pb-Zn+Au
105029	GEE	SHOWING	Unknown	Poly metallic Veins Ag-Pb-Zn+Au
105030	PTI	SHOWING	COPPER, SILVER, URANIUM	Unknown
105031	ROH	SHOWING	COPPER, SILVER	Au-Quartz Veins
105032	PAC	DRILLED PROSPECT	COPPER, LEAD, ZINC	Kuroko Massive Sulphide Cu-Pb-Zn
105033	TAK	ANOMALY	Unknown	Unknown
105034	FYRE	DEPOSIT	Unknown	Besshi Massive Sulphide Cu-Zn
105035	TOP	SHOWING	COPPER, ZINC	Poly metallic Veins Ag-Pb-Zn+Au
105036	DIB	ANOMALY	COBALT, COPPER, ZINC	Cu Skarn
105037	BLACK	ANOMALY	Unknown	Unknown
105038	NORTH RIVER	SHOWING	COPPER	Cu Skarn
105039	VINCENT	DRILLED PROSPECT	COPPER, LEAD, SILVER, ZINC	Poly metallic Veins Ag-Pb-Zn+Au
105040	JAY	DRILLED PROSPECT	BARITE, ZINC	Kuroko Massive Sulphide Cu-Pb-Zn
105041	FINLAYSON	ANOMALY	ZINC	Unknown
105042	MCVOY	ANOMALY	Unknown	Sedimentary Exhalative Zn-Pb-Ag (Sedex)
105043	BOY	SHOWING	ASBESTOS	Ultramafic-hosted asbestos
105044	MNK	UNKNOWN	Unknown	Unknown
105045	STARR	ANOMALY	Unknown	Unknown
105046	TAG	UNKNOWN	Unknown	Unknown
105047	HORFON	UNKNOWN	Unknown	Unknown
105048	PIP	SHOWING	GOLD	Besshi Massive Sulphide Cu-Zn
105049	COW	ANOMALY	Unknown	Unknown
105050	ELK	UNKNOWN	Unknown	Unknown
105051	CHOW	PROSPECT	COPPER, ZINC	Volcanogenic Massive Sulphide - type not determined
105052	DEB	PROSPECT	COAL	Volcanogenic Massive Sulphide - type not determined
105053	CAMPBELL	ANOMALY	Unknown	Unknown
105054	SUN	ANOMALY	Unknown	Unknown
105055	PHIL	DRILLED PROSPECT	ZINC	Poly metallic Veins Ag-Pb-Zn+Au
105056	PAY	DRILLED PROSPECT	LEAD, ZINC	Sedimentary Exhalative Zn-Pb-Ag (Sedex)
105057	RIS	SHOWING	COPPER	Cu-Ag Quartz Veins
105058	SPUD	SHOWING	LEAD, ZINC	Pb-Zn Skarn
105059	ABO	UNKNOWN	Unknown	Unknown
105060	JAKE	SHOWING	COPPER, LEAD, SILVER, ZINC	Pb-Zn Skarn
105061	HOOLE	SHOWING	ZINC	Pb-Zn Skarn
105062	MAP	SHOWING	LEAD, SILVER	Poly metallic Veins Ag-Pb-Zn+Au
105063	WATERS	SHOWING	LEAD	Poly metallic Veins Ag-Pb-Zn+Au
105064	INGS	SHOWING	COPPER	Cu-Ag Quartz Veins
105065	CW	ANOMALY	Unknown	Unknown
105066	LAWN	UNKNOWN	Unknown	Unknown
105067	ASH	DRILLED PROSPECT	COPPER, ZINC	Pb-Zn Skarn
105068	HARMAN	PROSPECT	COPPER, ZINC	Unknown
105069	RENO	PROSPECT	LEAD - ZINC, SILVER	Sedimentary Exhalative Zn-Pb-Ag (Sedex)
105070	MYDA	PROSPECT	TUNGSTEN	W Skarn
105071	FETISH	DEPOSIT	COPPER, LEAD, SILVER, ZINC	Kuroko Massive Sulphide Cu-Pb-Zn
105072	QUANDARY	ANOMALY	GOLD, NICKEL, SILVER	Unknown
105073	BEV	ANOMALY	CHROMIUM, GOLD, NICKEL	Unknown
105074	MCINTOSH	ANOMALY	Unknown	Unknown
105075	FRIEBERG	ANOMALY	Unknown	Unknown
105076	FLIN	DRILLED PROSPECT	LEAD, ZINC	Kuroko Massive Sulphide Cu-Pb-Zn
105077	FLOM	ANOMALY	Unknown	Unknown
105078	HURDON	ANOMALY	COPPER, ZINC	Unknown
105079	ARBORNE	DRILLED PROSPECT	Unknown	Unknown
105080	MONEY	SHOWING	COPPER, LEAD, ZINC	Kuroko Massive Sulphide Cu-Pb-Zn
105081	AKHURST	DRILLED PROSPECT	LEAD, SILVER, ZINC	Volcanogenic Massive Sulphide - type not determined
105082	BARB	DRILLED PROSPECT	COPPER	Kuroko Massive Sulphide Cu-Pb-Zn
105083	GENULFECT	ANOMALY	Unknown	Unknown
105084	BEND	ANOMALY	Unknown	Unknown
105085	KNOT	DRILLED PROSPECT	Unknown	Unknown
105086	COOKIE	ANOMALY	GOLD, ZINC	Volcanogenic Massive Sulphide - type not determined
105087	HENNEL	SHOWING	BARITE, ZINC	Kuroko Massive Sulphide Cu-Pb-Zn
105088	FARBANK	SHOWING	Unknown	Unknown
105089	BOX	ANOMALY	ZINC	Volcanogenic Massive Sulphide - type not determined
105090	COYNE	ANOMALY	Unknown	Unknown
105091	NEBOCAT	DRILLED PROSPECT	LEAD, ZINC	Sedimentary Exhalative Zn-Pb-Ag (Sedex)
105092	DWONK	DRILLED PROSPECT	BARITE	Sedimentary Exhalative Zn-Pb-Ag (Sedex)
105093	PEANUT	UNKNOWN	Unknown	Unknown
105094	WAD	SHOWING	LEAD, ZINC	Sedimentary Exhalative Zn-Pb-Ag (Sedex)
105095	FOG	SHOWING	TUNGSTEN	W Skarn
105096	ANT	DRILLED PROSPECT	COPPER, ZINC	Kuroko Massive Sulphide Cu-Pb-Zn
105097	BRENDEN	PROSPECT	COPPER, LEAD, ZINC	Volcanogenic Massive Sulphide - type not determined
105098	HARKEN	PROSPECT	COPPER, LEAD, ZINC	Besshi Massive Sulphide Cu-Pb-Zn
105099	ADDISON	DRILLED PROSPECT	Unknown	Unknown
105100	HOWDEE	SHOWING	GOLD, SILVER	W Skarn
105101	RUSH	UNKNOWN	Unknown	Unknown
105102	SANBERS	DRILLED PROSPECT	TUNGSTEN	W Skarn
105103	WHIT	ANOMALY	ZINC	Unknown
105104	ST. CYR	ANOMALY	Unknown	Unknown
105105	RIVER	ANOMALY	COPPER, ZINC	Unknown
105106	WOLV	UNKNOWN	Unknown	Unknown
105107	COPLAND	UNKNOWN	Unknown	Unknown
105108	ETS	ANOMALY	Unknown	Unknown
105109	TOR	UNKNOWN	Unknown	Unknown
105110	DESOTO	DRILLED PROSPECT	COPPER, ZINC	Unknown
105111	AZZUS	ANOMALY	Unknown	Unknown
105112	LADY LEE	SHOWING	JADE/NEPHRITE	Jade
105113	JEFF	PROSPECT	LEAD - ZINC, SILVER	Poly metallic Veins Ag-Pb-Zn+Au
105114	CHARLIE	ANOMALY	COPPER, ZINC	Unknown
105115	TAG	DEPOSIT	COPPER, GOLD, LEAD, SILVER, ZINC	Kuroko Massive Sulphide Cu-Pb-Zn
105116	ICE	DEPOSIT	COPPER	Cyprian Massive Sulphide Cu-Pb-Zn
105117	SHOT	SHOWING	COPPER, LEAD, ZINC	Pb-Zn Skarn
105118	BLE LINE	SHOWING	LEAD, ZINC	Kuroko Massive Sulphide Cu-Pb-Zn
105119	NET	SHOWING	COPPER, LEAD, ZINC	Kuroko Massive Sulphide Cu-Pb-Zn
105120	OVERTIME	SHOWING	LEAD, ZINC	Kuroko Massive Sulphide Cu-Pb-Zn
105121	GOAL	PROSPECT	COPPER, ZINC	Kuroko Massive Sulphide Cu-Pb-Zn
105122	RED LINE	DRILLED PROSPECT	COPPER, ZINC	Kuroko Massive Sulphide Cu-Pb-Zn
105123	ROH	DRILLED PROSPECT	LEAD, SILVER, ZINC	Pb-Zn Skarn
105124	COBB	SHOWING	COPPER, LEAD, ZINC	Besshi Massive Sulphide Cu-Zn
105125	DOG	ANOMALY	Unknown	Unknown
105126	MAKOR	DRILLED PROSPECT	LEAD, ZINC	Kuroko Massive Sulphide Cu-Pb-Zn
105127	LEAGUE	DRILLED PROSPECT	LEAD, ZINC	Kuroko Massive Sulphide Cu-Pb-Zn
105128	DOT	ANOMALY	Unknown	Unknown
105129	NECK	ANOMALY	Unknown	Unknown
105130	AREA 18	DRILLED PROSPECT	COPPER, LEAD, ZINC	Kuroko Massive Sulphide Cu-Pb-Zn
105131	PUCK	DRILLED PROSPECT	COPPER, LEAD, ZINC	Kuroko Massive Sulphide Cu-Pb-Zn
105132	ELEN CREEK	DRILLED PROSPECT	ZINC	Kuroko Massive Sulphide Cu-Pb-Zn
105133	WHITE CREEK	DRILLED PROSPECT	COPPER, ZINC	Kuroko Massive Sulphide Cu-Pb-Zn
105134	MASK	ANOMALY	Unknown	Unknown
105135	POP	PROSPECT	LEAD, ZINC	Kuroko Massive Sulphide Cu-Pb-Zn
105136	NAD	DRILLED PROSPECT	COPPER, ZINC	Kuroko Massive Sulphide Cu-Pb-Zn
105137	VERMILION	DRILLED PROSPECT	COPPER, SILVER, ZINC	Kuroko Massive Sulphide Cu-Pb-Zn
105138	BLAKE	ANOMALY	Unknown	Unknown
105139	GPE	DEPOSIT	GOLD, LEAD, SILVER, ZINC	Kuroko Massive Sulphide Cu-Pb-Zn
105140	ARENA	ANOMALY	COPPER	Unknown
105141	WINGER	ANOMALY	LEAD, ZINC	Unknown
105142	IC	PROSPECT	LEAD, ZINC	Kuroko Massive Sulphide - type not determined
105143	REGAL RIDGE	DRILLED PROSPECT	EMERALD	Schist-hosted emerald
105144	ASSIST	ANOMALY	COPPER, ZINC	Unknown
105145	NHL	SHOWING	COPPER, LEAD, SILVER, ZINC	Volcanogenic Massive Sulphide - type not determined
105146	SPICE	ANOMALY	GOLD, SILVER	Epithermal Au-Ag Low Sulphidation
105147	GOOD GRIFF	SHOWING	Unknown	Volcanogenic Massive Sulphide - type not determined



Natural Resources Canada / Ressources naturelles Canada
Yukon Energy, Mines and Resources
Canada

OPEN FILE DOSSIER PUBLIC
5696
2008



Recommended citation:
Finlayson, F.W.B., Hornbrow, E.H.W., McCurdy, M.W., Day, S.J.A., McNeil, R.J.
2008. Regional Stream Sediment and Water Geochemical Data, Finlayson Lake area,
southeastern Yukon (NTS 105G) Geological Survey of Canada, Open File 5696 /
Yukon Geological Survey Open File 2008-3
1 CD-ROM