



GSC Open File 6043 - YGS Open File 2009-1  
Regional Stream Sediment and Water Geochemical Data, Frances Lake area,  
southeastern Yukon (NTS 105H)

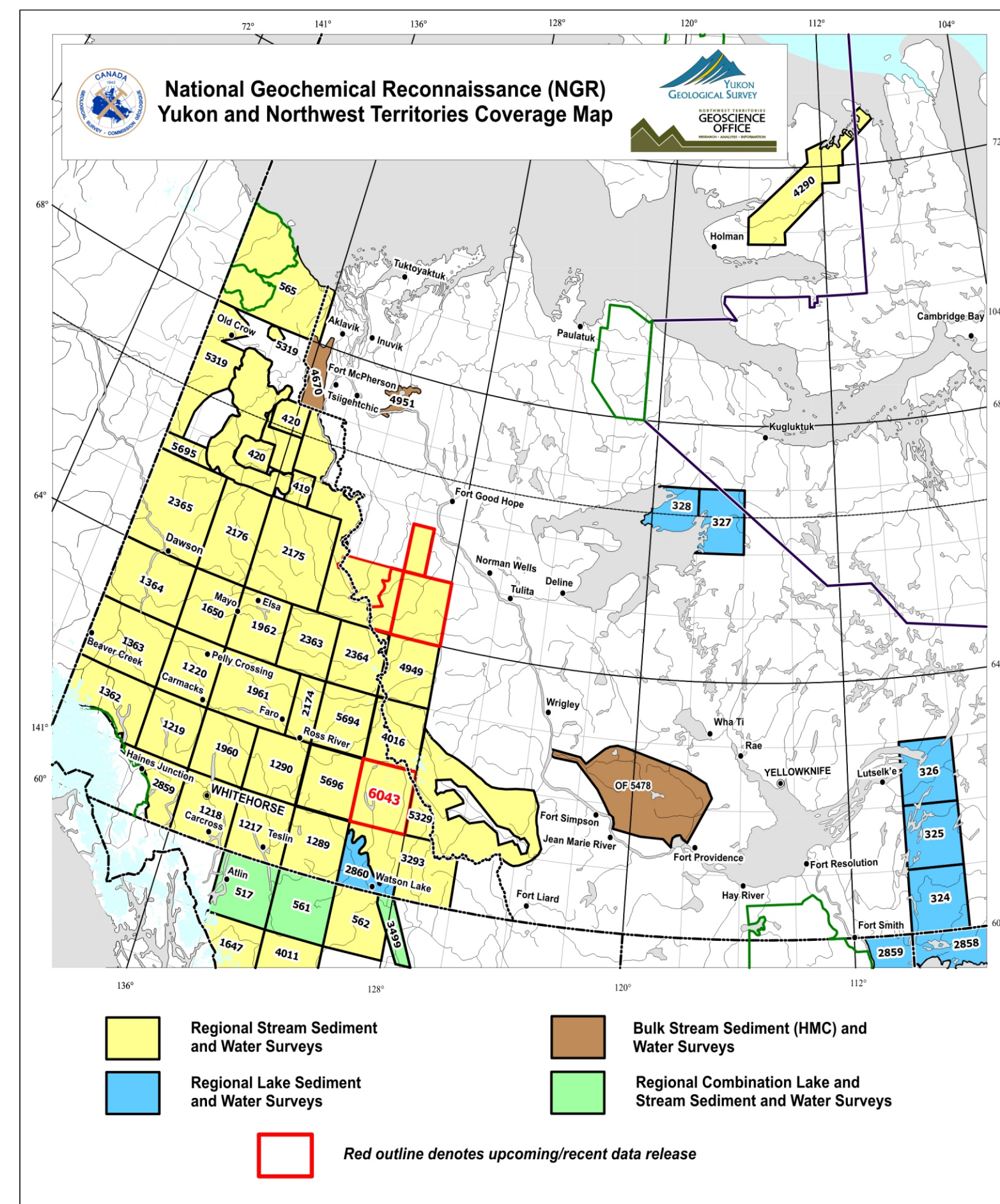
During the field season of 1987, staff of the Geological Survey of Canada carried out a helicopter-supported regional stream silt sediment and water survey in an area centred roughly 160 km north of Watson Lake. NTS map sheet 105H was sampled at a target density of 1 site per 13 km<sup>2</sup>. In all, 917 sites were sampled yielding 972 silt and 960 water samples from 11,799 km<sup>2</sup>.

Analytical data, for up to 39 elements including loss-on-ignition in stream silts and 3 variables for waters, as well as site specific field observations are contained in the accompanying data listings. Descriptions of sample collection, preparation and analytical methods are detailed in the preface of this open file.

At the time of collection, all samples are assigned a unique-id composed of the National Topographic System (NTS) mapsheet, year of collection and a sequential four digit number. Due to space restrictions on the sample location map this unique-id is shortened to a four-digit sequence number.

For example, routine sample 1004 collected from NTS 105H in 1987 is assigned a unique-id of 105H\_1987\_1004 and appear on the map as ● 1002

Samples collected as a field duplicate pair appear with a slash (/) separating the two sample numbers. For example, the field duplicate pair of 105H\_1987\_1011 and 105H\_1987\_1012 appear on the sample location map as ● 1011/1012



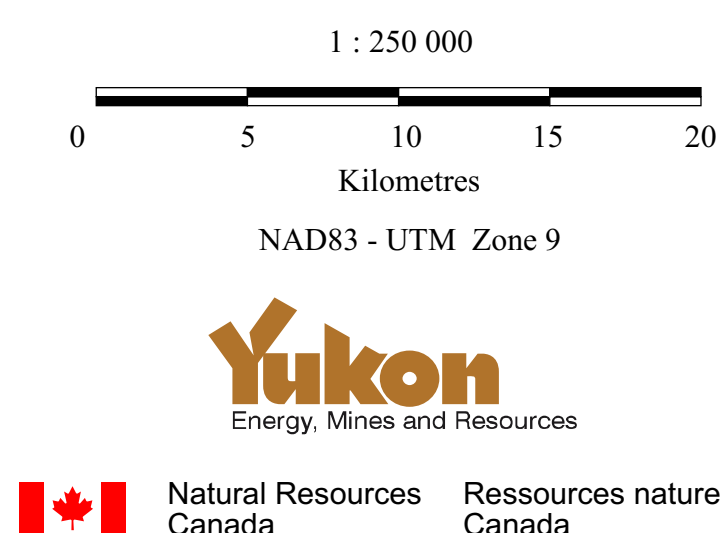
Min_ID	MINFILE Number	Primary Names	Status	Primary Commodities	Deposit Type
001	05H1001	JAN	PROSPECT	COPPER	Cu Skarn
002	05H1002	MIDAS	SHOWING		Cu Skarn
003	05H1003	KEE	UNKNOWN		Unknown
004	05H1004	COX	UNKNOWN	LEAD, SILVER, ZINC	Polymetallic Veins Ag-Pb-Zn <sup>++</sup> -Au
005	05H1005	FLIP	DRILLED PROSPECT	COPPER, LEAD, SILVER, ZINC	Pb-Zn Skarn
006	05H1006	DC	DRILLED PROSPECT	COPPER, LEAD, SILVER, ZINC	Pb-Zn Skarn
007	05H1007	VAGAS	ANOMALY		Unknown
008	05H1008	MIKO	DRILLED PROSPECT	LEAD, LEAD + ZINC, SILVER, ZINC	Pb-Zn Skarn
009	05H1009	GLENNA	DRILLED PROSPECT	LEAD, SILVER, ZINC	Pb-Zn Skarn
010	05H1010	STRELA	SHOWING	LEAD, SILVER, ZINC	Pb-Zn Skarn
011	05H1011	MAX	DRILLED PROSPECT	LEAD, SILVER, TUNGSTEN, ZINC	Pb-Zn Skarn
012	05H1012	KLATZA	ANOMALY		Unknown
013	05H1013	FRANCES	SHOWING	COPPER	Cu <sup>++</sup> -Ag Quartz Veins
014	05H1014	LIND	OPEN PIT PRODUCER	Jade	Jade
015	05H1015	DOUG	SHOWING	COPPER	Cu <sup>++</sup> -Ag Quartz Veins
016	05H1016	TUCHTUA	OPEN PIT PAST PRODUCER	JADE/NEPHRITE	Jade
017	05H1017	EAST ARM	SHOWING		Unknown
018	05H1018	GALE	PROSPECT	LEAD, SILVER, ZINC	Pb-Zn Skarn
019	05H1019	MAY	SHOWING	COPPER, SILVER, ZINC	Pb-Zn Skarn
020	05H1020	MAPEL	SHOWING	COPPER, LEAD, ZINC	Polymetallic Veins Ag-Pb-Zn <sup>++</sup> -Au
021	05H1021	MATT BERRY	DEPOSIT	LEAD, SILVER, ZINC	Kuroko Massive Sulphide Cu-Pb-Zn
022	05H1022	FLUKE	SHOWING	LEAD, SILVER, ZINC	Pb-Zn Skarn
023	05H1023	LUCY	UNKNOWN		Unknown
024	05H1024	CANYON	DRILLED PROSPECT	LEAD, SILVER	Pb-Zn Skarn
025	05H1025	STU	SHOWING	COPPER	W Skarn
026	05H1026	TERRY	PROSPECT	TUNGSTEN	W Skarn
027	05H1027	CORRIE	DRILLED PROSPECT	BISMUTH, COPPER, ZINC	Unknown
028	05H1028	BLACK JACK	DRILLED PROSPECT	ZINC	Pb-Zn Skarn
029	05H1029	FIR TREE	DRILLED PROSPECT	LEAD, SILVER, ZINC	Pb-Zn Skarn
030	05H1030	MONTSE	PROSPECT	TUNGSTEN	W Skarn
031	05H1031	RON	PROSPECT	LEAD, SILVER, ZINC	Pb-Zn Skarn
032	05H1032	HELEN	UNKNOWN		W Skarn
033	05H1033	BROD	PROSPECT	LEAD, ZINC	Pb-Zn Skarn
034	05H1034	PALMER	SHOWING		Unknown
035	05H1035	RAIN	DRILLED PROSPECT	COPPER, GOLD, LEAD, SILVER	Plutonic Related Au
036	05H1036	ROAD	DRILLED PROSPECT	GOLD	Unknown
037	05H1037	BOY	SHOWING	LEAD, SILVER, ZINC	Pb-Zn Skarn
038	05H1038	NORT	UNKNOWN		Unknown
039	05H1039	GOAT	UNKNOWN		Unknown
040	05H1040	REEE	SHOWING	MOLYBDENUM	Mo Skarn
041	05H1041	BO	SHOWING	COPPER, TUNGSTEN	W Skarn
042	05H1042	TANYA	DRILLED PROSPECT	COPPER, TUNGSTEN	W Skarn
043	05H1043	GUY	SHOWING	COPPER, TUNGSTEN	W Skarn
044	05H1044	RINA	SHOWING	MOLYBDENUM, TUNGSTEN	Porphyry Mo (Low F-Type)
045	05H1045	FULCHER	ANOMALY		Unknown
046	05H1046	TUSTLES	UNKNOWN	COPPER	Unknown
047	05H1047	FIN	DRILLED PROSPECT	LEAD, ZINC	Sedimentary Exhalative Zn-Pb-Ag (Sedex)
048	05H1048	TED	PROSPECT	BARITE	Barite Veins
049	05H1049	NARCHILLA	PROSPECT	LEAD, SILVER, ZINC	W Skarn
050	05H1050	LEE	DRILLED PROSPECT	LEAD, SILVER, ZINC	Pb-Zn Skarn
051	05H1051	YUSEZYU	SHOWING	COPPER, TUNGSTEN	W Skarn
052	05H1052	DODGE	SHOWING	MOLYBDENUM, TUNGSTEN	Mo Skarn
053	05H1053	TULCHI	TUNGSTEN	MOLYBDENUM, TUNGSTEN	Porphyry Mo (Low F-Type)
054	05H1054	HITCH-HIKER	SHOWING	LEAD + ZINC + COPPER, SILVER	Polymetallic Manto Ag-Pb-Zn
055	05H1055	ZEUS	SHOWING	LEAD, ZINC	W Skarn
056	05H1056	CARBIDE	SHOWING	TUNGSTEN	W Skarn
057	05H1057	RICHARD	UNKNOWN		Unknown
058	05H1058	ALM	UNKNOWN		Pb-Zn Skarn
059	05H1059	BUS	PROSPECT	COPPER, TUNGSTEN	W Skarn
064	05H1064	MARKHAM	SHOWING	COPPER, LEAD, ZINC	Pb-Zn Skarn
065	05H1065	MELNYCHUK	UNKNOWN		Unknown
066	05H1066	CALLAGHAN	UNKNOWN		Unknown
067	05H1067	REKAB	UNKNOWN		Unknown
068	05H1068	SUSAN	DRILLED PROSPECT	TUNGSTEN	W Skarn
069	05H1069	PALMER	UNKNOWN		Unknown
070	05H1070	CALL	DRILLED PROSPECT	TUNGSTEN	W Skarn
071	05H1071	BARBARA	UNKNOWN		Volcanogenic Massive Sulphide - type not determined
072	05H1072	WOAH	DRILLED PROSPECT	TUNGSTEN	W Skarn
073	05H1073	TAI	DRILLED PROSPECT	TUNGSTEN	W Skarn
074	05H1074	WILMOT	UNKNOWN		Unknown
075	05H1075	MAXI	DRILLED PROSPECT	LEAD, ZINC	Sedimentary Exhalative Zn-Pb-Ag (Sedex)
076	05H1076	JONES	UNKNOWN		Unknown
077	05H1077	ZILLI	SHOWING	TUNGSTEN	W Skarn
078	05H1078	JULIA	DRILLED PROSPECT	COPPER	Besshi Massive Sulphide Cu-Zn
079	05H1079	TINY	UNKNOWN		Unknown
080	05H1080	KNEEL	SHOWING	COPPER, LEAD, ZINC	Polymetallic Veins Ag-Pb-Zn <sup>++</sup> -Au
081	05H1081	TYERS	SHOWING	COPPER	Cu <sup>++</sup> -Ag Quartz Veins
082	05H1082	TUNA	SHOWING	MOLYBDENUM, TUNGSTEN	Porphyry Mo (Low F-Type)
084	05H1084	CHAP	SHOWING	ZINC	W Skarn
085	05H1085	BELANS	UNKNOWN		Unknown
086	05H1086	CERRO	SHOWING	COPPER, TUNGSTEN	W Skarn
087	05H1087	MIG	UNKNOWN	ZINC	Unknown
088	05H1088	BILLINGS	SHOWING	MOLYBDENUM, TUNGSTEN	W Skarn
089	05H1089	WJ	SHOWING	LEAD, ZINC	Pb-Zn Skarn
090	05H1090	WE	SHOWING	LEAD, TUNGSTEN, ZINC	W Skarn
091	05H1091	PINK	SHOWING	COPPER	Cu Skarn
092	05H1092	SIHAN	SHOWING	LEAD, TUNGSTEN, ZINC	Pb-Zn Skarn
093	05H1093	SEBASTIAN	SHOWING	LEAD, TUNGSTEN, ZINC	Pb-Zn Skarn
094	05H1094	MT BILLINGS	SHOWING	LEAD, TUNGSTEN, ZINC	Pb-Zn Skarn
095	05H1095	COME	SHOWING	ZINC	Sedimentary Exhalative Zn-Pb-Ag (Sedex)
096	05H1096	MCPHERSON	SHOWING	LEAD, SILVER, ZINC	Pb-Zn Skarn
097	05H1097	TUS	SHOWING	MOLYBDENUM	Porphyry Mo (Low F-Type)
098	05H1098	ANDERSON	SHOWING	TUNGSTEN	W Skarn
099	05H1099	BROTEN	SHOWING	TUNGSTEN	W Skarn
100	05H1100	MINI	SHOWING	TUNGSTEN	W Skarn
101	05H1101	BRENDA	UNKNOWN		Unknown
102	05H1102	FER	SHOWING	GOLD	Au-Quartz Veins
103	05H1103	SUGAR BOWL	SHOWING	GOLD	Au-Quartz Veins

Mineral Occurrences extracted from:  
DeLoraine, R. and Trapp, S. (compilers)  
2009. Yukon MINFILE 2007 - A database of mineral occurrences. Online at:  
[www.geology.gov.yk.ca/databases\\_gsc.html](http://www.geology.gov.yk.ca/databases_gsc.html)

Geology Legend

- Quaternary
  - Q silt/sand/gravel/sh
- mid-Cretaceous
  - mKS quartz monzonite/granodiorite/quartz diorite/ysenite/granite/quartz monzonite/granodiorite/dykes??
- Carboniferous and Permian
  - CPA basalt/diorite/gabbro/greenstone/argillite/siltstone/tuff/dunite/peridotite/serpentine/eclogite/orthogneiss/sandstone
- Late Devonian to Mississippian
  - DPM quartz monzonite
- Upper Devonian and Mississippian
  - DME siltstone/sandstone/conglo/barite/limestone
- Devonian, Mississippian and(?) older
  - DMN quartzite/gr-quartzite/qm-sm-cl-schist/conglo/grit
- Middle Silurian to Middle Devonian
  - SDM quartzite/limestone/dolostone
- Ordovician to Late Devonian
  - ODR shale/chert/siltstone/limestone/conglomerate
- Upper Cambrian and Ordovician
  - COR chert/siltstone/phyllite/limestone/conglo/flow/breccia/tuff/slate
- Lower Cambrian
  - ICG mudstone/shale/siltstone/phyllite/schist/chert/sandstone/conglo/limestone
- Lower Cambrian
  - ICS siltstone/quartzite/conglo/dolostone/limestone
- Upper Proterozoic to Lower Cambrian
  - UPCV phyllite/slate/argillite/siltstone/sandstone/quartzite
- Upper Proterozoic to Lower Cambrian
  - UPCH phyllite/shale/sandstone/grit/conglomerate/limestone/marble
- Proterozoic and Palaeozoic
  - PPa cl-bi-schist/amphibolite/b-gneiss/ae-pg-cl-bi-schist/pg-ac-cl-schist/phyllite/quartzite/ultramafics

Geology base clipped from:  
Gardley, S.P. and Makopoue, A.J. (comp.) 1996.  
Yukon bedrock geology in Yukon digital geology, S.P. Gardley and A.J. Makopoue (comp.).  
Geological Survey of Canada Open File 6282 and Exploration and Geological Services Division,  
Yukon, Indian and Northern Affairs Canada, Open File 1999-1(D)



OPEN FILE  
DOSSIER PUBLIC  
6043  
2009

Recommended citation:  
McCurdy, M.W., Day, S.J.A., Friske, P.W.B., McNeil, R.J., Hornbrook, E.H.W.  
2009. Regional Stream Sediment and Water Geochemical Data, Frances Lake area, southeastern Yukon (NTS 105H) Geological Survey of Canada, Open File 6043 -  
Yukon Geological Survey Open File 2009-1  
1CD-ROM.

