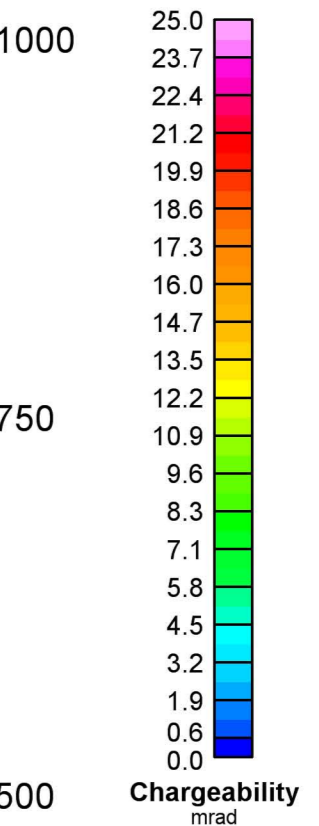
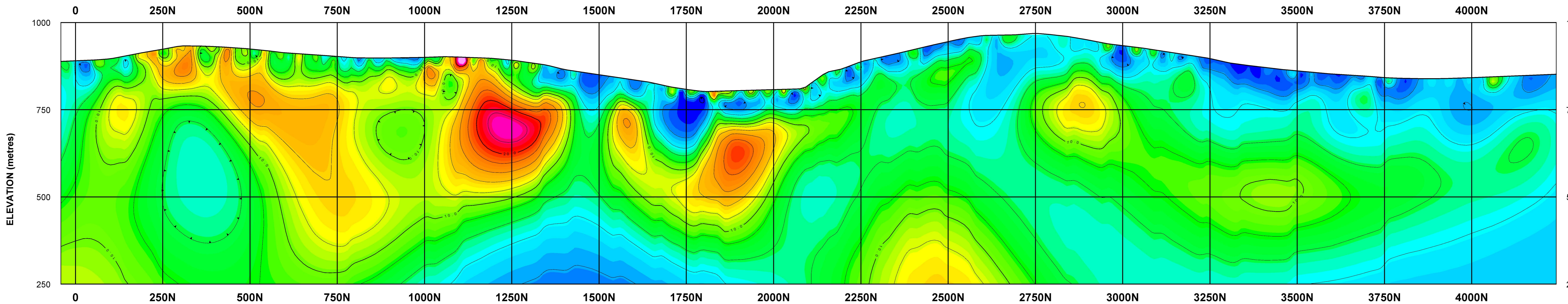


LINE 1 - Smooth IP Chargeability from Resistive Half-space (null conductivity) Reference



SURVEY SPECIFICATIONS:

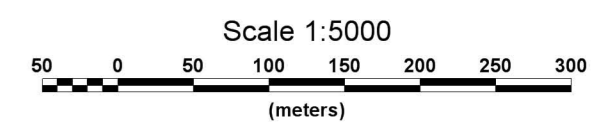
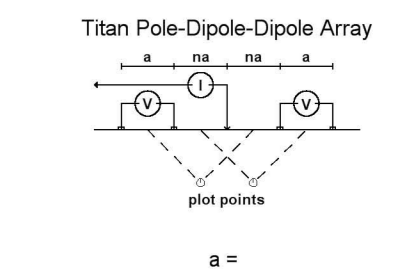
Quantec TITAN-24 Distributed Array System
 Coordinate System: Array Coordinates
 Dipole Spacing: Array: Pole-dipole
 Operators: J. Violette & K. Mokubung
 Transmitter: GDD Tx II (4.8kW)

PROCESSING HISTORY:

Data Acquisition: Full Waveform Sampling (240 samples/s)
 Time-Series Processing: Robust Statistics
 Processing Platform: QGI Quicklay(tm)
 Inversion: Unconstrained Smooth Null Con UBC 2D IP
 UBC Model misfit: Converges to Npts, Max 100 iters

PLOTTING PARAMETERS:

Grid Cell Size: 10 metres
 Gridding: Minimum Curvature Gridding
 Filter Applied: 0X Hanning Filter
 Contours: Linear (2 & 10 mrad)
 Colour Zoning: Equal Area (Colour.tbl)



Capstone Mining Corp.

Minto Mine
 Yukon, Canada

LINE 1

TITAN-24 ARRAY DC RESISTIVITY / IP SURVEY
 Smooth IP Chargeability from Resistive Half-space (null conductivity) Reference

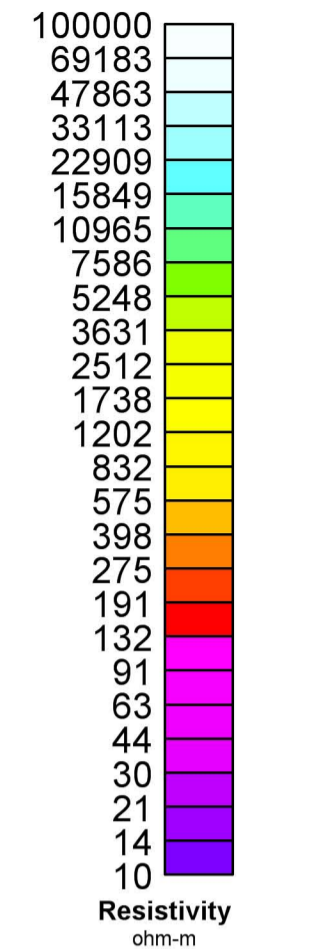
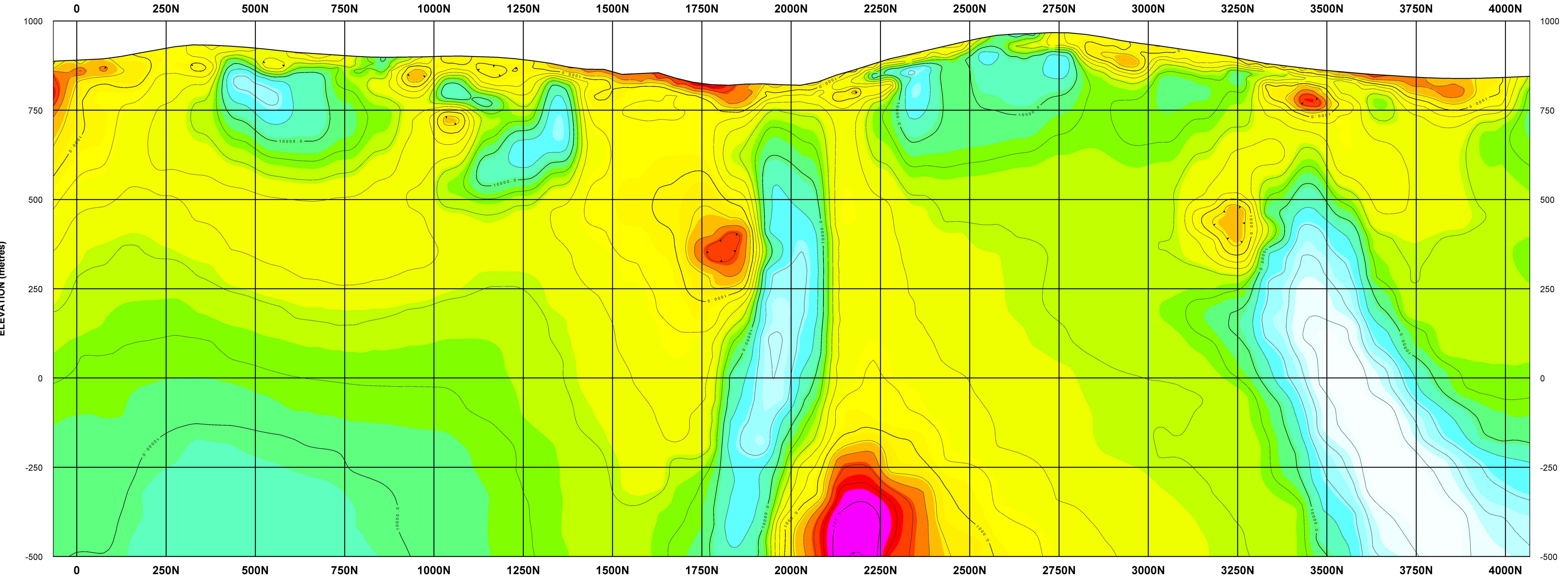


Surveyed & Processed by:
 Quantec Geoscience Ltd.
 116 Spadina Ave, Suite 400
 Toronto, ON M5V 2K6

Date: July 2009 Project Ref. #: CA00656T Approved by: AV



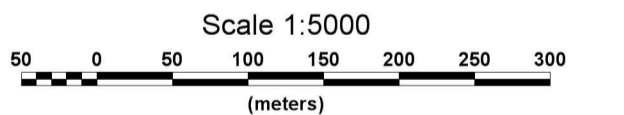
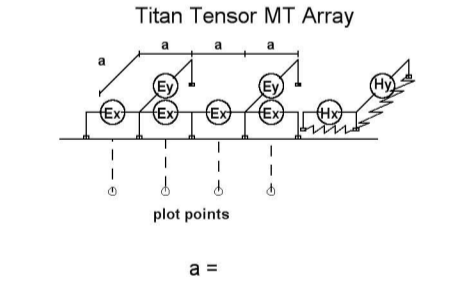
LINE 1 - Smooth Unrotated PW TMTE Inversion from a 5000 ohm-m Resistive Half-space



SURVEY SPECIFICATIONS:
 QCI TITAN-24 Distributed Array+Remote-Reference
 Coordinate System: Array Coordinates
 Dipole Spacing: Array: Tensor AMT
 Operators: J. Violette & K. Mokubung

PROCESSING HISTORY:
 Data Acquisition: Time Series Sampling (48k+9600+120Hz)
 Time-Series Processing: Robust Statistics
 Processing Platform: Geotools(tm)
 Inversion: Unconstrained Unrotated Smooth PW TMTE
 Geotools Model rms misfit: Max5-10pct, Max50 iters

PLOTTING PARAMETERS:
 Grid Cell Size: 10 metres
 Gridding: Minimum Curvature Gridding
 Filter Applied: 0X Hanning Filter
 Contours: Logarithmic (5 levels/dec)
 Colour Zoning: Equal Area (Resis.tbl)



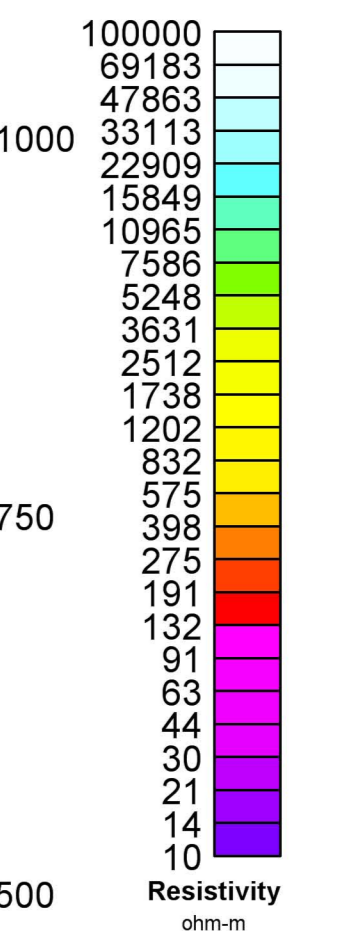
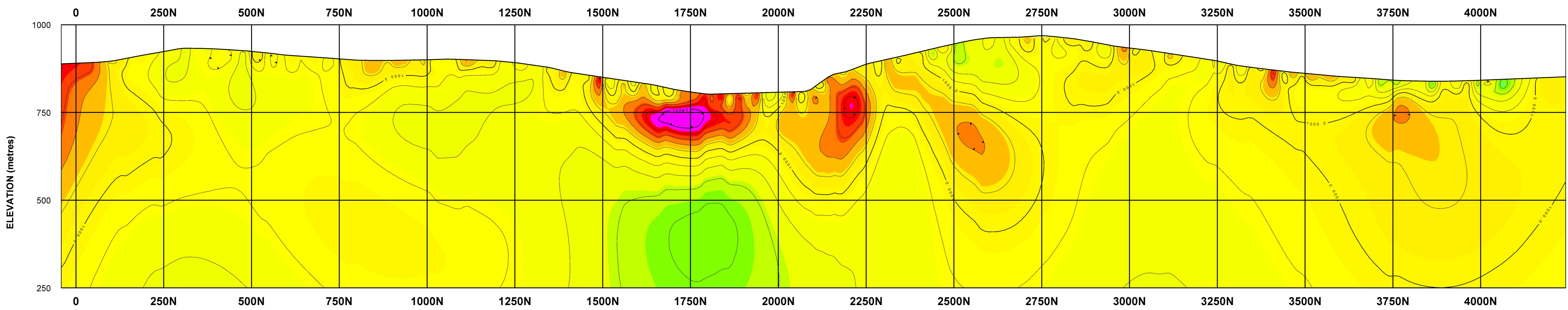
Capstone Mining Corp.
Minto Mine
 Yukon, Canada
LINE 1
 TITAN-24 ARRAY MAGNETOTELLURIC SURVEY
 Smooth Unrotated PW TMTE Inversion from a 5000 ohm-m Resistive Half-space

Surveyed & Processed by:
Quantec Geoscience
 116 Spadina Ave, Suite 400
 Toronto, ON M5V 2K6

Date: July 2009
 Project Ref. #: CA00656T
 Approved by: AV



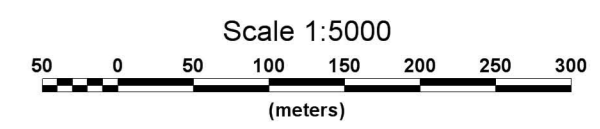
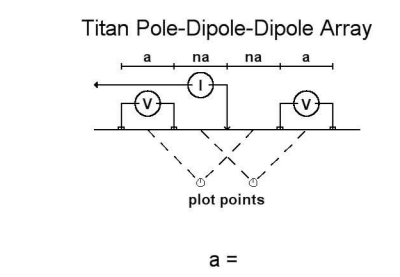
LINE 1 - Smooth DC Resistivity



SURVEY SPECIFICATIONS:
 Quantec TITAN-24 Distributed Array System
 Coordinate System: Array Coordinates
 Dipole Spacing: Array: Pole-dipole
 Operators: J. Violette & K. Mokubung
 Transmitter: GDD Tx II (4.8kW)

PROCESSING HISTORY:
 Data Acquisition: Full Waveform Sampling (240 samples/s)
 Time-Series Processing: Robust Statistics
 Processing Platform: QGI Quicklay(tm)
 Inversion: Unconstrained Smooth UBC 2D DC
 UBC Model misfit: Converges to Npts, Max 100 iters

PLOTTING PARAMETERS:
 Grid Cell Size: 10 metres
 Gridding: Minimum Curvature Gridding
 Filter Applied: 0X Hanning Filter
 Contours: Logarithmic (5 levels/dec)
 Colour Zoning: Equal Area (Resis.tbl)



Capstone Mining Corp.

Minto Mine
 Yukon, Canada

LINE 1

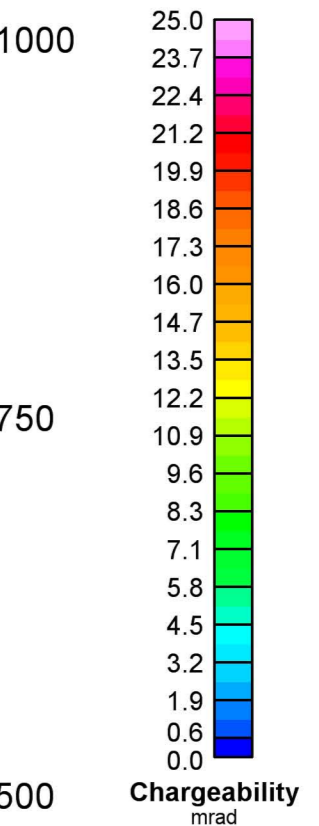
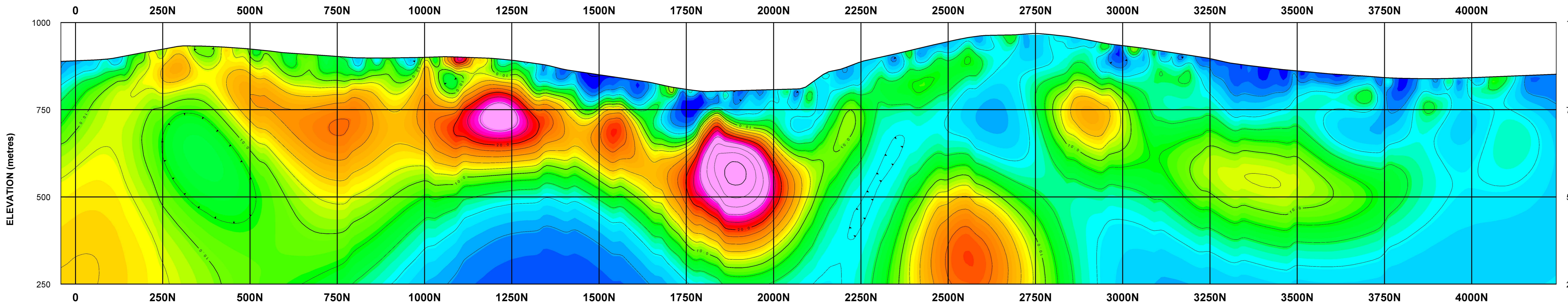
TITAN-24 ARRAY DC RESISTIVITY / IP SURVEY

Smooth DC Resistivity


Surveyed & Processed by:
 Quantec Geoscience Ltd.
 116 Spadina Ave, Suite 400
 Toronto, ON M5V 2K6



LINE 1 - Smooth IP Chargeability from DC Resistivity Reference



SURVEY SPECIFICATIONS:

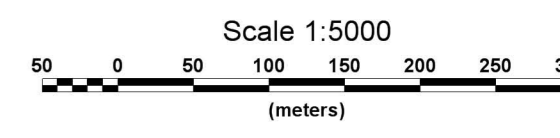
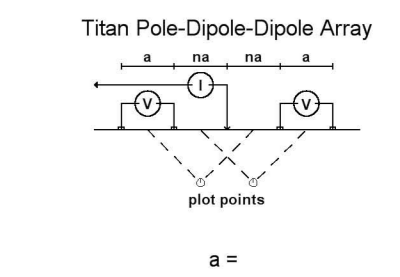
Quantec TITAN-24 Distributed Array System
 Coordinate System: Array Coordinates
 Dipole Spacing: Array: Pole-dipole
 Operators: J. Violette & K. Mokubung
 Transmitter: GDD Tx II (4.8kW)

PROCESSING HISTORY:

Data Acquisition: Full Waveform Sampling (240 samples/s)
 Time-Series Processing: Robust Statistics
 Processing Platform: QGI Quicklay(tm)
 Inversion: Unconstrained Smooth UBC 2D IP
 UBC Model misfit: Converges to Npts, Max 100 iters

PLOTTING PARAMETERS:

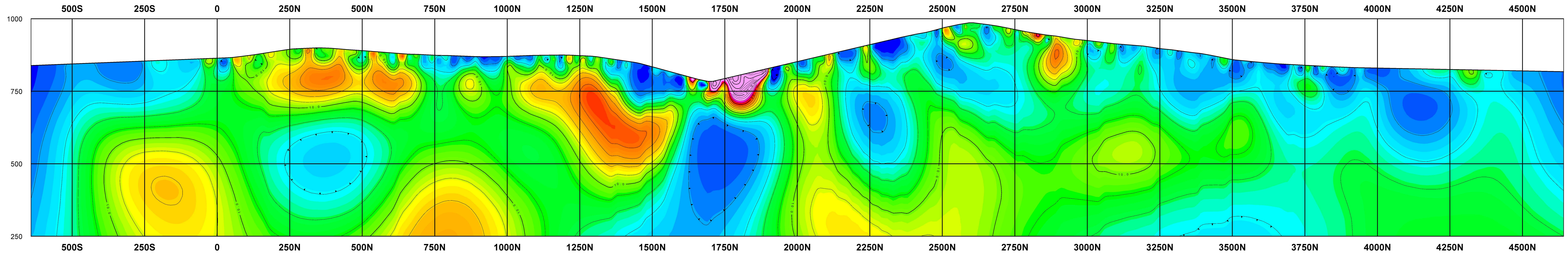
Grid Cell Size: 10 metres
 Gridding: Minimum Curvature Gridding
 Filter Applied: 0X Hanning Filter
 Contours: Linear (2 & 10 mrad)
 Colour Zoning: Equal Area (Colour.tbl)



| | | |
|---|--------------------------|--|
| Capstone Mining Corp. | | |
| Minto Mine Yukon, Canada | | |
| LINE 1 | | |
| TITAN-24 ARRAY DC RESISTIVITY / IP SURVEY | | |
| Smooth IP Chargeability from DC Resistivity Reference | | |
| | | Surveyed & Processed by: Quantec Geoscience Ltd. 116 Spadina Ave, Suite 400 Toronto, ON M5V 2K6 |
| Date: July 2009 | Project Ref. #: CA00656T | Approved by: AV |



LINE 2 - Smooth IP Chargeability from Resistive Half-space (null conductivity) Reference



SURVEY SPECIFICATIONS:
 Quantec TITAN-24 Distributed Array System
 Coordinate System: Array Coordinates
 Dipole Spacing: Array: Pole-dipole
 Operators: J. Violette & K. Mokubung
 Transmitter: GDD Tx II (4.8kW)

PROCESSING HISTORY:
 Data Acquisition: Full Waveform Sampling (240 samples/s)
 Time-Series Processing: Robust Statistics
 Processing Platform: QGI Quicklay(tm)
 Inversion: Unconstrained Smooth Null Con UBC 2D IP
 UBC Model misfit: Converges to Npts, Max 100 iters

PLOTTING PARAMETERS:
 Grid Cell Size: 10 metres
 Gridding: Minimum Curvature Gridding
 Filter Applied: 0X Hanning Filter
 Contours: Linear (2 & 10 mrad)
 Colour Zoning: Equal Area (Colour.tbl)

Titan Pole-Dipole-Dipole Array

 a =
 Scale 1:5000

Capstone Mining Corp.

Minto Mine
 Yukon, Canada

LINE 2

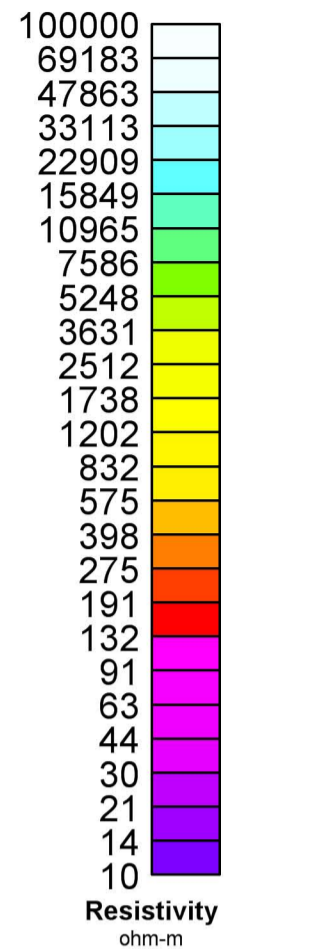
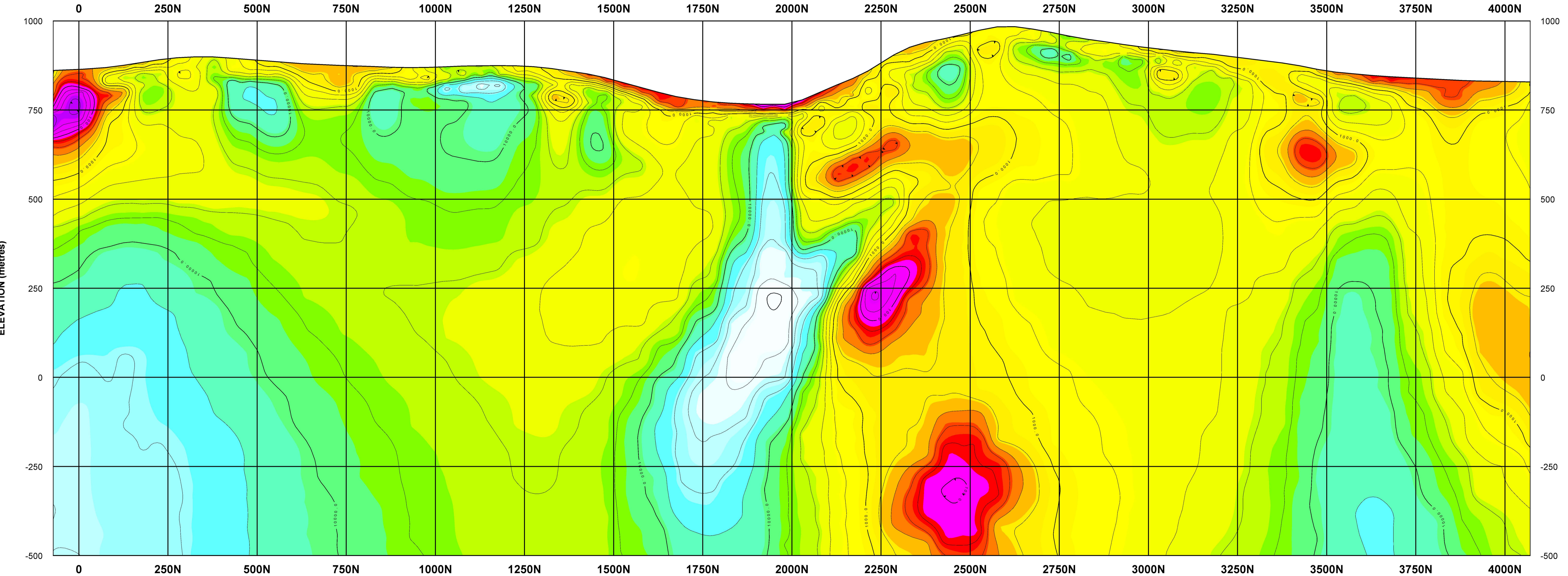
TITAN-24 ARRAY DC RESISTIVITY / IP SURVEY
 Smooth IP Chargeability from Resistive Half-space (null conductivity) Reference

Surveyed & Processed by:
Quantec Geoscience Ltd.
 116 Spadina Ave, Suite 400
 Toronto, ON M5V 2K6

Date: July 2009 Project Ref. #: CA00656T Approved by: AV



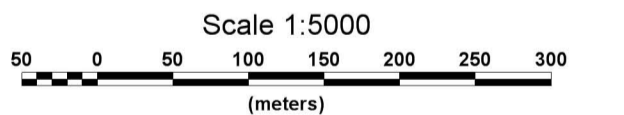
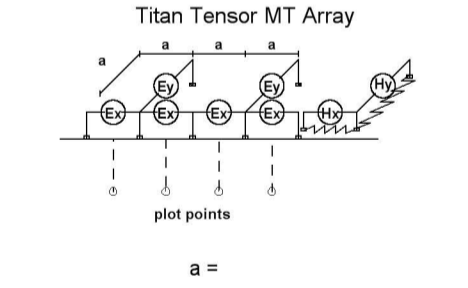
LINE 2 - Smooth Unrotated PW TMTE Inversion from a 5000 ohm-m Resistive Half-space



SURVEY SPECIFICATIONS:
 QCI TITAN-24 Distributed Array+Remote-Reference
 Coordinate System: Array Coordinates
 Dipole Spacing: Array: Tensor AMT
 Operators: J. Violette & K. Mokubung

PROCESSING HISTORY:
 Data Acquisition: Time Series Sampling (48k+9600+120Hz)
 Time-Series Processing: Robust Statistics
 Processing Platform: Geotools(tm)
 Inversion: Unconstrained Unrotated Smooth PW TMTE
 Geotools Model rms misfit: Max5-10pct, Max50 iters

PLOTTING PARAMETERS:
 Grid Cell Size: 10 metres
 Gridding: Minimum Curvature Gridding
 Filter Applied: 0X Hanning Filter
 Contours: Logarithmic (5 levels/dec)
 Colour Zoning: Equal Area (Resis.tbl)



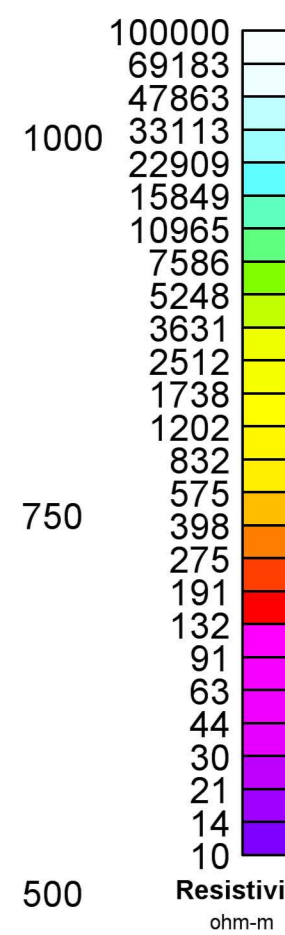
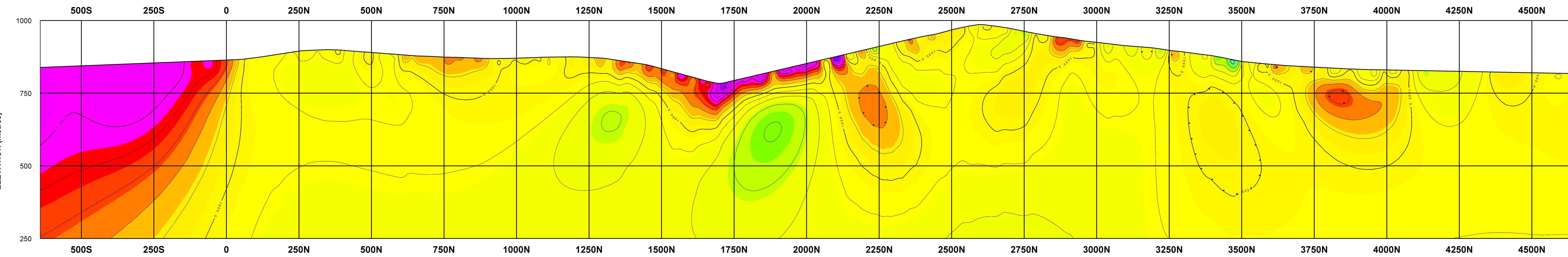
Capstone Mining Corp.
 Minto Mine
 Yukon, Canada
LINE 2
 TITAN-24 ARRAY MAGNETOTELLURIC SURVEY
 Smooth Unrotated PW TMTE Inversion from a 5000 ohm-m Resistive Half-space

Surveyed & Processed by:
Quantec Geoscience
 116 Spadina Ave, Suite 400
 Toronto, ON M5V 2K6

Date: July 2009 Project Ref. #: CA00656T Approved by: AV



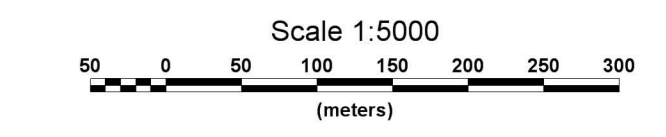
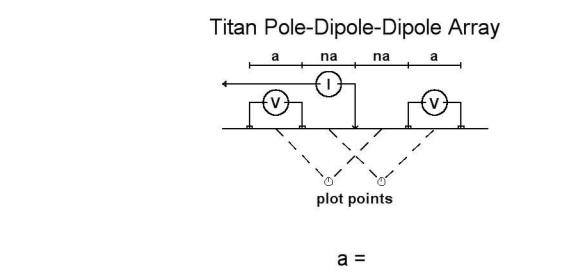
LINE 2 - Smooth DC Resistivity



SURVEY SPECIFICATIONS:
 Quantec TITAN-24 Distributed Array System
 Coordinate System: Array Coordinates
 Dipole Spacing: Array: Pole-dipole
 Operators: J. Violette & K. Mokubung
 Transmitter: GDD Tx II (4.8kW)

PROCESSING HISTORY:
 Data Acquisition: Full Waveform Sampling (240 samples/s)
 Time-Series Processing: Robust Statistics
 Processing Platform: QGI Quicklay(tm)
 Inversion: Unconstrained Smooth UBC 2D DC
 UBC Model misfit: Converges to Npts, Max 100 iters

PLOTTING PARAMETERS:
 Grid Cell Size: 10 metres
 Gridding: Minimum Curvature Gridding
 Filter Applied: 0X Hanning Filter
 Contours: Logarithmic (5 levels/dec)
 Colour Zoning: Equal Area (Resis.tb)



Capstone Mining Corp.

Minto Mine
 Yukon, Canada

LINE 2

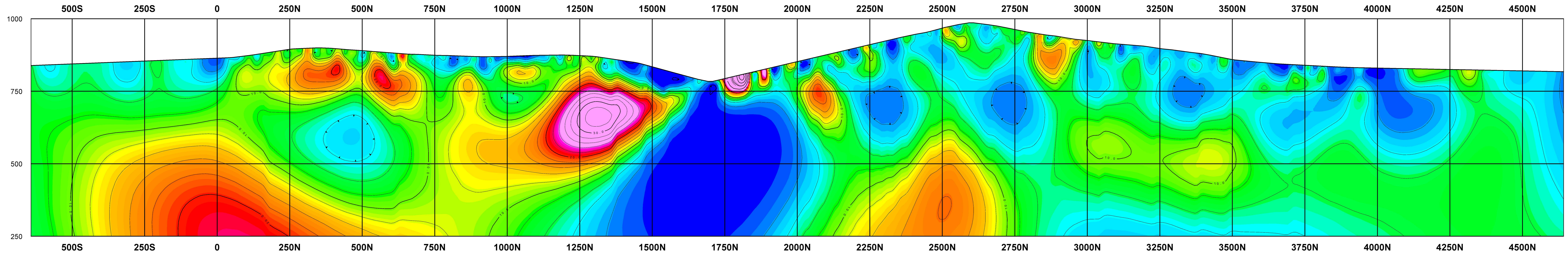
TITAN-24 ARRAY DC RESISTIVITY / IP SURVEY
 Smooth DC Resistivity

Surveyed & Processed by:
Quantec Geoscience Ltd.
 116 Spadina Ave, Suite 400
 Toronto, ON M5V 2K6



Map Generated by Timothy Eadie

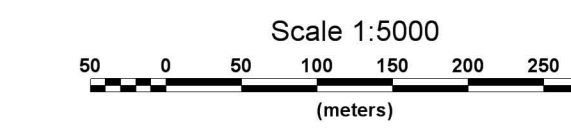
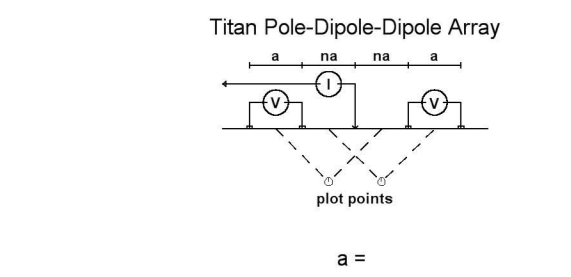
LINE 2 - Smooth IP Chargeability from DC Resistivity Reference



SURVEY SPECIFICATIONS:
 Quantec TITAN-24 Distributed Array System
 Coordinate System: Array Coordinates
 Dipole Spacing: Array: Pole-dipole
 Operators: J. Violette & K. Mokubung
 Transmitter: GDD Tx II (4.8kW)

PROCESSING HISTORY:
 Data Acquisition: Full Waveform Sampling (240 samples/s)
 Time-Series Processing: Robust Statistics
 Processing Platform: QGI Quicklay(tm)
 Inversion: Unconstrained Smooth UBC 2D IP
 UBC Model misfit: Converges to Npts, Max 100 iters

PLOTTING PARAMETERS:
 Grid Cell Size: 10 metres
 Gridding: Minimum Curvature Gridding
 Filter Applied: 0X Hanning Filter
 Contours: Linear (2 & 10 mrad)
 Colour Zoning: Equal Area (Colour.tbl)



Capstone Mining Corp.

Minto Mine
 Yukon, Canada

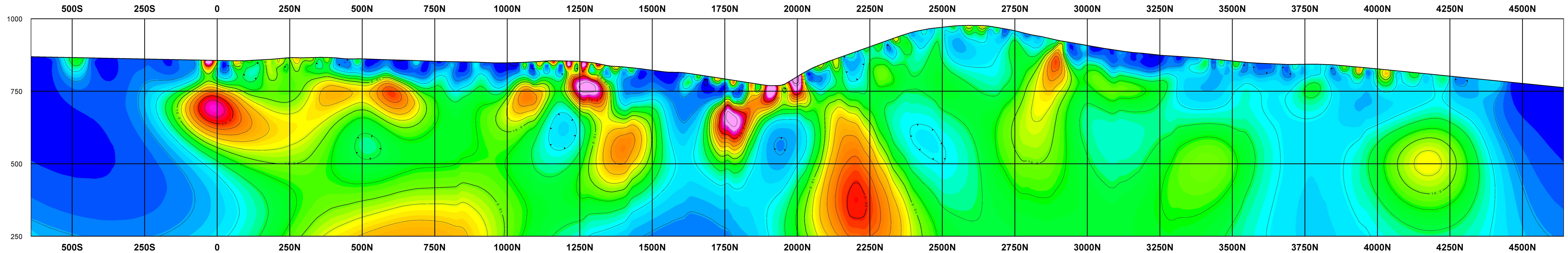
LINE 2

TITAN-24 ARRAY DC RESISTIVITY / IP SURVEY
 Smooth IP Chargeability from DC Resistivity Reference

Surveyed & Processed by:
Quantec Geoscience Ltd.
 116 Spadina Ave, Suite 400
 Toronto, ON M5V 2K6



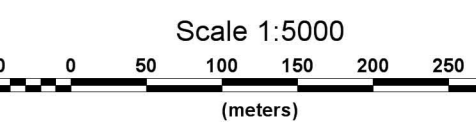
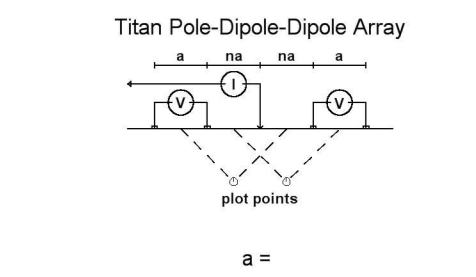
LINE 3 - Smooth IP Chargeability from Resistive Half-space (null conductivity) Reference



SURVEY SPECIFICATIONS:
 Quantec TITAN-24 Distributed Array System
 Coordinate System: Array Coordinates
 Dipole Spacing: Array: Pole-dipole
 Operators: J. Violette & K. Mokubung
 Transmitter: GDD Tx II (4.8kW)

PROCESSING HISTORY:
 Data Acquisition: Full Waveform Sampling (240 samples/s)
 Time-Series Processing: Robust Statistics
 Processing Platform: QGI Quicklay(tm)
 Inversion: Unconstrained Smooth Null Con UBC 2D IP
 UBC Model misfit: Converges to Npts, Max 100 iters

PLOTTING PARAMETERS:
 Grid Cell Size: 10 metres
 Gridding: Minimum Curvature Gridding
 Filter Applied: 0X Hanning Filter
 Contours: Linear (2 & 10 mrad)
 Colour Zoning: Equal Area (Colour.tbl)



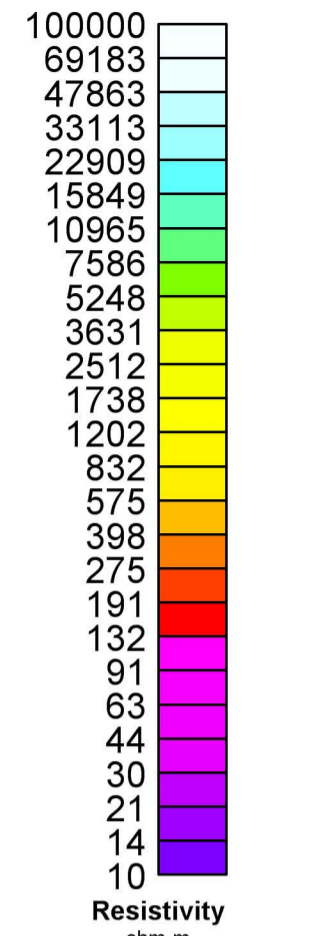
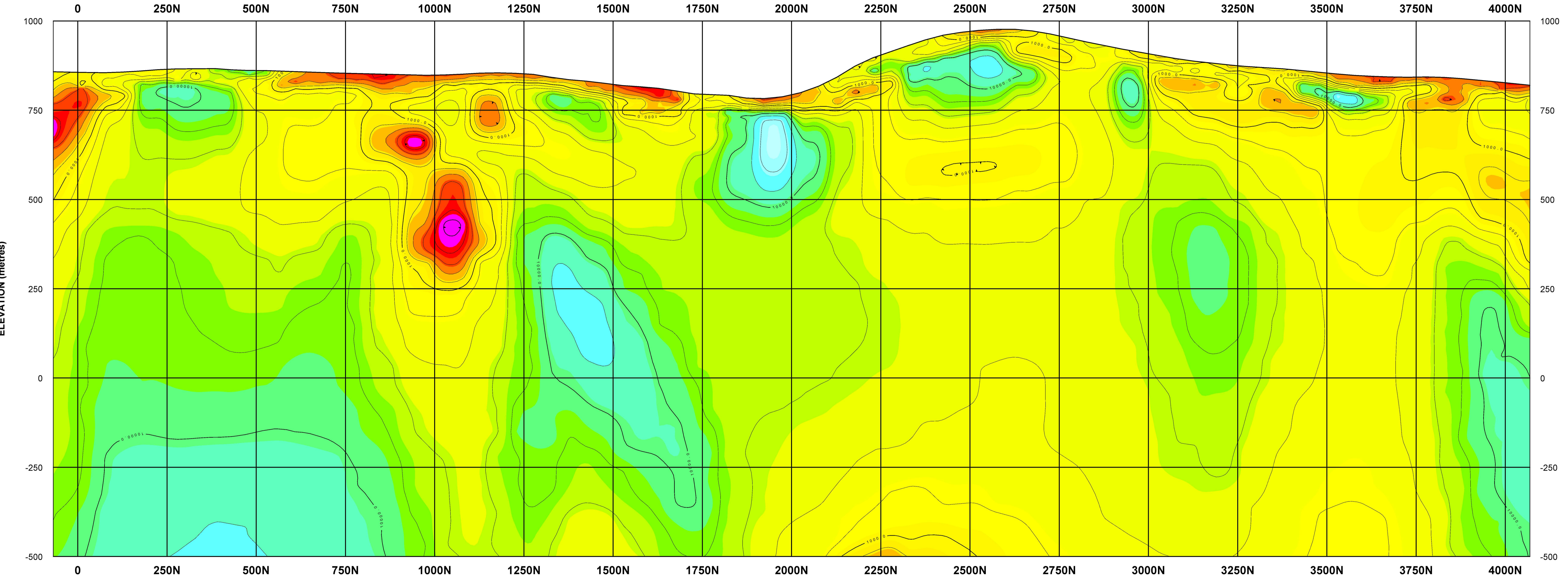
| | | |
|---|--------------------------|--|
| Capstone Mining Corp. | | |
| Minto Mine Yukon, Canada | | |
| LINE 3 | | |
| TITAN-24 ARRAY DC RESISTIVITY / IP SURVEY | | |
| Smooth IP Chargeability from Resistive Half-space (null conductivity) Reference | | |
| | | Surveyed & Processed by: Quantec Geoscience Ltd. 116 Spadina Ave, Suite 400 Toronto, ON M5V 2K6 |
| Date: July 2009 | Project Ref. #: CA00656T | Approved by: AV |



Map Generated by Timothy Eadie

DWG. #: CA00656T-DCIP-PLDP-INV-UBC_2DRESIP-IP-3

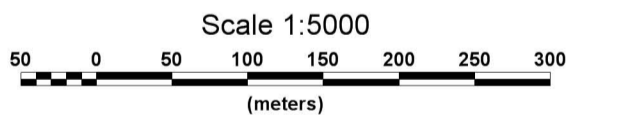
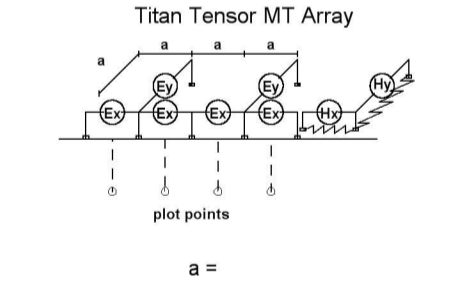
LINE 3 - Smooth Unrotated PW TMTE Inversion from a 5000 ohm-m Resistive Half-space



SURVEY SPECIFICATIONS:
 QCI TITAN-24 Distributed Array+Remote-Reference
 Coordinate System: Array Coordinates
 Dipole Spacing: Array: Tensor AMT
 Operators: J. Violette & K. Mokubung

PROCESSING HISTORY:
 Data Acquisition: Time Series Sampling (48k+9600+120Hz)
 Time-Series Processing: Robust Statistics
 Processing Platform: Geotools(tm)
 Inversion: Unconstrained Unrotated Smooth PW TMTE
 Geotools Model rms misfit: Max5-10pct, Max50 iters

PLOTTING PARAMETERS:
 Grid Cell Size: 10 metres
 Gridding: Minimum Curvature Gridding
 Filter Applied: 0X Hanning Filter
 Contours: Logarithmic (5 levels/dec)
 Colour Zoning: Equal Area (Resis.tbl)



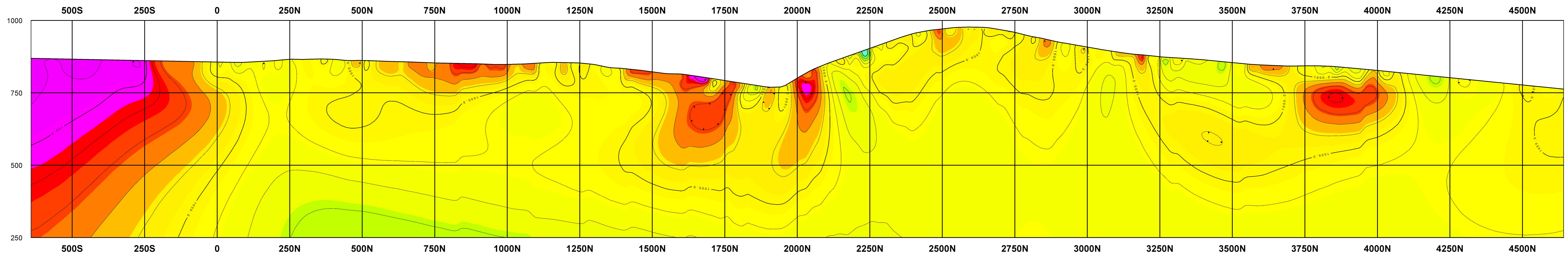
Capstone Mining Corp.
Minto Mine
 Yukon, Canada
LINE 3
 TITAN-24 ARRAY MAGNETOTELLURIC SURVEY
 Smooth Unrotated PW TMTE Inversion from a 5000 ohm-m Resistive Half-space

Surveyed & Processed by:
Quantec Geoscience Ltd.
 116 Spadina Ave, Suite 400
 Toronto, ON M5V 2K6

Date: July 2009 Project Ref. #: CA00656T Approved by: AV



LINE 3 - Smooth DC Resistivity



SURVEY SPECIFICATIONS:
 Quantec TITAN-24 Distributed Array System
 Coordinate System: Array Coordinates
 Dipole Spacing: Array: Pole-dipole
 Operators: J. Violette & K. Mokubung
 Transmitter: GDD Tx II (4.8kW)

PROCESSING HISTORY:
 Data Acquisition: Full Waveform Sampling (240 samples/s)
 Time-Series Processing: Robust Statistics
 Processing Platform: QGI Quicklay(tm)
 Inversion: Unconstrained Smooth UBC 2D DC
 UBC Model misfit: Converges to Npts, Max 100 iters

PLOTTING PARAMETERS:
 Grid Cell Size: 10 metres
 Gridding: Minimum Curvature Gridding
 Filter Applied: 0X Hanning Filter
 Contours: Logarithmic (5 levels/dec)
 Colour Zoning: Equal Area (Resis.tb)

Titan Pole-Dipole-Dipole Array

Scale 1:5000
 (meters)

Capstone Mining Corp.

Minto Mine
 Yukon, Canada

LINE 3

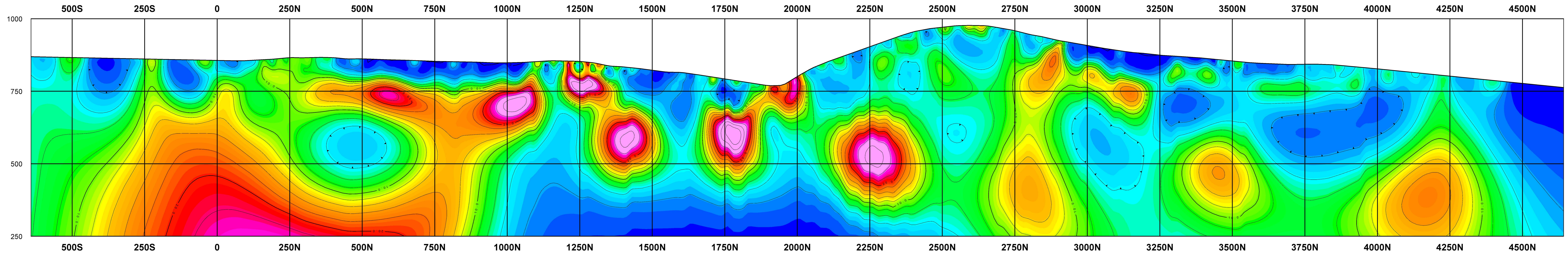
TITAN-24 ARRAY DC RESISTIVITY / IP SURVEY
 Smooth DC Resistivity

Surveyed & Processed by:
Quantec Geoscience Ltd.
 116 Spadina Ave, Suite 400
 Toronto, ON M5V 2K6

Date: July 2009 Project Ref. #: CA00656T Approved by: AV



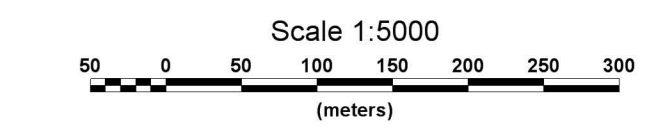
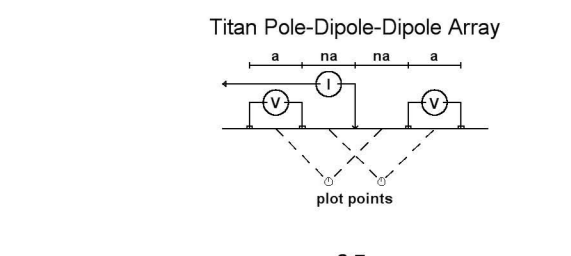
LINE 3 - Smooth IP Chargeability from DC Resistivity Reference



SURVEY SPECIFICATIONS:
 Quantec TITAN-24 Distributed Array System
 Coordinate System: Array Coordinates
 Dipole Spacing: Array: Pole-dipole
 Operators: J. Violette & K. Mokubung
 Transmitter: GDD Tx II (4.8kW)

PROCESSING HISTORY:
 Data Acquisition: Full Waveform Sampling (240 samples/s)
 Time-Series Processing: Robust Statistics
 Processing Platform: QGI Quicklay(tm)
 Inversion: Unconstrained Smooth UBC 2D IP
 UBC Model misfit: Converges to Npts, Max 100 iters

PLOTTING PARAMETERS:
 Grid Cell Size: 10 metres
 Gridding: Minimum Curvature Gridding
 Filter Applied: 0X Hanning Filter
 Contours: Linear (2 & 10 mrad)
 Colour Zoning: Equal Area (Colour.tbl)



Capstone Mining Corp.

Minto Mine
 Yukon, Canada

LINE 3

TITAN-24 ARRAY DC RESISTIVITY / IP SURVEY
 Smooth IP Chargeability from DC Resistivity Reference

Surveyed & Processed by:
Quantec Geoscience Ltd.
 116 Spadina Ave, Suite 400
 Toronto, ON M5V 2K6



Map Generated by Timothy Eadie