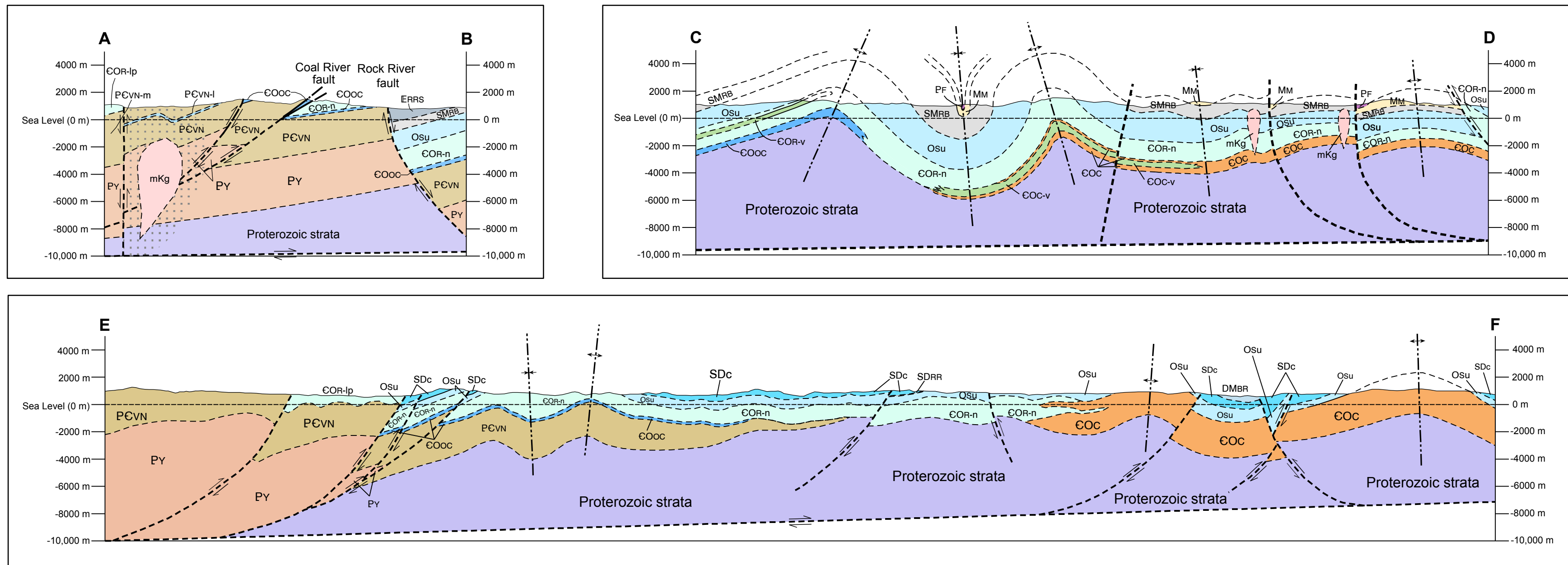




LEGEND

LAYERED ROCKS



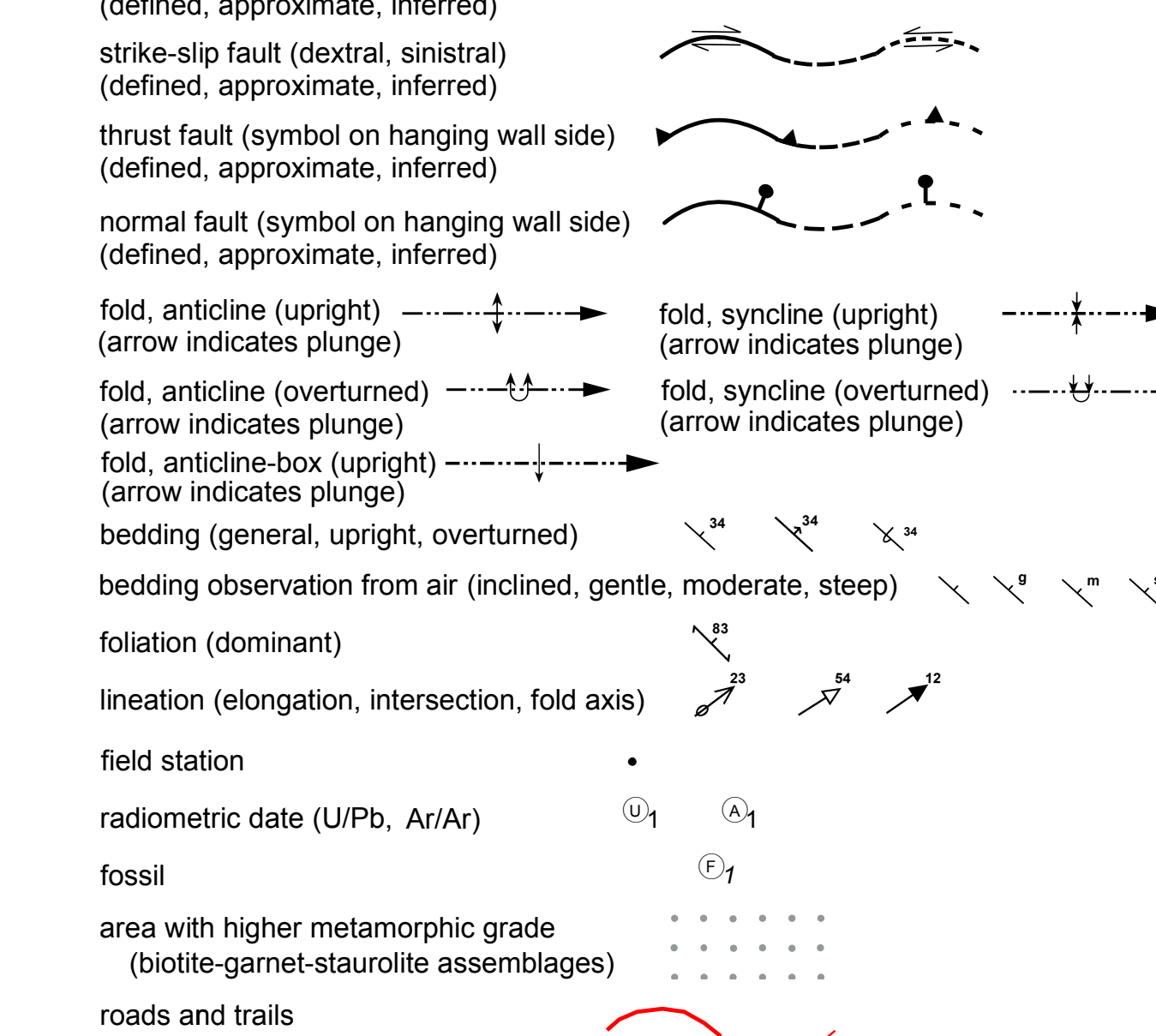
- EOCENE: ERRS (Rock River coal basin sediments)
PALEOCENE: Psc (pale tan to grey, poorly indurated siltstone, sandstone and conglomerate)
TRIASSIC: TGT (Graying-Toad formations)
PERMIAN: Fantasma Formation (dark grey to black, brown-weathering, siliceous, bedded shale)
MISSISSIPPIAN: Mattson Formation (pale grey, grey-weathering, strongly indurated, fine-grained, quartzose sandstone)
DEVONIAN TO MISSISSIPPIAN: Besa River Formation (dark grey to black, pale bluish grey-weathering, recessive shale)
SILURIAN TO MISSISSIPPIAN: Road River Group-Besa River Formation (dark grey to black, pale grey-weathering, locally calcareous or dolomitic)
SILURIAN TO DEVONIAN: Nonda-Muncho-McConnell-Stone-Dunedin formations (grey to buff, quartzose sandstone to pebbly sandstone)
ORDOVICIAN TO SILURIAN: Sunblood Formation (light to dark grey, light brownish grey, buff or orange-weathering)
ORDOVICIAN: Osu (light to dark grey, light brownish grey, buff or orange-weathering)
ORDOVICIAN: Osu-v (greyish green to green, grey-weathering)
CAMBRIAN TO ORDOVICIAN: Rabbitkettle Formation (east faces - grey to brownish grey-weathering)
CROW FORMATION: cream to pink, indistinctly bedded, quartzite to subarkosic sandstone

- CAMBRIAN: Cs (pale green to tan, brown-weathering, laminated, locally calcareous)
NEOPROTEROZOIC TO CAMBRIAN: Hyland Group and equivalents (dark grey to pale green, rusty tan-weathering)
INTRUSIVE ROCKS: mKq (medium to dark grey, medium-grained, equigranular to porphyritic)

- NEOPROTEROZOIC: Hyland Group, Yuseyu Formation (interbedded cream, grey-weathering, noncalcareous)
Toobally Formation (dark grey to black, orange-brown-weathering, polymictic)

- INTRUSIVE ROCKS: mKq (medium to dark grey, medium-grained, equigranular to porphyritic)

- SYMBOLS: geologic contact, fault, strike-slip fault, thrust fault, normal fault, fold, bedding observation, foliation, lineation, field station, radiometric date, fossil, area with higher metamorphic grade, roads and trails



REFERENCES

- 1. Gabrielse, H. and Blussion, S., 1969. Geological Survey of Canada, Paper 68-38, 22 p.
2. Main, C.A. and Cathro, R.J., 1982. Yukon Mineral Assessment Report #091021
3. Abbott, J.G., 1981. Yukon Exploration and Geology, 1979-80, p. 51-54
4. Stammers, M., 1983. NWT Mineral Assessment Report #081665
5. Main, C.A. and Cathro, R.J., 1982. Yukon Mineral Assessment Report #091019
6. Miller, D. C. and Harrison, J. C., 1981. Yukon Mineral Assessment Report #062104
7. Archer Cathro and Associates, 1979. Hyland Joint Venture. Unpublished map.
8. Archer, A.R., 1982. Yukon Mineral Assessment Report #091427
9. Jones, M.L., 1997. Yukon Mineral Assessment Report #093634
10. Livgard, E., 1995. Yukon Mineral Assessment Report #093635
11. Pigge, L.C., 2009. Yukon Geological Survey, Open File 2007-4
12. Pigge, L.C., 2009. Yukon Geological Survey, Bulletin 16

Table with columns: Map ID, Sample ID, Lab, Map Unit, Age, Isotopes, Method, Material, Age Intep, Reference. Lists various geological samples and their analytical data.

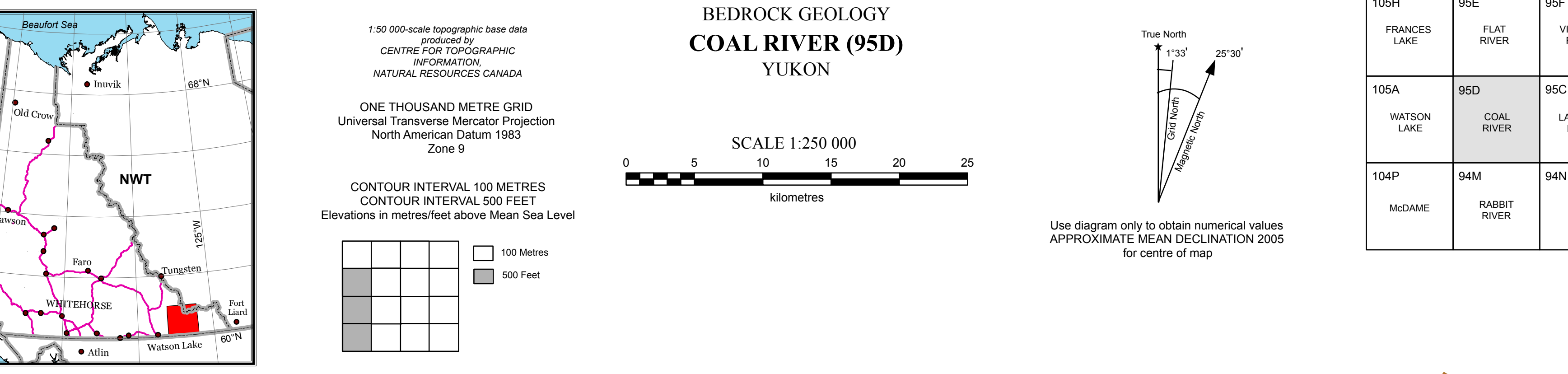
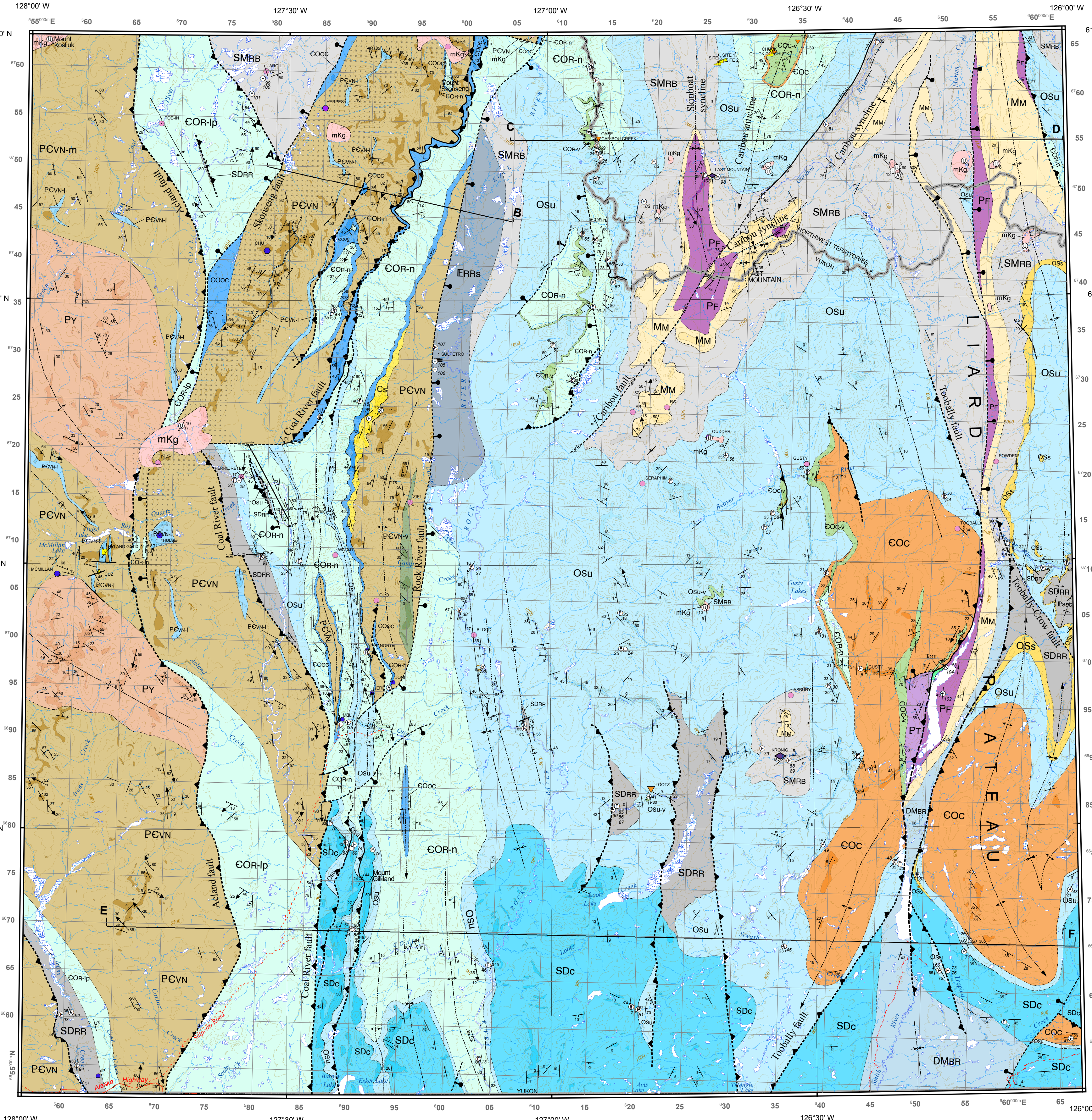


Table titled 'Yukon MINFILE Occurrences and NWT NORMIN Occurrences'. Columns include ID Number, Primary Name, Status, Primary Commodities, and Mineralization Type. Lists various mineral occurrences and their details.

Table titled 'Geochronology - NTS 95D'. Columns include Map-ID, Sample-ID, Lab, Map Unit, Age, Isotopes, Method, Material, Age Intep, Reference. Lists geochronological data for various samples.

ACKNOWLEDGEMENTS: This is a product of the Gold and base metals - southeast Yukon (Selwyn Basin) project funded jointly by the Geo-mapping for Energy and Minerals (GEM) program of Natural Resources Canada, and the Yukon Geological Survey (Government of Yukon).
RECOMMENDED CITATION: Pigge, L.C., Abbott, J.G. and Roots, C.F., 2011. Bedrock geology of Coal River map area (NTS 95D), Yukon (1:250 000-scale). Yukon Geological Survey, Open File 2011-1.
REFERENCES: 1. Gabrielse, H. and Blussion, S., 1969. Geological Survey of Canada, Paper 68-38, 22 p.
2. Main, C.A. and Cathro, R.J., 1982. Yukon Mineral Assessment Report #091021
3. Abbott, J.G., 1981. Yukon Exploration and Geology, 1979-80, p. 51-54
4. Stammers, M., 1983. NWT Mineral Assessment Report #081665
5. Main, C.A. and Cathro, R.J., 1982. Yukon Mineral Assessment Report #091019
6. Miller, D. C. and Harrison, J. C., 1981. Yukon Mineral Assessment Report #062104
7. Archer Cathro and Associates, 1979. Hyland Joint Venture. Unpublished map.
8. Archer, A.R., 1982. Yukon Mineral Assessment Report #091427
9. Jones, M.L., 1997. Yukon Mineral Assessment Report #093634
10. Livgard, E., 1995. Yukon Mineral Assessment Report #093635
11. Pigge, L.C., 2009. Yukon Geological Survey, Open File 2007-4
12. Pigge, L.C., 2009. Yukon Geological Survey, Bulletin 16