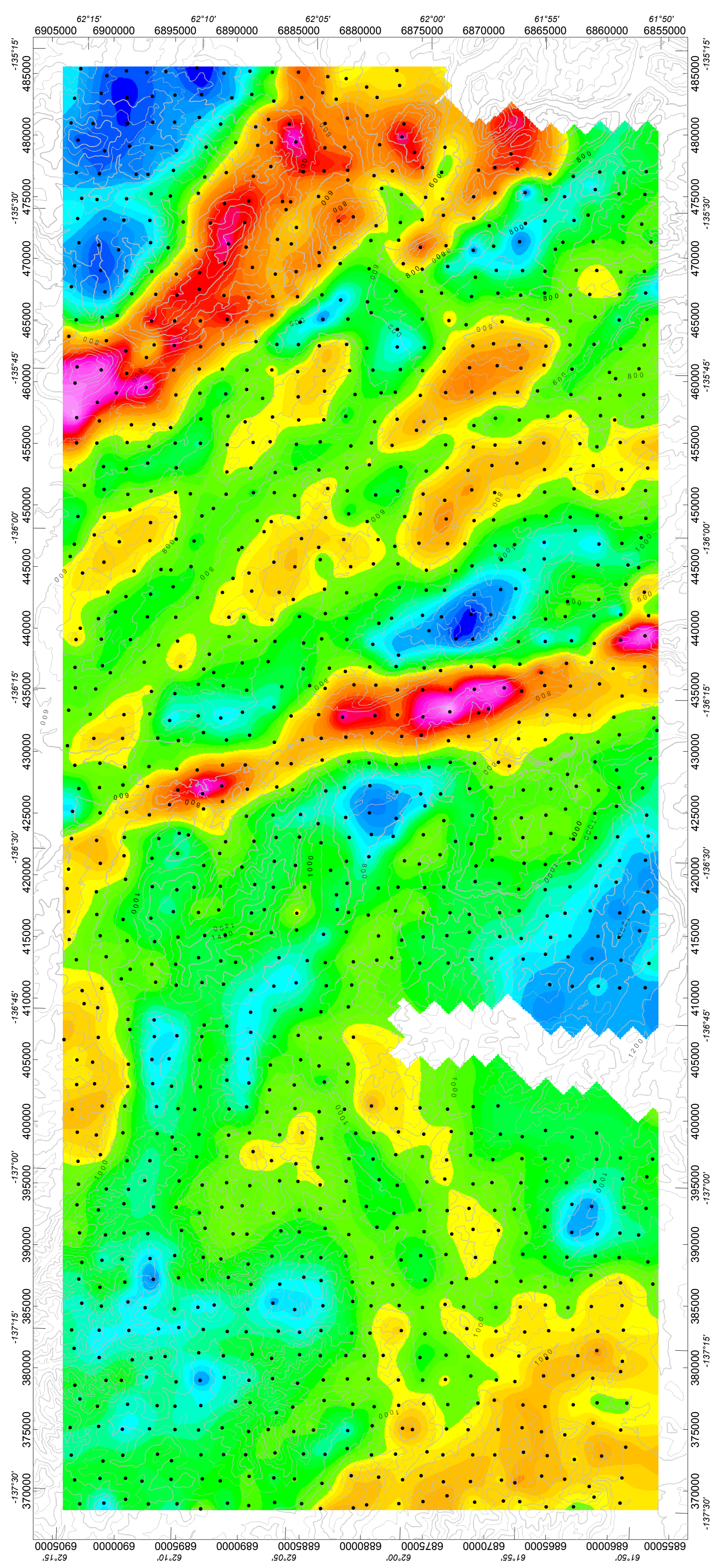
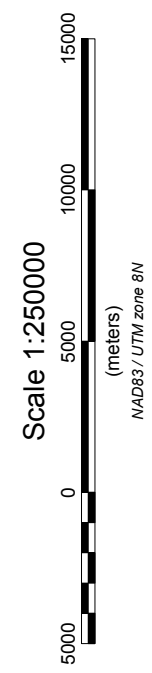
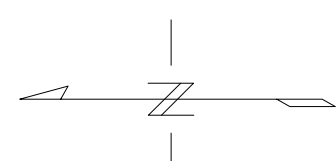
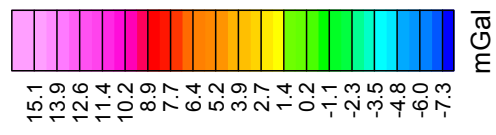


LEGEND

BOUGUER GRAVITY ANOMALY with Trend Removed

INSTRUMENT : Scintex Autograv CG-5
 GRID CELL SIZE : 100 m
 CORRECTED FOR : Drift, Bouguer, Bullard-B, Free-Air,
 Latitude and Topographic
 POST PROCESSING FILTERS : Upward Continuation Difference, 4000m
 DATA FILE : gravFinal2012.gdb
 OPERATORS : IK, GH, P.J, DH, JB
 TOTAL STATIONS SURVEYED : 1355

- Gravity Station
- ∧ Elevation Contour



Yukon Geological Survey

Carmacks
 BOUGUER GRAVITY ANOMALY WITH TREND REMOVED

YUKON TERRITORY, CANADA
 NTS : 105(E,F,H,I,K,L)
 DATE SURVEYED : March-April 2012
 MAP NAME : gravFinal2012_filter.map (15-May-2012IK)

AURORA GEOSCIENCES LTD.