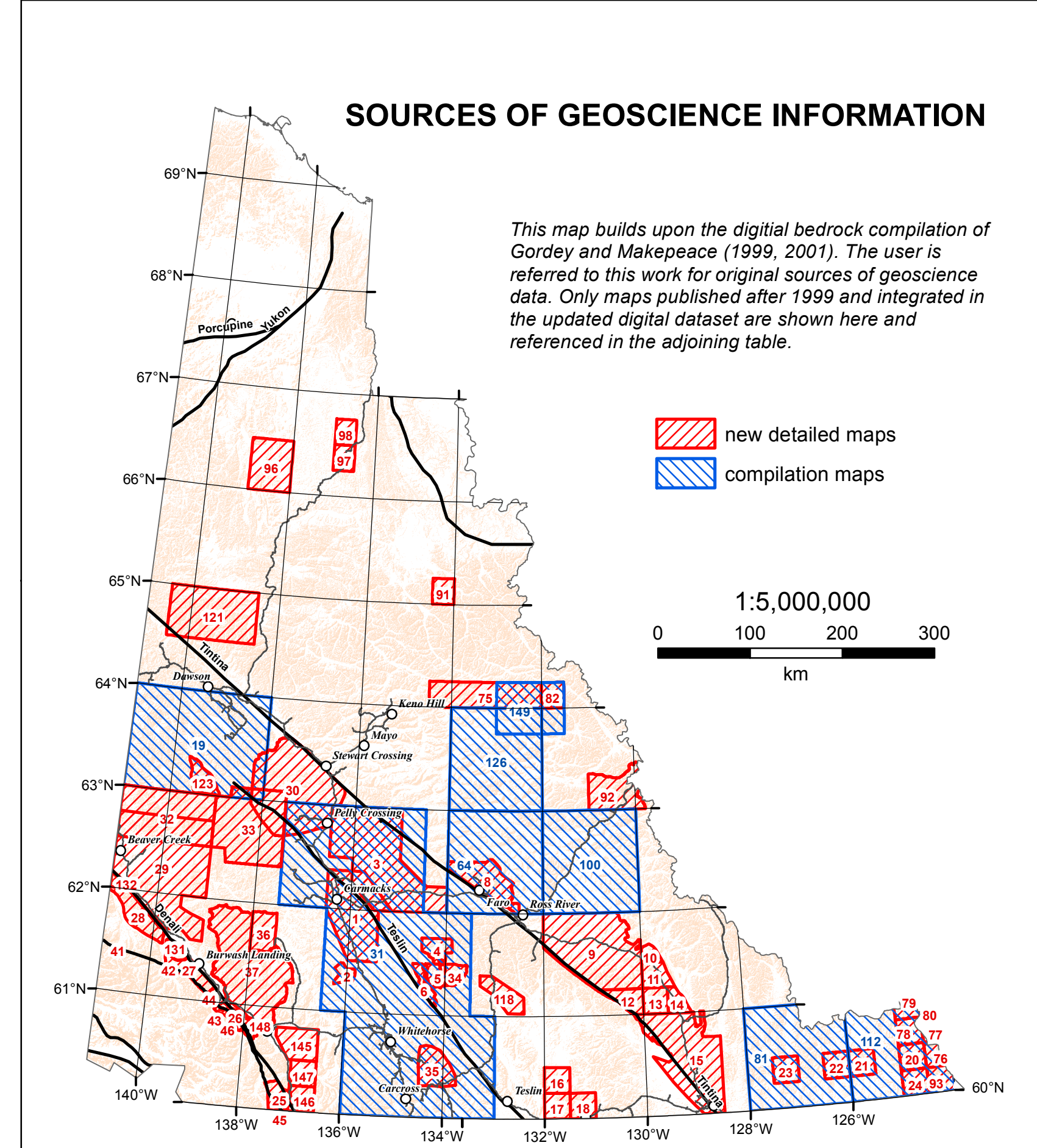
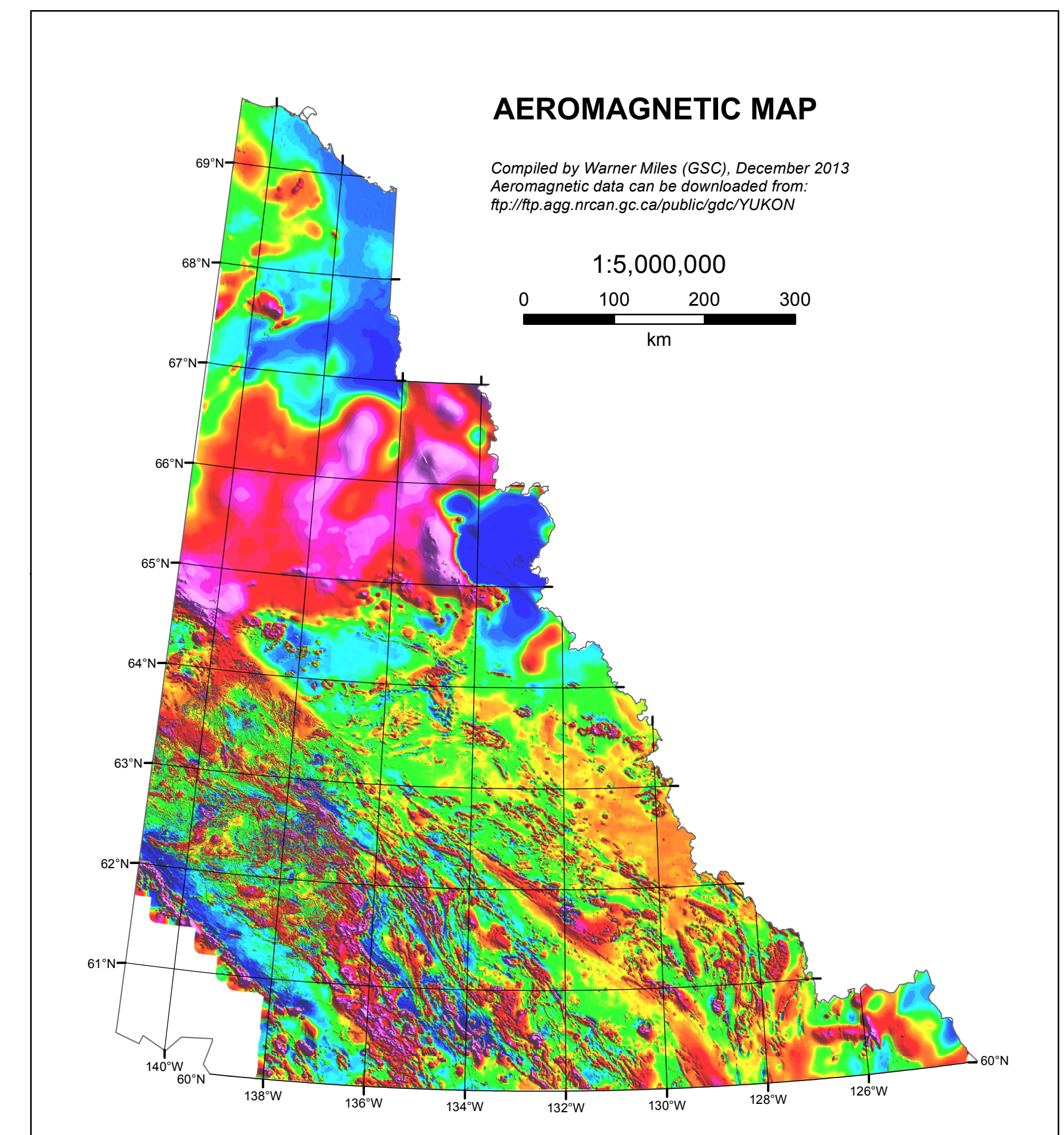
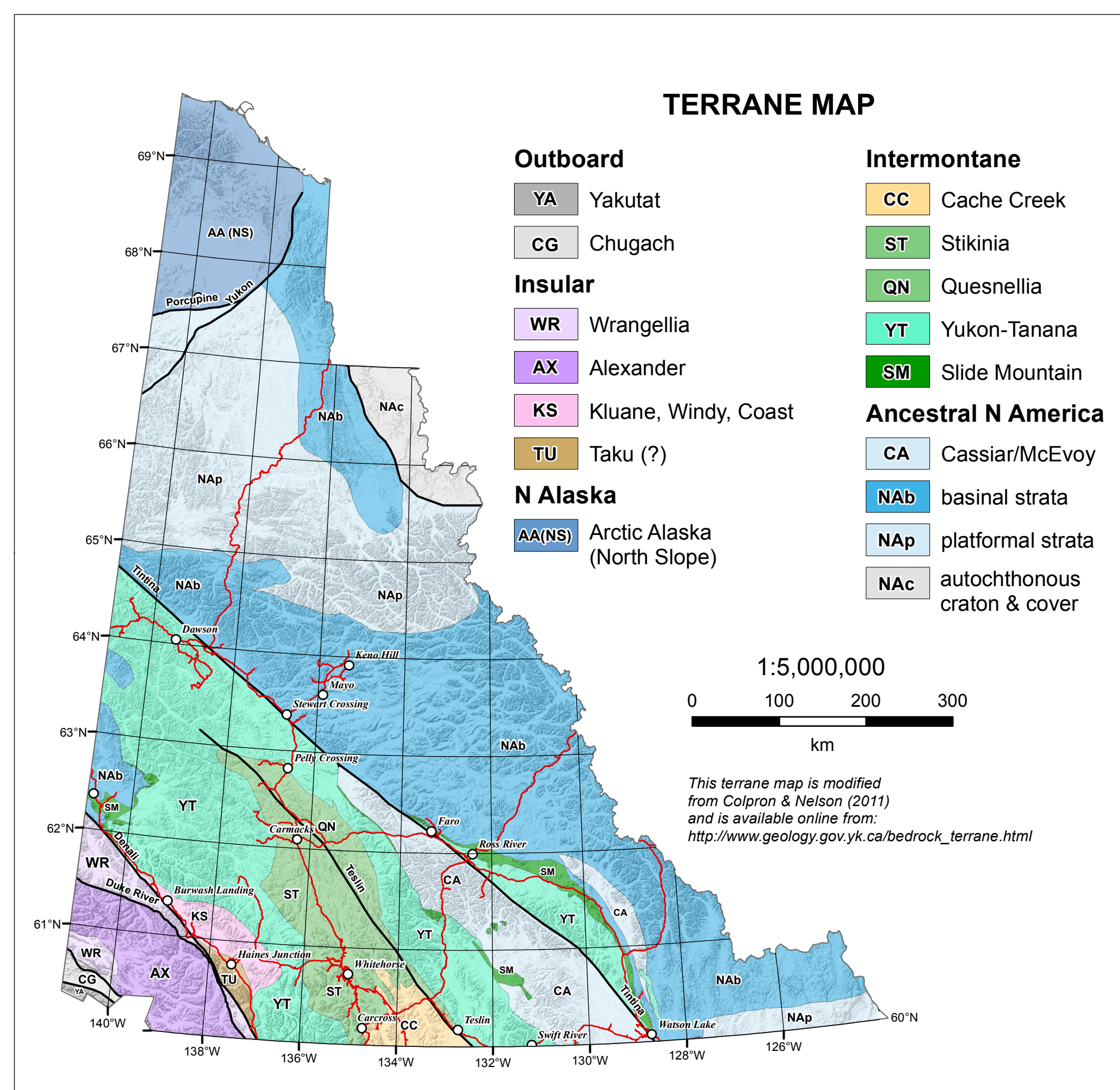


Albers Equal Area Conic Projection  
Standard Parallels 61°40'N and 68°N  
Central Meridian 132°30'W  
North American Datum 1983

1:1,000,000

0 50 100 km



Source	NFS Maps	Scale of publication	Map Name	Map type	Publication year
1	Colpron et al. (2007) - YGS CP 2007-8	1:625,000	1052.12, 1024.8, 1154.16	Northton (Athabasca trough)	bedrock mapping
2	Allen & Weiler (2001) - YGS CP 2001-3	1:250,000	1052.12, 1024.8, 1154.16	Devlen Mountain	bedrock mapping
3	Colpron et al. (2007) - YGS CP 2007-8	1:625,000	1052.12, 1024.8, 1154.16	Devlen Mountain	bedrock mapping
4	de Rooij (2001) - PhD. Univ. New Brunswick	1:50,000	1052.12, 1024.8, 1154.16	Tanana Creek	bedrock mapping
5	Colpron (2007) - YGS CP 2007-8	1:625,000	1052.12, 1024.8, 1154.16	Lawrence Creek	bedrock mapping
6	Imhoff (2001) - YGS CP 2001-12	1:50,000	1052.12, 1024.8, 1154.16	Boya of Mountain	bedrock mapping
7	Colpron (2007) - YGS CP 2007-8	1:625,000	1052.12, 1024.8, 1154.16	Boya of Mountain	bedrock mapping
8	Murphy et al. (2001) - YGS CP 2001-33	1:50,000	1052.12, 1024.8, 1154.16	Fraser Lake	bedrock mapping
9	Colpron (2007) - YGS CP 2007-8	1:625,000	1052.12, 1024.8, 1154.16	Fraser Lake	bedrock mapping
10	Murphy et al. (2001) - YGS CP 2001-33	1:50,000	1052.12, 1024.8, 1154.16	Manly Creek	bedrock mapping
11	Murphy et al. (2001) - YGS CP 2001-33	1:50,000	1052.12, 1024.8, 1154.16	Manly Creek	bedrock mapping
12	Murphy et al. (2001) - YGS CP 2001-33	1:50,000	1052.12, 1024.8, 1154.16	Manly Creek	bedrock mapping
13	Murphy et al. (2001) - YGS CP 2001-33	1:50,000	1052.12, 1024.8, 1154.16	Manly Creek	bedrock mapping
14	Murphy et al. (2001) - YGS CP 2001-33	1:50,000	1052.12, 1024.8, 1154.16	Manly Creek	bedrock mapping
15	Murphy et al. (2001) - YGS CP 2001-33	1:50,000	1052.12, 1024.8, 1154.16	Manly Creek	bedrock mapping
16	Murphy et al. (2001) - YGS CP 2001-33	1:50,000	1052.12, 1024.8, 1154.16	Manly Creek	bedrock mapping
17	Roots et al. (2004) - GSC OF 6030	1:50,000	1052.12, 1024.8, 1154.16	Manly Creek	bedrock mapping
18	Roots et al. (2004) - GSC OF 6030	1:50,000	1052.12, 1024.8, 1154.16	Manly Creek	bedrock mapping
19	Roots et al. (2004) - GSC OF 6030	1:50,000	1052.12, 1024.8, 1154.16	Manly Creek	bedrock mapping
20	Roots et al. (2004) - GSC OF 6030	1:50,000	1052.12, 1024.8, 1154.16	Manly Creek	bedrock mapping
21	Gordy & Makepeace (2001) - YGS CP 2001-33	1:50,000	1052.12, 1024.8, 1154.16	Manly Creek	bedrock mapping
22	Gordy & Makepeace (2001) - YGS CP 2001-33	1:50,000	1052.12, 1024.8, 1154.16	Manly Creek	bedrock mapping
23	Gordy & Makepeace (2001) - YGS CP 2001-33	1:50,000	1052.12, 1024.8, 1154.16	Manly Creek	bedrock mapping
24	Gordy & Makepeace (2001) - YGS CP 2001-33	1:50,000	1052.12, 1024.8, 1154.16	Manly Creek	bedrock mapping
25	Gordy & Makepeace (2001) - YGS CP 2001-33	1:50,000	1052.12, 1024.8, 1154.16	Manly Creek	bedrock mapping
26	Colpron (2007) - YGS CP 2007-8	1:625,000	1052.12, 1024.8, 1154.16	Manly Creek	bedrock mapping
27	Colpron (2007) - YGS CP 2007-8	1:625,000	1052.12, 1024.8, 1154.16	Manly Creek	bedrock mapping
28	Colpron (2007) - YGS CP 2007-8	1:625,000	1052.12, 1024.8, 1154.16	Manly Creek	bedrock mapping
29	Colpron (2007) - YGS CP 2007-8	1:625,000	1052.12, 1024.8, 1154.16	Manly Creek	bedrock mapping
30	Colpron (2007) - YGS CP 2007-8	1:625,000	1052.12, 1024.8, 1154.16	Manly Creek	bedrock mapping
31	Colpron (2011) - YGS CP 2011-1	1:625,000	1052.12, 1024.8, 1154.16	Manly Creek	bedrock mapping
32	Colpron (2011) - YGS CP 2011-1	1:625,000	1052.12, 1024.8, 1154.16	Manly Creek	bedrock mapping
33	Colpron (2011) - YGS CP 2011-1	1:625,000	1052.12, 1024.8, 1154.16	Manly Creek	bedrock mapping
34	Colpron (2011) - YGS CP 2011-1	1:625,000	1052.12, 1024.8, 1154.16	Manly Creek	bedrock mapping
35	Colpron (2011) - YGS CP 2011-1	1:625,000	1052.12, 1024.8, 1154.16	Manly Creek	bedrock mapping
36	Colpron (2011) - YGS CP 2011-1	1:625,000	1052.12, 1024.8, 1154.16	Manly Creek	bedrock mapping
37	Colpron (2011) - YGS CP 2011-1	1:625,000	1052.12, 1024.8, 1154.16	Manly Creek	bedrock mapping
38	Colpron (2011) - YGS CP 2011-1	1:625,000	1052.12, 1024.8, 1154.16	Manly Creek	bedrock mapping
39	Colpron (2011) - YGS CP 2011-1	1:625,000	1052.12, 1024.8, 1154.16	Manly Creek	bedrock mapping
40	Colpron (2011) - YGS CP 2011-1	1:625,000	1052.12, 1024.8, 1154.16	Manly Creek	bedrock mapping
41	Colpron (2011) - YGS CP 2011-1	1:625,000	1052.12, 1024.8, 1154.16	Manly Creek	bedrock mapping
42	Colpron (2011) - YGS CP 2011-1	1:625,000	1052.12, 1024.8, 1154.16	Manly Creek	bedrock mapping
43	Colpron (2011) - YGS CP 2011-1	1:625,000	1052.12, 1024.8, 1154.16	Manly Creek	bedrock mapping
44	Colpron (2011) - YGS CP 2011-1	1:625,000	1052.12, 1024.8, 1154.16	Manly Creek	bedrock mapping
45	Colpron (2011) - YGS CP 2011-1	1:625,000	1052.12, 1024.8, 1154.16	Manly Creek	bedrock mapping
46	Colpron (2011) - YGS CP 2011-1	1:625,000	1052.12, 1024.8, 1154.16	Manly Creek	bedrock mapping
47	Colpron (2011) - YGS CP 2011-1	1:625,000	1052.12, 1024.8, 1154.16	Manly Creek	bedrock mapping
48	Colpron (2011) - YGS CP 2011-1	1:625,000	1052.12, 1024.8, 1154.16	Manly Creek	bedrock mapping
49	Colpron (2011) - YGS CP 2011-1	1:625,000	1052.12, 1024.8, 1154.16	Manly Creek	bedrock mapping
50	Colpron (2011) - YGS CP 2011-1	1:625,000	1052.12, 1024.8, 1154.16	Manly Creek	bedrock mapping

**NTS INDEX**

117CD Chaparral Plateau	117AB Chaparral Plateau	116N Chaparral Plateau	116P Chaparral Plateau	106L Chaparral Plateau	106K Chaparral Plateau
116N Chaparral Plateau	116P Chaparral Plateau	106L Chaparral Plateau	106K Chaparral Plateau	106M Chaparral Plateau	106N Chaparral Plateau
116G Chaparral Plateau	116H Chaparral Plateau	106E Chaparral Plateau	106F Chaparral Plateau	106O Chaparral Plateau	106P Chaparral Plateau
116B Chaparral Plateau	116A Chaparral Plateau	106D Chaparral Plateau	106C Chaparral Plateau	106Q Chaparral Plateau	106R Chaparral Plateau
116N Chaparral Plateau	116P Chaparral Plateau	106L Chaparral Plateau	106K Chaparral Plateau	106M Chaparral Plateau	106N Chaparral Plateau
116J Chaparral Plateau	116I Chaparral Plateau	106J Chaparral Plateau	106I Chaparral Plateau	106J Chaparral Plateau	106I Chaparral Plateau
116G Chaparral Plateau	116H Chaparral Plateau	106E Chaparral Plateau	106F Chaparral Plateau	106O Chaparral Plateau	106P Chaparral Plateau
116B Chaparral Plateau	116A Chaparral Plateau	106D Chaparral Plateau	106C Chaparral Plateau	106Q Chaparral Plateau	106R Chaparral Plateau
116N Chaparral Plateau	116P Chaparral Plateau	106L Chaparral Plateau	106K Chaparral Plateau	106M Chaparral Plateau	106N Chaparral Plateau
116J Chaparral Plateau	116I Chaparral Plateau	106J Chaparral Plateau	106I Chaparral Plateau	106J Chaparral Plateau	106I Chaparral Plateau
116G Chaparral Plateau	116H Chaparral Plateau	106E Chaparral Plateau	106F Chaparral Plateau	106O Chaparral Plateau	106P Chaparral Plateau
116B Chaparral Plateau	116A Chaparral Plateau	106D Chaparral Plateau	106C Chaparral Plateau	106Q Chaparral Plateau	106R Chaparral Plateau

This update of the Yukon bedrock geology map builds upon the previous compilation by Gordy and Makepeace (1999, 2001). It includes new, detailed bedrock geology maps and regional compilations that have been published by the Yukon Geological Survey and the Geological Survey of Canada between 1999 and 2014, as well as some recent thesis works (see source map for references). A few of these maps were partially integrated into the digital dataset by Gordy and Makepeace (2003), but only as overlays to the 1999 compilation. A number of errors and omissions from the 1999 compilation of Gordy and Makepeace were also noted and corrected during compilation of this version of the map.

The GIS dataset behind this open file map is regularly updated and can be downloaded from the Yukon Geological Survey's website: [www.geology.gov.yk.ca/updates\\_yukon\\_bedrock\\_geology\\_map.html](http://www.geology.gov.yk.ca/updates_yukon_bedrock_geology_map.html). Users are advised to consult the website regularly to ensure they are working with the latest version of the geodatabase or shape files. This update of the GIS dataset includes an expanded attribute structure (compared to the 1999 dataset) that facilitates searching of the geodatabase. The data can also be viewed and queried online using the Yukon Geological Survey interactive map service: <http://mapserv.gov.yk.ca/YGS/SL/>.

The Yukon Geological Survey aims to provide users with the best available geoscience data for Yukon. Any revisions or additional geological information known to the user would be welcomed by the Yukon Geological Survey.

**ACKNOWLEDGEMENTS**

The process of updating the Yukon digital bedrock geology spanned almost a decade and involved many. First and foremost, this update was greatly facilitated by the solid foundation that Steve Gordy and Andrew Makepeace established with their original digital compilation. Discussions and data contributions by colleagues at the Geological Survey of Canada (in particular S. Gordy, J. Ryan, C. Roots, K. Farias, L. Lane, W. Miles and N. Hayward), the University of British Columbia (M. Allan, C. Hart and J. Mortenson), Simon Fraser University (D. Thorslund), Dartmouth University (J. Strauss), the University of Iowa (J. Glott, B. McClelland) and exploration geologists are greatly appreciated. S. Darling, K. Kennedy, B. Saffian, R. Cobbett, A. Scott, O. Bruce, and B. Elliot, amongst others, provided GIS assistance over the life of the project.

**REFERENCES CITED**

Colpron, M. and Nelson, J.L., 2011. A digital atlas of terranes for the northern Cordillera. Yukon Geological Survey, [www.geology.gov.yk.ca/bedrock\\_terrane.html](http://www.geology.gov.yk.ca/bedrock_terrane.html); also, BC Geological Survey, GeoFile 2011-11, Accessed: November 7, 2015.

Gordy, S.P. and Makepeace, A.J., 1999. Yukon Digital Geology. Geological Survey of Canada, Open File D3826; also: Yukon Geological Survey, Open File 1999-1(D).

Gordy, S.P. and Makepeace, A.J., 2001. Bedrock Geology, Yukon Territory. Geological Survey of Canada, Open File 3754; also: Yukon Geological Survey, Open File 2001-1, scale 1:1,000,000.

Gordy, S.P. and Makepeace, A.J., 2003. Yukon digital geology (version 2). Geological Survey of Canada, Open File 1745; also: Yukon Geological Survey, Open File 2003-8(D).

**RECOMMENDED CITATIONS**

For this map:  
Colpron, M., Israel, S., Murphy, D., Piggott, L. and Moynihan, D., 2016. Yukon Bedrock Geology Map. Yukon Geological Survey, Open File 2016-1, 1:1,000,000 scale map and legend.

For online geodatabase:  
Yukon Geological Survey. [year]. Yukon Digital Bedrock Geology. [http://www.geology.gov.yk.ca/updates\\_yukon\\_bedrock\\_geology\\_map.html](http://www.geology.gov.yk.ca/updates_yukon_bedrock_geology_map.html), accessed: [date of accession].

Yukon Geological Survey  
Energy, Mines and Resources  
Government of Yukon

Open File 2016-1

**Yukon Bedrock Geology Map**  
2016

Sheet 1 of 2  
1:1,000,000 scale map

compiled by  
Maurice Colpron, Steve Israel, Don Murphy,  
Lee Piggott and David Moynihan