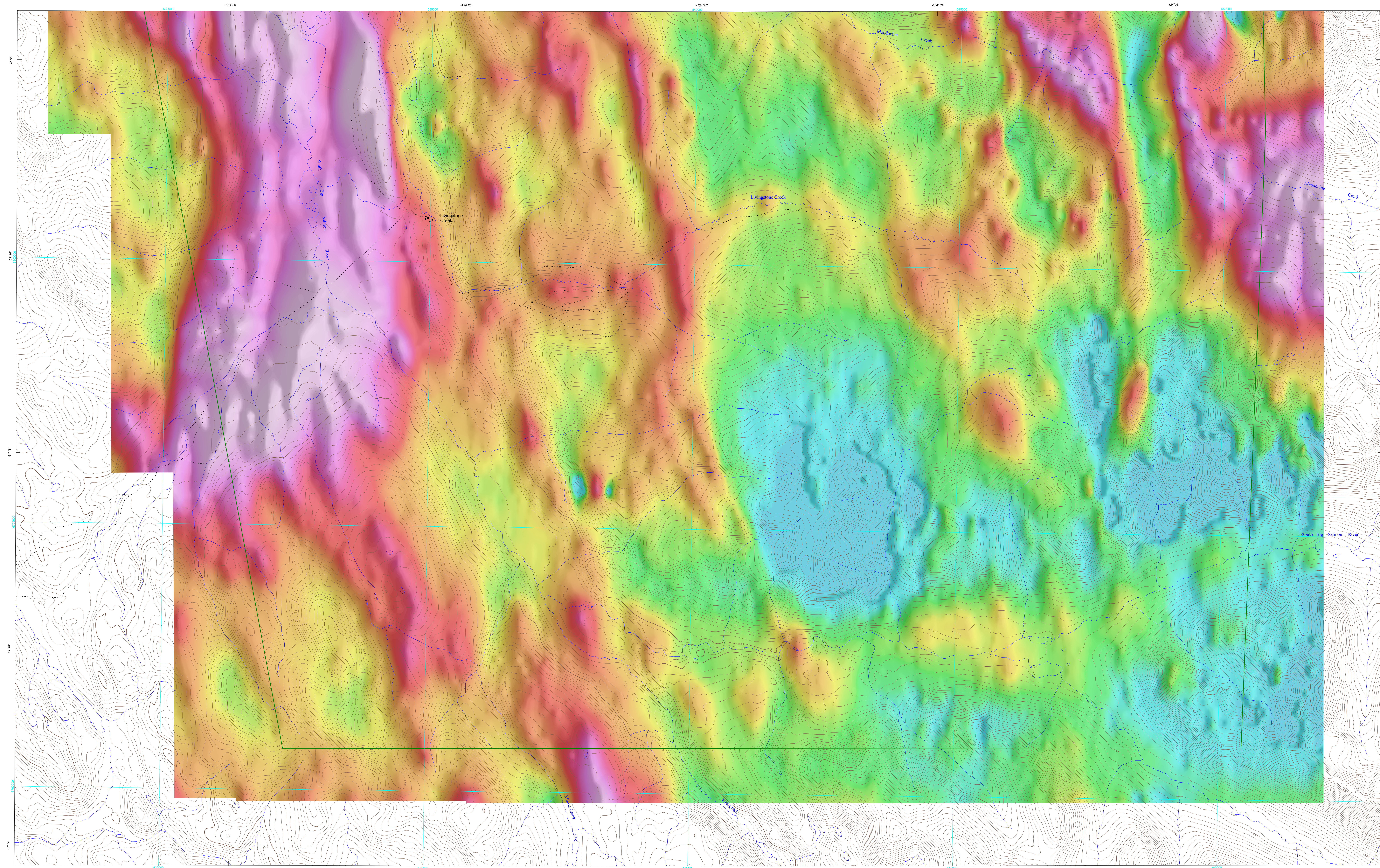


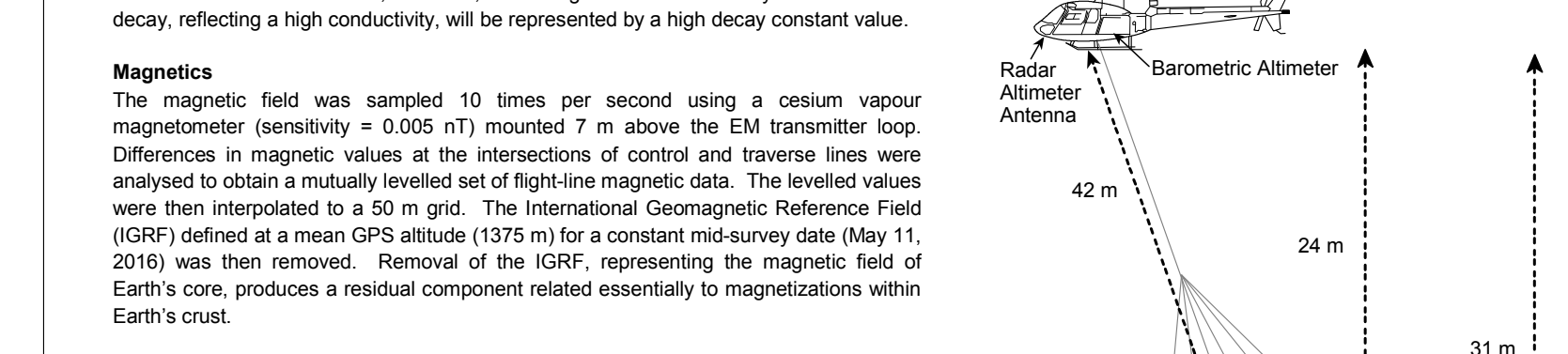
APPARENT CONDUCTIVITY - EARLY CHANNELS 4 - 14 (0.018 ms - 0.103 ms)



Technical Information table with 2 columns: Parameter and Value. Includes details on survey date, system, flight altitude, and receiver specifications.

Electromagnetic System Specifications table with 2 columns: Parameter and Value. Lists base frequency, transmitter/receiver area, and current.

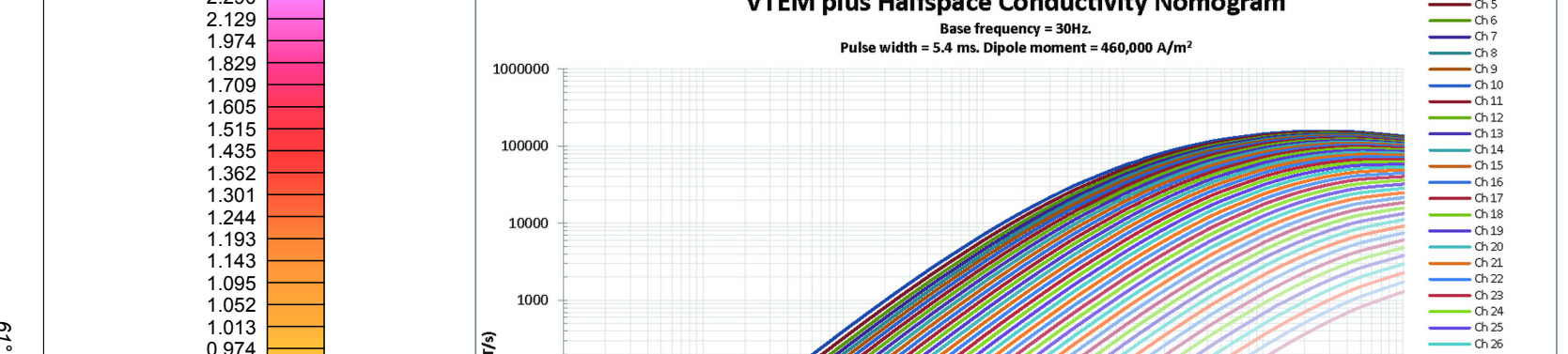
Apparent Conductivity table with 2 columns: Parameter and Value. Details the decay constant, receiver, and measurement response.



Electromagnetic Decay Constant: Details the decay constant (tau) values and the receiver used for the survey.

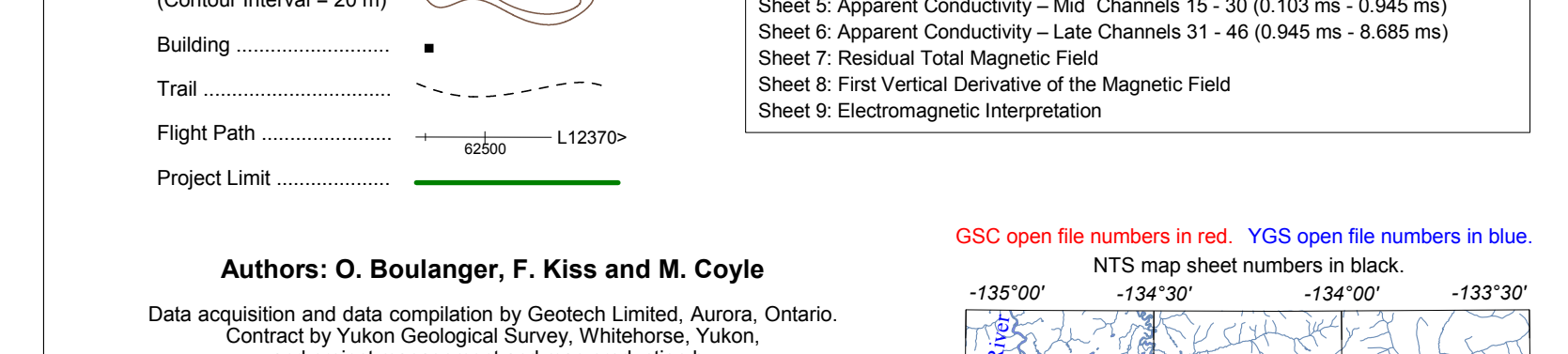
Magnetics: Describes the magnetic field measurements, including the use of a cesium vapour magnetometer and the resulting magnetic field data.

References: Lists scientific references related to the survey, including Hoad and 1985 and Meyer and 1988.



PLANIMETRIC SYMBOLS table with 2 columns: Symbol and Description. Lists symbols for drainage, topographic contours, buildings, trails, flight paths, and projected limits.

Authors: O. Boulanger, F. Kiss and M. Coyle. Acknowledgments: Thanks to Douglas Oleschak for cartographic design and to Warner Miles and Mark Pilkington for helpful comments.



Legend for map sheets: Lists sheet numbers and their corresponding time decay constants and channel ranges.

Scale 1:20 000. Map projection: Universal Transverse Mercator, zone 8. Includes copyright information for the Geological Survey of Canada.

OPEN FILE / DOSSIER PUBLIC 8084 / 2016-34. Includes information about the survey file and its availability.