

NOTES

Reprocessing of the magnetic data for Yukon was performed between November 2016 and March 2017. Aeromagnetic data (available through NRCan Geoscience Data Repository for Geophysical Data) were compiled, data of different resolutions were merged, and a series of images individually levelled for each map sheet were produced. For each 1:250 000-scale map, the following magnetic derivative maps were produced:

1. Residual Total Magnetic Field;
2. Reduced-to-Pole Magnetic Field (RTP);
3. First Vertical Derivative of the Reduced-to-Pole Magnetic Field (RTP_VD); and
4. Tilt Derivative of the Reduced-to-Pole Magnetic Field (RTP_TDR).

These maps are provided both as GeoTiff and Geosoft grid files. Colour ramps/legends are provided for each map.

The Yukon Geological Survey created georeferenced *.pdf maps of the shaded relief colour contour products for each 1:250 000 map sheet.

REFERENCES

Kiss, F. and Boulanger, O., 2016. Residual Total Magnetic Field, Aeromagnetic Survey of the Frances Lake Area, Yukon, NTS 105A/10 and parts of 105A/6, 7, 9, 11. Yukon Geological Survey Open File 2016-17; also Geological Survey of Canada, Open File 8063.

Miles, W., Saltus, R., Hayward, N. and Oneschuk, D., 2015. Alaska and Yukon Magnetic Compilation, Residual total magnetic field. Geological Survey of Canada, Open File 7862.

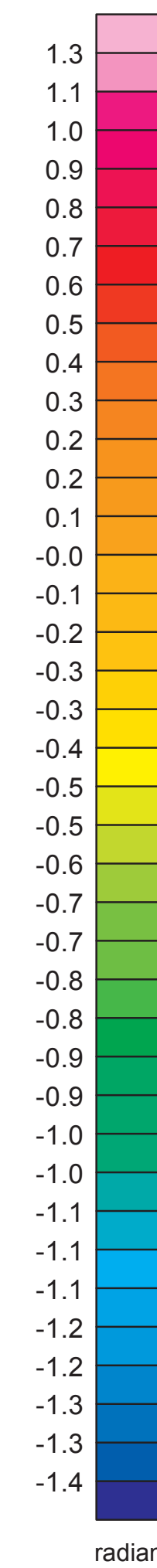
RECOMMENDED CITATION

Aurora Geosciences Ltd. and Bruce, J.O., 2017. Tilt derivative of the reduced-to-pole magnetic field, shaded colour contour map (NTS 105G). In: Reprocessing of Yukon magnetic data for NTS 105G. Yukon Geological Survey, Open File 2017-15, scale 1:250 000, sheet 4 of 4.

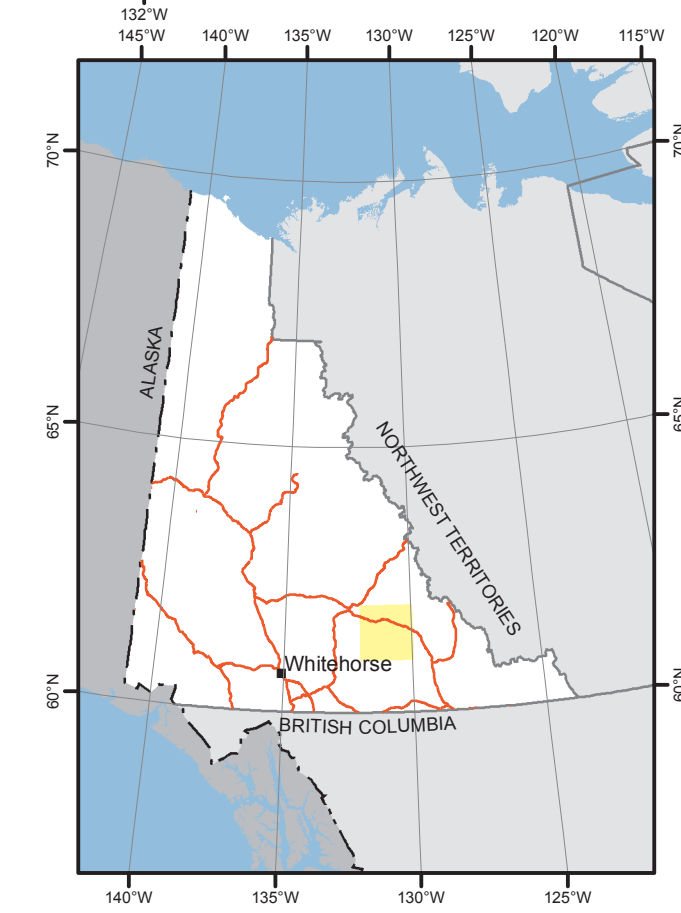
Any revisions or additional geological information known to the user would be welcomed by the Yukon Geological Survey.

Paper copies of this map and the accompanying report may be obtained from the Yukon Geological Survey, Energy, Mines and Resources, Government of Yukon, Room 102-300 Main St., Whitehorse, Yukon, Y1A 2B5. Ph. 867-667-3201, Email geology@gov.yk.ca.

A digital PDF (Portable Document File) file of this map, and available data, can be downloaded free of charge from the Yukon Geological Survey website: <http://www.geology.gov.yk.ca>.

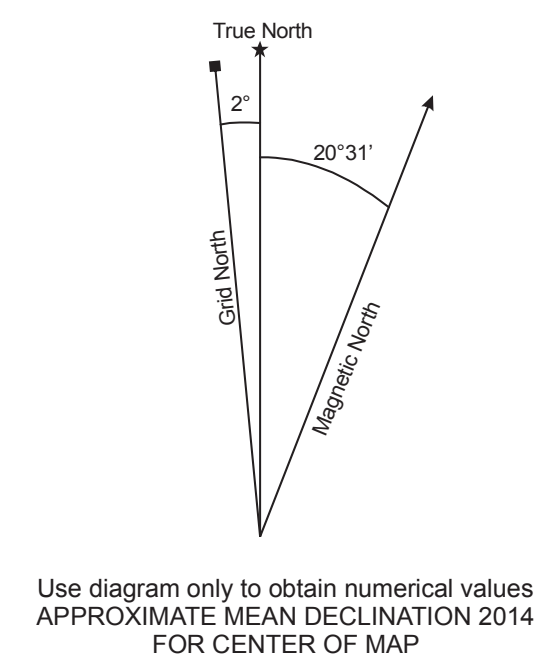
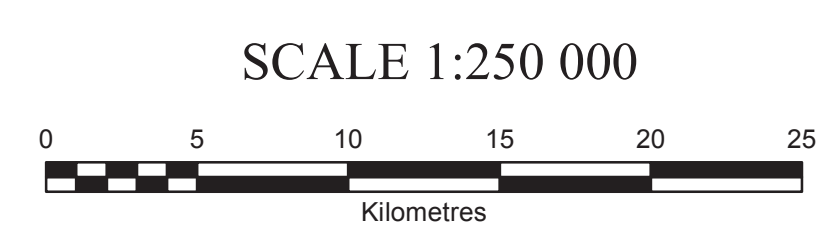


- community
- road
- ~ drainage
- watercourse
- waterbody



1:250 000-scale topographic base data produced by CENTRE FOR TOPOGRAPHIC INFORMATION, NATURAL RESOURCES CANADA
ONE THOUSAND METRE GRID Universal Transverse Mercator Projection North American Datum 1983 Zone 9

TILT DERIVATIVE OF THE REDUCED-TO-POLE MAGNETIC FIELD FINLAYSON LAKE (NTS 105G) YUKON



105K TAY RIVER	105J SHELDON LAKE	105I LITTLE NAHANNI RIVER
105F QUIET LAKE	THIS MAP	105H FRANCES LAKE
105C TESLIN	105B WOLF LAKE	105A WATSON LAKE

Yukon Geological Survey
Energy, Mines and Resources
Government of Yukon
Open File 2017-15
Sheet 4 of 4
Tilt Derivative of the Reduced-to-Pole Magnetic Field Shaded Colour Contour Map (NTS 105G)
(1:250 000 scale)
by
Aurora Geosciences Ltd.
and
J.O. Bruce