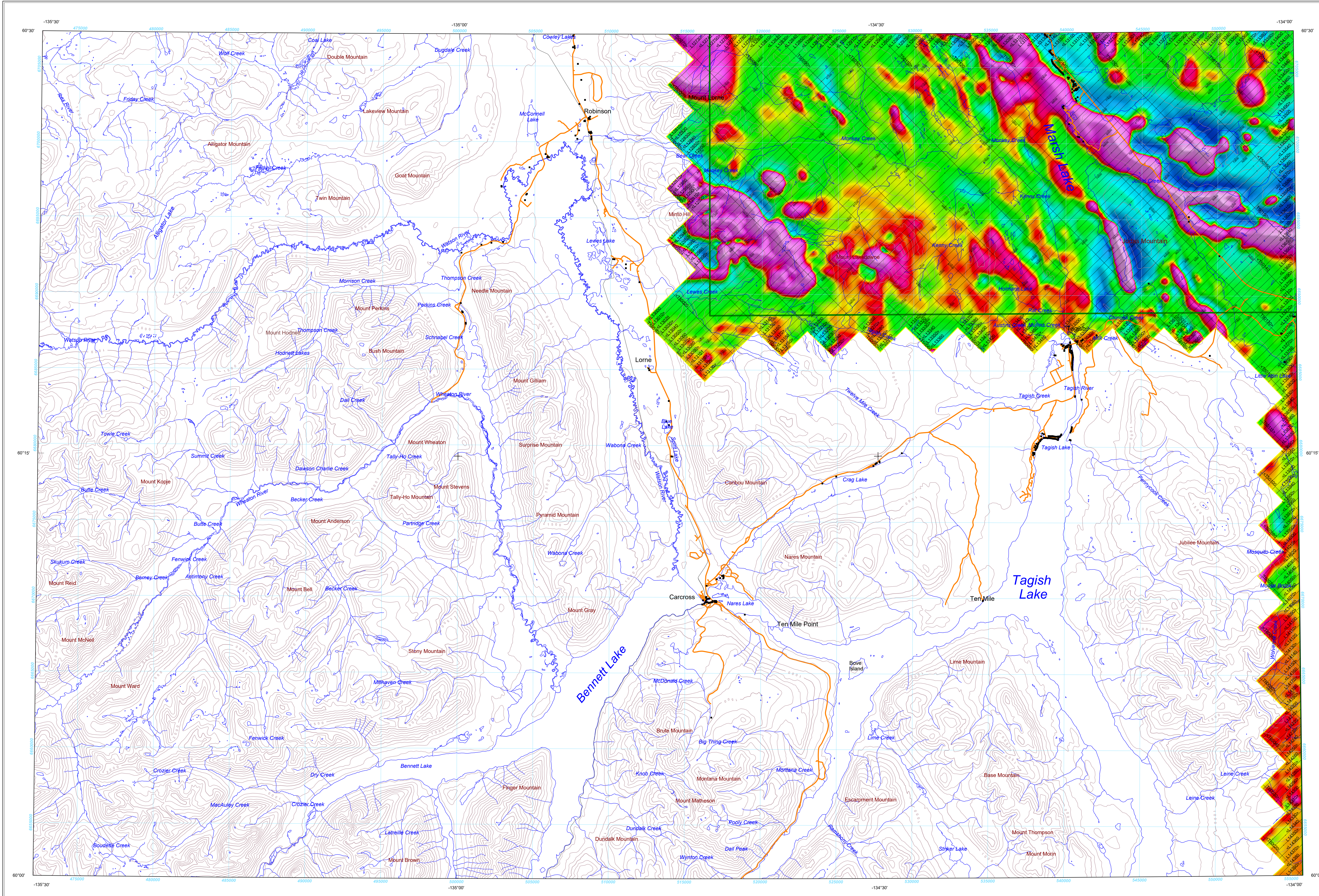


FIRST VERTICAL DERIVATIVE OF THE MAGNETIC FIELD



First Vertical Derivative of the Magnetic Field

This map of the first vertical derivative of the magnetic field was derived from data acquired during an aeromagnetic survey carried out by Geo Data Solutions GDS Inc. from January 12, 2018 to March 16, 2018. The data were recorded using split-beam cesium vapour magnetometers (sensitivity = 0.005 nT) mounted in each of the tail booms of a Beechcraft King Air aircraft (C-441R) and a Piper Navajo (C-440P). The nominal traverse and control line spacings were, respectively, 400 m and 2400 m, and the aircraft flew at a nominal terrain clearance of 150 m. Traverse lines were oriented N45°E with orthogonal control lines. The flight path was recovered following post-flight differential corrections to the raw Global Positioning System (GPS) data and inspection of ground images recorded by a vertically-mounted video camera. The survey was flown on a pre-determined flight surface to minimize differences in magnetic values at the intersections of control and traverse lines. These differences were computer-analysed to obtain a mutually levelled set of flight-line magnetic data. The levelled values were then interpolated to a 100 m grid. The International Geomagnetic Reference Field (IGRF) defined at the average GPS altitude of 1600 m for the year 2018.12 was then removed. Removal of the IGRF, representing the magnetic field of the Earth's core, produces a residual component related almost entirely to magnetizations within the Earth's crust.

The first vertical derivative of the magnetic field is the rate of change of the magnetic field in the vertical direction. Computation of the first vertical derivative removes long-wavelength features of the magnetic field and significantly improves the resolution of closely spaced and superposed anomalies. A property of first vertical derivative maps is the coincidence of the zero-value contour with vertical contacts at high magnetic latitudes (Hood, 1965).

This publication is available for free download through GEOSCAN (<http://geoscan.nrcan.gc.ca/>). Corresponding digital profile and gridded data as well as similar data for adjacent airborne geophysical surveys are available from Natural Resources Canada's Geoscience Data Repository for Aeromagnetic data at http://gdr.geoscan.nrcan.gc.ca/index_e.html. The same products are also available, for a fee, from the Geophysical Data Centre, Geological Survey of Canada, 601 Booth Street, Ottawa, Ontario K1A 0E8. Telephone: 613-995-5326, email: info@geoscan.nrcan.gc.ca.

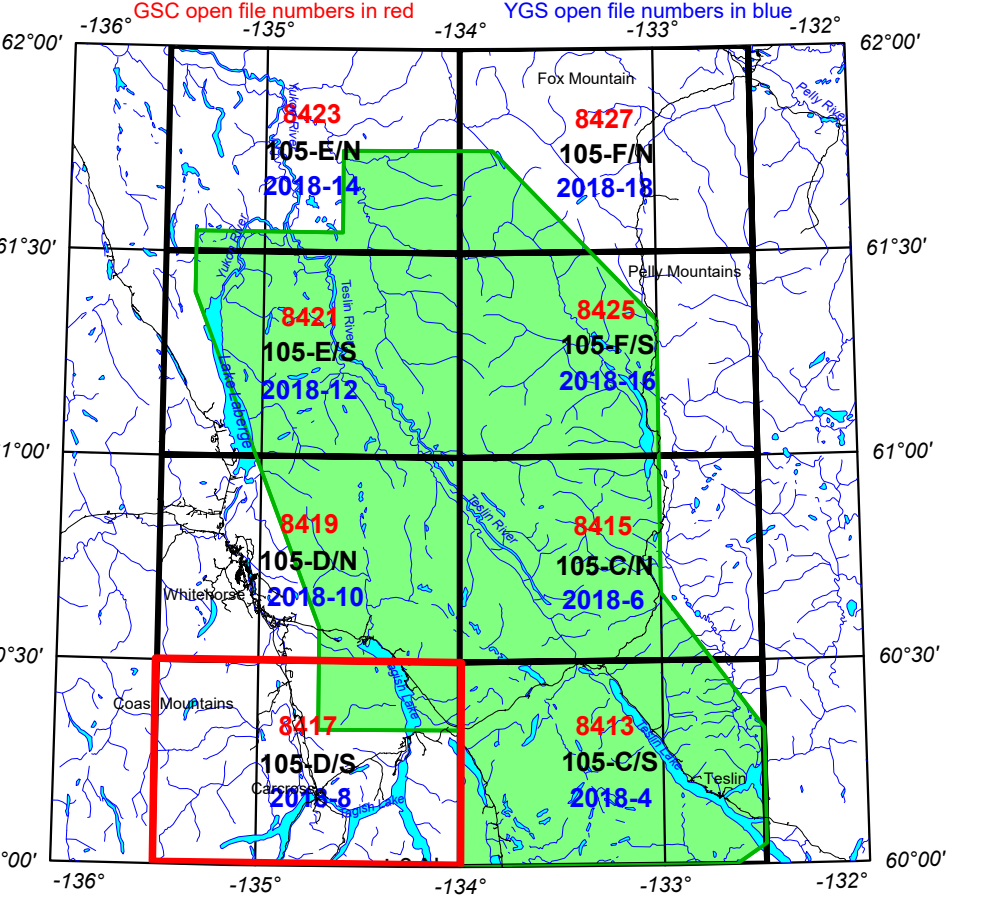
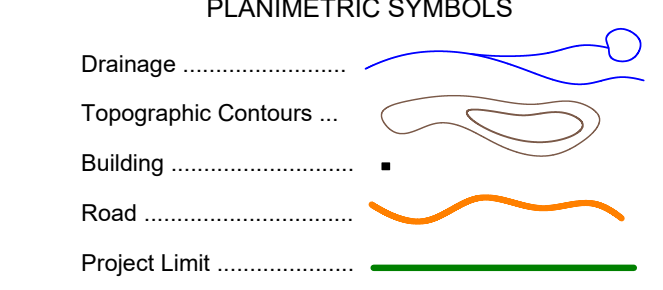
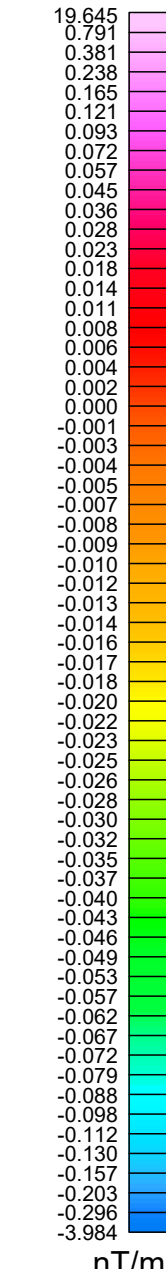
Copies of this map and accompanying data may also be obtained from the Yukon Geological Survey, Energy, Mines and Resources, Government of Yukon, P.O. Box 2703 (K-102), Whitehorse, Yukon, Y1A 2C6. Telephone: 867-667-3201, email: geology@gov.yk.ca, website: <http://www.geology.gov.yk.ca>.

References

Hood, P.J., 1965. Gradient measurements in aeromagnetic surveying. *Geophysics*, v. 30, p. 891-902.

Acknowledgements

The authors thank the field crew chief, Saleh Elmoussoufi (Geo Data Solutions GDS Inc.), for his cooperation and his technical assistance during the start-up phase of this survey contract.



AEROMAGNETIC SURVEY OF THE MARSH LAKE AREA

This aeromagnetic survey and the production of this map were funded by phase 2 of the Geo-mapping for Energy and Minerals program (GEM-2) of the Lands and Minerals Sector, Natural Resources Canada.

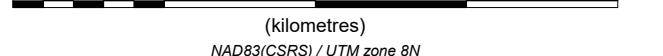
GEOLOGICAL SURVEY OF CANADA OPEN FILE 8417
YUKON GEOLOGICAL SURVEY OPEN FILE 2018-8

FIRST VERTICAL DERIVATIVE OF THE MAGNETIC FIELD

AEROMAGNETIC SURVEY OF THE MARSH LAKE AREA
YUKON

Part of NTS 105-D/South

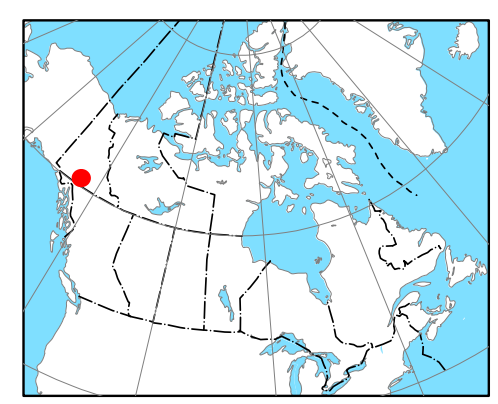
Scale 1:100 000



Authors: F. Kiss and O. Boulanger

Data acquisition, data compilation and map production by Geo Data Solutions GDS Inc., Laval, Québec. Contract and project management by the Geological Survey of Canada, Ottawa, Ontario. Cartographic design by I. D'Amours.

Permanent link: <https://doi.org/10.4095/308228>



OPEN FILE DOSSIER PUBLIC
8417
GEOLOGICAL SURVEY OF CANADA
COMMISSION GÉOLOGIQUE DU CANADA
2018

Publications in this series have not been edited; they are released as submitted by the author.
Les publications de cette série ne sont pas révisées; elles sont publiées telles que soumises par l'auteur.

OPEN FILE DOSSIER PUBLIC
2018-8
YUKON GEOLOGICAL SURVEY
COMMISSION GÉOLOGIQUE DU YUKON
2018

Recommended citation

Kiss, F. and Boulanger, O., 2018. First Vertical Derivative of the Magnetic Field, Aeromagnetic Survey of the Marsh Lake Area, Yukon, Part of NTS 105-D/South; Geological Survey of Canada, Open File 8417, Yukon Geological Survey Open File 2018-8, Scale 1:100 000. <https://doi.org/10.4095/308228>