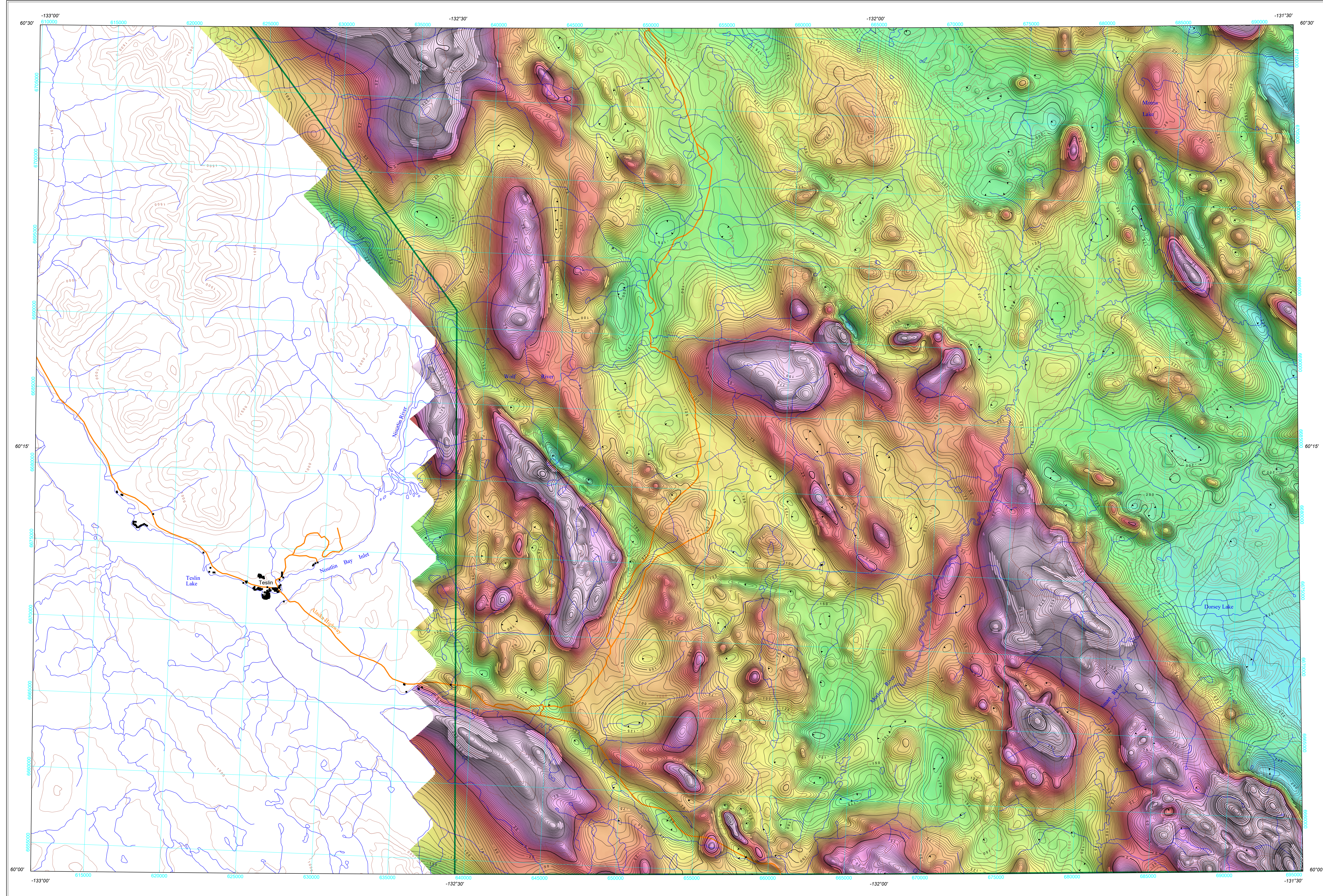


RESIDUAL TOTAL MAGNETIC FIELD



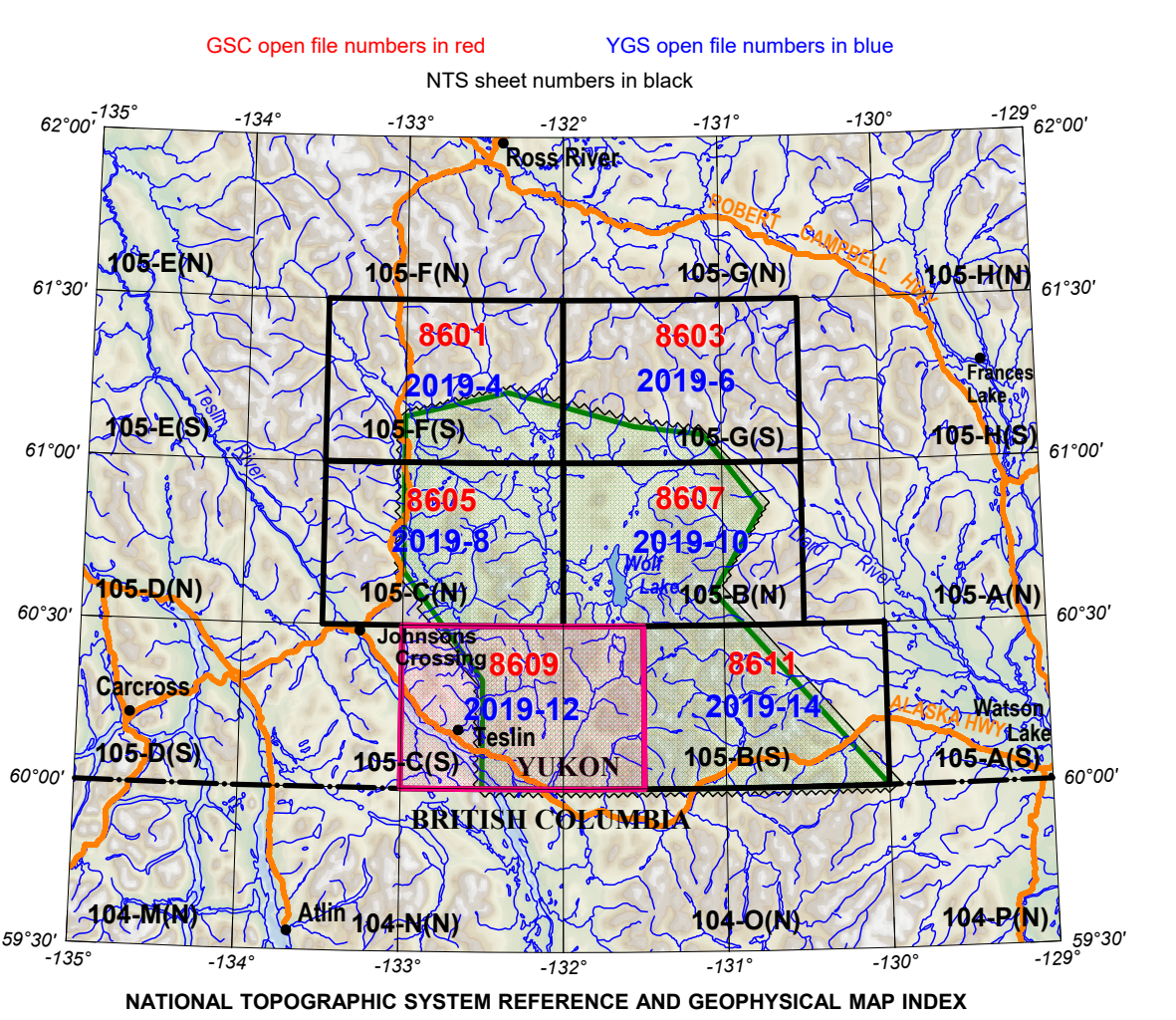
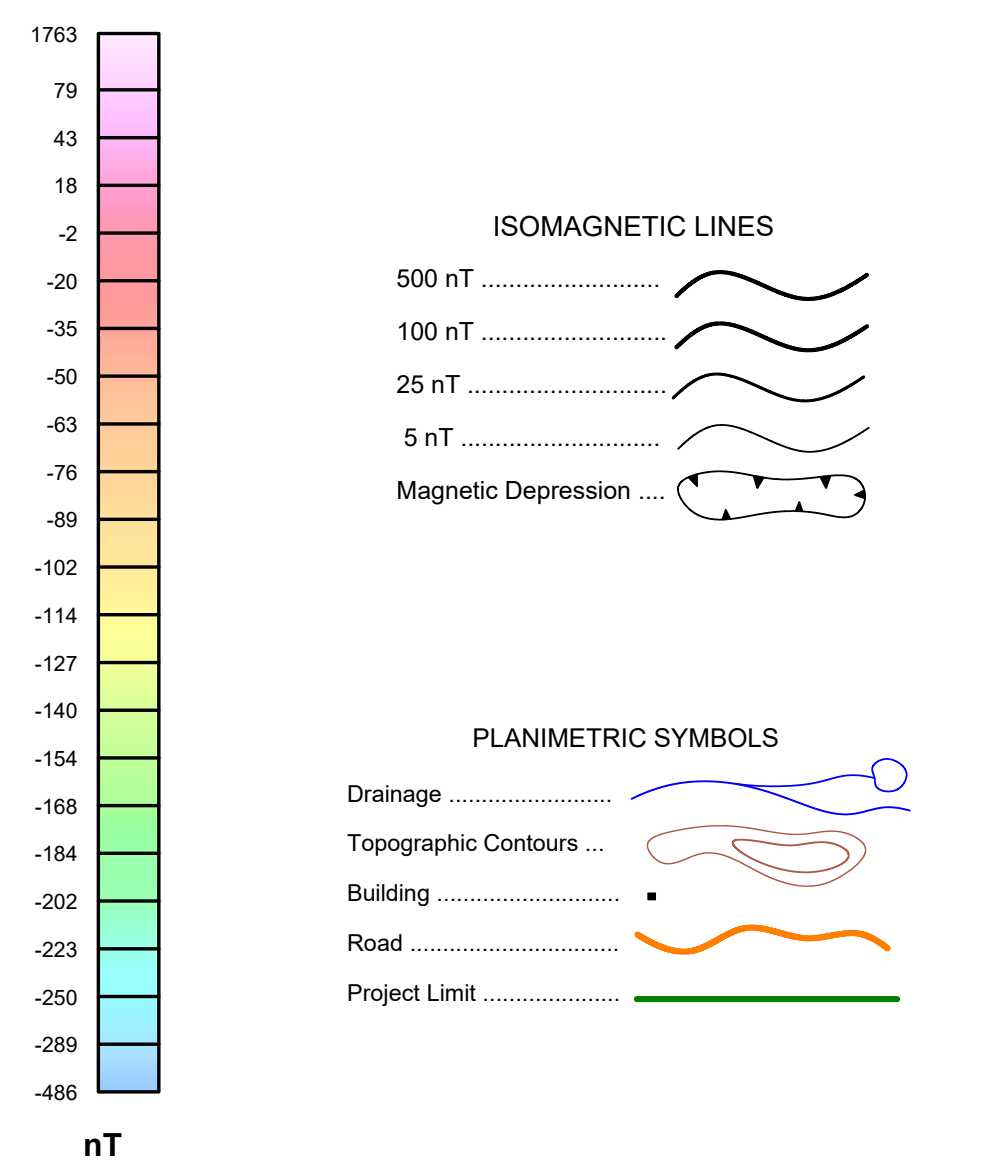
**Residual Total Magnetic Field**  
 This map of the residual total magnetic field was derived from data acquired during an aeromagnetic survey carried out by Novatam Inc. from February 23, 2019 to April 2, 2019. The data were recorded using split-beam cesium vapour magnetometers (sensitivity = 0.025 nT) mounted in each of the tail booms of two Piper Navajo aircraft (C-FVNG and C-GJDD). The nominal traverse and control line spacings were, respectively, 400 m and 2400 m, and the aircraft flew at a nominal terrain clearance of 150 m. Traverse lines were oriented N45°E with orthogonal control lines. The flight path was recovered following post-flight differential corrections to the raw Global Positioning System (GPS) data and inspection of ground images recorded by a vertically-mounted video camera. The survey was flown on a pre-determined flight surface to minimize differences in magnetic values at the intersections of control and traverse lines. These differences were computer-analysed to obtain a mutually levelled set of flight-line magnetic data. The levelled values were then interpolated to a 100 m grid. The International Geomagnetic Reference Field (IGRF) defined at the average GPS altitude of 1053 m for the year 2019.2 was then removed. Removal of the IGRF, representing the magnetic field of the Earth's core, produces a residual component related almost entirely to magnetizations within the Earth's crust.

This publication is available for free download through GEOSCAN (<http://geoscan.nrcan.gc.ca/>). Corresponding digital profile and gridded data as well as similar data for adjacent airborne geophysical surveys are available from Natural Resources Canada's Geoscience Data Repository for Aeromagnetic Data at <http://sdr.geoscan.nrcan.gc.ca/index.html>. The same products are also available, for a fee, from the Geophysical Data Centre, Geological Survey of Canada, 601 Booth Street, Ottawa, Ontario K1A 0E8. Telephone: (613) 995-5326, email: [info@gsdgc.nrcan.gc.ca](mailto:info@gsdgc.nrcan.gc.ca)

Copies of this map may also be obtained from the Yukon Geological Survey, Energy, Mines and Resources, Government of Yukon, P.O. Box 2703 (K-102), Whitehorse, Yukon, Y1A 2C6. Telephone: (867) 667-3201, email: [geology@gyv.yk.ca](mailto:geology@gyv.yk.ca), website: <http://www.geology.gyv.yk.ca>

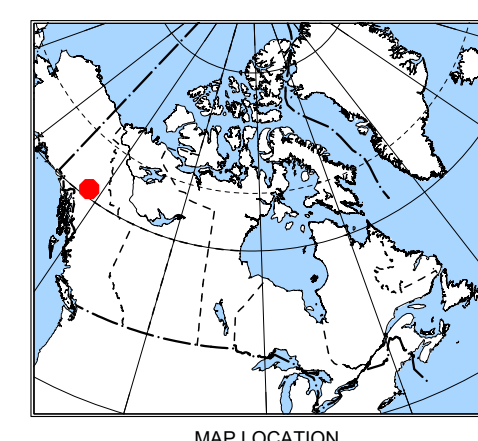
**Acknowledgements**

The author thanks the field crew chief, Ewan Pat Corfa, and Olivier Saignet (Novatam Inc.) for their cooperation and technical assistance during the start-up phase and preliminary data processing. We also thank Douglas Oneschuk (GSC) for his cartographic design expertise. Helpful comments and suggestions to improve the maps by Michael Thomas (GSC) are greatly appreciated.



**AEROMAGNETIC SURVEY OF THE WOLF LAKE AREA**

<p><b>OPEN FILE DOSSIER PUBLIC</b></p> <p><b>8609</b></p> <p>2019</p>	<p>Publications in this series have not been edited; they are released as submitted by the author.</p> <p>Les publications de cette série ne sont pas révisées; elles sont publiées telles que soumises par l'auteur.</p>	<p><b>OPEN FILE DOSSIER PUBLIC</b></p> <p><b>2019-12</b></p> <p>2019</p>
---	---	--



**Recommended citation**  
 Kiss, F., 2019. Residual Total Magnetic Field; Aeromagnetic Survey of the Wolf Lake Area, Yukon. Parts of NTS 105-B (south half) and 105-C (south half); Geological Survey of Canada, Open File 8609; Yukon Geological Survey Open File 2019-12. Scale 1:100 000. <https://doi.org/10.4095/314837>

This aeromagnetic survey and the production of this map were funded by phase 2 of the Geo-mapping for Energy and Minerals program (GEM-2) of the Lands and Minerals Sector, Natural Resources Canada.

**Author: F. Kiss**

Data acquisition and data compilation by Novatam Inc., Mont-Saint-Hilaire, Quebec  
 Contract and project management by the Geological Survey of Canada, Ottawa, Ontario  
 Cartographic design by D. Oneschuk, Geological Survey of Canada  
 Permanent link: <https://doi.org/10.4095/314837>

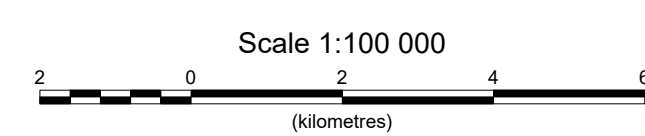
GEOLOGICAL SURVEY OF CANADA OPEN FILE 8609  
 YUKON GEOLOGICAL SURVEY OPEN FILE 2019-12

**RESIDUAL TOTAL MAGNETIC FIELD**

**AEROMAGNETIC SURVEY OF THE WOLF LAKE AREA**

YUKON

Parts of NTS 105-B (south half) and 105-C (south half)



Universal Transverse Mercator Projection Zone 8 North  
 North American Datum 1983  
 © Her Majesty the Queen in Right of Canada, as represented by the Minister of Natural Resources, 2019  
 Base map of the scale of 1:250 000 from Natural Resources Canada, as represented by the Minister of Natural Resources, 2019  
 Base map of the scale of 1:250 000 from Natural Resources Canada, as represented by the Minister of Natural Resources, 2019  
 Éditions à l'échelle de 1:250 000 de la carte de base