

NOTES

Standardization of publicly available digital magnetic data from assessment reports was performed in 2019 and 2020. Residual magnetic field was calculated through removal of the IGRF. A levelled magnetic field channel was calculated by sampling the 1:250 000 compilation grid and taking the mean difference between the residual magnetic field and the overlapping points; this mean difference is applied as zero order datum shift to the residual data. This is repeated for each 1:250 000 compilation that the survey overlaps.

Up to four gridded products are produced for each survey (Residual Total Magnetic Field (TMI), Reduced-to-Pole Magnetic Field (RTP), First Vertical Derivative of the Reduced-to-Pole Magnetic Field (RTP_VD) and Tilt Derivative of the Reduced-to-Pole Magnetic Field (RTP_TDR) and these have pre-existing analogous 1:250 000 products from Open Files 2017-5 to 2017-59.

The outline of the assessment report data is extracted and eroded by a buffer, typically 200 m. The buffer is automatically reduced if it exceeds half the range of either the x or y coordinates. The eroded buffer is then windowed from each the four corresponding 1:250 000 compilations.

Each assessment report grid is then blended with the compilation grid through averaging common points between the grids. By previously windowing out the eroded assessment report outline from the compilation, both fidelity to the higher quality assessment report data and a smooth transition to avoid edge artifacts are achieved. This is an appropriate approach when the assessment report data are of higher quality than the compilation. Mostly this is true due to the higher resolution of data that is typical of a property-scale survey compared to a government regional-scale survey. However this is not universally the case and for every assessment report each of the four new blended grids are compared with the unaltered compilation. Assessment report grids which upon blending lower the quality of the compilation are manually rejected. A log file of accepted and rejected assessment reports for each 1:250 000 sheet is maintained.

The Yukon Geological Survey created georeferenced *.pdf maps of the shaded relief colour contour products for each 1:250 000 map sheet. The map data are provided as GeoTiff files.

Funding for this project was provided by the Canadian Northern Economic Development Agency through their Strategic Investments in Northern Economic Development program.

REFERENCES

Miles, W., Saltus, R., Hayward, N. and Oneschuk, D., 2015. Alaska and Yukon Magnetic Compilation, Residual total magnetic field. Geological Survey of Canada, Open File 7862.

Hulstein, Roger, 2007. 2007 Geophysical, Geological and Geochemical Report on the TONI 9-28 Claims. Yukon Energy, Mines and Resources Assessment Report 94857.

Valdez Gold Inc., 2010. Geophysical Report on the Line 1-60 and Line 61-100 Claims. Yukon Energy, Mines and Resources Assessment Report 95536.

Solomon Resources Ltd., 2011. Airborne Geophysical Survey Report, Ten Mile Creek, Gold Project, Block A and Block B. Yukon Energy, Mines and Resources Assessment Report 95564.

Ethos Gold Corp., 2011. Prospecting, Soil Geochemistry, Airborne Magnetic and Radiometric Surveying, and Airphoto-Orthophoto Surveying on the Wolf Project. Yukon Energy, Mines and Resources Assessment Report 96157.

Radius Gold Inc., 2010. Sixty Mile Property-2010 Geological, Geochemical, Geophysical and Auger, RAB and Diamond Drilling. Yukon Energy, Mines and Resources Assessment Report 96208.

Rackla Metals Inc. and Krefl, Bernard, 2011. 2011 Geophysical and Geochemical Survey Report, Ten Mile Project. Yukon Energy, Mines and Resources Assessment Report 96247.

Rackla Metals Inc., 2011. 2011 Geophysical and Geochemical Survey Report, Ten Mile Project. Yukon Energy, Mines and Resources Assessment Report 96248.

Spurlock, Joel, 2012. Geophysical Report on the Twenty Mile Creek Project. Yukon Energy, Mines and Resources Assessment Report 96393.

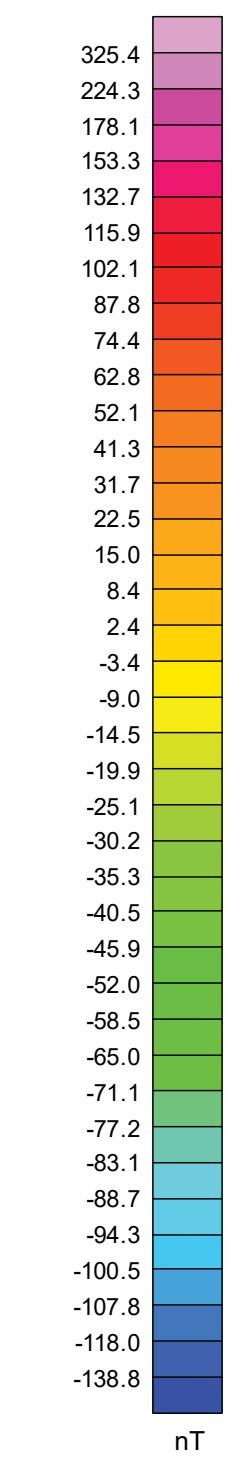
RECOMMENDED CITATION

Aurora Geosciences Ltd. and Bruce, J.O., 2020. Reduced-to-Pole Magnetic Field Shaded Colour Contour Map (NTS 115N). In: Reprocessing of Yukon magnetic data for NTS 115N. Yukon Geological Survey, Open File 2020-36, scale 1:250 000, 4 sheets.

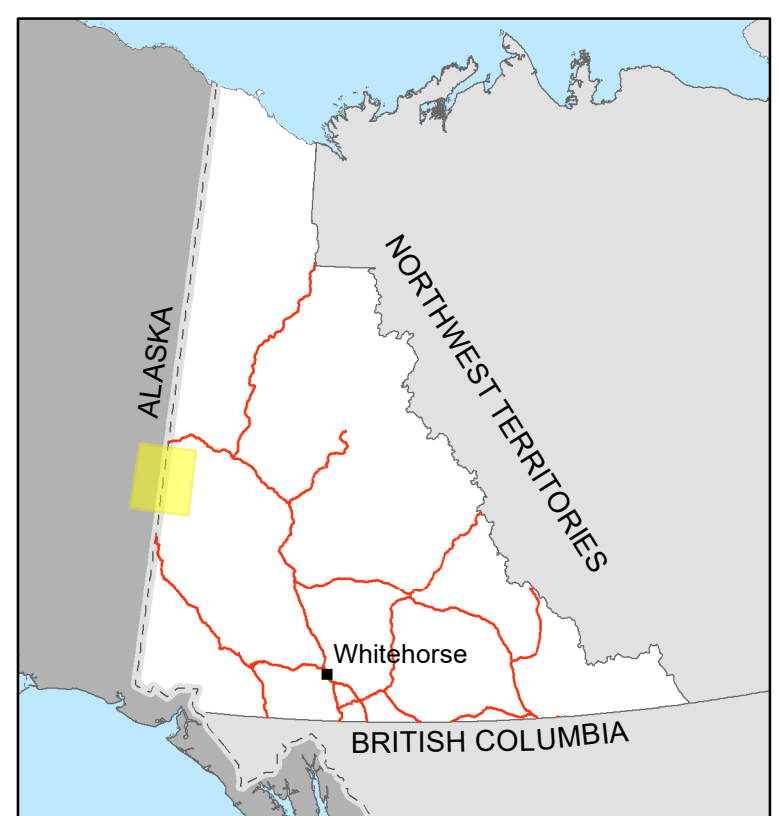
Any revisions or additional geological information known to the user would be welcomed by the Yukon Geological Survey.

Paper copies of this map and the accompanying report may be obtained from the Yukon Geological Survey, Energy, Mines and Resources, Government of Yukon, Room 102-300 Main St., Whitehorse, Yukon, Y1A 2B5. Email: geology@gov.yk.ca.

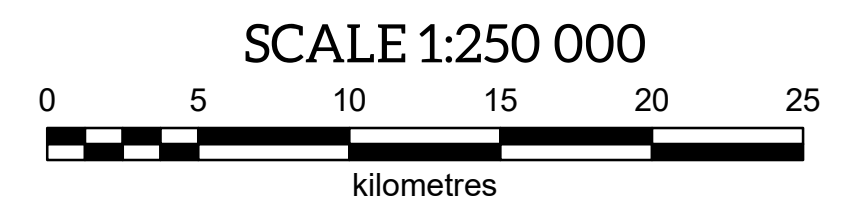
A digital PDF (Portable Document File) file of this map, and available data, can be downloaded free of charge from the Yukon Geological Survey website: <https://yukon.ca/en/science-and-natural-resources/geology>.



- watercourse
- waterbody
- Canada-US border
- Northwest Territories border

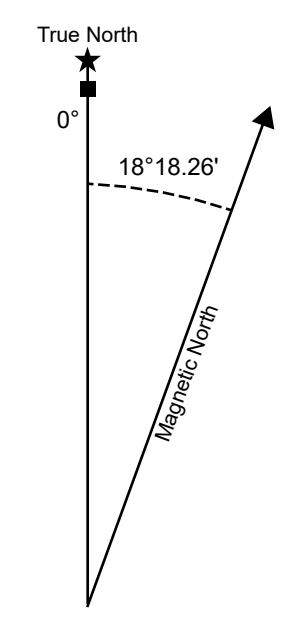


**REDUCED-TO-POLE MAGNETIC FIELD
PART OF STEWART RIVER (NTS 115N)
YUKON**



1:250 000-scale topographic base data produced by CENTRE FOR TOPOGRAPHIC INFORMATION, NATURAL RESOURCES CANADA

ONE THOUSAND METRE GRID
Universal Transverse Mercator Projection
North American Datum 1983
Zone 7



Use diagram only to obtain numerical values
APPROXIMATE MEAN DECLINATION 2020
FOR CENTRE OF MAP
Annual change 23.9' West

ALASKA	116C PART OF 116B	116B DAWSON
ALASKA	THIS MAP	115O STEWART RIVER
ALASKA	115K PART OF 115J	115J STEVENS ON RIDGE

Yukon Geological Survey
Energy, Mines and Resources
Government of Yukon

Open File 2020-36
Sheet 2 of 4

**Reduced-to-Pole Magnetic Field
Shaded Colour Contour Map (NTS 115N)
(1:250 000 scale)**

by
Aurora Geosciences Ltd.
and
J.O. Bruce